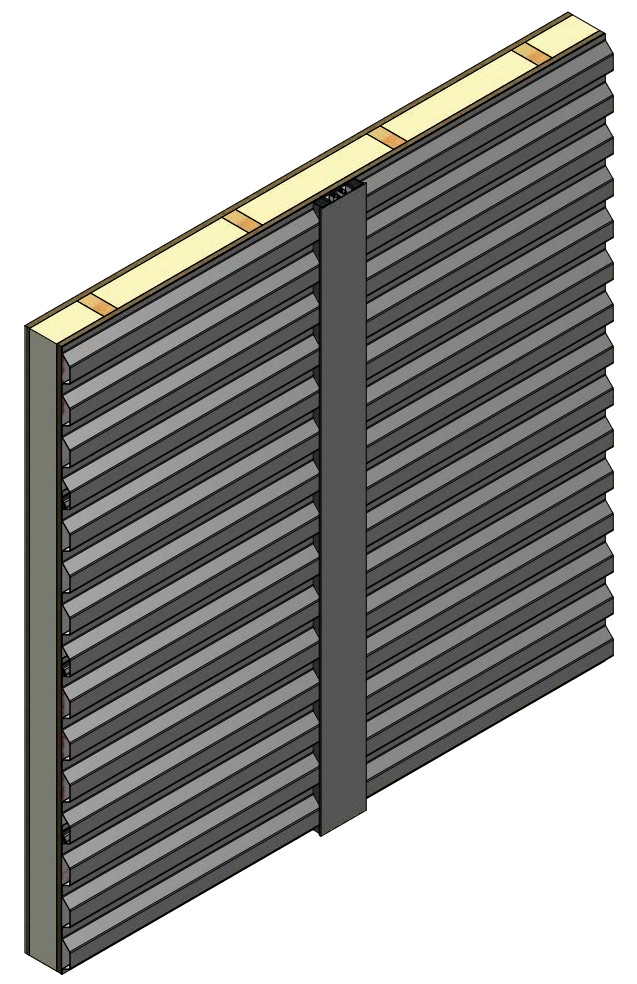
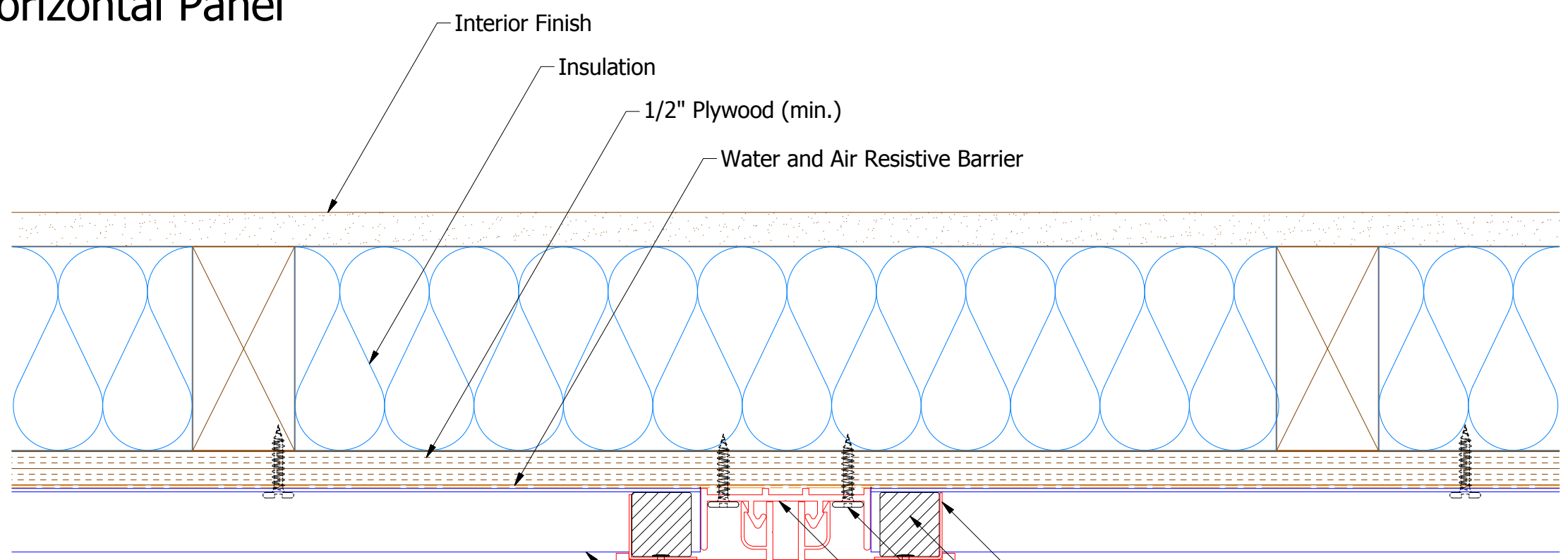
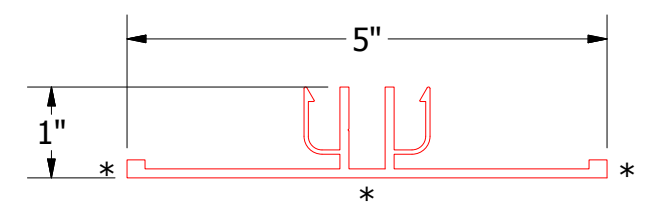
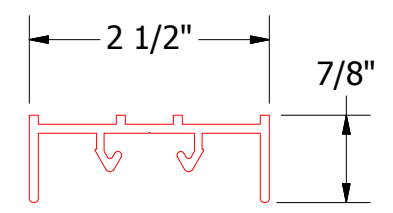
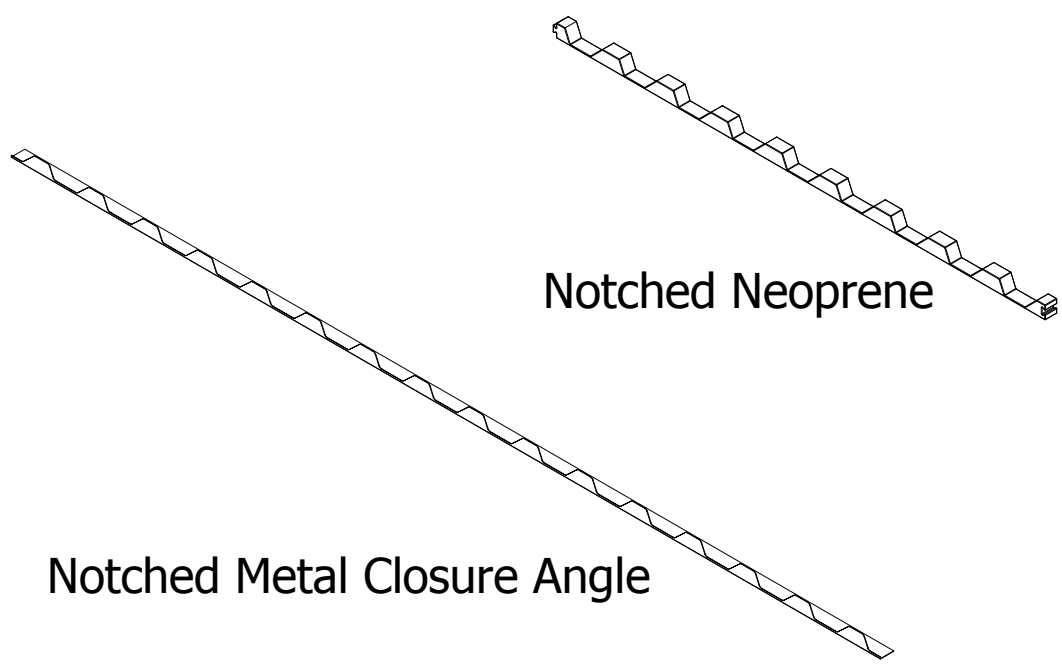


Horizontal Panel



- Closure Angle
- Notched Neoprene
- #10 x 1" Wafer Head Fastener
- Receiver Extrusion for Flush Transition Cover
- Flush Transition Cover Extrusion
- Painted Pop Rivet (Stainless Steel)
- Rigid Wall II Panel



Note: * denotes color side.

MAY902 - Receiver Extrusion for Flush Transition Cover

MAY102 - Flush Transition Cover Extrusion

REV. NO.	DATE	DESCRIPTION OF REVISION	BY	APP

ATAS INTERNATIONAL, INC
 Allentown PA
 610-395-8445
 Mesa AZ
 480-558-7210

TITLE Rigid Wall II Extruded Flush Detail			
DWG. NO.	DR	DATE	2/7/2019
	DMR		
MATERIAL	APP	DATE	
	SH. SIZE	B	SCALE X:X