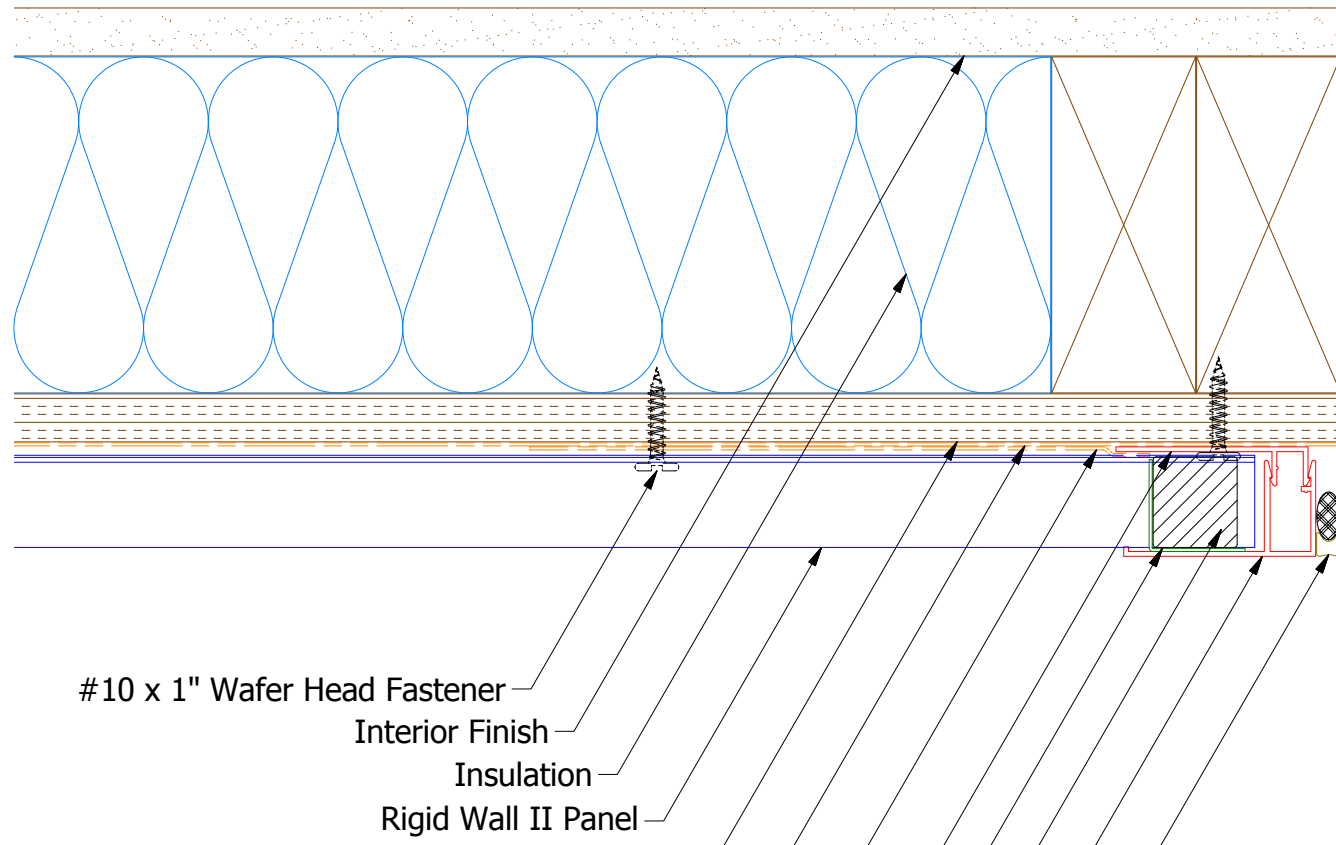
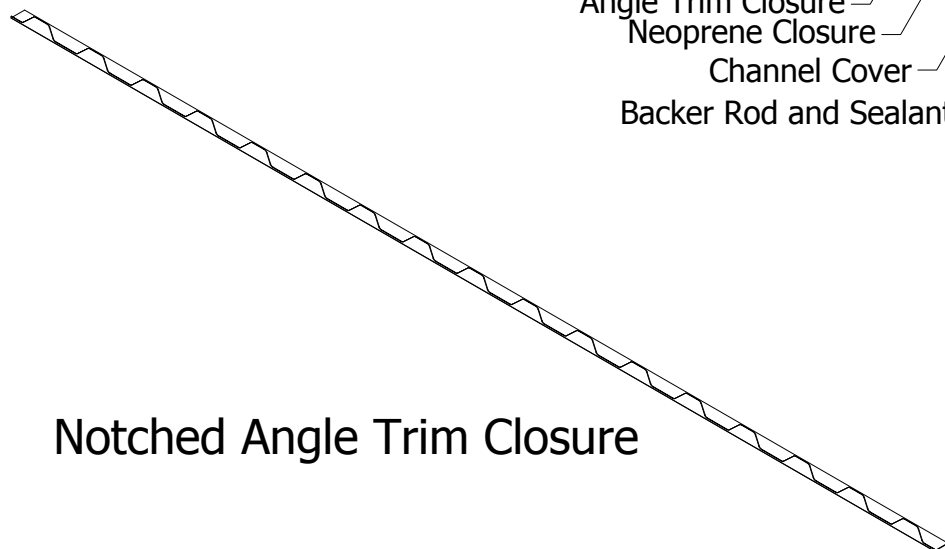


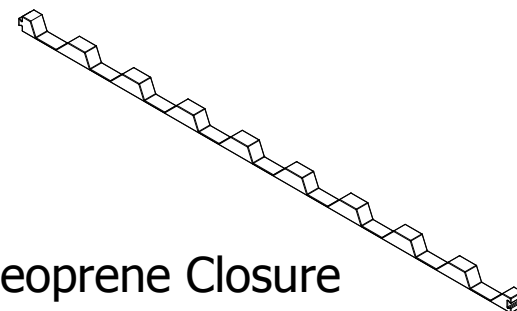
Horizontal Panel



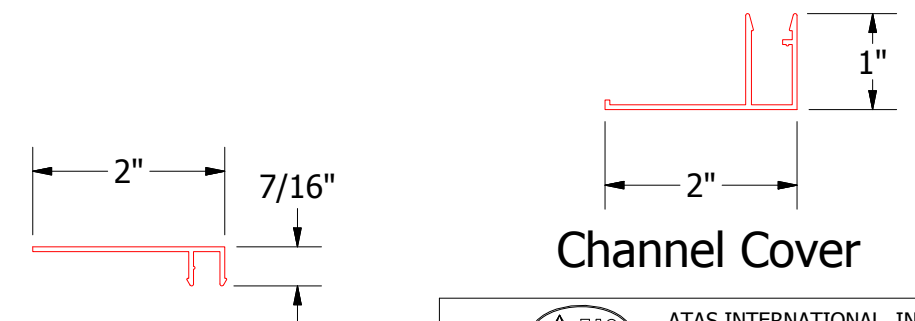
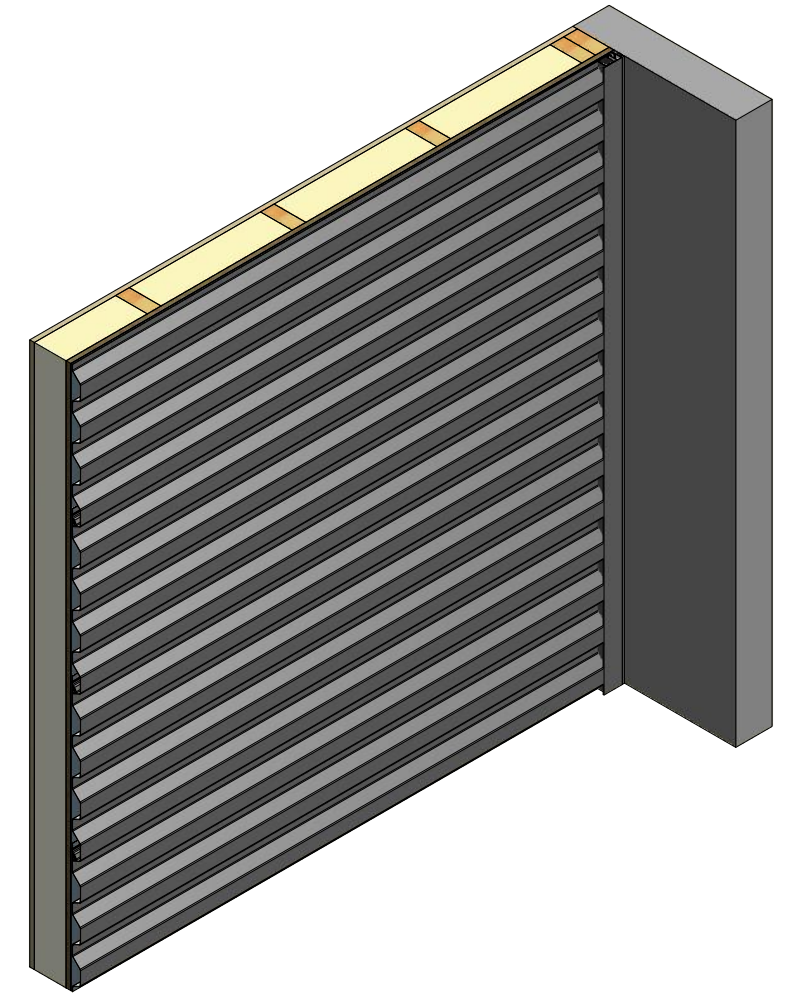
- #10 x 1" Wafer Head Fastener
- Interior Finish
- Insulation
- Rigid Wall II Panel
- 1/2" Plywood (min.)
- Water and Air Resistive Barrier
- Membrane Strip
- Receiver for Channel Cover
- Angle Trim Closure
- Neoprene Closure
- Channel Cover
- Backer Rod and Sealant



Notched Angle Trim Closure



Neoprene Closure



Channel Cover

Receiver for Channel Cover

Note: * denotes color side.

ATAS ATAS INTERNATIONAL, INC
 Allentown PA
 610-395-8445
 Mesa AZ
 480-558-7210

TITLE		Rigid Wall II Extruded Endwall Detail	
DWG. NO.	DR	DATE	1/29/2019
	DMR		
MATERIAL	APP	DATE	
	SH. SIZE	SCALE	X:X
	B		

REV. NO.	DATE	DESCRIPTION OF REVISION	BY	APP