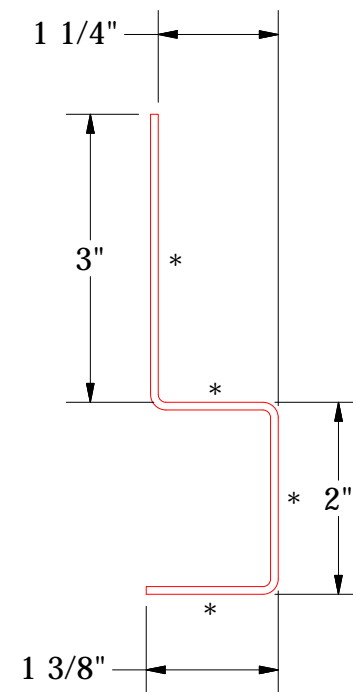
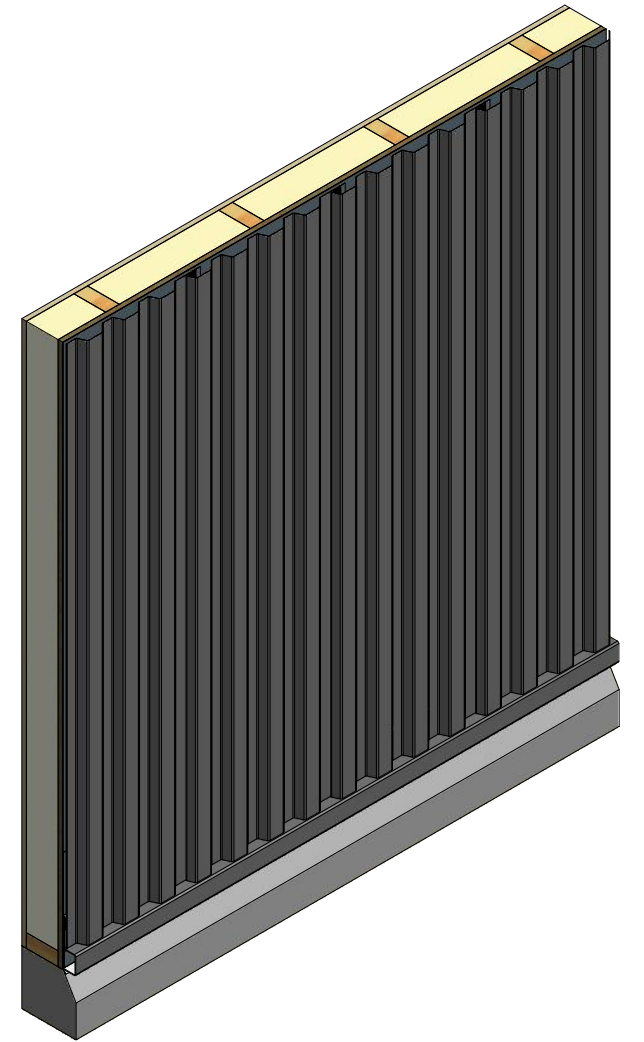
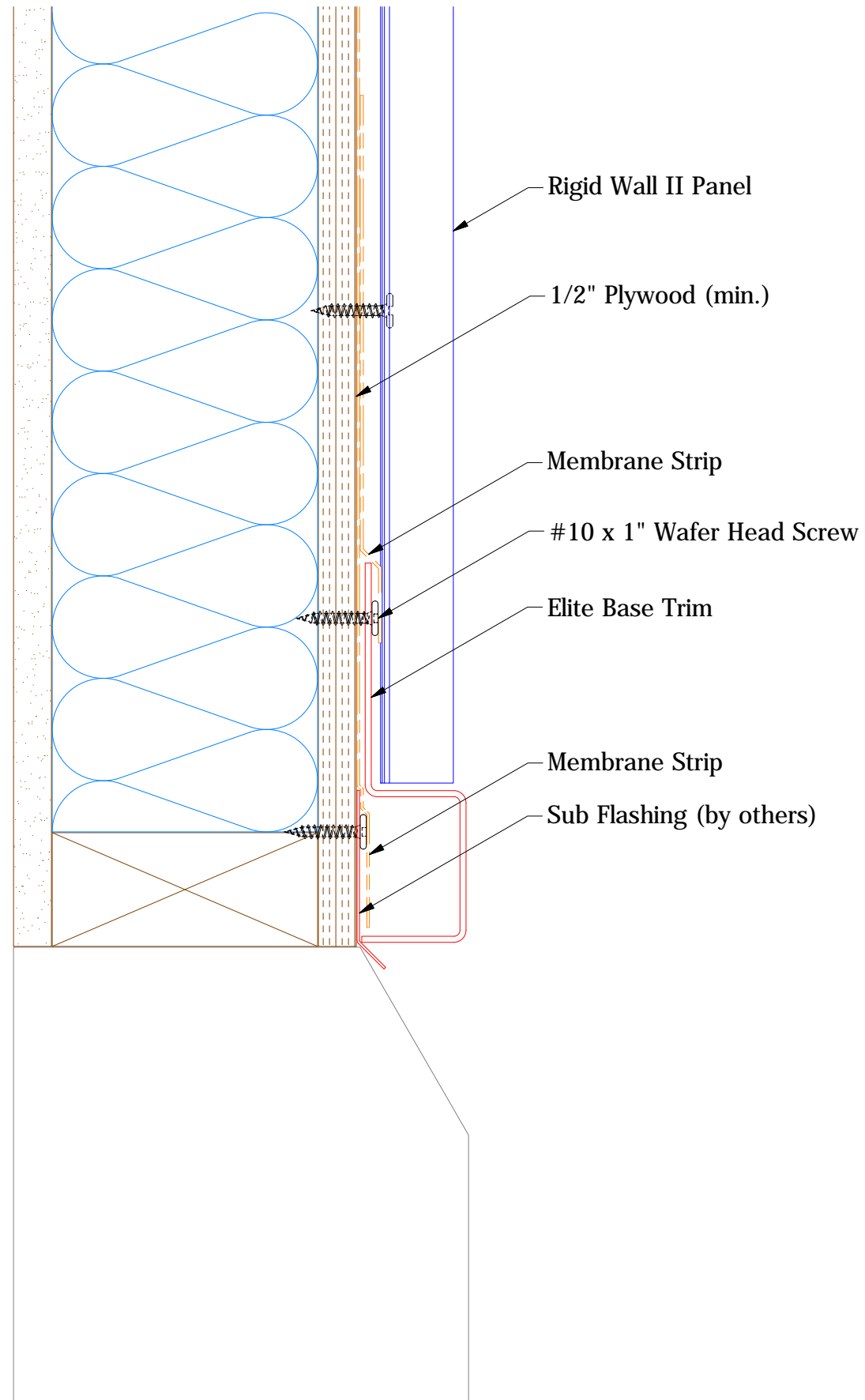
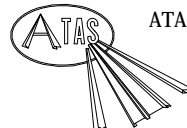


Vertical Panel



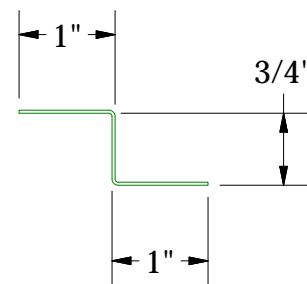
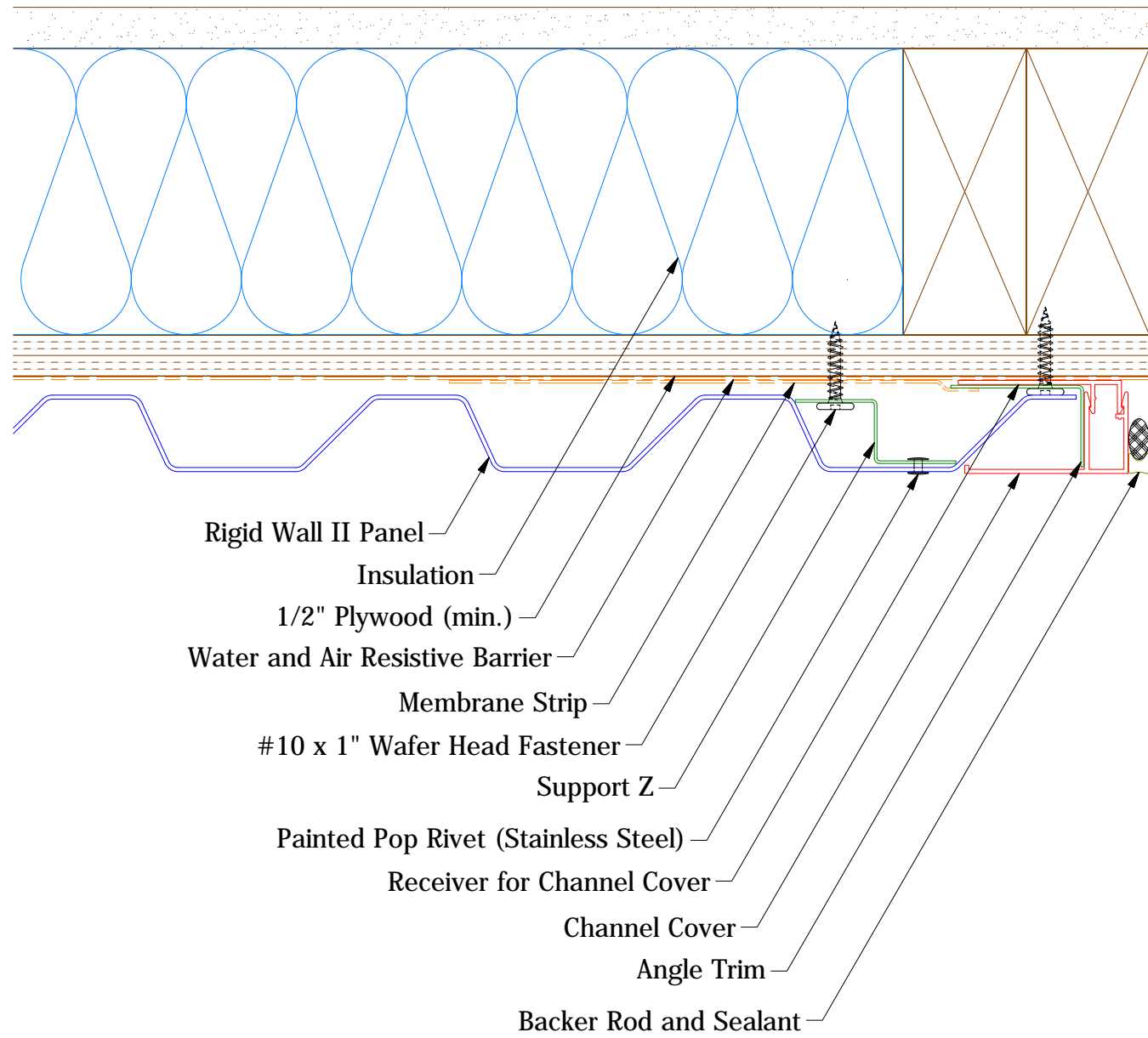
Elite Base Trim

Note: * denotes color side.

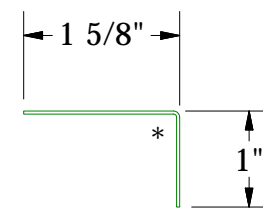
 ATAS INTERNATIONAL, INC Allentown PA 610-395-8445 Mesa AZ 480-558-7210	
TITLE Rigid Wall II Elite Base Detail	
DWG. NO. DR DMR APP	DATE 1/25/2019 DATE
REV. NO. DATE DESCRIPTION OF REVISION BY APP	MATERIAL SH. SIZE B SCALE X:X

01	5/8/2020	Updated Extruded Base Trim to Elite Base Trim	KRK	
----	----------	---	-----	--

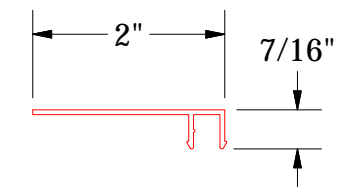
Vertical Panel



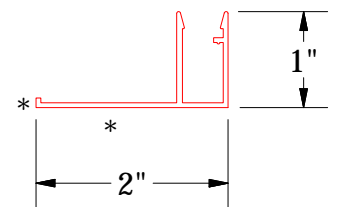
Support Z



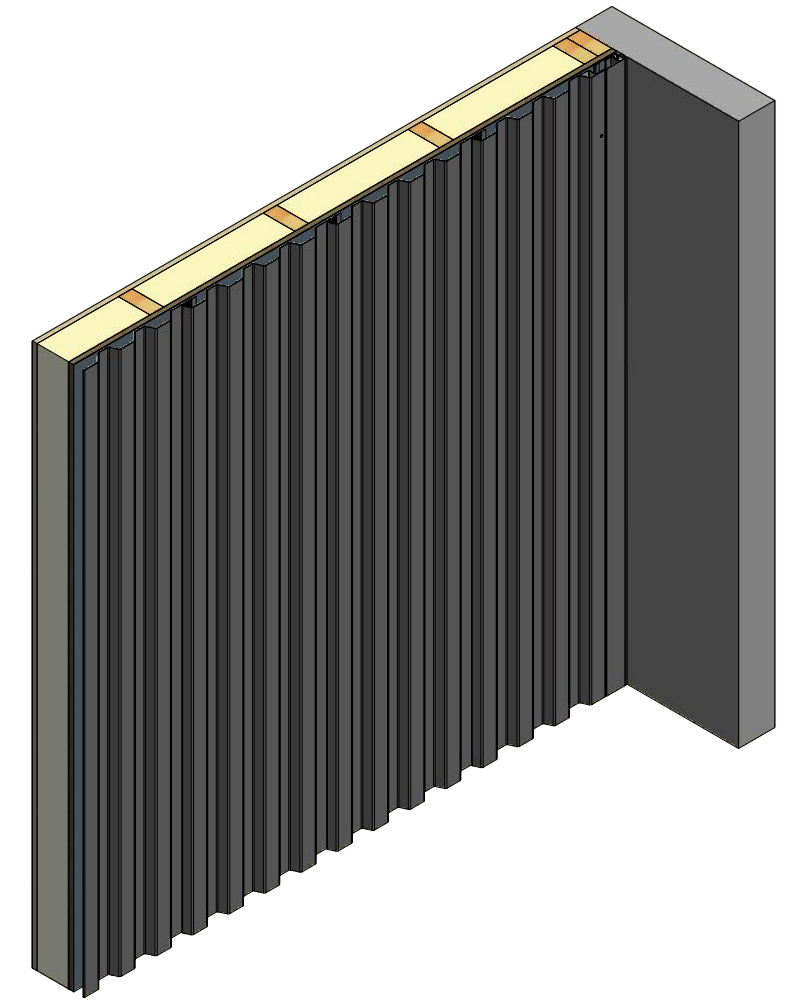
Angle Trim



Receiver for Channel Cover



Channel Cover



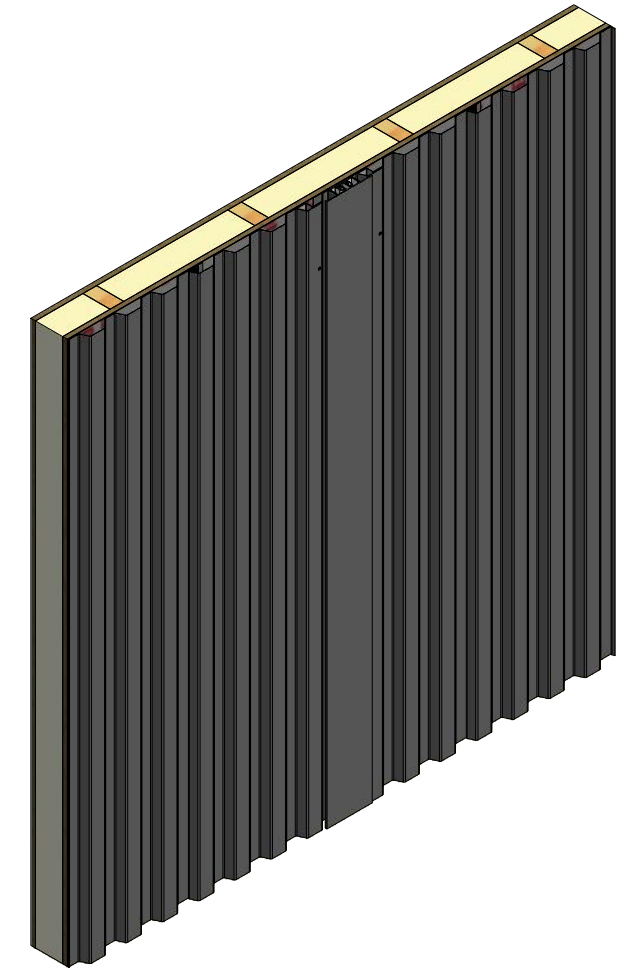
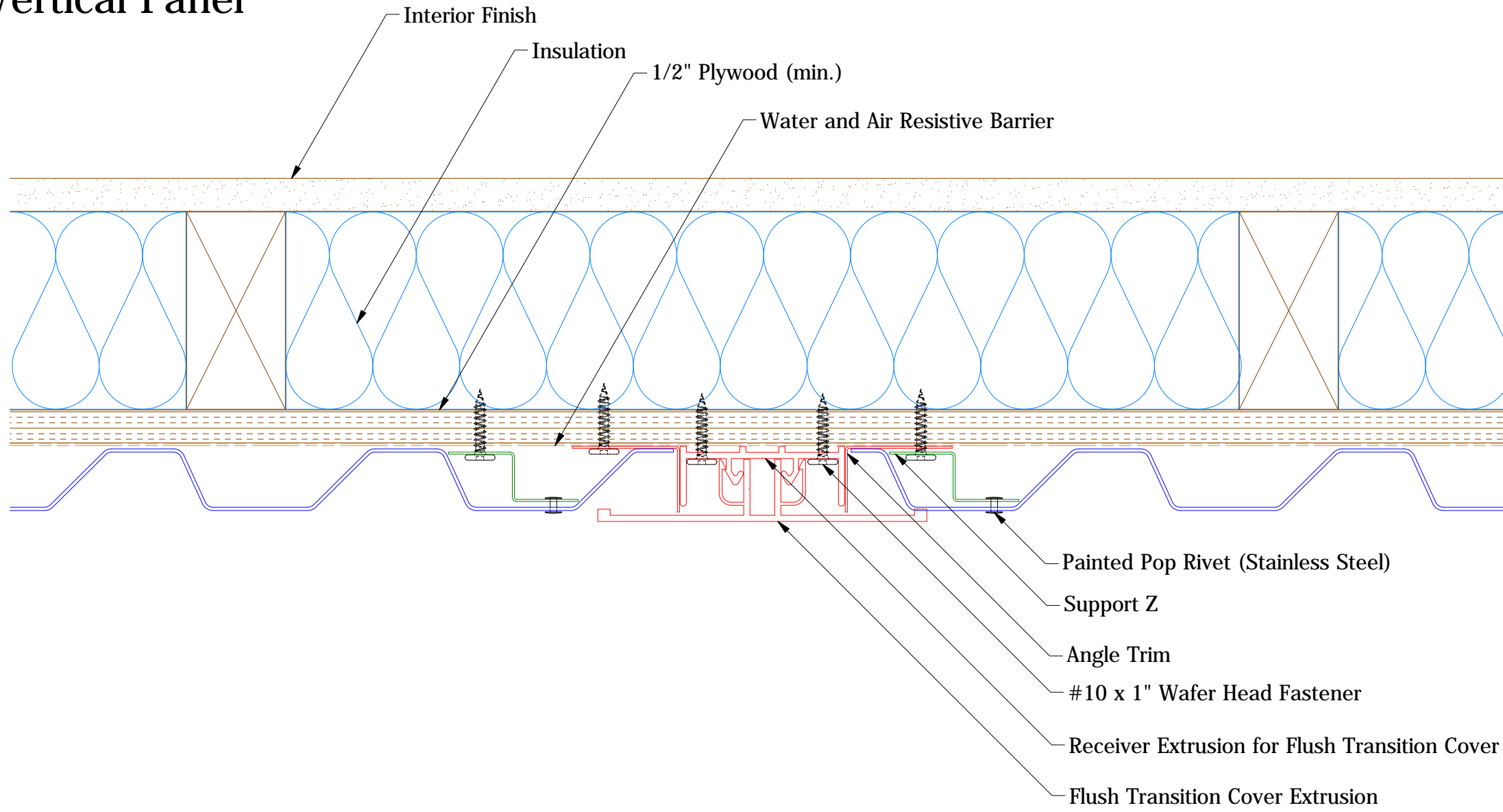
Note: * denotes color side.


ATAS INTERNATIONAL, INC
 Allentown PA
 610-395-8445
 Mesa AZ
 480-558-7210

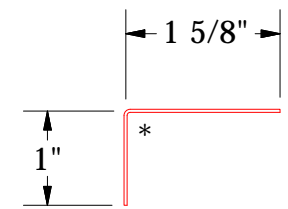
TITLE
Rigid Wall II Extruded Endwall Detail

REV. NO.	DATE	DESCRIPTION OF REVISION	BY	APP	DWG. NO.	DR	DMR	DATE	1/29/2019
						APP		DATE	
					MATERIAL	SH. SIZE	B	SCALE	X:X

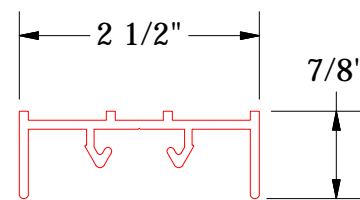
Vertical Panel



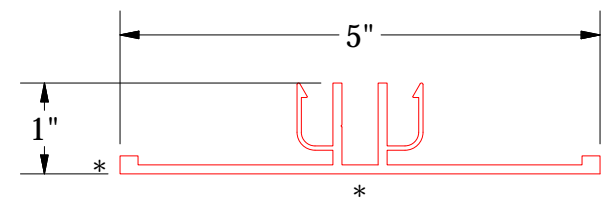
- Painted Pop Rivet (Stainless Steel)
- Support Z
- Angle Trim
- #10 x 1" Wafer Head Fastener
- Receiver Extrusion for Flush Transition Cover
- Flush Transition Cover Extrusion



MCA680 - Angle Trim

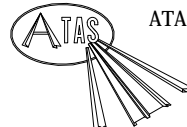


MAY902 - Receiver Extrusion for Flush Transition Cover



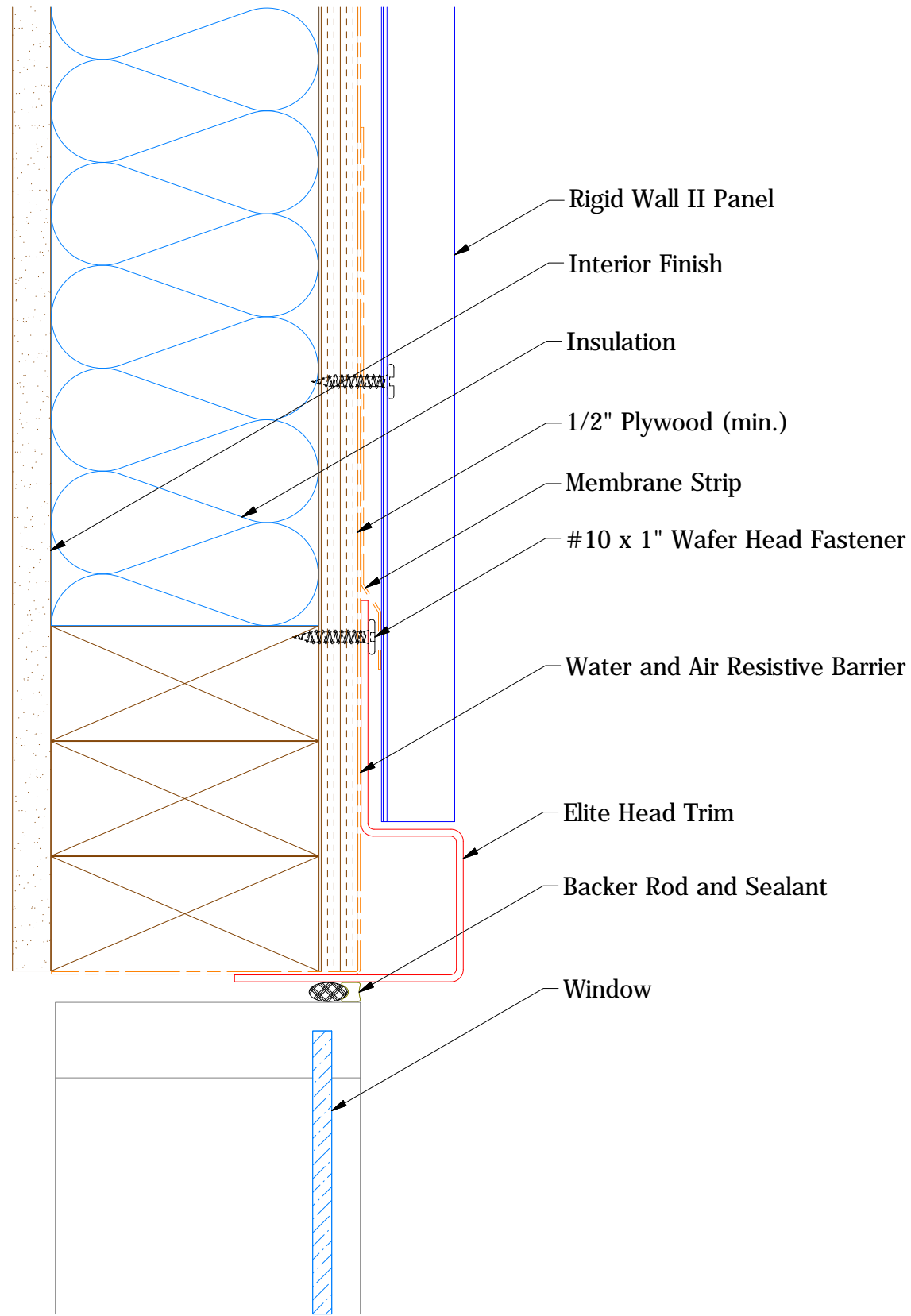
MAY102 - Flush Transition Cover Extrusion

Note: * denotes color side.

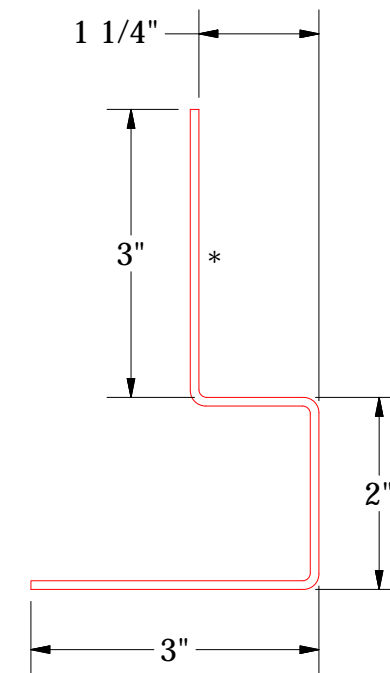
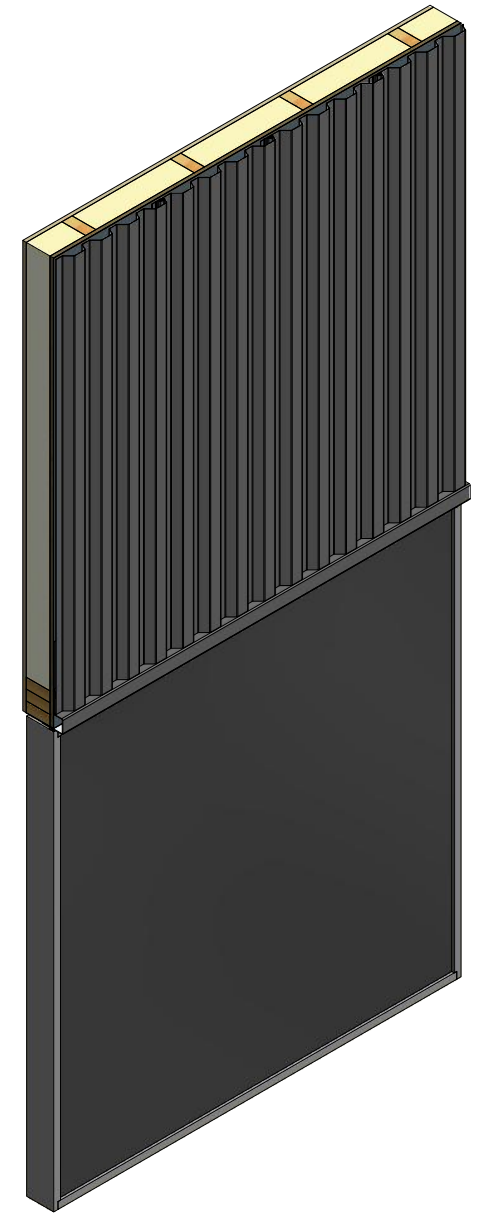
 ATAS INTERNATIONAL, INC Allentown PA 610-395-8445 Mesa AZ 480-558-7210		TITLE Rigid Wall II Extruded Flush Detail	
		DWG. NO.	DR
	APP	DMR	2/7/2019
		DATE	
MATERIAL	SH. SIZE	B	SCALE
			X:X

REV. NO.	DATE	DESCRIPTION OF REVISION	BY	APP

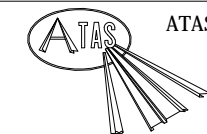
Vertical Panel



Note: * denotes color side.



Elite Head Trim

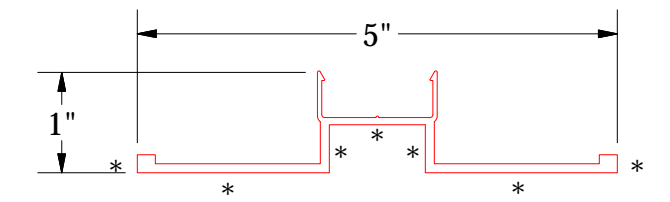
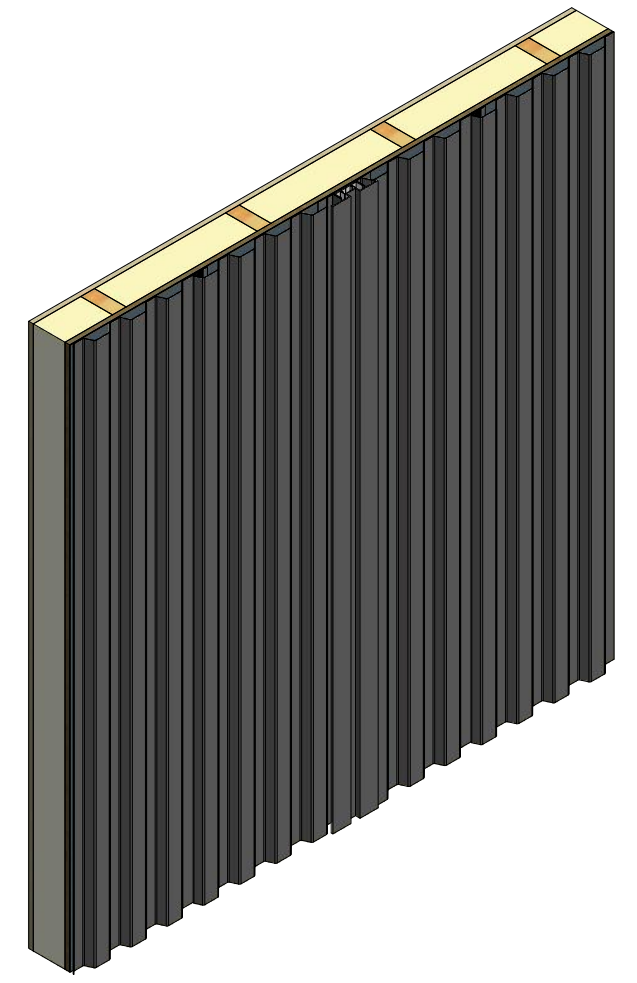
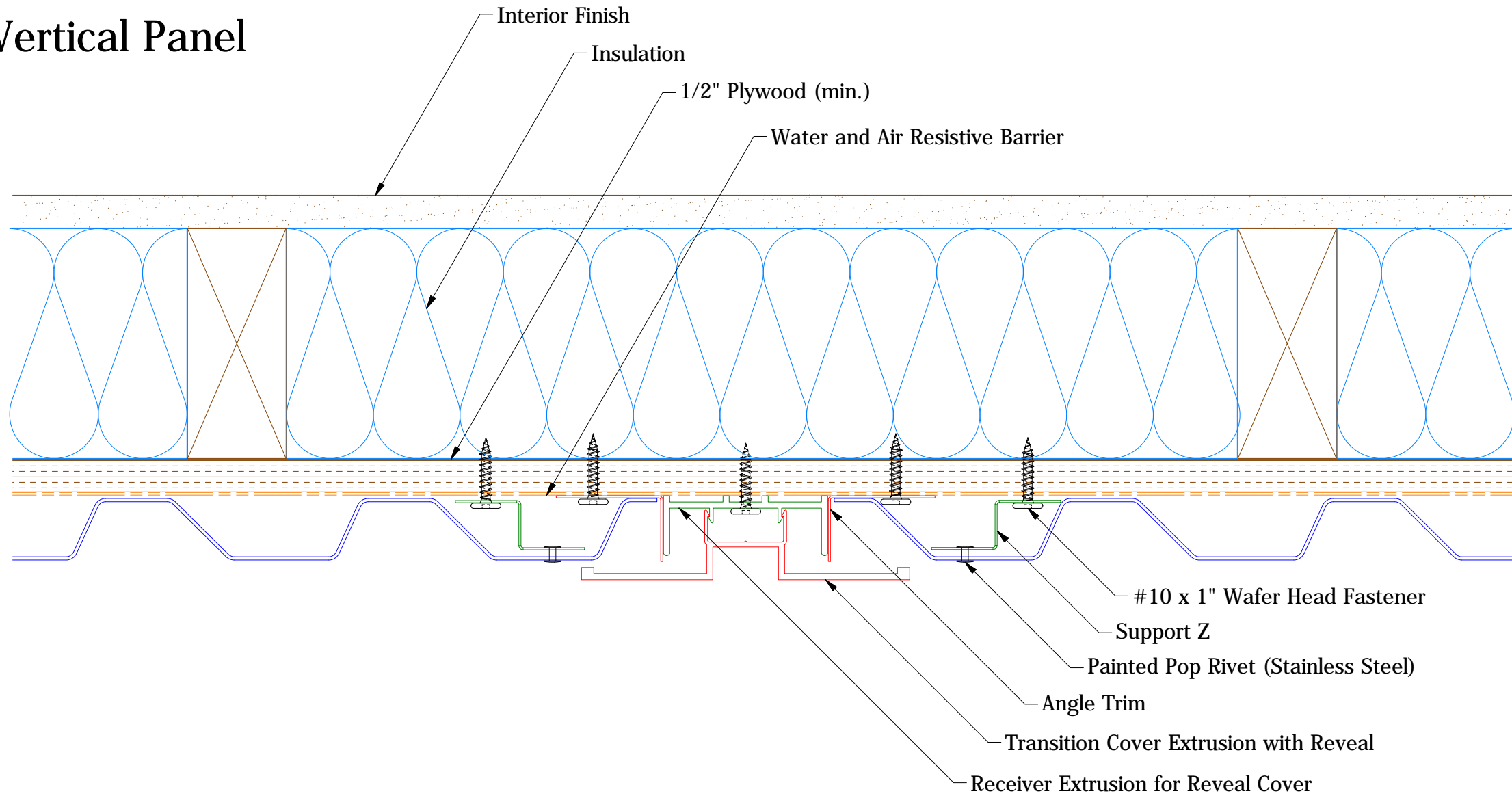


ATAS INTERNATIONAL, INC
 Allentown PA
 610-395-8445
 Mesa AZ
 480-558-7210

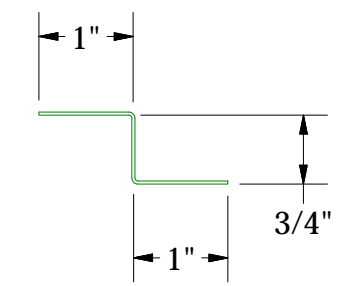
TITLE			Rigid Wall II Elite Head Detail		
DWG. NO.		DR	DMR	DATE	2/1/2019
		APP		DATE	
MATERIAL			SH. SIZE	B	SCALE
					X:X

REV. NO.	DATE	DESCRIPTION OF REVISION	BY	APP

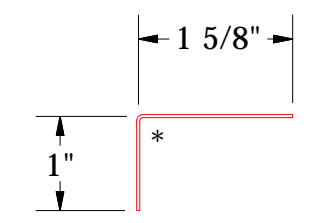
Vertical Panel



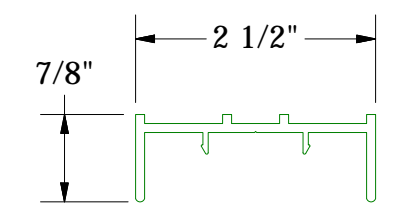
Transition Cover Extrusion with Reveal



Support Z




MCA680 - Angle Trim

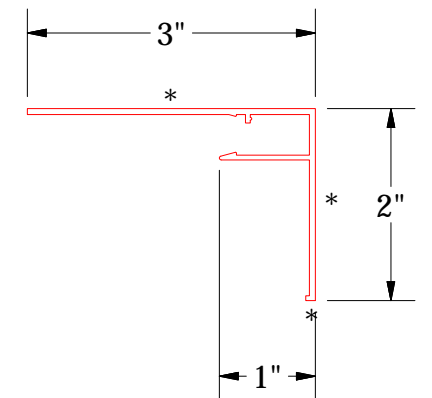
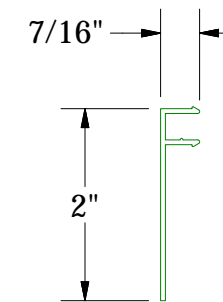
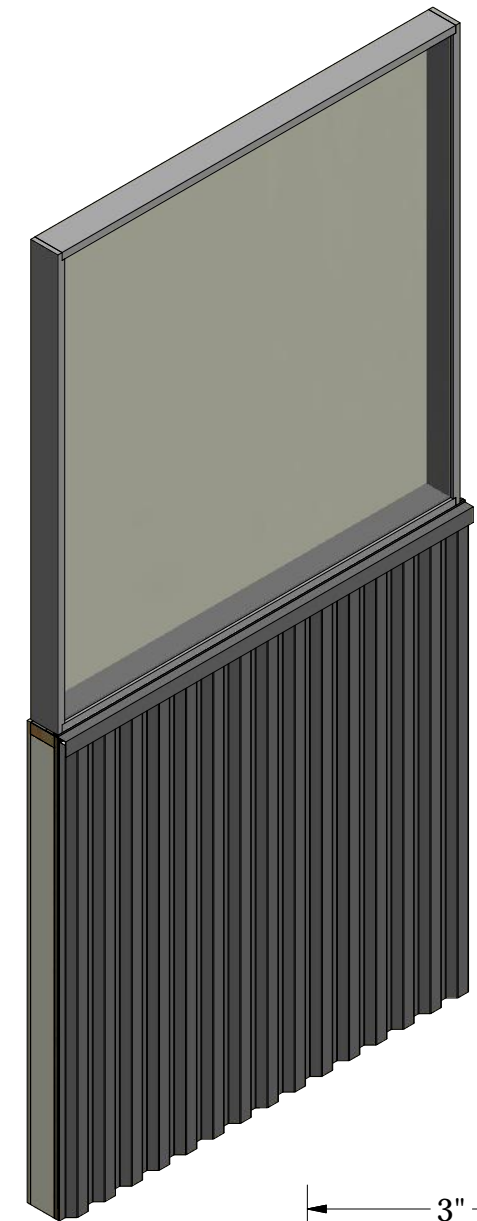
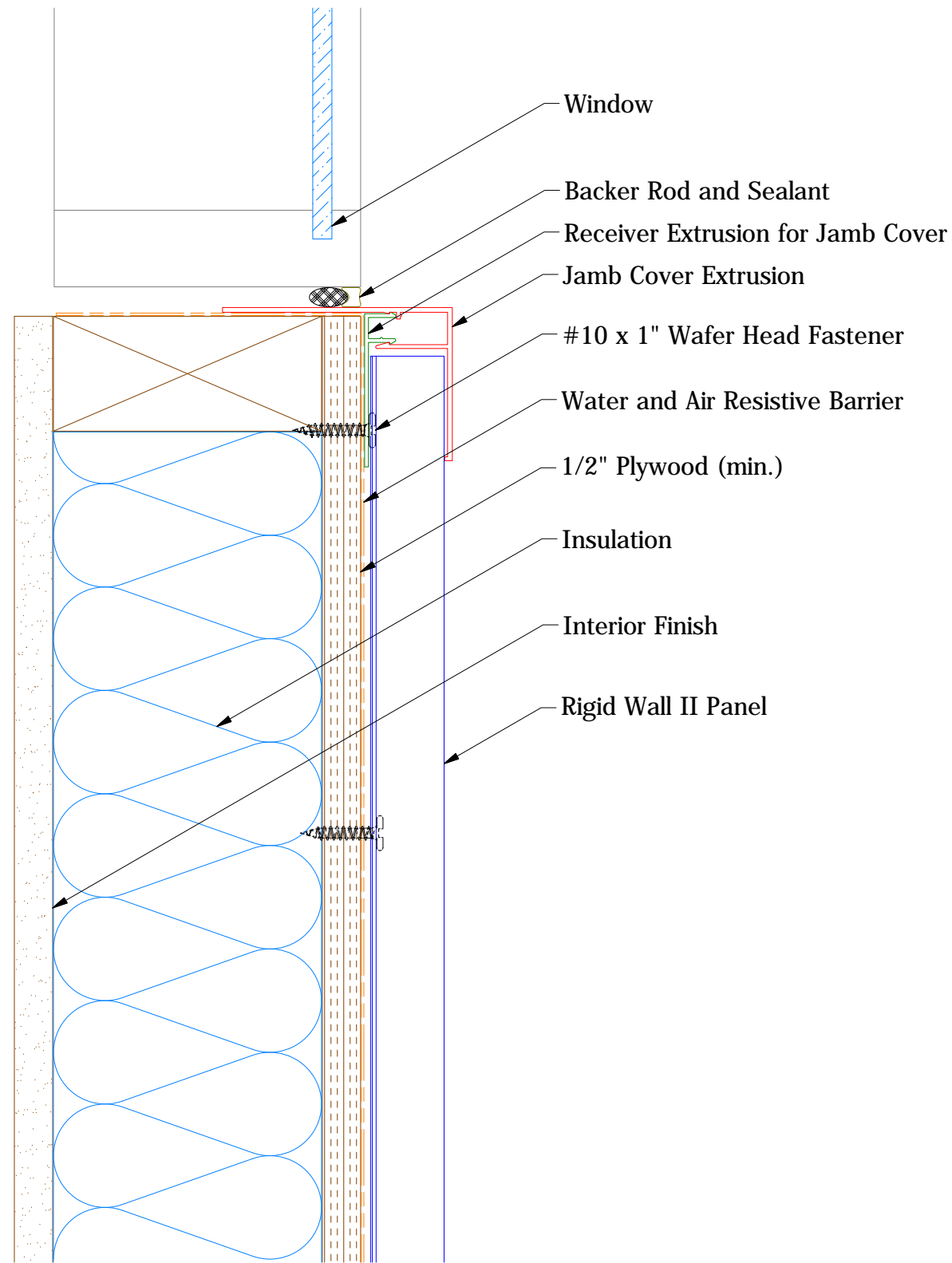


Receiver Extrusion for Reveal Cover

Note: * denotes color side.

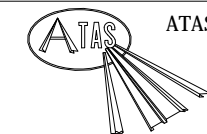
 ATAS INTERNATIONAL, INC Allentown PA 610-395-8445 Mesa AZ 480-558-7210		TITLE Rigid Wall II Extruded Reveal Detail			
		DWG. NO.	DR	DATE	
REV. NO.		DATE	DESCRIPTION OF REVISION	BY	APP
MATERIAL		SH. SIZE	SCALE		
		B	X:X		

Vertical Panel



Jamb Cover

Receiver Extrusion for Jamb Cover



ATAS INTERNATIONAL, INC
 Allentown PA
 610-395-8445
 Mesa AZ
 480-558-7210

TITLE Rigid Wall II Extruded Window Sill Detail

REV. NO.	DATE	DESCRIPTION OF REVISION	BY	APP	DWG. NO.	DR	DMR	DATE	2/14/2019
						APP		DATE	
					MATERIAL	SH. SIZE	B	SCALE	X:X

Note: * denotes color side.