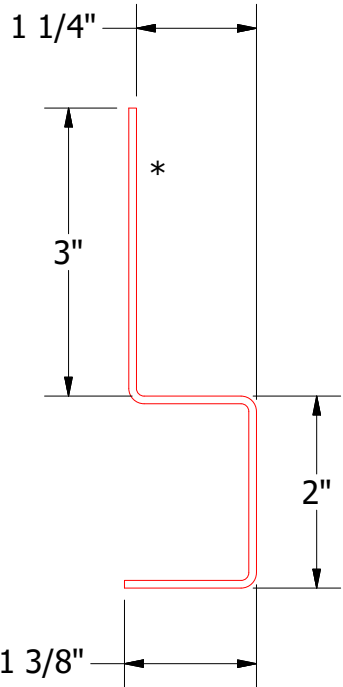
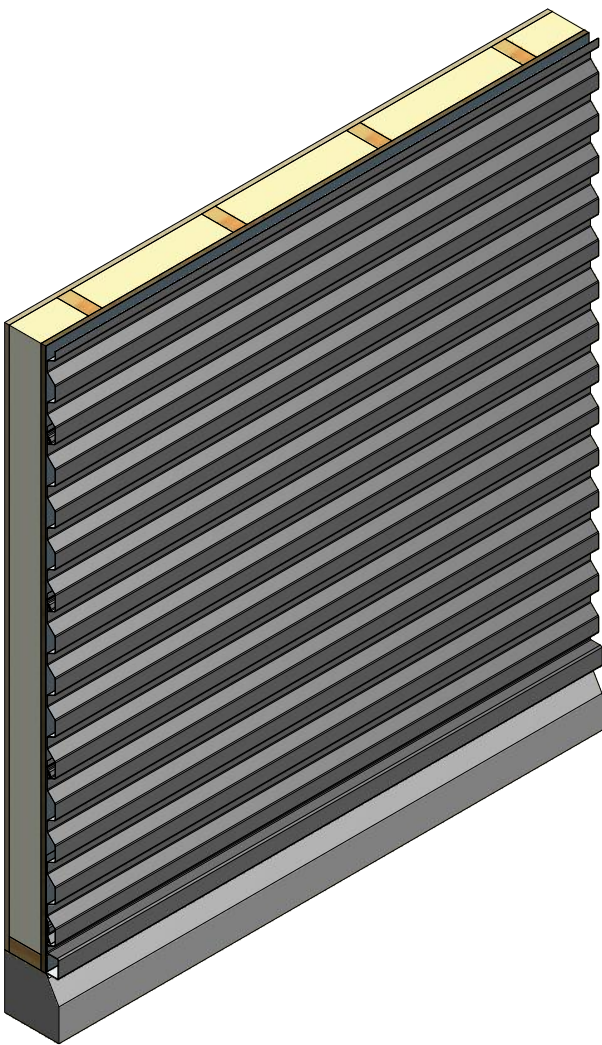
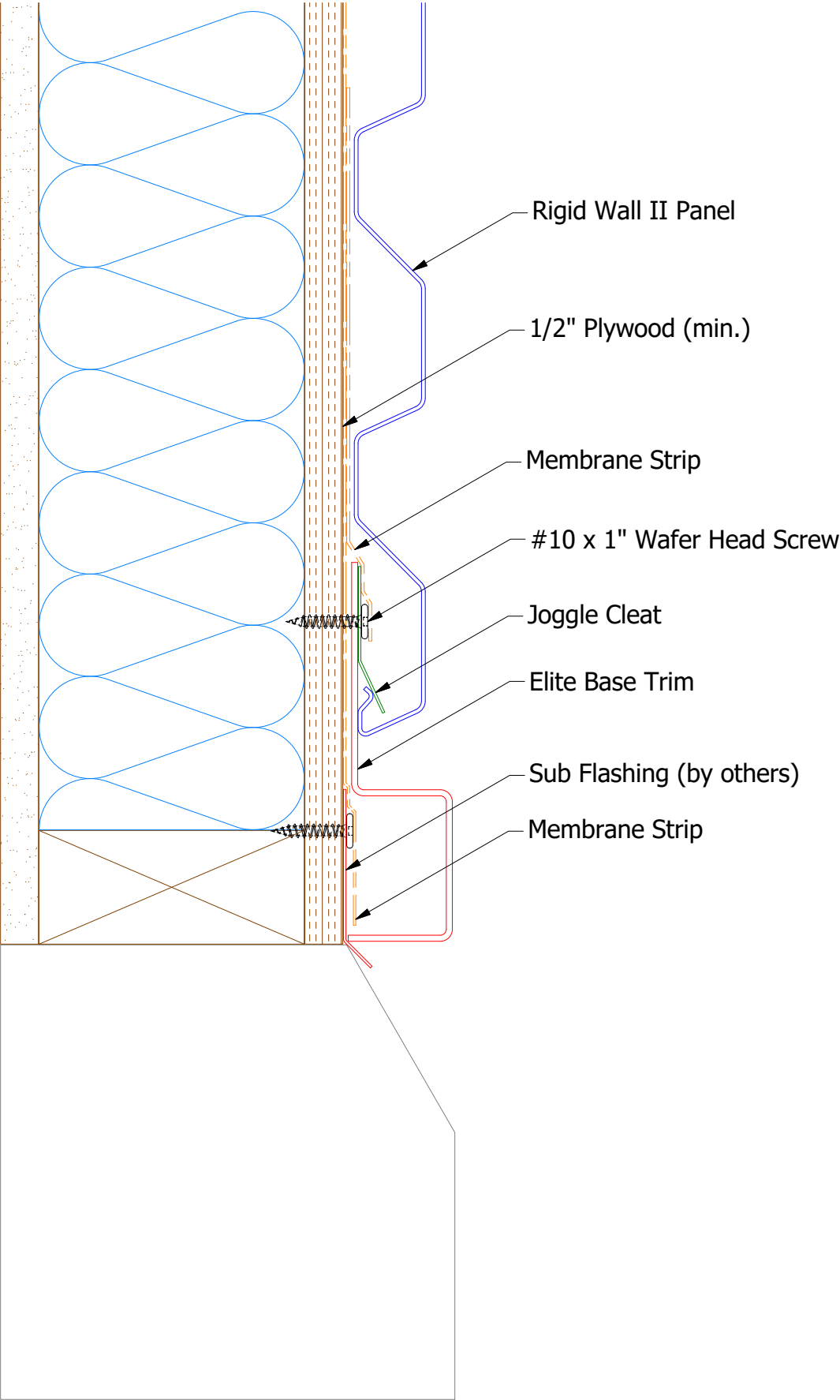
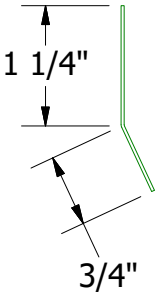


Horizontal Panel



Elite Base Trim



Starter Cleat

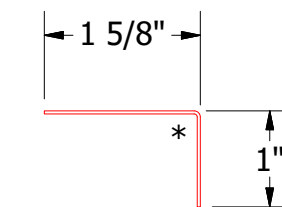
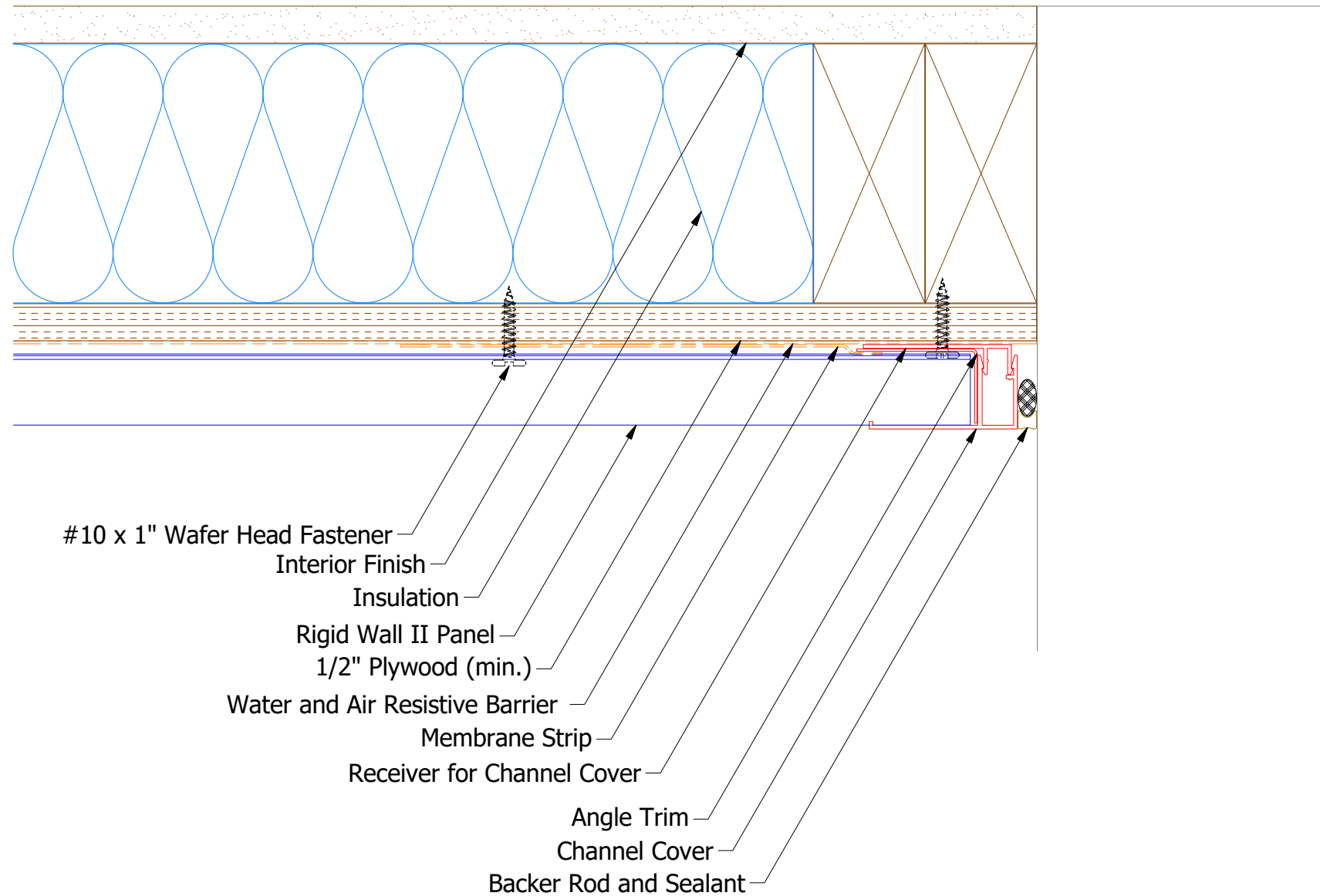
Note: * denotes color side.

						TITLE Rigid Wall II Elite Base Detail	
				DWG. NO.		DR DMR	DATE 1/25/2019
01		5/8/2020		Updated Extruded Base Trim to Elite Base Trim		APP	DATE
REV. NO.	DATE	DESCRIPTION OF REVISION		BY	APP	MATERIAL	SH. SIZE B
							SCALE X:X

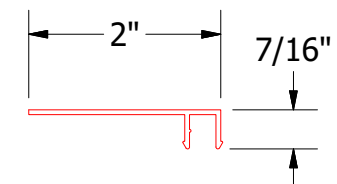


ATAS INTERNATIONAL, INC
Allentown PA
610-395-8445
Mesa AZ
480-558-7210

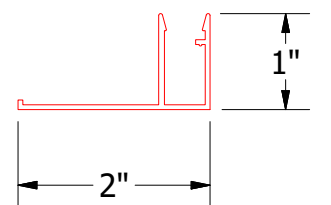
Horizontal Panel



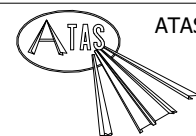
Angle Trim



Receiver for Channel Cover



Channel Cover

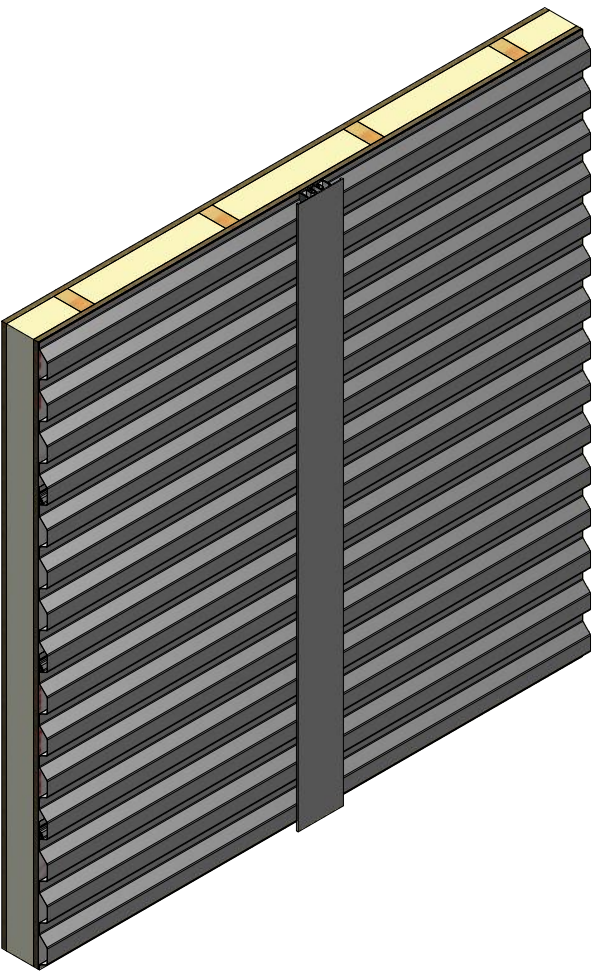
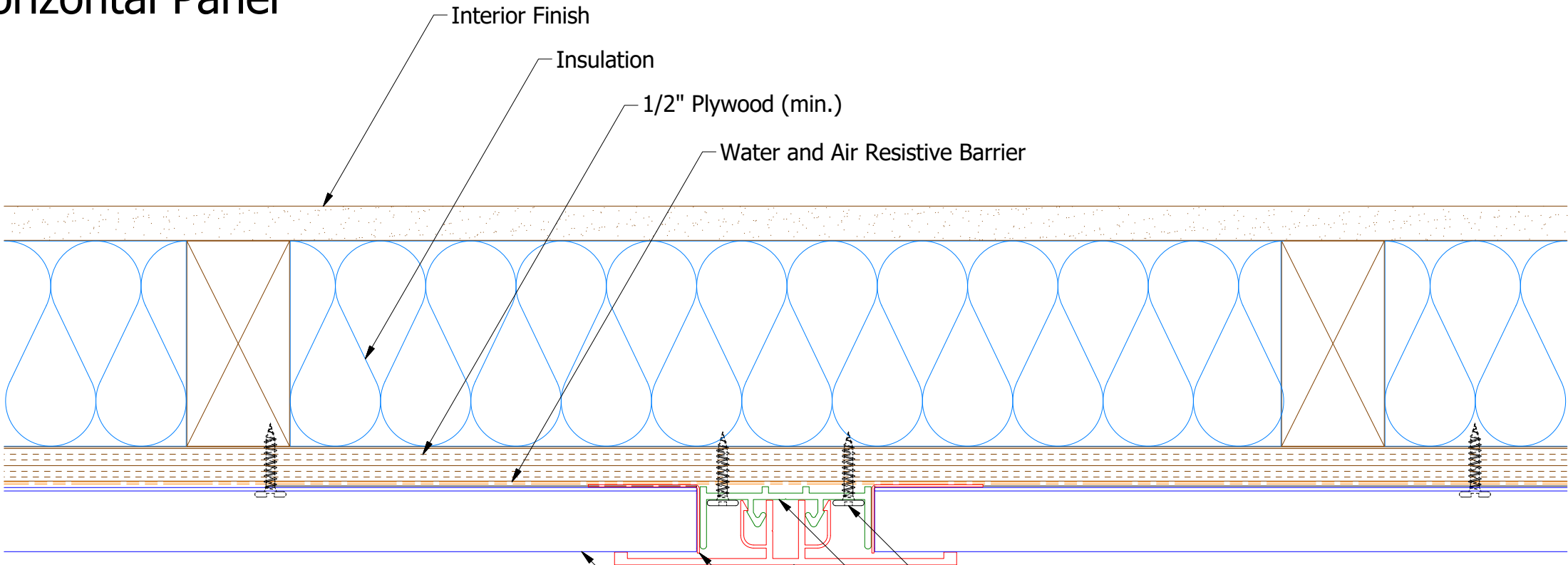


ATAS INTERNATIONAL, INC
Allentown PA
610-395-8445
Mesa AZ
480-558-7210

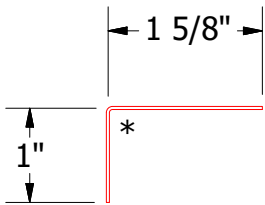
Note: * denotes color side.

					TITLE: Rigid Wall II Extruded Endwall Detail				
					DWG. NO.			DR	DATE
								DMR	1/29/2019
					MATERIAL			APP	DATE
REV. NO.	DATE	DESCRIPTION OF REVISION	BY	APP				SH. SIZE	SCALE
								B	X:X

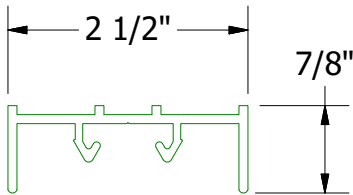
Horizontal Panel



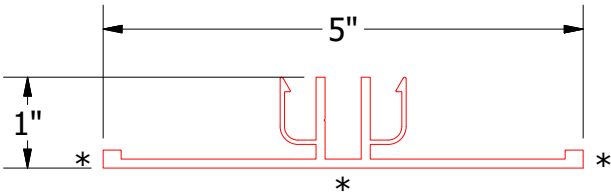
- #10 x 1" Wafer Head Fastener
- Receiver Extrusion for Flush Transition Cover
- Flush Transition Cover Extrusion
- Angle Trim
- Rigid Wall II Panel



MCA680 - Angle Trim

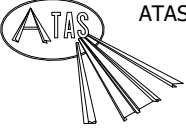


MAY902 - Receiver Extrusion for Flush Transition Cover

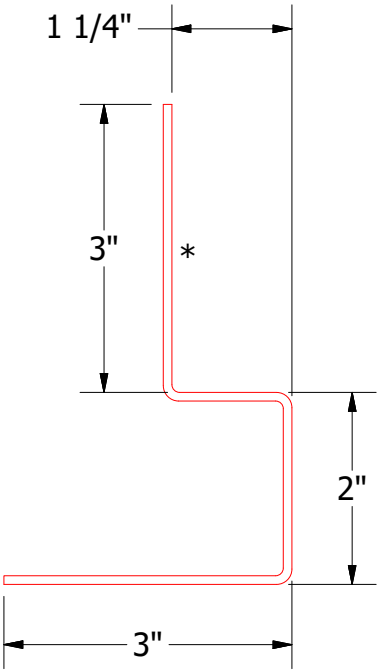
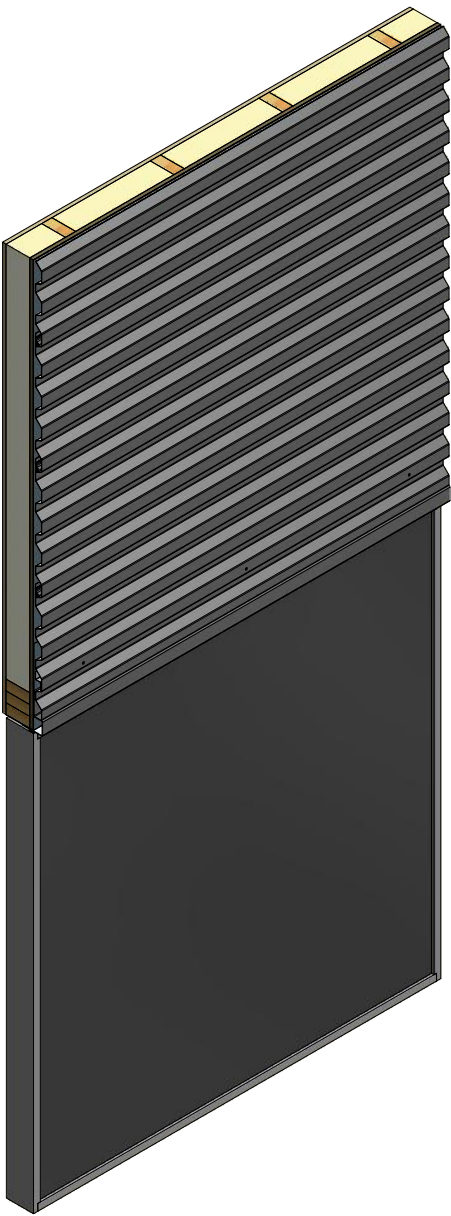
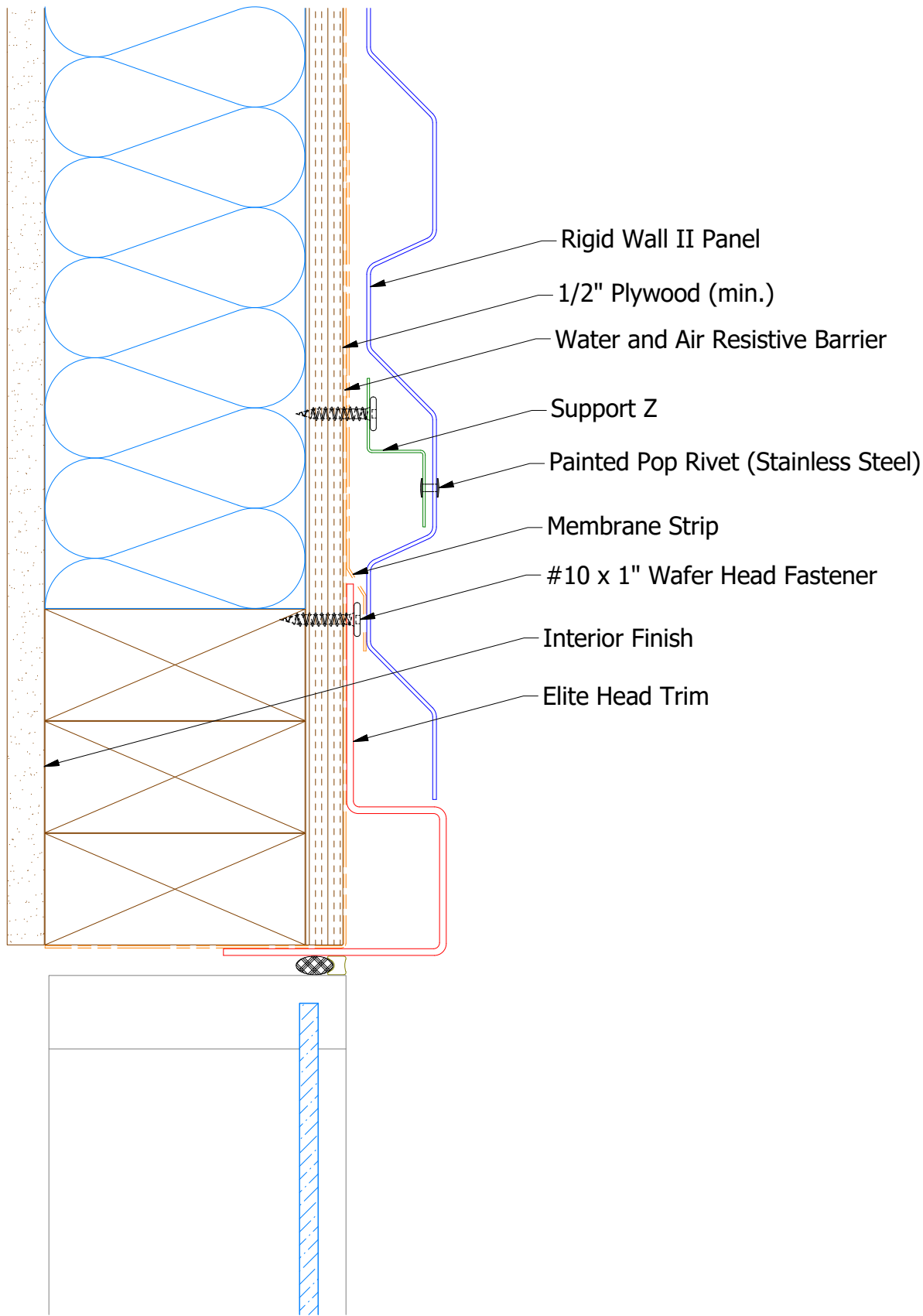


MAY102 - Flush Transition Cover Extrusion

Note: * denotes color side.

				 ATAS INTERNATIONAL, INC Allentown PA 610-395-8445 Mesa AZ 480-558-7210			
				TITLE Rigid Wall II Extruded Flush Detail			
REV. NO.		DATE		DWG. NO.		DR	DATE
						DMR	2/7/2019
						APP	DATE
						MATERIAL	
						SH. SIZE	SCALE
						B	X:X

Horizontal Panel

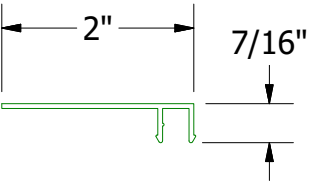
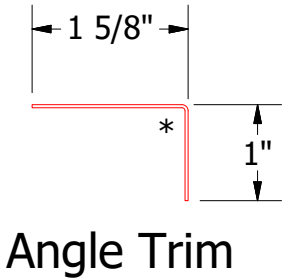
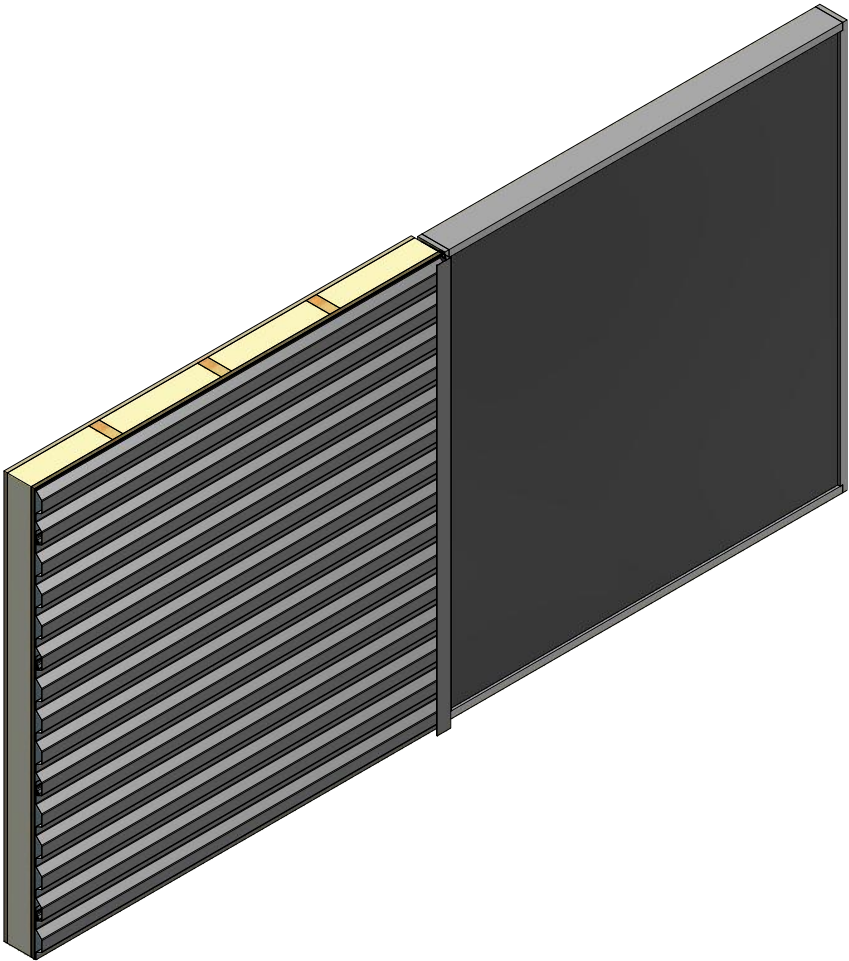
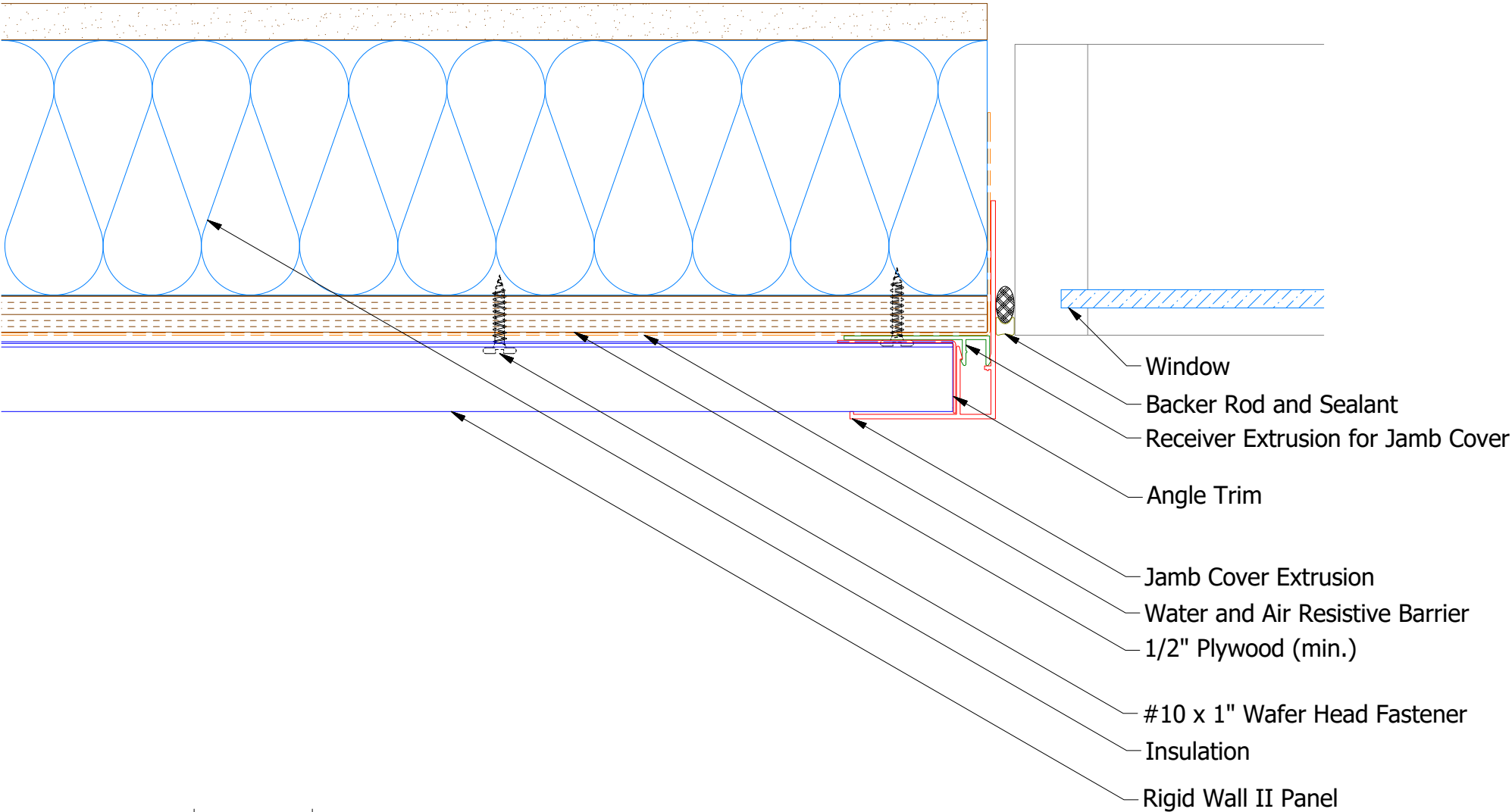


Elite Head Trim

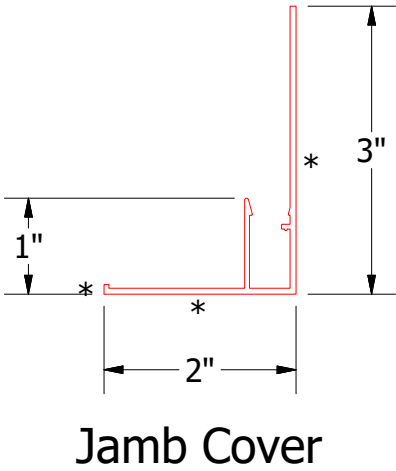
Note: * denotes color side.

								</	

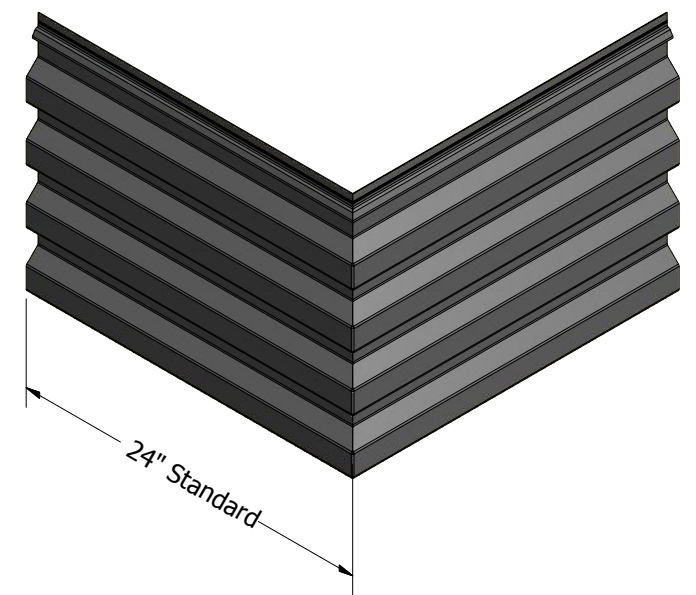
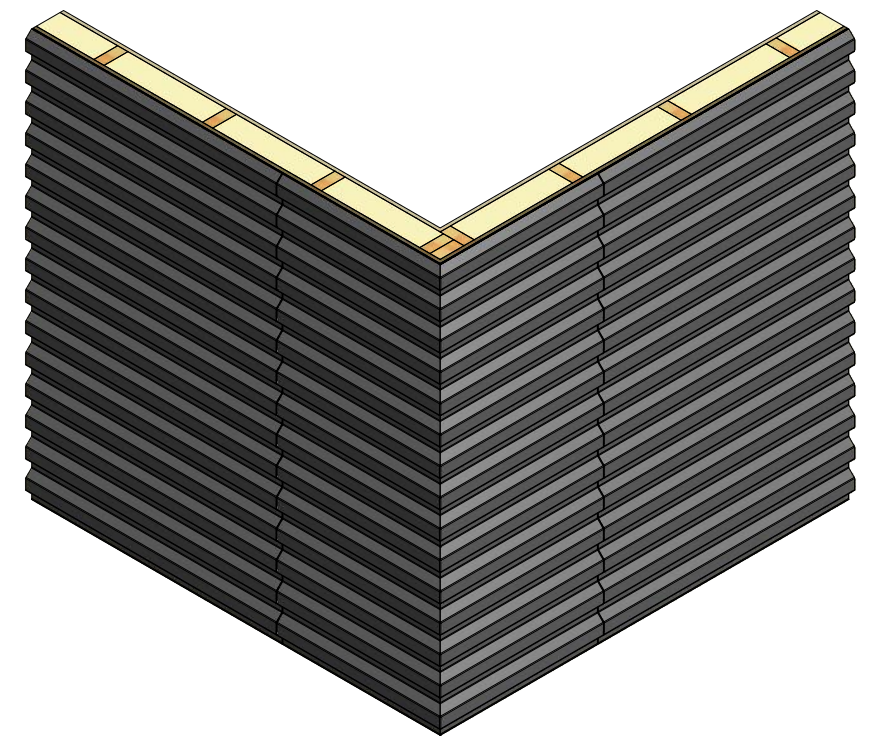
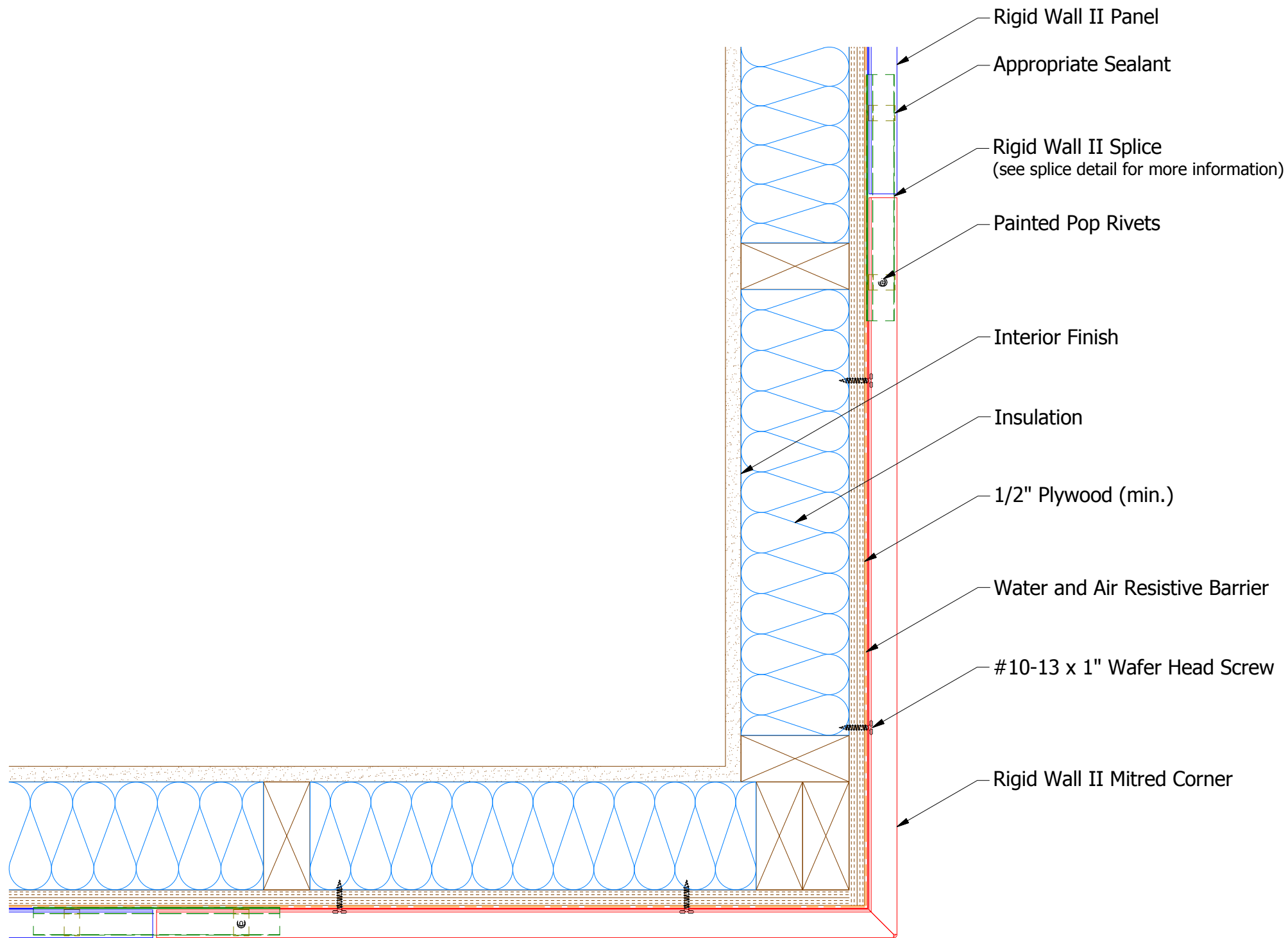
Horizontal Panel



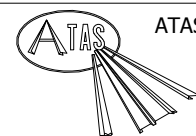
Receiver Extrusion for Jamb Cover



Note: * denotes color side.



Rigid Wall II Mitred Corner

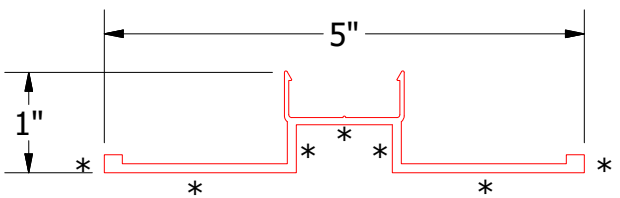
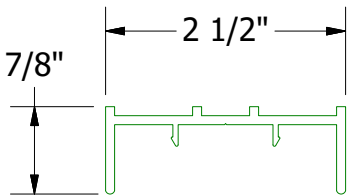
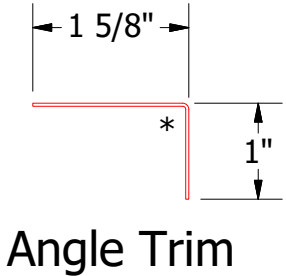
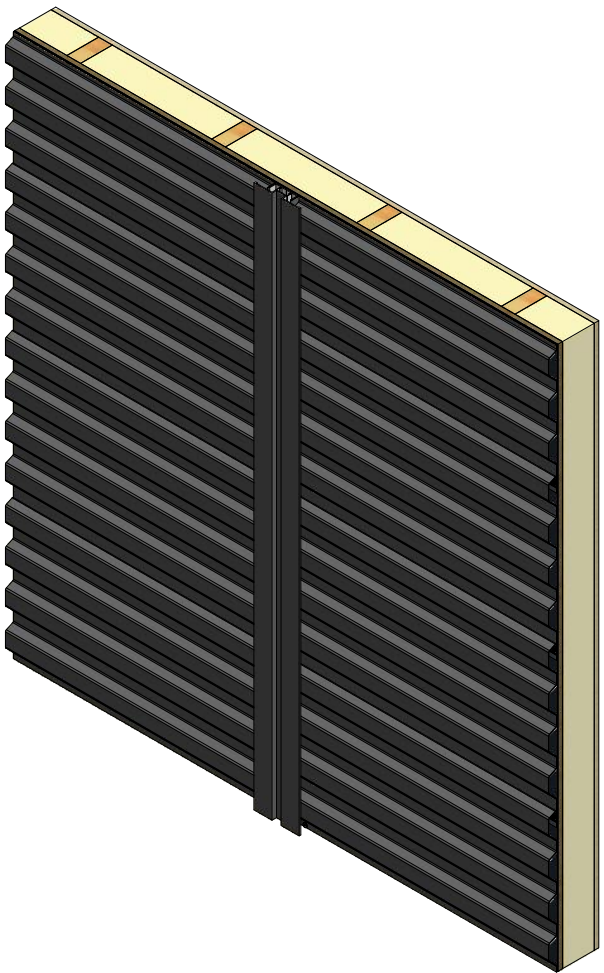
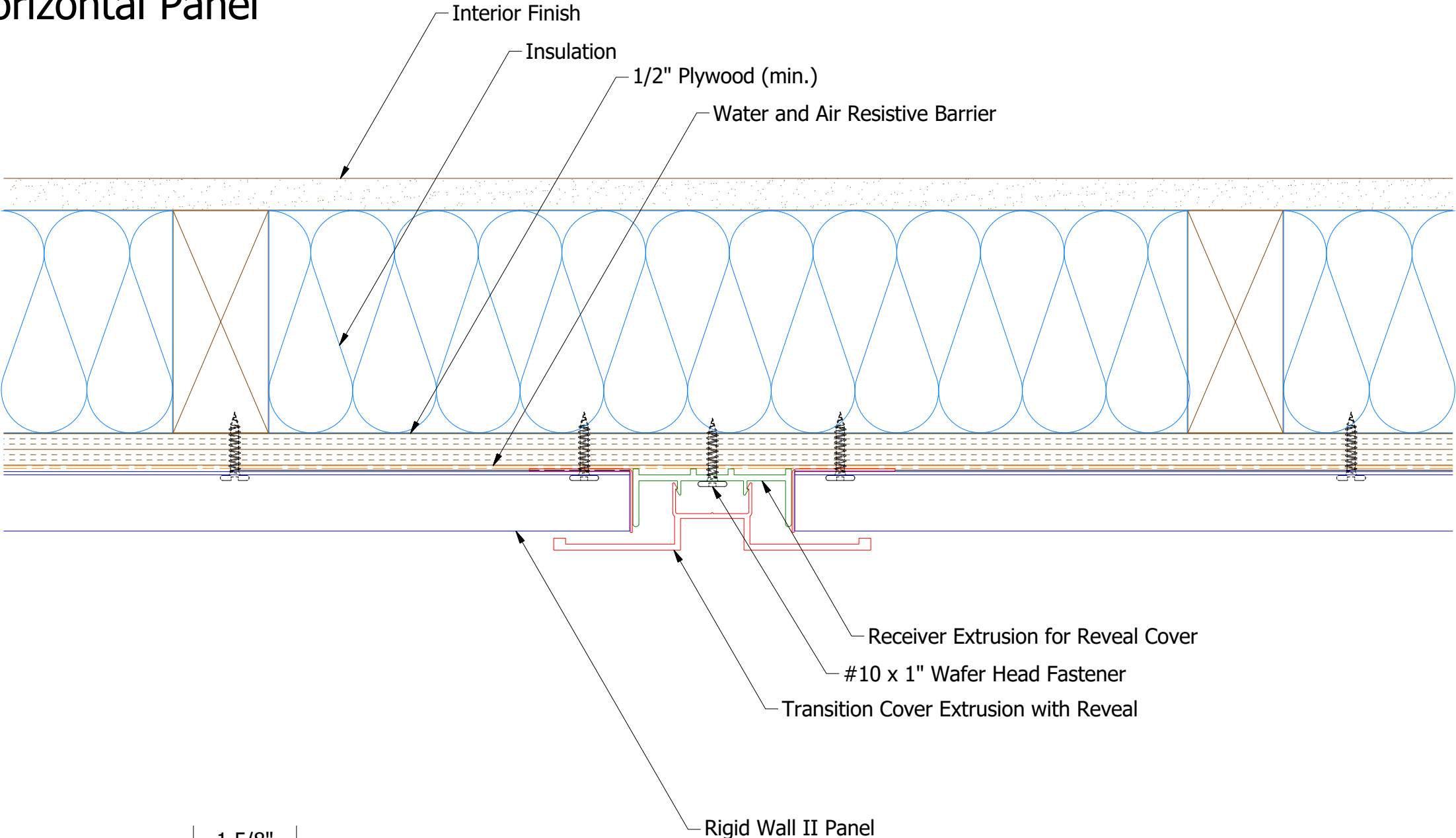


ATAS INTERNATIONAL, INC
 Allentown PA
 610-395-8445
 Mesa AZ
 480-558-7210

TITLE			
Rigid Wall II Mitred Corner Detail			
DWG. NO.	DR	KRK	DATE
	APP		DATE
MATERIAL		SH. SIZE	SCALE
		B	X:X

REV. NO.	DATE	DESCRIPTION OF REVISION	BY	APP

Horizontal Panel

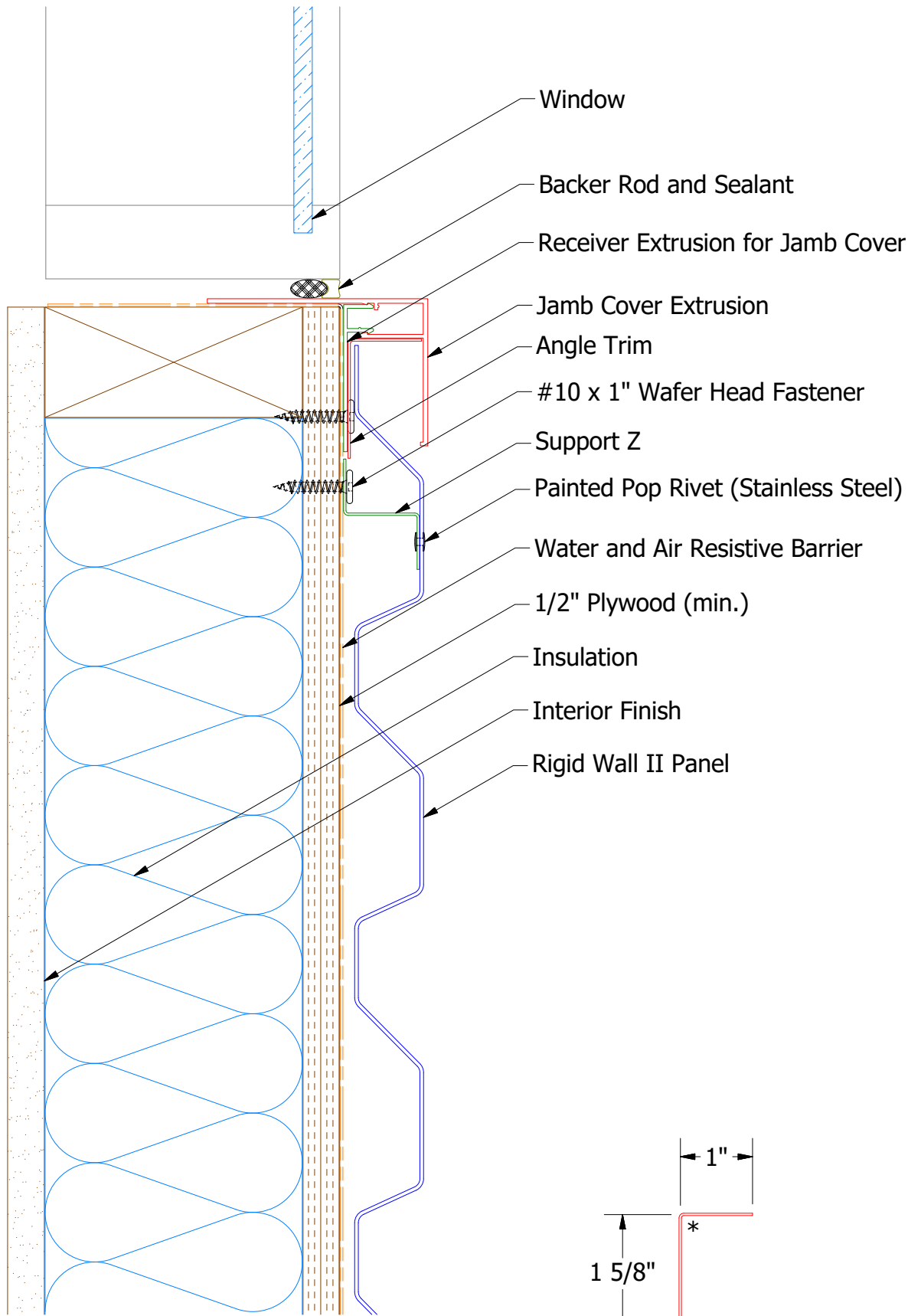


Note: * denotes color side.

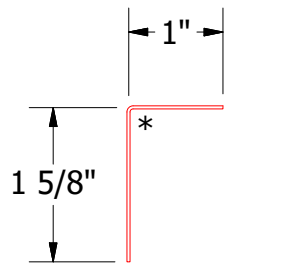
Receiver Extrusion for Reveal Cover

Transition Cover Extrusion with Reveal

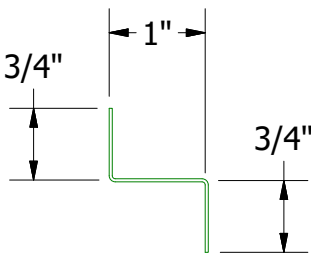
Horizontal Panel



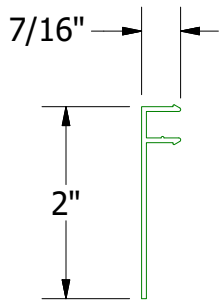
Note: * denotes color side.



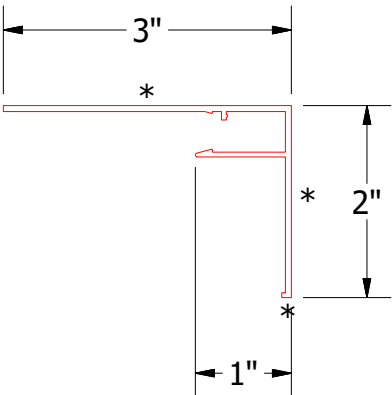
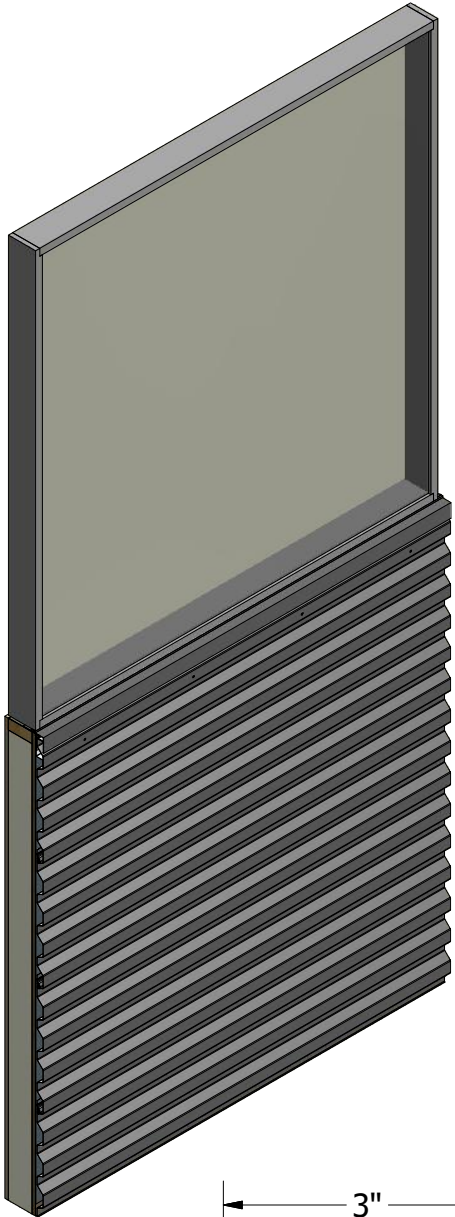
Angle Trim



Support Z



Receiver Extrusion for Jamb Cover



Jamb Cover

					Rigid Wall II Extruded Window Sill Detail				
					DWG. NO.			DR	DATE
								DMR	2/14/2019
								APP	DATE
					MATERIAL				
REV. NO.	DATE	DESCRIPTION OF REVISION			BY	APP	SH. SIZE	SCALE	
							B	X:X	