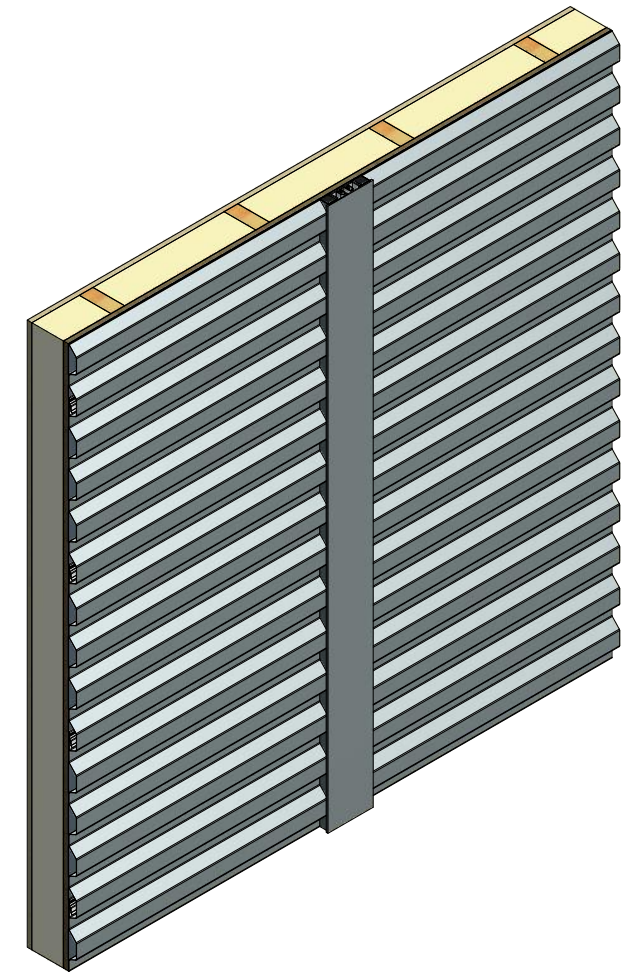
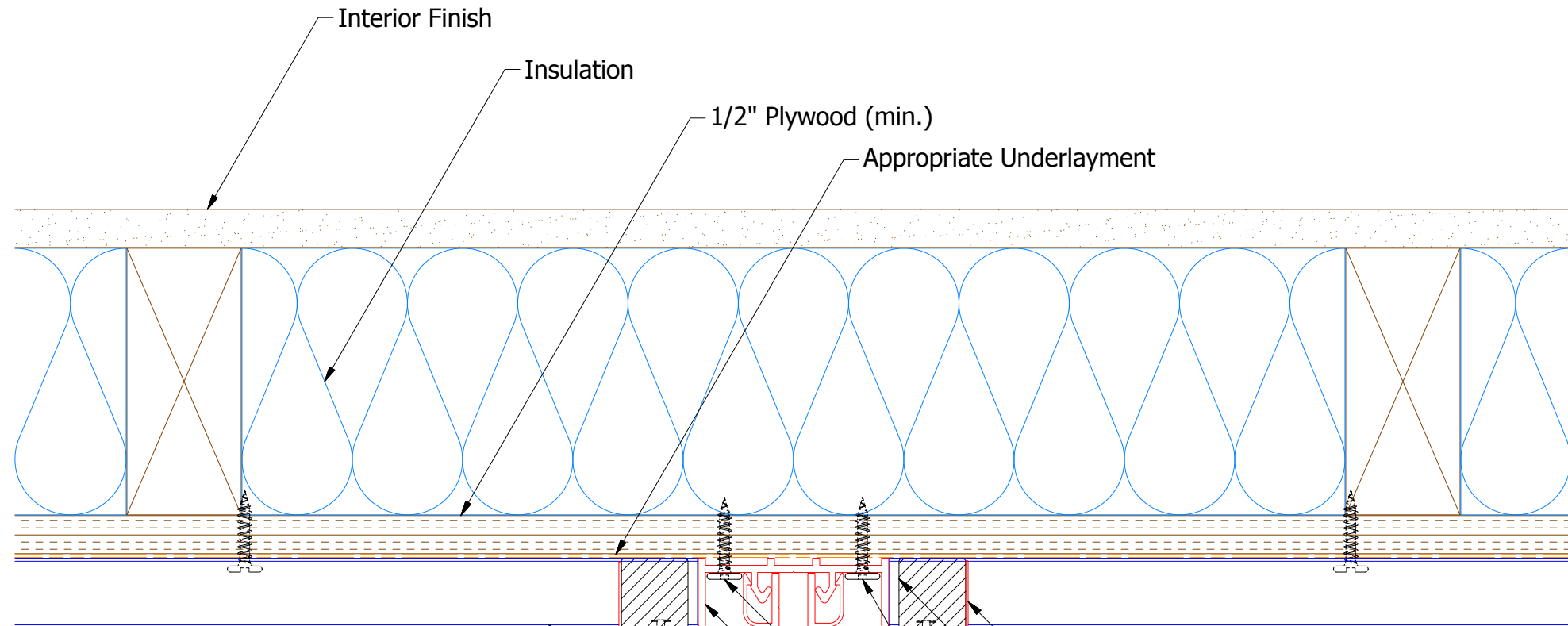
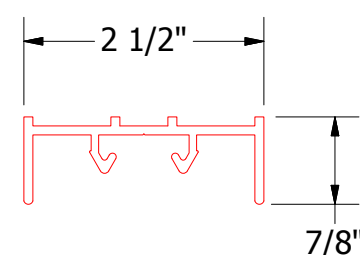


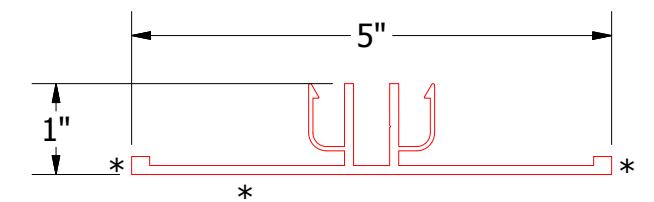
Horizontal Panel



- Metal Closure Angle
- Notched Neoprene
- S.S. Pop Rivets
- Appropriate Fasteners
- Receiver Extrusion for Flush Transition Cover
- Flush Transition Cover Extrusion
- Rigid Wall Panel



Receiver Extrusion for Flush Transition Cover



Flush Transition Cover Extrusion



ATAS INTERNATIONAL, INC
 Allentown PA
 610-395-8445
 Mesa AZ
 480-558-7210

TITLE Flush Transition Extrusion Detail			
DWG. NO.	DR	DATE	
01	KRK	10/31/2014	
REV. NO.	APP	DATE	
01	APP		
DATE	SH. SIZE	SCALE	
03/28/2018	B	X:X	

REV. NO.	DATE	DESCRIPTION OF REVISION	BY	APP
01	03/28/2018	Updated Extrusion Name	KRK	APP