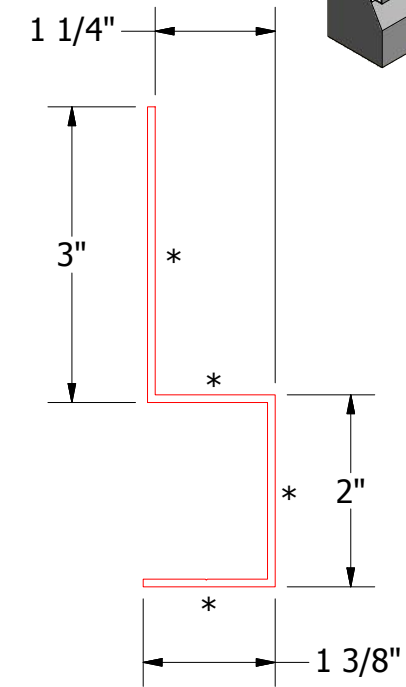
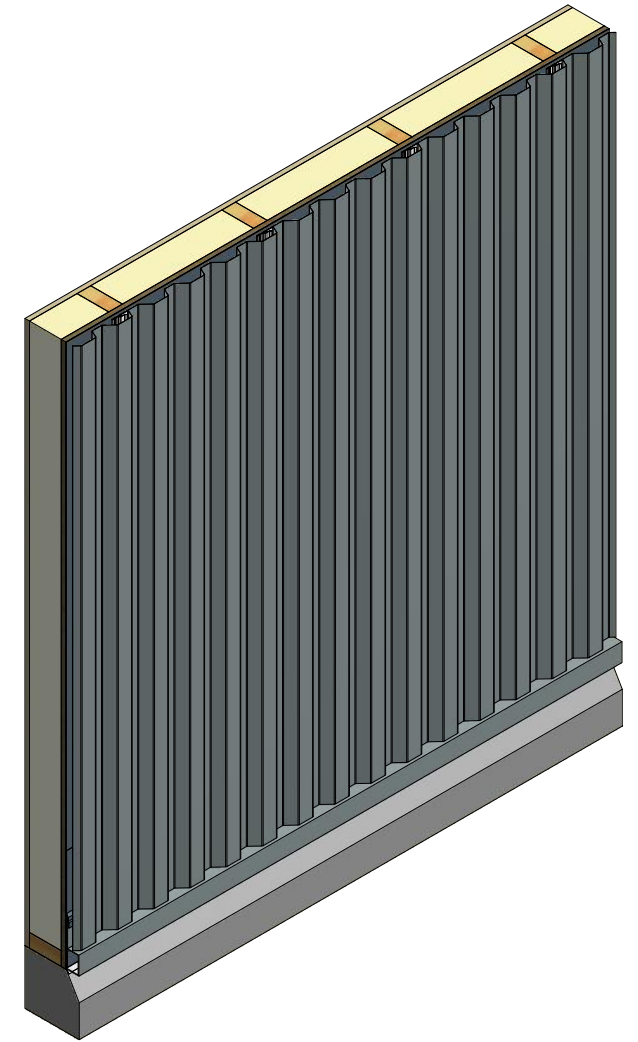
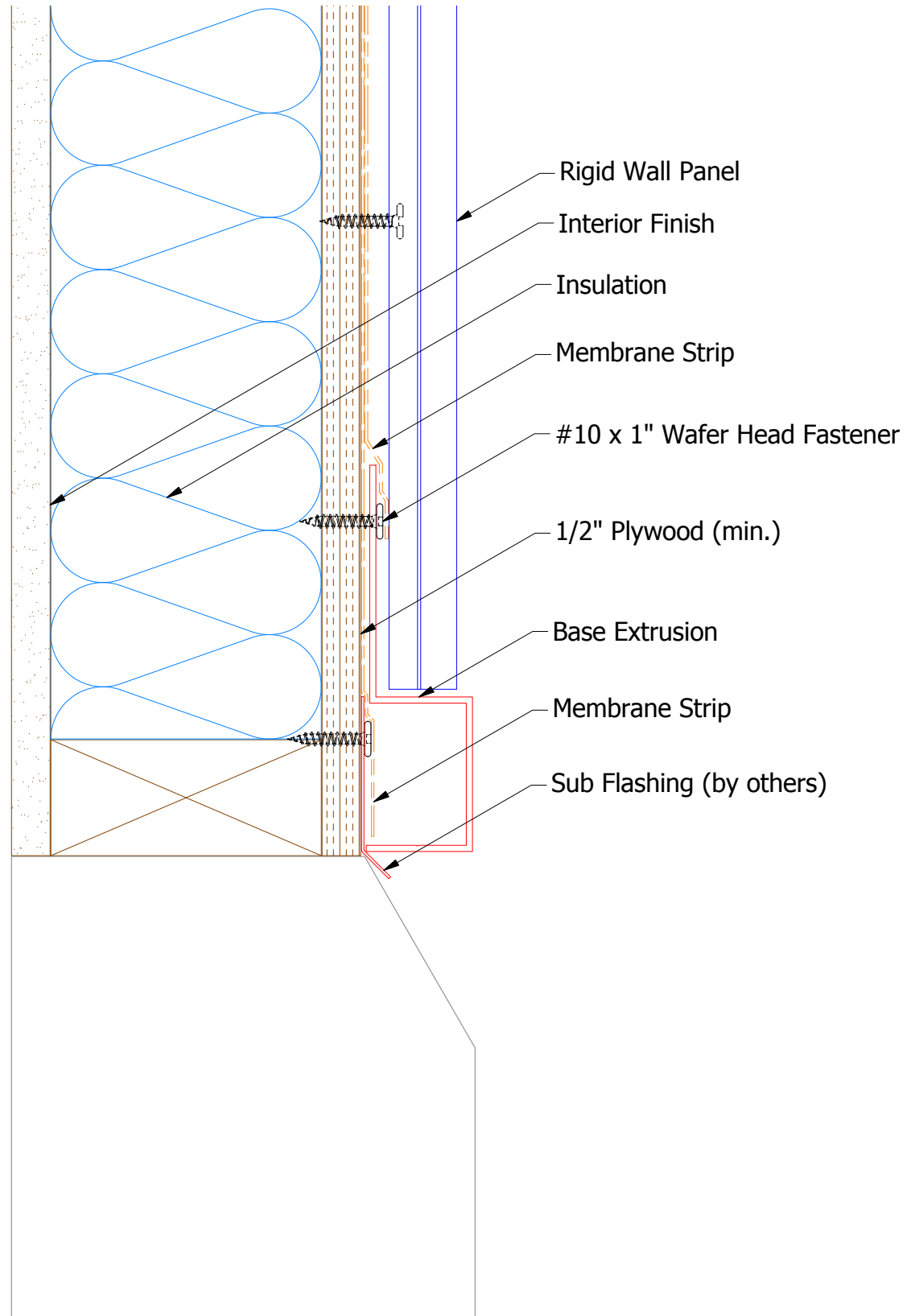


Vertical Panel



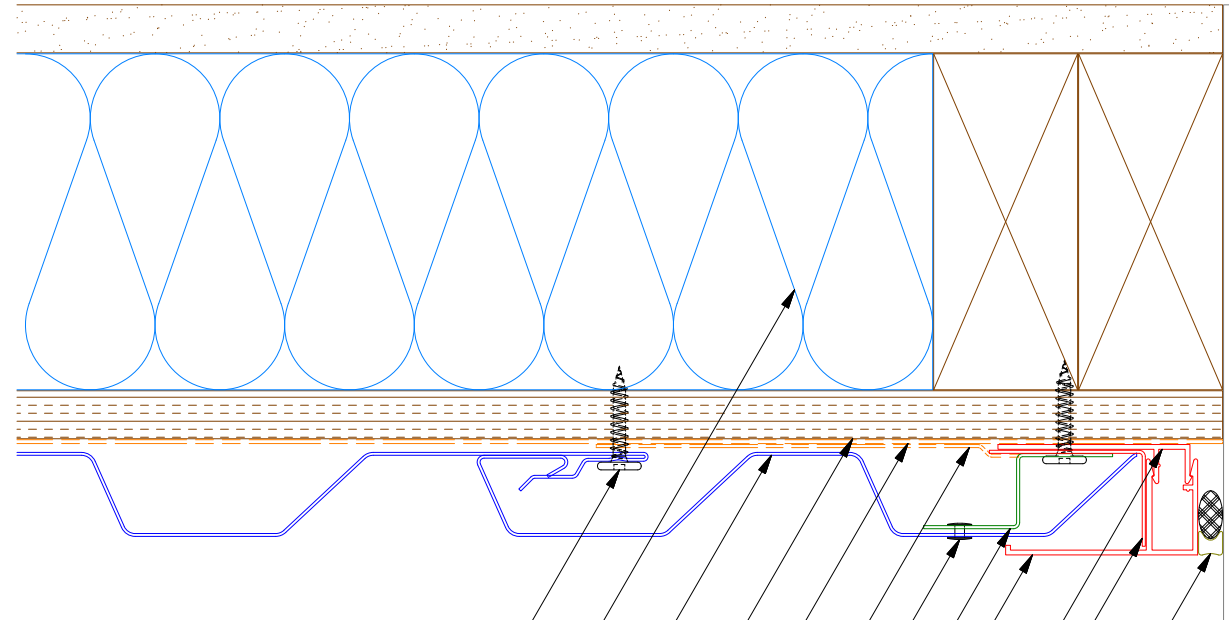
Base Extrusion


ATAS INTERNATIONAL, INC
 Allentown PA
 610-395-8445
 Mesa AZ
 480-558-7210

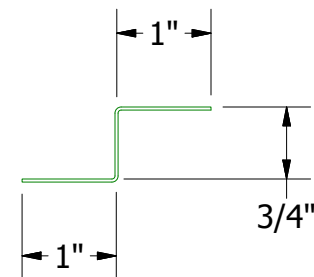
Base Extrusion Detail

REV. NO.		DATE	DESCRIPTION OF REVISION	BY	APP	TITLE	
01	3/28/2018		Updated Extrusion Name	KRK		Base Extrusion Detail	
DWG. NO.						DR	DATE
						KRK	10/31/2014
MATERIAL						APP	DATE
SH. SIZE						B	SCALE
							X:X

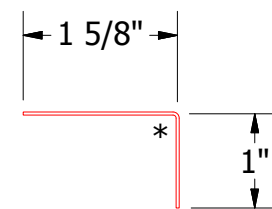
Vertical Panel



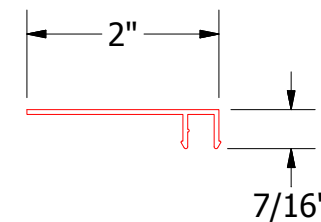
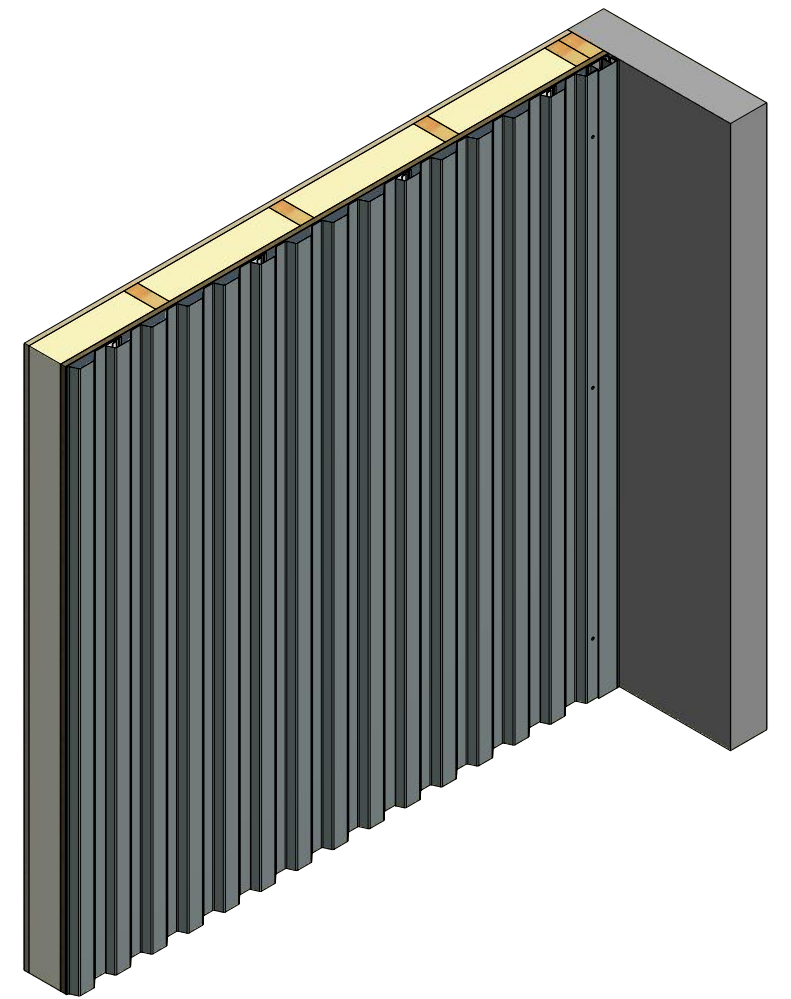
- #10 x 1" Wafer Head Fastener
- Insulation
- Rigid Wall Panel
- 1/2" Plywood (min.)
- Water and Air Resistive Barrier
- Membrane Strip
- S.S. Painted Pop Rivet
- Support Z
- Channel Cover
- Receiver for Channel Cover
- Angle Trim
- Backer Rod and Sealant



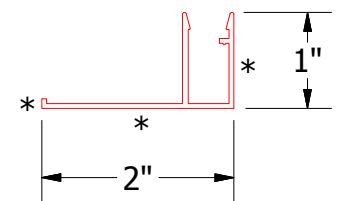
Support Z



Angle Trim



Receiver Extrusion for Channel Cover



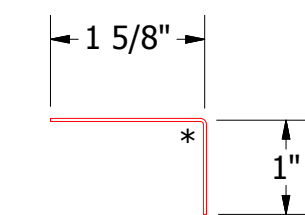
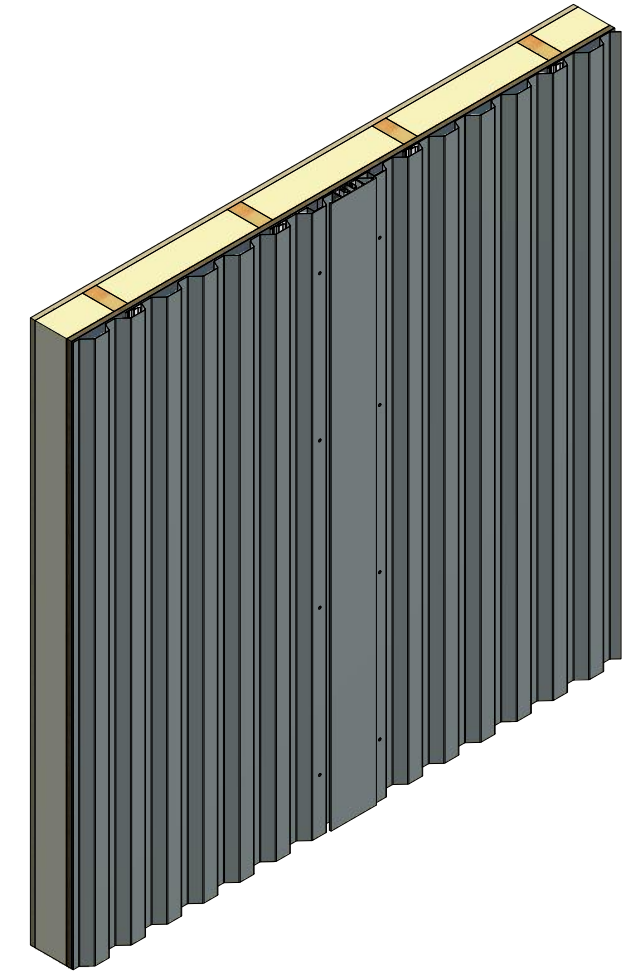
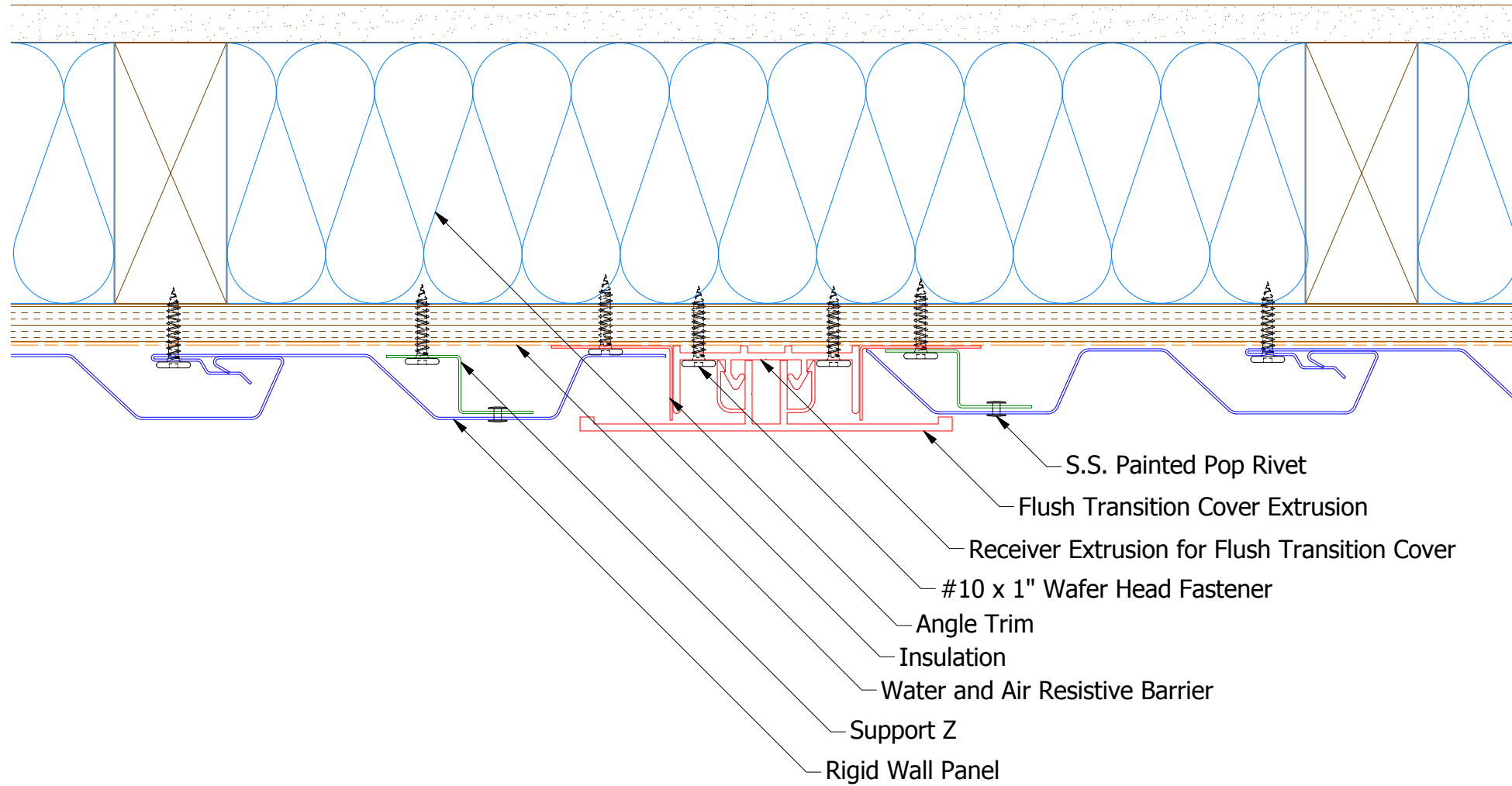
Channel Cover Extrusion

ATAS
 ATAS INTERNATIONAL, INC
 Allentown PA
 610-395-8445
 Mesa AZ
 480-558-7210

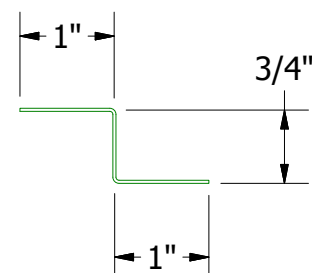
TITLE		Endwall Extrusion Detail	
DWG. NO.	DR	APP	DATE
01	KRK	APP	10/31/2014
REV. NO.	DATE	DESCRIPTION OF REVISION	SCALE
			B X:X

REV. NO.	DATE	DESCRIPTION OF REVISION	BY	APP
01	3/28/2018	Updated Extrusion Name	KRK	

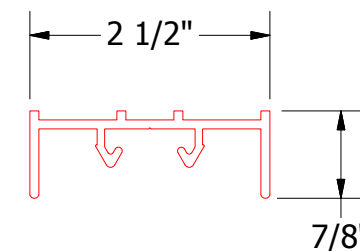
Vertical Panel



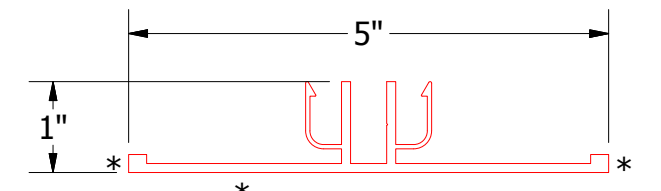
Angle Trim



Support Z



Receiver Extrusion for Flush Transition Cover



Flush Transition Cover Extrusion

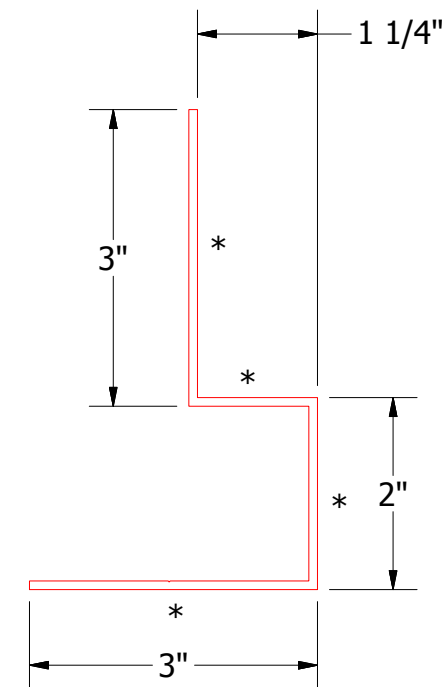
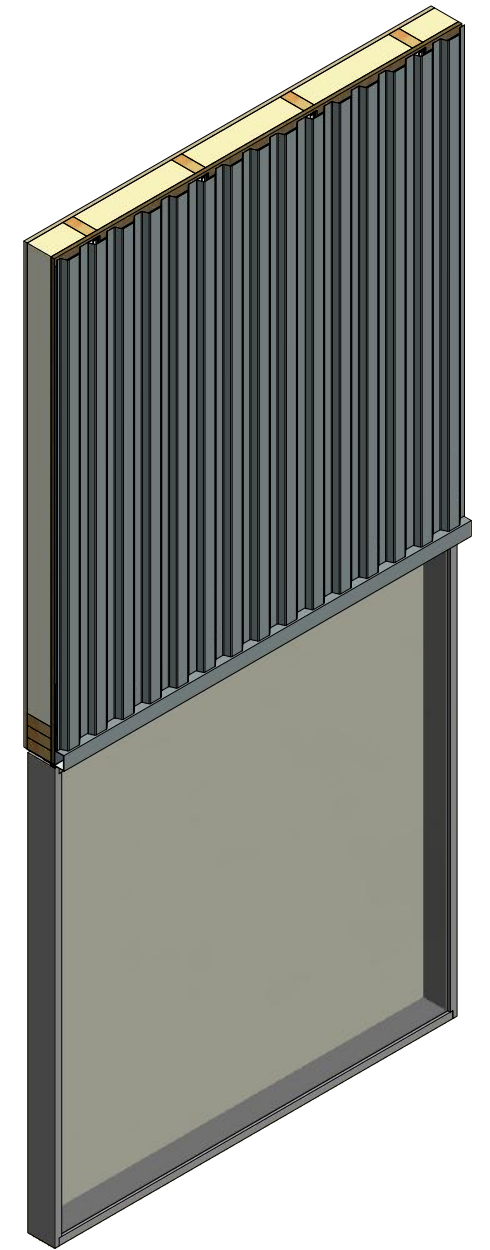
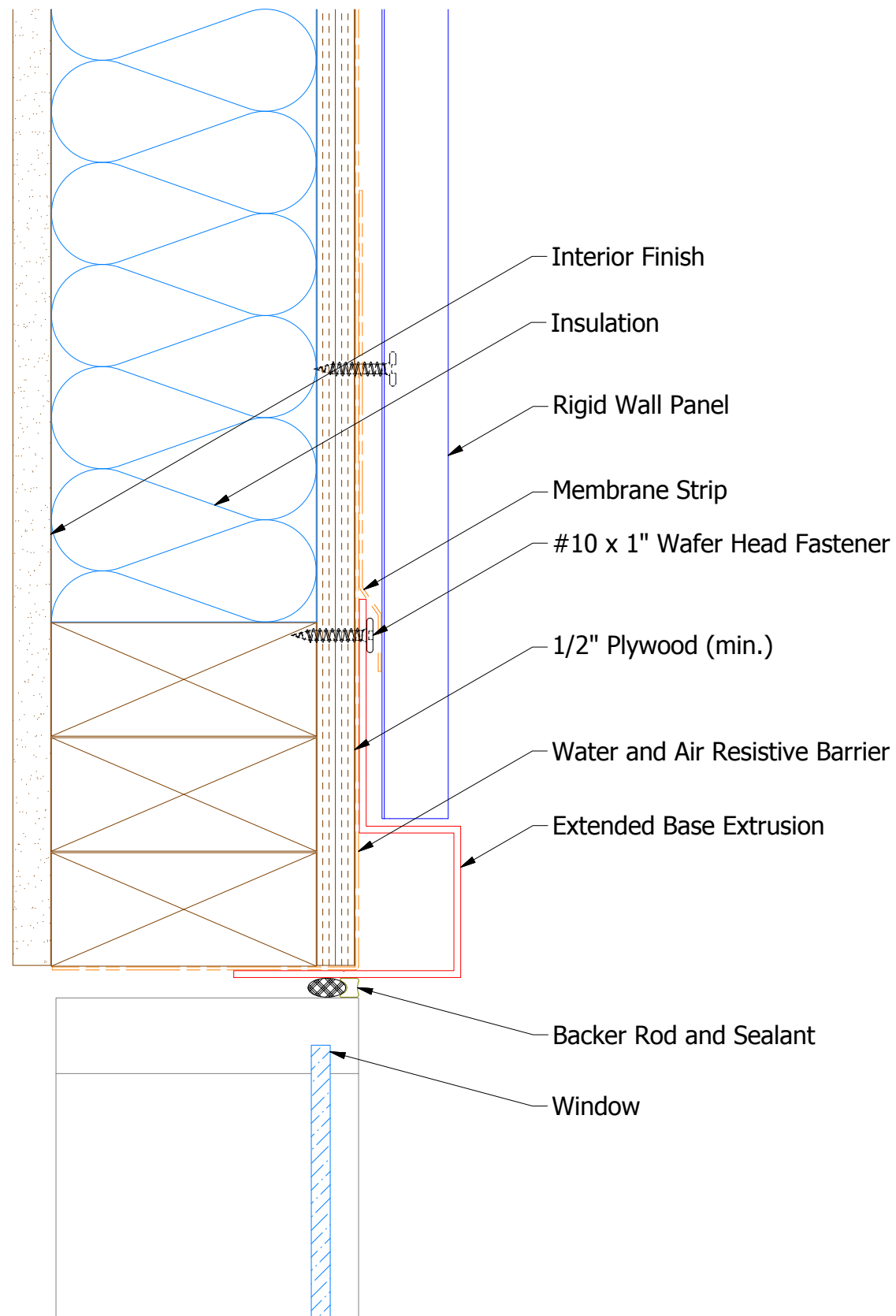


ATAS INTERNATIONAL, INC
 Allentown PA
 610-395-8445
 Mesa AZ
 480-558-7210

TITLE Flush Transition Extrusion Detail

01	03/28/2018	Updated Extrusion Name	KRK	DR	KRK	DATE	10/31/2014
REV. NO.	DATE	DESCRIPTION OF REVISION	BY	APP	MATERIAL	SH. SIZE	SCALE
						B	X:X

Vertical Panel

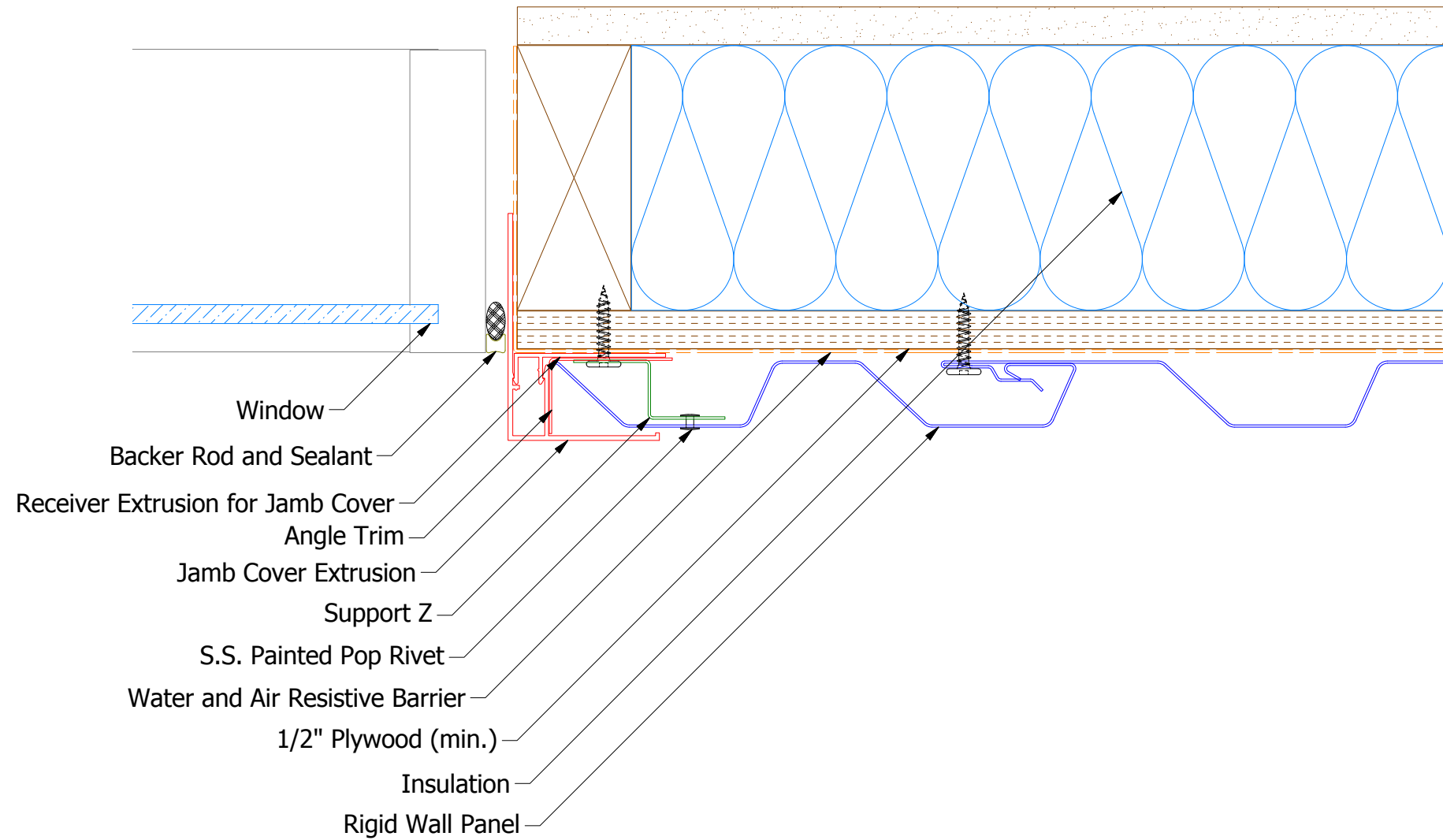
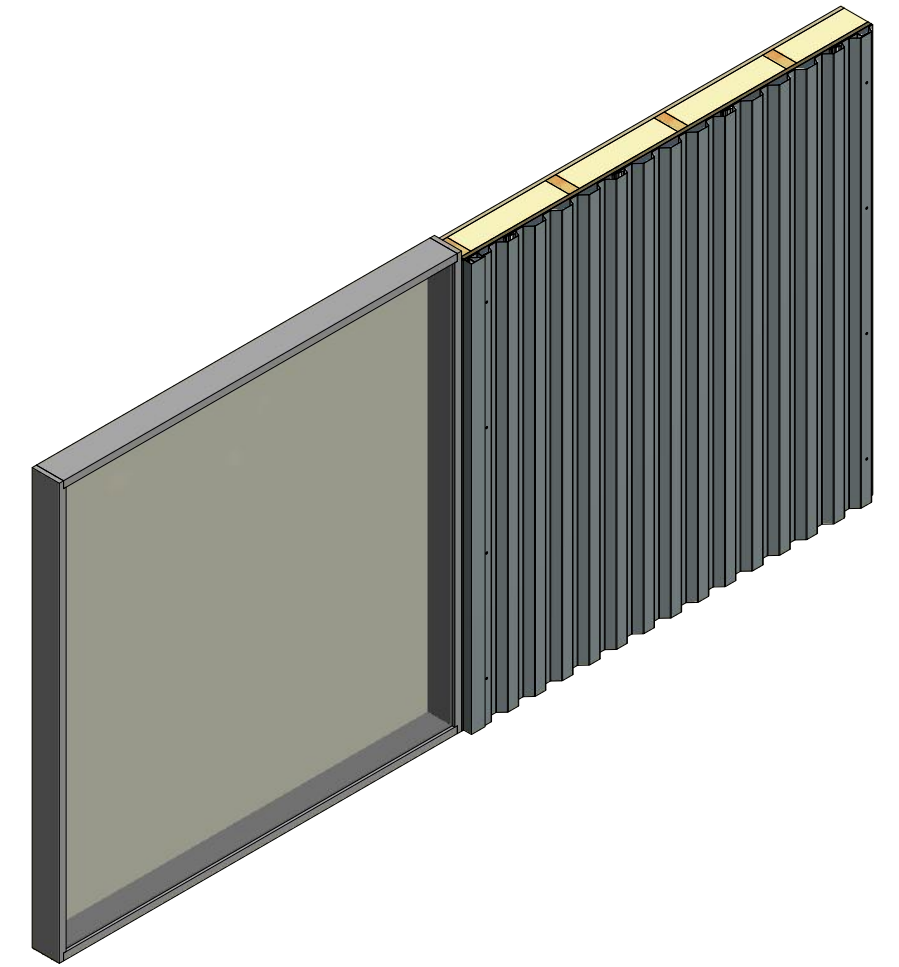


Extended Base Extrusion

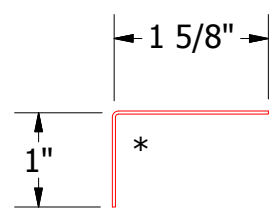

ATAS INTERNATIONAL, INC
 Allentown PA
 610-395-8445
 Mesa AZ
 480-558-7210

TITLE		Head Extrusion Detail	
DWG. NO.	DR	DATE	
	KRK	10/31/2014	
REV. NO.	DATE	DESCRIPTION OF REVISION	BY
01	3/28/2018	Updated Extrusion Name	KRK
			APP
			SH. SIZE
			B
			SCALE
			X:X

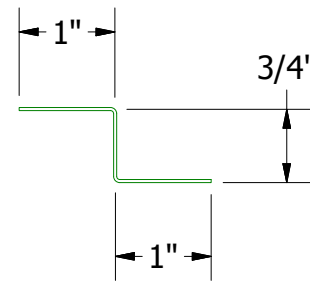
Vertical Panel



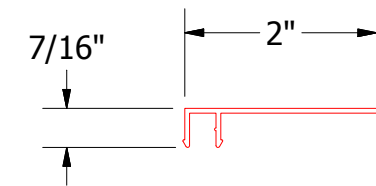
- Window
- Backer Rod and Sealant
- Receiver Extrusion for Jamb Cover
- Angle Trim
- Jamb Cover Extrusion
- Support Z
- S.S. Painted Pop Rivet
- Water and Air Resistive Barrier
- 1/2" Plywood (min.)
- Insulation
- Rigid Wall Panel



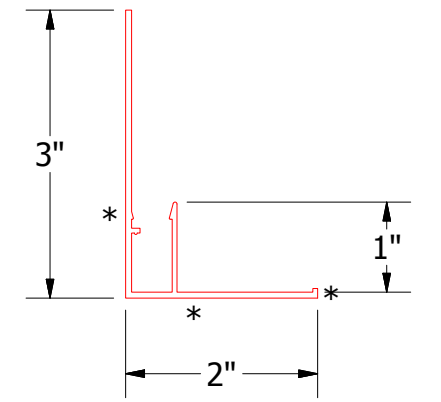
Angle Trim



Support Z



Receiver Extrusion for Jamb Cover

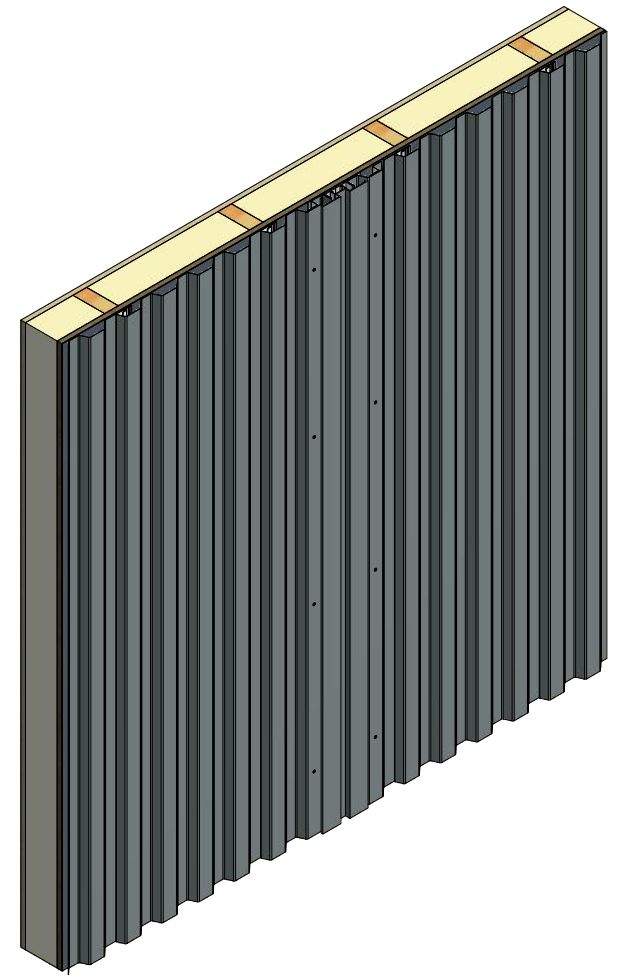
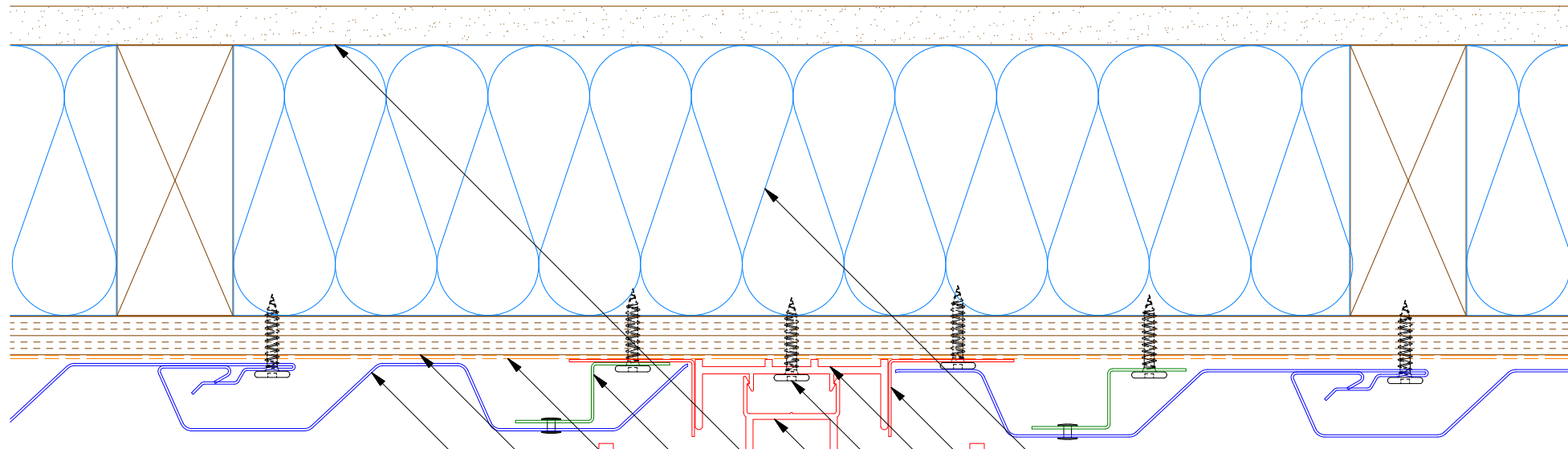


Jamb Cover Extrusion

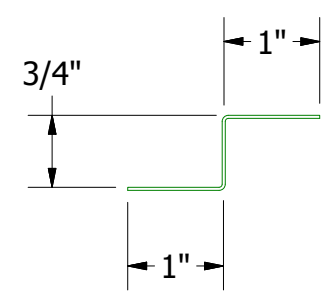
ATAS ATAS INTERNATIONAL, INC
 Allentown PA
 610-395-8445
 Mesa AZ
 480-558-7210

TITLE				Jamb Extrusion Detail	
DWG. NO.		DR	KRK	DATE	11/3/2014
REV. NO.	01	DATE	3/28/2018	APP	
		DESCRIPTION OF REVISION	Updated Extrusion Name	BY	KRK
				SH. SIZE	B
				SCALE	X:X

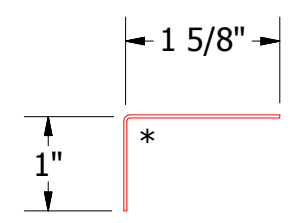
Vertical Panel



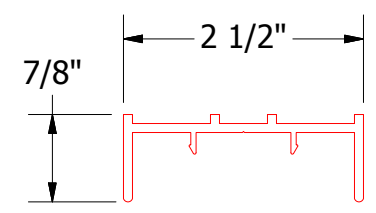
- Insulation
- Angle Trim
- Receiver Extrusion for Reveal Cover
- #10 x 1" Wafer Head Fastener
- Transition Cover Extrusion with Reveal
- Interior Finish
- Support Z
- Water and Air Resistive Barrier
- 1/2" Plywood (min.)
- Rigid Wall Panel



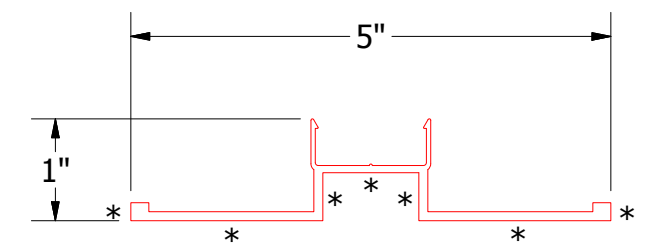
Support Z



Angle Trim



Receiver Extrusion for Reveal Cover



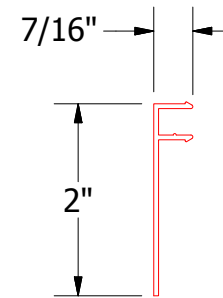
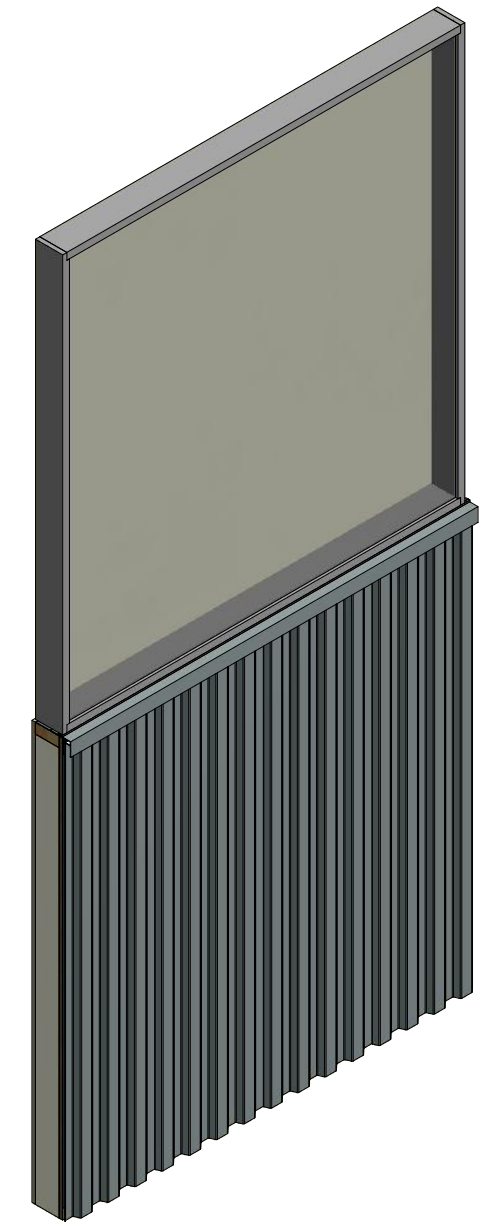
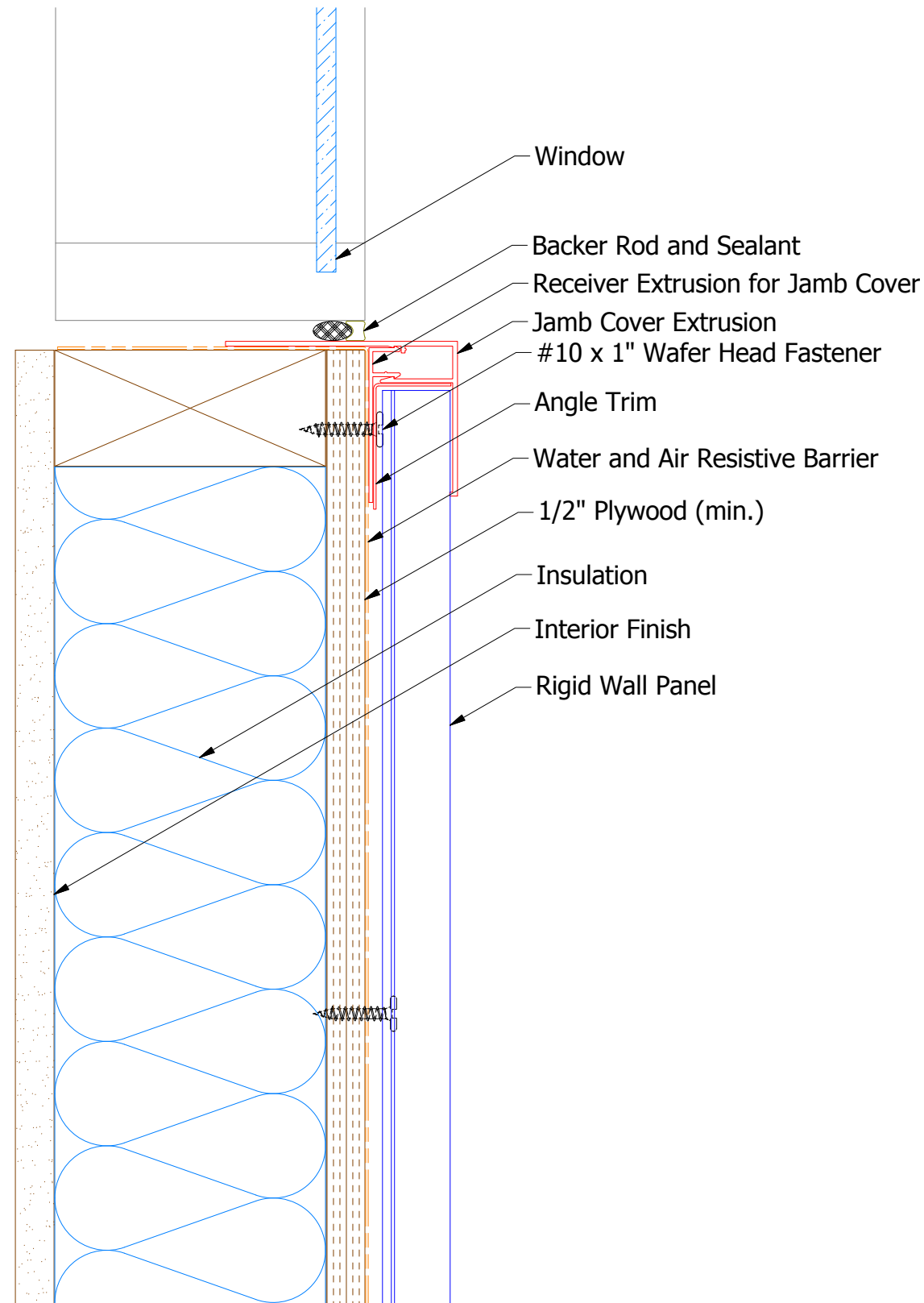
Transition Cover Extrusion with Reveal

ATAS ATAS INTERNATIONAL, INC
 Allentown PA
 610-395-8445
 Mesa AZ
 480-558-7210

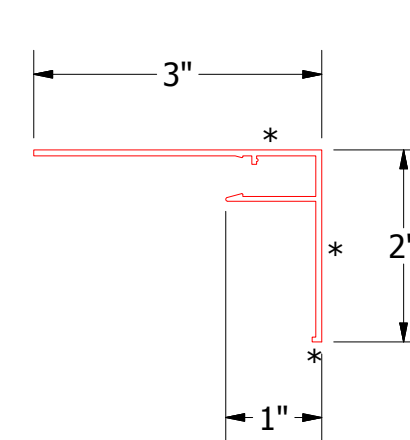
TITLE **Reveal Transition Extrusion Detail**

01	3/28/2018	Updated Extrusion Name	KRK	DR	KRK	DATE	11/4/2014
REV. NO.	DATE	DESCRIPTION OF REVISION	BY	APP	MATERIAL	SH. SIZE	SCALE
						B	X:X

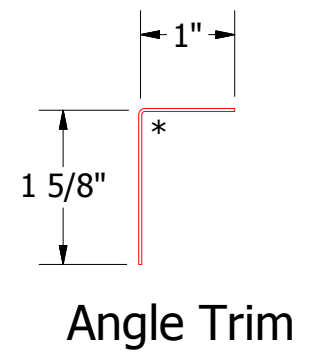
Vertical Panel



Receiver Extrusion for Jamb Cover



Jamb Cover Extrusion



ATAS ATAS INTERNATIONAL, INC
 Allentown PA
 610-395-8445
 Mesa AZ
 480-558-7210

TITLE **Window Sill Extruded Detail**

DWG. NO.	DR	DATE
01	KRK	4/22/2015
REV. NO.	APP	DATE
01	APP	
DESCRIPTION OF REVISION	SH. SIZE	SCALE
Updated Extrusion Name	B	X:X