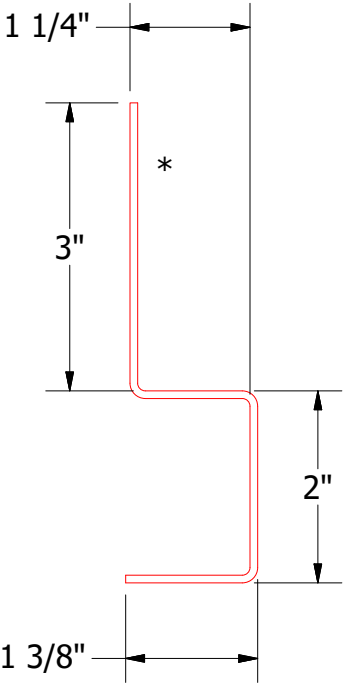
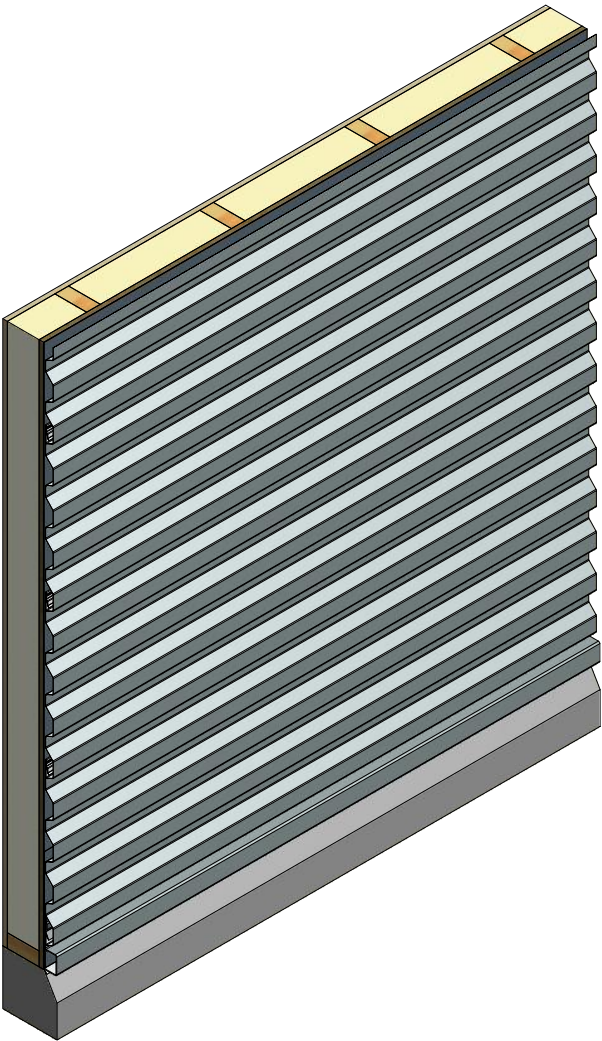
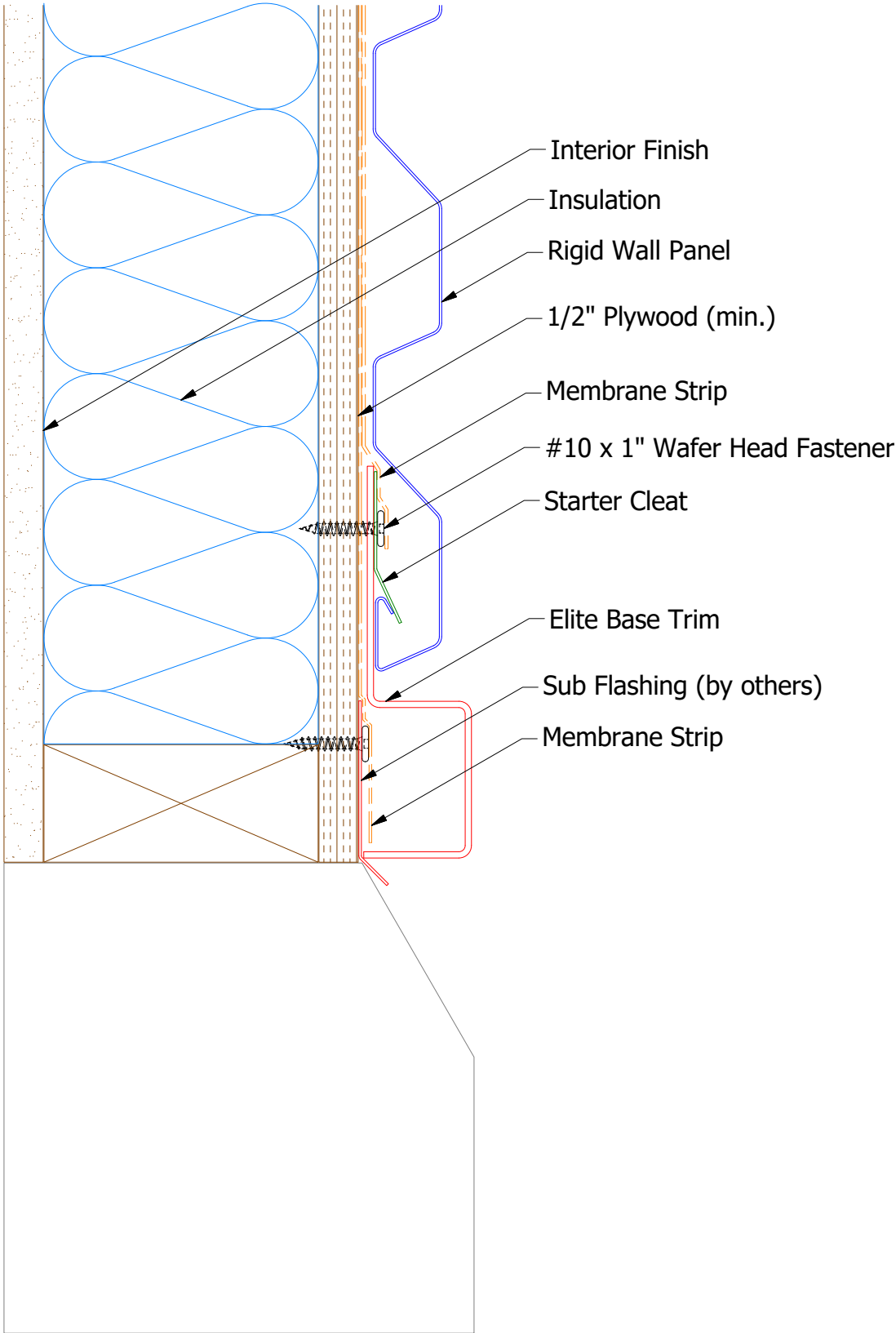
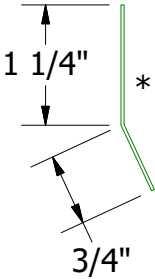


Horizontal Panel



Elite Base Trim



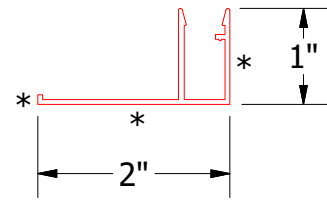
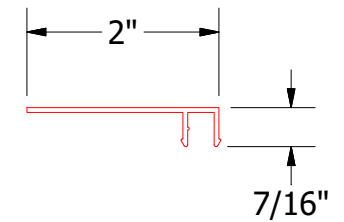
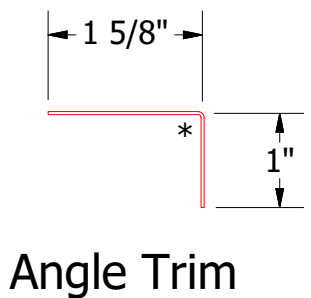
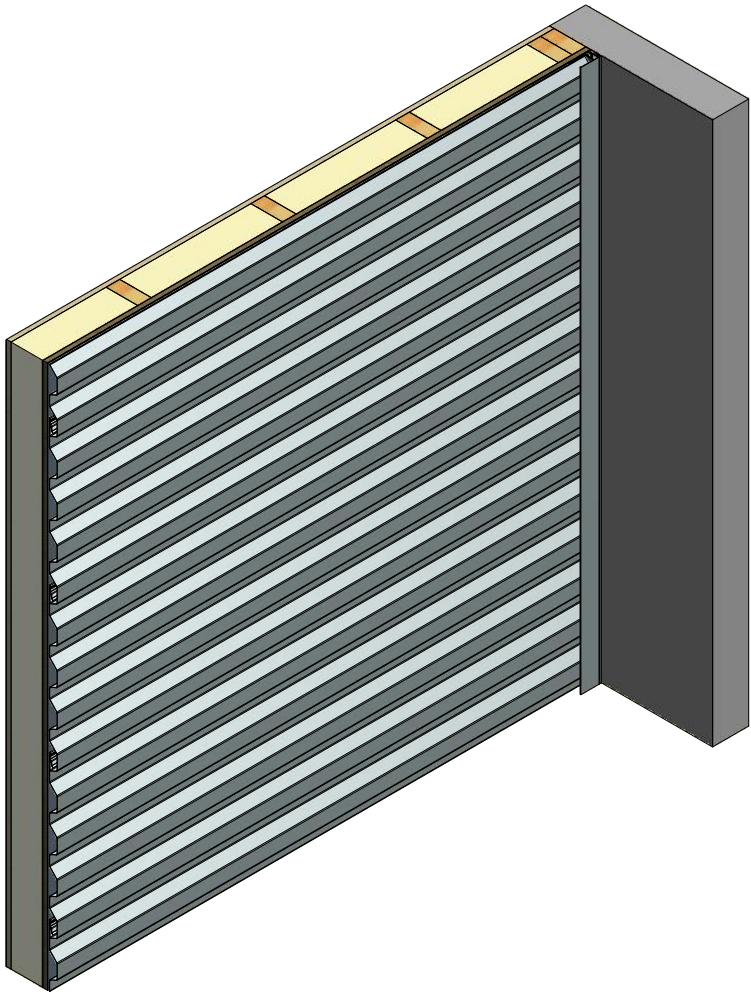
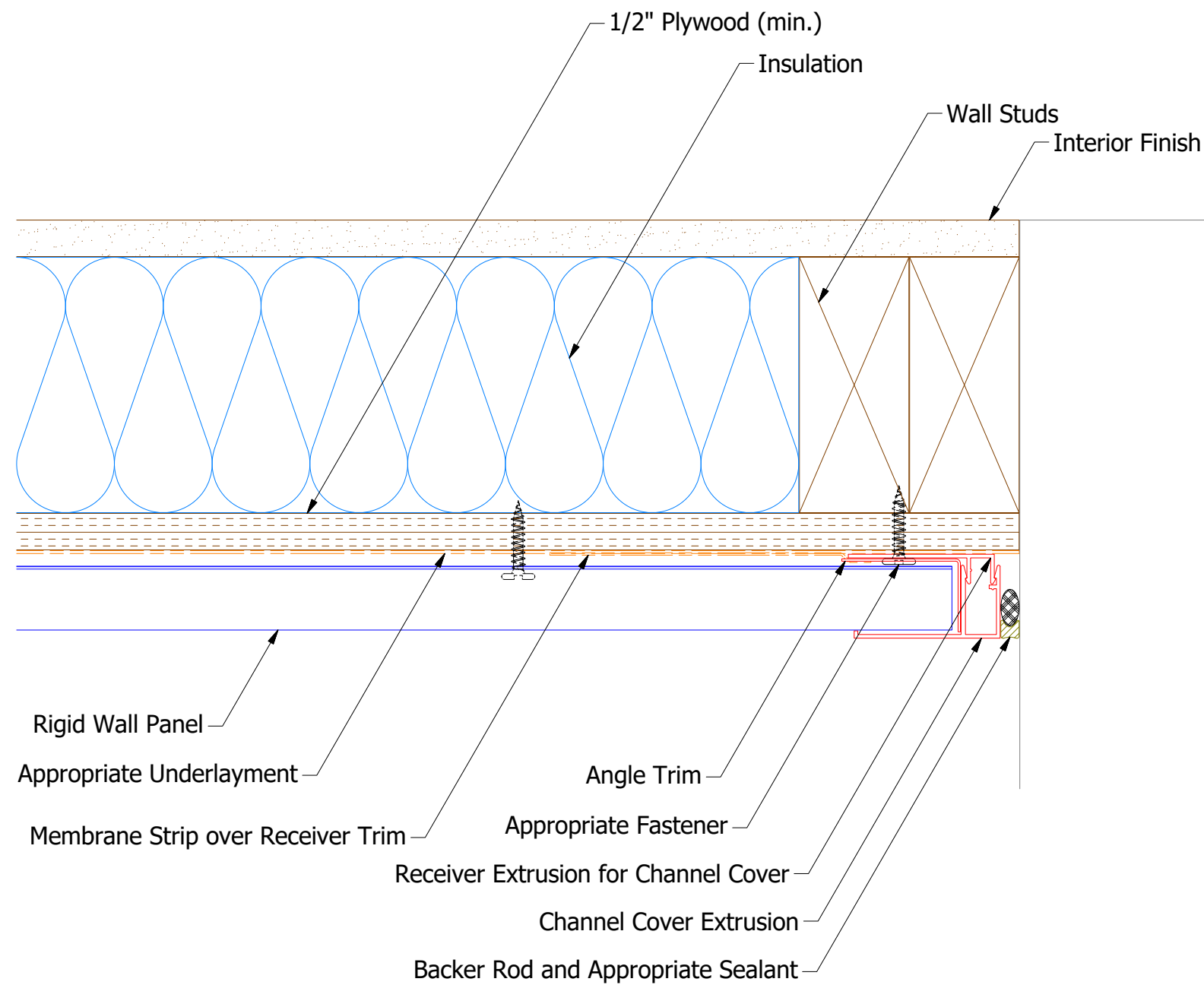
Starter Cleat

Note: \* denotes painted side

						TITLE	
						Rigid Wall Elite Base Detail	
				DWG. NO.		DR	DATE
						KRK	10/31/2014
				MATERIAL		APP	DATE
						SH. SIZE	SCALE
						B	X:X

ATAS  
ATAS INTERNATIONAL, INC  
Allentown PA  
610-395-8445  
Mesa AZ  
480-558-7210

Horizontal Panel



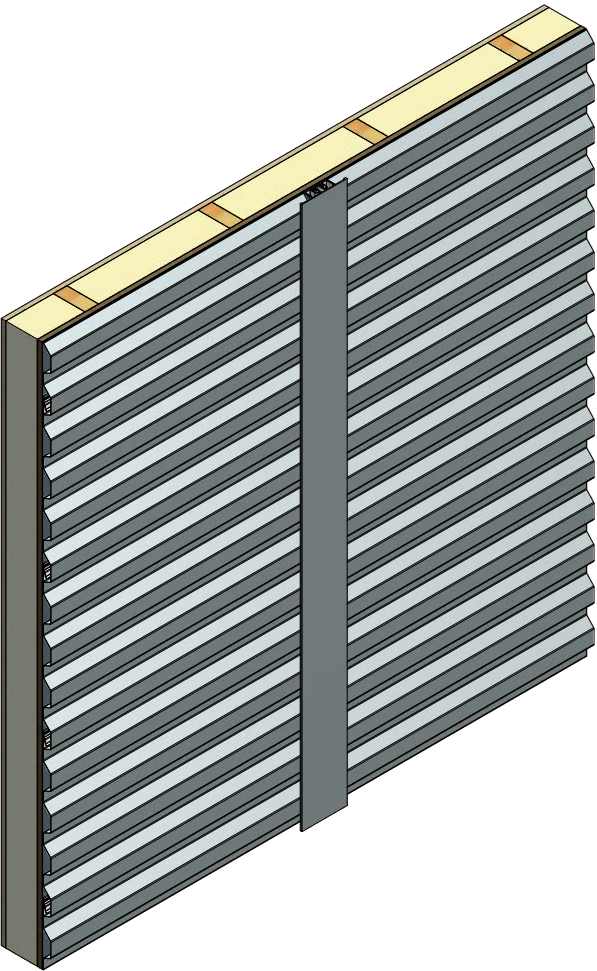
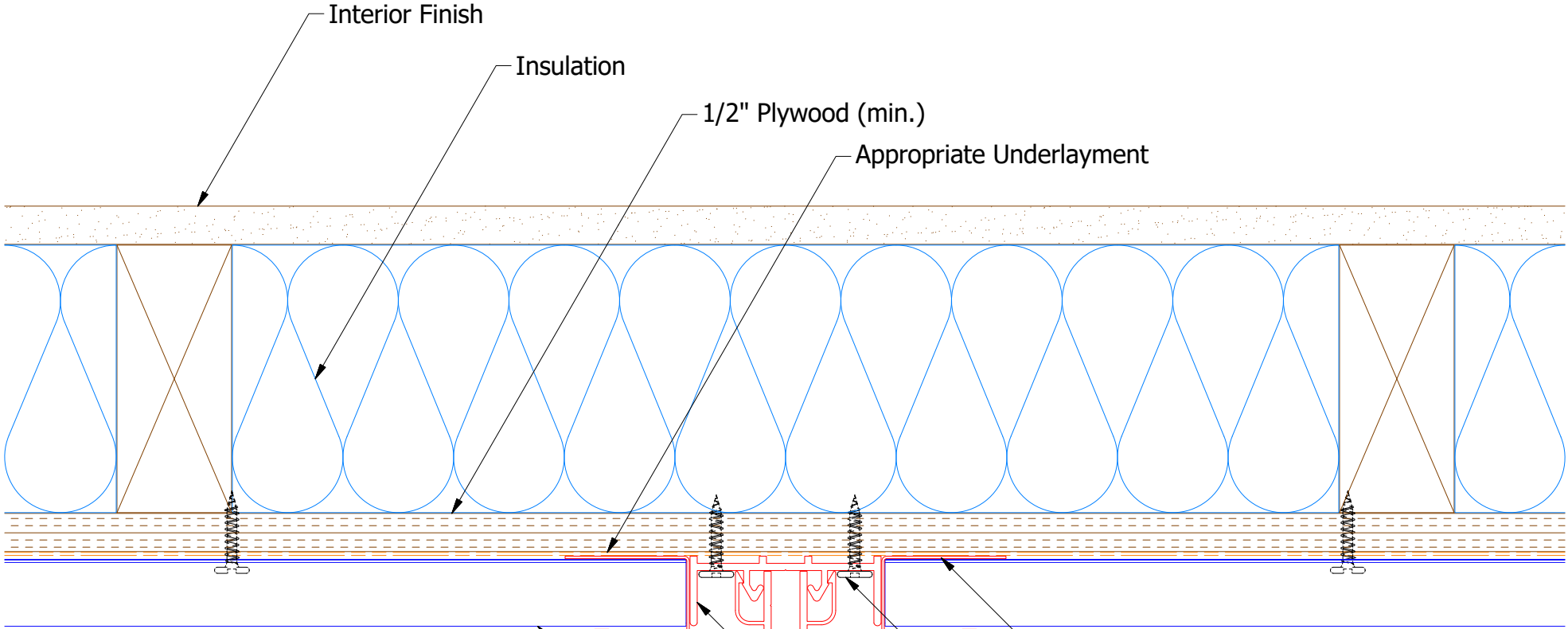
Note: \* denotes painted side

Receiver Extrusion for Channel Cover

Channel Cover Extrusion

TITLE				Endwall Extrusion Detail			
02	9/23/2021	Removed Notched Neoprene and added new trim	JJP	DWG. NO.	DR	KRK	DATE 10/31/2014
01	3/28/2018	Updated Extrusion Name	KRK	MATERIAL	APP		DATE
REV. NO.	DATE	DESCRIPTION OF REVISION	BY	APP	SH. SIZE	B	SCALE X:X

Horizontal Panel



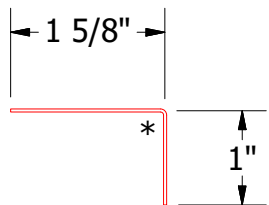
Angle Trim

Applicable Fastener

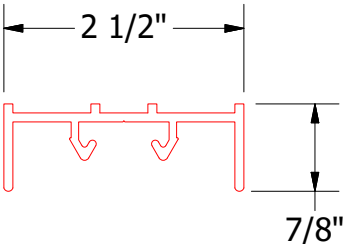
Receiver Extrusion for Flush Transition Cover

Flush Transition Cover Extrusion

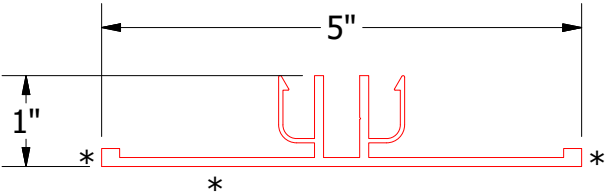
Rigid Wall Panel



Angle Trim



Receiver Extrusion for Flush Transition Cover

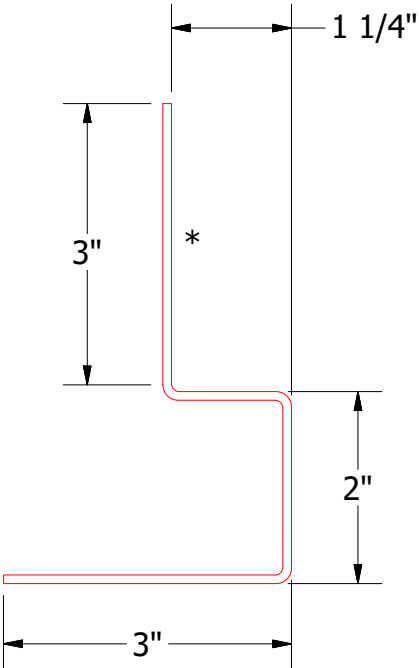
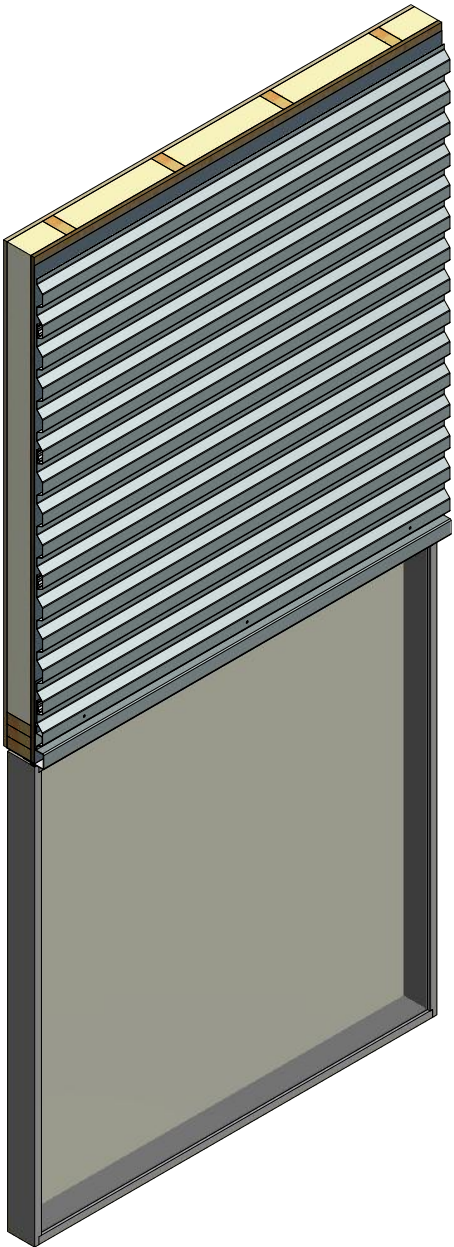
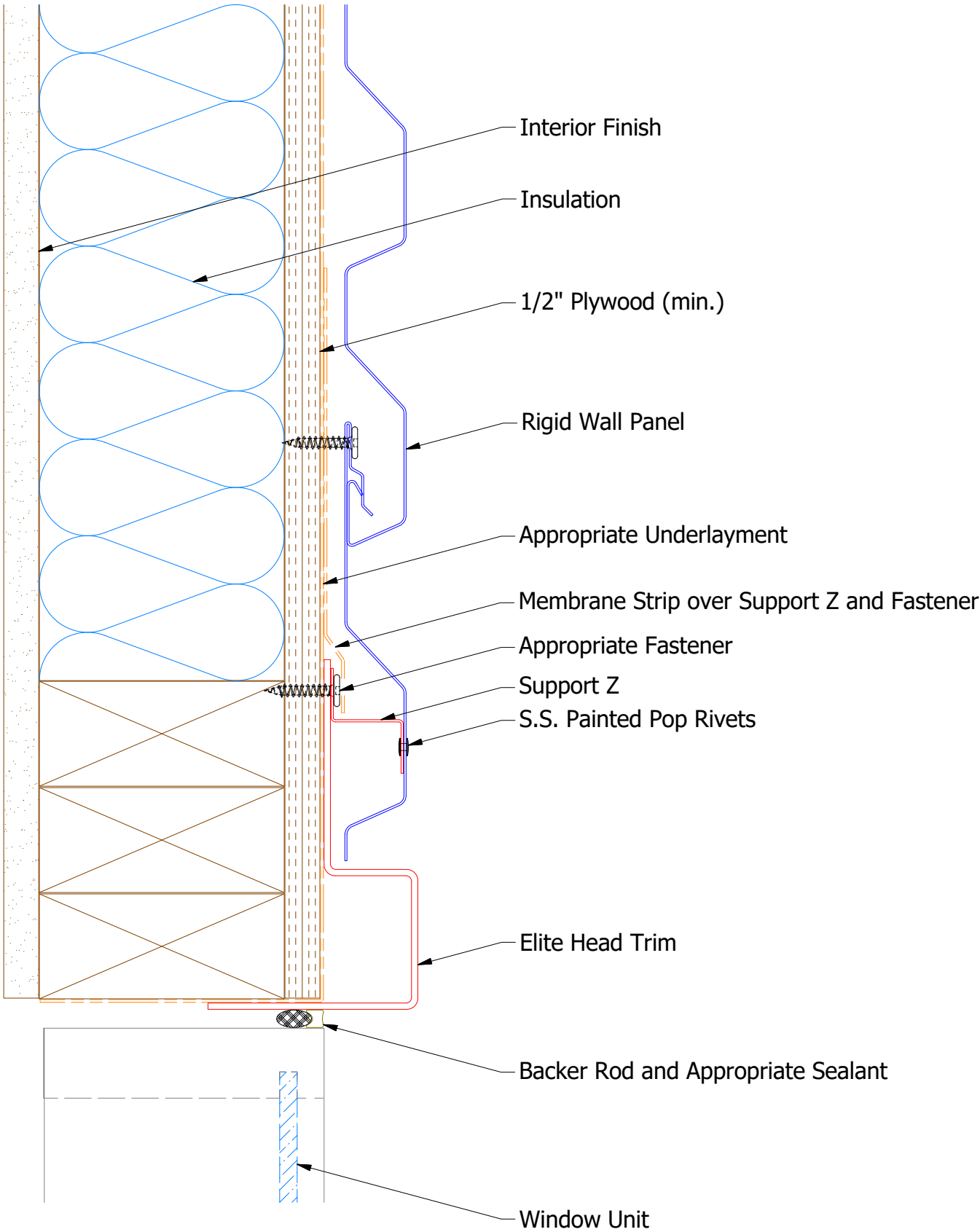


Flush Transition Cover Extrusion

Note: \* denotes painted side

TITLE				Flush Transition Extrusion Detail			
02	9/23/2021	Removed Notched Neoprene and added new trim	JJP	DWG. NO.	DR	KRK	DATE 10/31/2014
01	03/28/2018	Updated Extrusion Name	KRK	MATERIAL	APP		DATE
REV. NO.	DATE	DESCRIPTION OF REVISION	BY	APP	SH. SIZE	B	SCALE X:X

Horizontal Panel



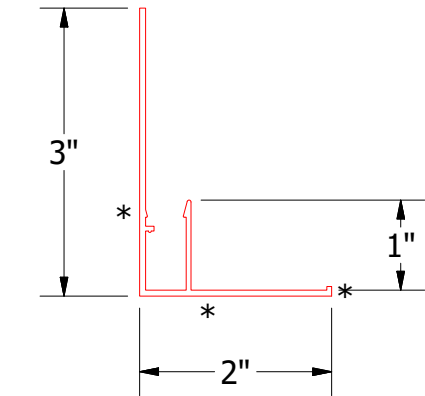
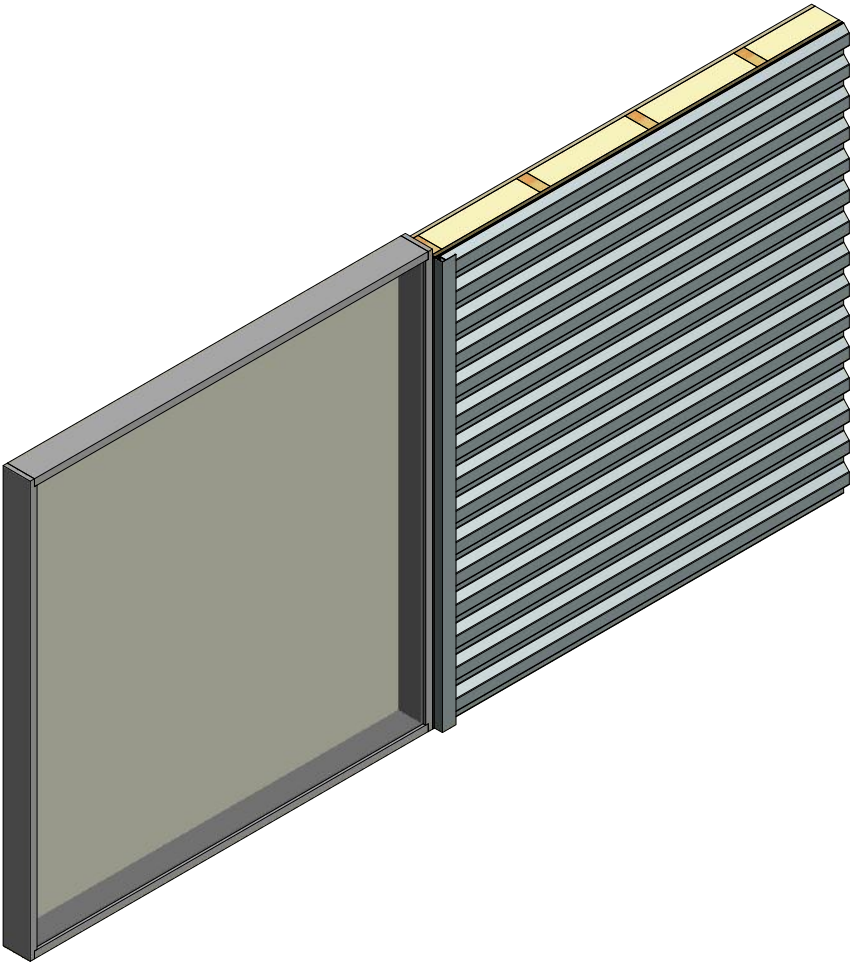
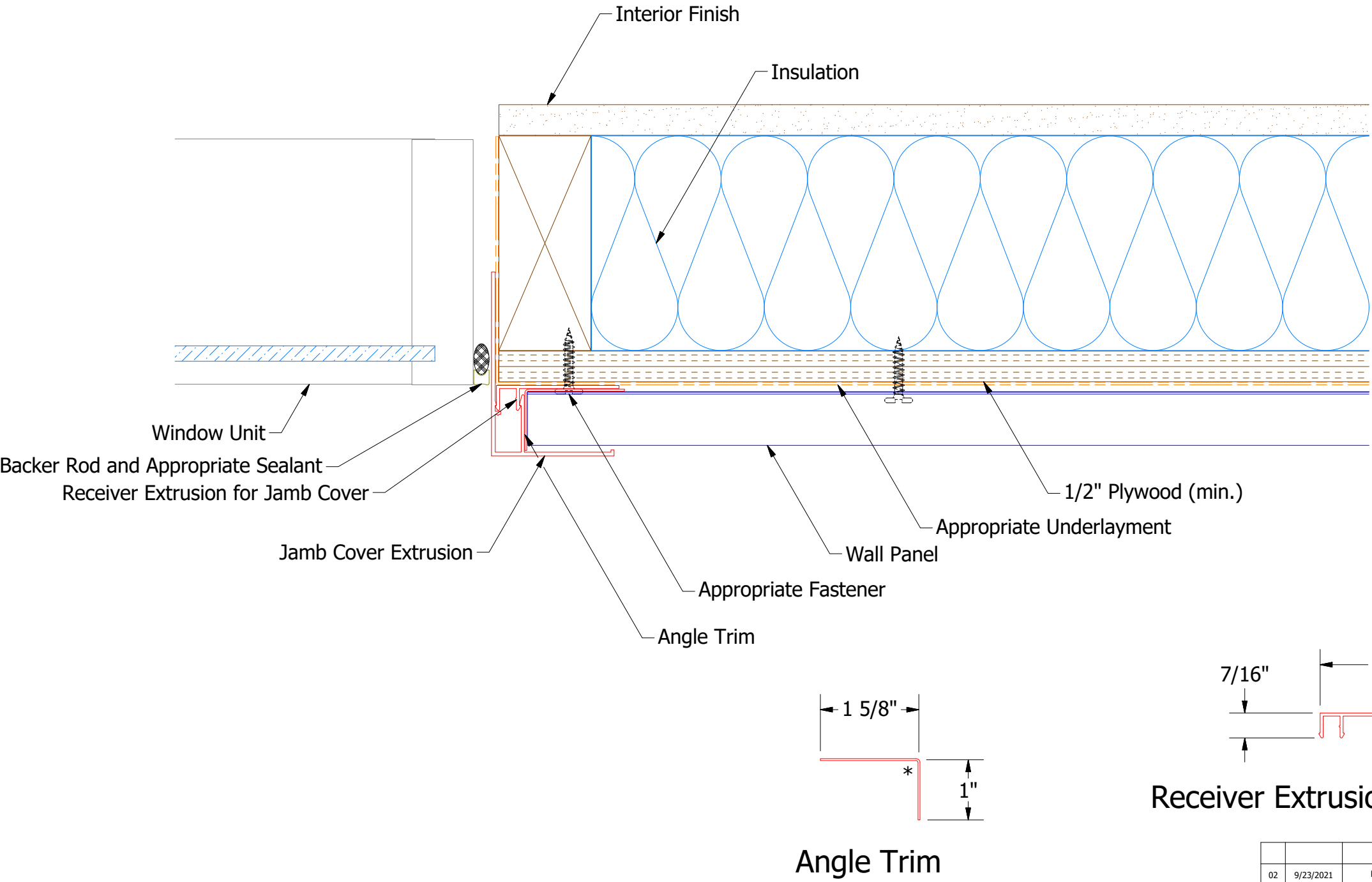
Elite Head Trim

Note: \* denotes painted side

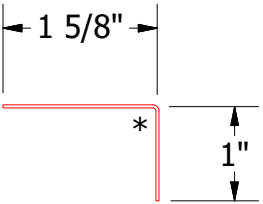
				<div><div><div>ATAS</div><div>ATAS INTERNATIONAL, INC</div><div>Allentown PA</div><div>610-395-8445</div><div>Mesa AZ</div><div>480-558-7210</div></div></div>			
				TITLE Rigid Wall Elite Head Detail			
				DWG. NO.		DR KRK	DATE 10/31/2014
						APP	DATE
				MATERIAL		SH. SIZE B	SCALE X:X
01	3/28/2018	Updated Extrusion Name	KRK				
REV. NO.	DATE	DESCRIPTION OF REVISION	BY APP				



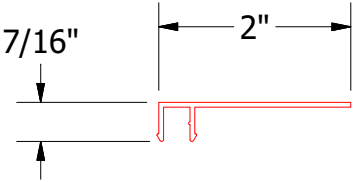
Horizontal Panel




Jamb Cover Extrusion



Angle Trim

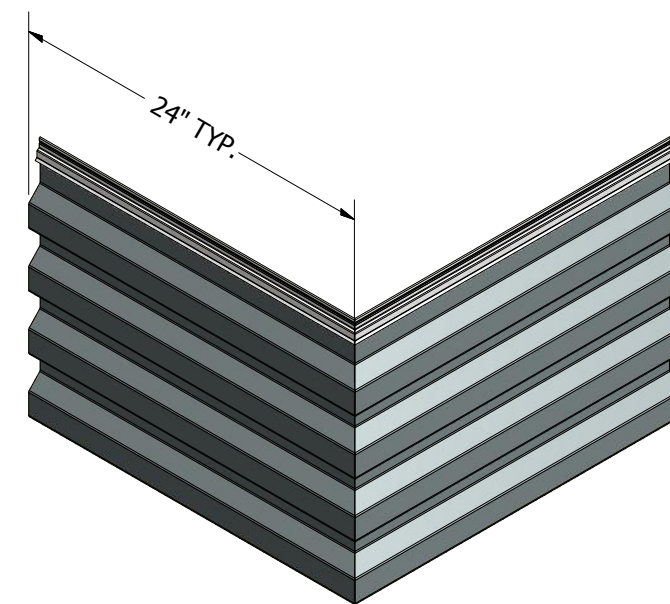
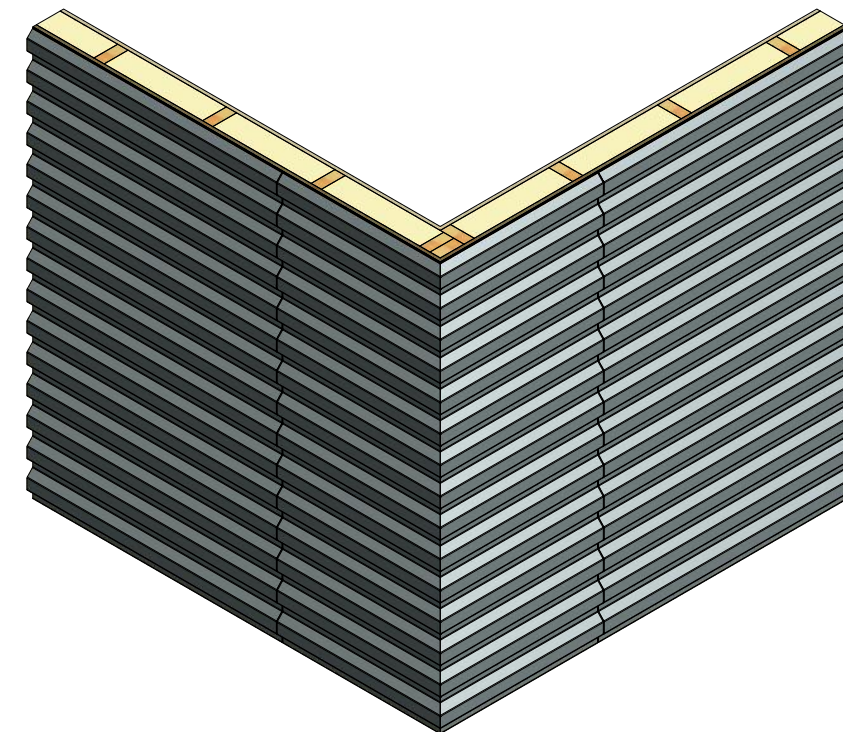
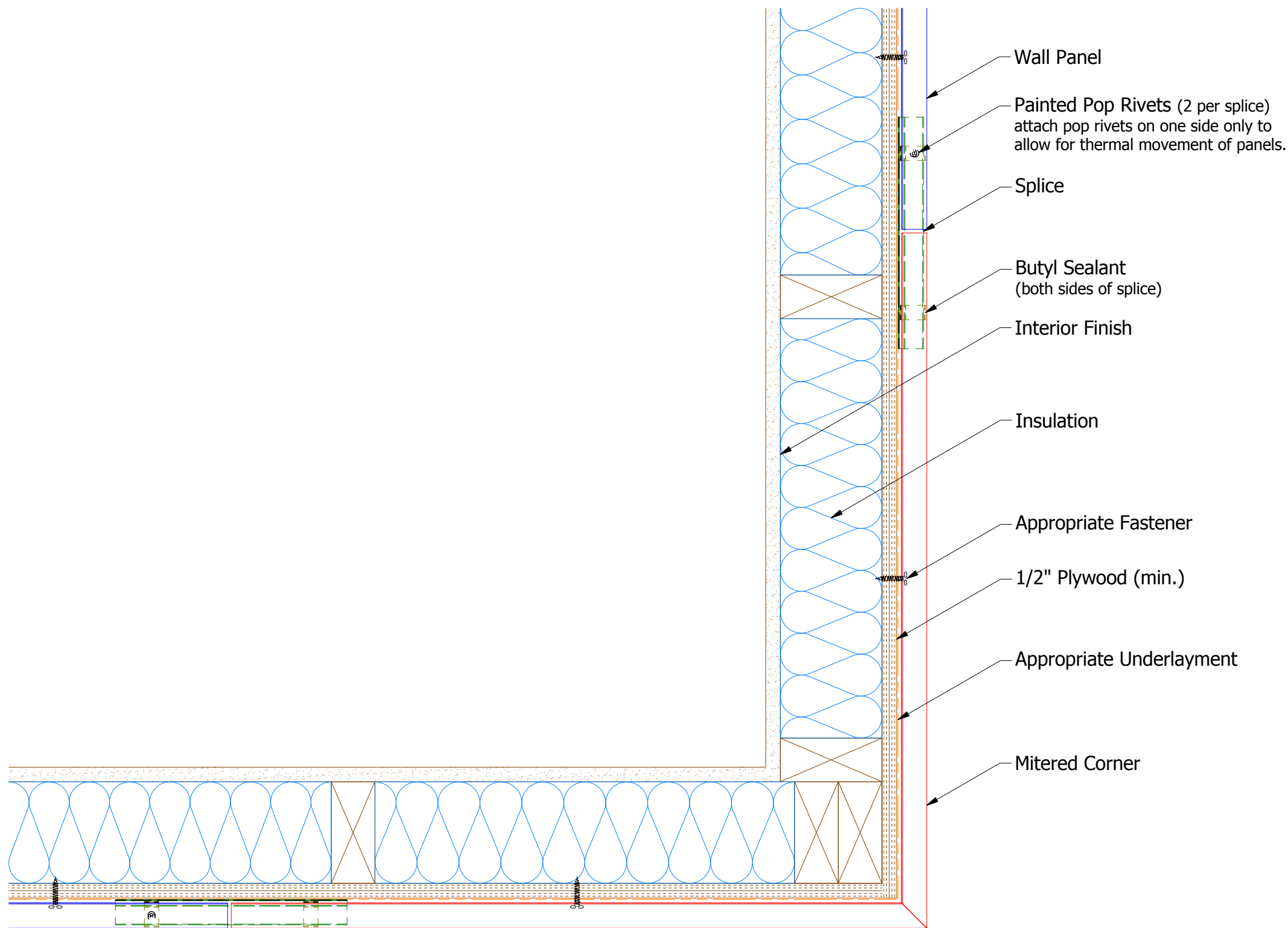


Receiver Extrusion for Jamb Cover

		ATAS INTERNATIONAL, INC Allentown PA 610-395-8445 Mesa AZ 480-558-7210	
TITLE Jamb Extrusion Detail			
DWG. NO.		DR KRK	DATE 11/3/2014
MATERIAL		APP	DATE
		SH. SIZE B	SCALE X:X

Note: \* denotes painted side

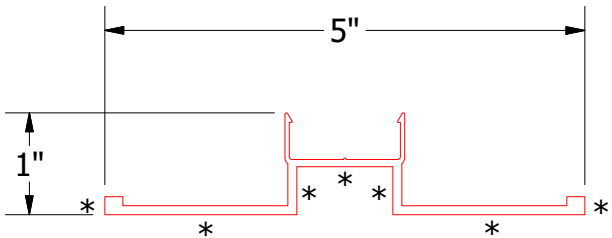
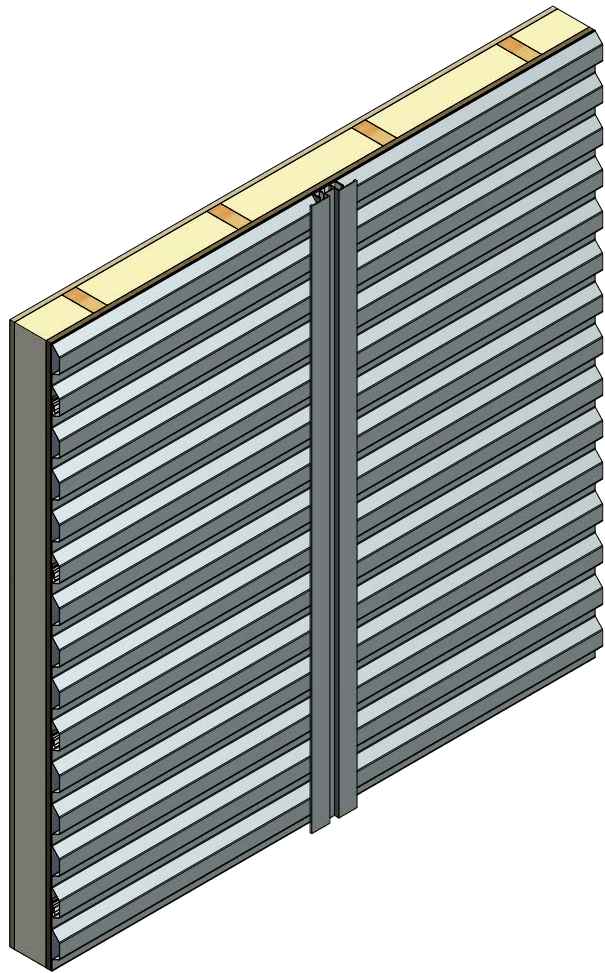
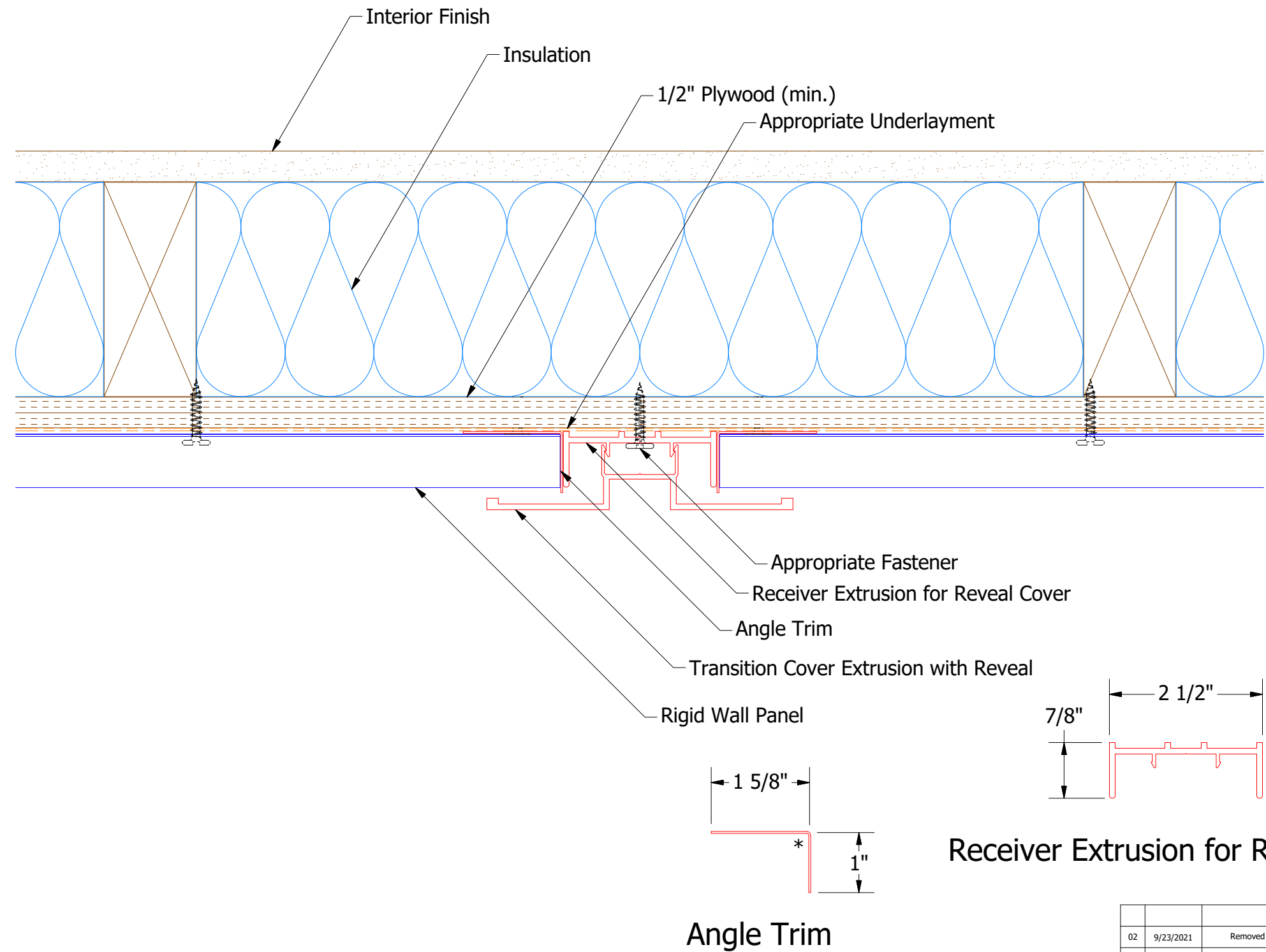
02	9/23/2021	Removed Notched Neoprene and added new trim	JJP
01	3/28/2018	Updated Extrusion Name	KRK
REV. NO.	DATE	DESCRIPTION OF REVISION	BY



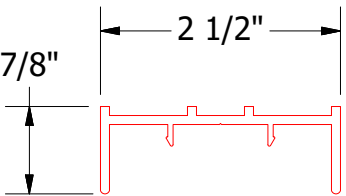
Mitered Corner N.T.S.  
(Inside Mitered Corner Available)

					TITLE				
					Elite Mitered Corner Detail				
					DWG. NO.			DR	DATE
								KRK	10/31/2014
					MATERIAL			APP	DATE
REV. NO.	DATE	DESCRIPTION OF REVISION			BY	APP	SH. SIZE	B	SCALE
								X:X	

Horizontal Panel



Transition Cover Extrusion with Reveal



Receiver Extrusion for Reveal Cover

Angle Trim

Note: \* denotes painted side

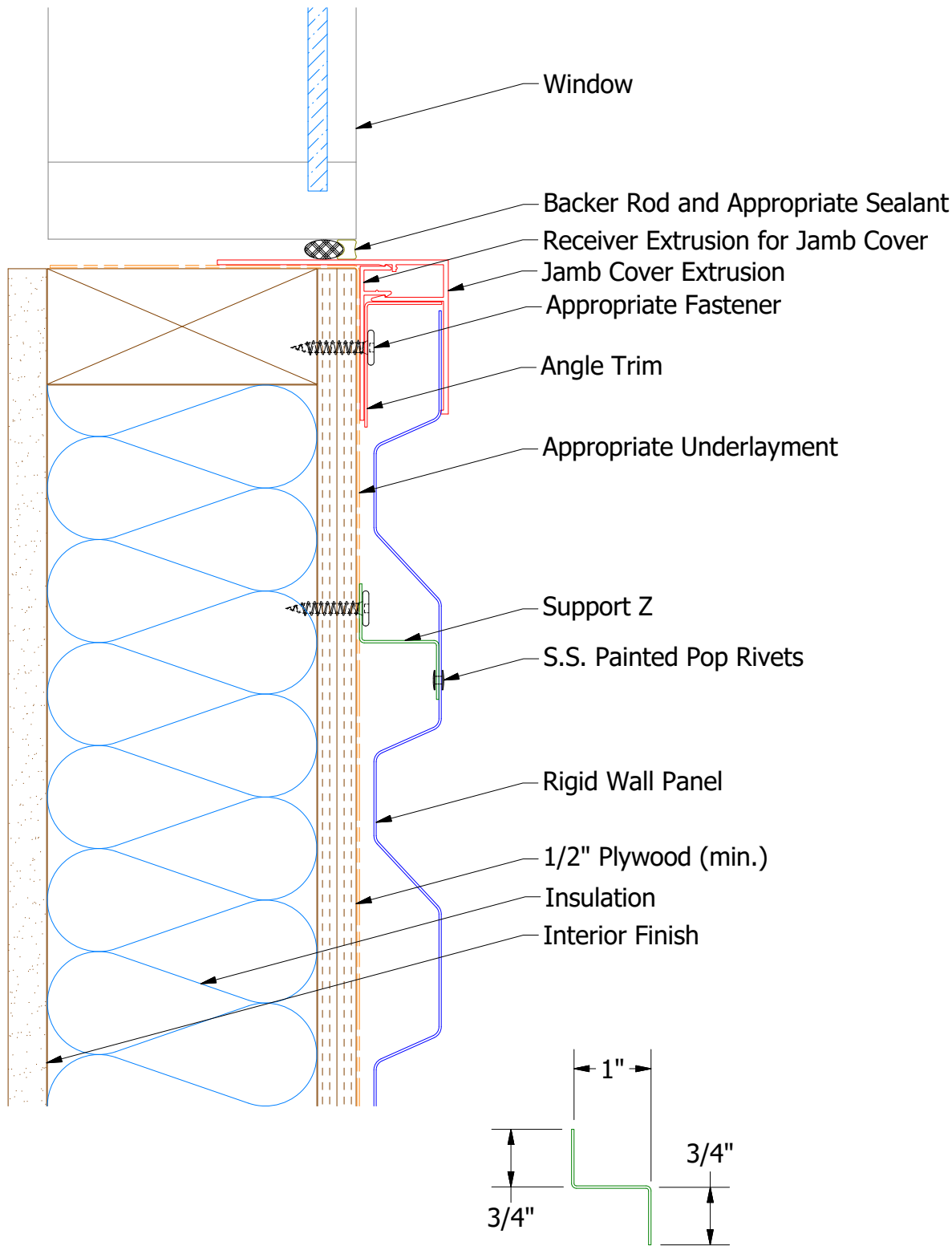
TITLE				Reveal Transition Extrusion Detail			
02	9/23/2021	Removed Notched Neoprene and added new trim	JJP	DWG. NO.	DR	KRK	DATE 11/4/2014
01	3/28/2018	Updated Extrusion Name	KRK	MATERIAL	APP		DATE
REV. NO.	DATE	DESCRIPTION OF REVISION	BY	APP	SH. SIZE	B	SCALE X:X



ATAS INTERNATIONAL, INC  
Allentown PA  
610-395-8445  
Mesa AZ  
480-558-7210



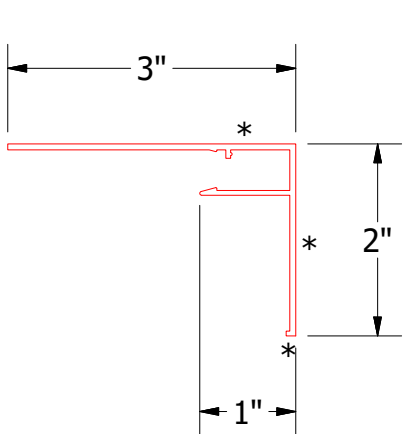
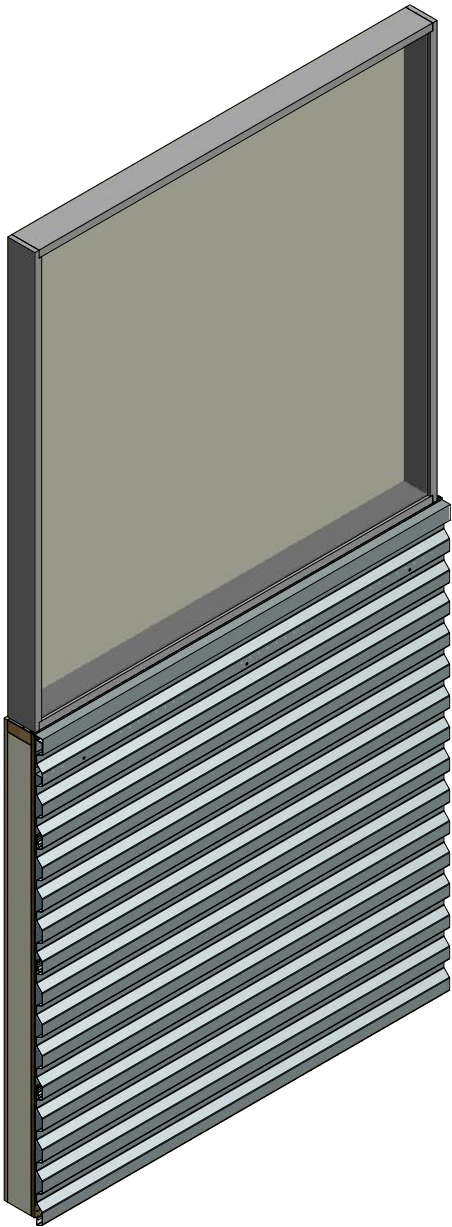
Horizontal Panel



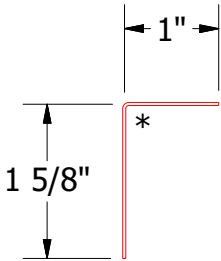
Note: \* denotes painted side

Support Z


Receiver Extrusion for Jamb Cover



Jamb Cover Extrusion



Angle Trim

		ATAS INTERNATIONAL, INC Allentown PA 610-395-8445 Mesa AZ 480-558-7210	
TITLE Window Sill Extruded Detail			
DWG. NO.		DR KRK	DATE 4/22/2015
MATERIAL		APP	DATE
		SH. SIZE B	SCALE X:X