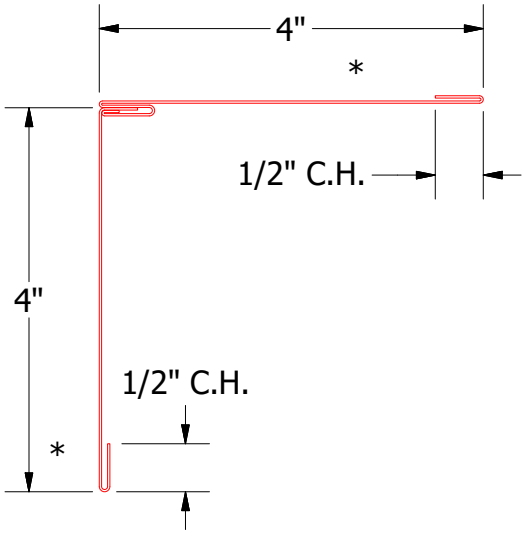
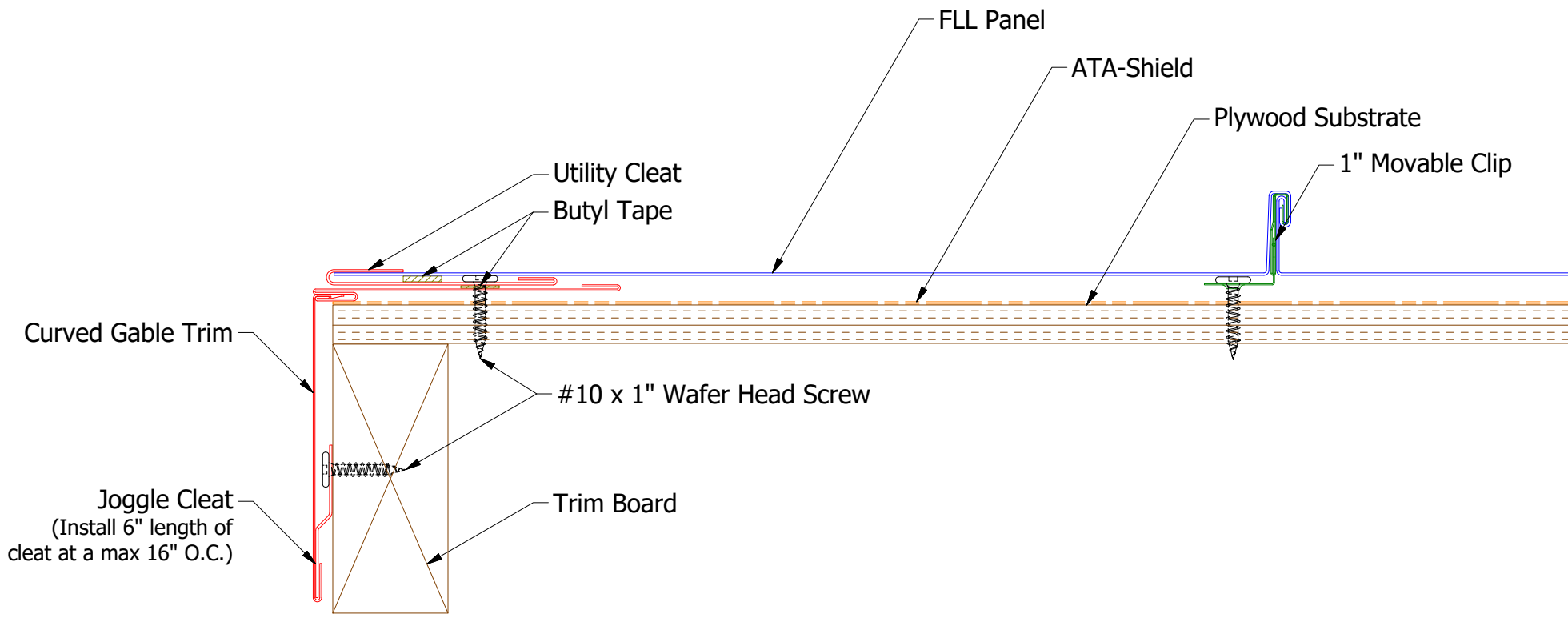
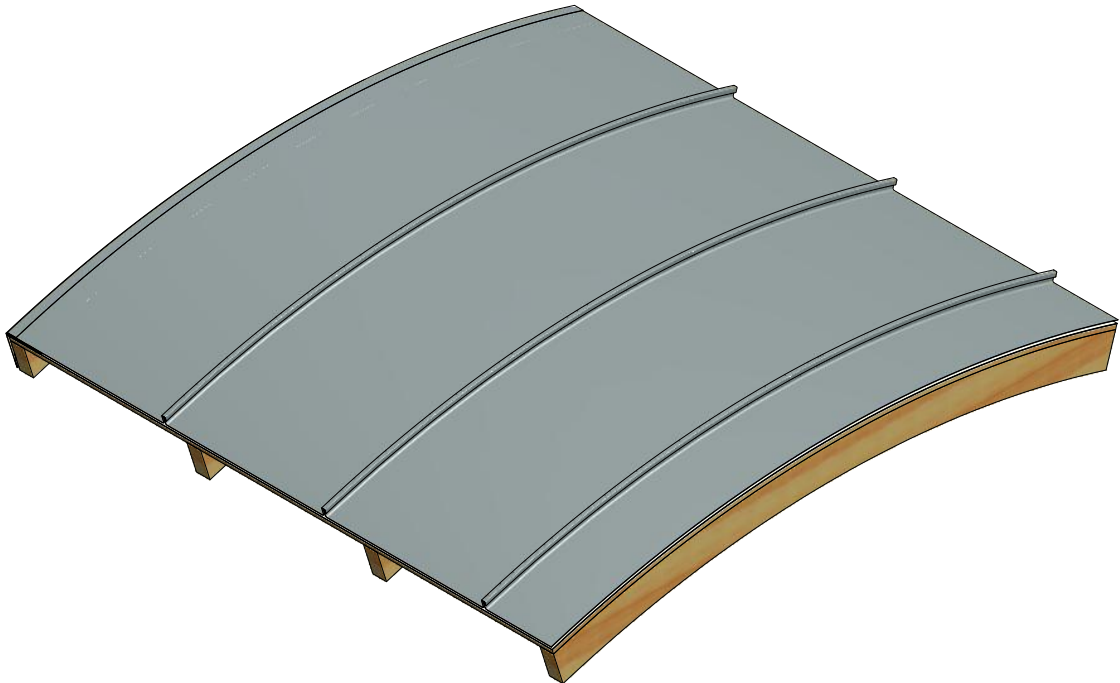
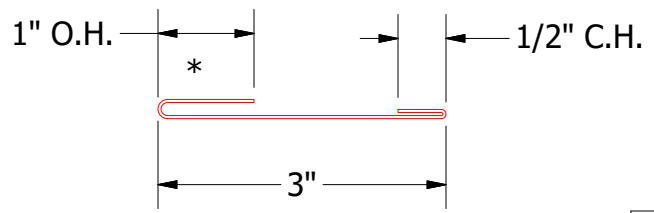


ATAS INTERNATIONAL, INC
 Allentown PA
 610-395-8445
 Mesa AZ
 480-558-7210

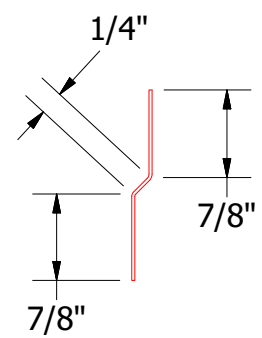
REV. NO.		DATE	DESCRIPTION OF REVISION	BY	APP	TITLE		FLL Clip	
						DWG. NO.	DR	DMR	DATE
							APP		9/9/2016
						MATERIAL		SH. SIZE	SCALE
								B	X:X



SFC999-Curved Gable Trim



FLA962-Utility Cleat

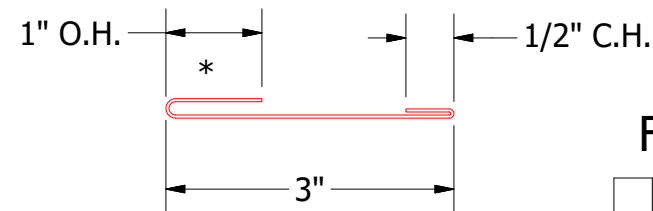
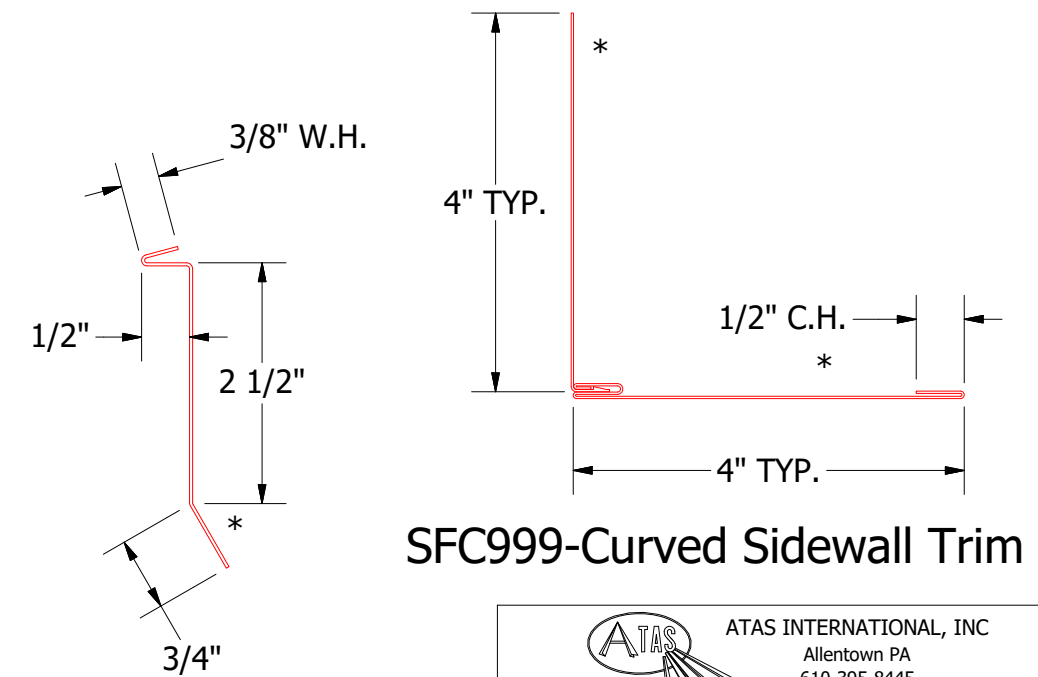
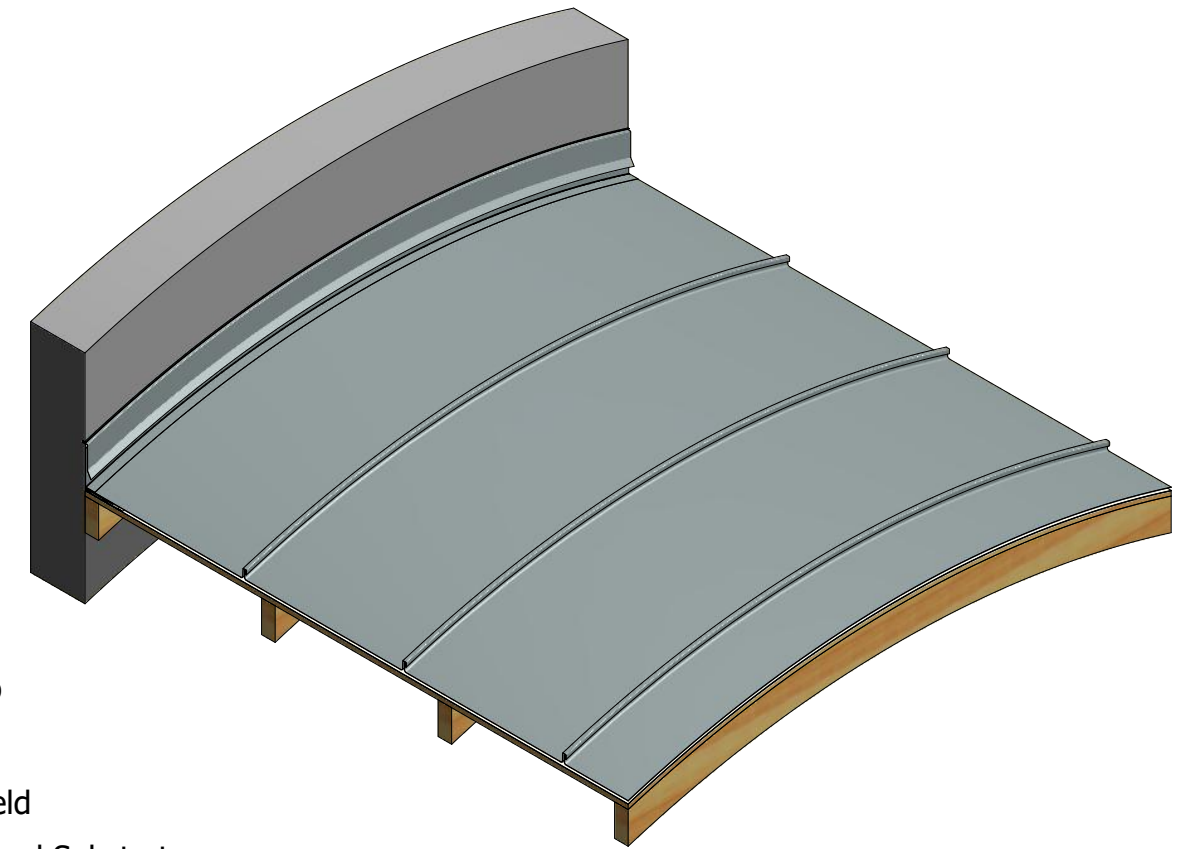
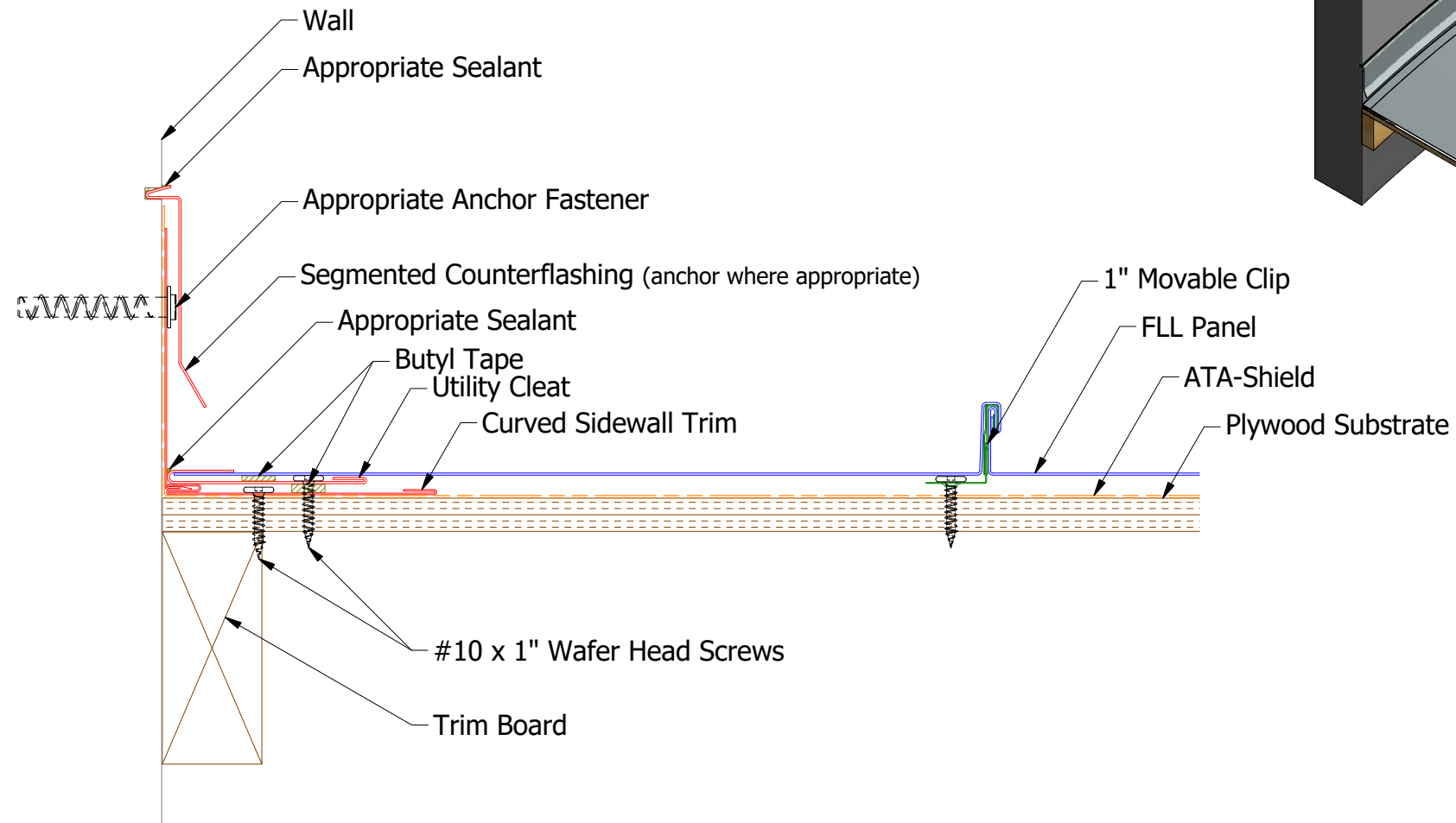


FLA975-Joggle Cleat


ATAS INTERNATIONAL, INC
 Allentown PA
 610-395-8445
 Mesa AZ
 480-558-7210

TITLE		FLL Curved Gable Detail	
REV. NO.	DATE	DESCRIPTION OF REVISION	BY
2	5/29/2019	Updated Clip Information	AJZ
1	6/18/2018	Updated Trim Hems	MBP
DR	KRK	DATE	10/1/2014
APP		DATE	
SH. SIZE	B	SCALE	X:X

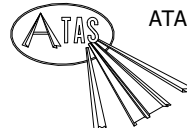
Note: * denotes color side.



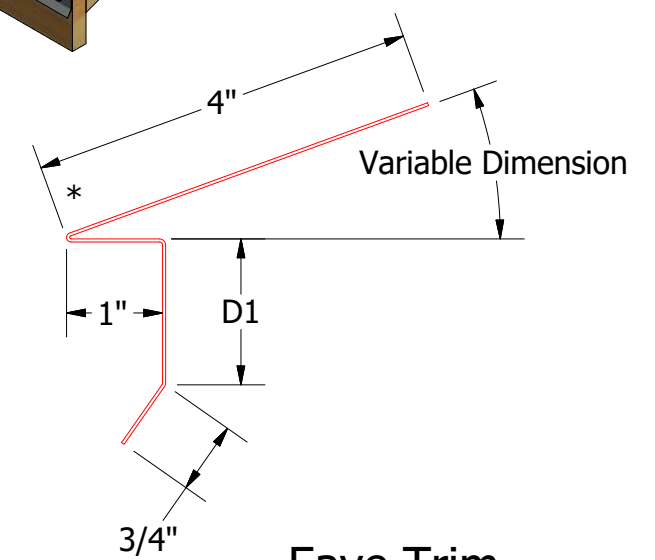
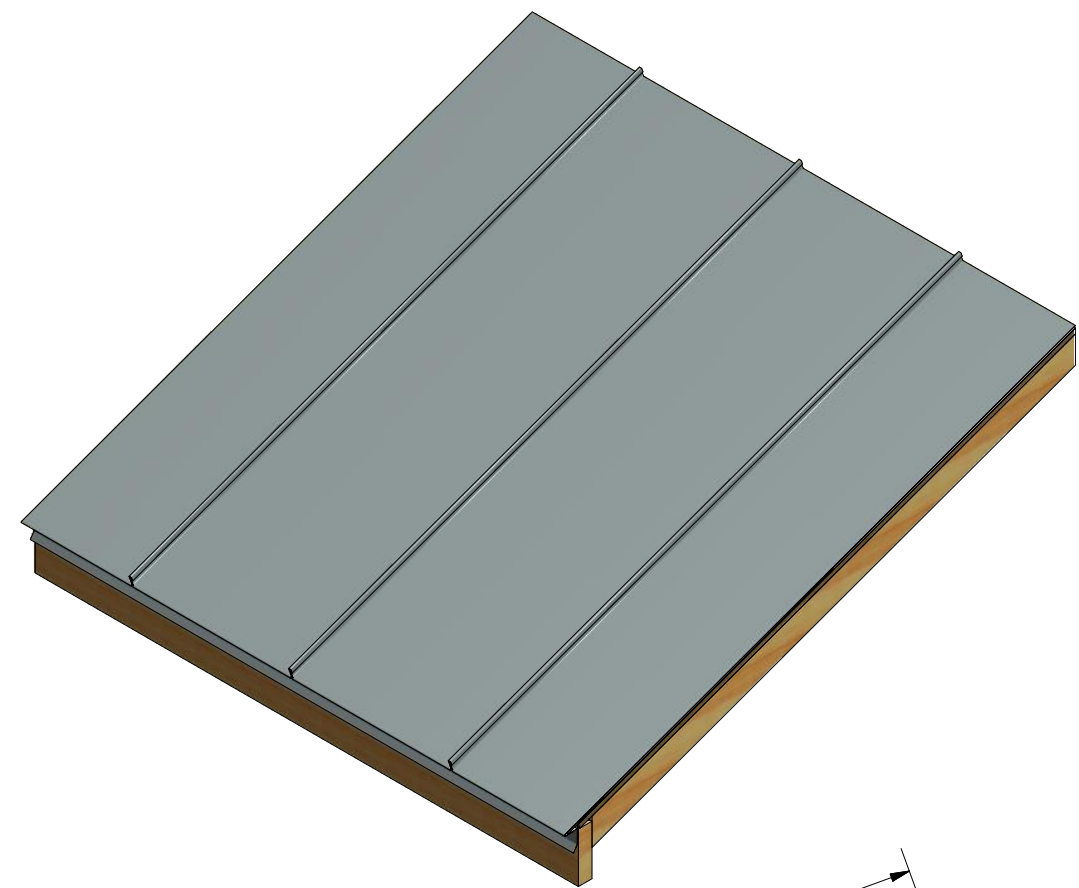
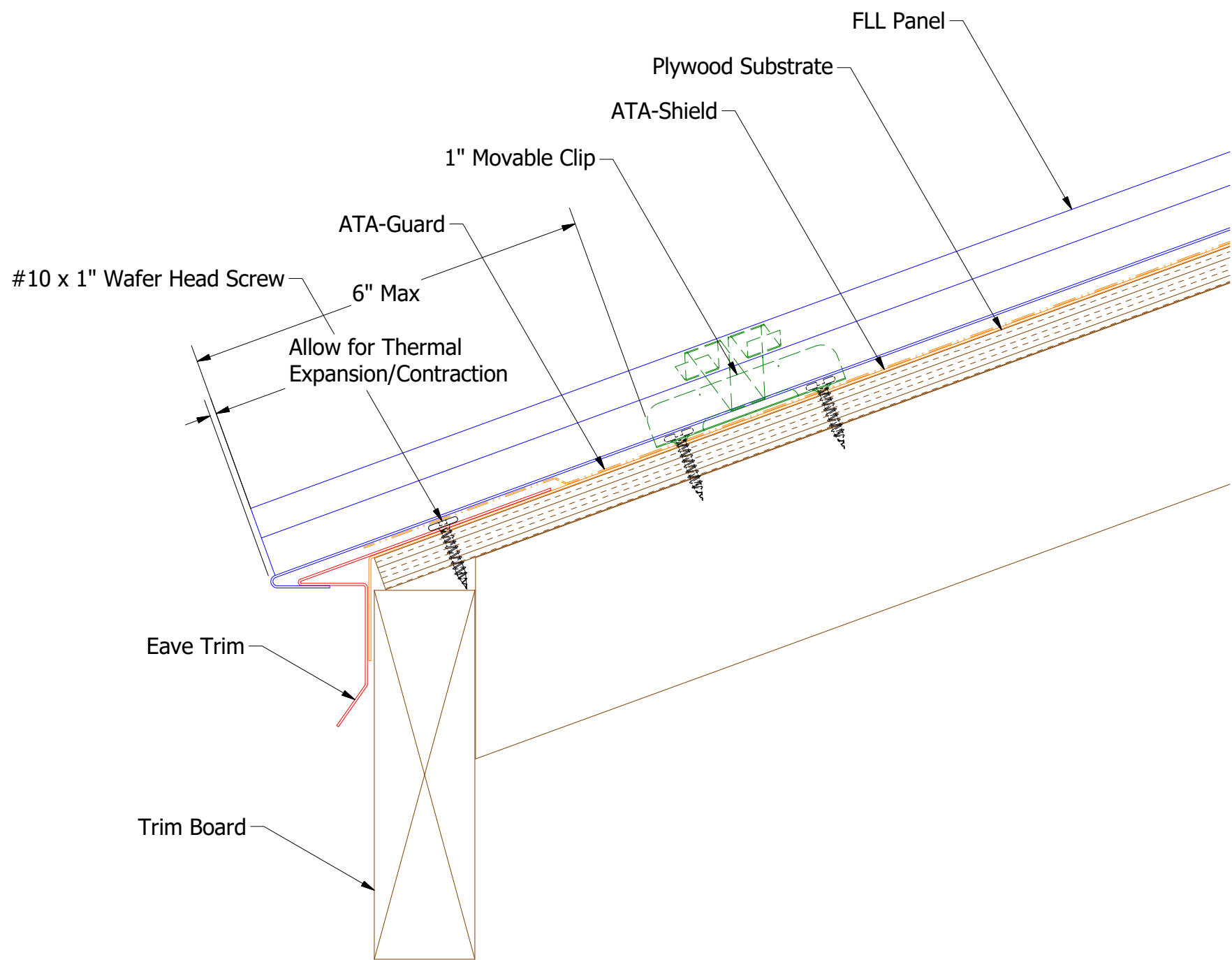
FLA980-Counterflashing

FLA962-Utility Cleat

SFC999-Curved Sidewall Trim

 ATAS INTERNATIONAL, INC Allentown PA 610-395-8445 Mesa AZ 480-558-7210		TITLE	
		FLL Curved Sidewall Detail	
REV. NO.	DATE	DESCRIPTION OF REVISION	BY
2	5/29/2019	Updated Clip Information	AJZ
1	6/18/2018	Updated Hems	MBP
DR	KRK	DATE	10/1/2014
APP	KRK	DATE	
SH. SIZE	B	SCALE	X:X

Note: * denotes color side.



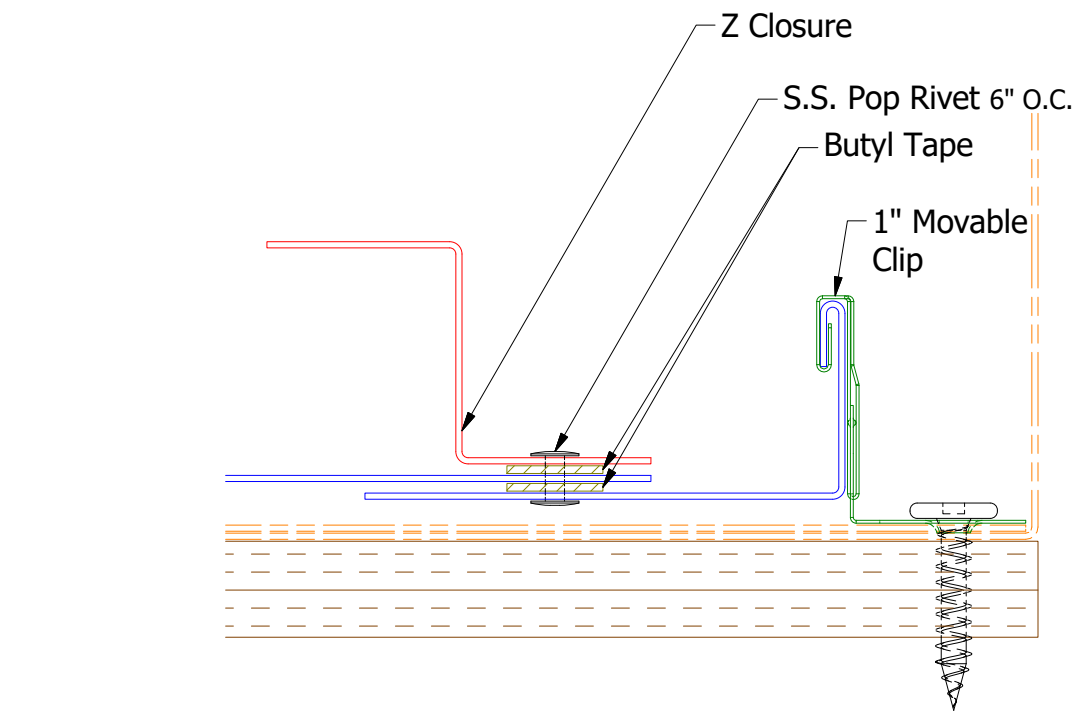
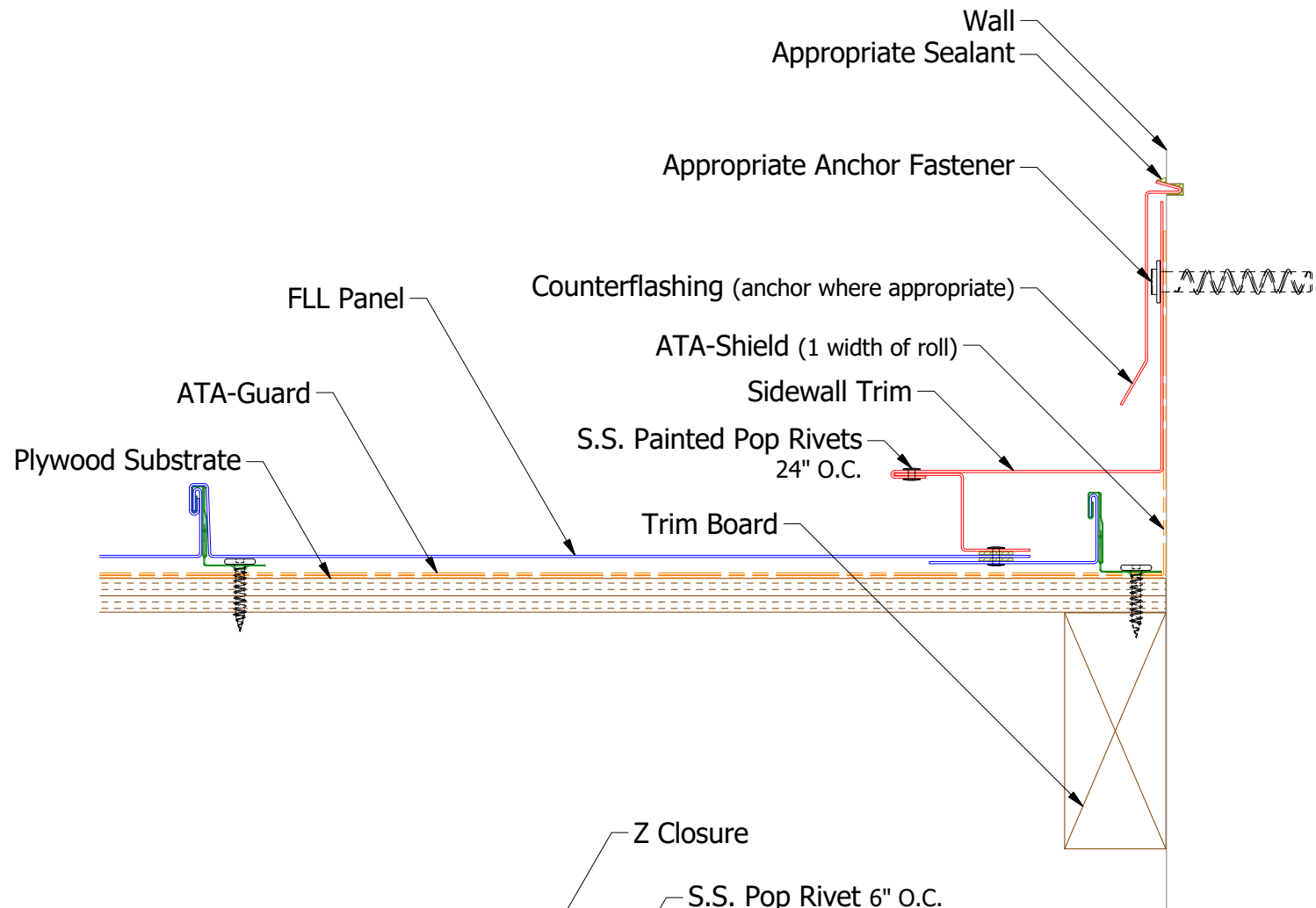
Eave Trim

- FLA111 - 2:12 to 4:12 Slope
D1=1"
- FLA112 - 4:12 to 8:12 Slope
D1 = 1 1/2"
- FLA113 - 8:12 to 12:12 Slope
D1 = 2"

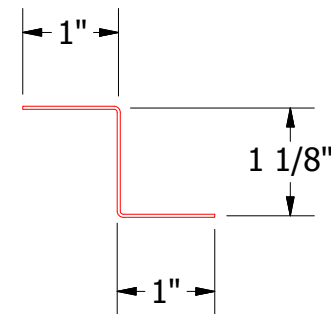
Note: * denotes color side.

ATAS INTERNATIONAL, INC
 Allentown PA
 610-395-8445
 Mesa AZ
 480-558-7210

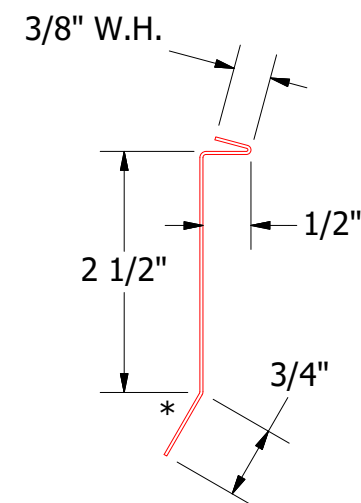
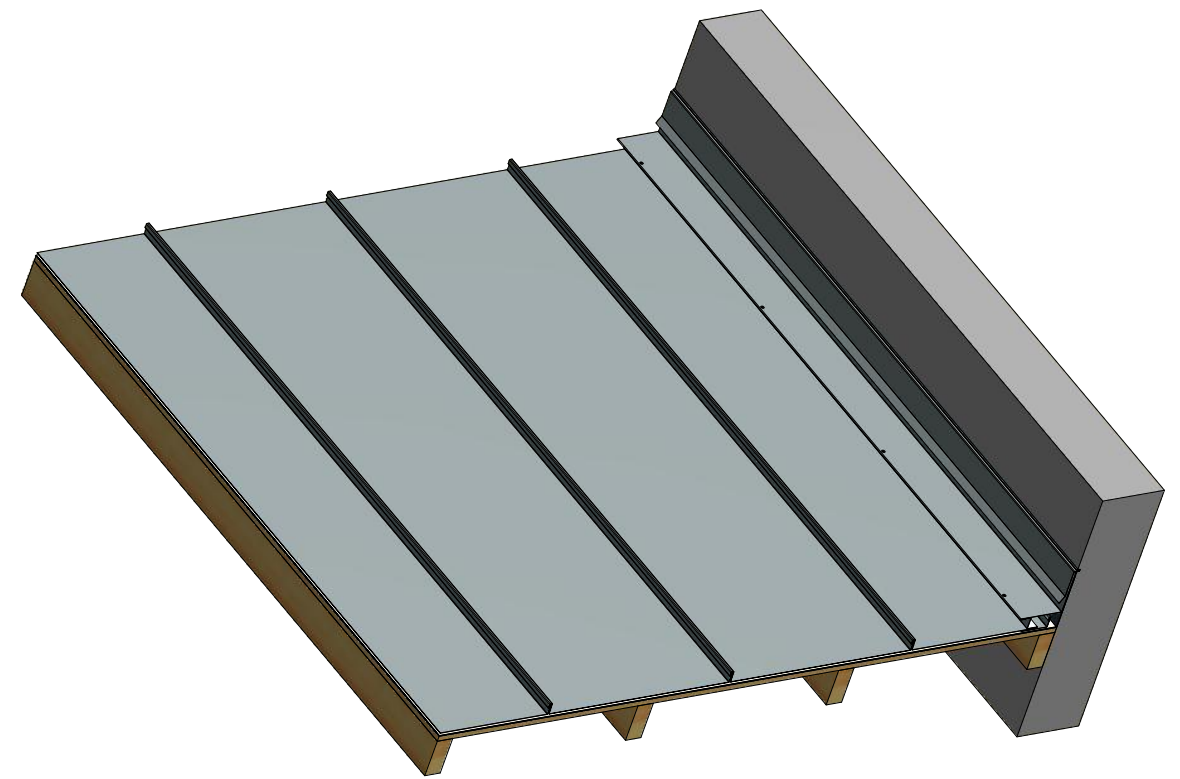
REV. NO.	DATE	DESCRIPTION OF REVISION	BY	APP	TITLE	DWG. NO.	DR	DATE
2	5/29/2019	Updated Clip Information	AJZ	KRK	FLL Eave Detail	DWG. NO.	KRK	9/29/2014
1	6/18/2018	Updated Substrate	MBP				APP	DATE
					MATERIAL		SH. SIZE	B
							SCALE	X:X



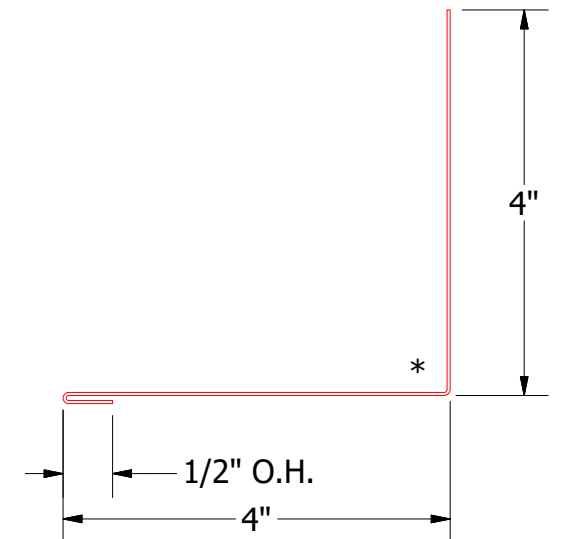
Butyl Tape Detail



FLA914-Z Closure



FLA980-Counterflashing

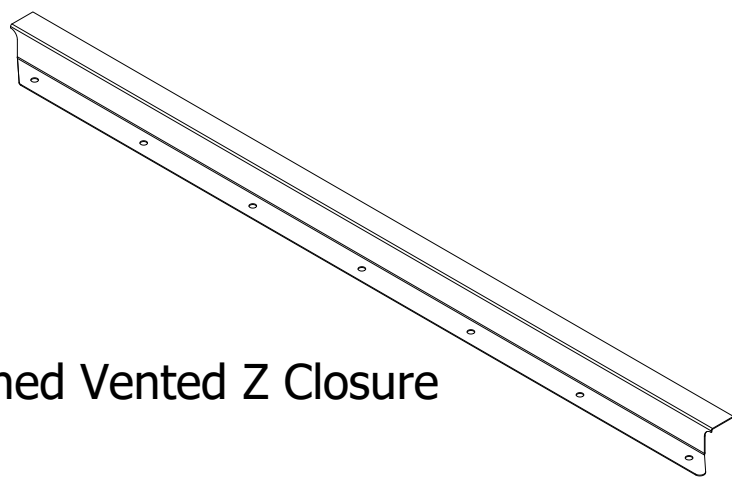
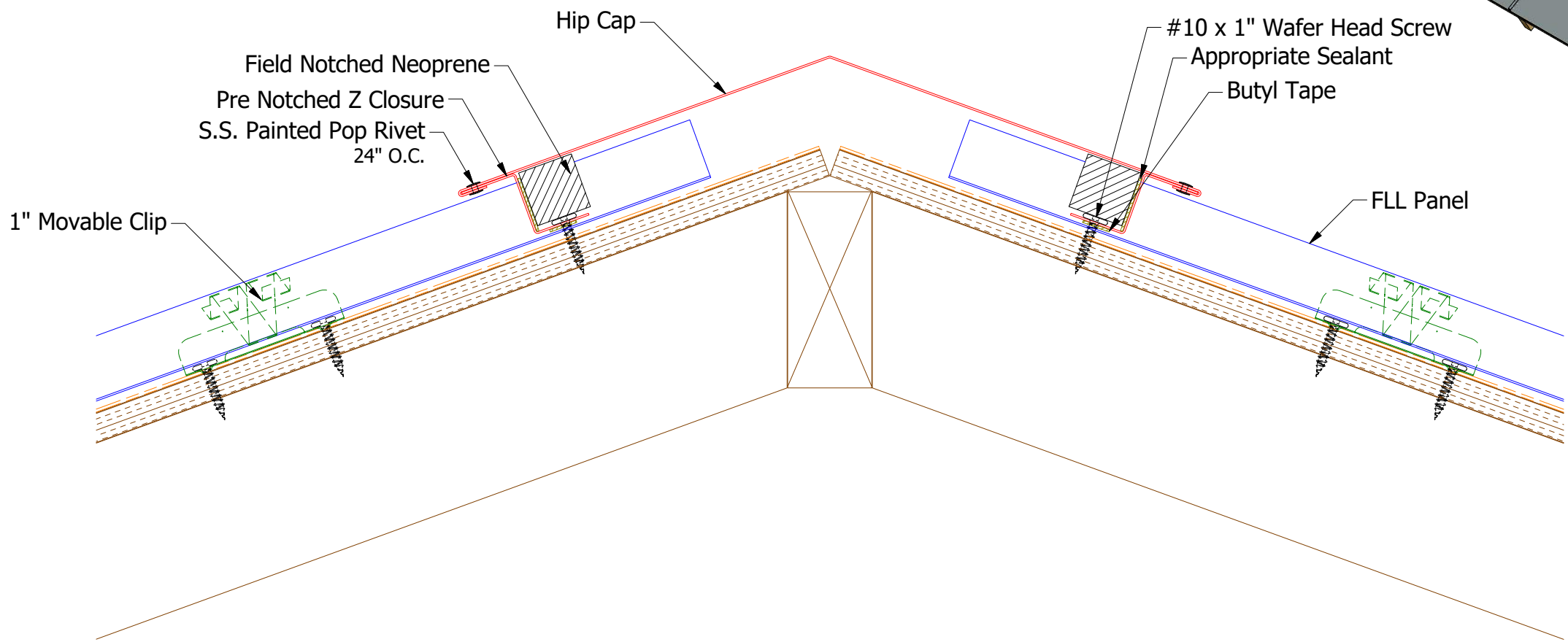
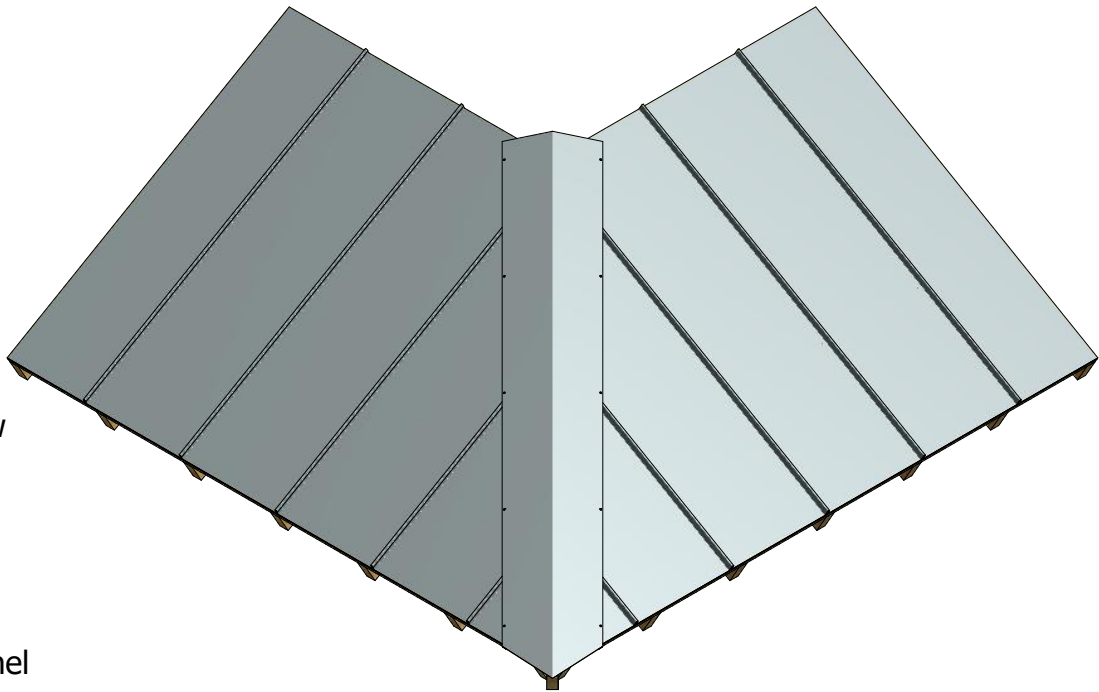


FLA410-Sidewall Trim

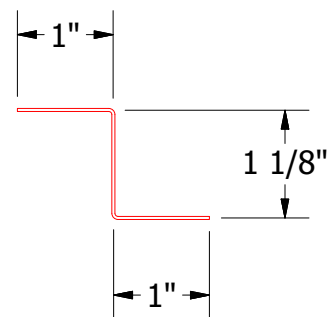
Note: * denotes color side.

REV. NO.	DATE	DESCRIPTION OF REVISION	BY	APP	TITLE	DWG. NO.	DR	DATE
2	5/29/2019	Updated Clip Information	AJZ	KRK	FLL Ending Sidewall Detail	APP	KRK	9/29/2014
1	6/18/18	Dimension Updating	JC				DATE	
					MATERIAL		SH. SIZE	B
							SCALE	X:X

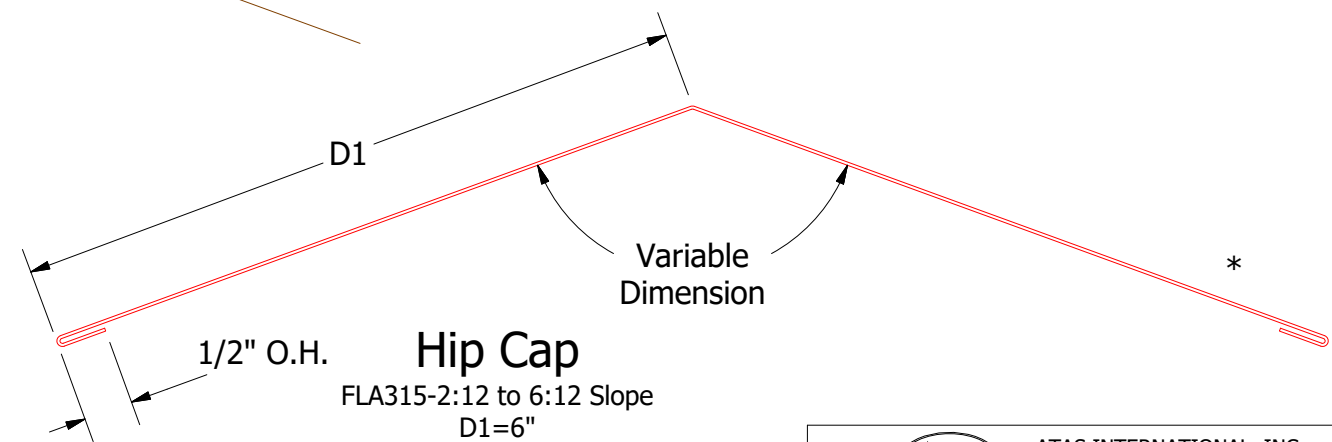
ATAS ATAS INTERNATIONAL, INC
 Allentown PA
 610-395-8445
 Mesa AZ
 480-558-7210



Pre Notched Vented Z Closure

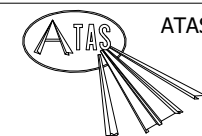


FLA914-Z Closure



Hip Cap

- FLA315-2:12 to 6:12 Slope
D1=6"
- FLA316-6:12 to 9:12 Slope
D1=7"
- FLA317-9:12 to 12:12 Slope
D1=8"



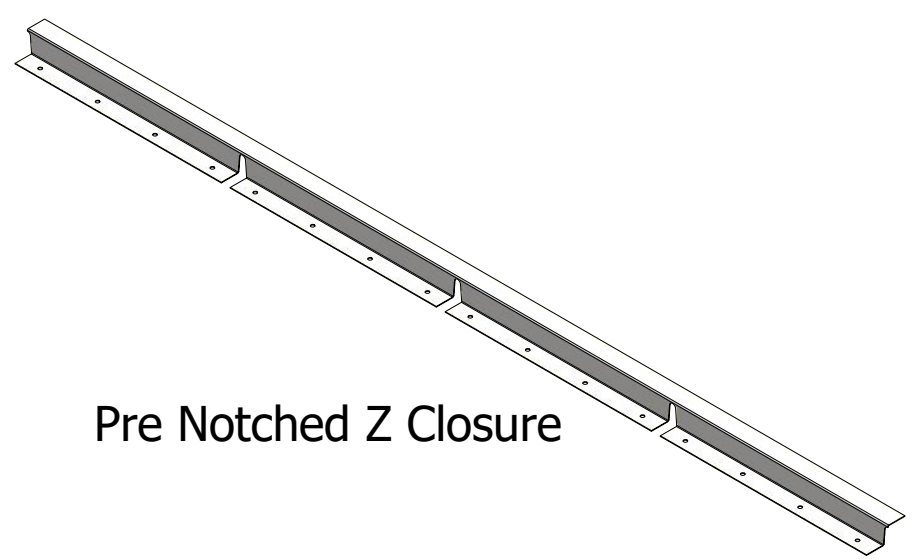
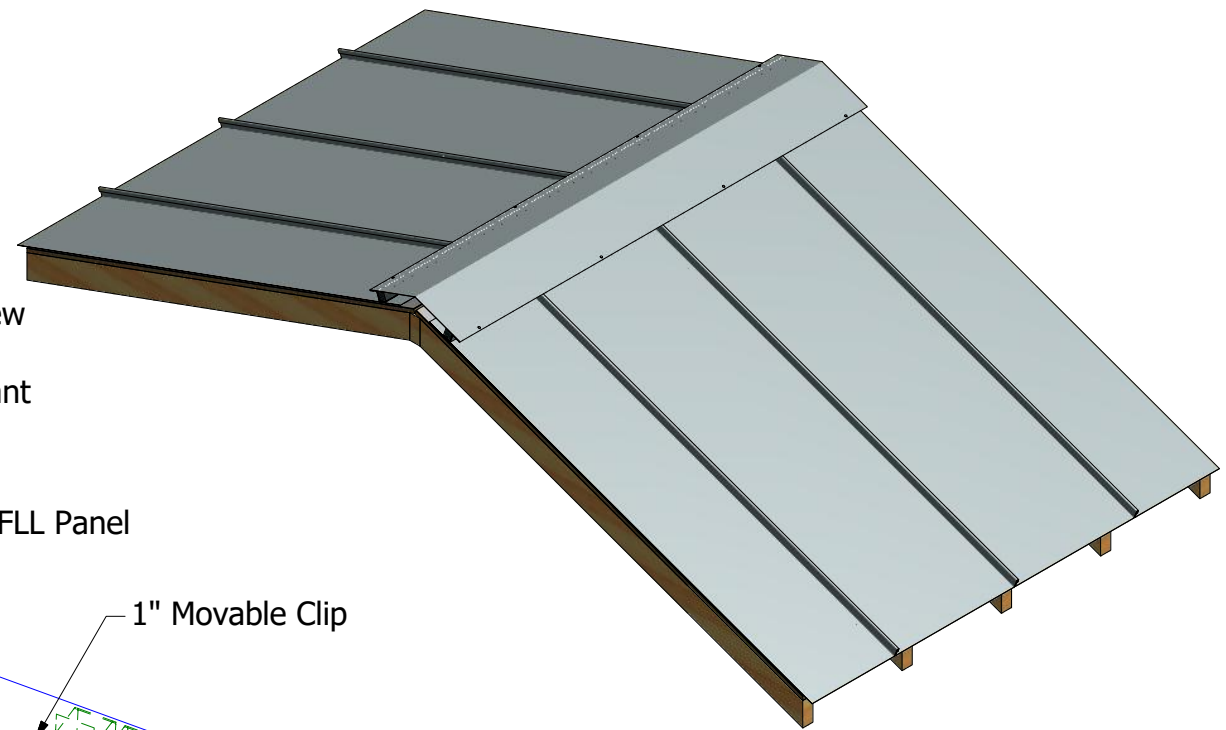
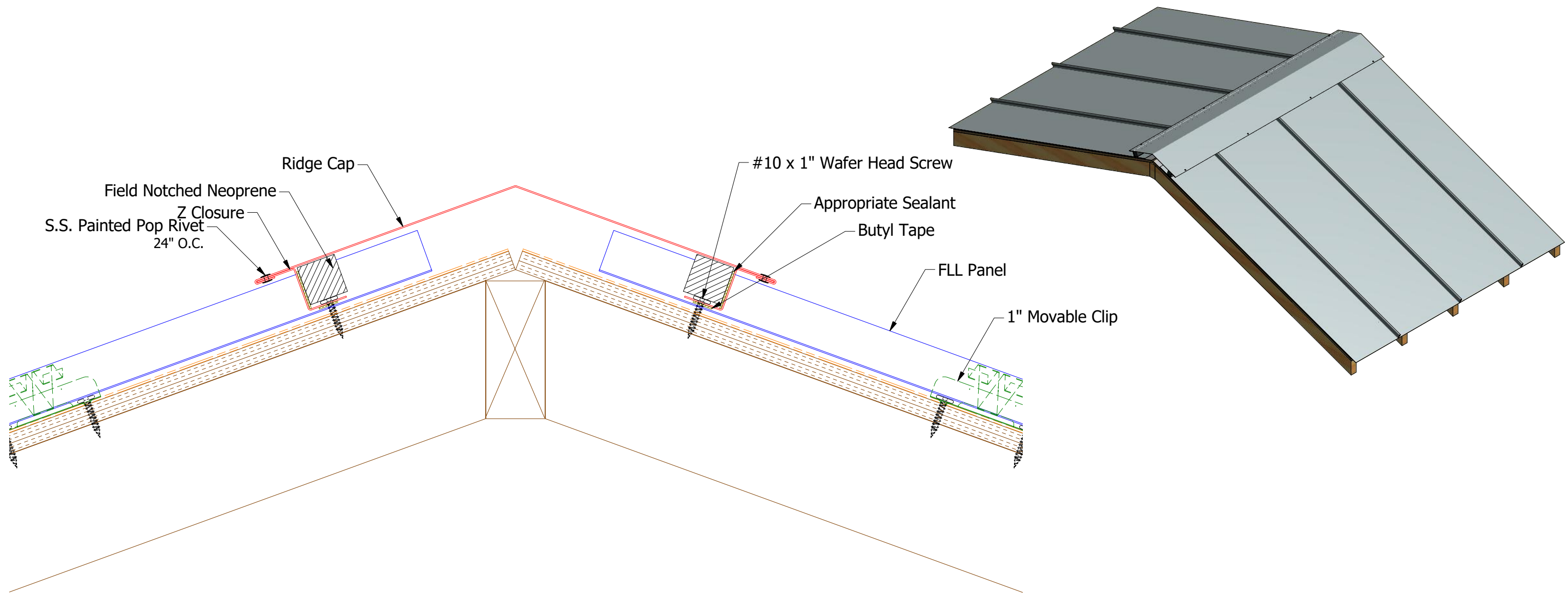
ATAS INTERNATIONAL, INC
Allentown PA
610-395-8445
Mesa AZ
480-558-7210

FLL Hip Detail

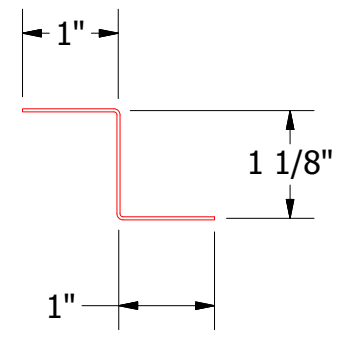
REV. NO.	DATE	DESCRIPTION OF REVISION	BY	APP	TITLE	DR	DATE
2	5/29/2019	Updated Clip Information	AJZ	KRK	DWG. NO.	DR	9/30/2014
1	6/18/2018	Updated Hems and Labels	MBP		MATERIAL	APP	DATE
						SH. SIZE	SCALE

Note: * denotes color side.

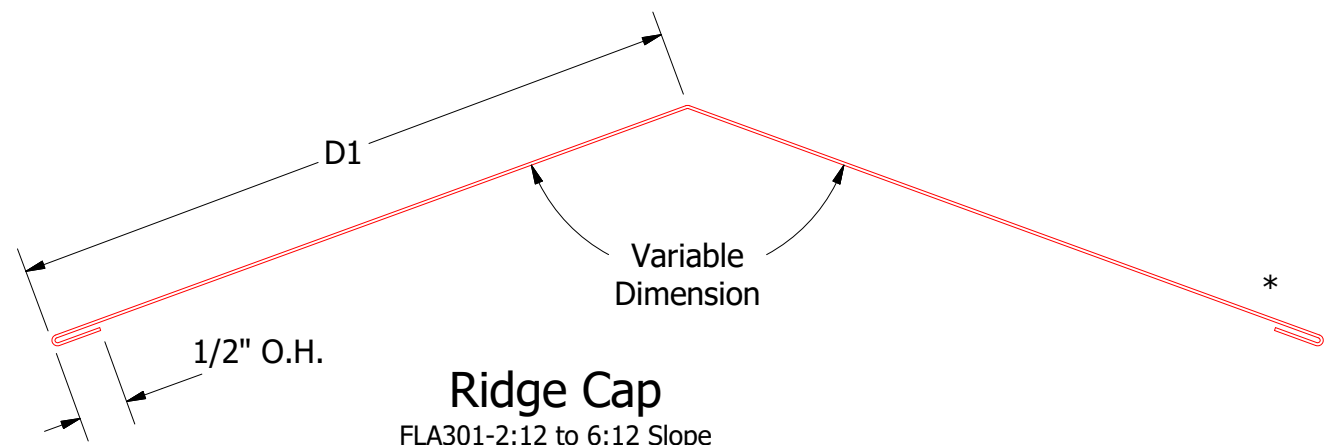
Note: Neoprene Closures are not required if Factory Pre Notched Z Closures are utilized.



Pre Notched Z Closure



FLA914-Z Closure



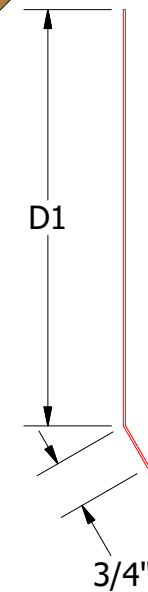
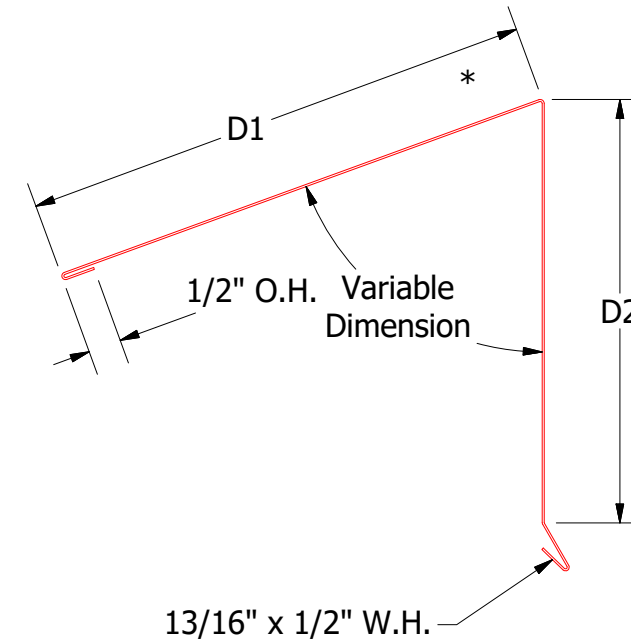
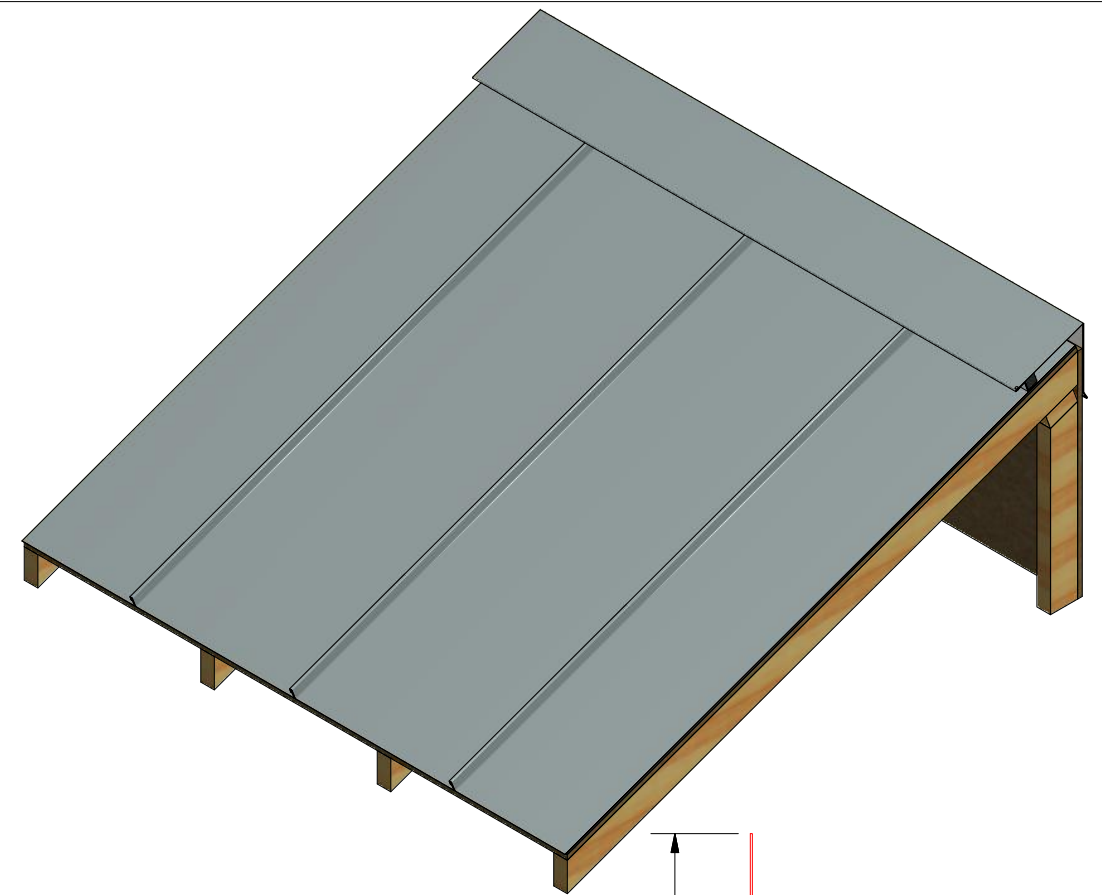
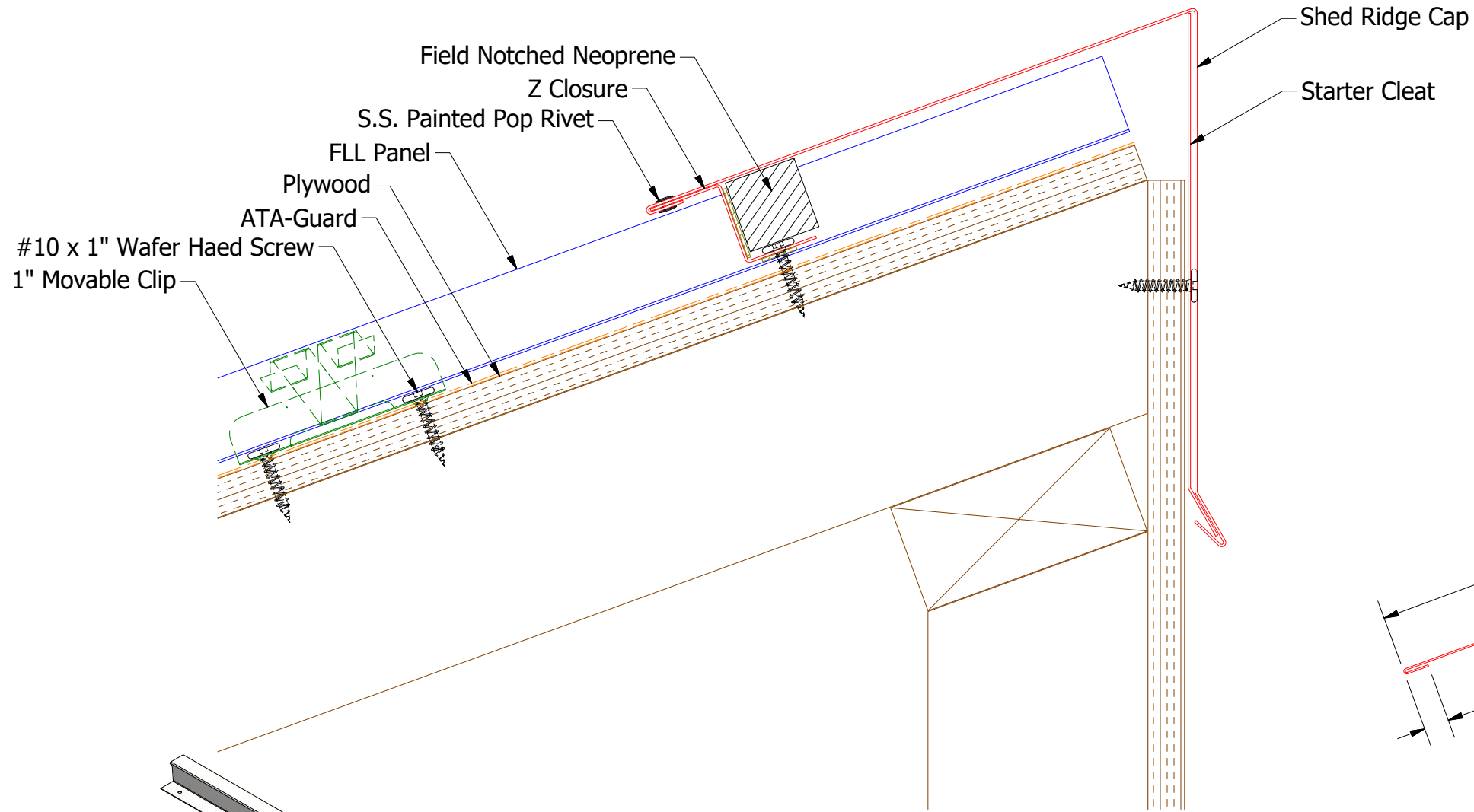
Ridge Cap

- FLA301-2:12 to 6:12 Slope
D1=7"
- FLA302-6:12 to 9:12 Slope
D1=8"
- FLA303-9:12 to 12:12 Slope
D1=9"

ATAS ATAS INTERNATIONAL, INC
 Allentown PA
 610-395-8445
 Mesa AZ
 480-558-7210

Note: * denotes color side.
 Note: Neoprene Closures are not required if Factory Pre Notched Z Closures are utilized.

REV. NO.		DATE	DESCRIPTION OF REVISION	BY	APP	TITLE		DR	DATE
2	5/29/2019		Updated Clip Information	AJZ	KRK	FLL Ridge Detail		KRK	9/30/2014
1	6/18/2018		Updated Hems	MBP				APP	DATE
						SH. SIZE		B	SCALE
									X:X

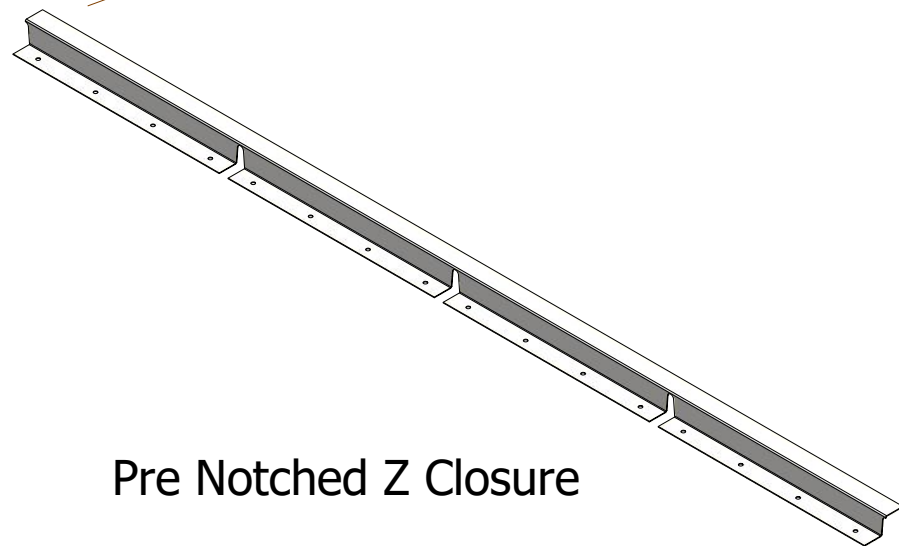


FLA349-Shed Ridge Starter Cleat

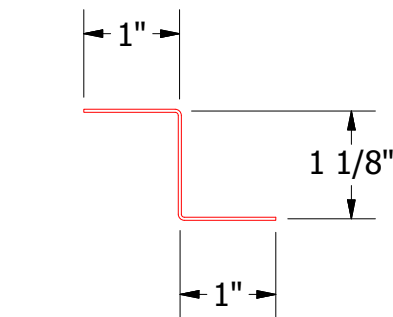
2:12 to 6:12 Slope
D1=6.125"
6:12 to 9:12 Slope
D1=6.375"
9:12 to 12:12 Slope
D1=6.625"

FLA346-Shed Ridge Cap

FLA342 - 2:12 to 6:12 Slope
D1=7", D2=6.25"
FLA344 - 6:12 to 9:12 Slope
D1 = 8", D2=6.5"
FLA346 - 9:12 to 12:12 Slope
D1 = 9", D2=6.75"



Pre Notched Z Closure



FLA914-Z Closure

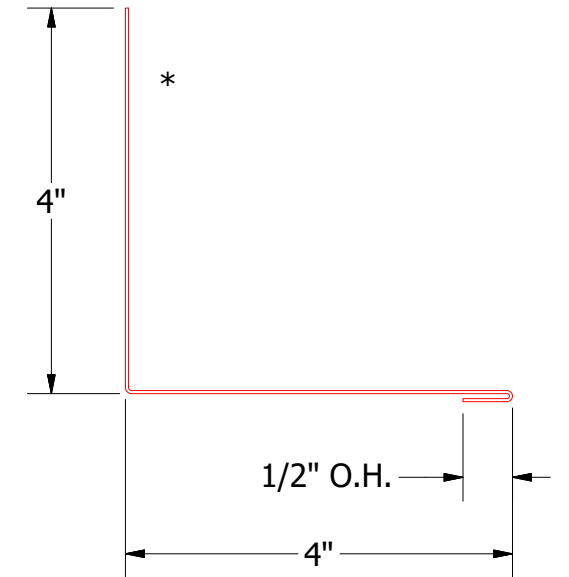
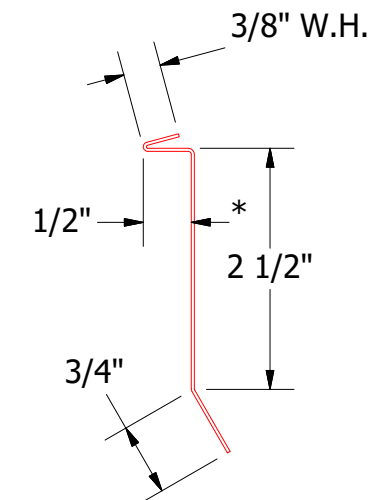
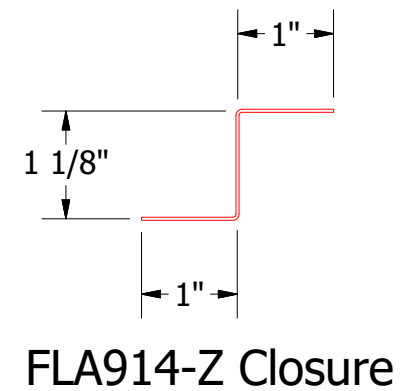
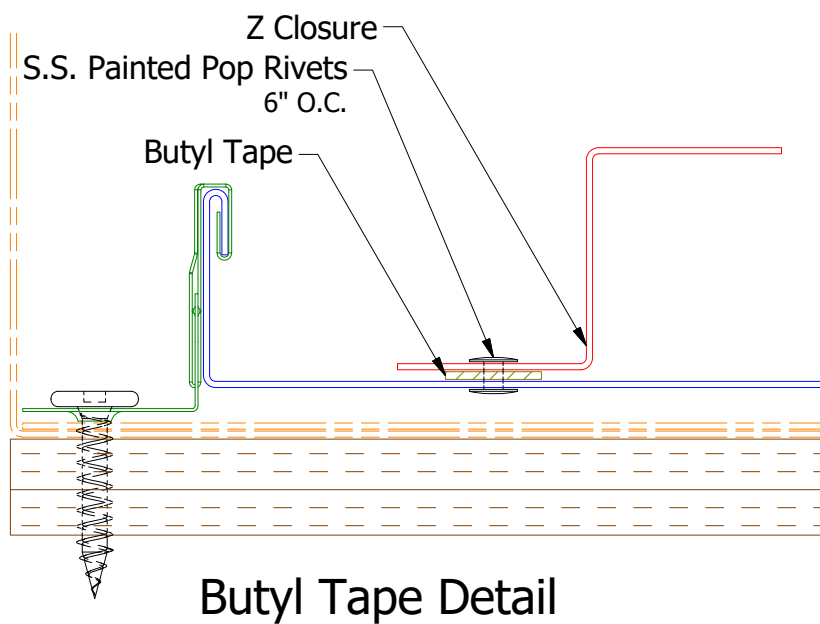
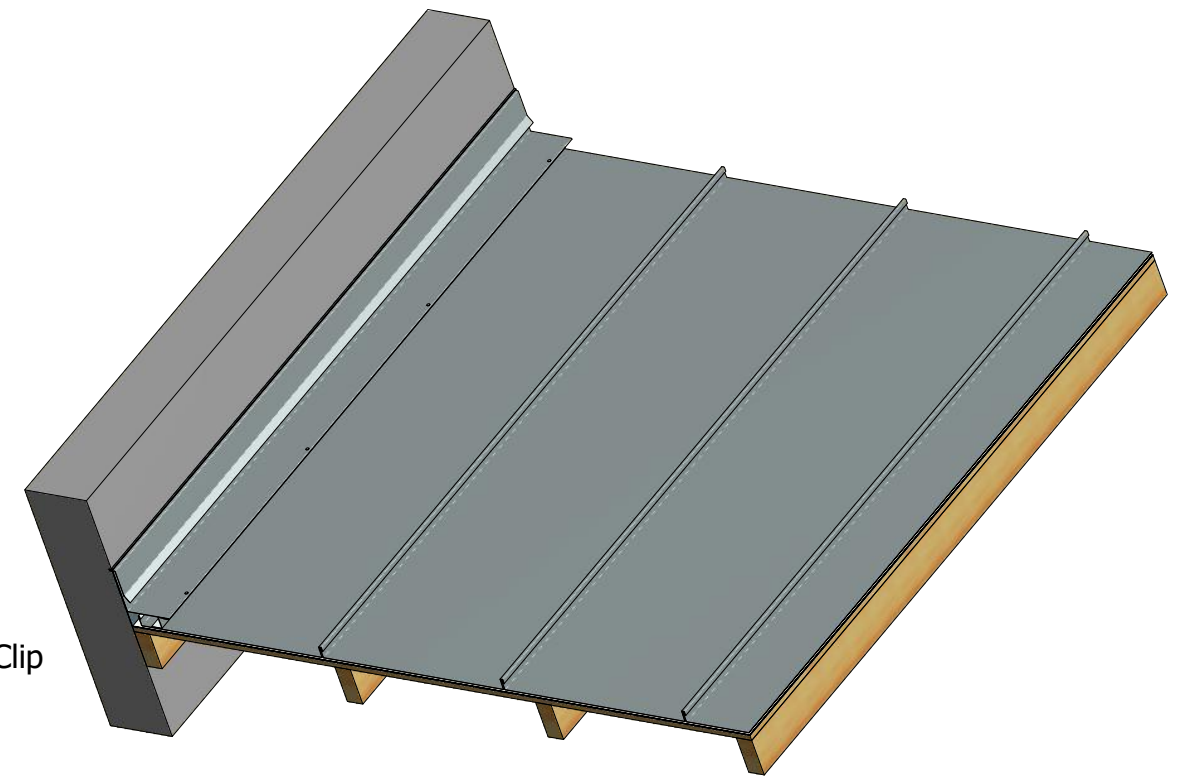
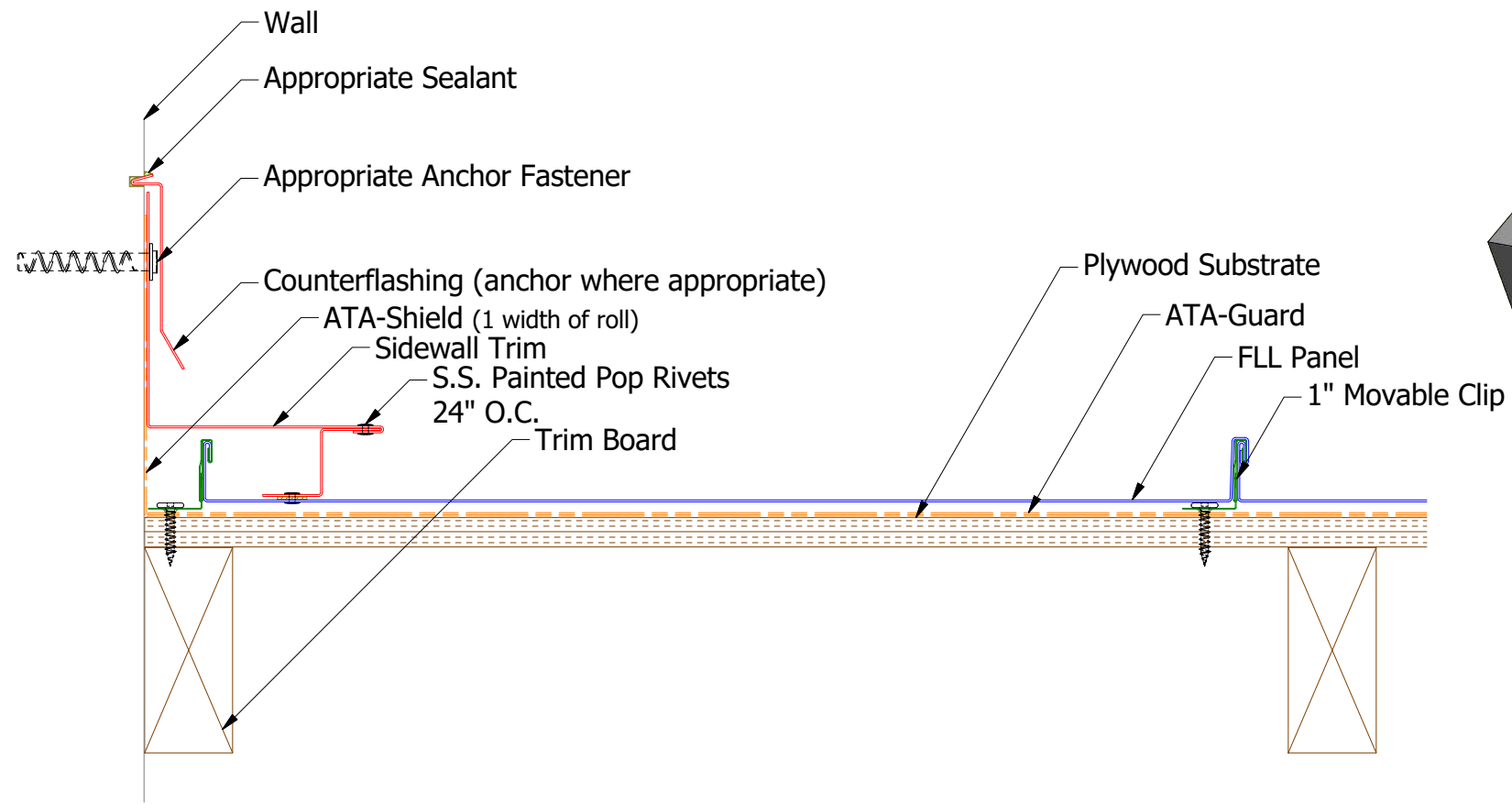
ATAS INTERNATIONAL, INC
Allentown PA
610-395-8445
Mesa AZ
480-558-7210

FLL Shed Ridge Detail


Note: * denotes color side.

Note: Neoprene Closures are not required if Factory Pre Notched Z Closures are utilized.

REV. NO.	DATE	DESCRIPTION OF REVISION	BY	APP	TITLE	DWG. NO.	DR	DATE
2	5/29/2019	Updated Clip Information	AJZ	KRK	FLL Shed Ridge Detail	DWG. NO.	DR	9/30/2014
1	6/18/2018	Updated Variable Dimensions and Hems	MBP	APP				DATE
					MATERIAL		SH. SIZE	B
							SCALE	X:X

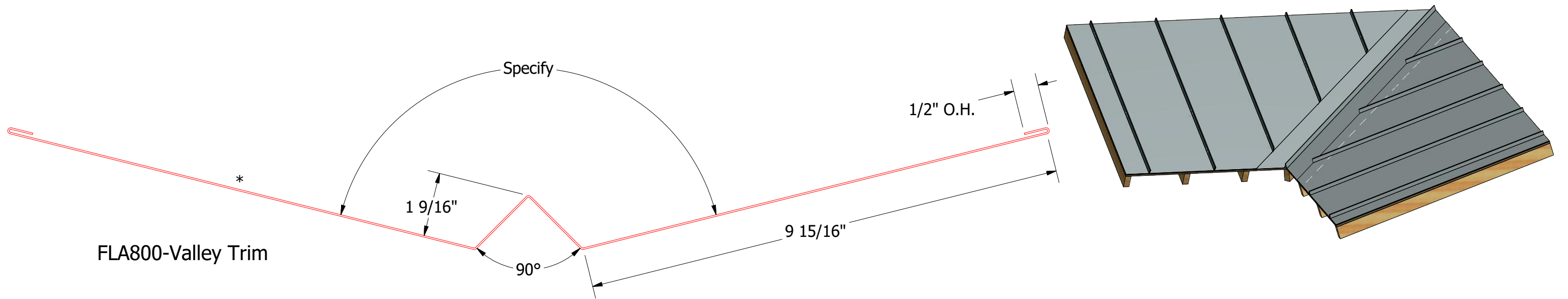


FLA410-Sidewall Trim

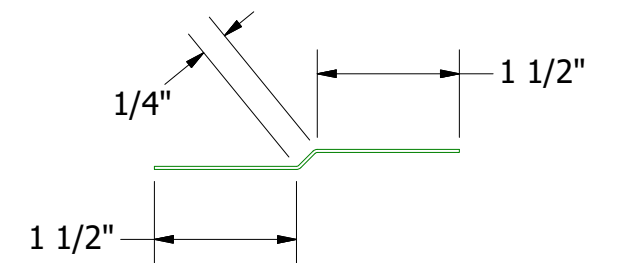
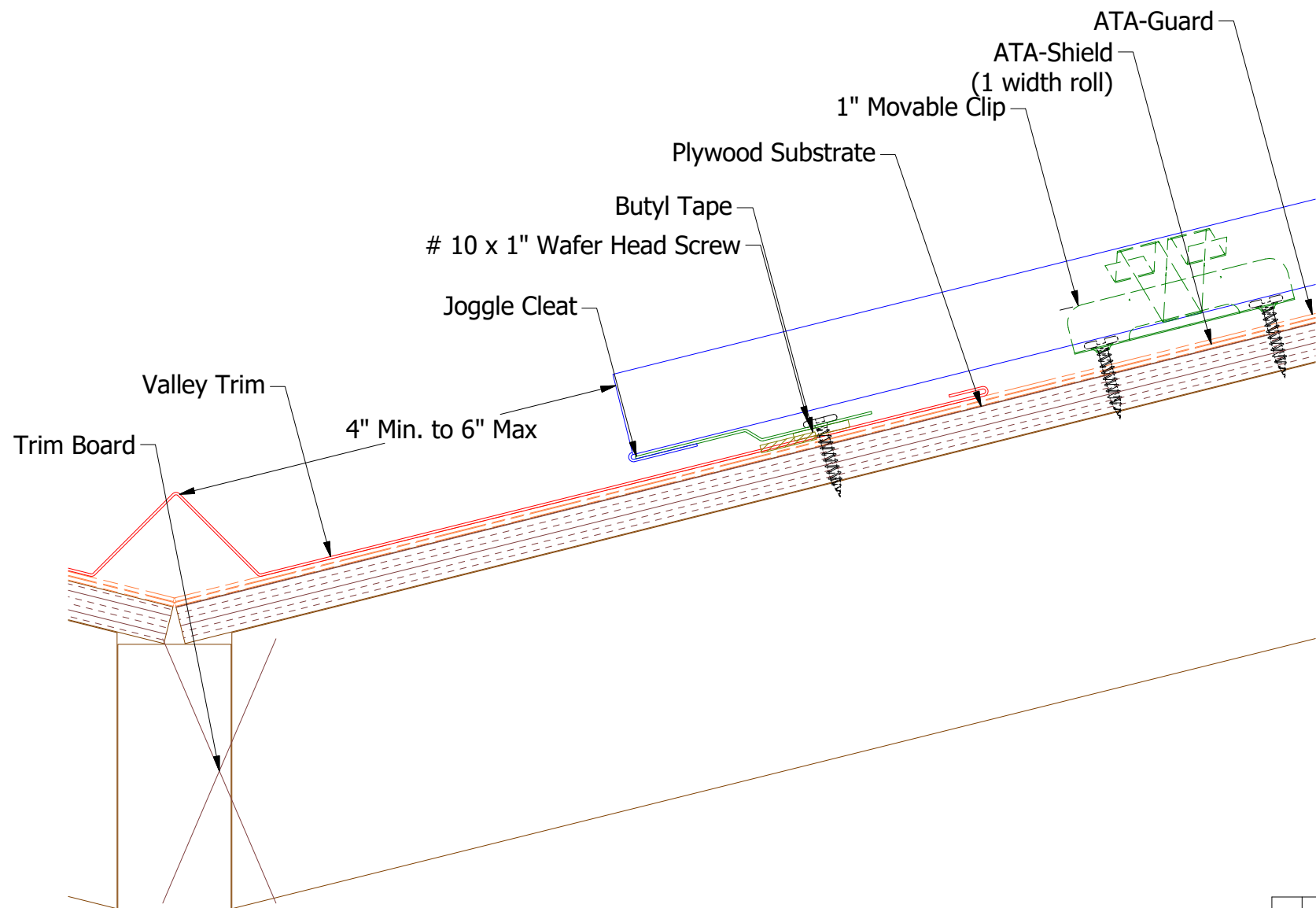

ATAS INTERNATIONAL, INC
 Allentown PA
 610-395-8445
 Mesa AZ
 480-558-7210

TITLE		FLL Starting Sidewall Detail	
2	5/29/2019	Updated Clip Information	AJZ KRK
1	6/19/2018	Updated Titles and Substrate	MBP
REV. NO.	DATE	DESCRIPTION OF REVISION	BY APP
DWG. NO.		DR	DATE
MATERIAL		APP	DATE
SH. SIZE		B	SCALE
			X:X

Note: * denotes color side.



FLA800-Valley Trim



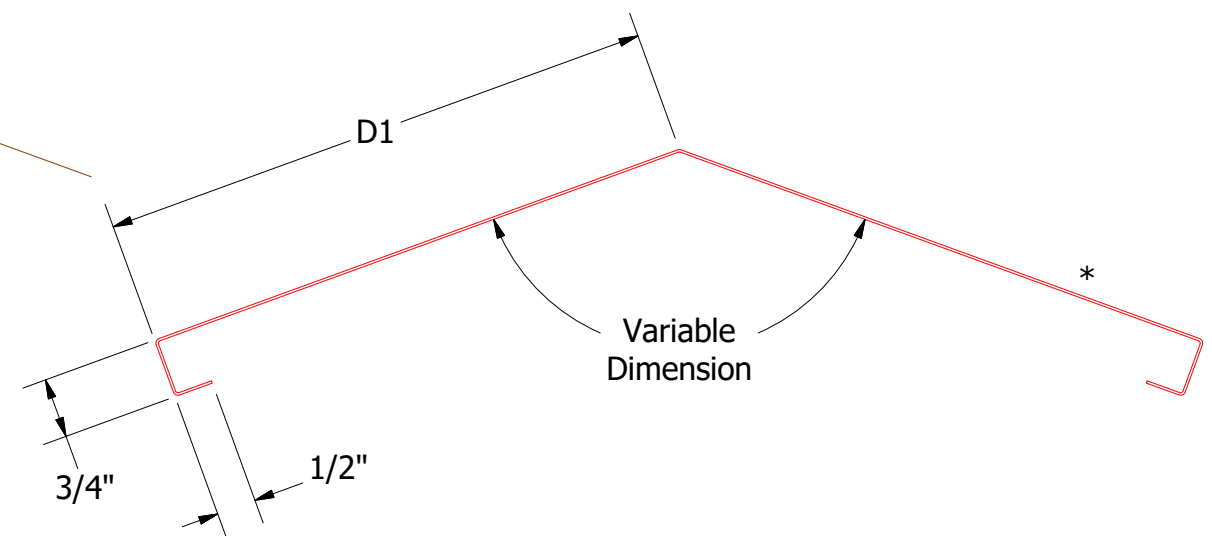
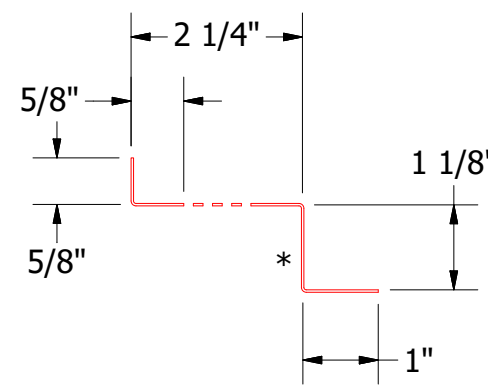
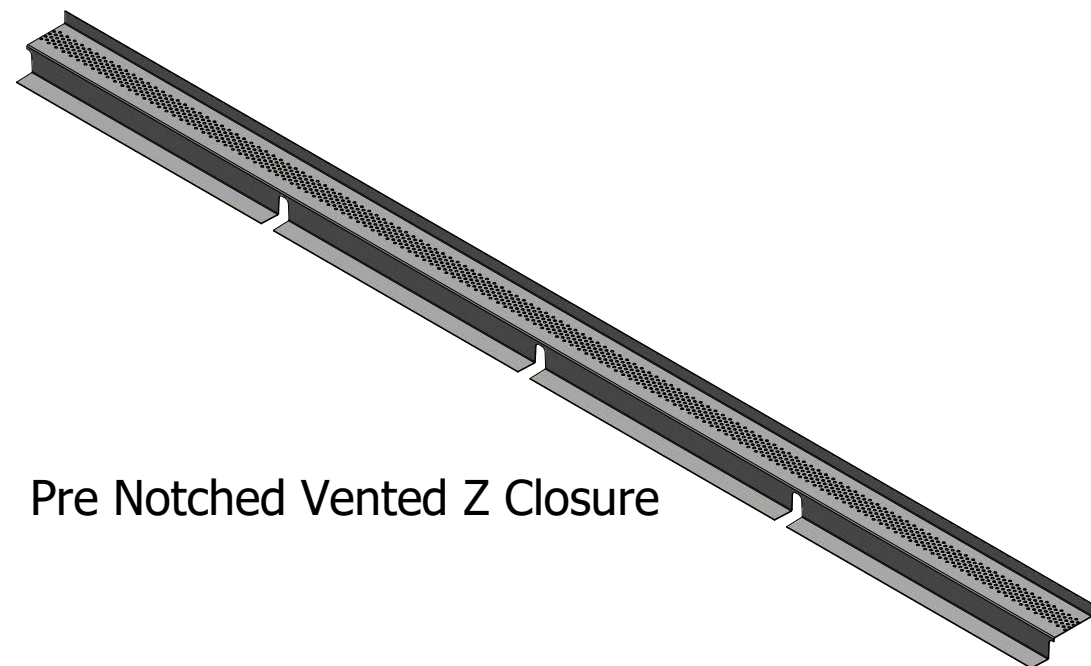
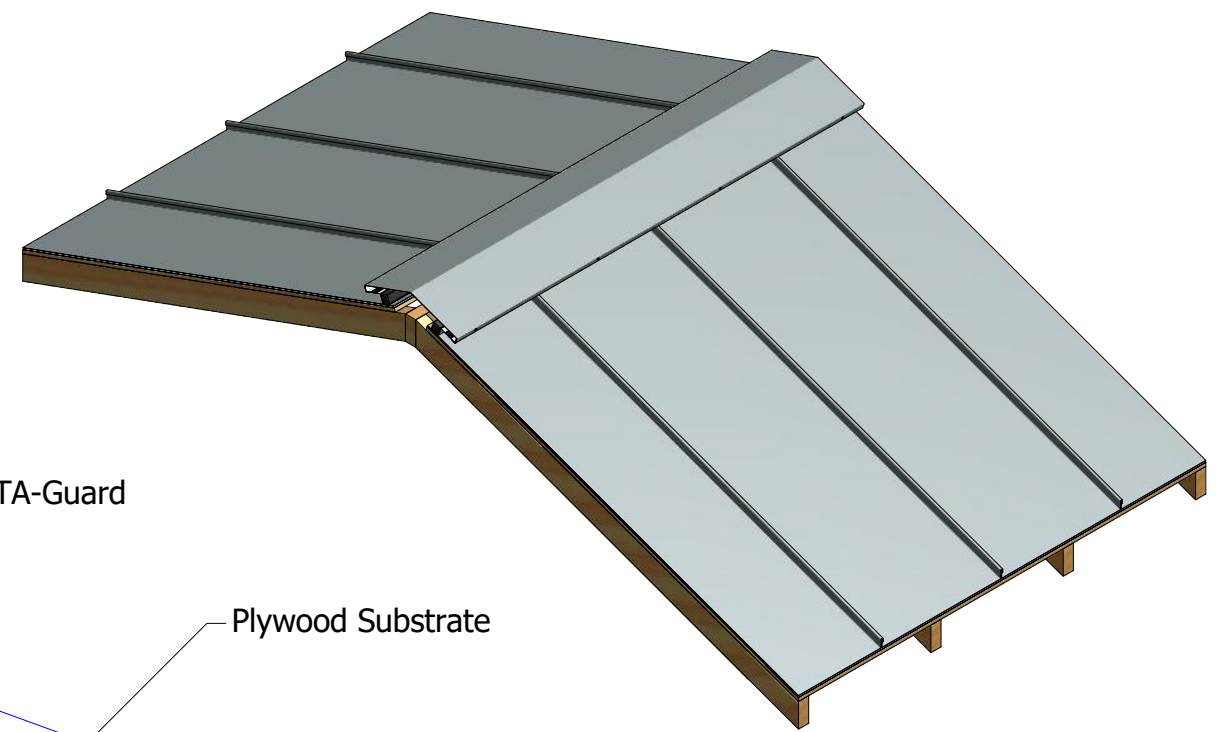
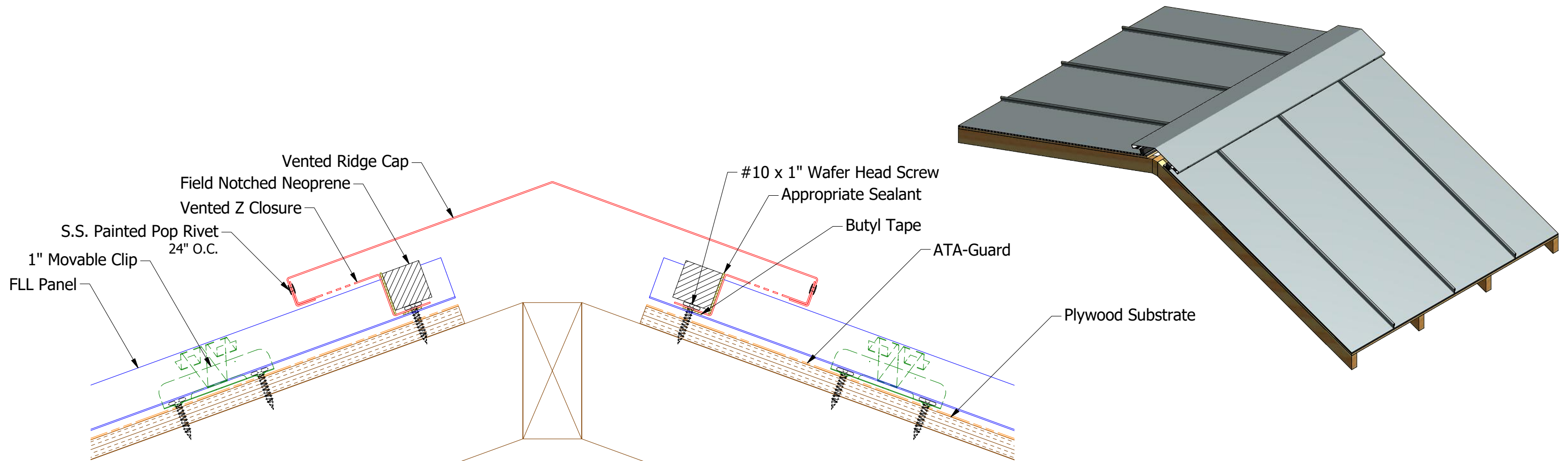
FLA975-Joggle Cleat

Note: * denotes color side.



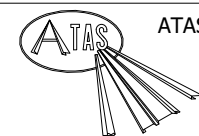
ATAS INTERNATIONAL, INC
 Allentown PA
 610-395-8445
 Mesa AZ
 480-558-7210

REV. NO.		DATE		DESCRIPTION OF REVISION		BY	APP	TITLE	
2	5/29/2019	Updated Clip Information		AJZ	KRK	DWG. NO.		FLL Valley Detail	
01	6/19/18	Updating Grpahic and Dimensions		JC		DR		KRK	
MATERIAL		SH. SIZE		SCALE		DATE		9/30/2014	
		B		X:X					



Vented Ridge Cap

- FLA322-2:12 to 6:12 Slope
D1=7 1/4"
- FLA324-6:12 to 9:12 Slope
D1=8 1/4"
- FLA326-9:12 to 12:12 Slope
D1=9 1/4"



ATAS INTERNATIONAL, INC
Allentown PA
610-395-8445
Mesa AZ
480-558-7210

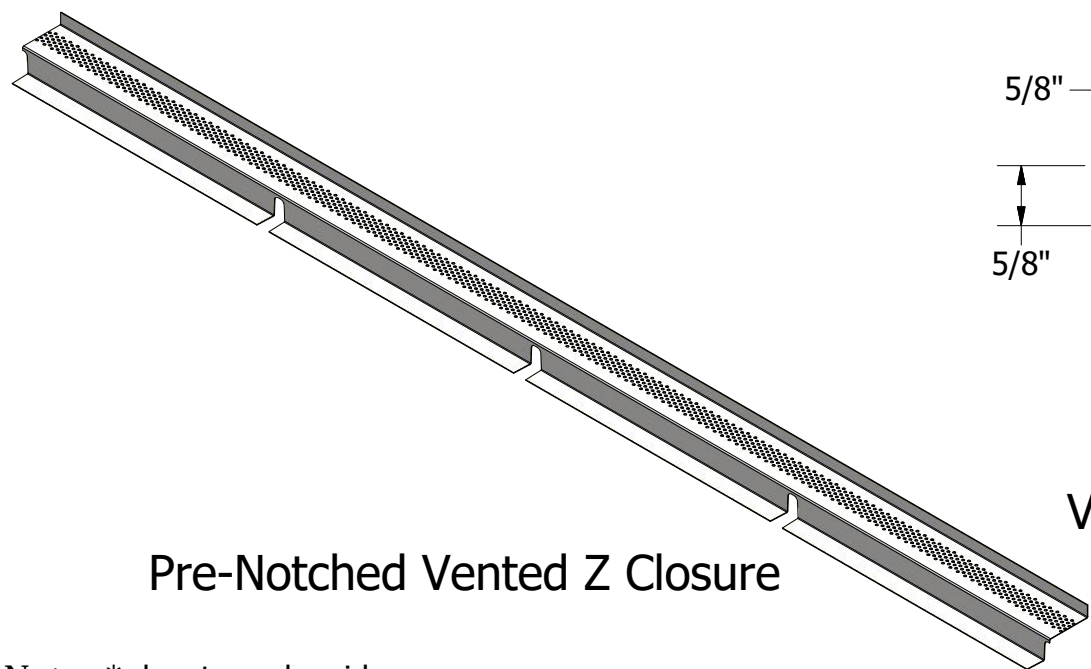
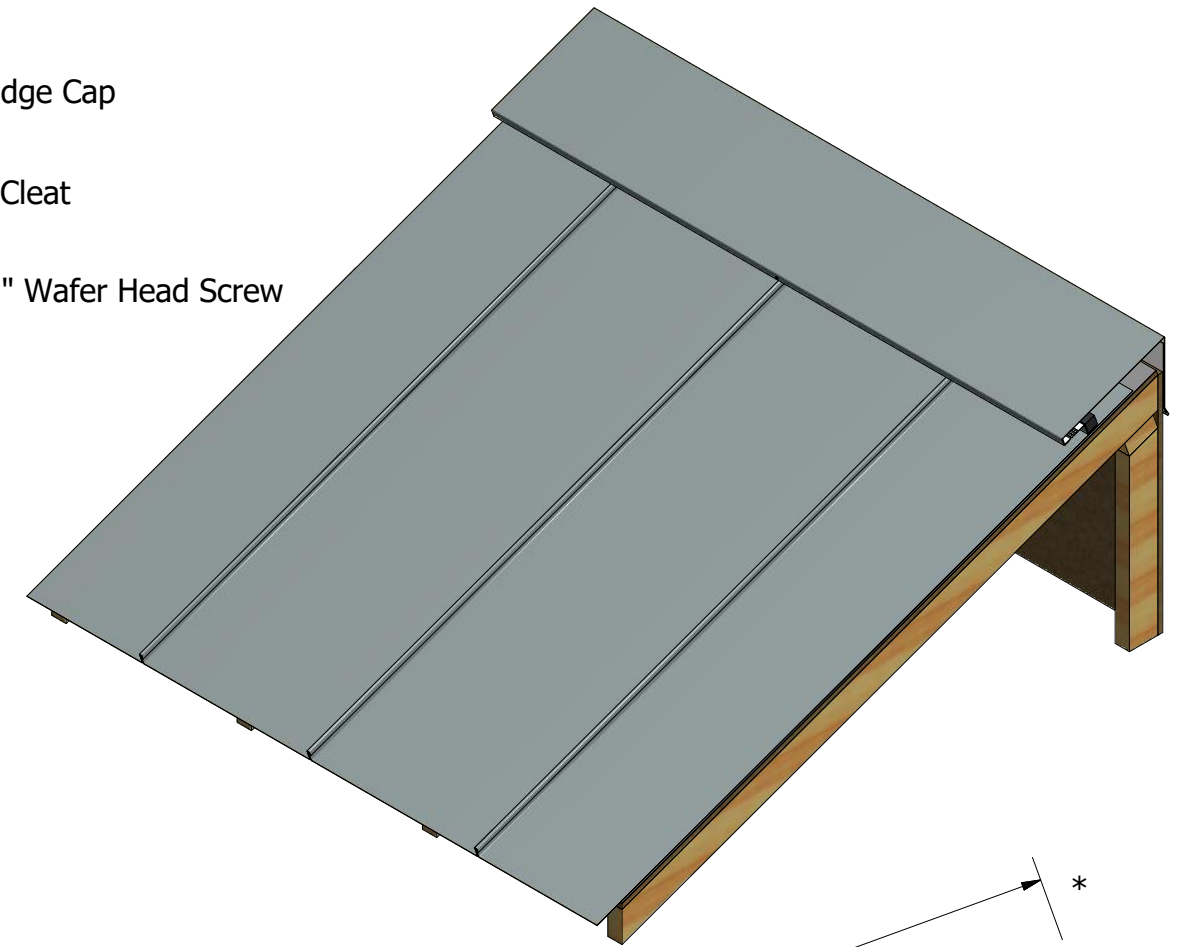
TITLE		FLL Vented Ridge Detail		
REV. NO.	DATE	DESCRIPTION OF REVISION	BY	APP
2	5/29/2019	Updated Clip Information	AJZ	KRK
1	6/18/2018	Updated Titles	MBP	
DWG. NO.		DR		DATE
		APP		9/30/2014
MATERIAL		SH. SIZE		SCALE
		B		X:X

Note: * denotes color side.

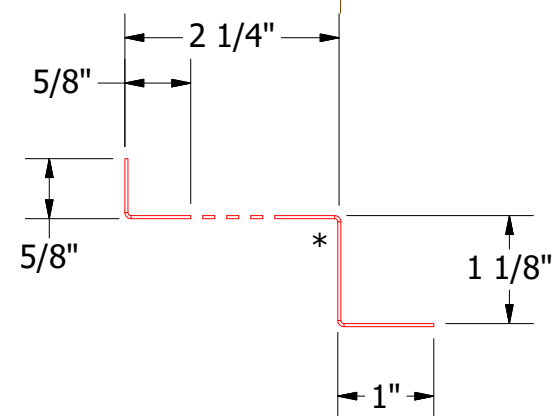
Note: Neoprene Closures are not required if Factory Pre Notched Vented Z Closures are utilized.

Field Notched Neoprene
Butyl Tape
Vented Z Closure
S.S. Painted Pop Rivet
Plywood
ATA-Guard
FLL Panel
1" Movable Clip

Shed Ridge Cap
Starter Cleat
#10 x 1" Wafer Head Screw



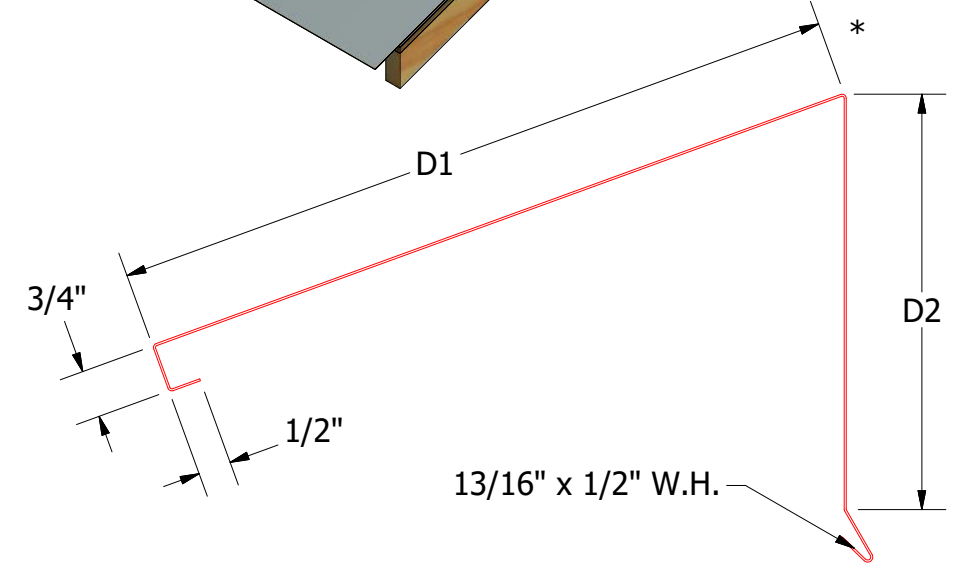
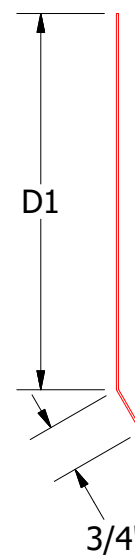
Pre-Notched Vented Z Closure



Vented Z Closure

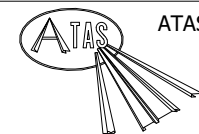
FLA369-Vented Shed Ridge Starter Cleat

2:12 to 6:12 Slope
D1=5.875"
6:12 to 9:12 Slope
D1=6.375"
9:12 to 12:12 Slope
D1=7.125"



FLA366-Vented Shed Ridge Cap

FLA362 - 2:12 to 6:12 Slope
D1=10.5", D2=6"
FLA364 - 6:12 to 9:12 Slope
D1 = 11.25", D2=6.5"
FLA366 - 9:12 to 12:12 Slope
D1 = 12.25", D2=7.25"



ATAS INTERNATIONAL, INC
Allentown PA
610-395-8445
Mesa AZ
480-558-7210

Note: * denotes color side.

Note: Neoprene Closures are not required if Factory Pre Notched Vented Z Closures are utilized.

REV. NO.		DATE	DESCRIPTION OF REVISION	BY	APP	TITLE		DR	DATE
2	5/29/2019		Updated Clip Information	AJZ	KRK	FLL Vented Shed Ridge Detail		DR	9/30/2014
1	6/18/2018		Updated Variable Dimensions and Titles	MBP				APP	DATE
						MATERIAL		SH. SIZE	SCALE
								B	X:X