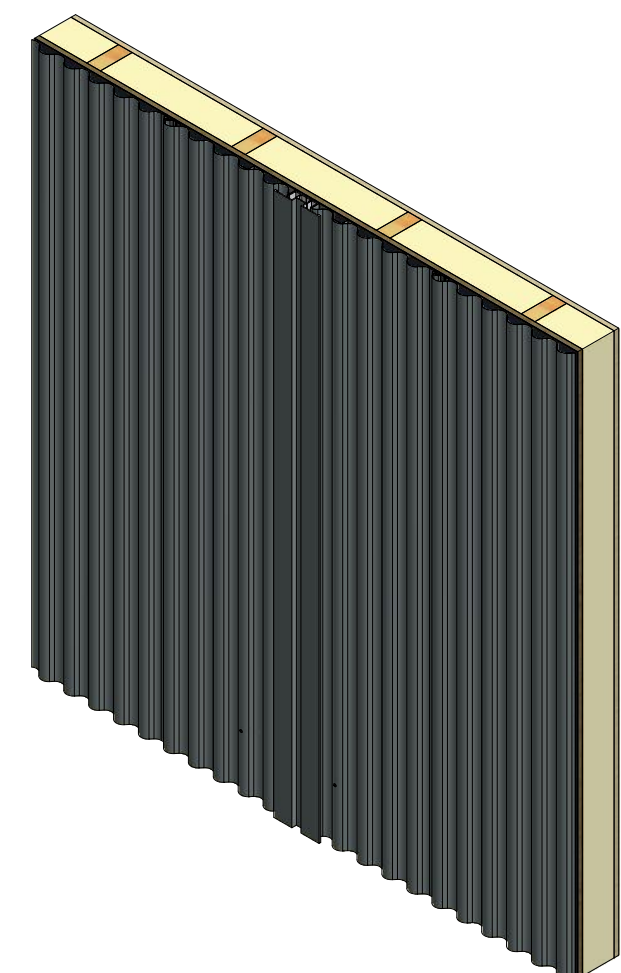
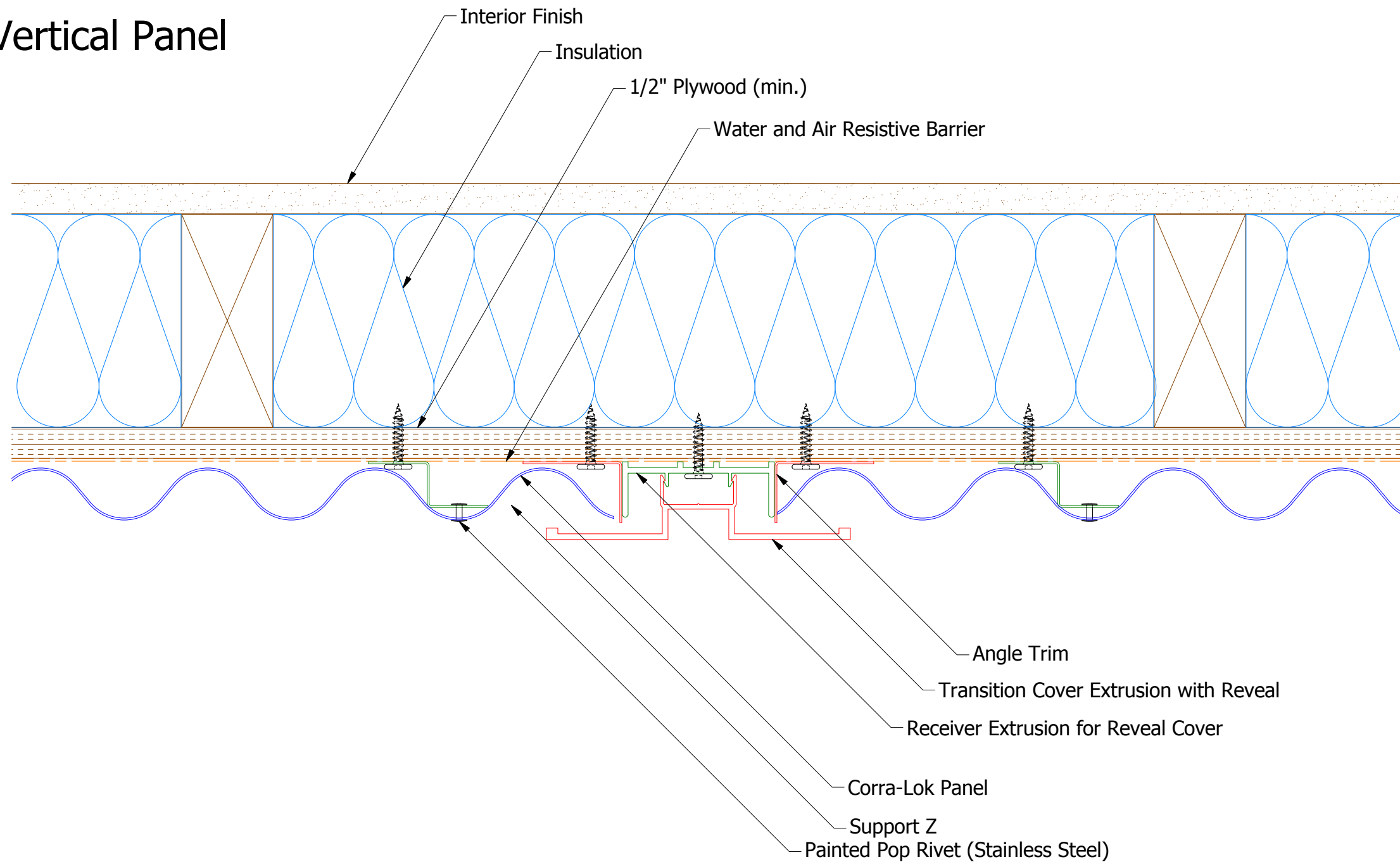
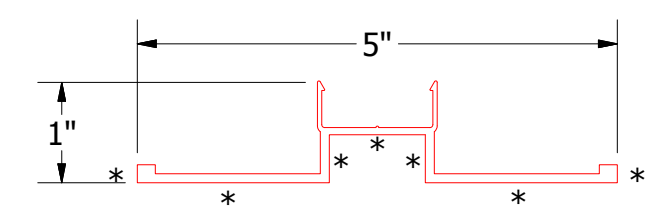


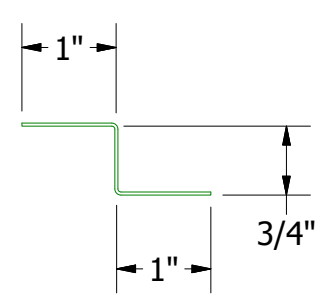
# Vertical Panel



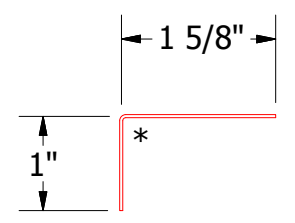
- Interior Finish
- Insulation
- 1/2" Plywood (min.)
- Water and Air Resistive Barrier
- Angle Trim
- Transition Cover Extrusion with Reveal
- Receiver Extrusion for Reveal Cover
- Corra-Lok Panel
- Support Z
- Painted Pop Rivet (Stainless Steel)



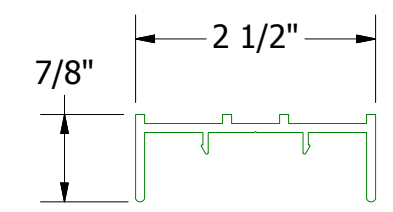
Transition Cover Extrusion with Reveal



Support Z




MCA680 - Angle Trim



Receiver Extrusion for Reveal Cover

**Note:** \* denotes color side.

REV. NO.	DATE	DESCRIPTION OF REVISION	BY	APP



**ATAS INTERNATIONAL, INC**  
 Allentown PA  
 610-395-8445  
 Mesa AZ  
 480-558-7210

TITLE **Corra-Lok Extruded Reveal Detail**

DWG. NO.	DR	DATE
	DMR	2/7/2019
MATERIAL	APP	DATE
SH. SIZE	B	SCALE
		X:X