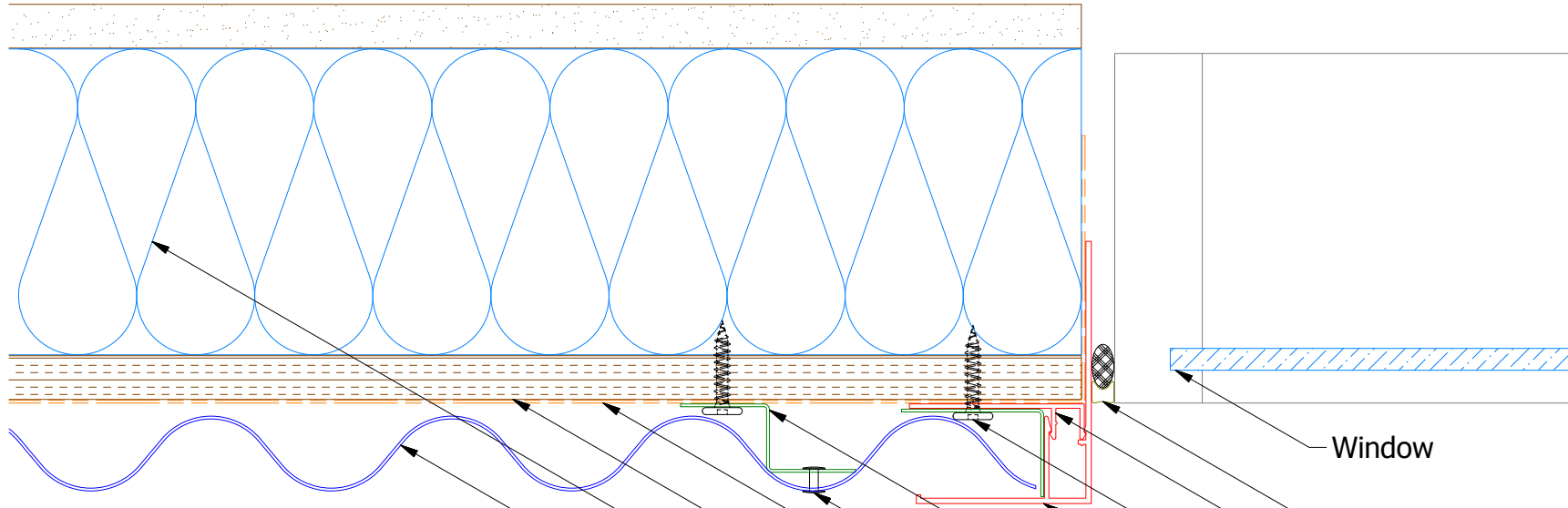
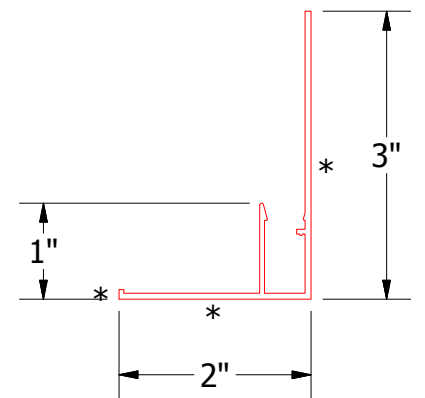
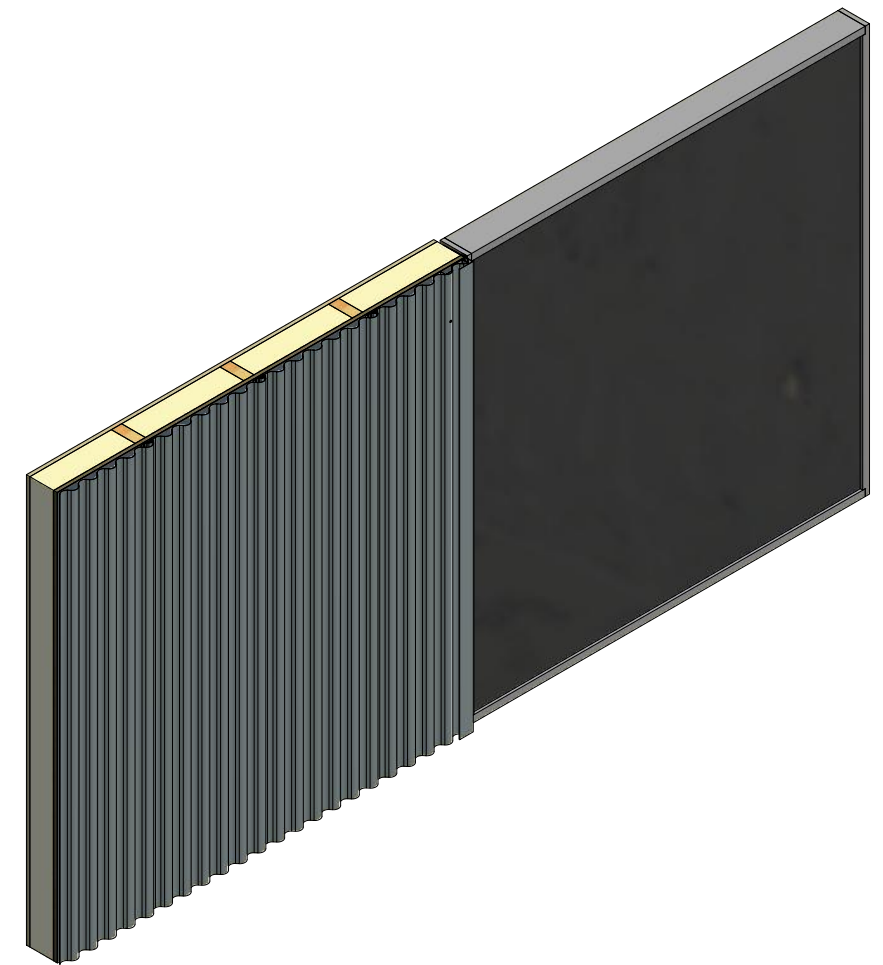


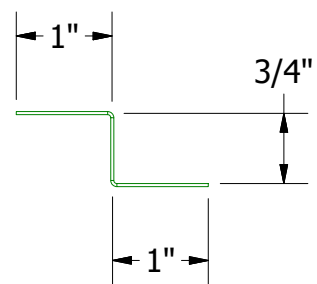
Vertical Panel



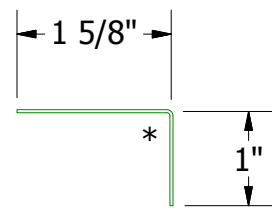
- Window
- Backer Rod and Sealant
- Receiver Extrusion for Jamb Cover
- #10 x 1" Wafer Head Fastener
- Jamb Cover
- Support Z
- Painted Pop Rivet (Stainless Steel)
- Water and Air Resistive Barrier
- 1/2" Plywood (min.)
- Insulation
- Corra-Lok Panel



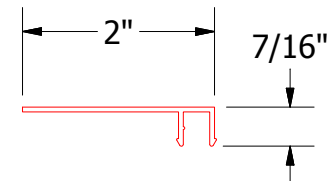
Jamb Cover



Support Z



Angle Trim



Receiver Extrusion for Jamb Cover

Note: * denotes color side.

ATAS ATAS INTERNATIONAL, INC
 Allentown PA
 610-395-8445
 Mesa AZ
 480-558-7210

TITLE: Corra-Lok Extruded Jamb Detail

DWG. NO.	DR	DMR	DATE
	APP		2/8/2019
MATERIAL	SH. SIZE	B	SCALE
			X:X

REV. NO.	DATE	DESCRIPTION OF REVISION	BY	APP