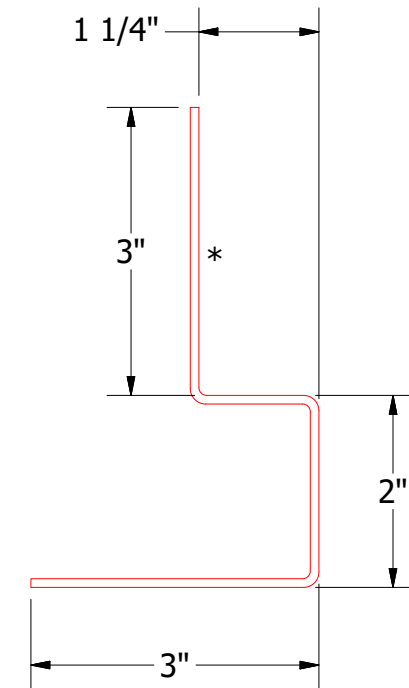
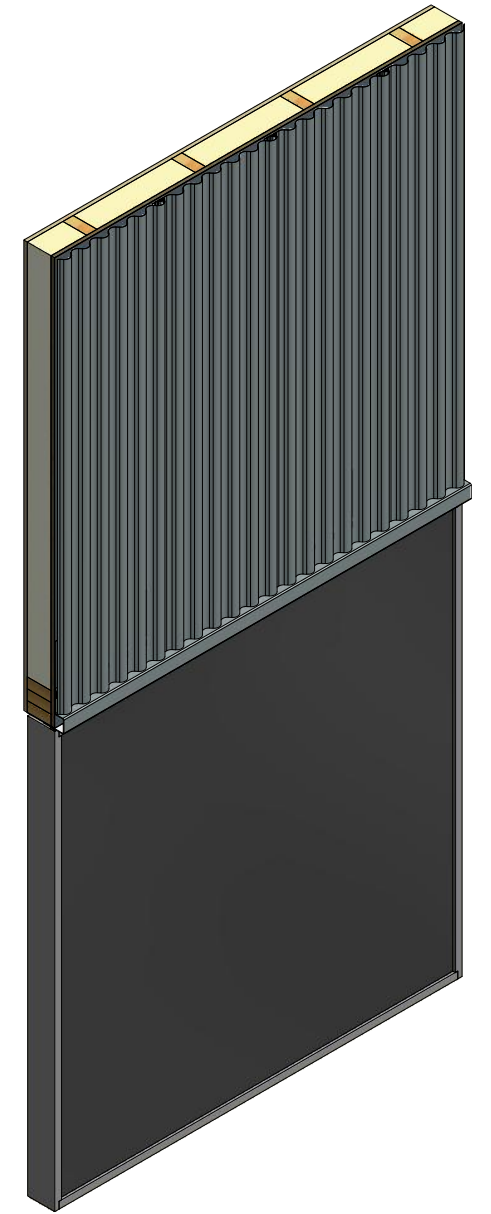
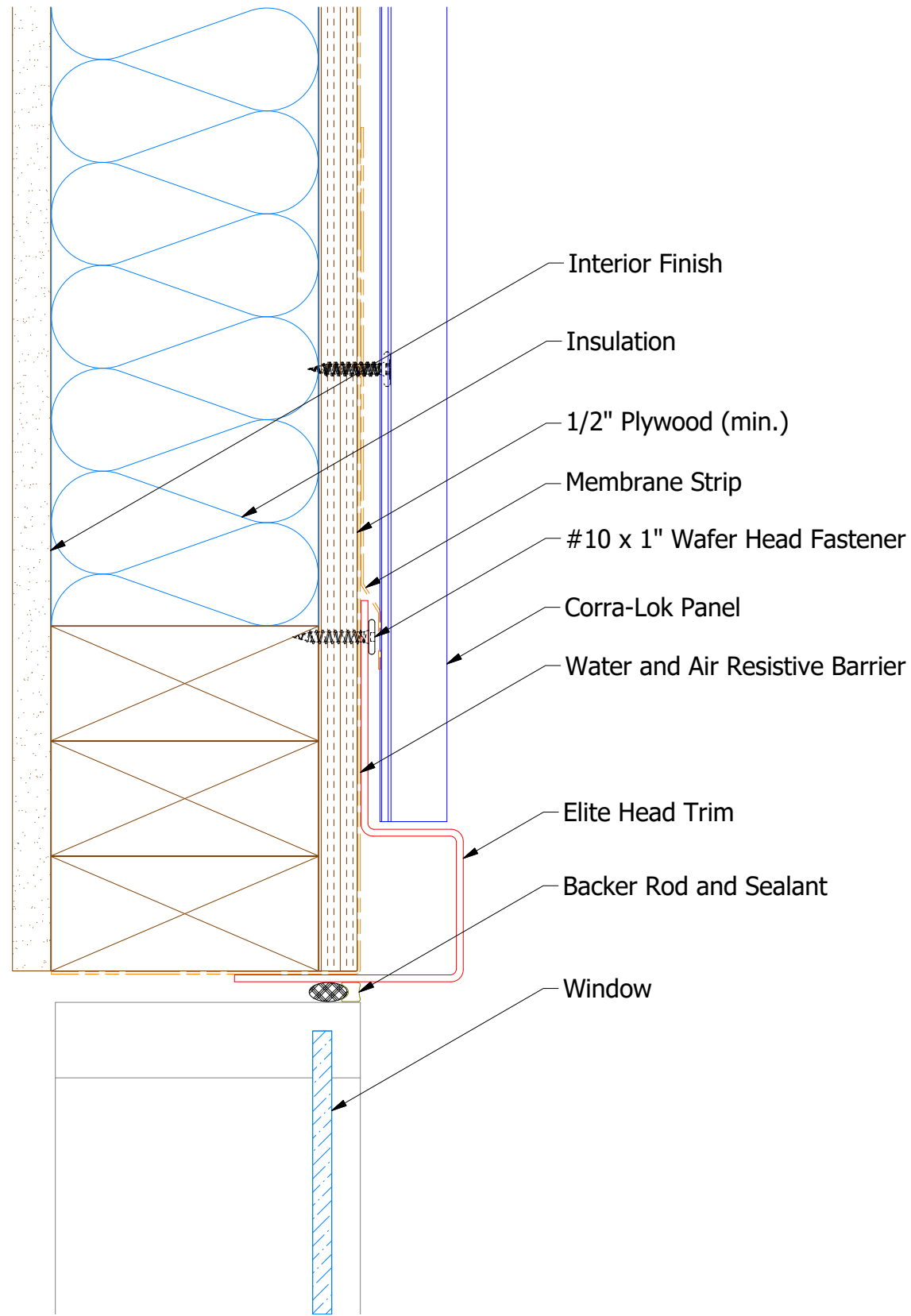


Vertical Panel



Elite Head Trim

Note: * denotes color side.

| | |
|---|---|
|  ATAS INTERNATIONAL, INC Allentown PA 610-395-8445 Mesa AZ 480-558-7210 | |
| TITLE Corra-Lok Elite Head Detail | |
| DWG. NO. | DR DMR DATE 2/1/2019 |
| 1 | 3/2/20 Replaced Support Z with Corra-Lok Profiled Support Z DMR |
| REV. NO. | DATE DESCRIPTION OF REVISION BY APP |
| | MATERIAL |
| SH. SIZE | B SCALE X:X |

| | | | |
|--|--|--|--|
| | | | |
| | | | |
| | | | |
| | | | |