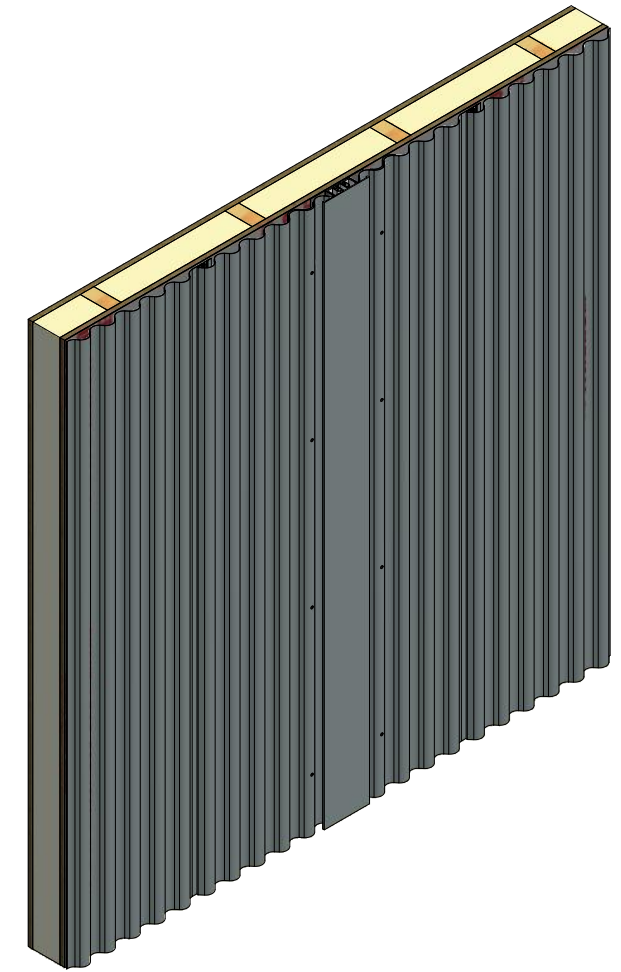
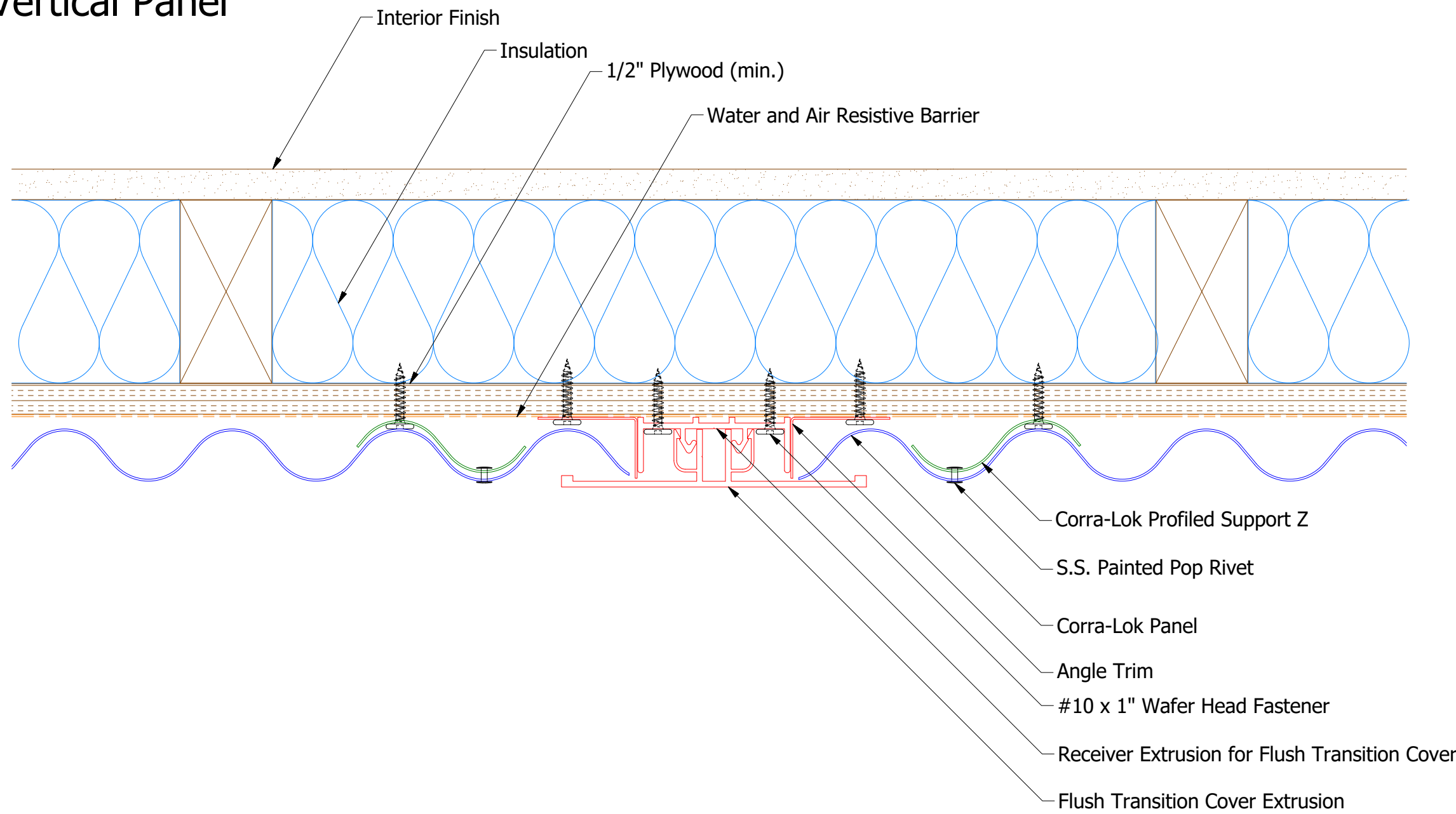
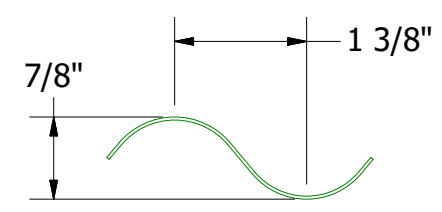


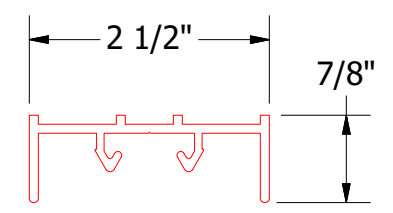
Vertical Panel



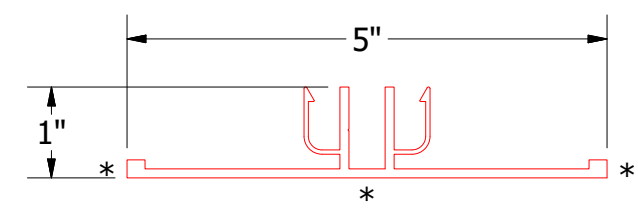
- Corra-Lok Profiled Support Z
- S.S. Painted Pop Rivet
- Corra-Lok Panel
- Angle Trim
- #10 x 1" Wafer Head Fastener
- Receiver Extrusion for Flush Transition Cover
- Flush Transition Cover Extrusion



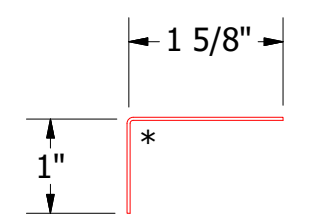
MCA682
Corra-Lok Profiled Support Z



MAY902 - Receiver Extrusion for Flush Transition Cover



MAY102 - Flush Transition Cover Extrusion



MCA680 - Angle Trim

Note: * denotes color side.

				ATAS INTERNATIONAL, INC Allentown PA 610-395-8445 Mesa AZ 480-558-7210	
TITLE Corra-Lok Extruded Flush Detail					
DWG. NO.				DR	DATE
				DMR	2/7/2019
1	3/2/20	Replaced Support Z with Corra-Lok Profiled Support Z	DMR	APP	DATE
REV. NO.	DATE	DESCRIPTION OF REVISION	BY	APP	SCALE
					B X:X