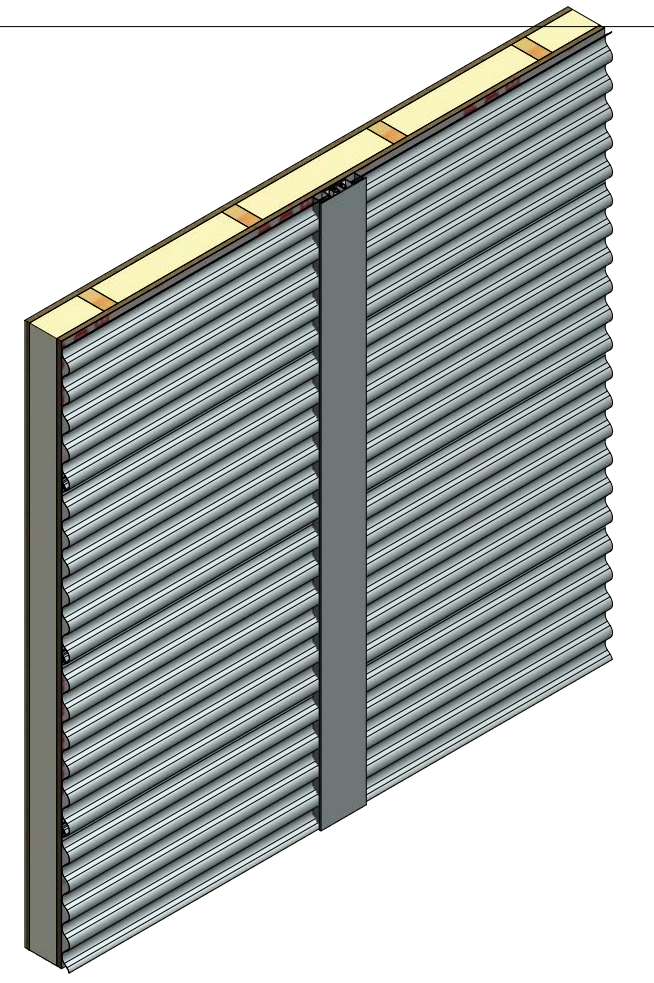
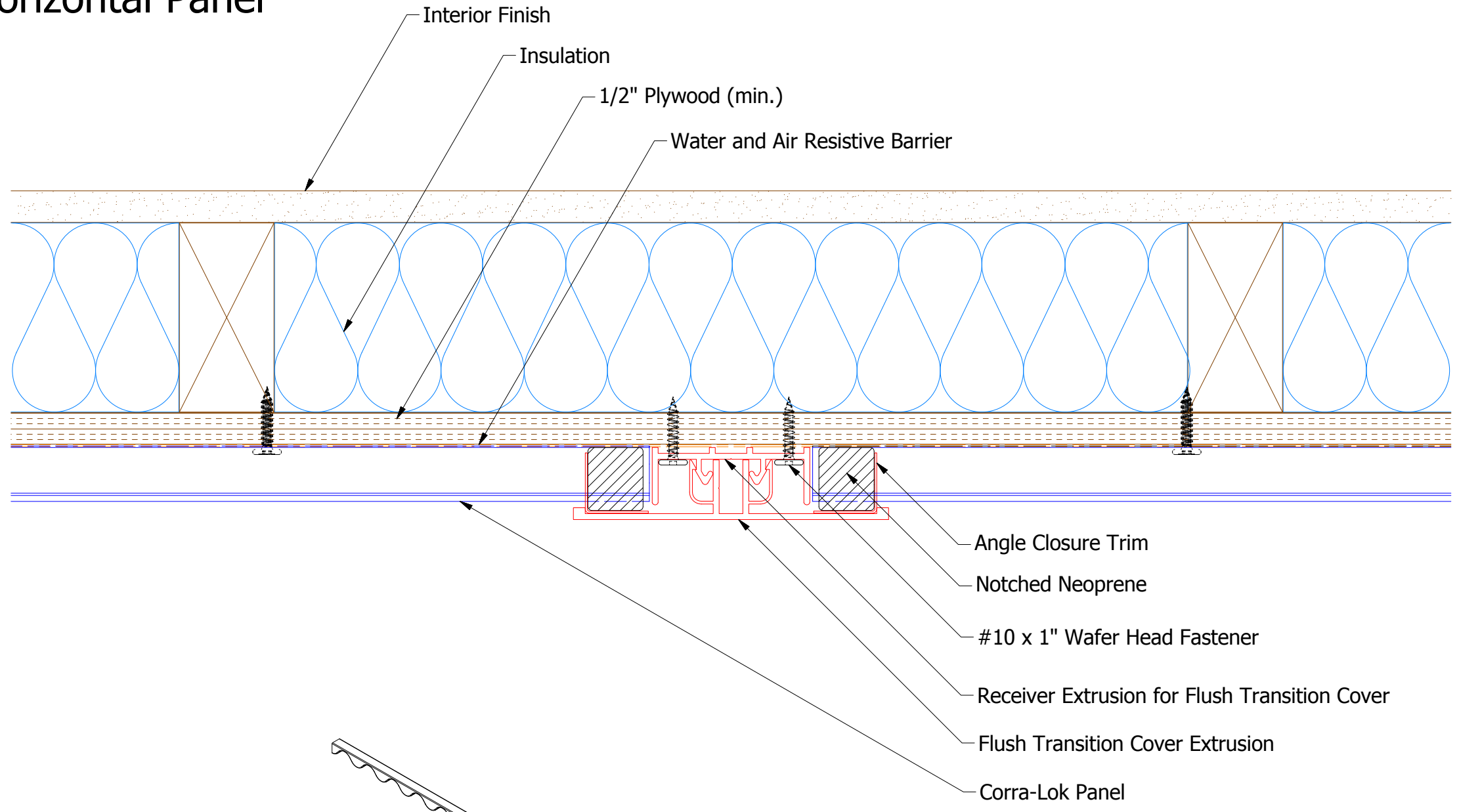
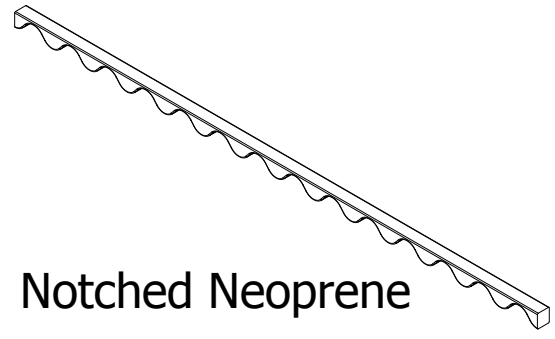


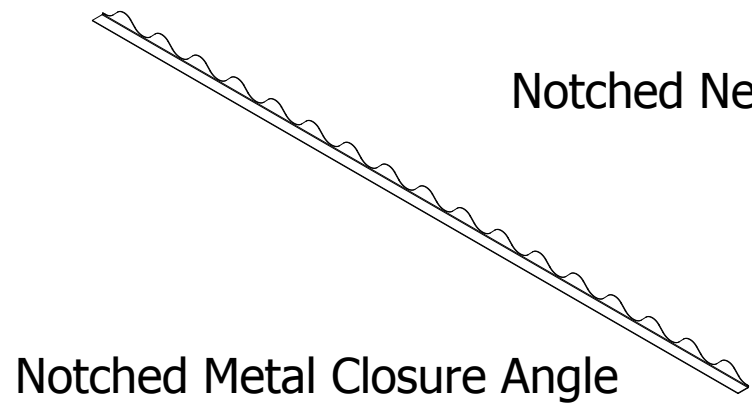
Horizontal Panel



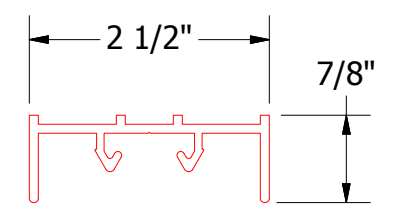
- Angle Closure Trim
- Notched Neoprene
- #10 x 1" Wafer Head Fastener
- Receiver Extrusion for Flush Transition Cover
- Flush Transition Cover Extrusion
- Corra-Lok Panel



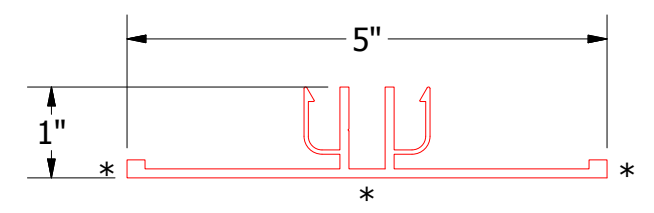
Notched Neoprene



Notched Metal Closure Angle



MAY902 - Receiver Extrusion for Flush Transition Cover



MAY102 - Flush Transition Cover Extrusion

Note: * denotes color side.

ATAS ATAS INTERNATIONAL, INC
 Allentown PA
 610-395-8445
 Mesa AZ
 480-558-7210

TITLE Corra-Lok Extruded Flush Detail			
DWG. NO.	DR	DATE	2/7/2019
	DMR		
MATERIAL	APP	DATE	
	SH. SIZE	B	SCALE X:X

REV. NO.	DATE	DESCRIPTION OF REVISION	BY	APP