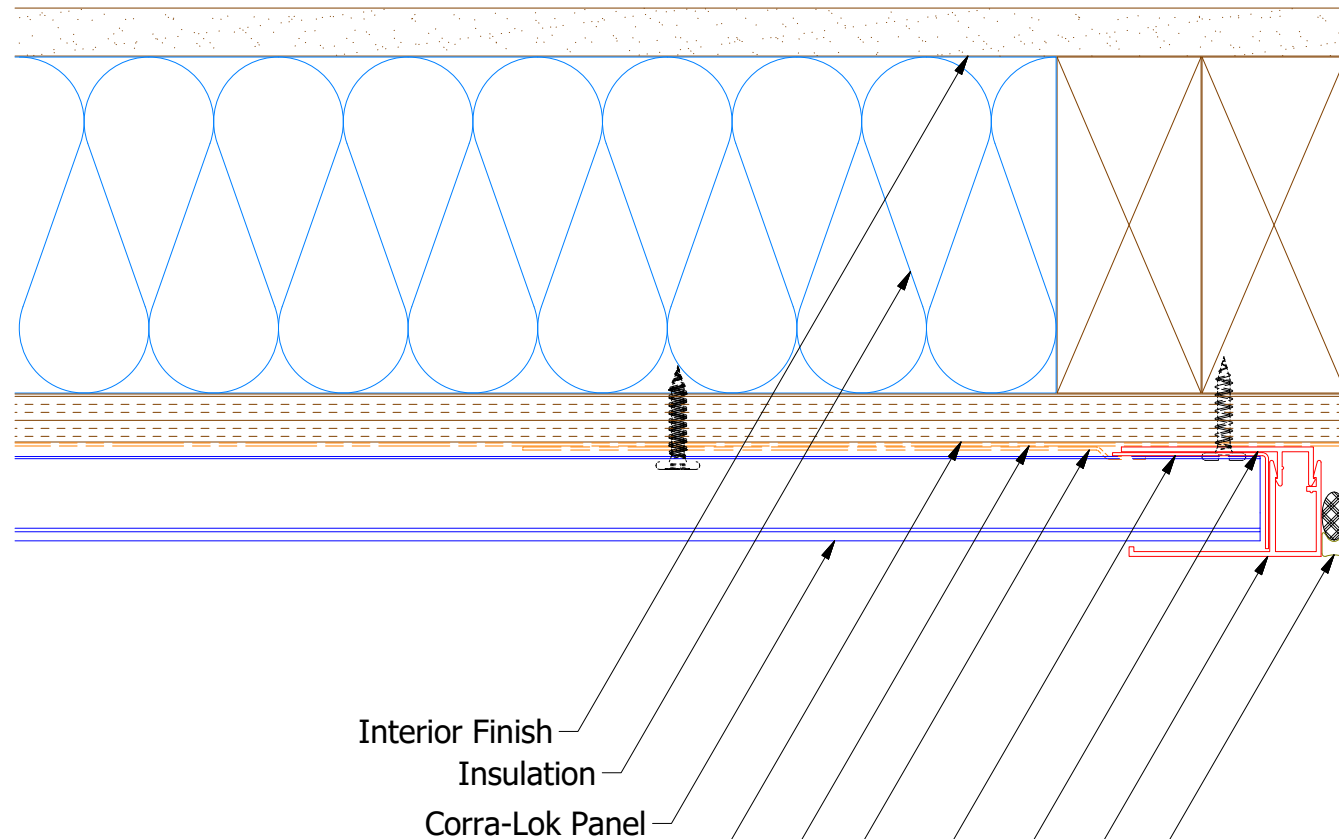
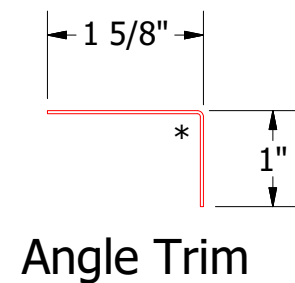
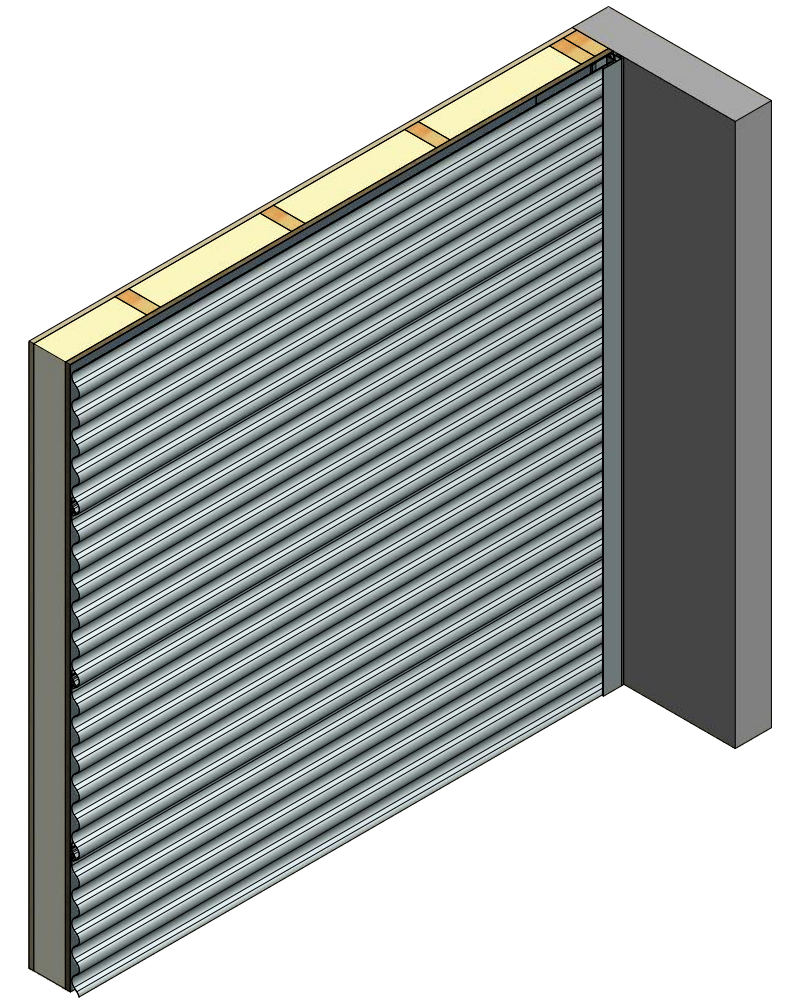


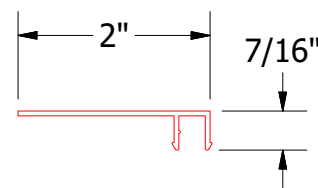
Horizontal Panel



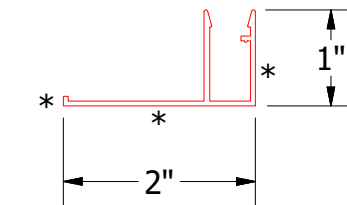
- Interior Finish
- Insulation
- Corra-Lok Panel
- 1/2" Plywood (min.)
- Water and Air Resistive Barrier
- Membrane Strip
- Angle Trim
- Receiver for Channel Cover
- Channel Cover
- Backer Rod and Sealant



Angle Trim



Receiver for Channel Cover



Channel Cover

Note: * denotes color side.

ATAS ATAS INTERNATIONAL, INC
 Allentown PA
 610-395-8445
 Mesa AZ
 480-558-7210

TITLE: Rigid Wall II Extruded Endwall Detail

REV. NO.	DATE	DESCRIPTION OF REVISION	BY	APP	DWG. NO.	DR	DATE
2	9/23/2021	Removed Notched Neoprene and added new trim	JJP			JJP	9/23/2021
1	2/28/20	Replaced Support Z with Corra-Lok Profiled Support Z	DMR				

MATERIAL: SH. SIZE B SCALE X:X