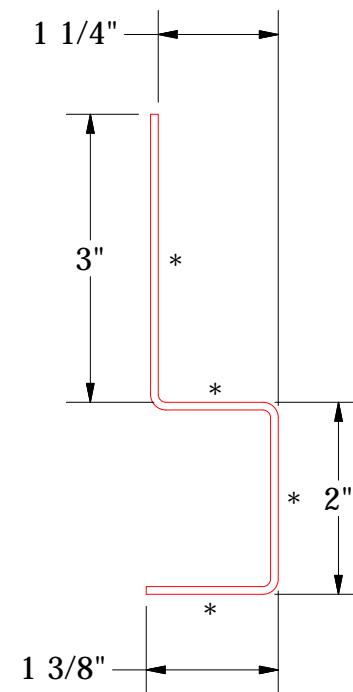
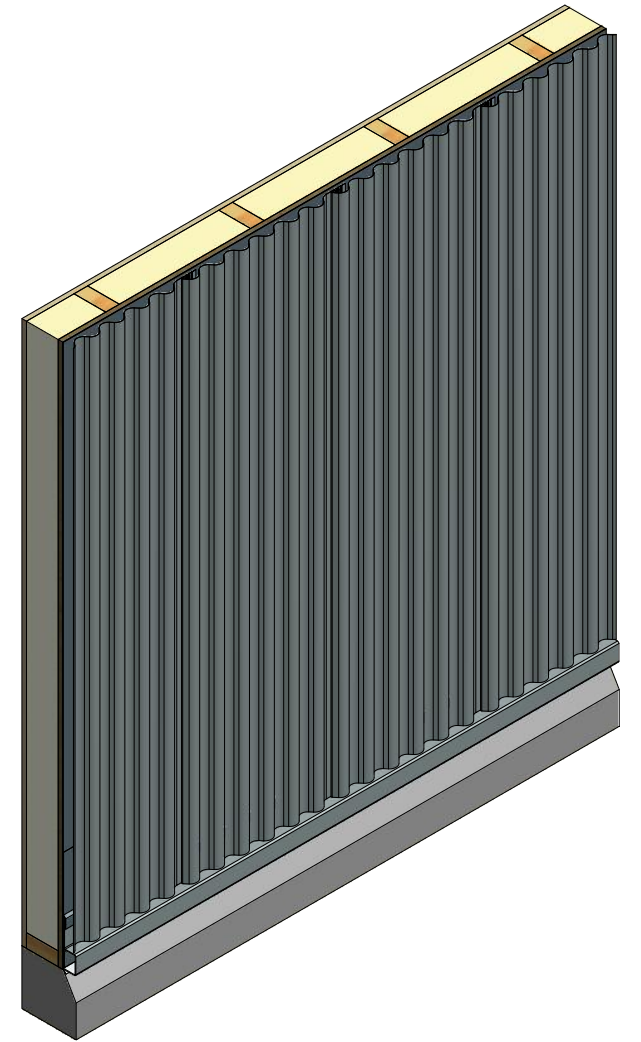
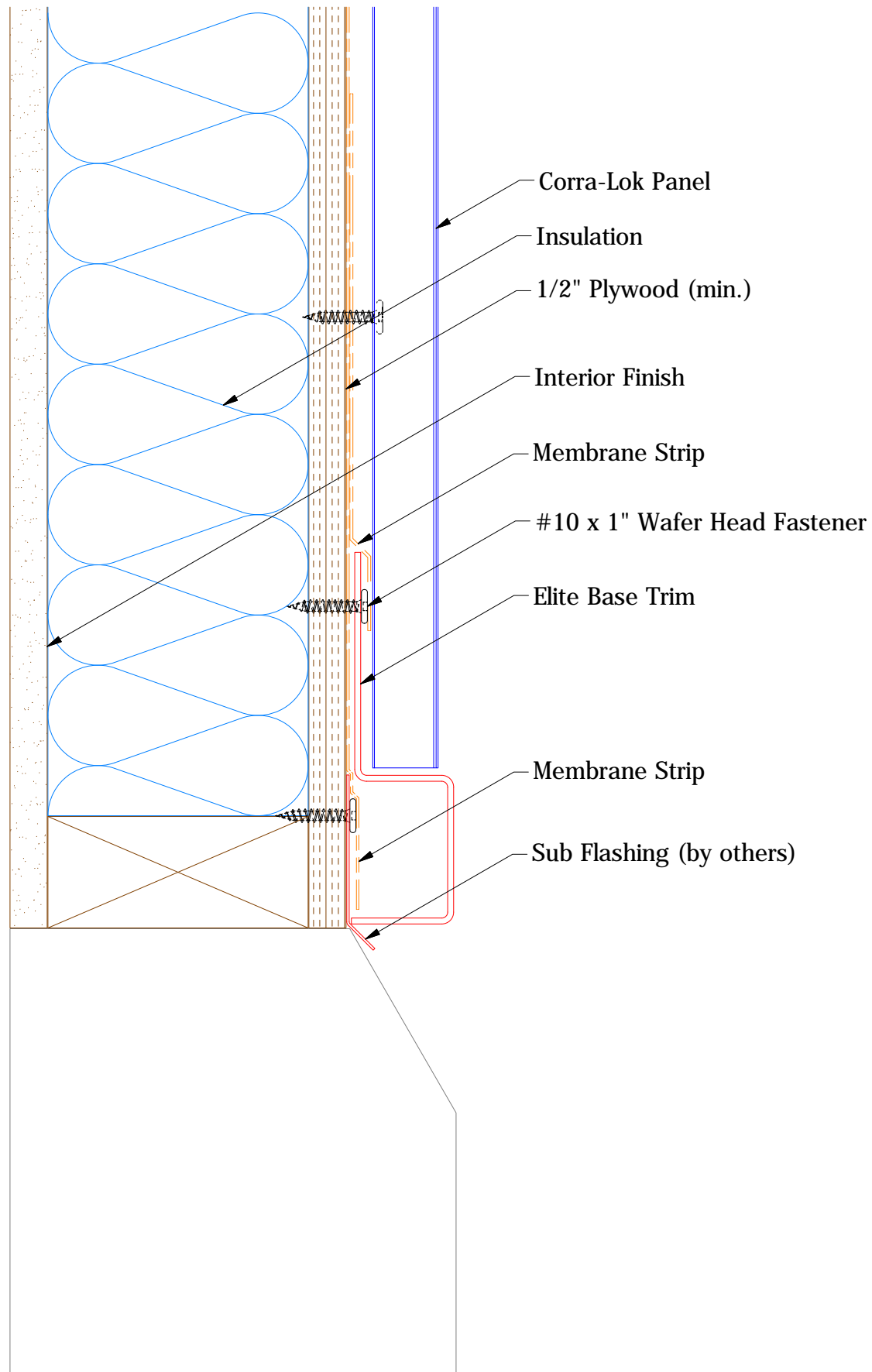
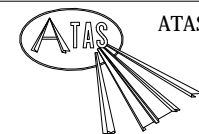


Vertical Panel



Elite Base Trim

Note: * denotes color side.



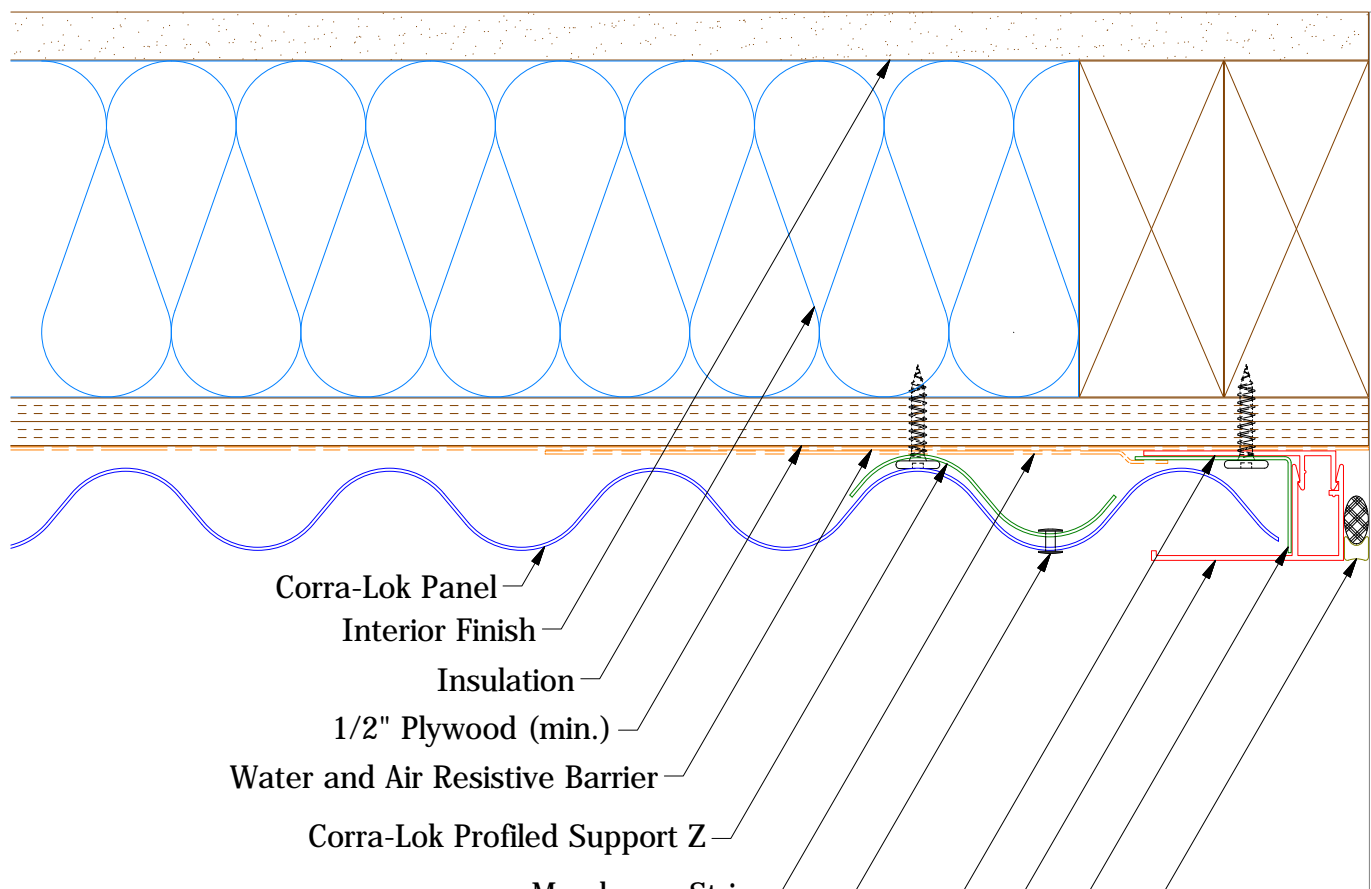
ATAS INTERNATIONAL, INC
 Allentown PA
 610-395-8445
 Mesa AZ
 480-558-7210

Corra-Lok Elite Base Detail

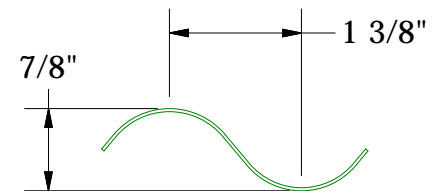
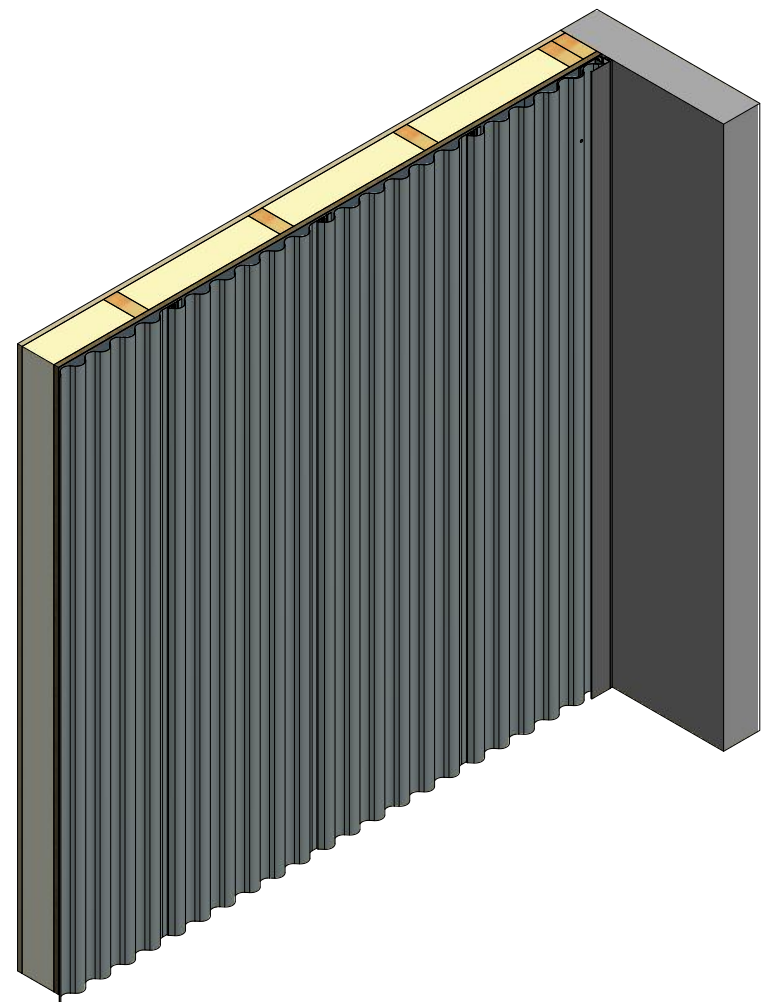
REV. NO.		DATE		DESCRIPTION OF REVISION		BY	APP	TITLE	
								Corra-Lok Elite Base Detail	
								DWG. NO.	DR
								APP	DMR
								MATERIAL	DATE
								SH. SIZE	SCALE
								B	X:X

DATE 1/25/2019

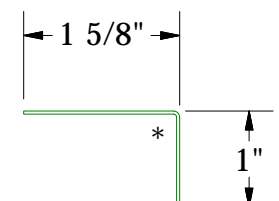
Vertical Panel



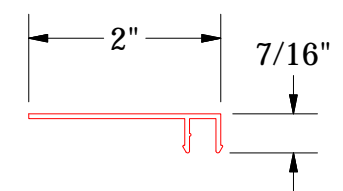
- Corra-Lok Panel
- Interior Finish
- Insulation
- 1/2" Plywood (min.)
- Water and Air Resistive Barrier
- Corra-Lok Profiled Support Z
- Membrane Strip
- S.S. Painted Pop Rivet
- Receiver for Channel Cover
- Channel Cover
- Angle Trim
- Backer Rod and Sealant



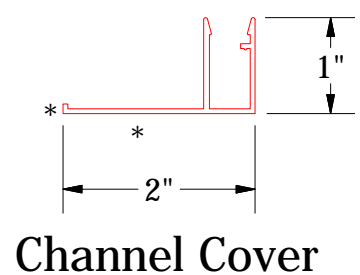
MCA682
Corra-Lok Profiled Support Z



Angle Trim




Receiver for Channel Cover



Channel Cover

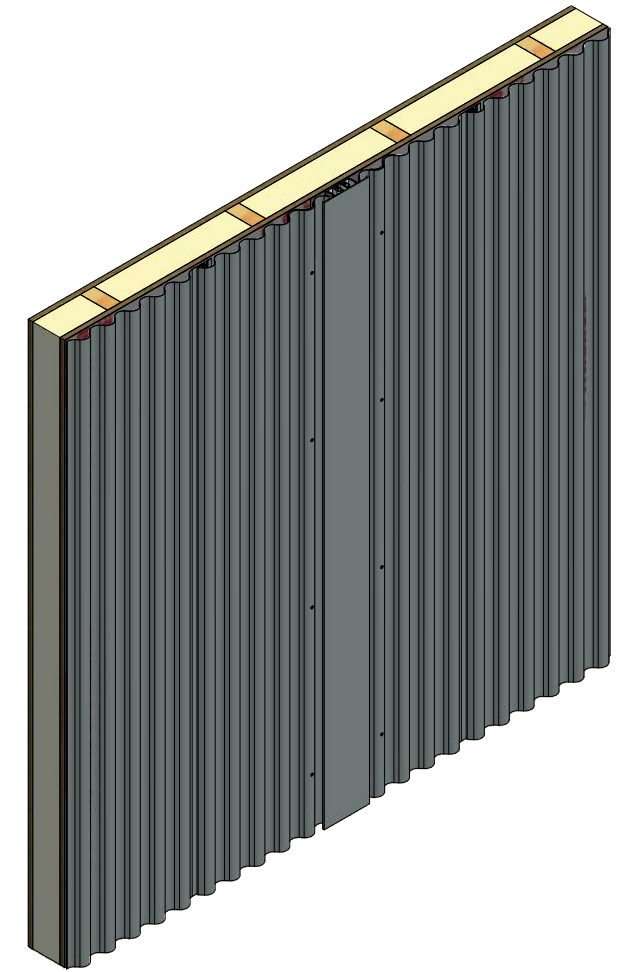
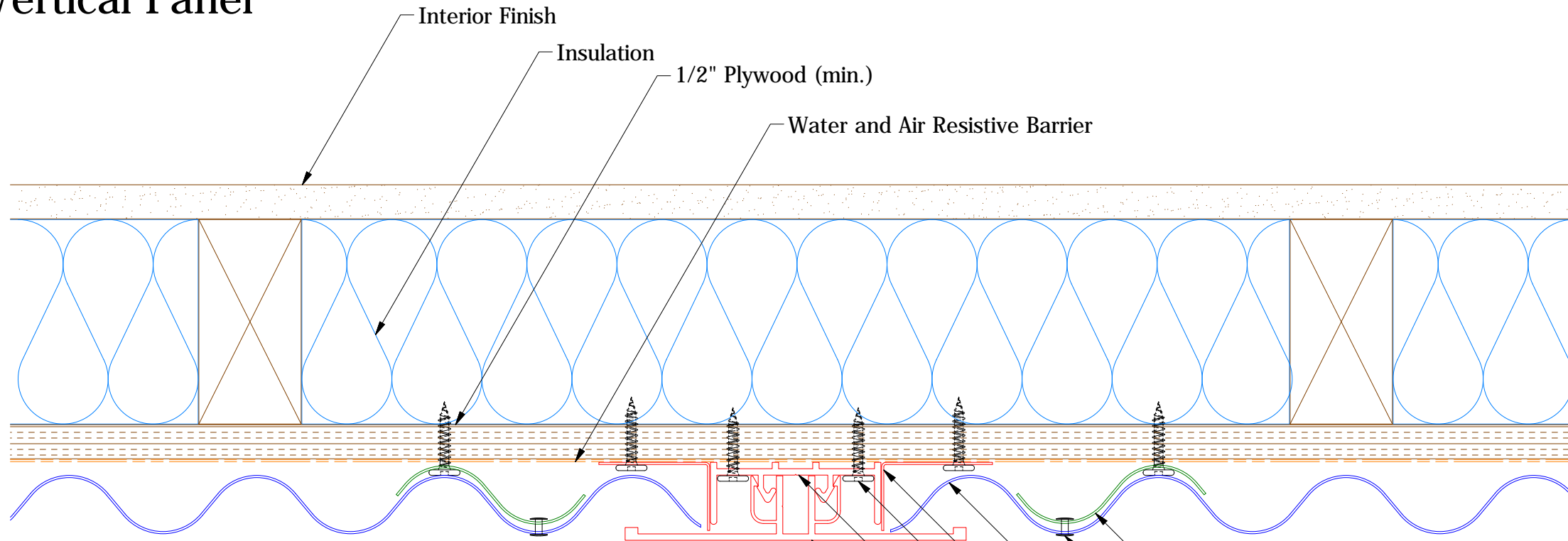
Note: * denotes color side.

Receiver for Channel Cover

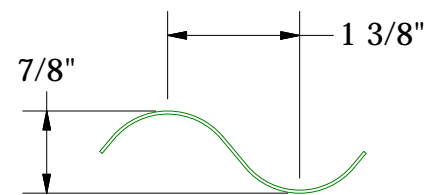
 ATAS INTERNATIONAL, INC Allentown PA 610-395-8445 Mesa AZ 480-558-7210			TITLE Rigid Wall II Extruded Endwall Detail	
			DWG. NO.	DR
1	2/28/20	Replaced Support Z with Corra-Lok Profiled Support Z	DMR	APP
REV. NO.	DATE	DESCRIPTION OF REVISION	BY	APP
			MATERIAL	
			SH. SIZE	B
			SCALE	X:X

1	2/28/20	Replaced Support Z with Corra-Lok Profiled Support Z	DMR	APP
REV. NO.	DATE	DESCRIPTION OF REVISION	BY	APP

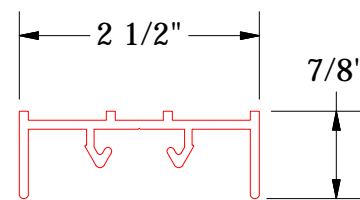
Vertical Panel



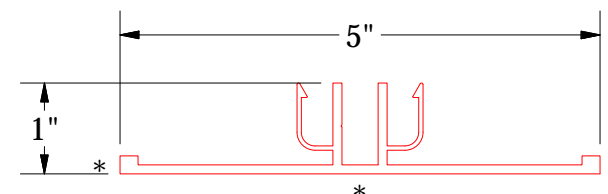
- Corra-Lok Profiled Support Z
- S.S. Painted Pop Rivet
- Corra-Lok Panel
- Angle Trim
- #10 x 1" Wafer Head Fastener
- Receiver Extrusion for Flush Transition Cover
- Flush Transition Cover Extrusion



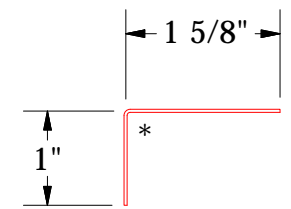
MCA682
Corra-Lok Profiled Support Z



MAY902 - Receiver Extrusion for Flush Transition Cover

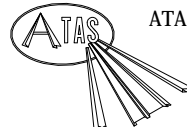


MAY102 - Flush Transition Cover Extrusion

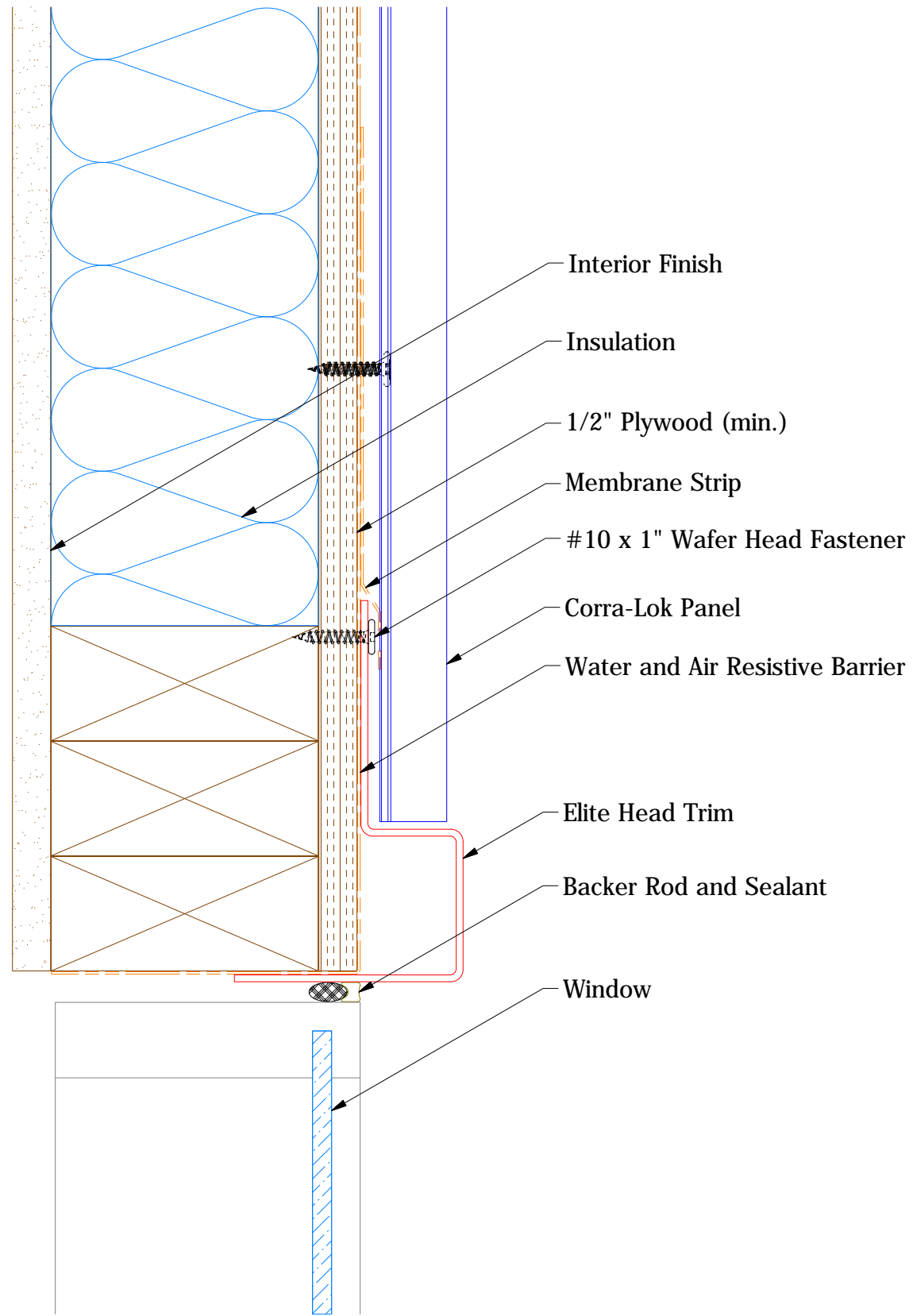


MCA680 - Angle Trim

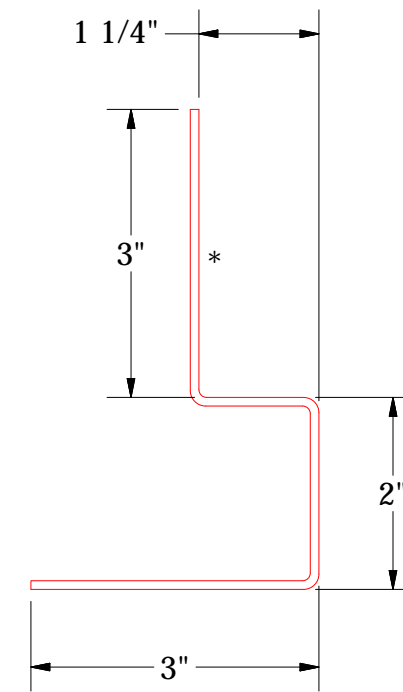
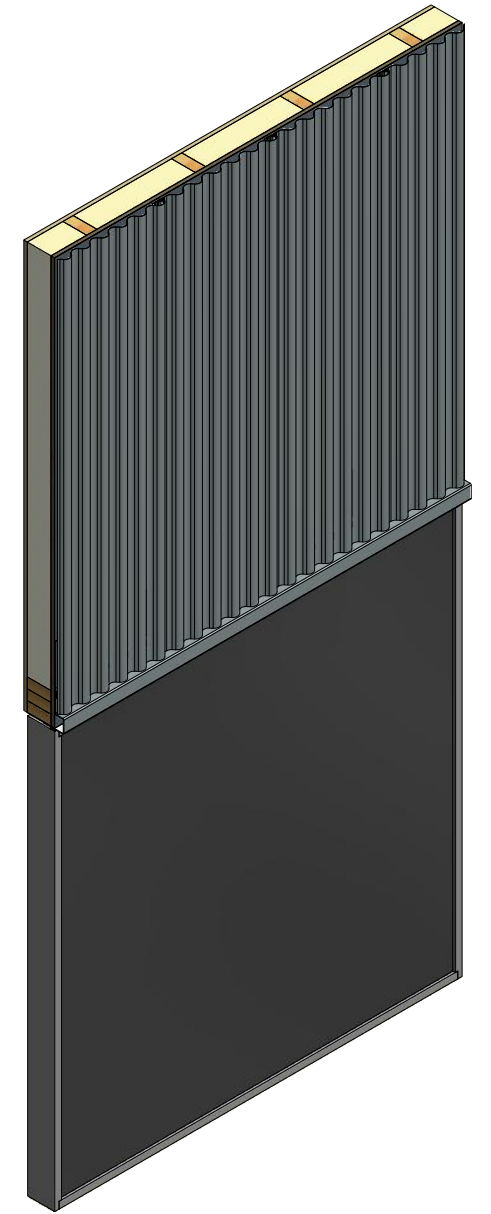
Note: * denotes color side.

				 ATAS INTERNATIONAL, INC Allentown PA 610-395-8445 Mesa AZ 480-558-7210	
TITLE Corra-Lok Extruded Flush Detail					
DWG. NO.		DR		DATE	
		DMR		2/7/2019	
REV. NO.		APP		DATE	
1		3/2/20			
		Replaced Support Z with Corra-Lok Profiled Support Z		DMR	
		DESCRIPTION OF REVISION		BY APP	
				SH. SIZE	
				B	
				SCALE	
				X:X	

Vertical Panel



Note: * denotes color side.



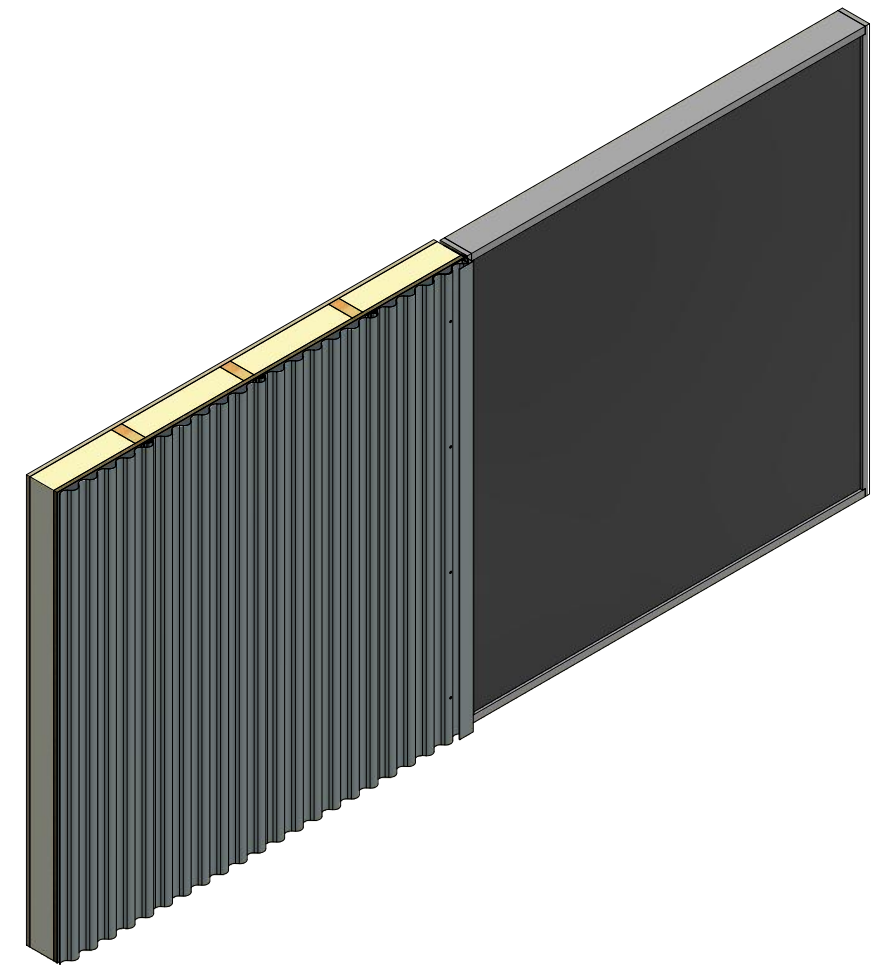
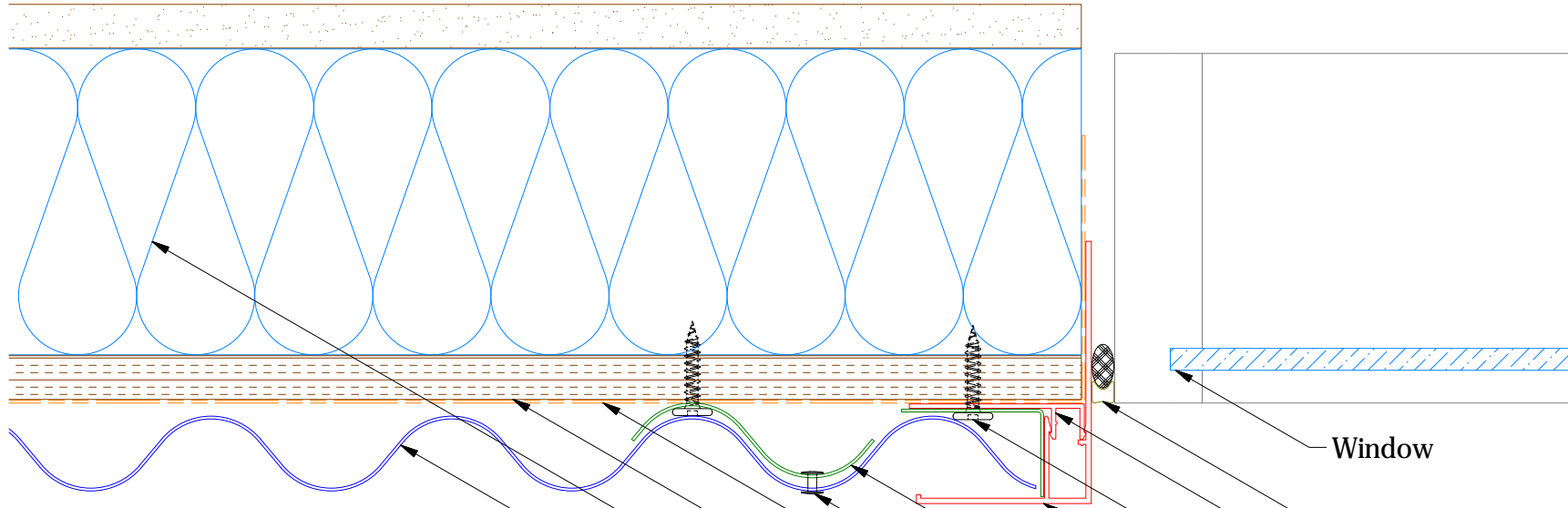
Elite Head Trim

ATAS ATAS INTERNATIONAL, INC
 Allentown PA
 610-395-8445
 Mesa AZ
 480-558-7210

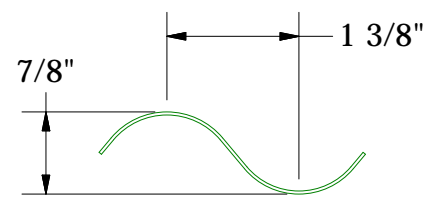
TITLE
Corra-Lok Elite Head Detail

					DWG. NO.	DR	DMR	DATE	2/1/2019
1	3/2/20	Replaced Support Z with Corra-Lok Profiled Support Z	DMR	APP	MATERIAL	SH. SIZE	B	SCALE	X:X
REV. NO.	DATE	DESCRIPTION OF REVISION	BY	APP					

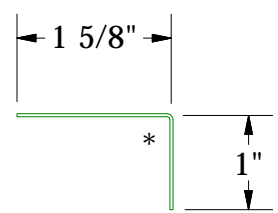
Vertical Panel



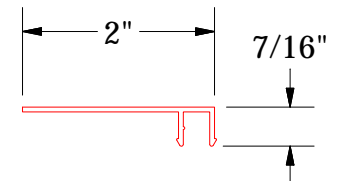
- Window
- Backer Rod and Sealant
- Receiver Extrusion for Jamb Cover
- #10 x 1" Wafer Head Fastener
- Jamb Cover
- Corra-Lok Profiled Support Z
- S.S. Painted Pop Rivet
- Water and Air Resistive Barrier
- 1/2" Plywood (min.)
- Insulation
- Corra-Lok Panel



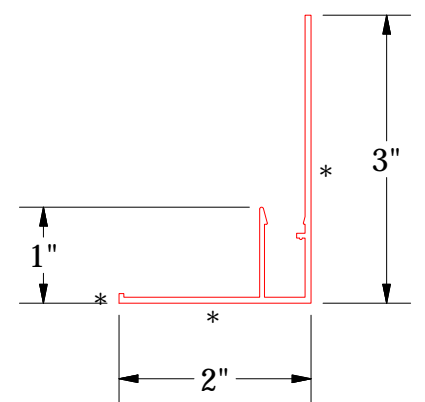
MCA682
Corra-Lok Profiled Support Z



Angle Trim



Receiver Extrusion for Jamb Cover



Jamb Cover

Note: * denotes color side.

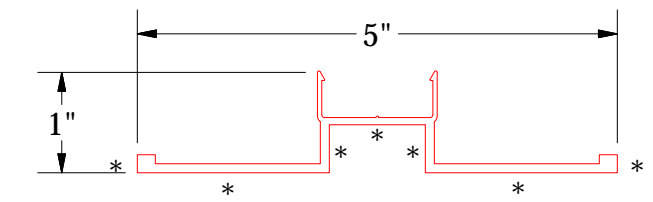
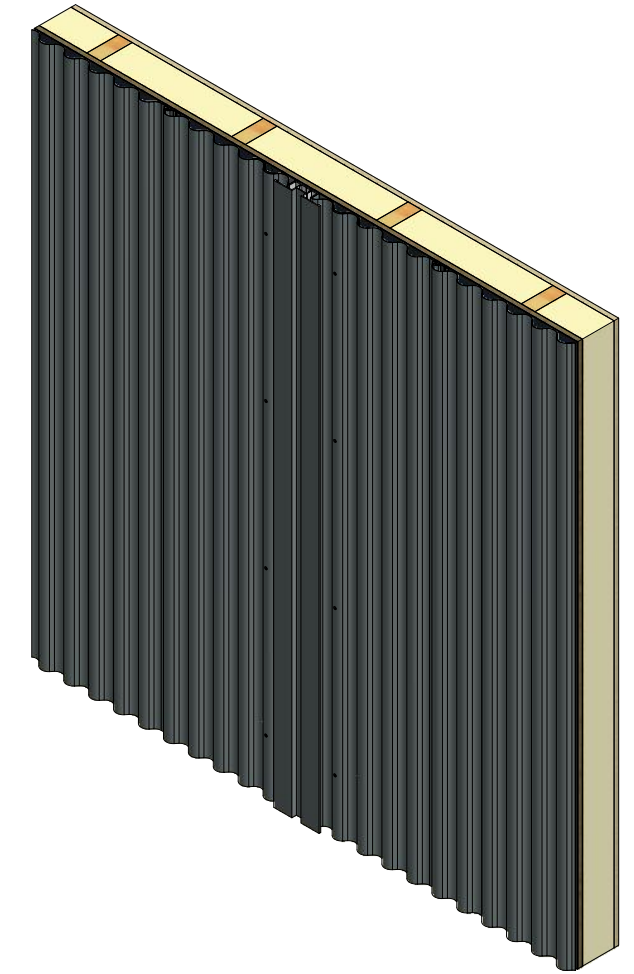
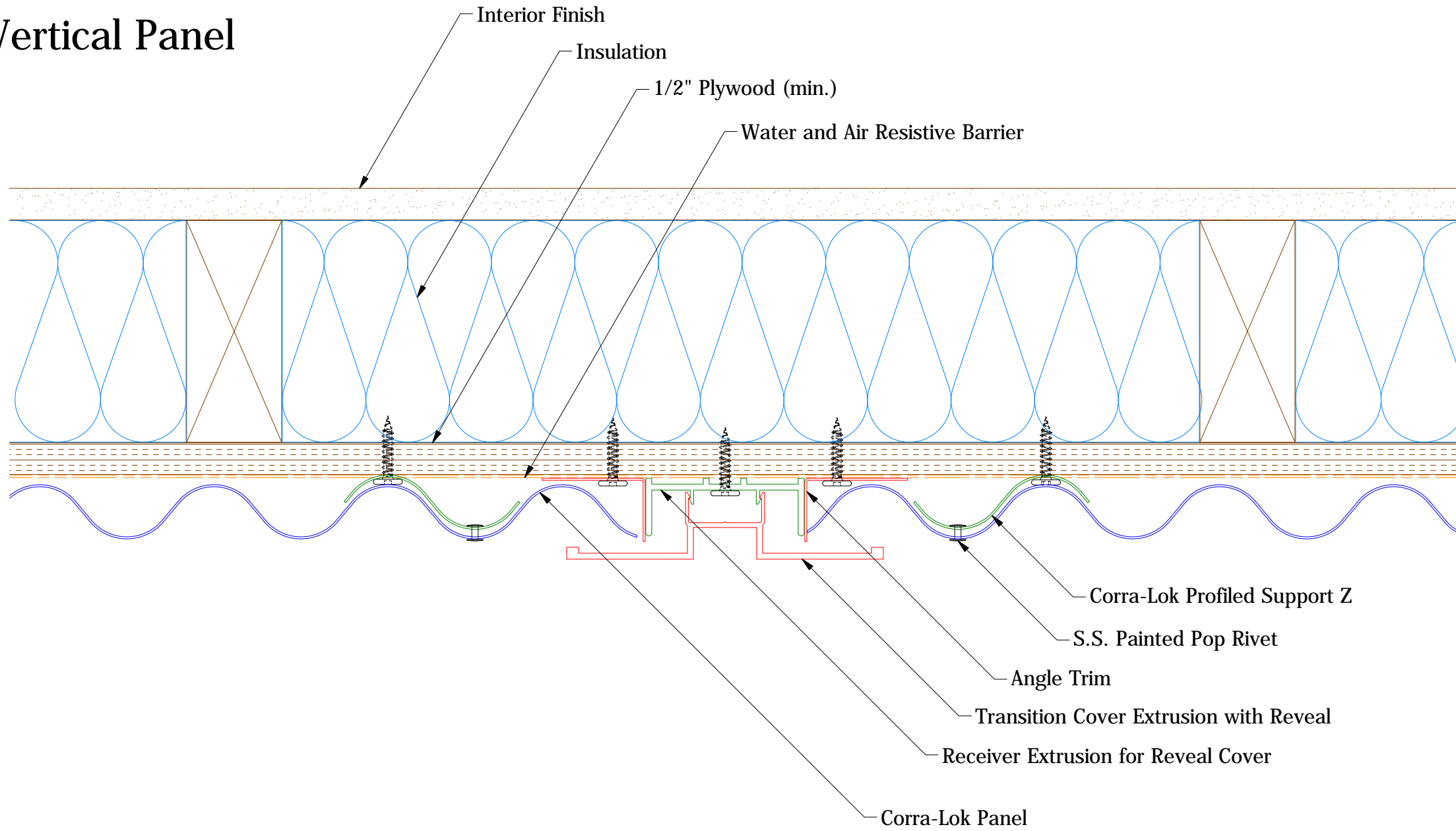
REV. NO.	DATE	DESCRIPTION OF REVISION	BY	APP
1	3/3/20	Replaced Support Z with Corra-Lok Profiled Support Z	DMR	

ATAS INTERNATIONAL, INC
Allentown PA
610-395-8445
Mesa AZ
480-558-7210

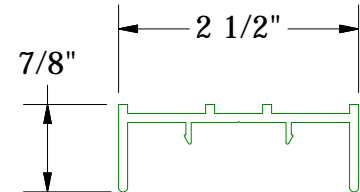
TITLE: **Corra-Lok Extruded Jamb Detail**

DWG. NO.	DR	DMR	DATE
	APP		DATE
MATERIAL	SH. SIZE	B	SCALE
			X:X

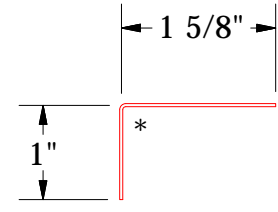
Vertical Panel



Transition Cover Extrusion with Reveal



Receiver Extrusion for Reveal Cover



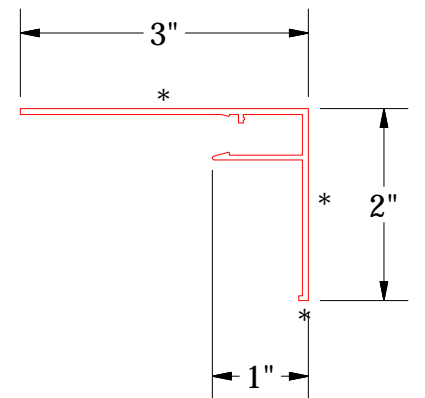
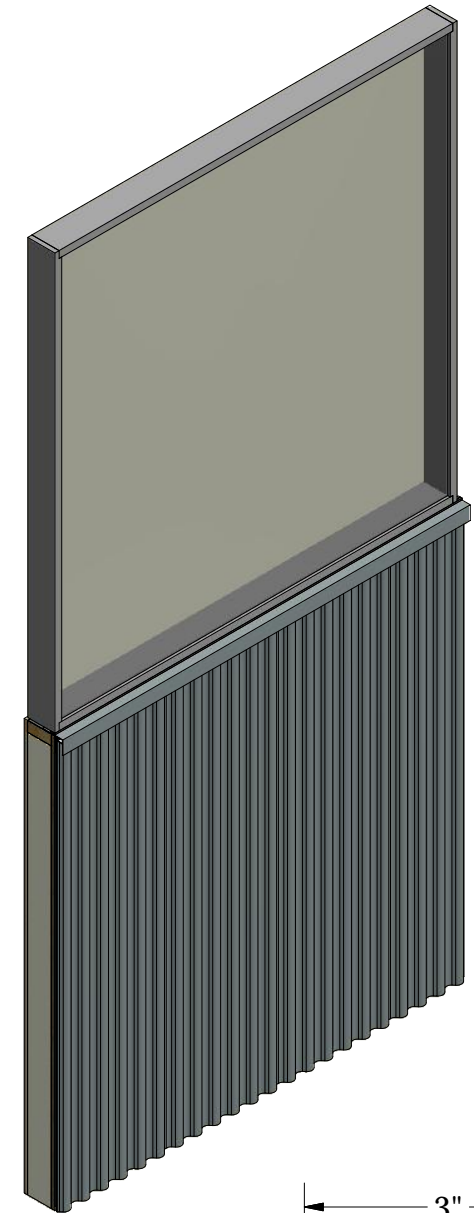
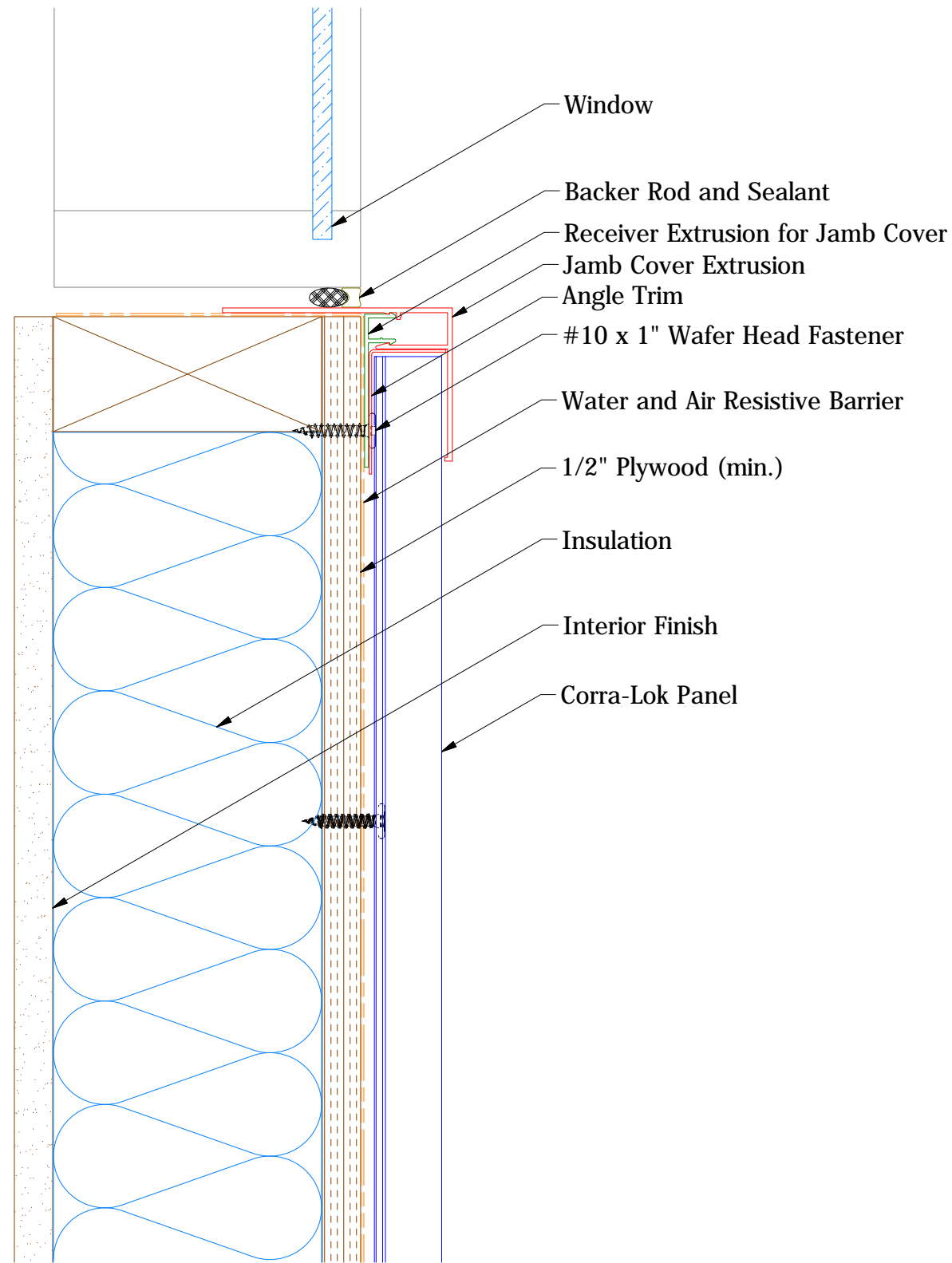
MCA680 - Angle Trim

Note: * denotes color side.

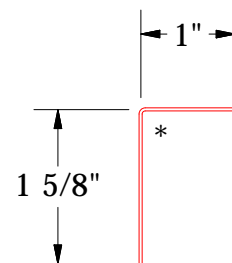
ATAS ATAS INTERNATIONAL, INC
 Allentown PA
 610-395-8445
 Mesa AZ
 480-558-7210

TITLE Corra-Lok Extruded Reveal Detail			
DWG. NO.	DR	DMR	DATE 2/7/2019
1	3/3/20	Replaced Support Z with Corra-Lok Profiled Support Z	DMR
REV. NO.	DATE	DESCRIPTION OF REVISION	BY APP
MATERIAL			SH. SIZE B SCALE X:X

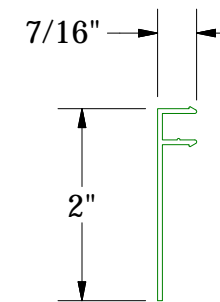
Vertical Panel



Jamb Cover



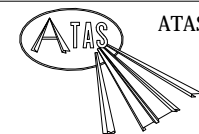
Angle Trim



Receiver Extrusion for Jamb Cover

Note: * denotes color side.

TITLE				Corra-Lok Extruded Window Sill Detail		
DWG. NO.		DR	DMR	DATE	2/14/2019	
1	3/3/20	Replaced Support Z with Corra-Lok Profiled Support Z	DMR	APP	DATE	
REV. NO.	DATE	DESCRIPTION OF REVISION	BY	APP	SCALE	
				SH. SIZE	B	
				SCALE	X:X	



ATAS INTERNATIONAL, INC
 Allentown PA
 610-395-8445
 Mesa AZ
 480-558-7210