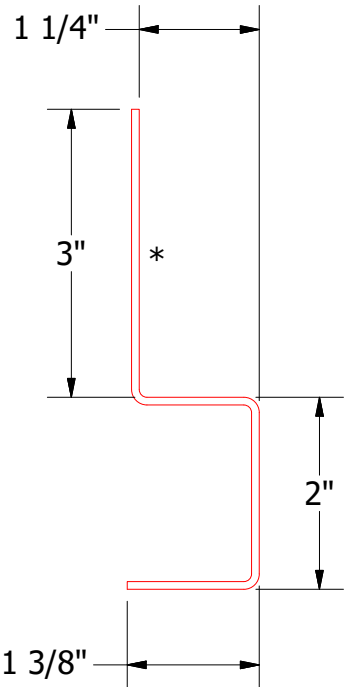
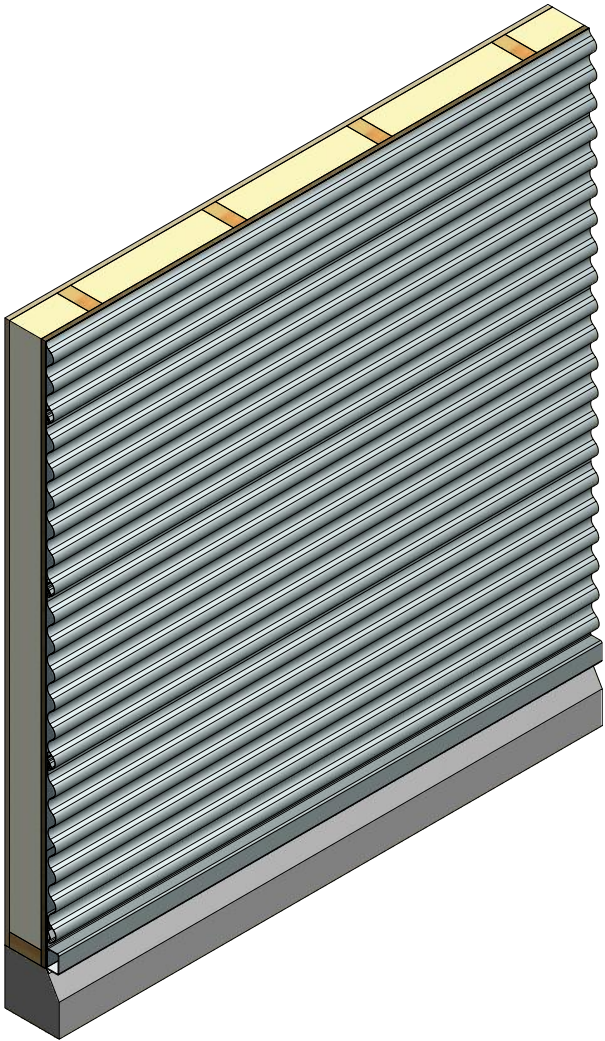
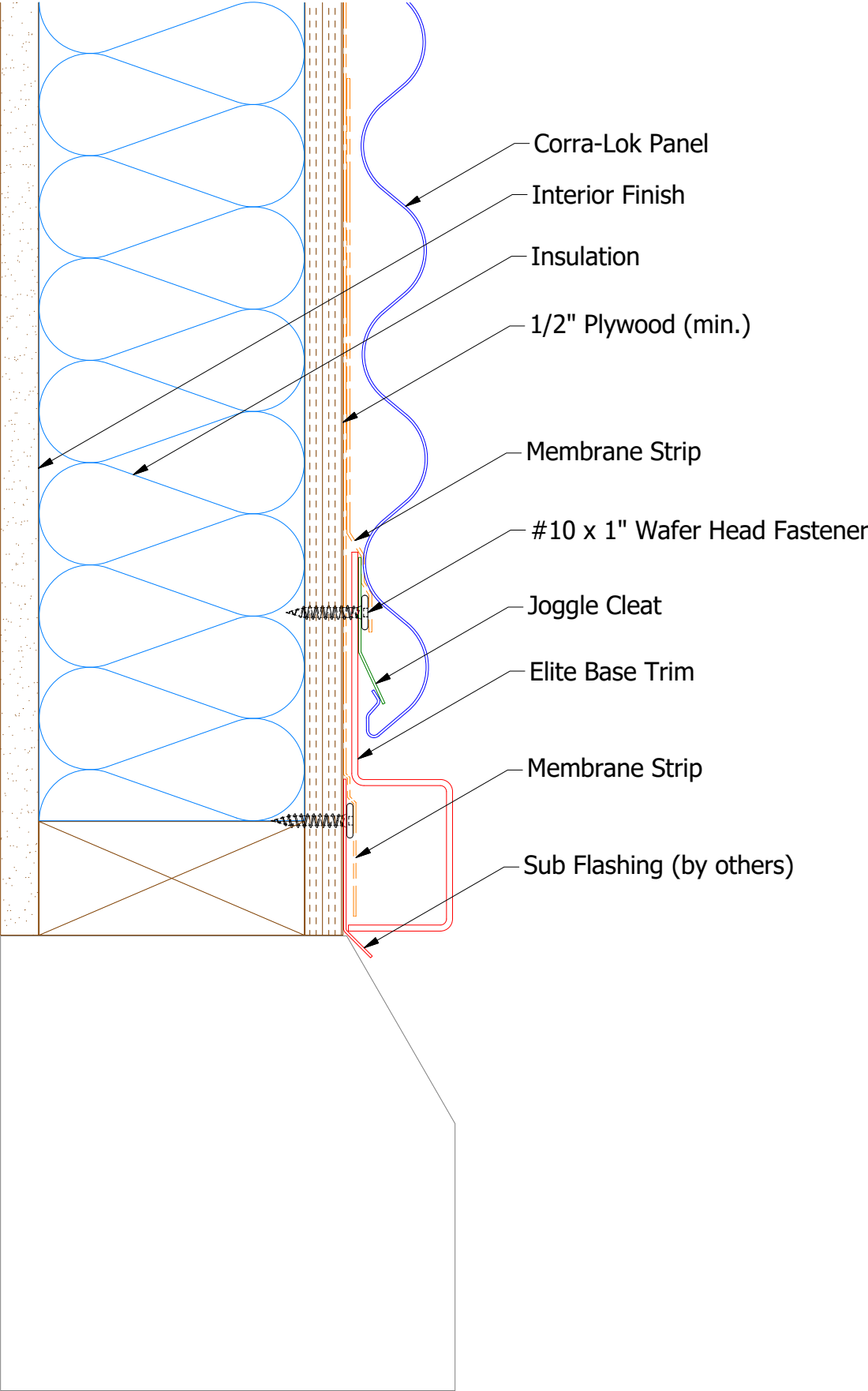
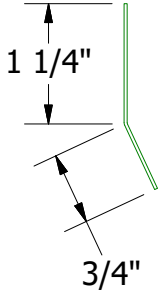


Horizontal Panel



Elite Base Trim



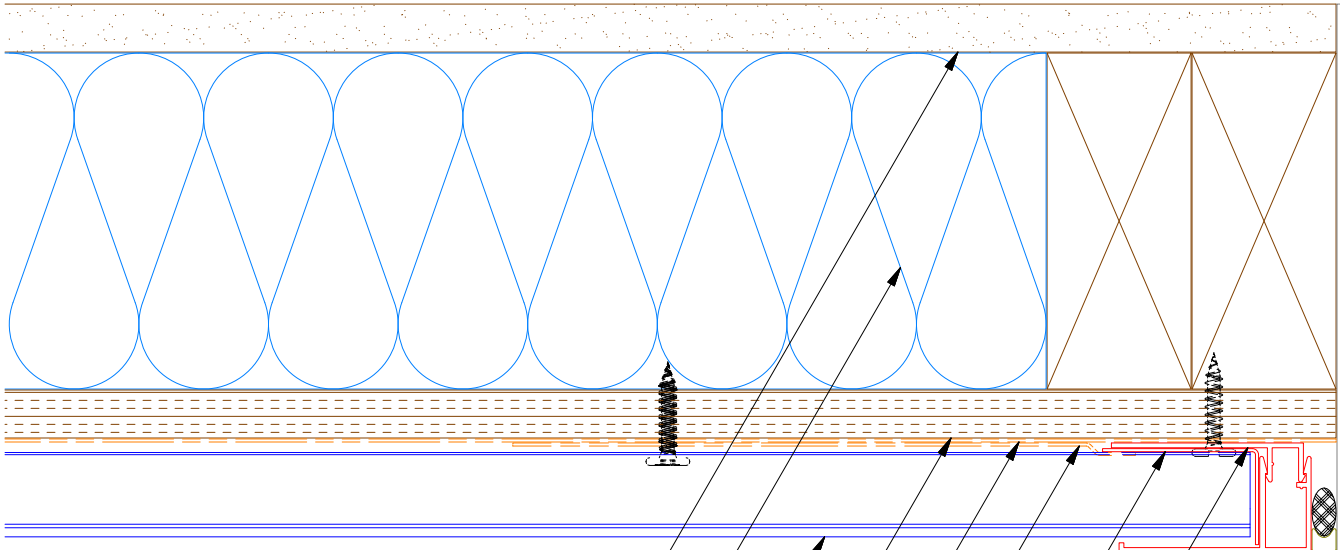
Starter Cleat

Note: * denotes color side.

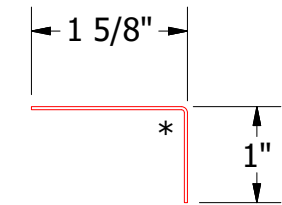
				TITLE	
				Corra-Lok Elite Base Detail	
REV. NO.		DATE		DWG. NO.	
				DR	
				APP	
				MATERIAL	
				SH. SIZE	
				SCALE	
				DATE	
				BY	
				APP	
				1/25/2019	
				X:X	

ATAS
ATAS INTERNATIONAL, INC
Allentown PA
610-395-8445
Mesa AZ
480-558-7210

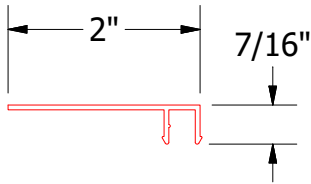
Horizontal Panel



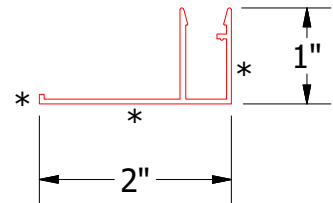
- Interior Finish
- Insulation
- Corra-Lok Panel
- 1/2" Plywood (min.)
- Water and Air Resistive Barrier
- Membrane Strip
- Angle Trim
- Receiver for Channel Cover
- Channel Cover
- Backer Rod and Sealant



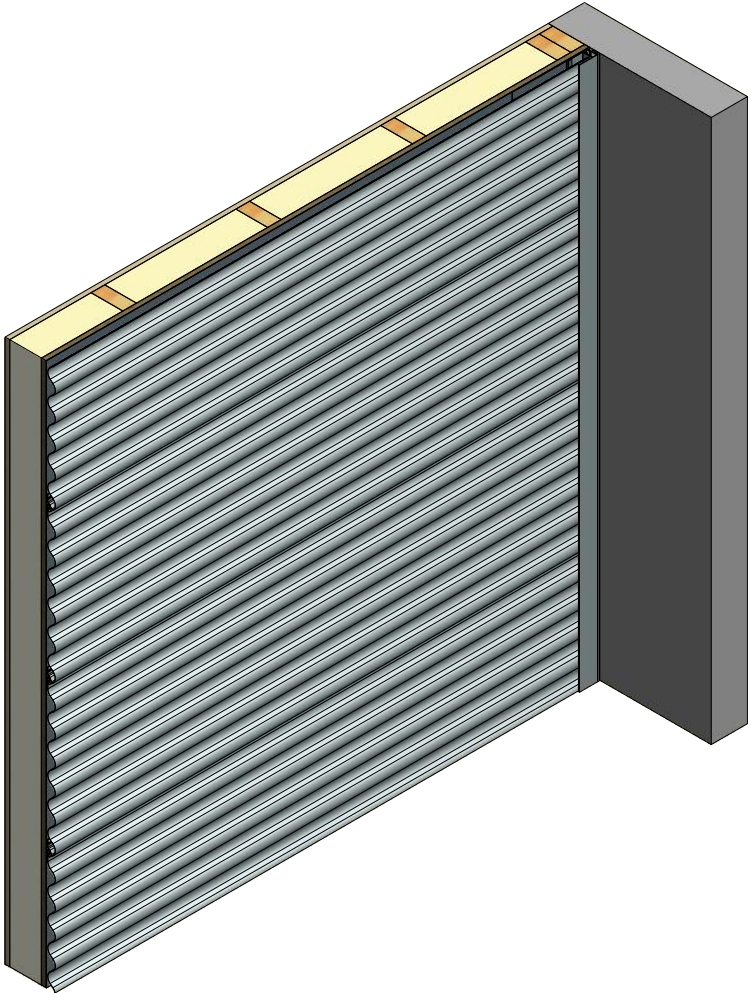
Angle Trim



Receiver for Channel Cover



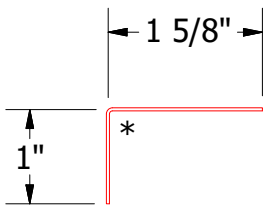
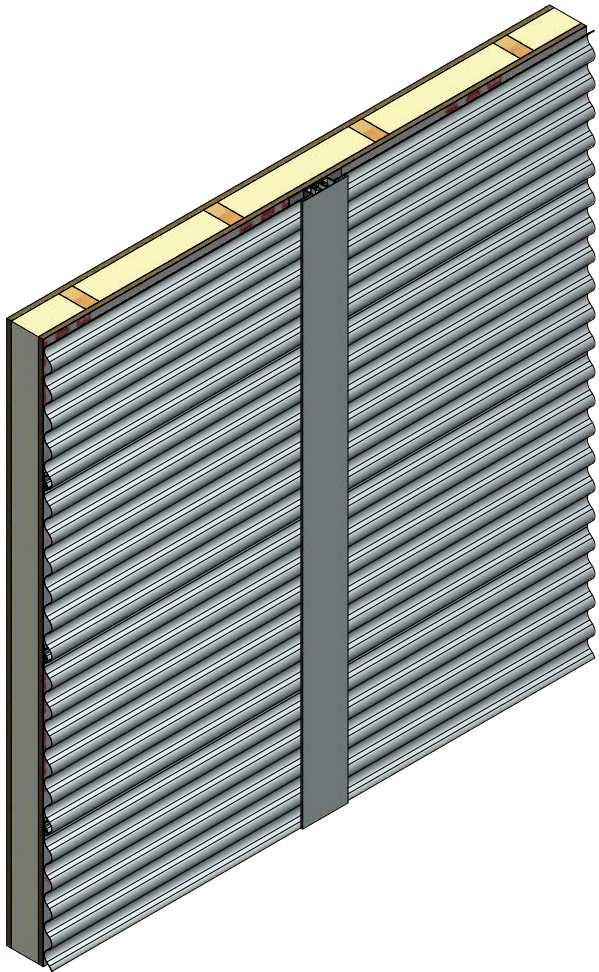
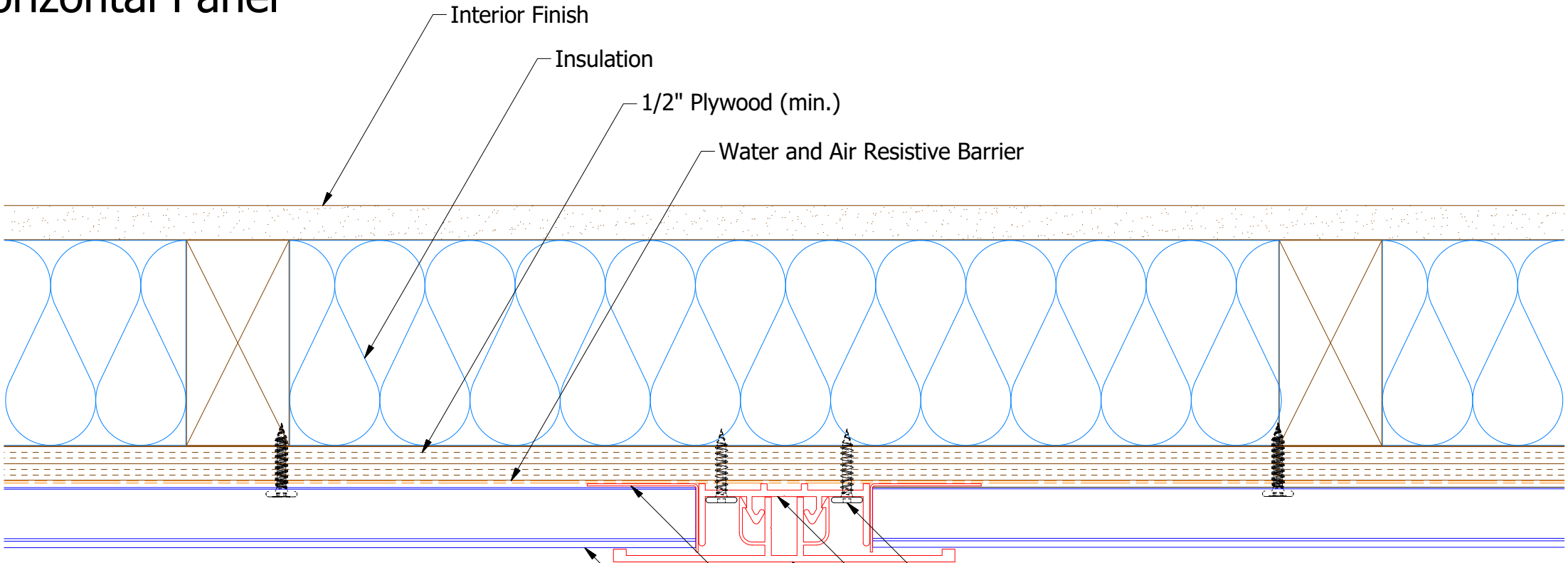
Channel Cover



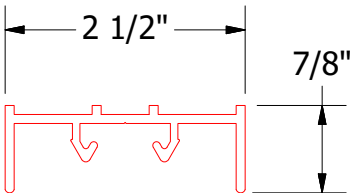
Note: * denotes color side.

TITLE				Rigid Wall II Extruded Endwall Detail			
2	9/23/2021	Removed Notched Neoprene and added new trim	JJP	DWG. NO.	DR	JJP	DATE 9/23/2021
1	2/28/20	Replaced Support Z with Corra-Lok Profiled Support Z	DMR	MATERIAL	APP		DATE
REV. NO.	DATE	DESCRIPTION OF REVISION	BY	APP	SH. SIZE	B	SCALE X:X

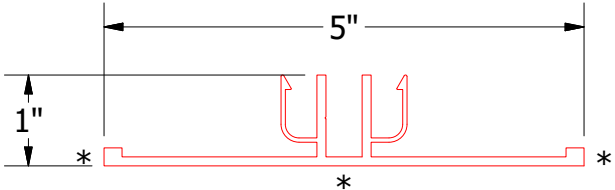
Horizontal Panel



MCA680 - Angle Trim



MAY902 - Receiver Extrusion for Flush Transition Cover



MAY102 - Flush Transition Cover Extrusion

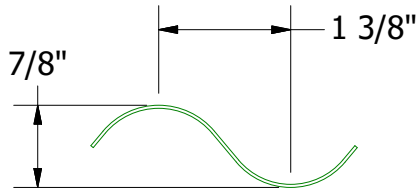
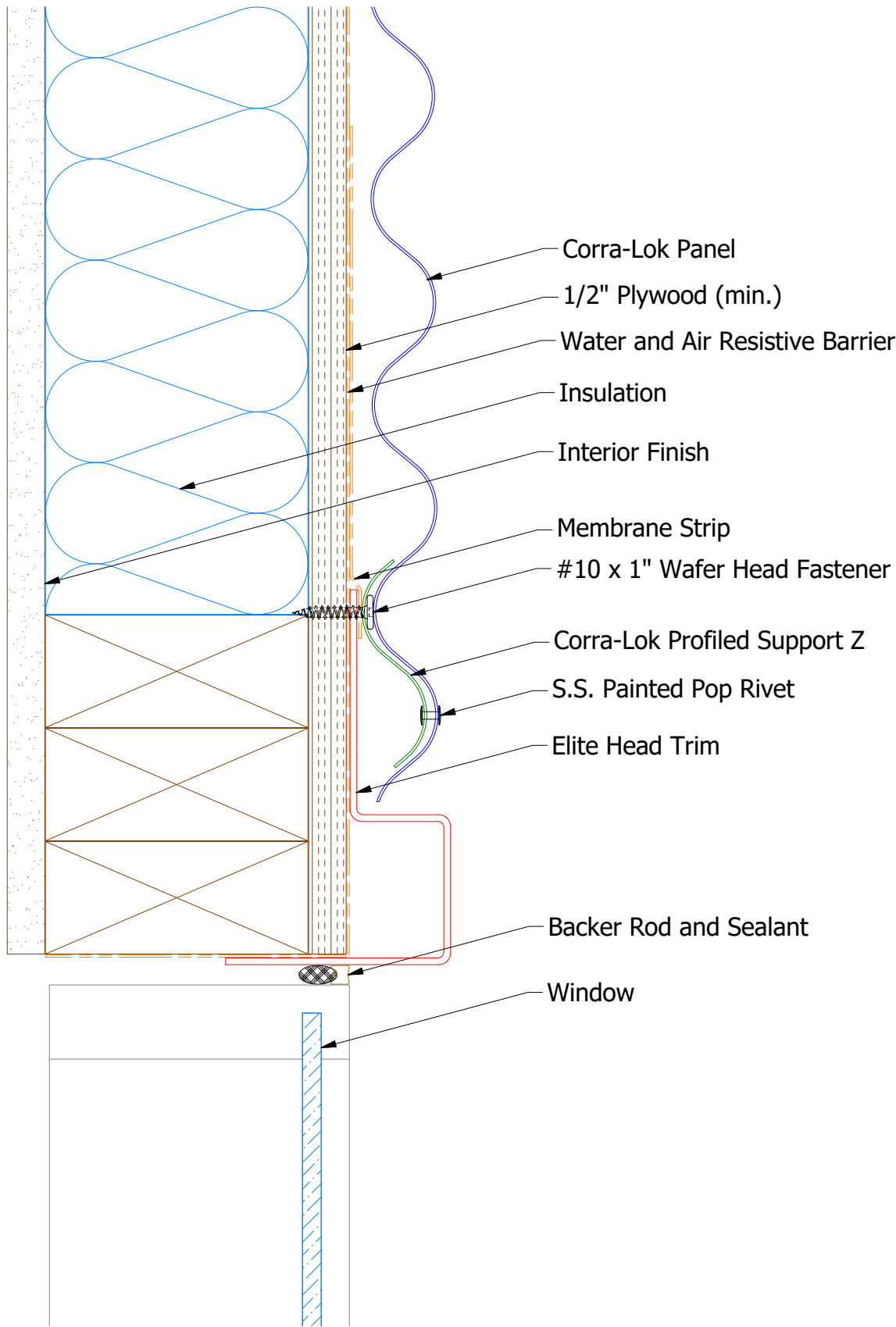
Note: * denotes color side.

					Corra-Lok Extruded Flush Detail			
2	9/23/2021	Removed Notched Neoprene and added new trim	JJP		DWG. NO.		DR	DATE
1	3/2/20	Replaced Support Z with Corra-Lok Profiled Support Z	DMR		MATERIAL		APP	DATE
REV. NO.	DATE	DESCRIPTION OF REVISION	BY	APP			SH. SIZE	SCALE
							B	X:X

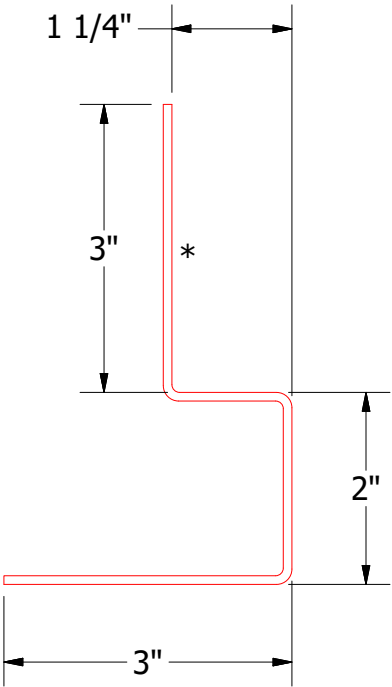


ATAS INTERNATIONAL, INC
Allentown PA
610-395-8445
Mesa AZ
480-558-7210

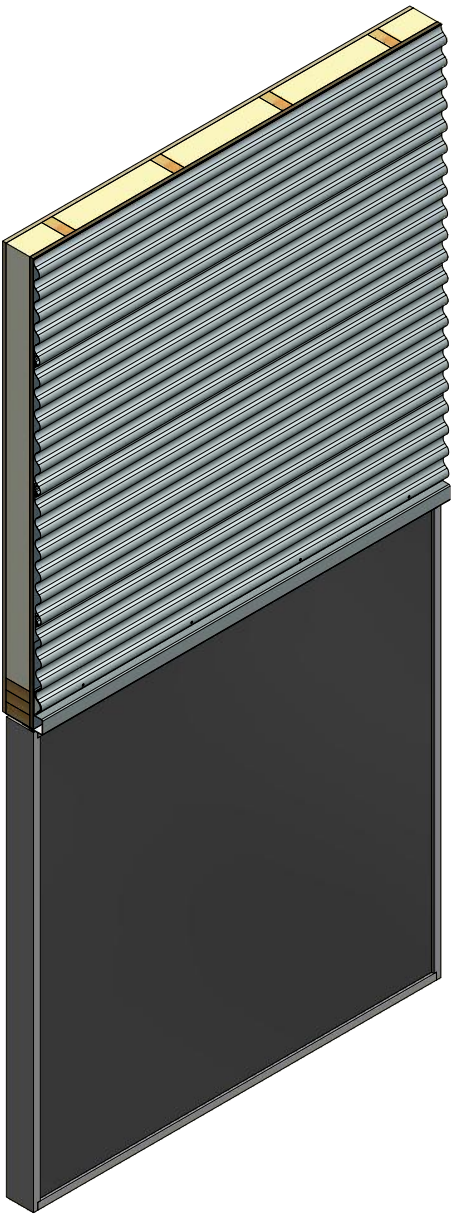
Horizontal Panel



MCA682
Corra-Lok Profiled Support Z



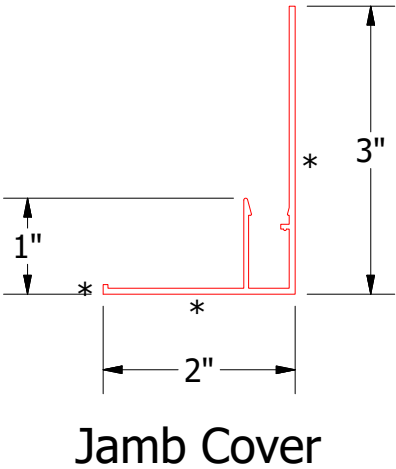
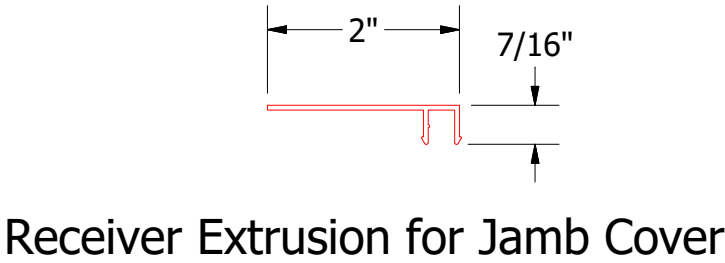
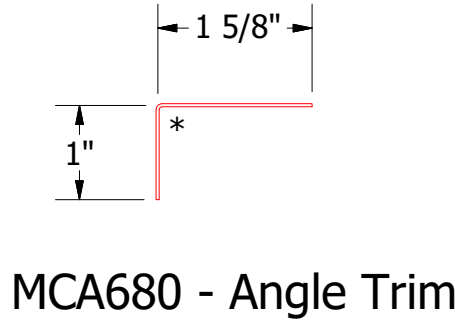
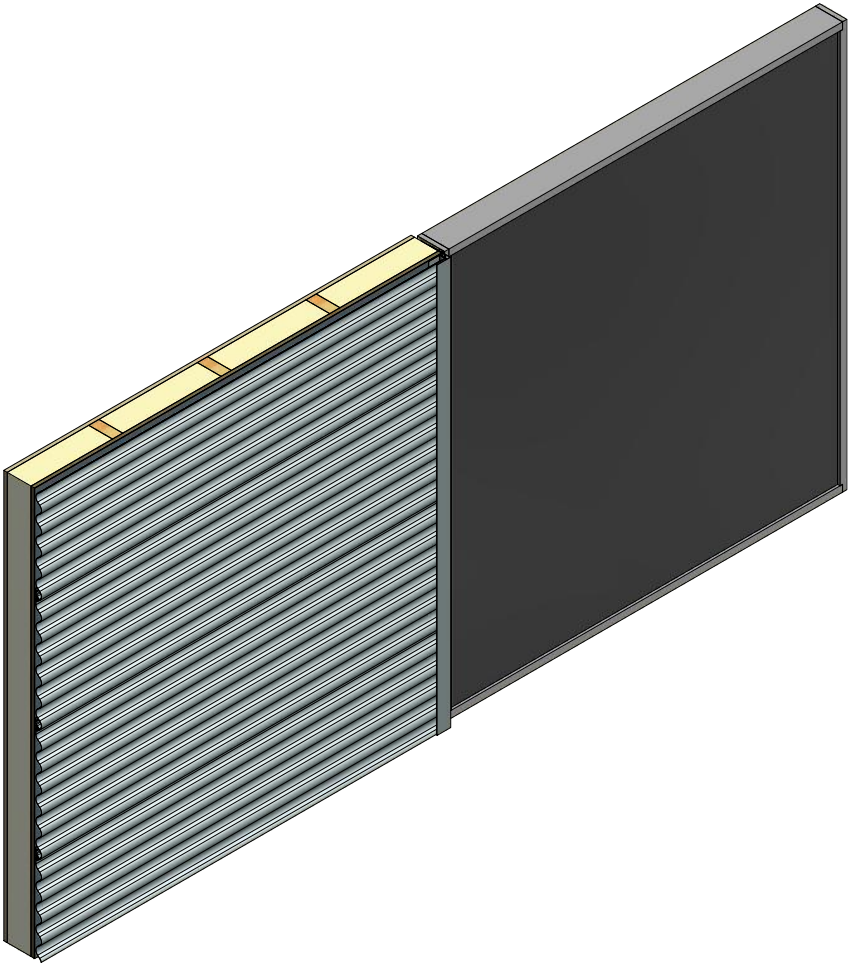
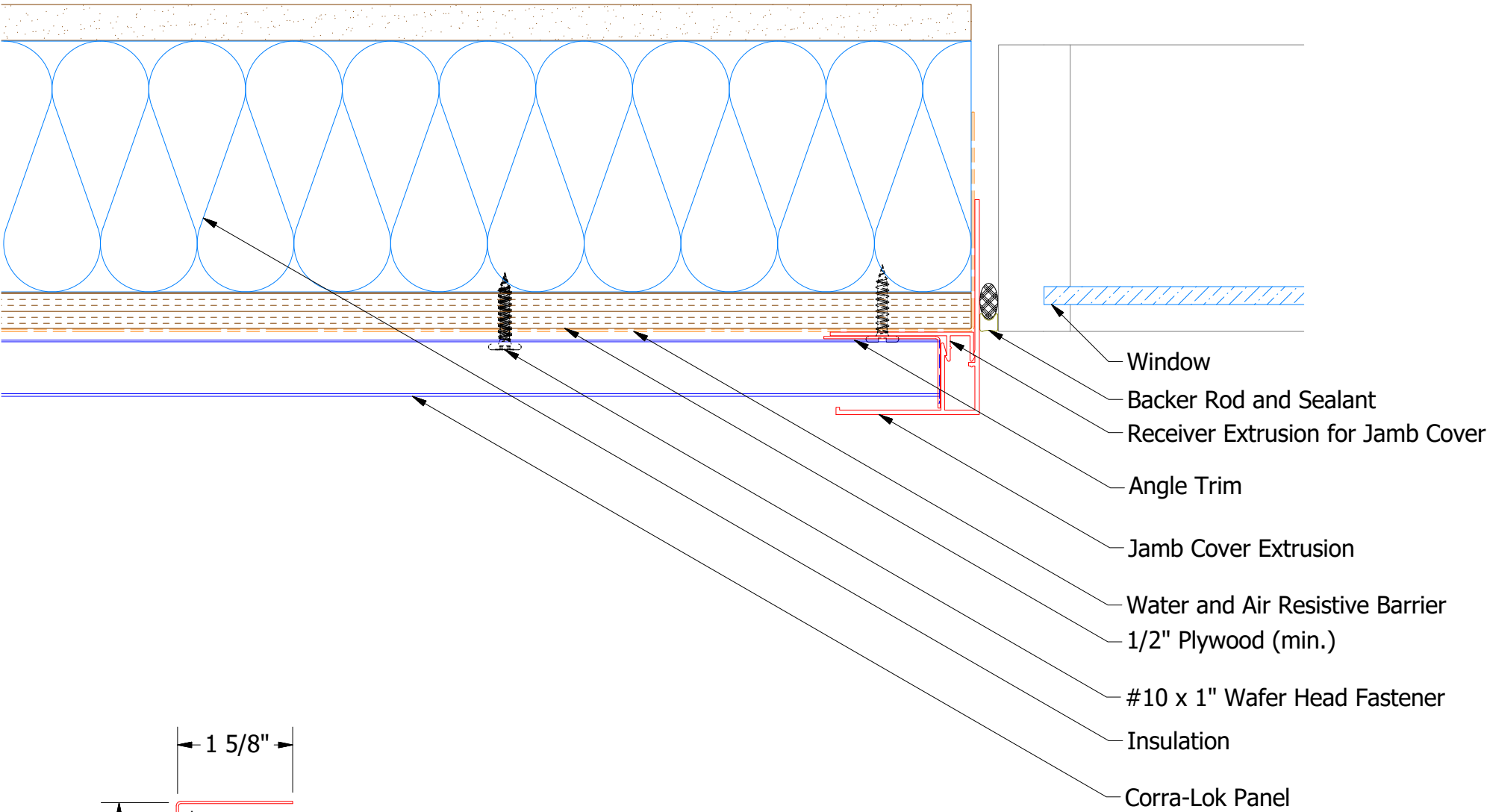
Elite Head Trim




Note: * denotes color side.

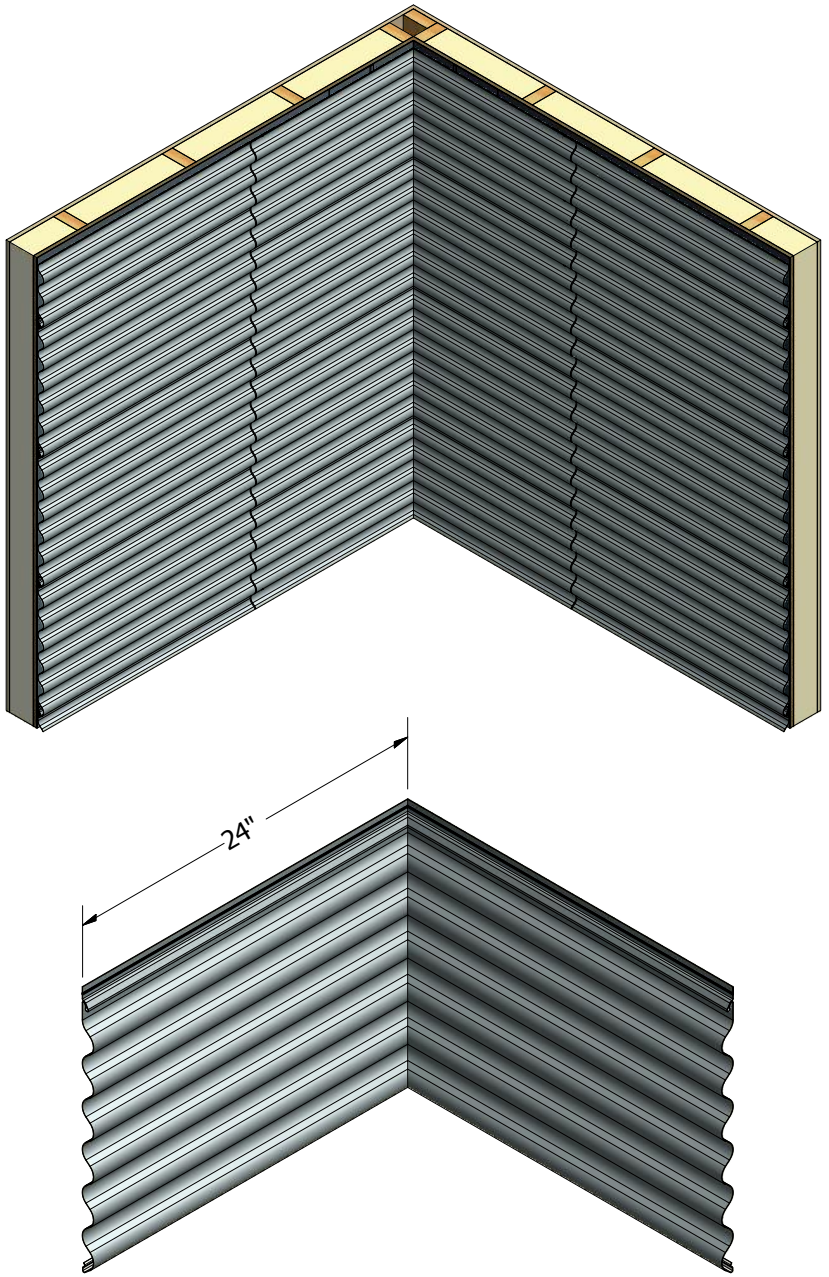
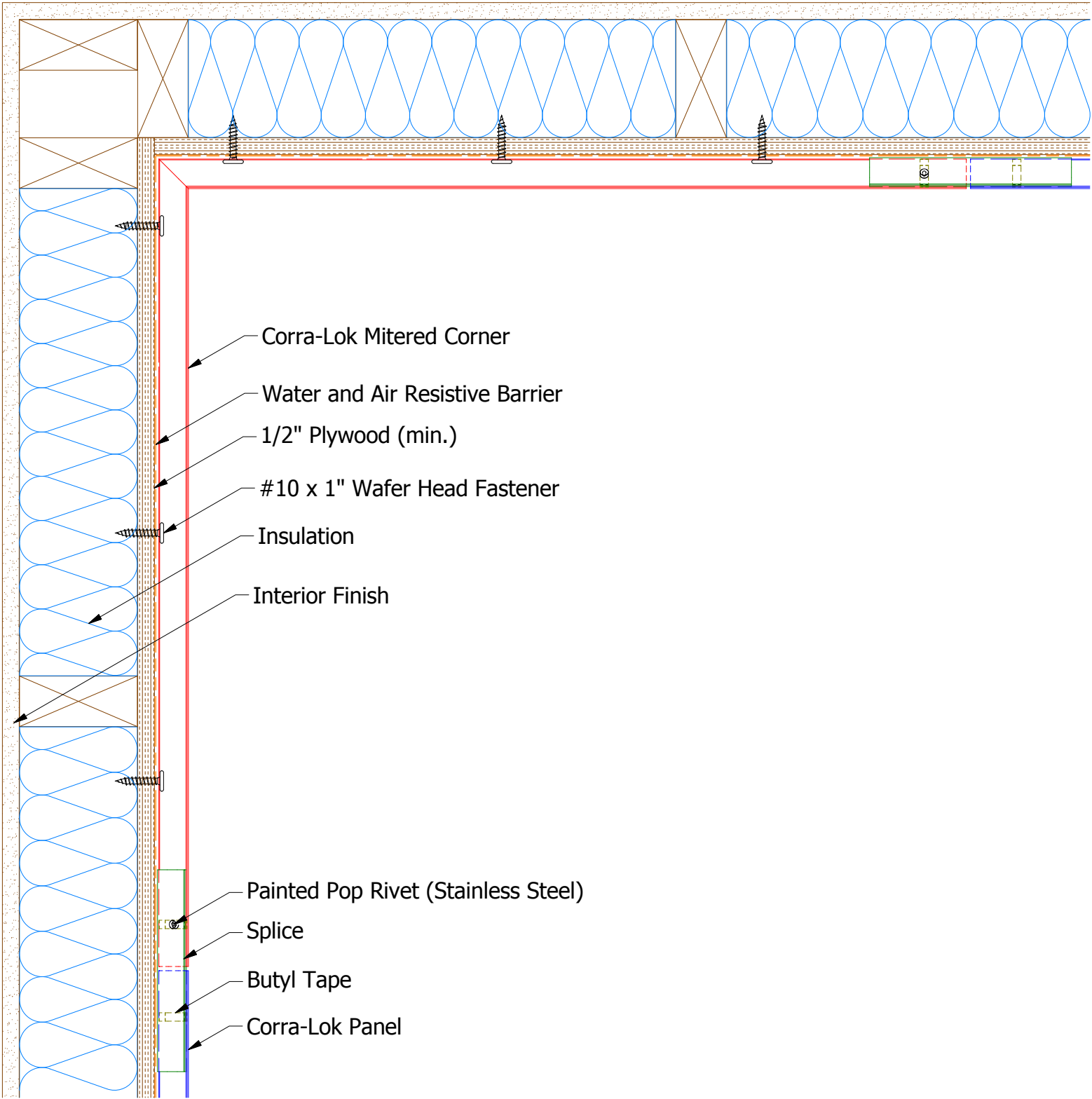
								Corra-Lok Elite Head Detail	
						DWG. NO.		DR	DATE
								DMR	2/1/2019
1	3/2/20	Replaced Support Z with Corra-Lok Profiled Support Z			DMR	MATERIAL		APP	DATE
REV. NO.	DATE	DESCRIPTION OF REVISION			BY	APP	SH. SIZE		SCALE
							B		X:X

Horizontal Panel



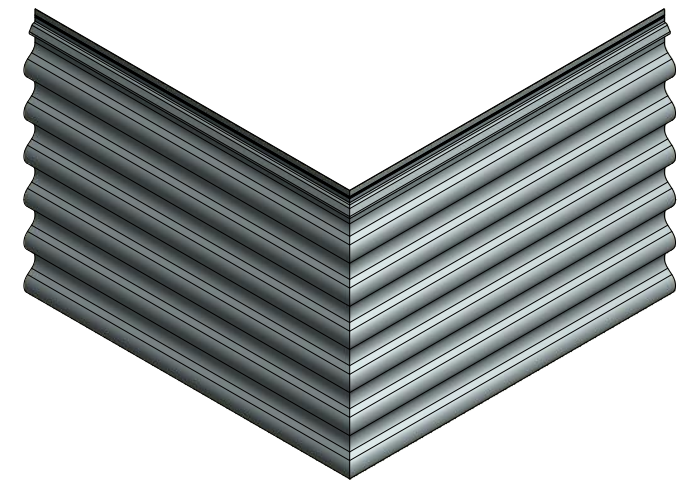
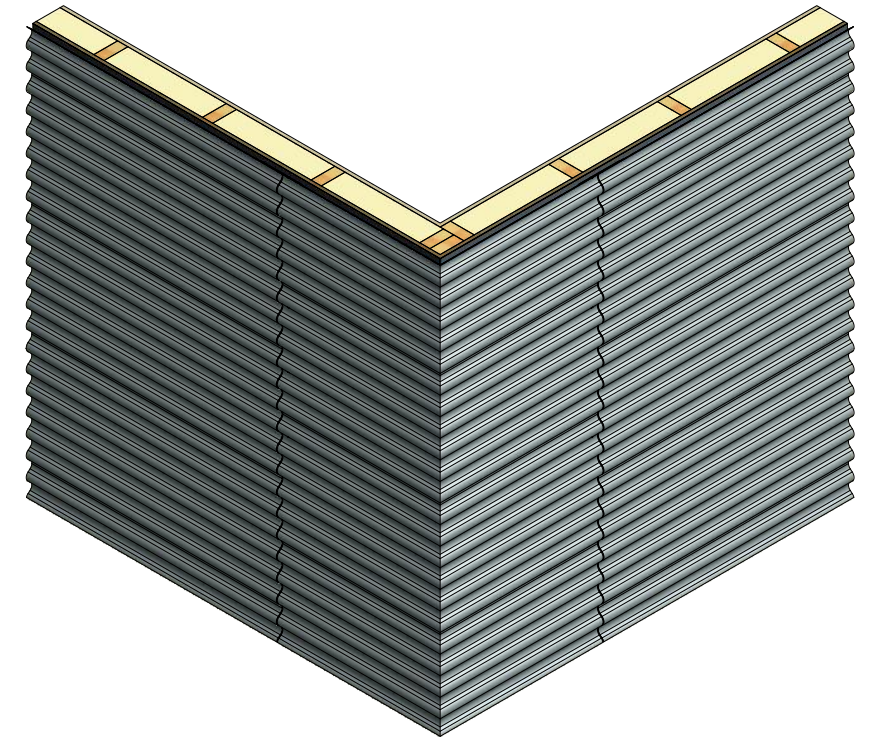
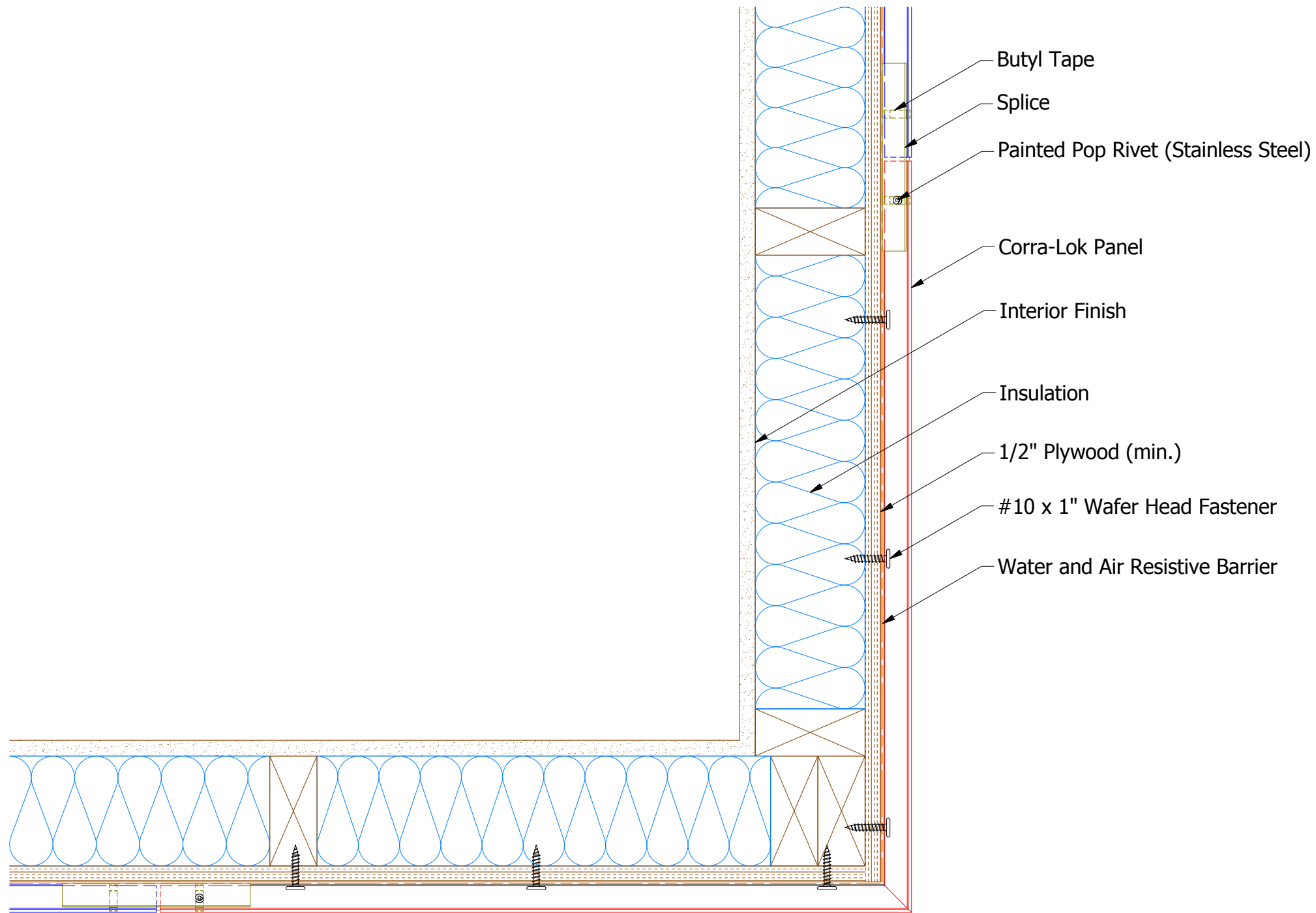
Note: * denotes color side.

				 ATAS INTERNATIONAL, INC Allentown PA 610-395-8445 Mesa AZ 480-558-7210		
				TITLE Corra-Lok Extruded Jamb Detail		
2	9/23/2021	Removed Notched Neoprene and added new trim	JJP	DWG. NO.	DR DMR	DATE 2/8/2019
1	3/3/20	Replaced Support Z with Corra-Lok Profiled Support Z	DMR	APP		DATE
REV. NO.	DATE	DESCRIPTION OF REVISION	BY	APP	MATERIAL	SH. SIZE B
						SCALE X:X



Corra-Lok Mitered Corner

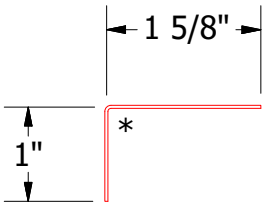
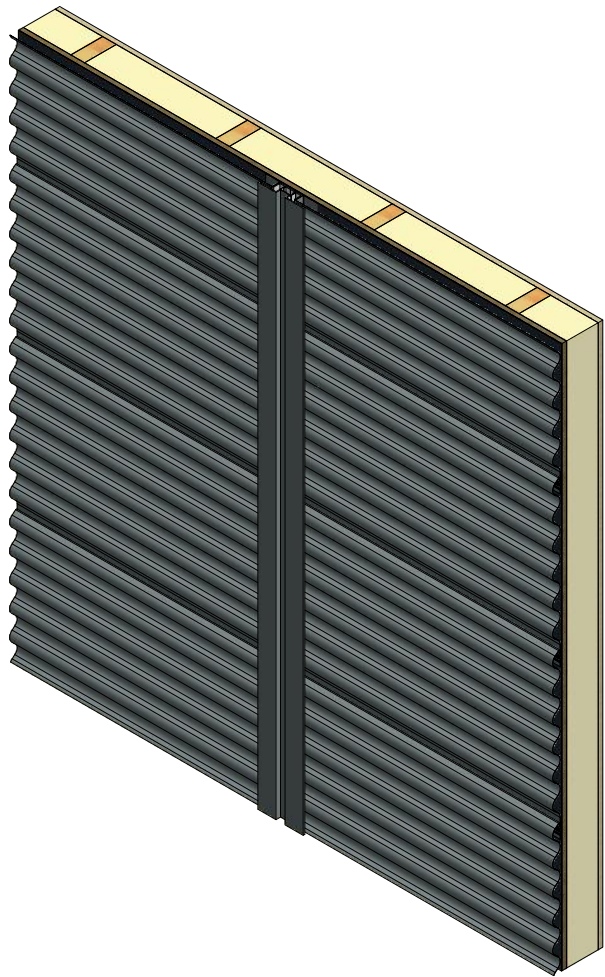
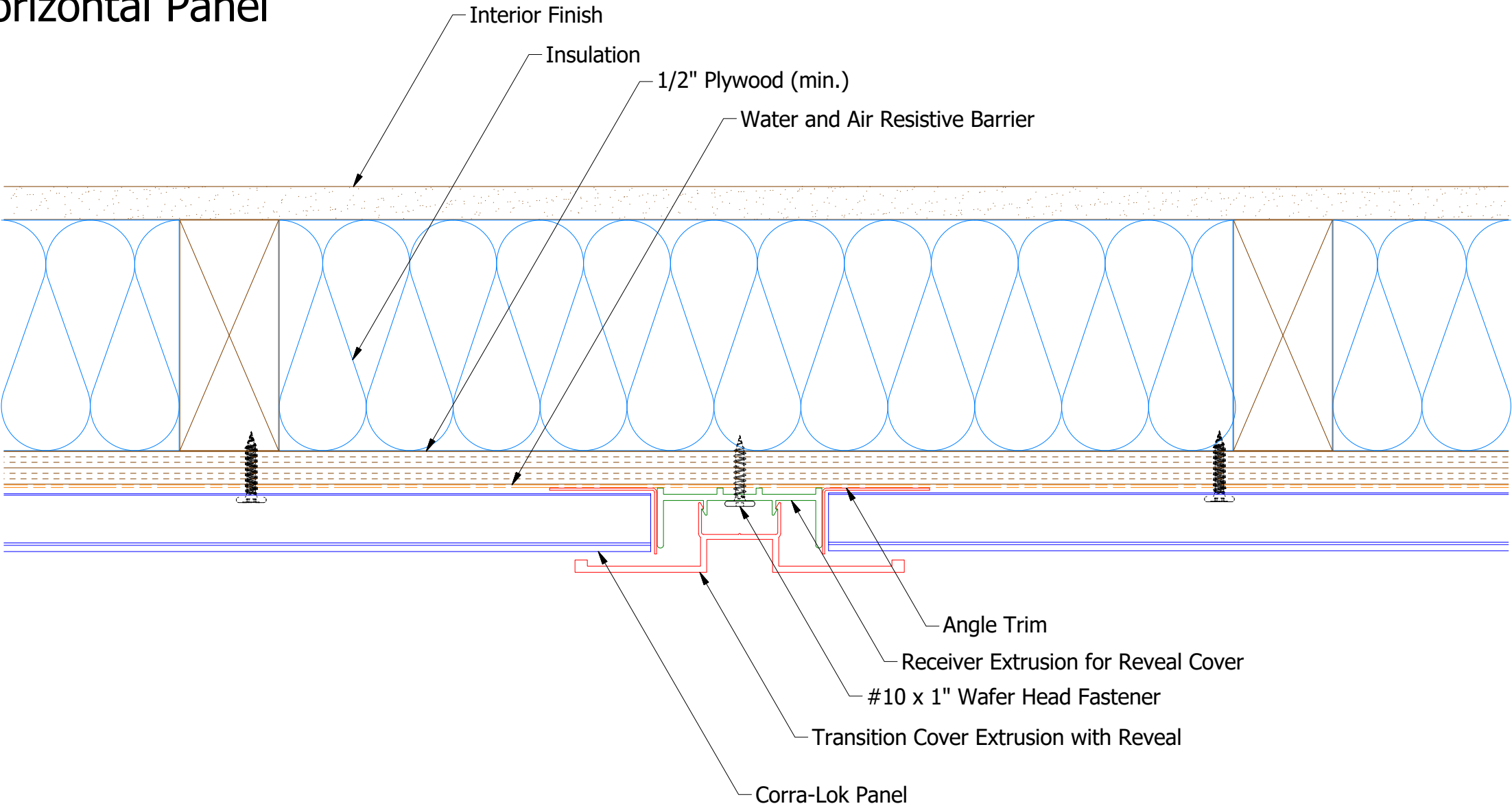
						Corra-Lok Inside Mitered Corner Detail		
						DWG. NO.	DR	DATE
							DMR	2/14/2019
							APP	DATE
						MATERIAL		
REV. NO.	DATE	DESCRIPTION OF REVISION	BY	APP			SH. SIZE	SCALE
							B	X:X



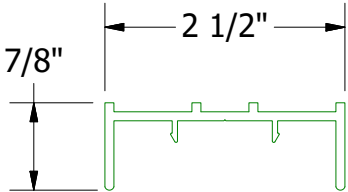
Corra-Lok Mitered Corner

					Corra-Lok Mitered Corner Detail							
					DWG. NO.			DR	KRK	DATE		
								2/10/2015				
					MATERIAL			APP	DATE			
REV. NO.	DATE	DESCRIPTION OF REVISION			BY	APP	SH. SIZE			B	SCALE	X:X

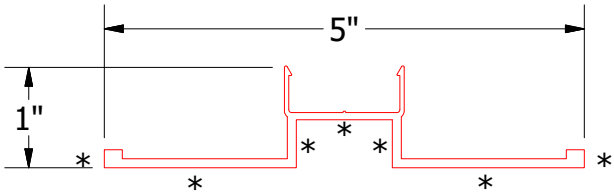
Horizontal Panel



MCA680 - Angle Trim



Receiver Extrusion for Reveal Cover

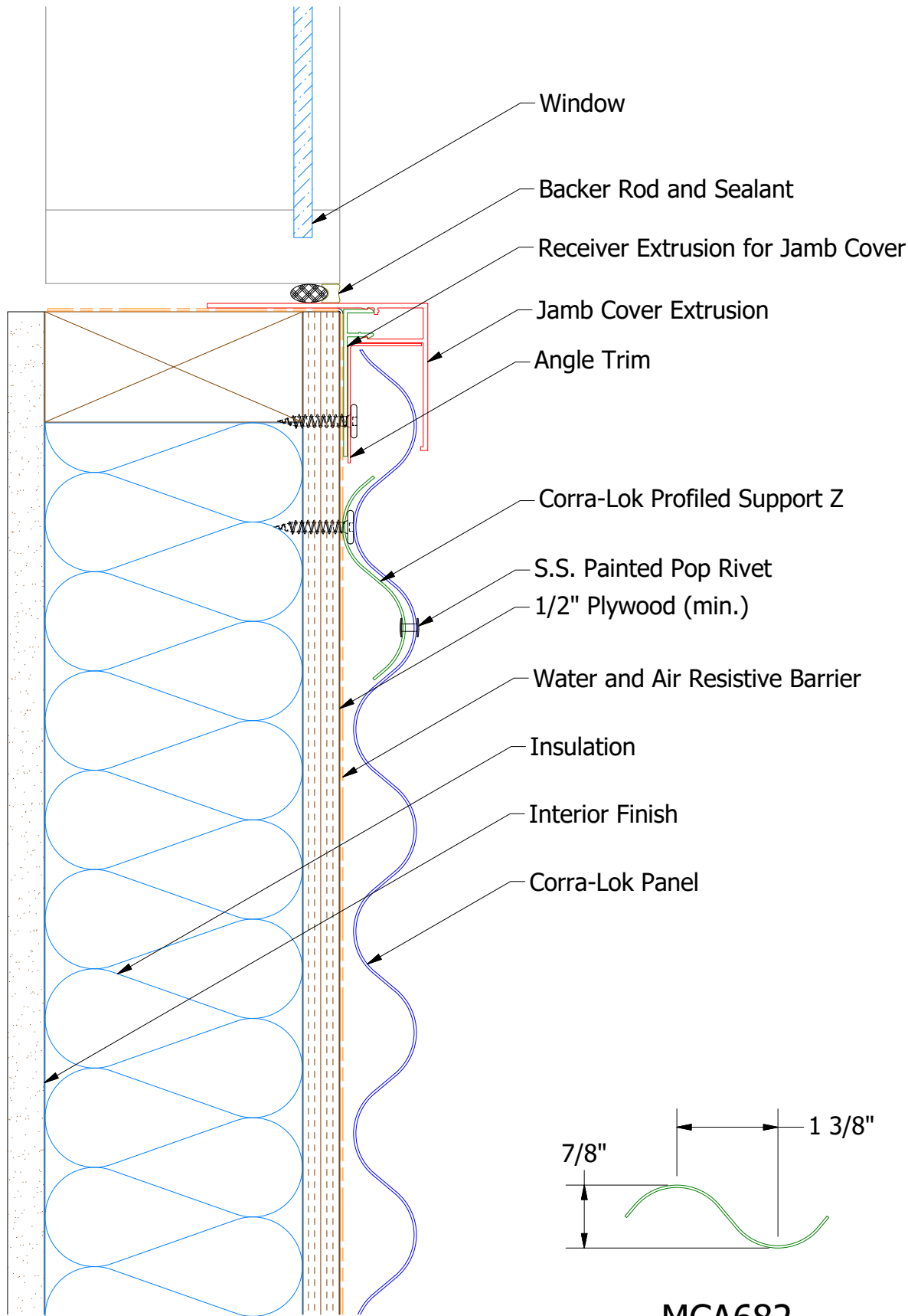


Transition Cover Extrusion with Reveal

Note: * denotes color side.

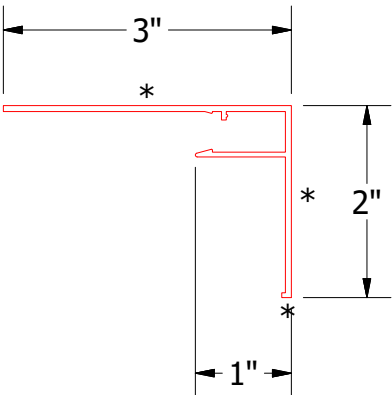
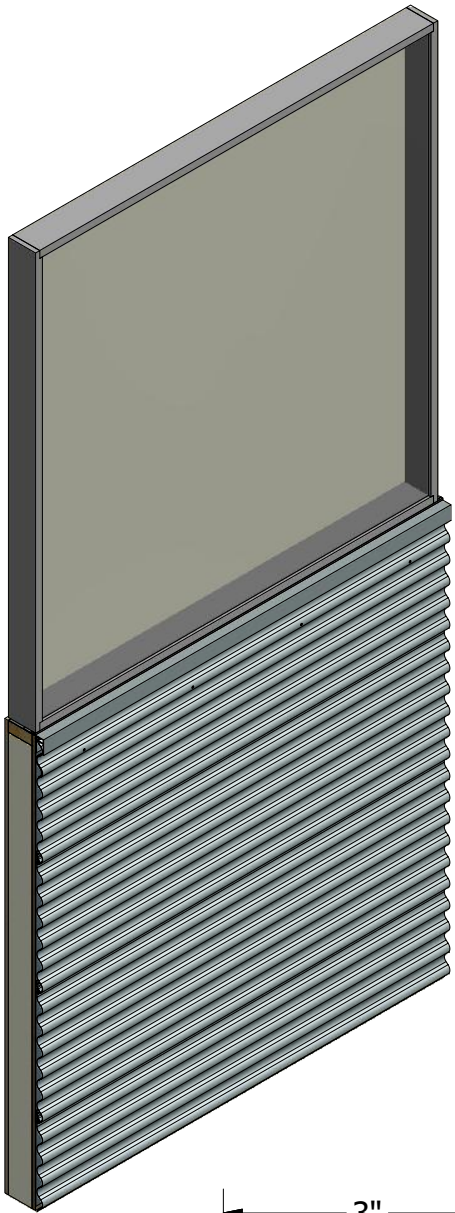
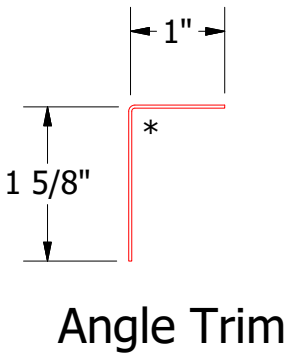
					Corra-Lok Extruded Reveal Detail				
2	9/23/2021	Removed Notched Neoprene and added new trim	JJP	DWG. NO.	DR	DMR	DATE	2/7/2019	
1	3/3/20	Replaced Support Z with Corra-Lok Profiled Support Z	DMR			APP	DATE		
REV. NO.	DATE	DESCRIPTION OF REVISION	BY	APP	MATERIAL	SH. SIZE	B	SCALE	X:X

Horizontal Panel

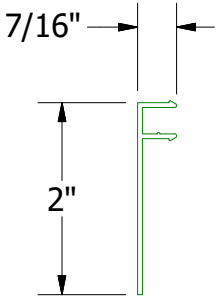


Note: * denotes color side.

MCA682
Corra-Lok Profiled Support Z



Receiver Extrusion for Jamb Cover



<div><div>ATAS</div><div>ATAS INTERNATIONAL, INC Allentown PA 610-395-8445 Mesa AZ 480-558-7210</div></div>			
TITLE Corra-Lok Extruded Window Sill Detail			
DWG. NO.		DR DMR	DATE 2/14/2019
REV. NO.		APP	DATE
1		3/3/20	Replaced Support Z with Corra-Lok Profiled Support Z
DESCRIPTION OF REVISION		BY	APP
MATERIAL		SH. SIZE B	SCALE X:X