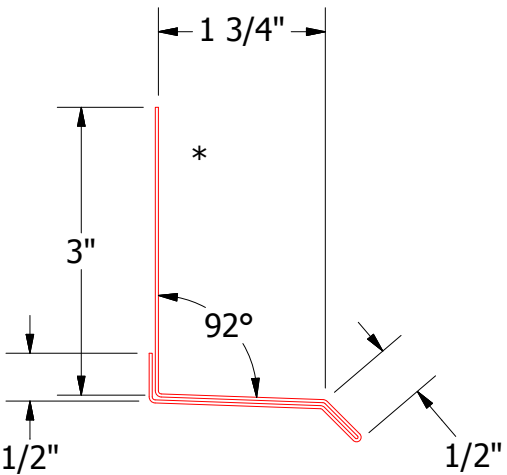
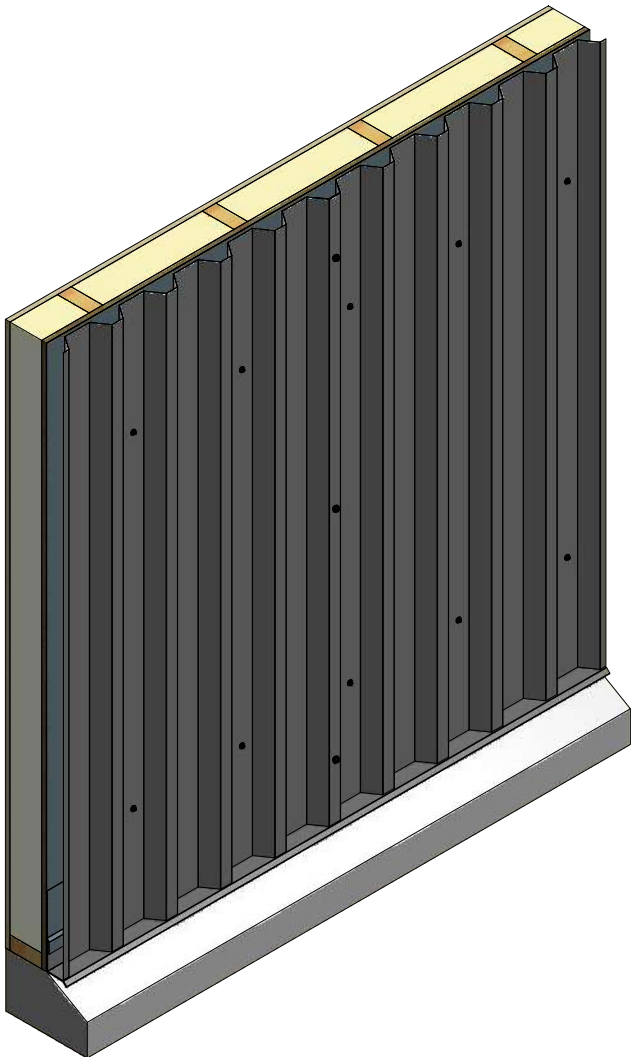
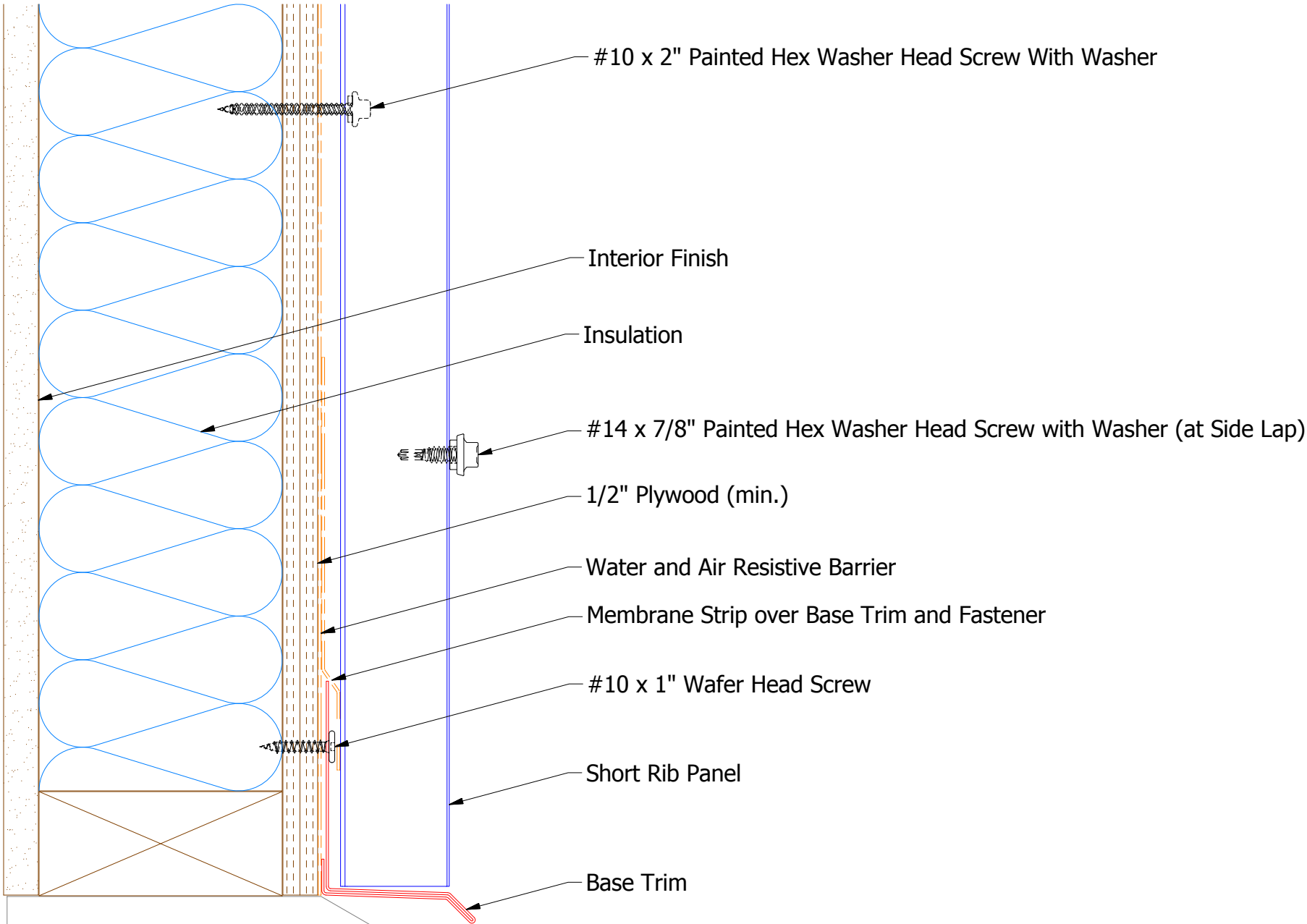



Vertical Panel



BWA661 - Base Trim

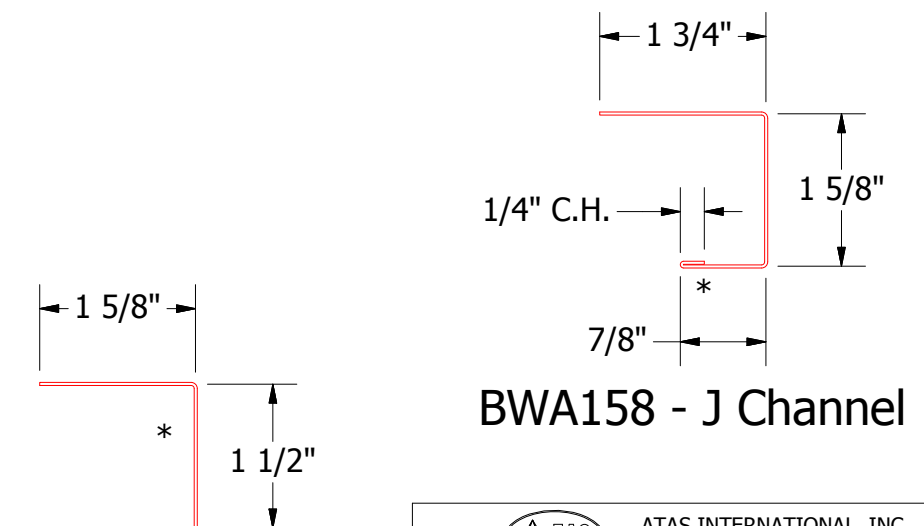
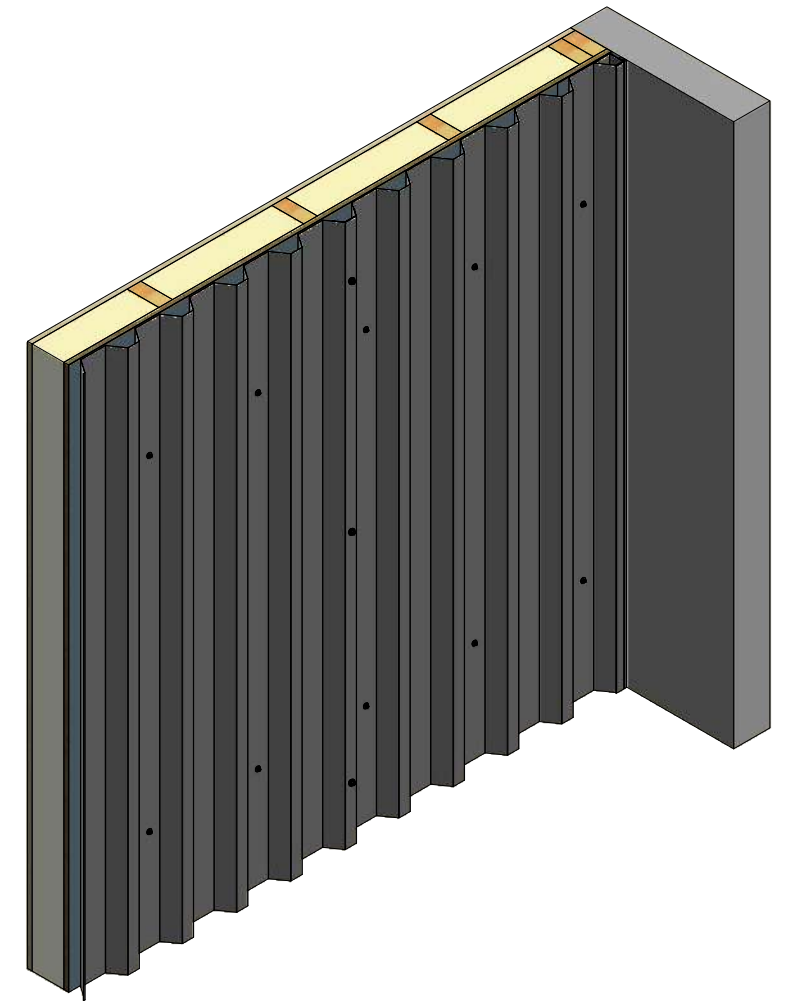
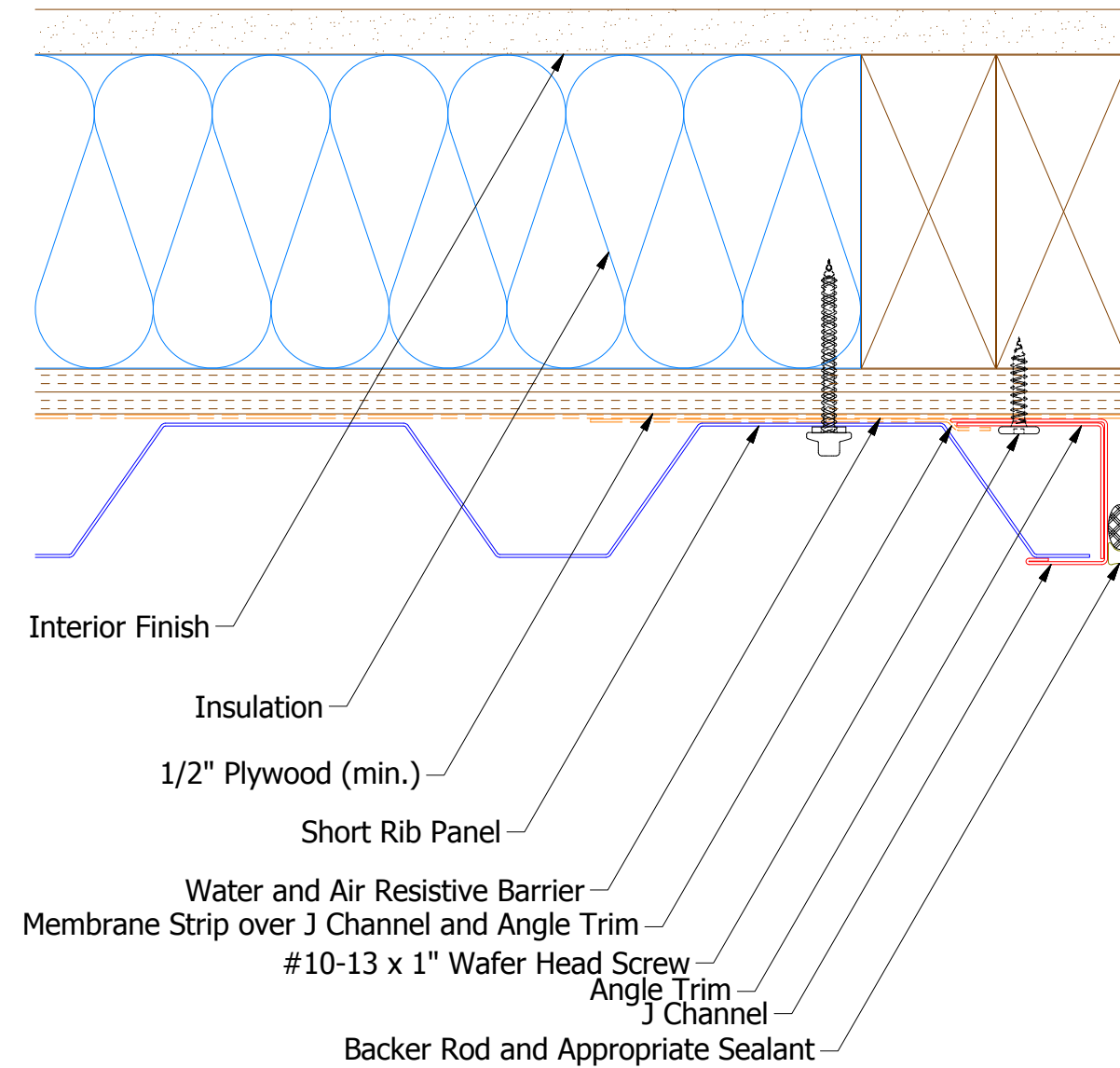


ATAS INTERNATIONAL, INC
Allentown PA
610-395-8445
Mesa AZ
480-558-7210

TITLE Belvedere Short Rib Base Detail		
DWG. NO.	DR KRK	DATE 6/12/2015
MATERIAL	APP DAS	DATE 7/21/16
REV. NO.	SH. SIZE B	SCALE X:X

REV. NO.	DATE	DESCRIPTION OF REVISION	BY	APP

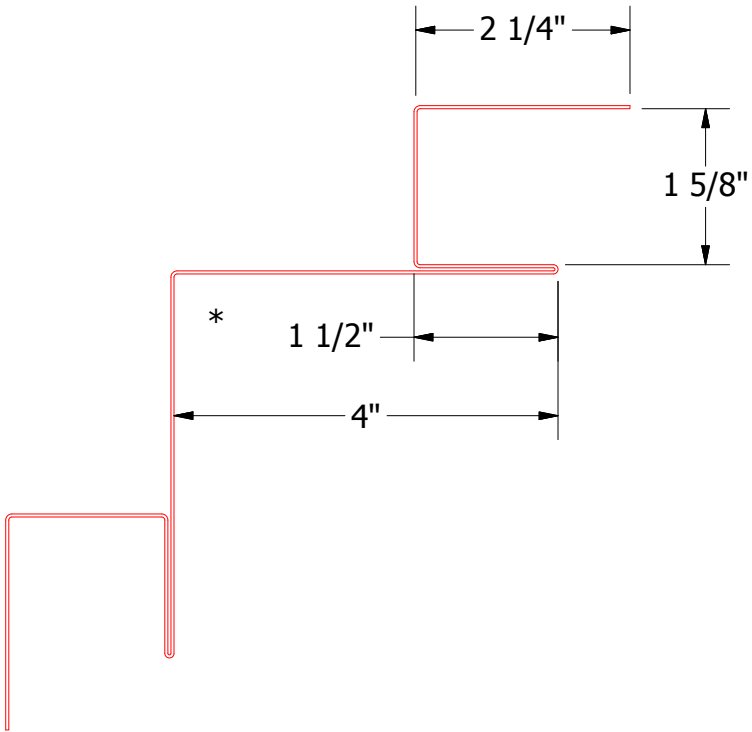
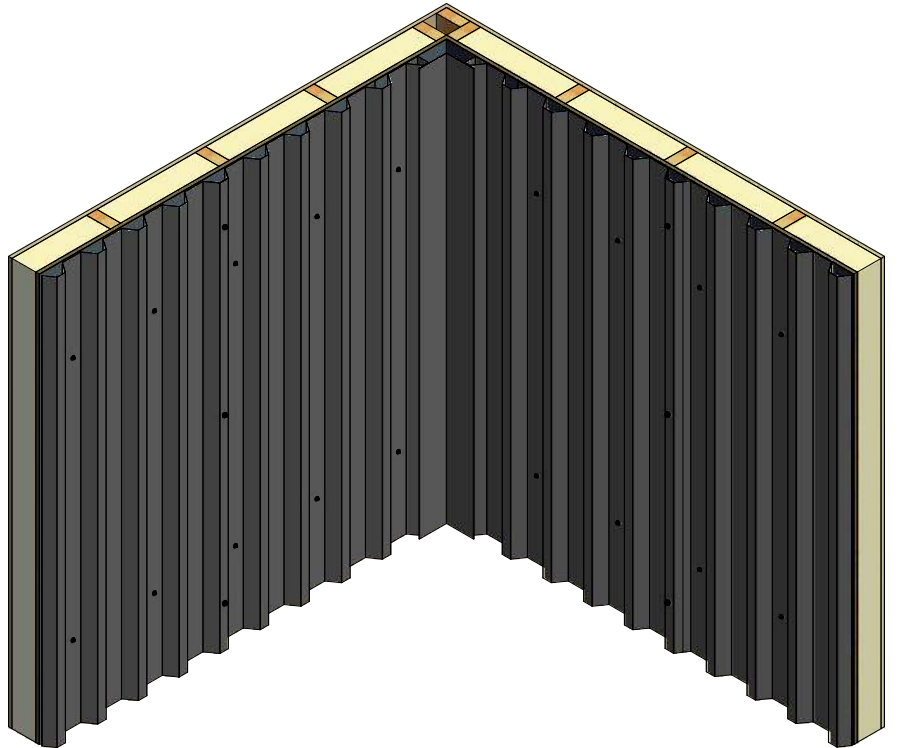
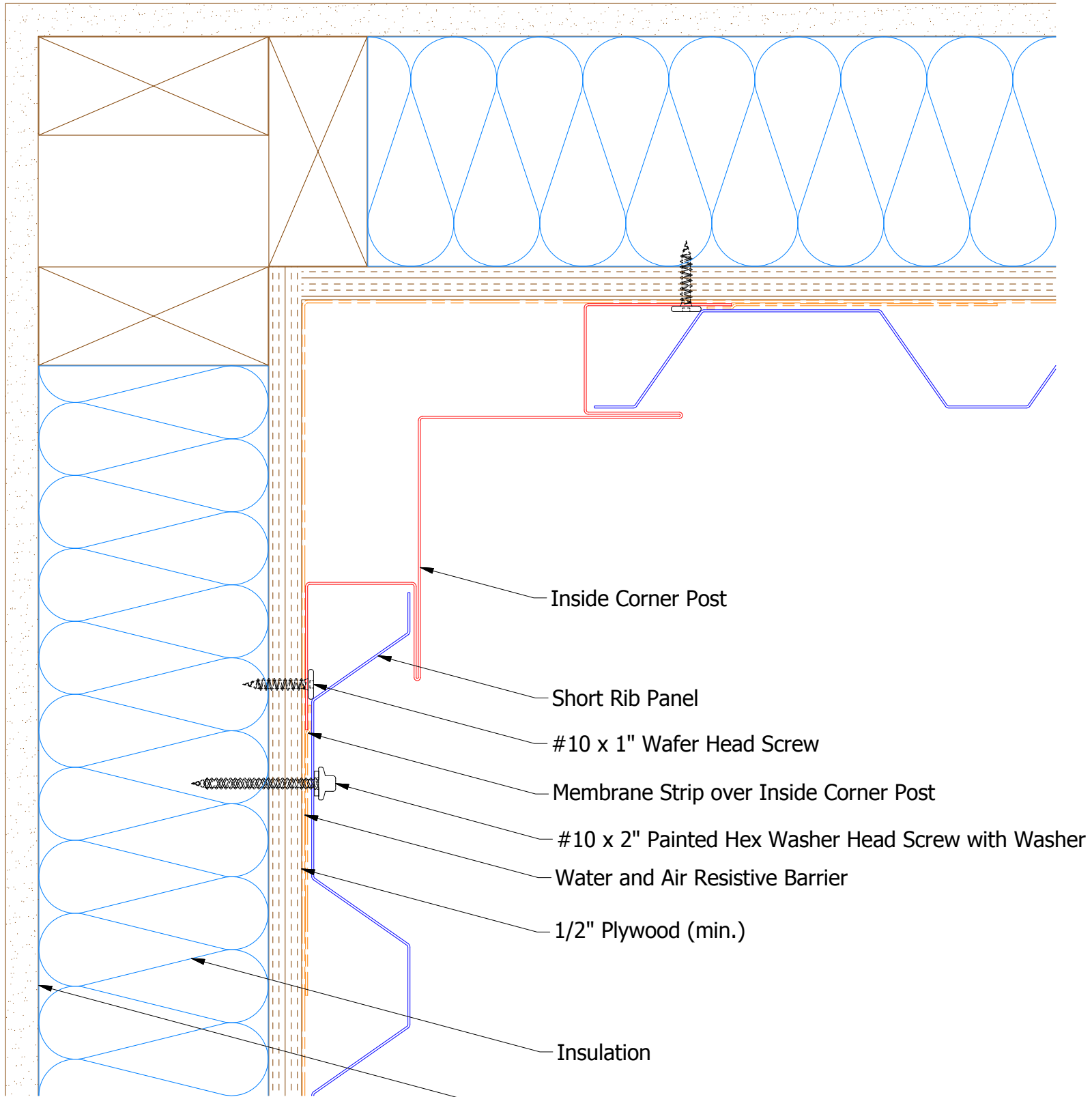
Vertical Panel



BWA680 - Angle Trim

					TITLE Belvedere Short Rib Endwall Detail			
					DWG. NO.		DR KRK	DATE 6/12/2015
							APP DAS	DATE 7/21/16
					MATERIAL		SH. SIZE B	SCALE X:X
REV. NO.	DATE	DESCRIPTION OF REVISION	BY	APP				

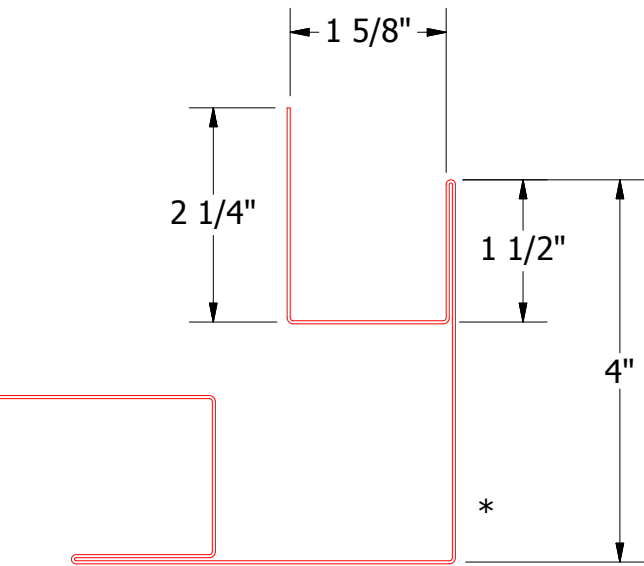
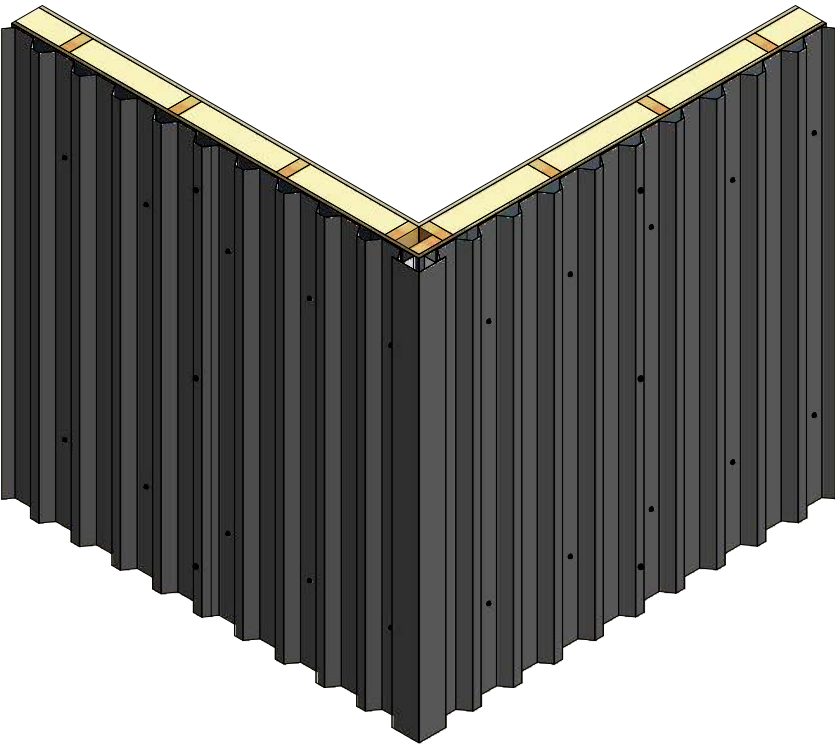
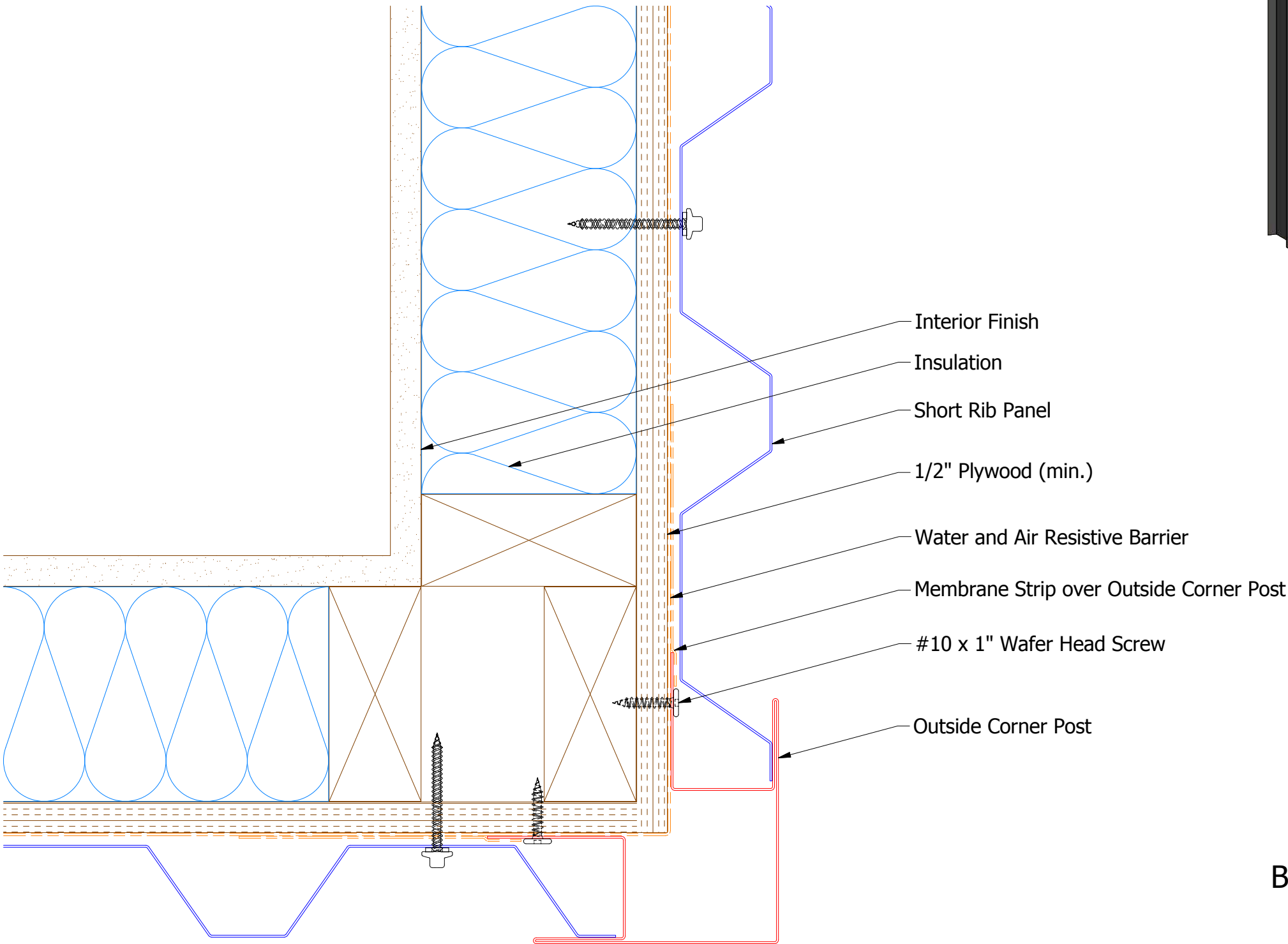
Vertical Panel




BWA601 - Inside Corner Post

					Belvedere Short Rib Inside Corner Detail				
					DWG. NO.			DR	DATE
								KRK	6/12/2015
					MATERIAL			APP	DATE
								DAS	7/21/16
REV. NO.	DATE	DESCRIPTION OF REVISION			BY	APP	SH. SIZE	SCALE	
							B	X:X	

Vertical Panel



BWA602 - Outside Corner Post

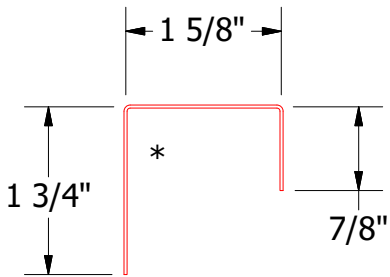
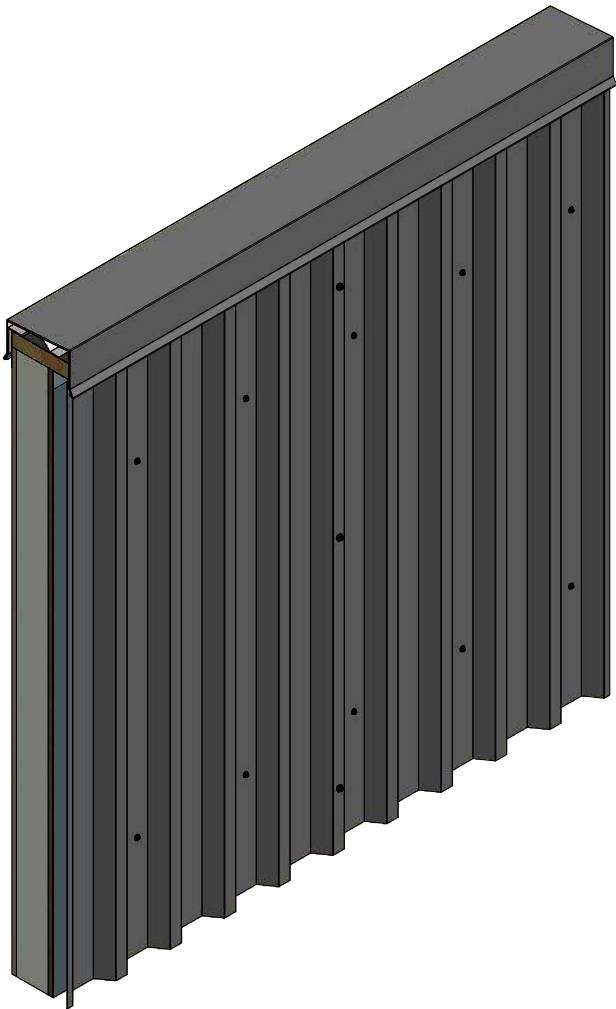
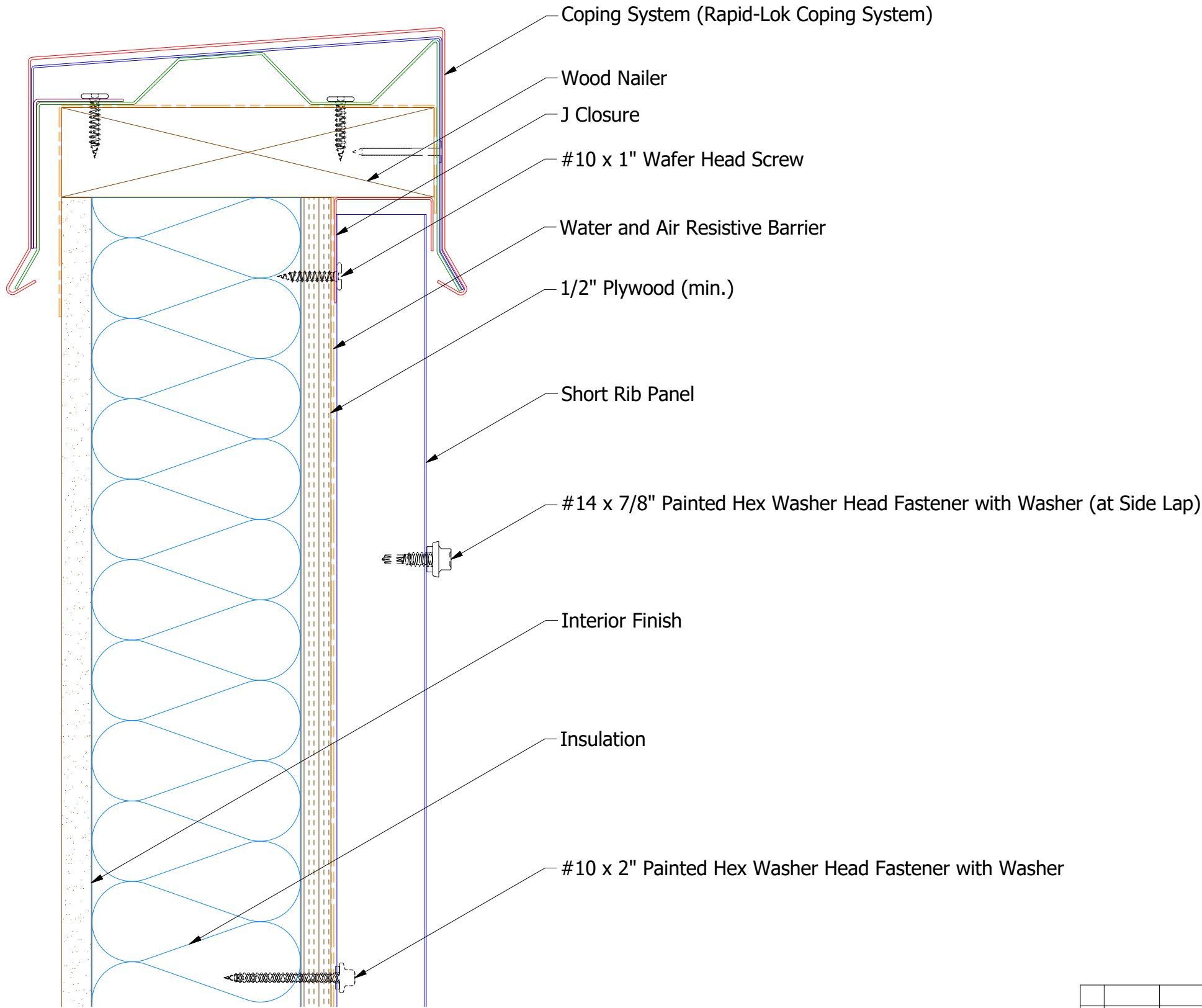


ATAS INTERNATIONAL, INC
Allentown PA
610-395-8445
Mesa AZ
480-558-7210

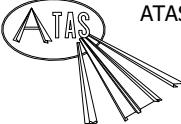
TITLE Belvedere Short Rib Outside Corner Detail			
DWG. NO.		DR KRK	DATE 6/15/2015
MATERIAL		APP DAS	DATE 7/21/16
REV. NO.	DATE	DESCRIPTION OF REVISION	BY APP
			SH. SIZE B
			SCALE X:X

REV. NO.	DATE	DESCRIPTION OF REVISION	BY	APP

Vertical Panel



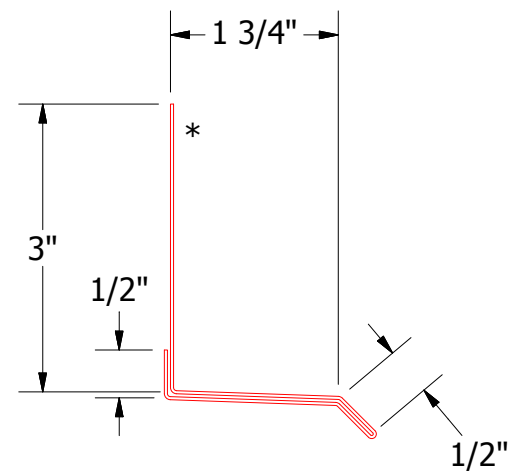
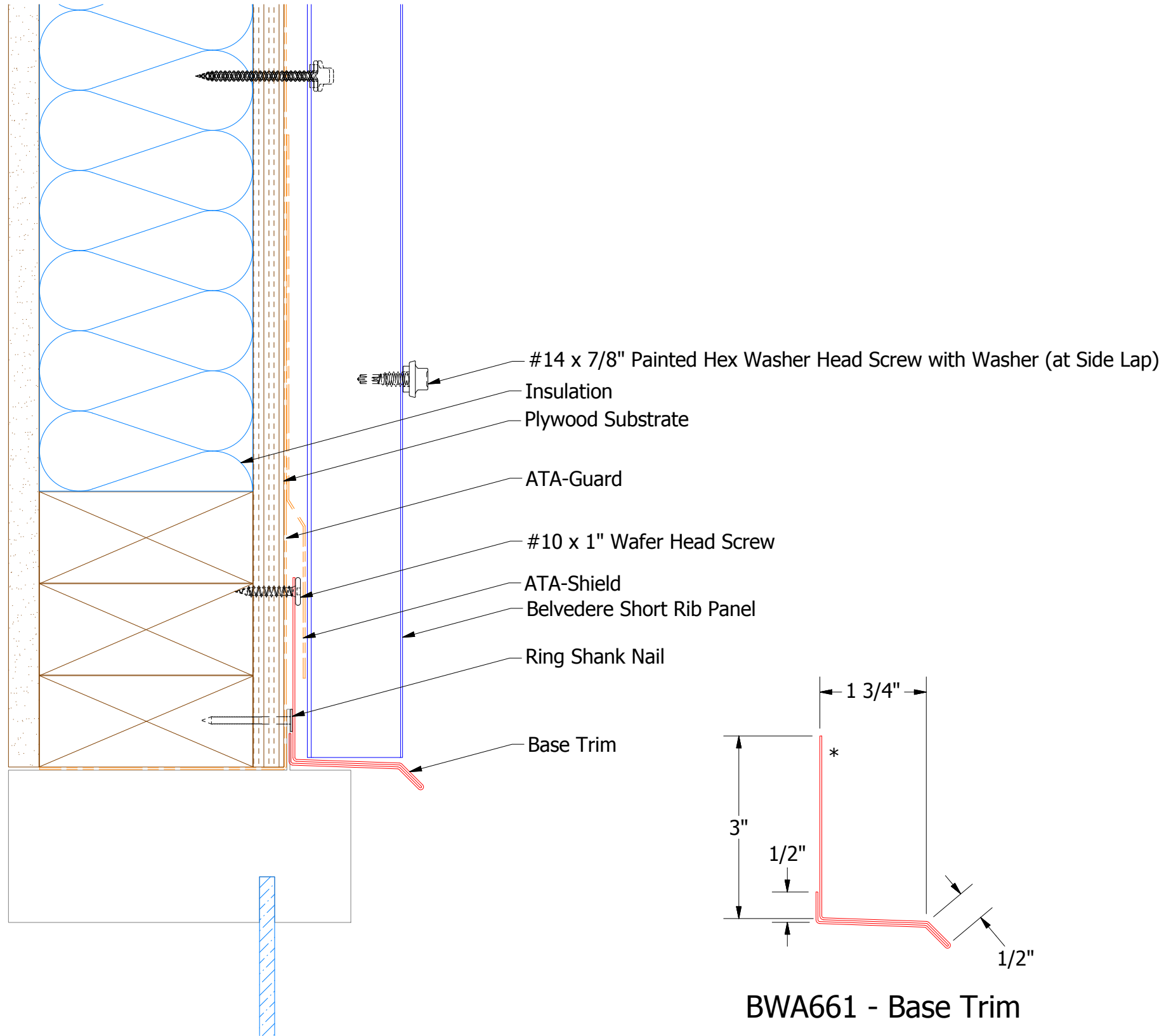
BWA270 - J Closure



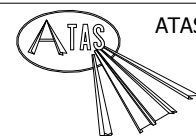
ATAS INTERNATIONAL, INC
Allentown PA
610-395-8445
Mesa AZ
480-558-7210

TITLE			
Belvedere Short Rib Top of Wall Detail			
DWG. NO.		DR	DATE
		KRK	6/15/2015
APP		DAS	DATE
			7/21/16
MATERIAL		SH. SIZE	SCALE
		B	X:X

REV. NO.	DATE	DESCRIPTION OF REVISION	BY	APP



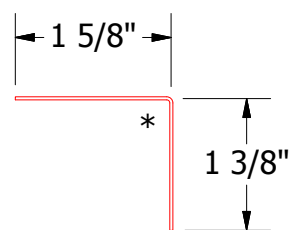
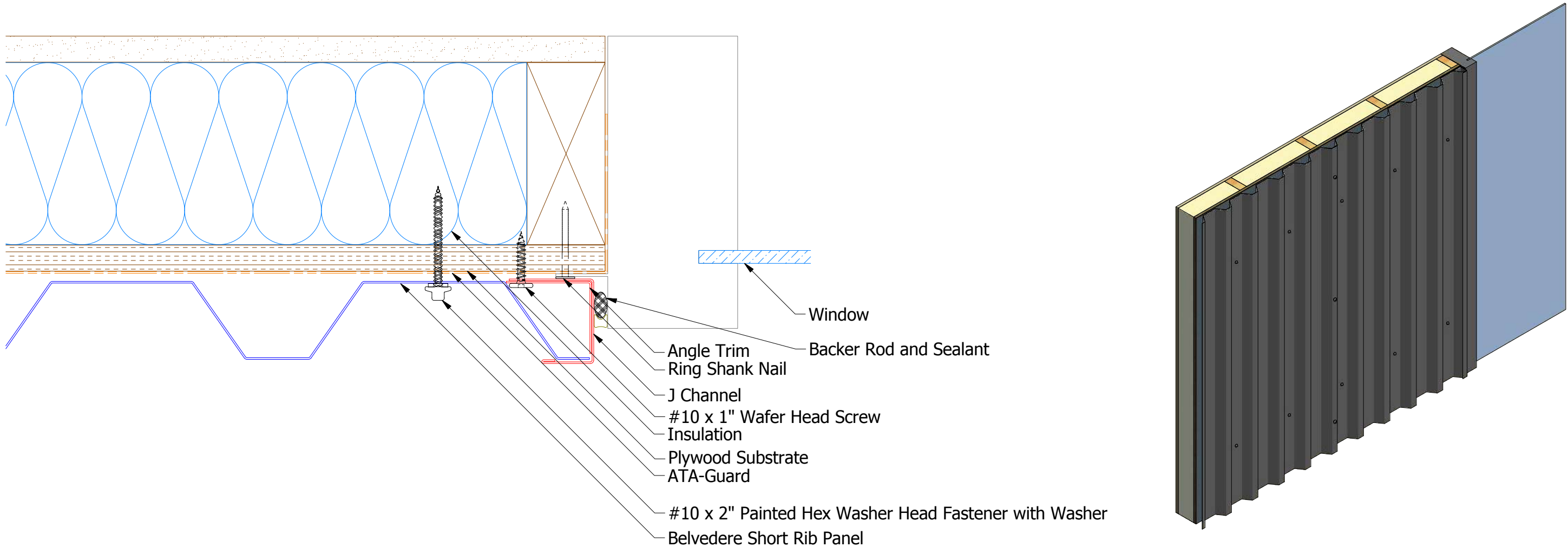
BWA661 - Base Trim



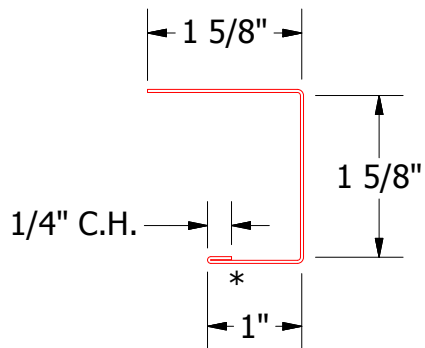
ATAS INTERNATIONAL, INC
Allentown PA
610-395-8445
Mesa AZ
480-558-7210

TITLE			
Belvedere Short Rib Head Window Flange Detail			
DWG. NO.		DR	DATE
		MBP	8/1/2018
		APP	DATE
MATERIAL		SH. SIZE	SCALE
		B	X:X

REV. NO.	DATE	DESCRIPTION OF REVISION	BY	APP

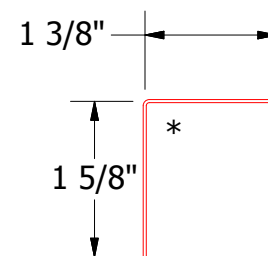
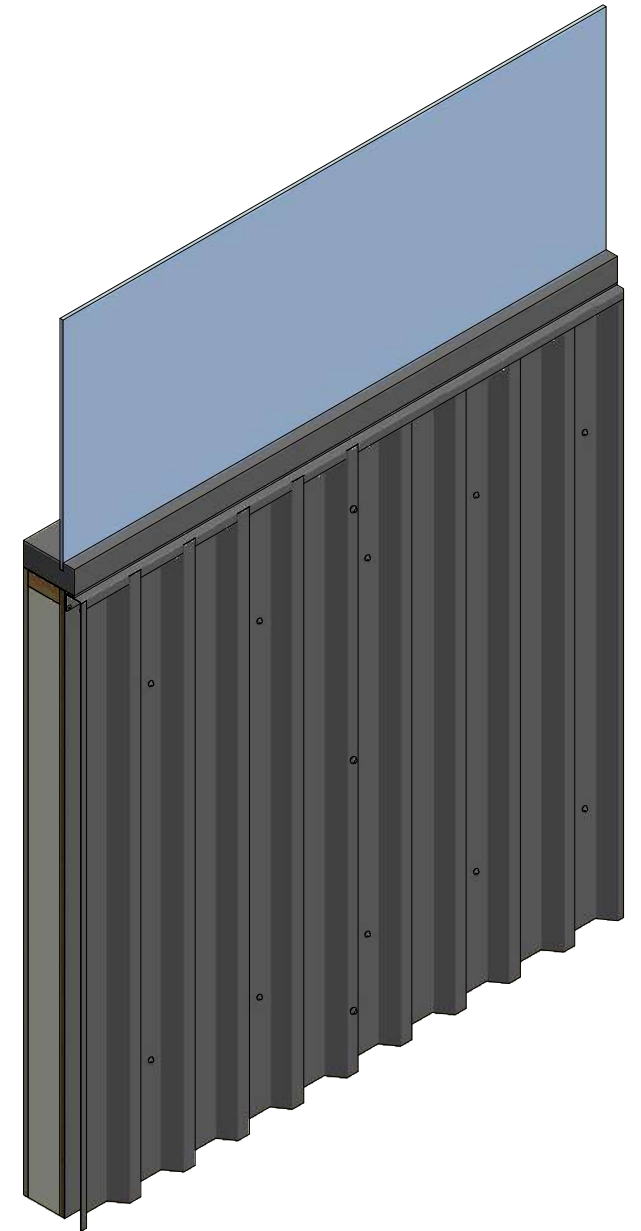
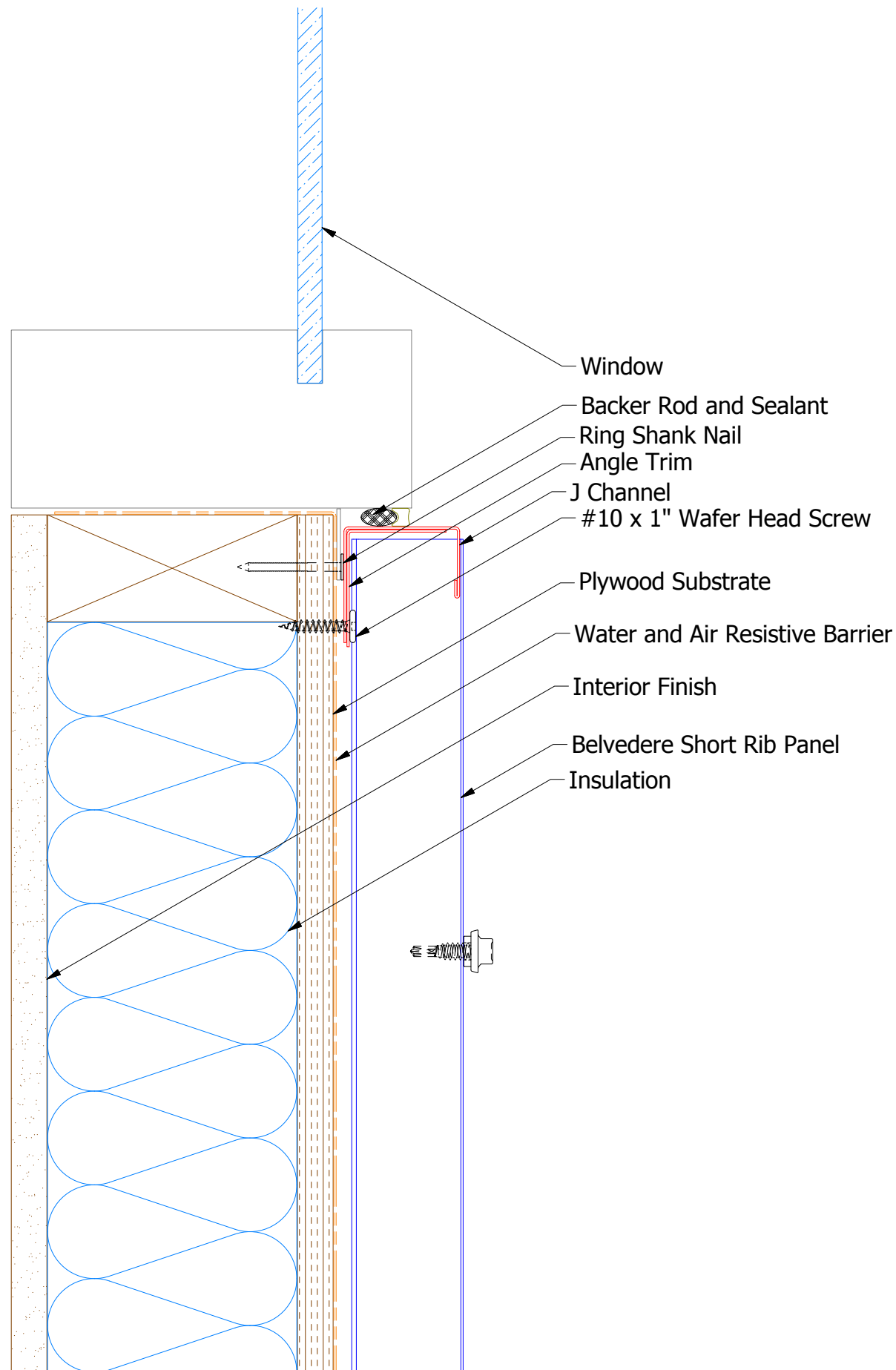


BWA680 - Angle Trim

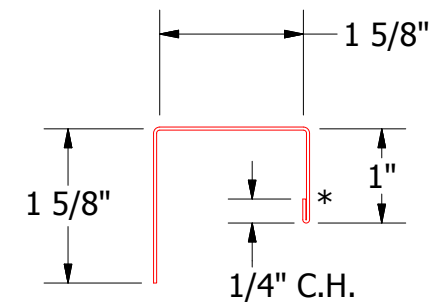


BWA158 - J Channel

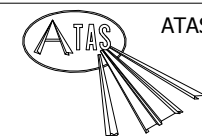
						Belvedere Short Rib Jamb Window Flange Detail			
						DWG. NO.	DR MBP	DATE 8/1/2018	
						MATERIAL		APP	DATE
REV. NO.	DATE	DESCRIPTION OF REVISION		BY	APP	SH. SIZE B		SCALE	X:X



BWA680 - Angle Trim



BWA158 - J Channel

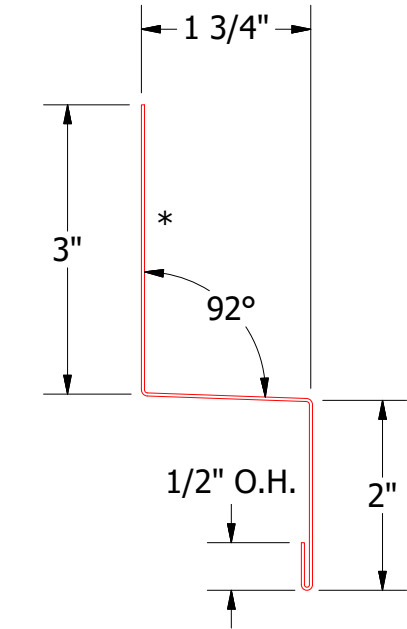
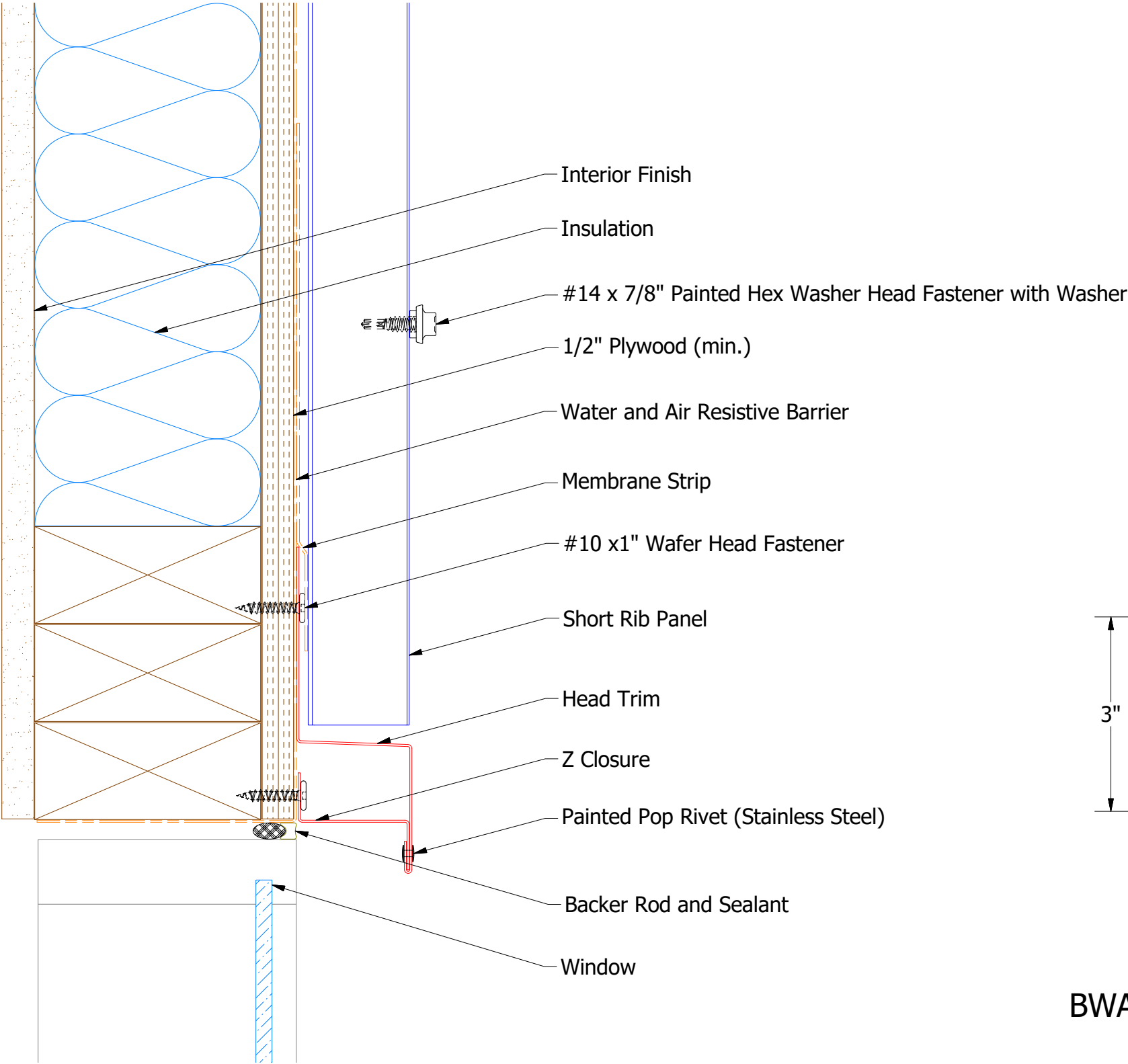


ATAS INTERNATIONAL, INC
Allentown PA
610-395-8445
Mesa AZ
480-558-7210

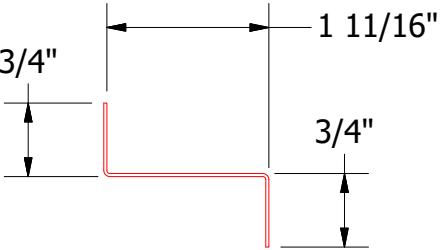
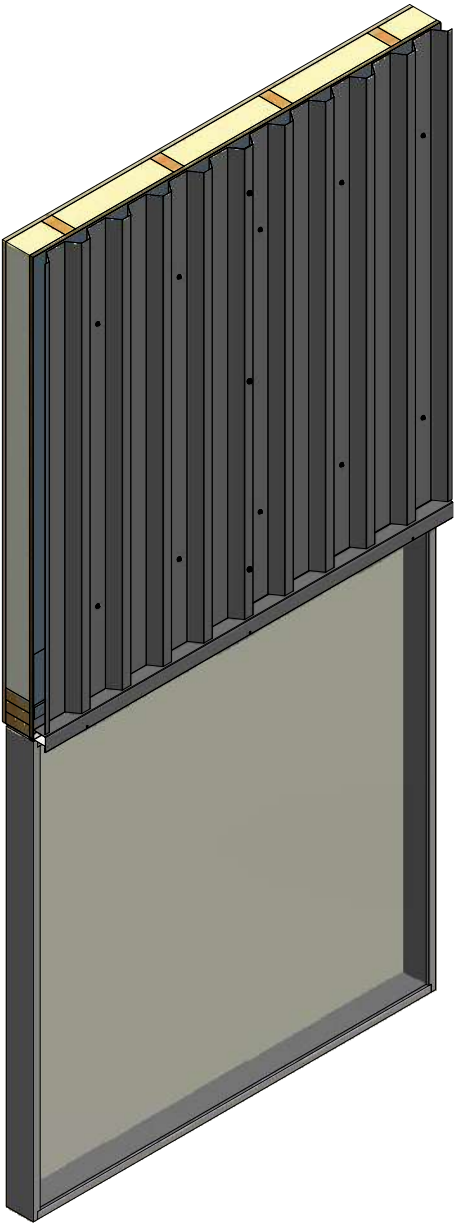
TITLE
Belvedere Short Rib Window Sill Flange Detail

REV. NO.	DATE	DESCRIPTION OF REVISION	BY	APP	DWG. NO.	DR MBP	DATE 8/1/2018
						APP	DATE
					MATERIAL	SH. SIZE B	SCALE X:X

Vertical Panel



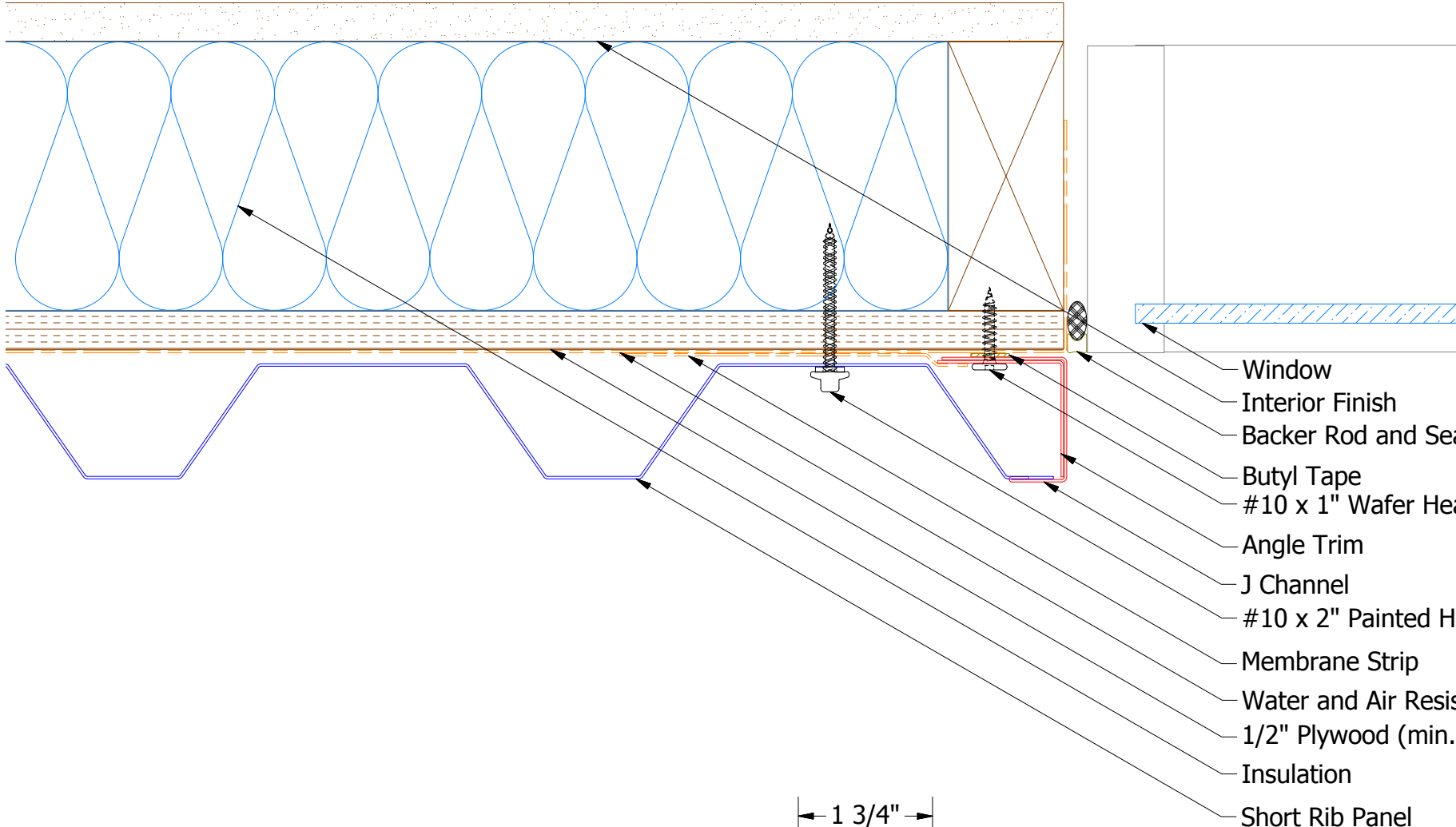
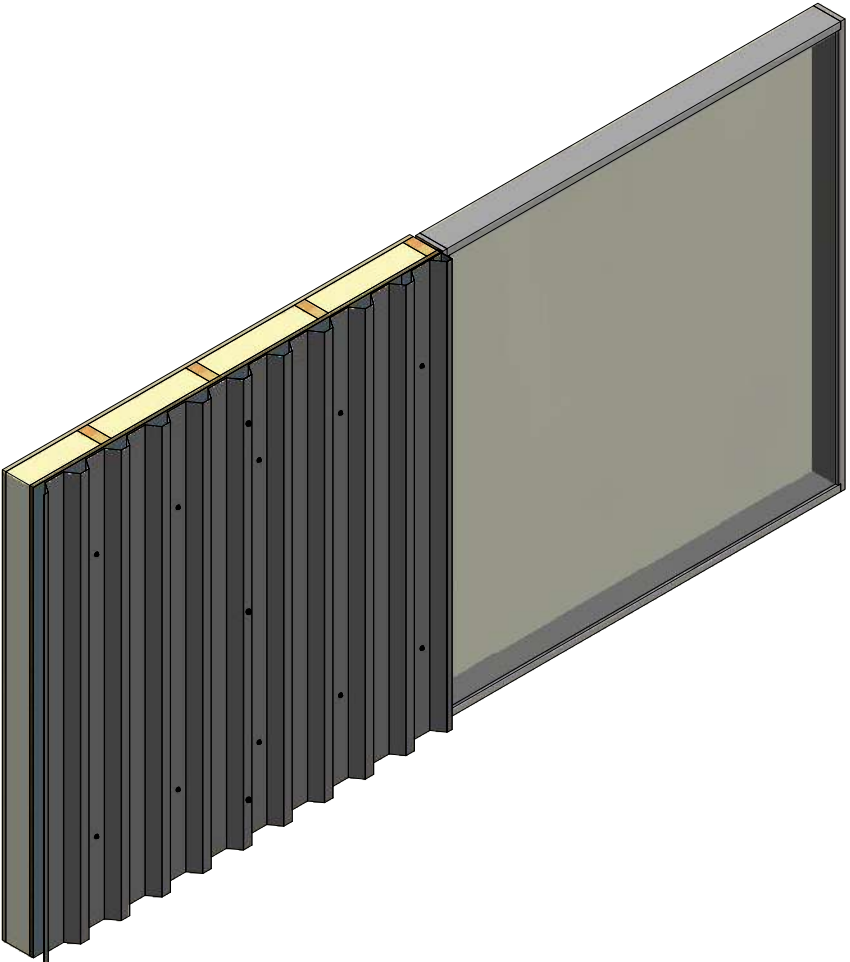
BWA550 - Head Trim



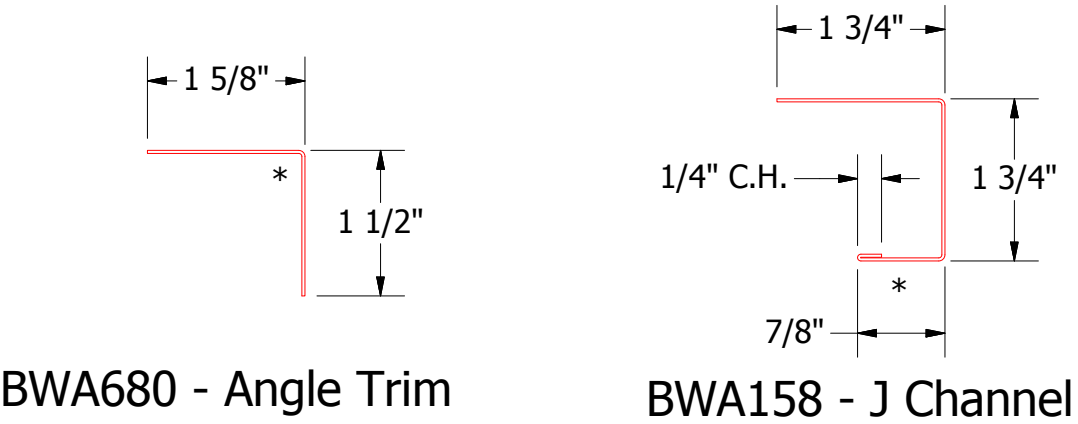
BWA691 - Head Angle Trim (Existing)

				ATAS INTERNATIONAL, INC Allentown PA 610-395-8445 Mesa AZ 480-558-7210			
				Short Rib Existing Head Detail			
				DWG. NO.	DR	DATE	6/8/2018
				APP	DMR	DATE	
				MATERIAL	SH. SIZE	SCALE	X:X
REV. NO.	DATE	DESCRIPTION OF REVISION	BY	APP	B		

Vertical Panel



- Window
- Interior Finish
- Backer Rod and Sealant
- Butyl Tape
- #10 x 1" Wafer Head Fastener
- Angle Trim
- J Channel
- #10 x 2" Painted Hex Washer Head Fastener with Washer
- Membrane Strip
- Water and Air Resistive Barrier
- 1/2" Plywood (min.)
- Insulation
- Short Rib Panel



BWA680 - Angle Trim

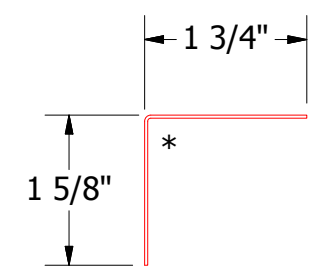
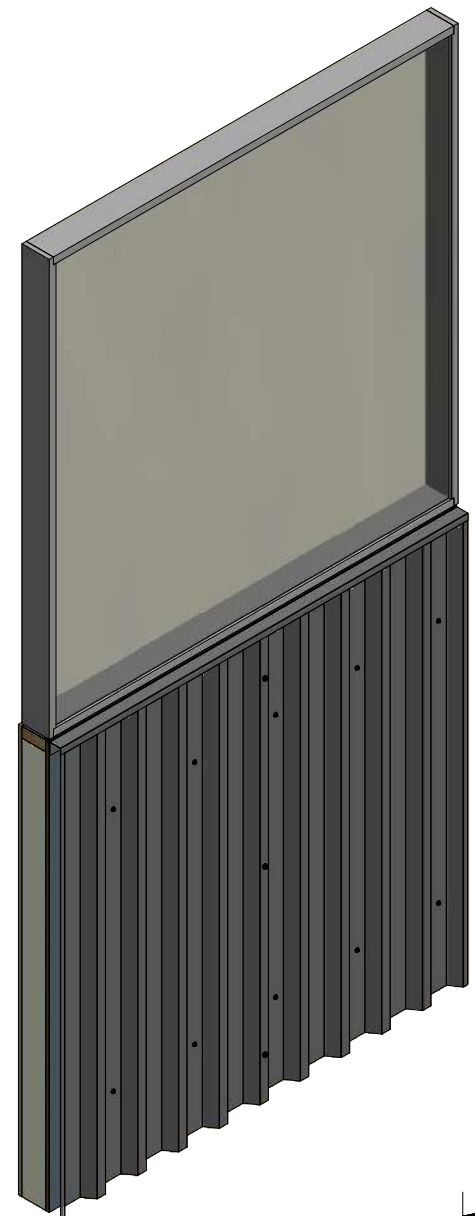
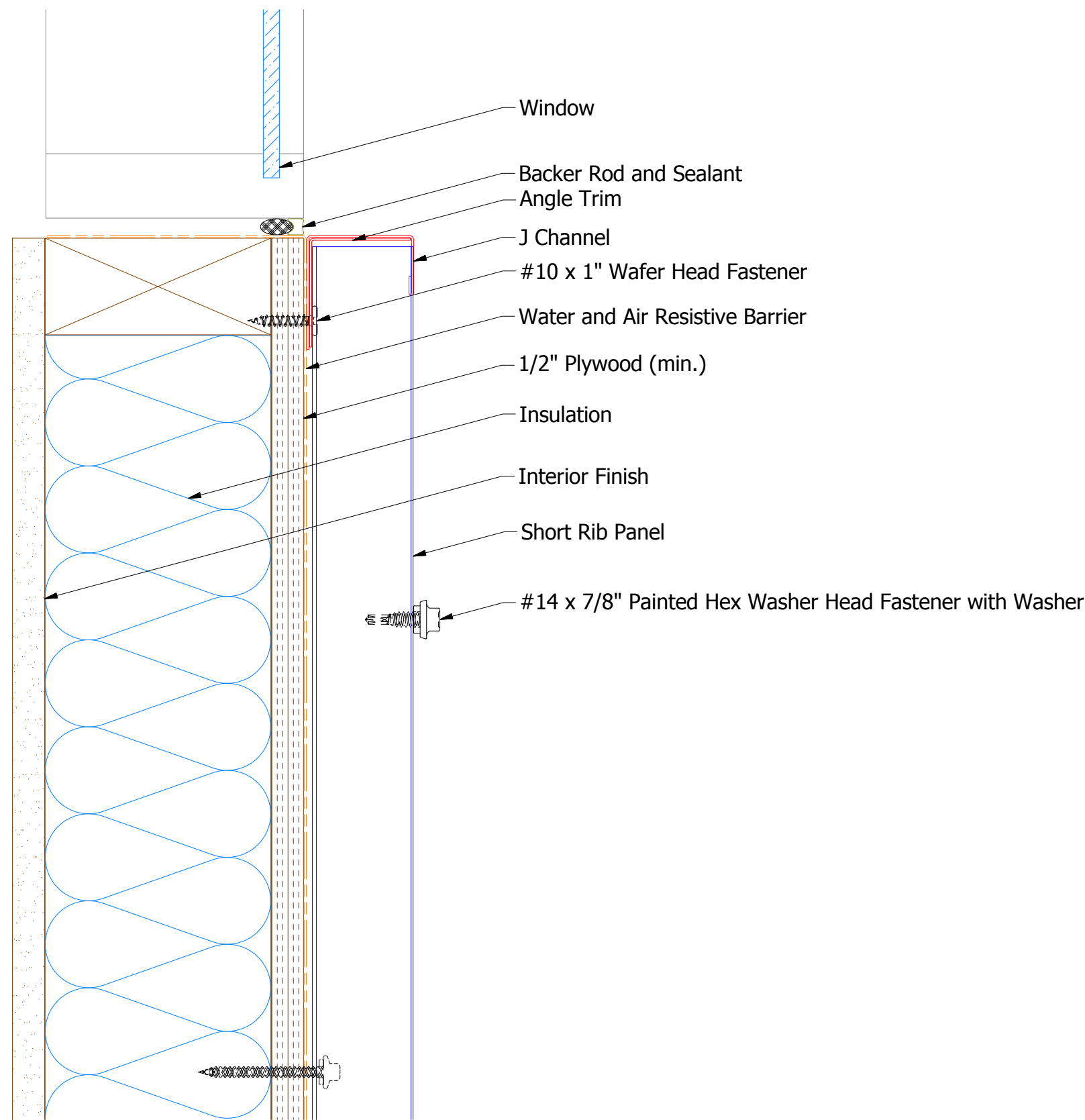
BWA158 - J Channel

				TITLE	
				Short Rib Existing Jamb Detail	
REV. NO.		DATE		DWG. NO.	
				DR DMR	
				APP	
				DATE	
				MATERIAL	
				SH. SIZE B	
				SCALE X:X	

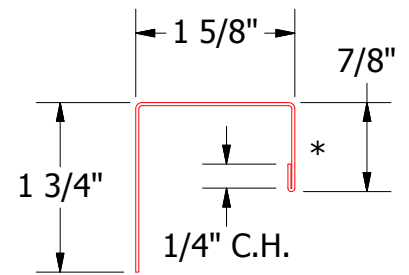


ATAS INTERNATIONAL, INC
Allentown PA
610-395-8445
Mesa AZ
480-558-7210

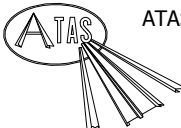
Vertical Panel



BWA680 - Angle Trim



BWA158 - J Channel

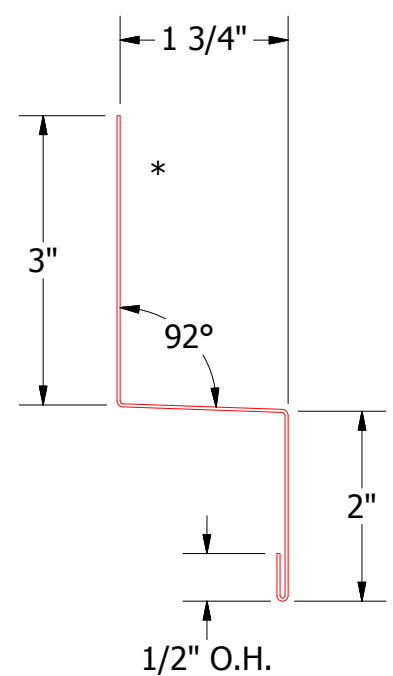
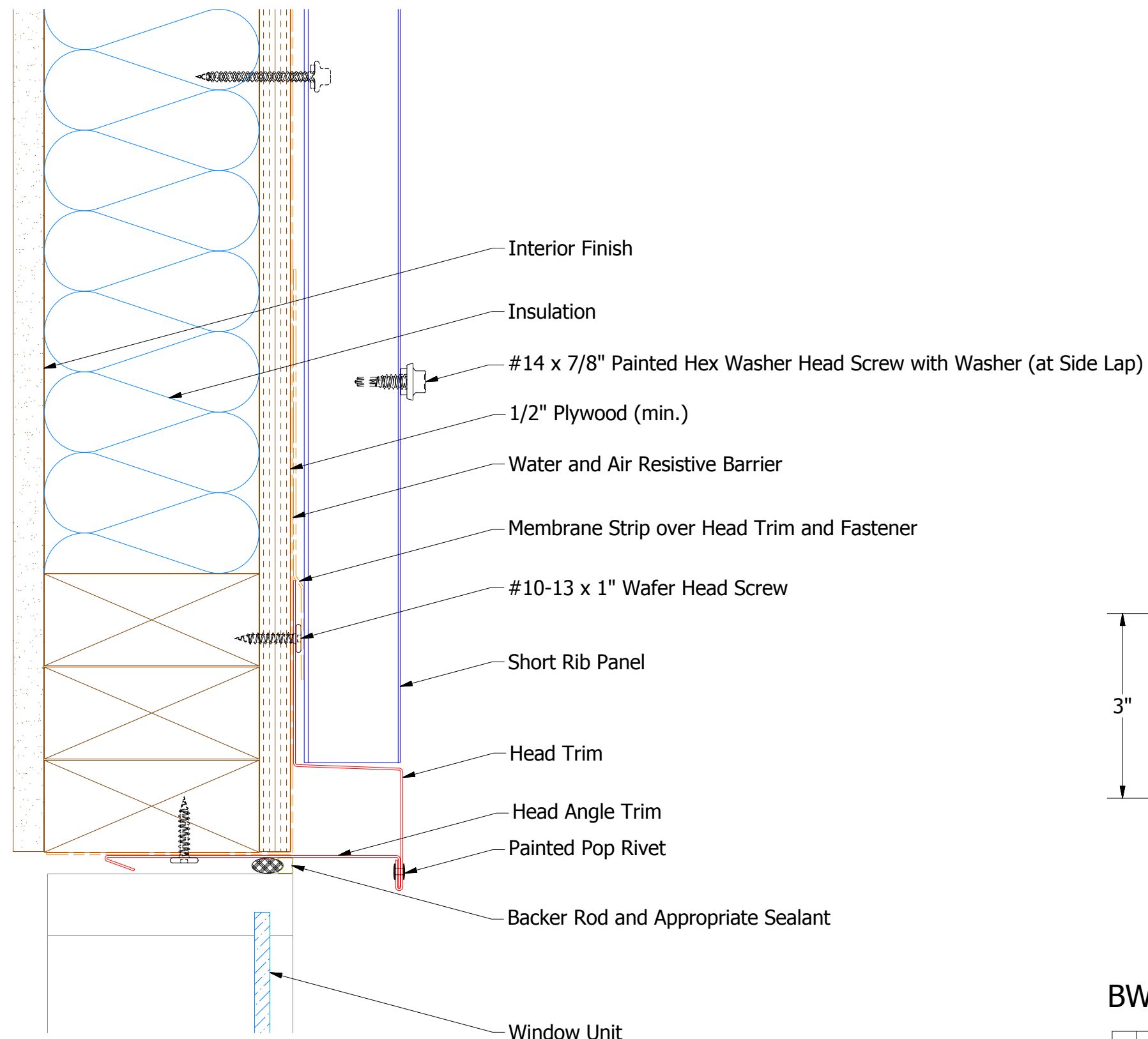


ATAS INTERNATIONAL, INC
Allentown PA
610-395-8445
Mesa AZ
480-558-7210

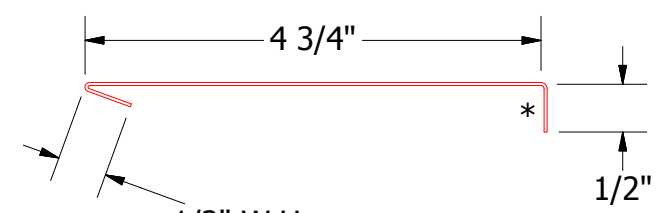
TITLE Short Rib Existing Window Sill Detail			
DWG. NO.		DR DMR	DATE 6/19/2018
APP		DATE	
MATERIAL		SH. SIZE B	SCALE X:X

REV. NO.	DATE	DESCRIPTION OF REVISION	BY	APP

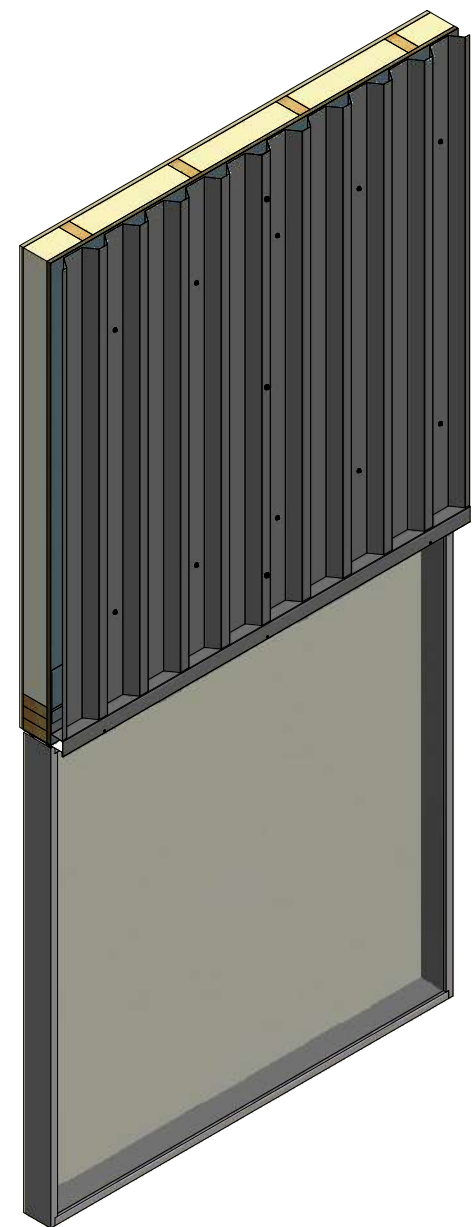
Vertical Panel

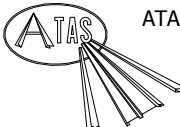


BWA550 - Head Trim



BWA690 - Head Angle Trim

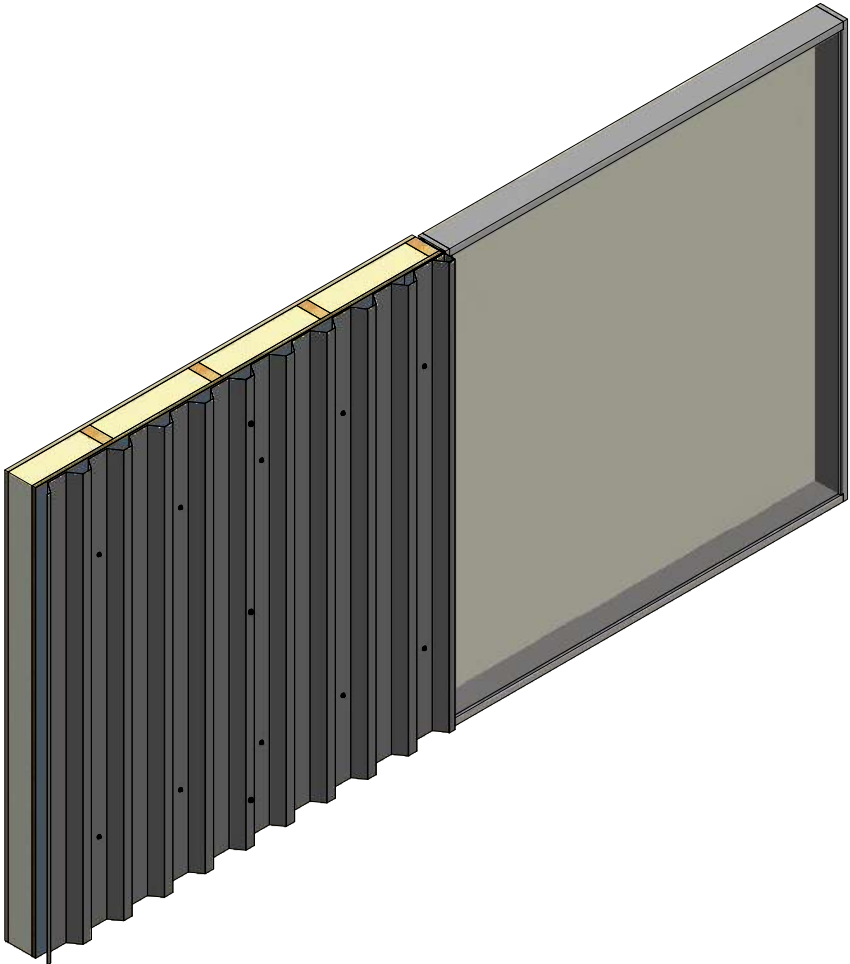
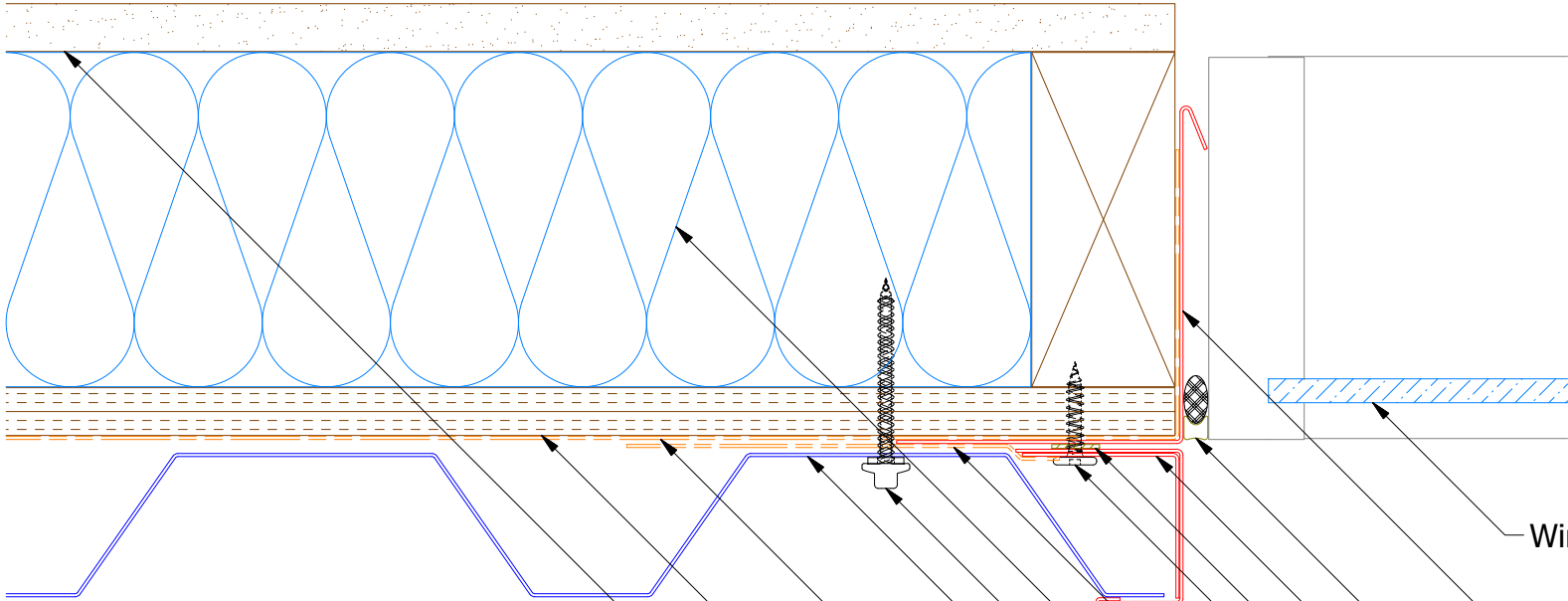




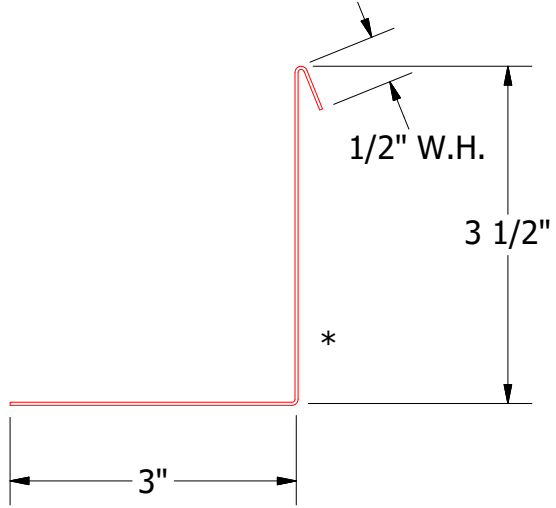
ATAS INTERNATIONAL, INC
Allentown PA
610-395-8445
Mesa AZ
480-558-7210

TITLE Belvedere Short Rib Head Detail			
DWG. NO.		DR KRK	DATE 6/12/2015
MATERIAL		APP DAS	DATE 7/21/16
REV. NO.	DATE	DESCRIPTION OF REVISION	BY APP
			SH. SIZE B SCALE X:X

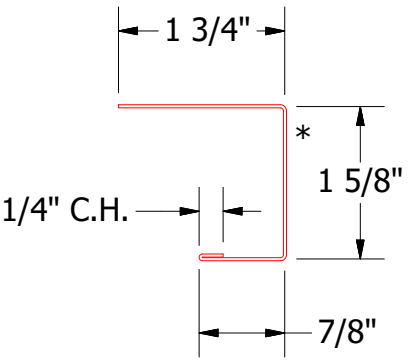
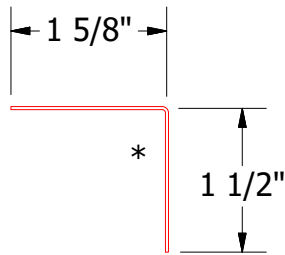
Vertical Panel



- Window Unit
- Angle Trim with Return
- Backer Rod and Appropriate Sealant
- Angle Trim
- Butyl Tape
- #10 x 1" Wafer Head Screw
- J Channel
- Membrane Strip over J Channel and Angle Trim
- Insulation
- #10 x 2" Painted Hex Washer Head Fastener with Washer
- Short Rib Panel
- Water and Air Resistive Barrier
- 1/2" Plywood (min.)
- Interior Finish



BWA680 - Angle Trim

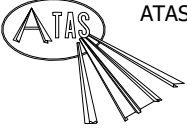


BWA158 - J Channel

BWA683 - Angle Trim with Return

REV. NO.				DATE				DESCRIPTION OF REVISION				BY		APP	

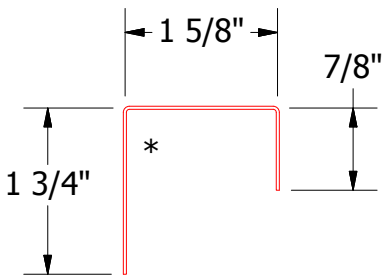
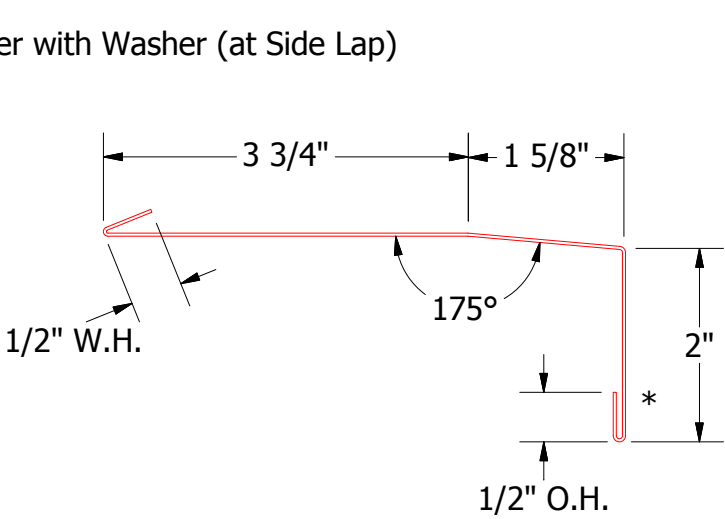
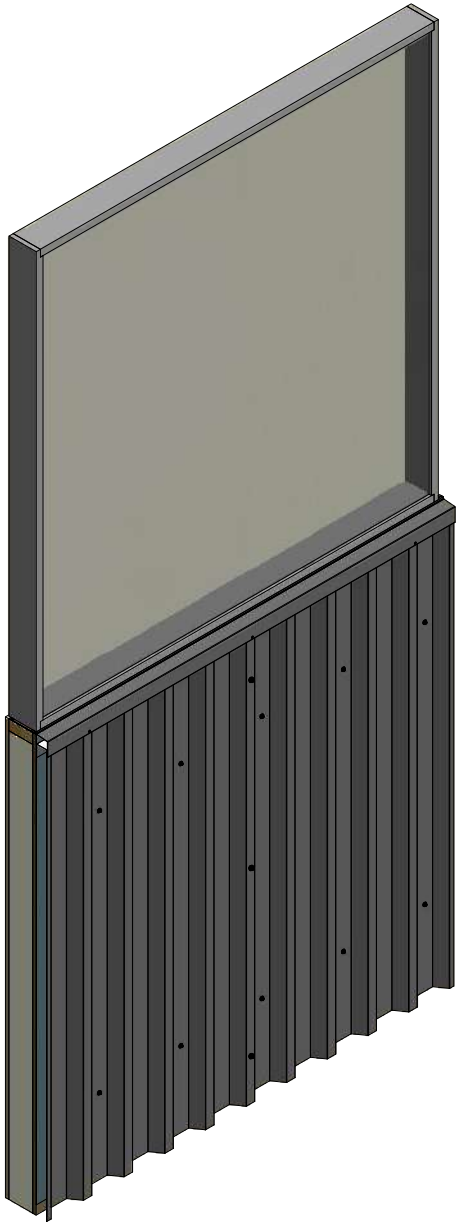
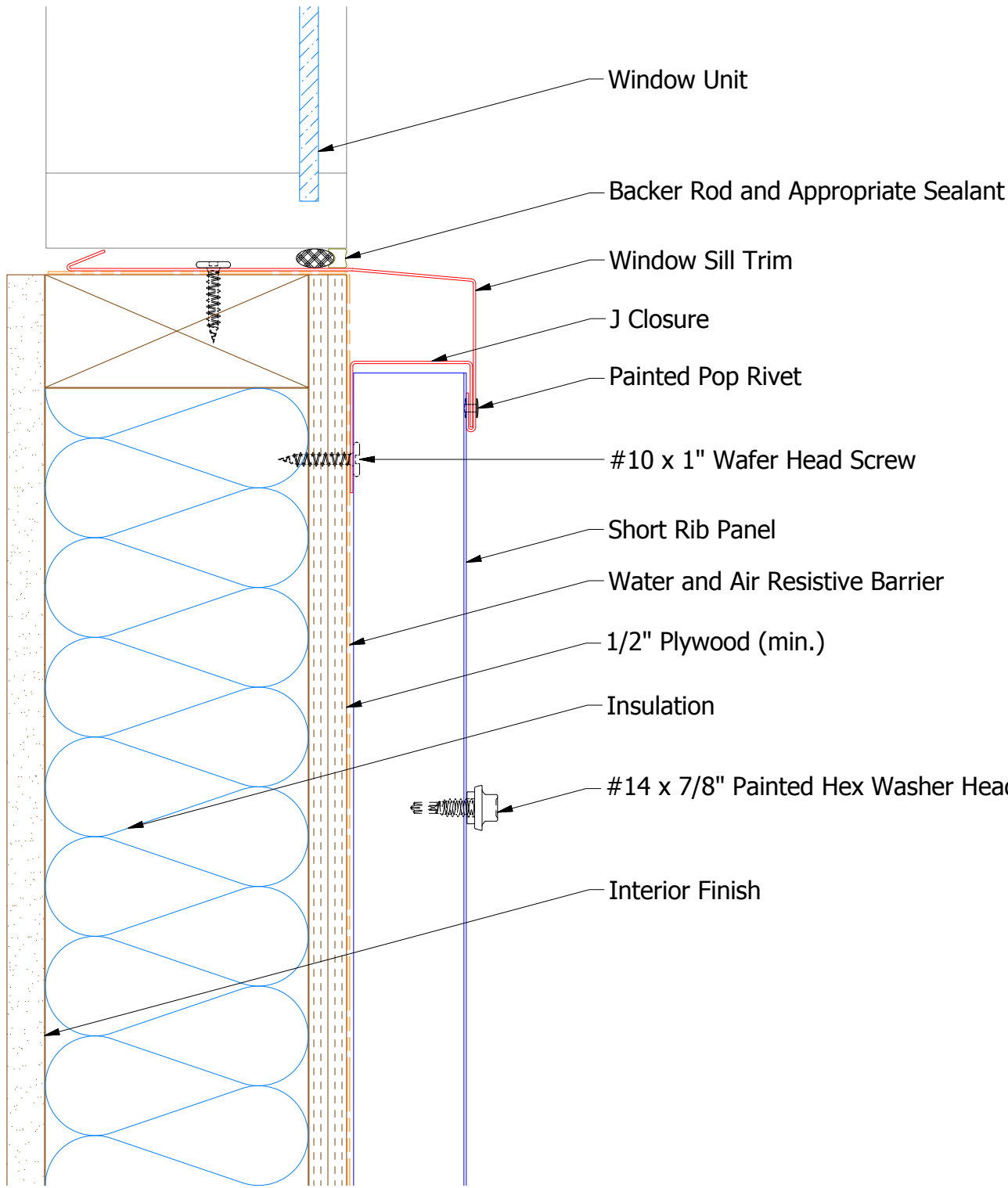
TITLE		Belvedere Short Rib Jamb Detail			
DWG. NO.		DR KRK		DATE 6/15/2015	
MATERIAL		APP DAS		DATE 7/21/16	
SH. SIZE		B		SCALE X:X	



ATAS INTERNATIONAL, INC
Allentown PA
610-395-8445
Mesa AZ
480-558-7210


TITLE		Belvedere Short Rib Jamb Detail			
DWG. NO.		DR KRK		DATE 6/15/2015	
MATERIAL		APP DAS		DATE 7/21/16	
SH. SIZE		B		SCALE X:X	

Vertical Panel



BWA270 - J Closure

BWA670 - Window Sill Trim



ATAS INTERNATIONAL, INC
Allentown PA
610-395-8445
Mesa AZ
480-558-7210

TITLE Belvedere Short Rib Window Sill Detail			
DWG. NO.		DR KRK	DATE 6/15/2015
MATERIAL		APP DAS	DATE 7/21/16
REV. NO.	DATE	DESCRIPTION OF REVISION	BY APP SH. SIZE B SCALE X:X

REV. NO.	DATE	DESCRIPTION OF REVISION	BY	APP