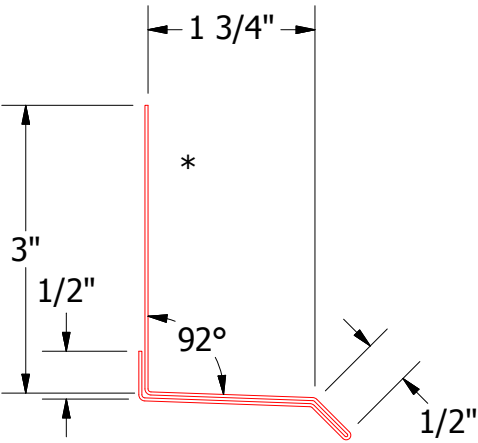
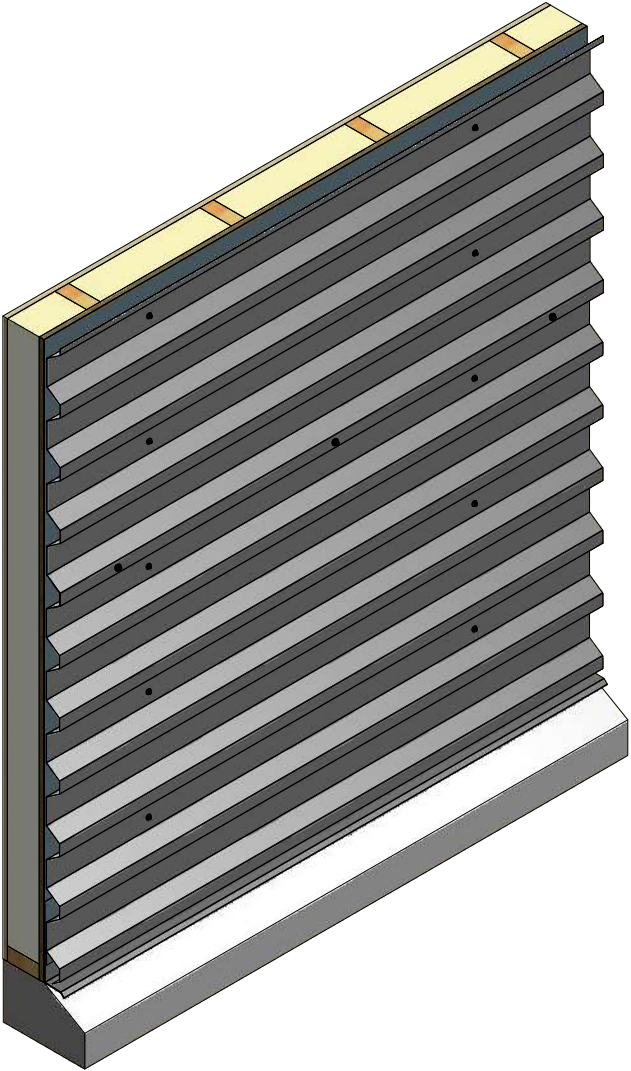
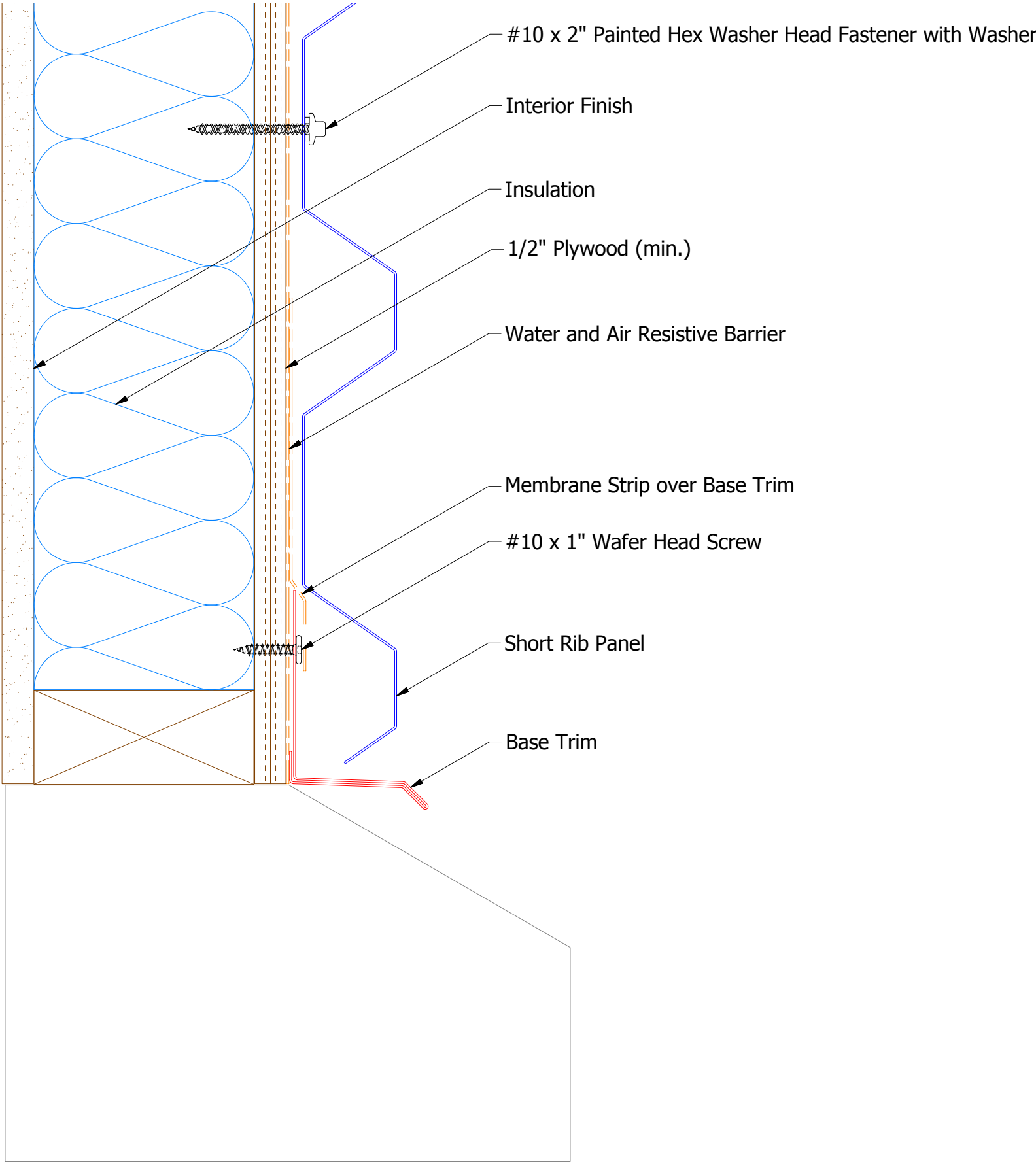
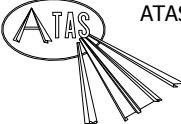


					TITLE Belvedere Short Rib Panel Profile Detail				
					DWG. NO.			DR KRK	DATE 6/15/2015
					MATERIAL			APP DAS	DATE 7/21/16
REV. NO.	DATE	DESCRIPTION OF REVISION	BY	APP				SH. SIZE B	SCALE X:X

Horizontal Panel



BWA661 - Base Trim

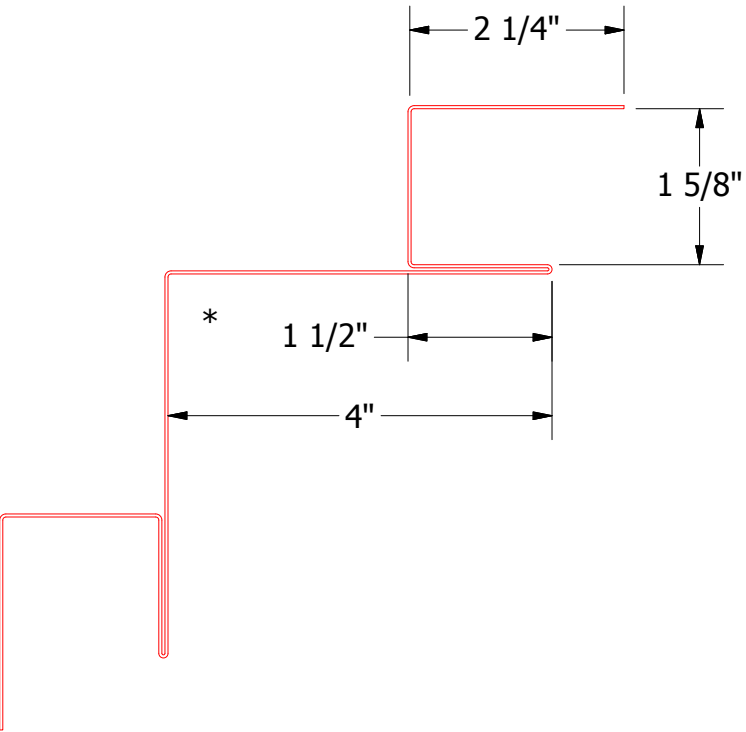
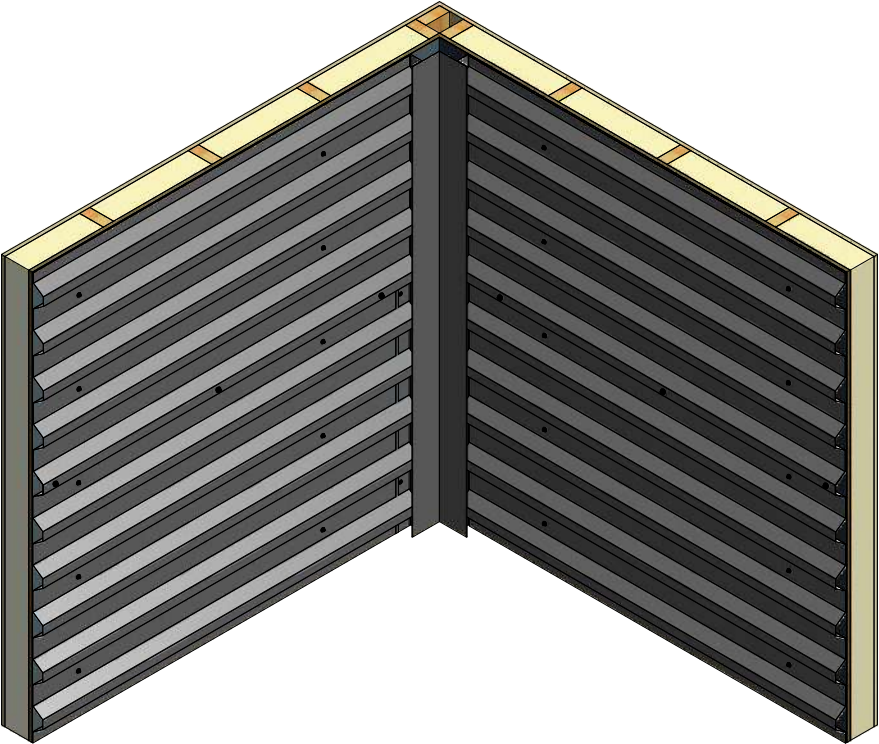
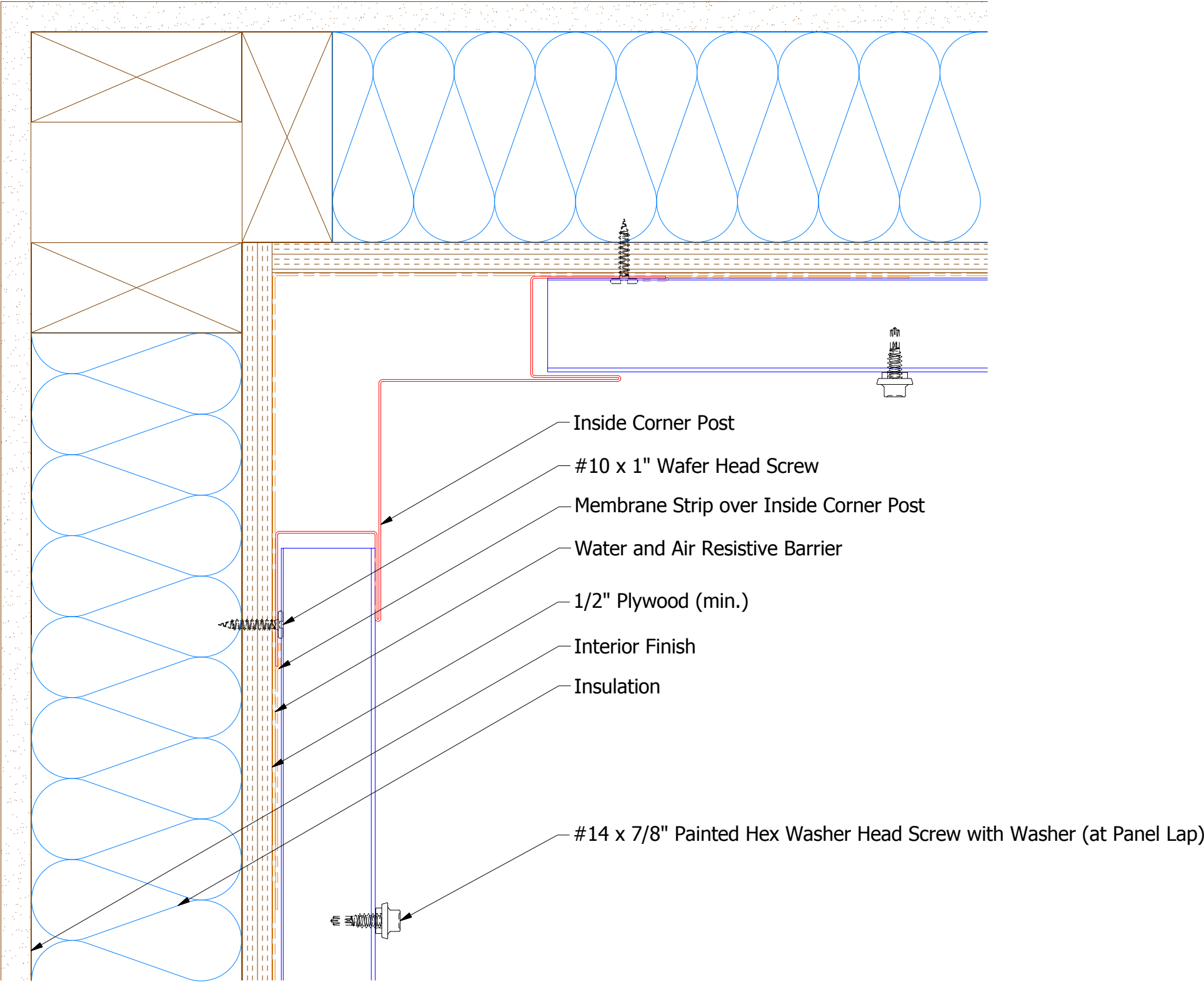


ATAS INTERNATIONAL, INC
Allentown PA
610-395-8445
Mesa AZ
480-558-7210

TITLE Belvedere Short Rib Base Detail			
DWG. NO.		DR KRK	DATE 6/12/2015
MATERIAL		APP DAS	DATE 7/21/16
REV. NO.	DATE	DESCRIPTION OF REVISION	BY APP SH. SIZE B SCALE X:X

REV. NO.	DATE	DESCRIPTION OF REVISION	BY	APP

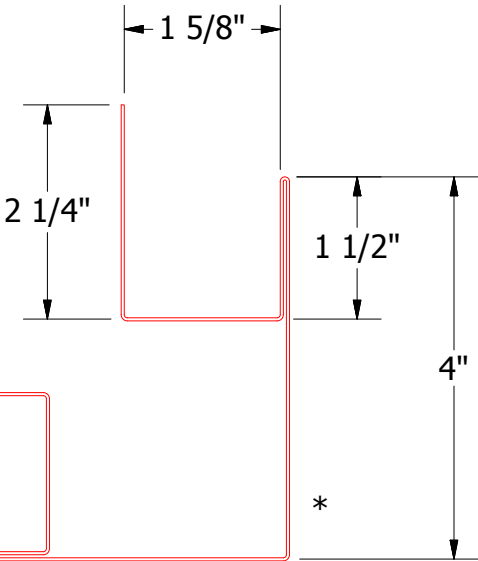
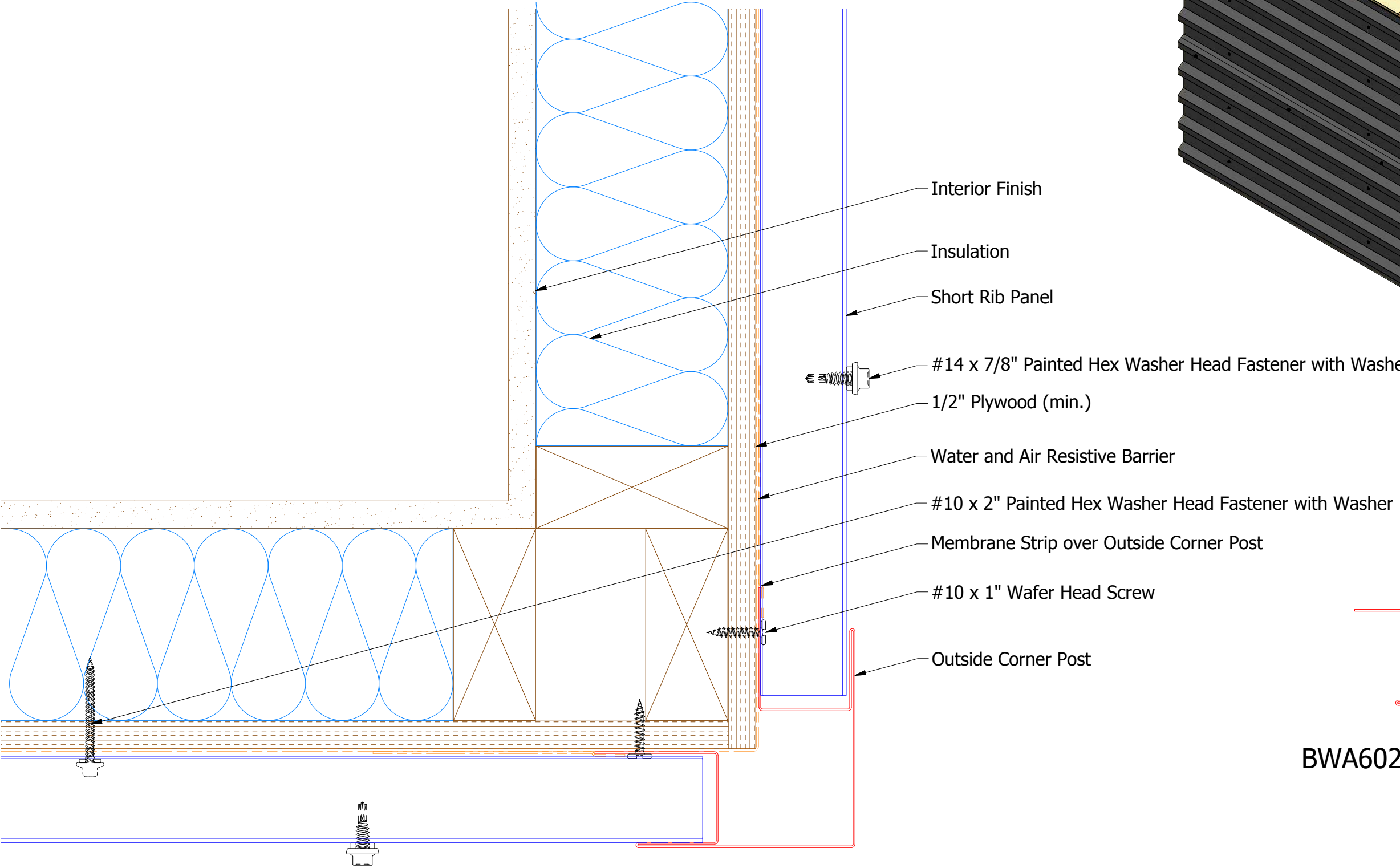
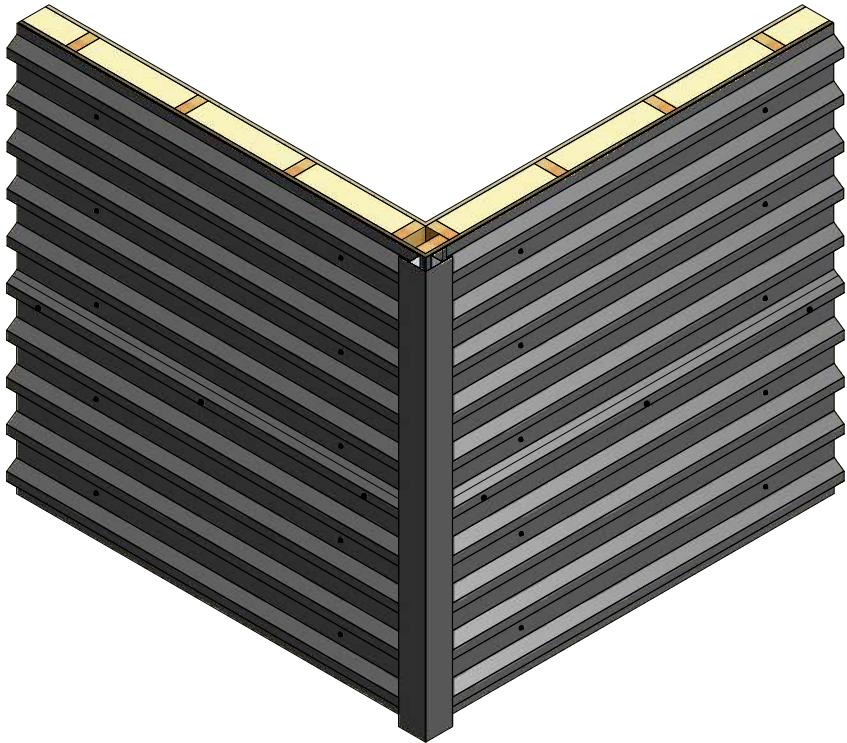
Horizontal Panel




BWA601 - Inside Corner Post

				ATAS INTERNATIONAL, INC Allentown PA 610-395-8445 Mesa AZ 480-558-7210			
				Belvedere Short Rib Inside Corner Detail			
				DWG. NO.		DR KRK	DATE 6/12/2015
						APP DAS	DATE 7/21/16
				MATERIAL		SH. SIZE B	SCALE X:X
REV. NO.	DATE	DESCRIPTION OF REVISION	BY	APP			

Horizontal Panel



BWA602 - Outside Corner Post

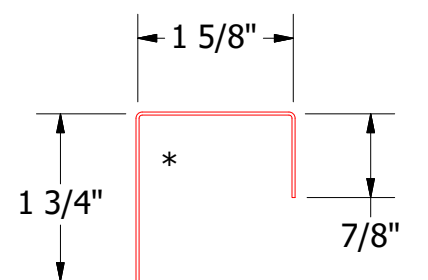
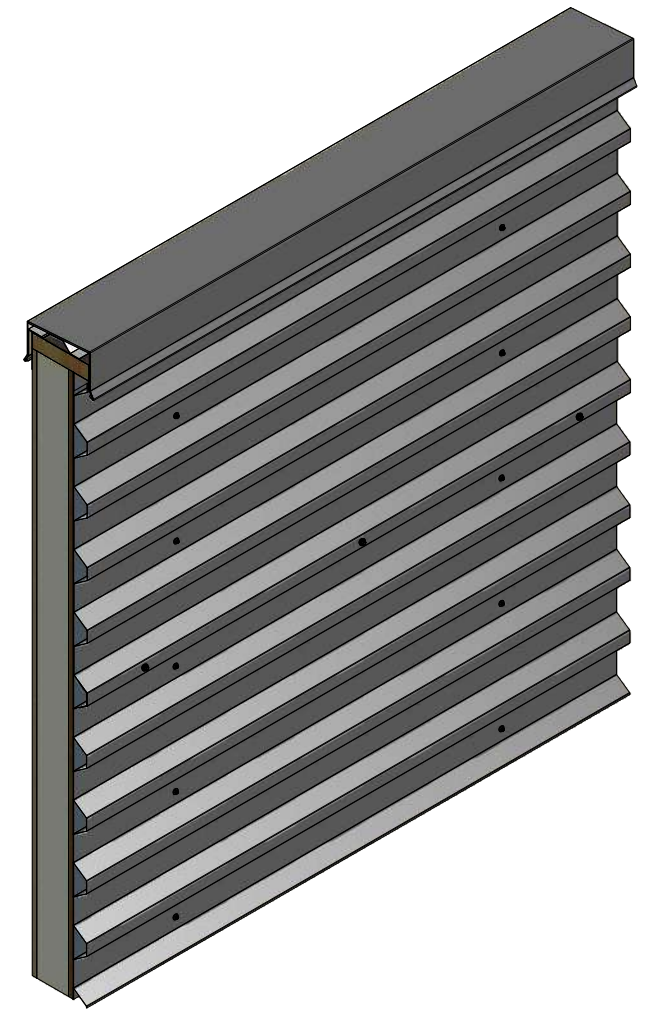
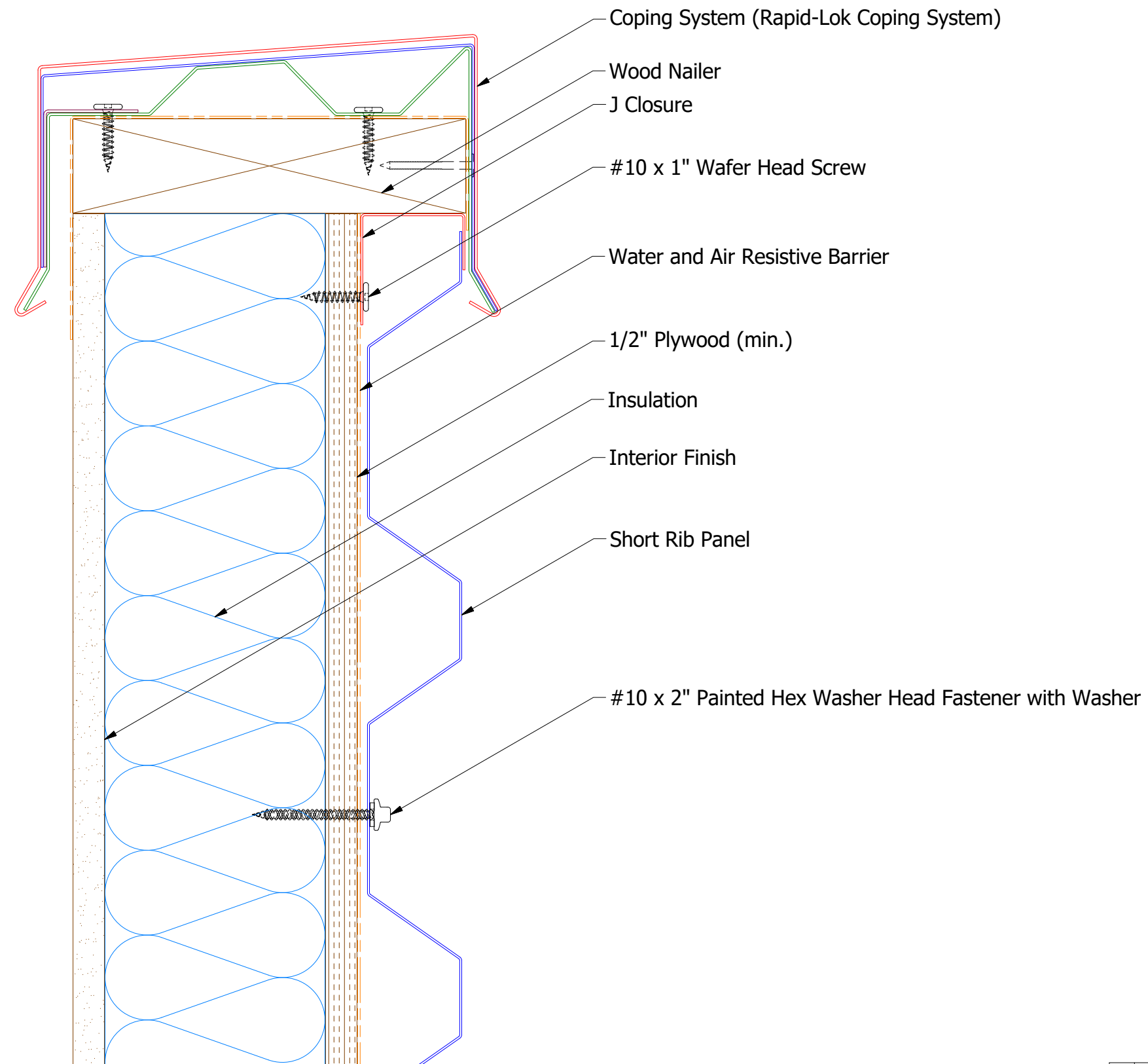


ATAS INTERNATIONAL, INC
Allentown PA
610-395-8445
Mesa AZ
480-558-7210


TITLE Belvedere Short Rib Outside Corner Detail			
DWG. NO.		DR KRK	DATE 6/15/2015
MATERIAL		APP DAS	DATE 7/21/16
SH. SIZE B		SCALE X:X	

REV. NO.	DATE	DESCRIPTION OF REVISION	BY	APP

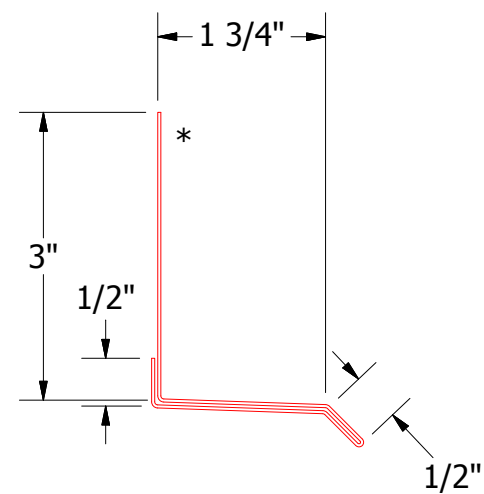
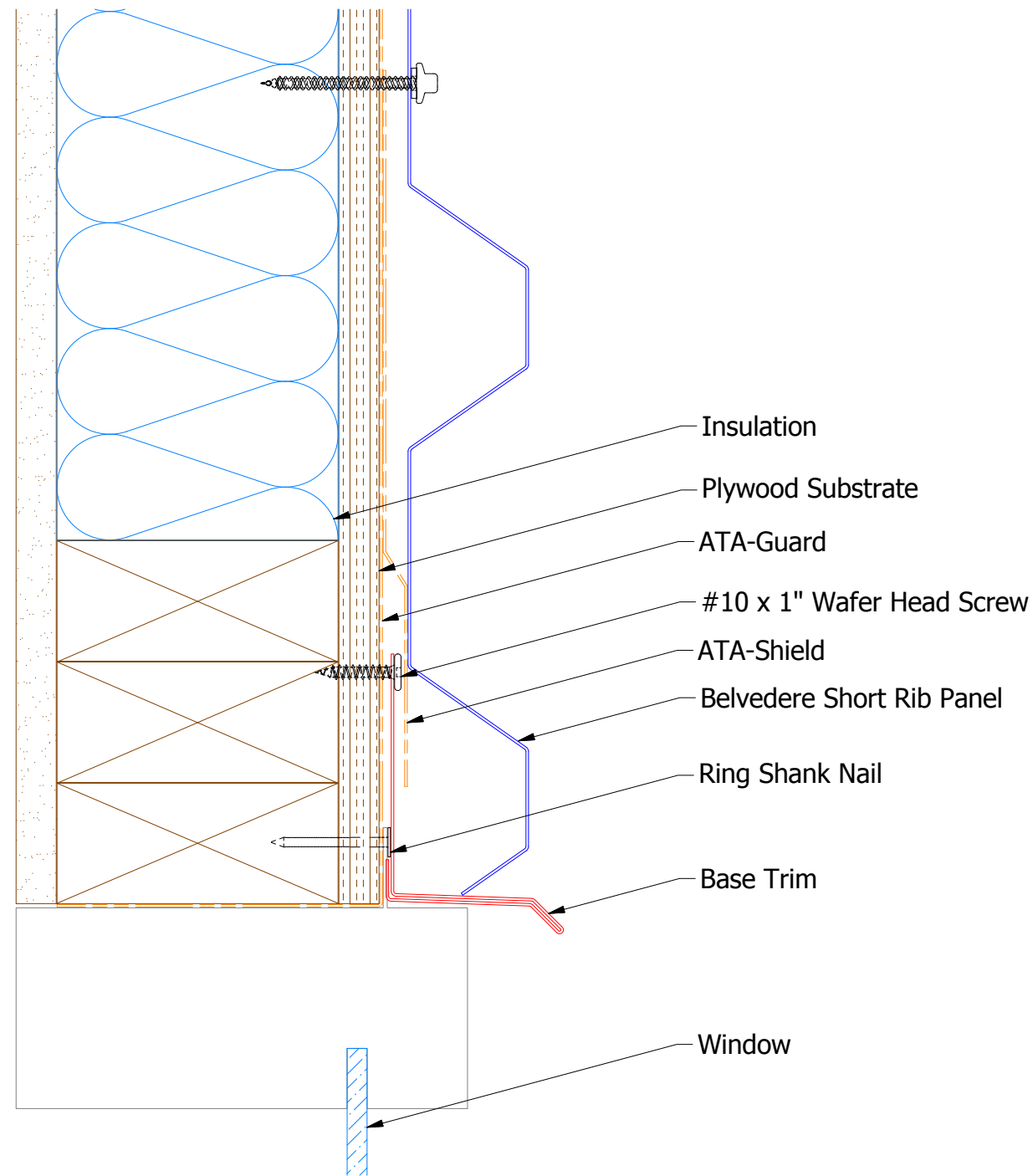
Horizontal Panel



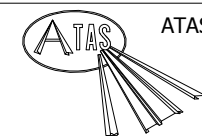
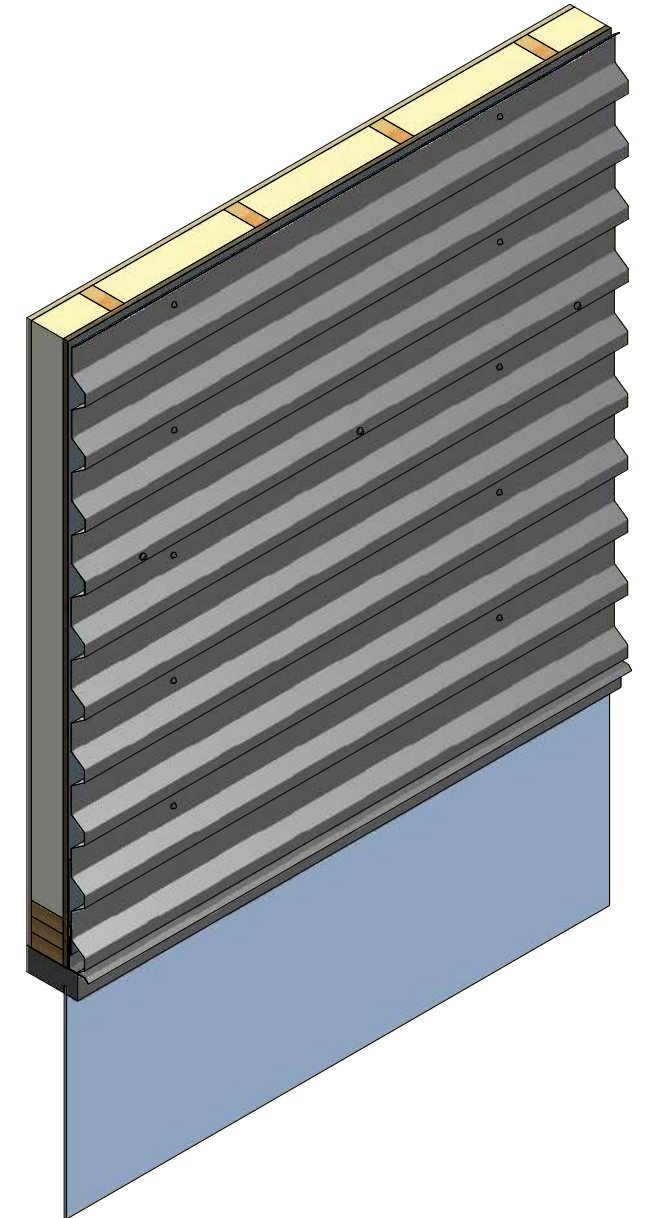
BWA270 - J Closure

		ATAS INTERNATIONAL, INC Allentown PA 610-395-8445 Mesa AZ 480-558-7210	
TITLE Belvedere Short Rib Top of Wall Detail			
DWG. NO.		DR KRK	DATE 6/15/2015
MATERIAL		APP DAS	DATE 7/21/16
SH. SIZE		B	SCALE X:X

REV. NO.	DATE	DESCRIPTION OF REVISION	BY	APP



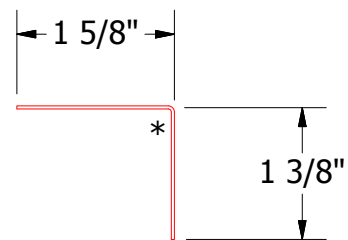
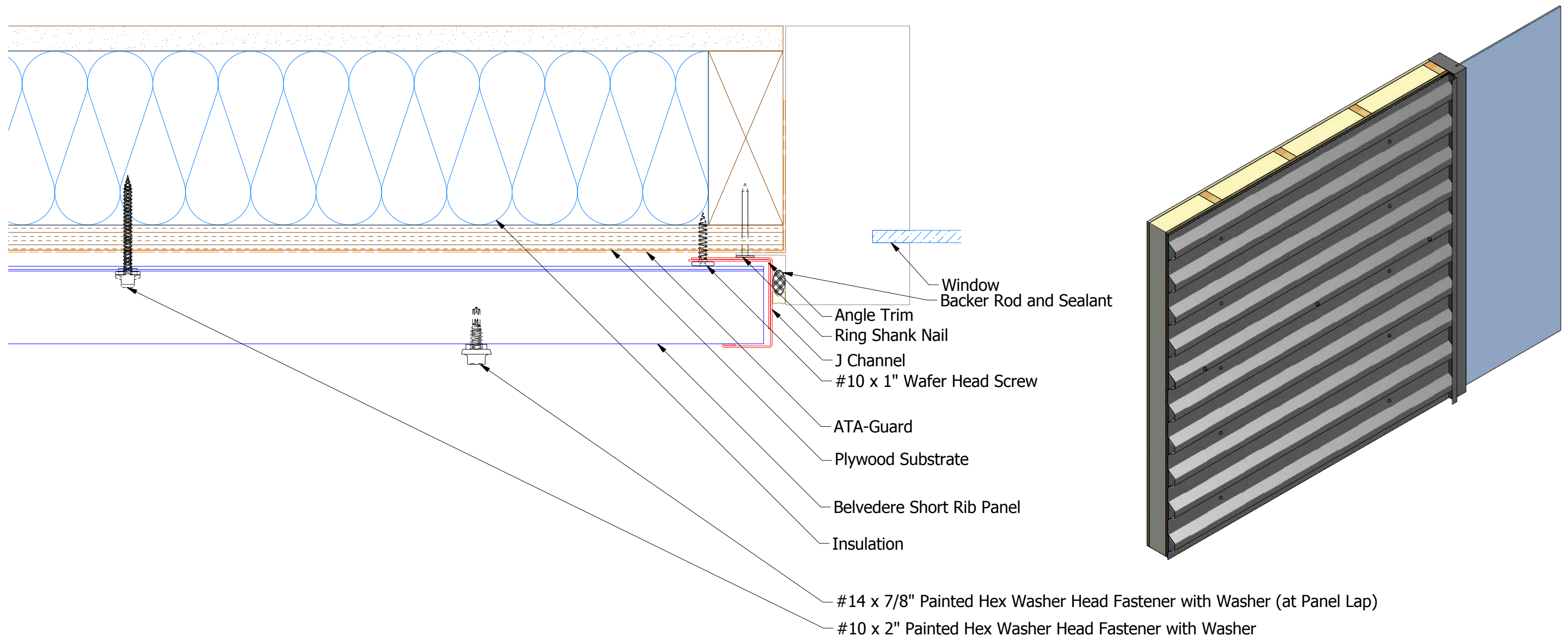
BWA661 - Base Trim



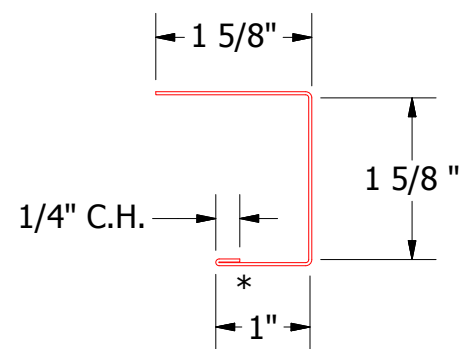
ATAS INTERNATIONAL, INC
 Allentown PA
 610-395-8445
 Mesa AZ
 480-558-7210

TITLE
 Belvedere Short Rib Head Window Flange Detail

REV. NO.	DATE	DESCRIPTION OF REVISION	BY	APP	DWG. NO.	DR MBP	DATE 8/1/2018
					MATERIAL	SH. SIZE B	SCALE X:X

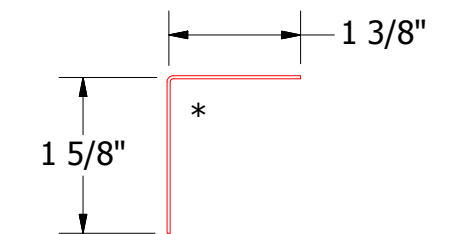
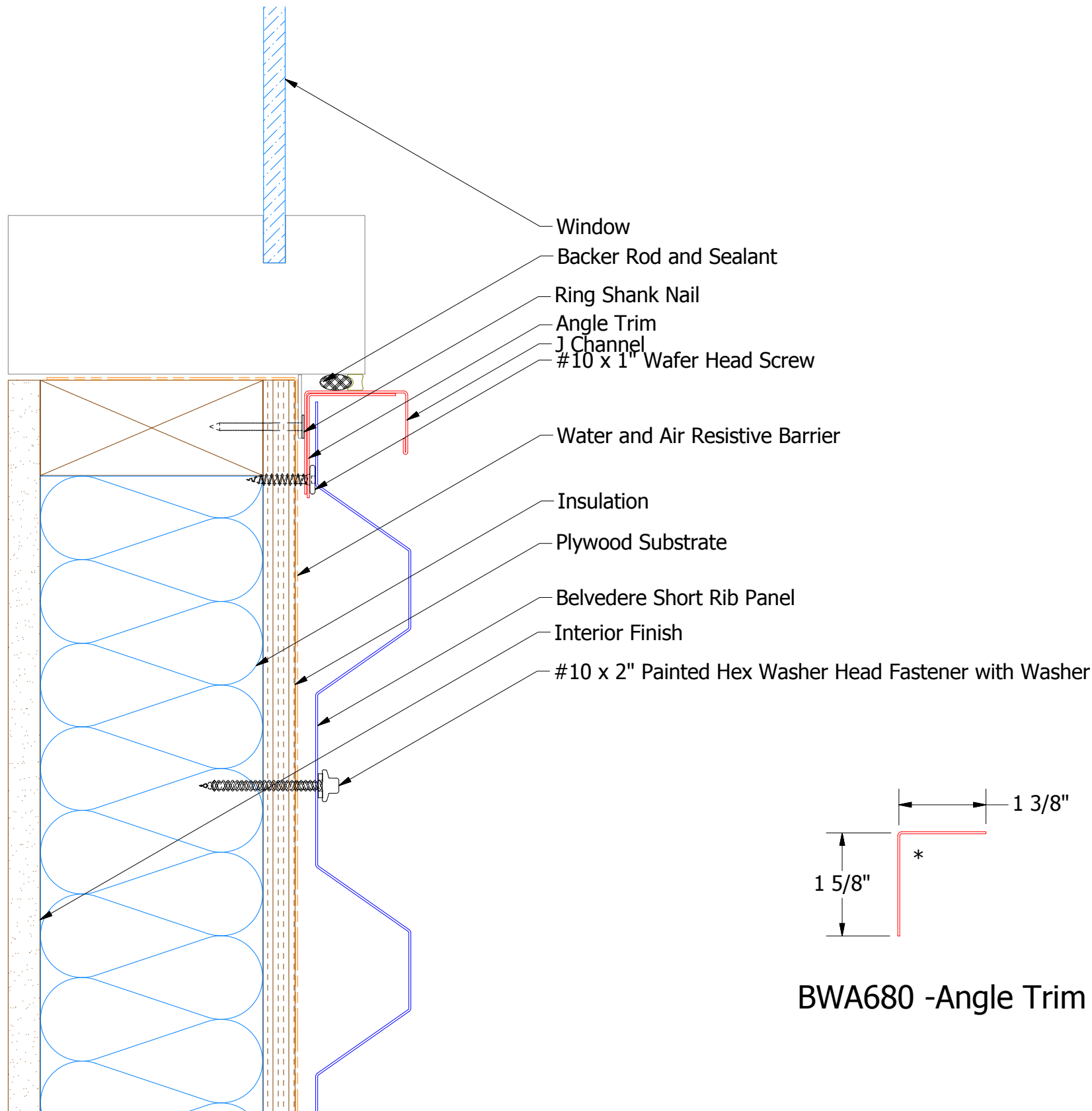


BWA680 - Angle Trim

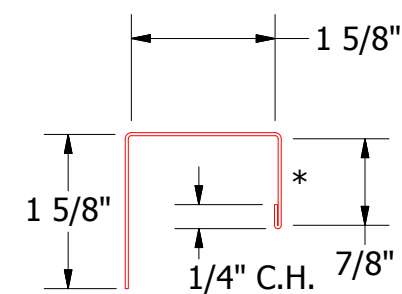


BWA158 - J Channel

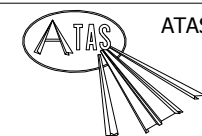
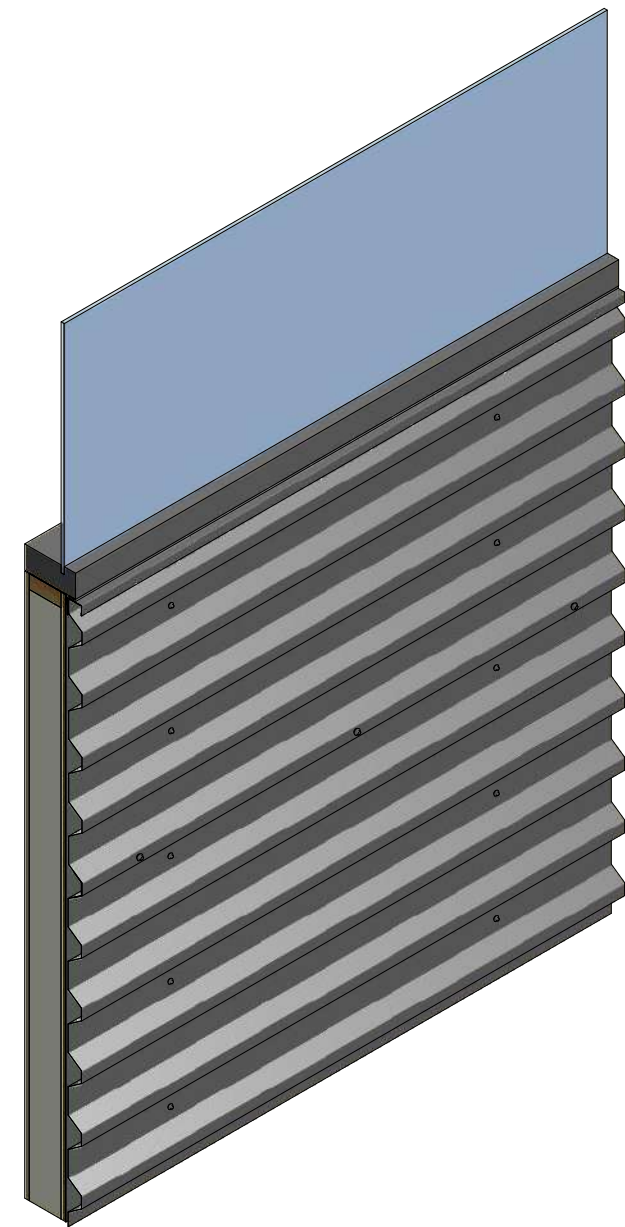
					DWG. NO.			DR	MBP	DATE	8/1/2018
					MATERIAL			APP		DATE	
REV. NO.	DATE	DESCRIPTION OF REVISION	BY	APP				SH. SIZE	B	SCALE	X:X



BWA680 -Angle Trim



BWA158 - J Channel

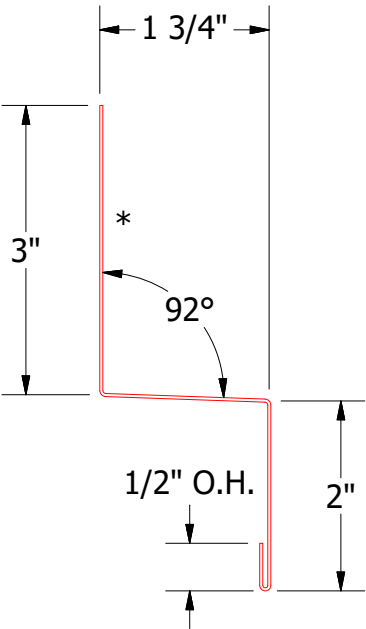
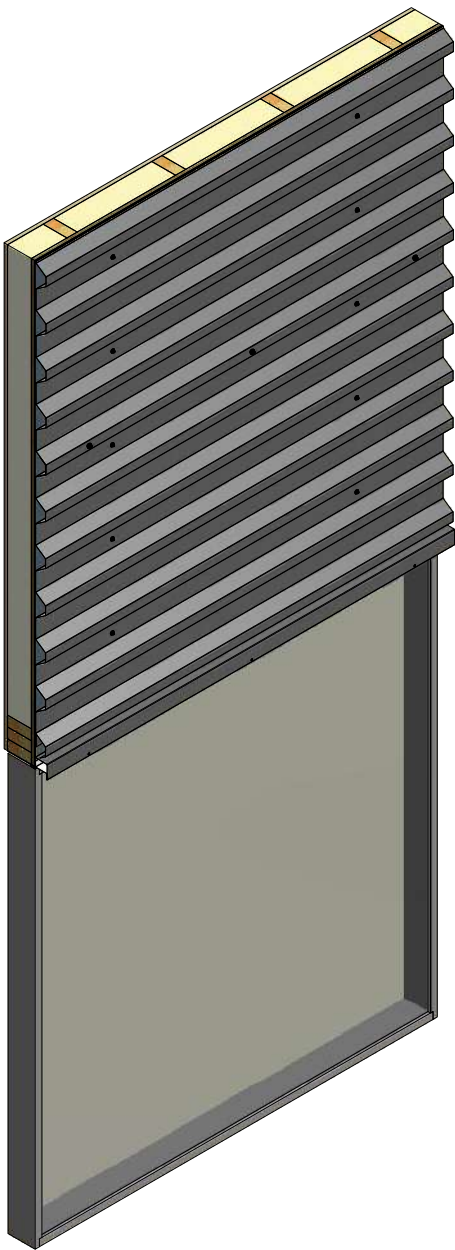
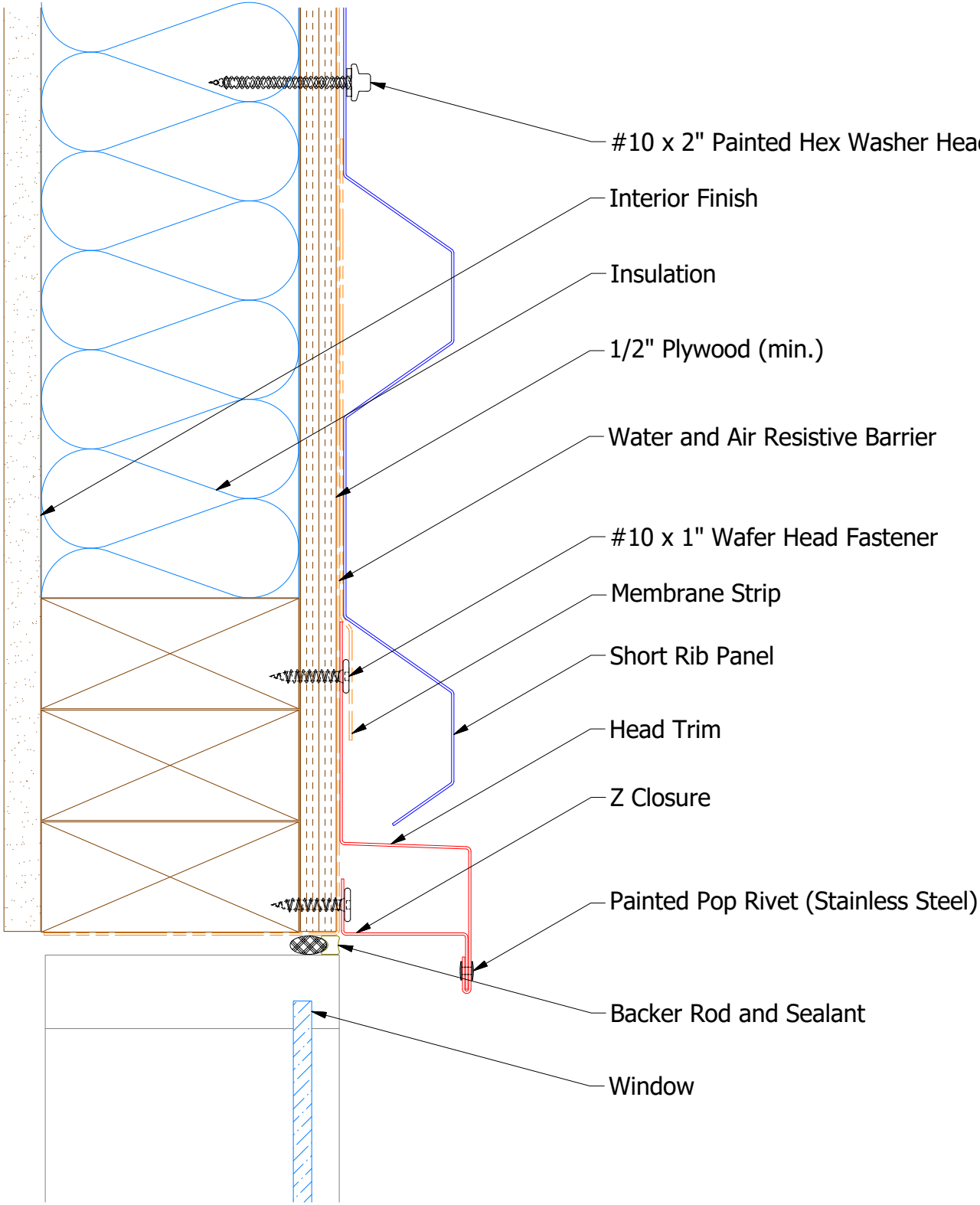


ATAS INTERNATIONAL, INC
 Allentown PA
 610-395-8445
 Mesa AZ
 480-558-7210

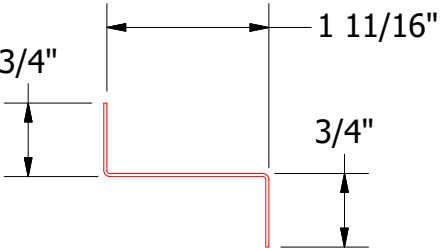
TITLE
 Belvedere Short Rib Window Sill Flange Detail

REV. NO.	DATE	DESCRIPTION OF REVISION	BY	APP	DWG. NO.	DR MBP	DATE 8/1/2018
					MATERIAL	SH. SIZE B	SCALE X:X

Horizontal Panel



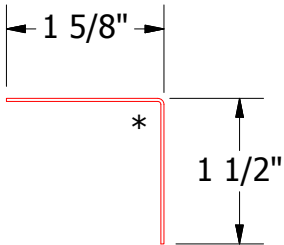
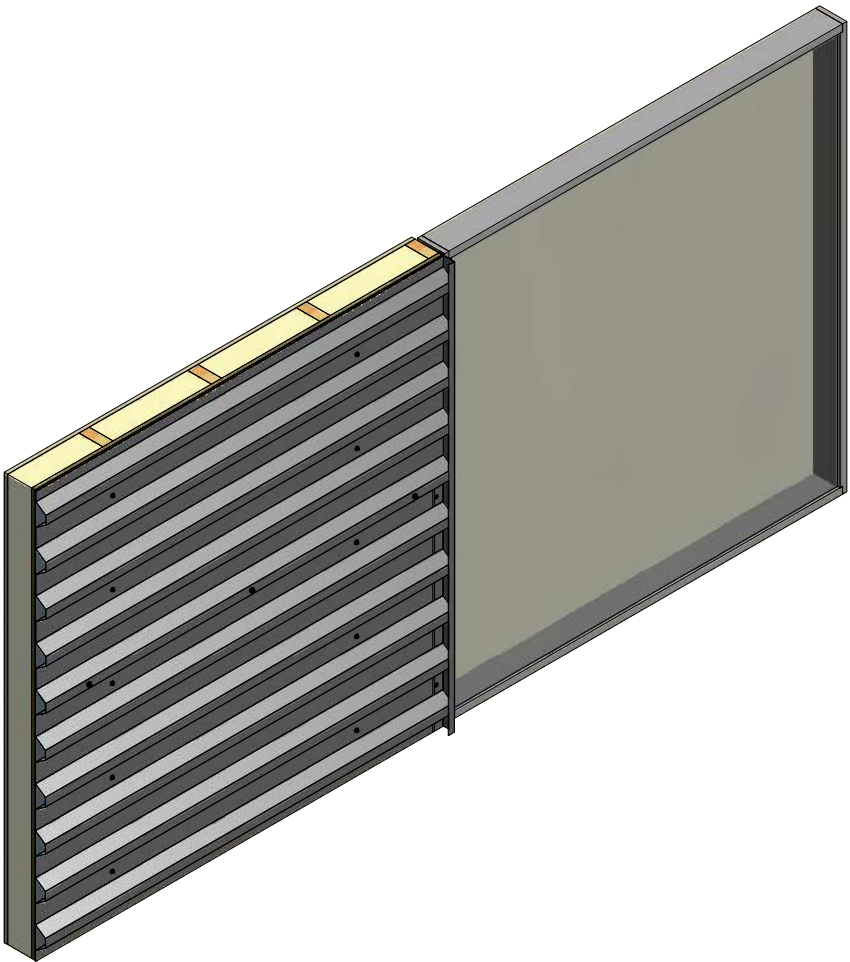
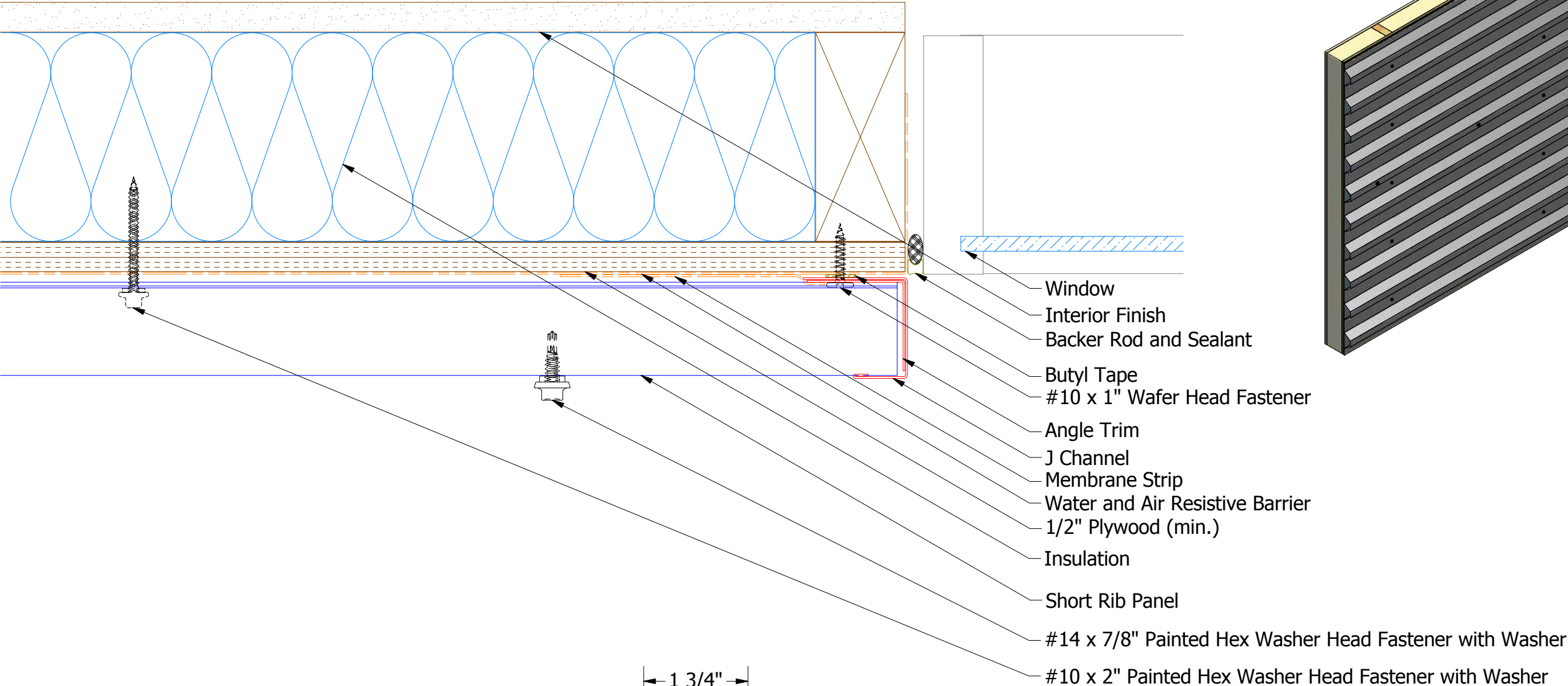
BWA550 - Head Trim



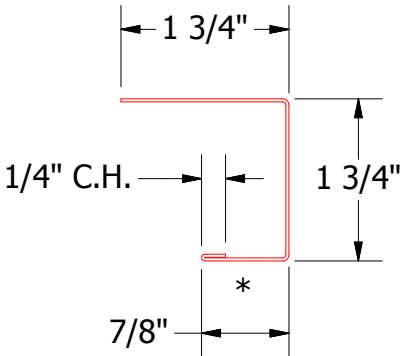
BWA691 - Head Angle Trim (Existing)

								Short Rib Existing Head Detail	
						DWG. NO.		DR	DATE
								DMR	6/8/2018
						MATERIAL		APP	DATE
REV. NO.	DATE	DESCRIPTION OF REVISION		BY	APP			SH. SIZE	SCALE
								B	X:X

Horizontal Panel



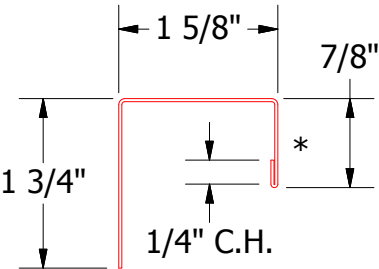
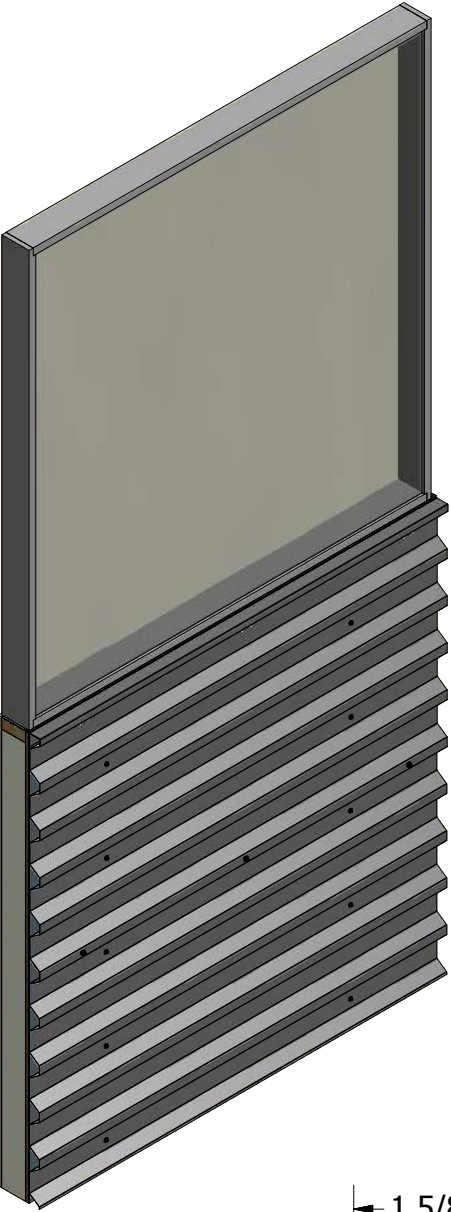
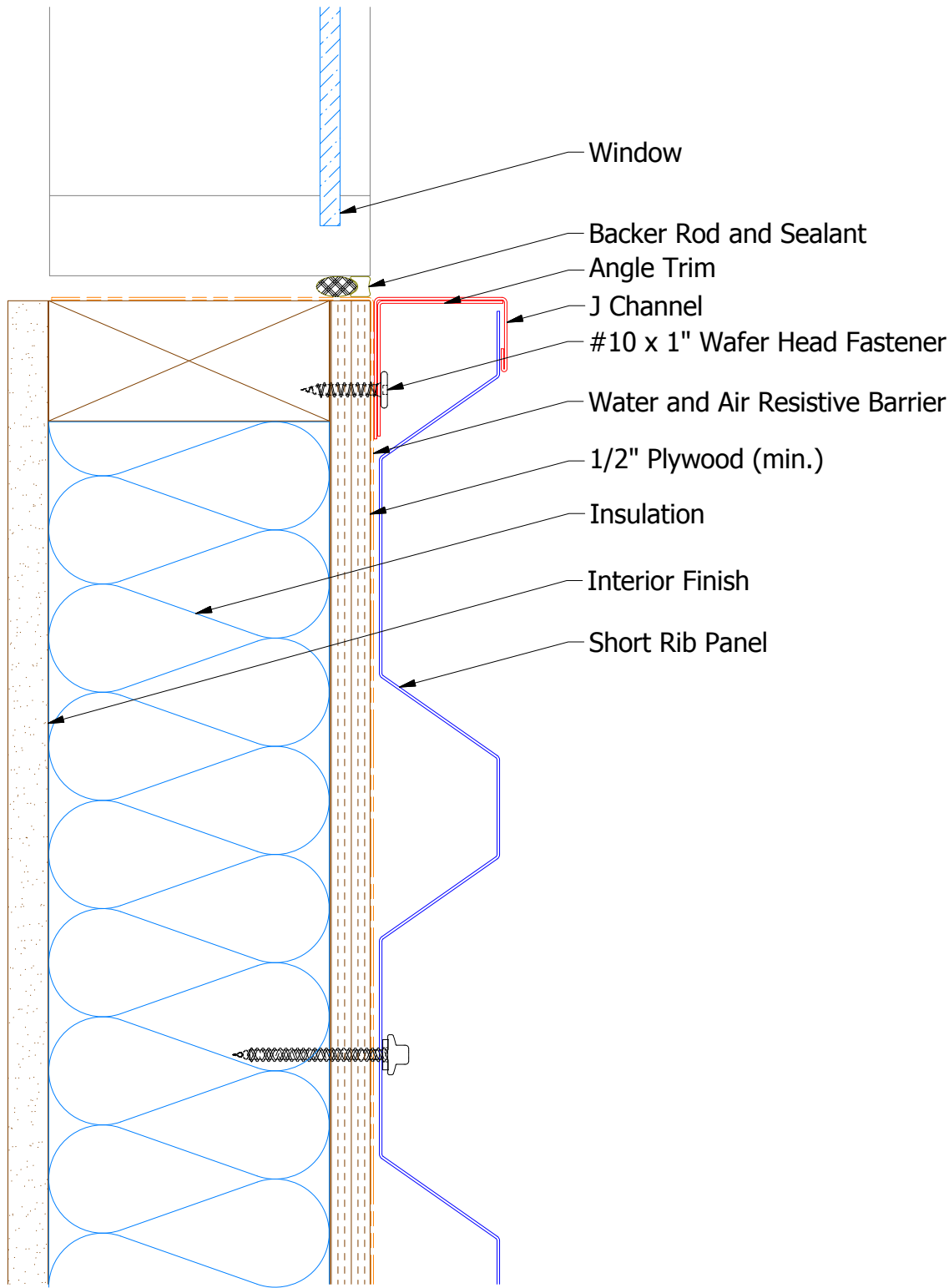
BWA680 - Angle Trim



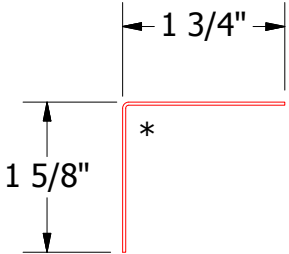
BWA158 - J Channel

								</	

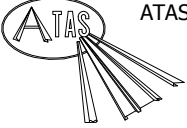
Horizontal Panel



BWA158 - J Channel



BWA680 - Angle Trim

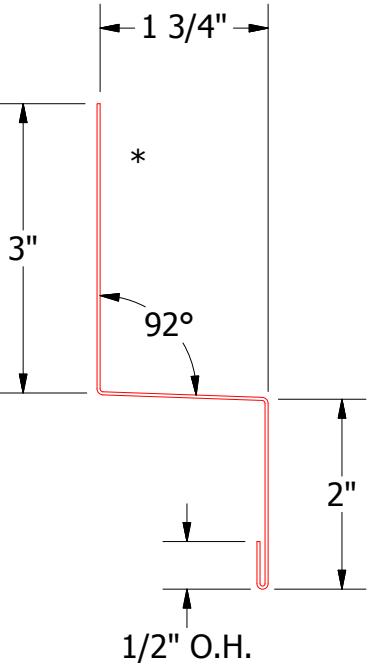
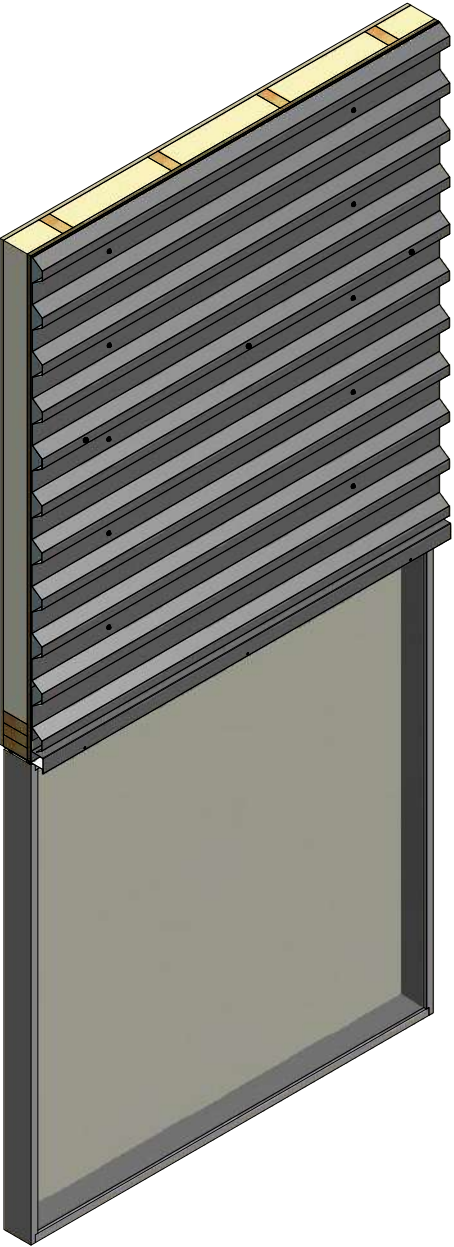
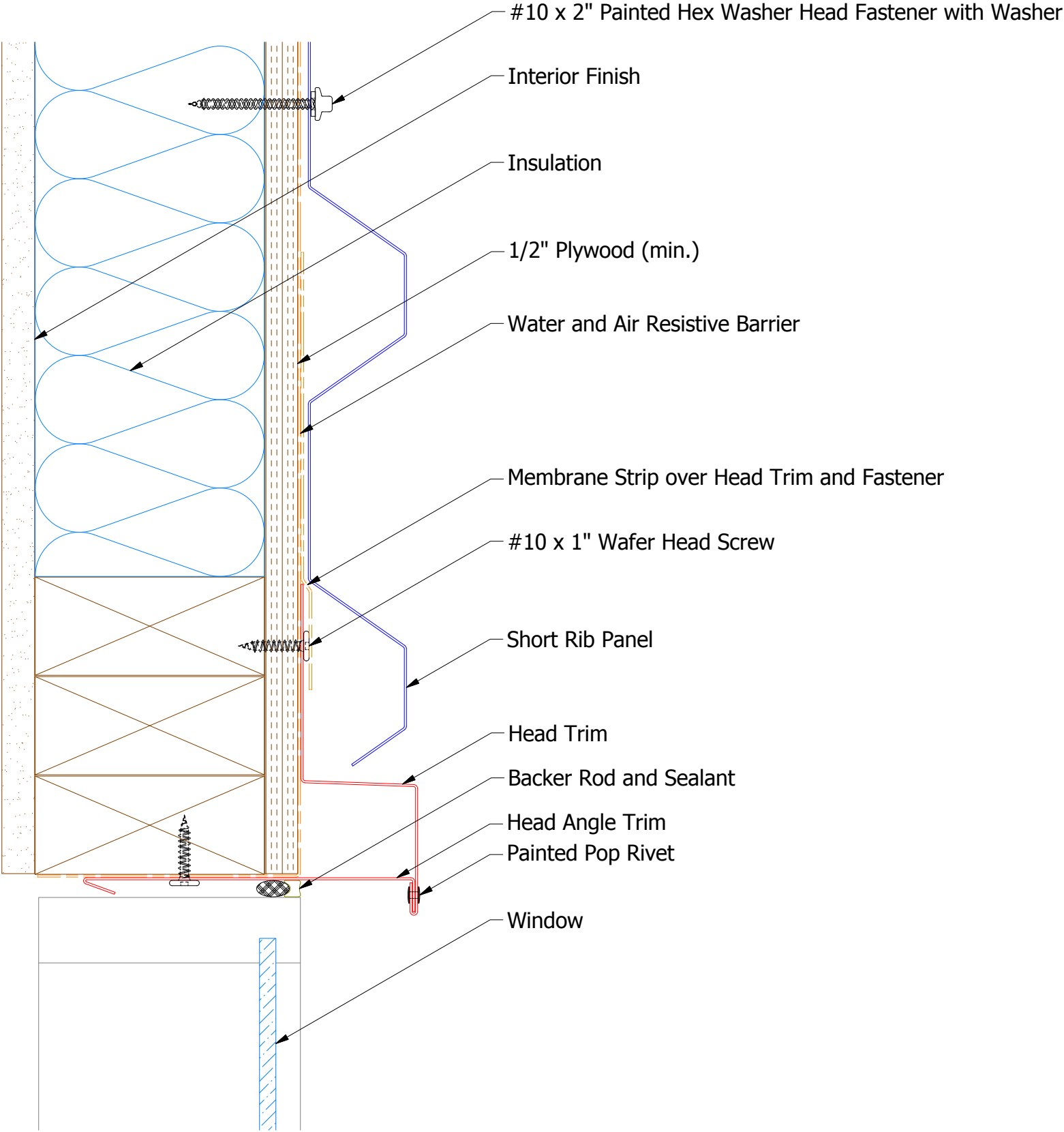


ATAS INTERNATIONAL, INC
Allentown PA
610-395-8445
Mesa AZ
480-558-7210

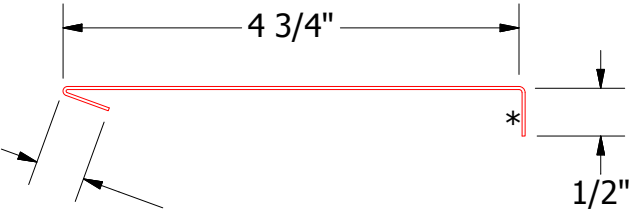
TITLE			
Short Rib Existing Window Sill Detail			
DWG. NO.		DR	DATE
		DMR	6/19/2018
APP		DATE	
MATERIAL		SH. SIZE	
		B	
SCALE		X:X	

REV. NO.	DATE	DESCRIPTION OF REVISION	BY	APP


Horizontal Panel



BWA550 - Head Trim

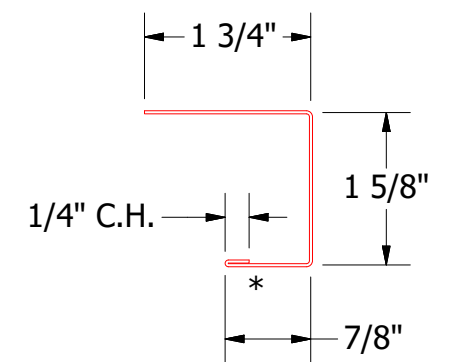
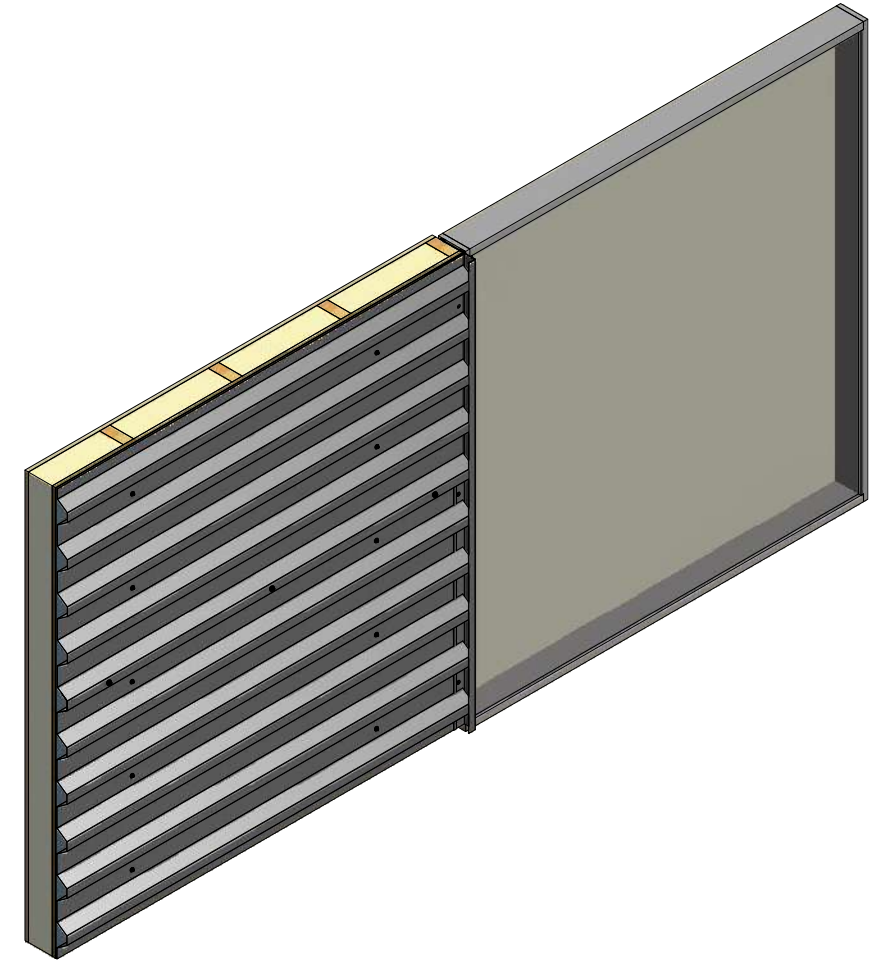
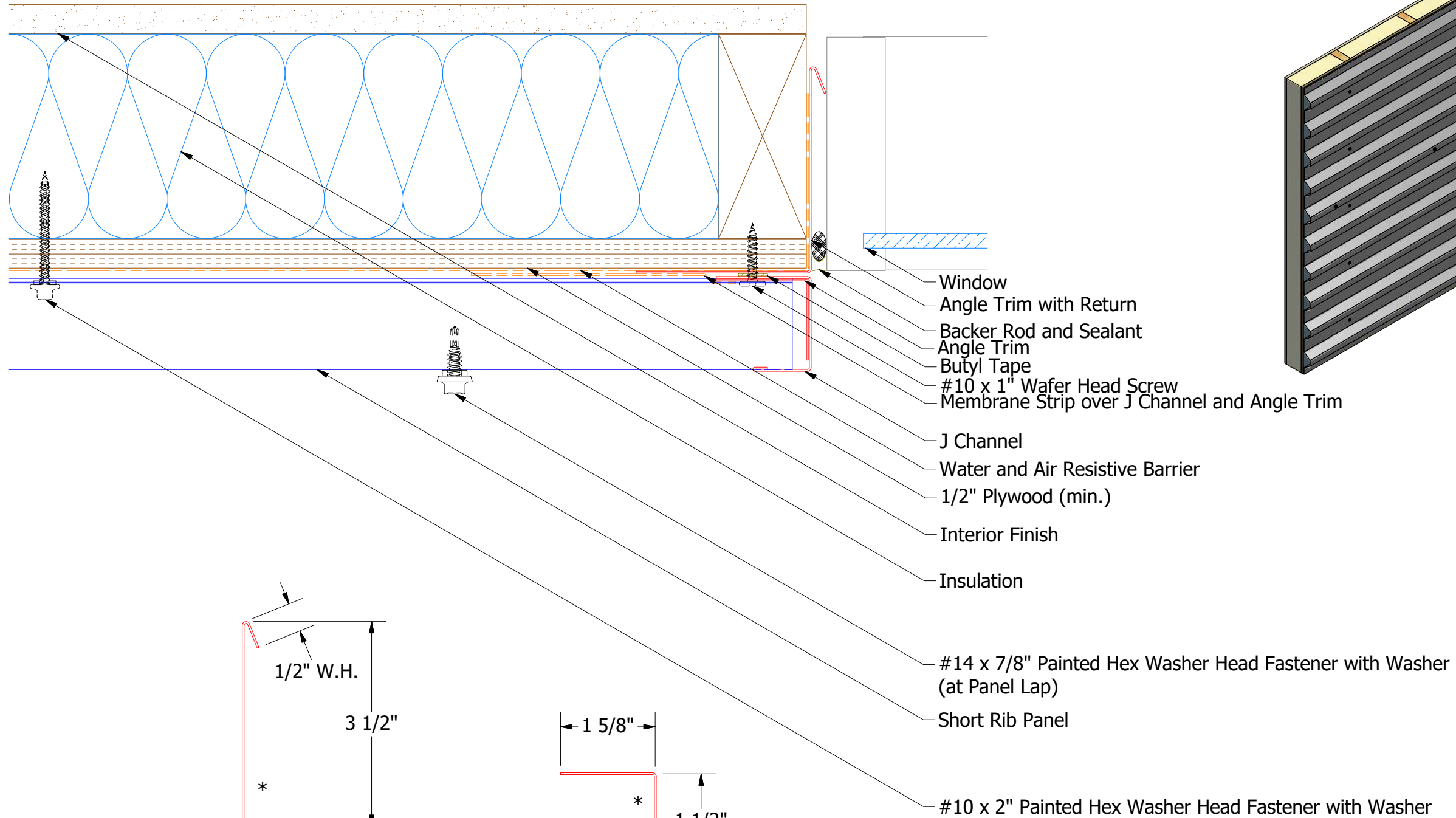


BWA690 - Head Angle Trim

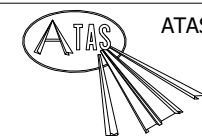
		ATAS INTERNATIONAL, INC Allentown PA 610-395-8445 Mesa AZ 480-558-7210	
TITLE Belvedere Short Rib Head Detail			
DWG. NO.		DR KRK	DATE 6/12/2015
MATERIAL		APP DAS	DATE 7/21/16
		SH. SIZE B	SCALE X:X

REV. NO.	DATE	DESCRIPTION OF REVISION	BY	APP

Horizontal Panel



BWA158 - J Channel



ATAS INTERNATIONAL, INC
Allentown PA
610-395-8445
Mesa AZ
480-558-7210

TITLE	Belvedere Short Rib Jamb Detail
-------	---------------------------------

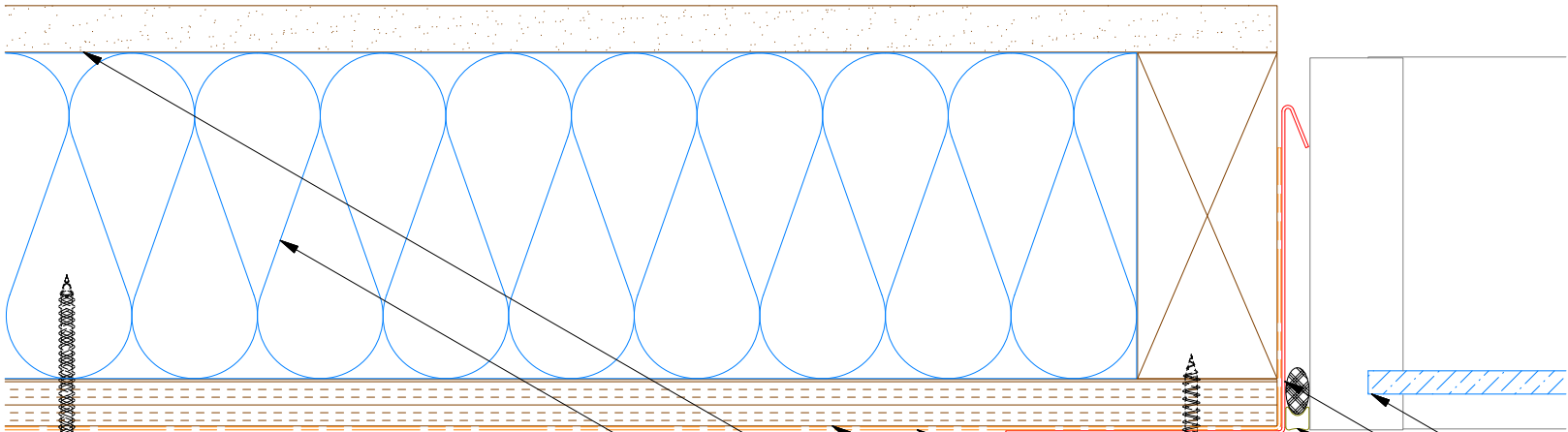
DWG. NO.	DR	DATE
	KRK	6/15/2015
MATERIAL	APP	DATE
	DAS	7/21/16
pp	SH. SIZE	SCALE
	B	X:X

REV. NO.	DATE	DESCRIPTION OF REVISION	BY	APPROVED

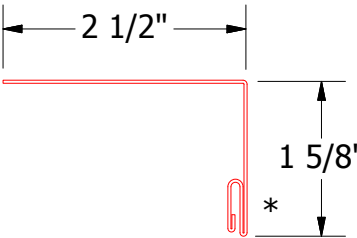
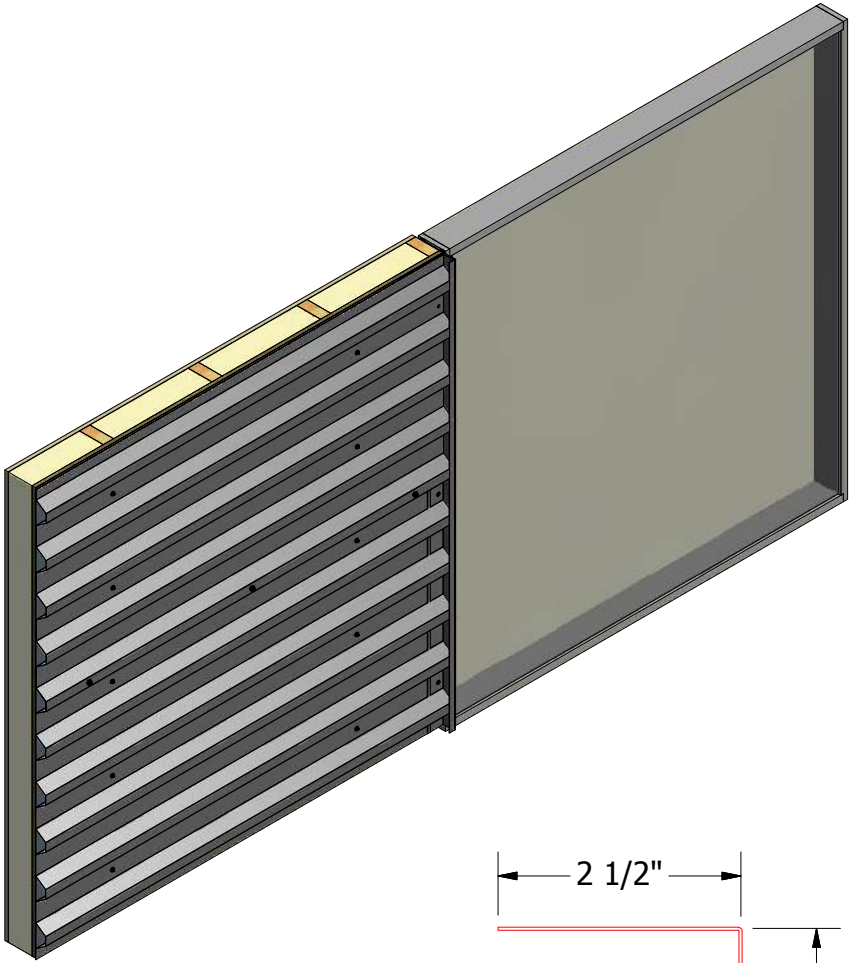
BWA683 - Angle Trim with Return

BWA680 - Angle Trim

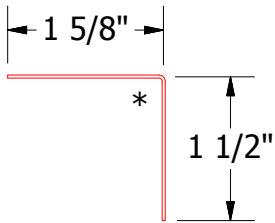
Horizontal Panel - Alternate



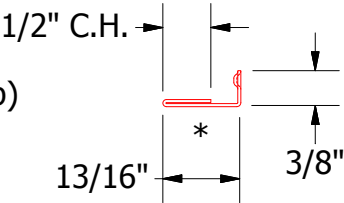
- Window
- Angle Trim with Return
- Backer Rod and Sealant
- Butyl Tape
- #10 x 1" Wafer Head Screw
- Snap J Channel
- Membrane Strip over Snap J Channel
- Water and Air Resistive Barrier
- 1/2" Plywood (min.)
- Interior Finish
- Insulation
- #14 x 7/8" Painted Hex Washer Head Fastener with Washer (at Panel Lap)
- Short Rib Panel
- #10 x 2" Painted Hex Washer Head Fastener with Washer



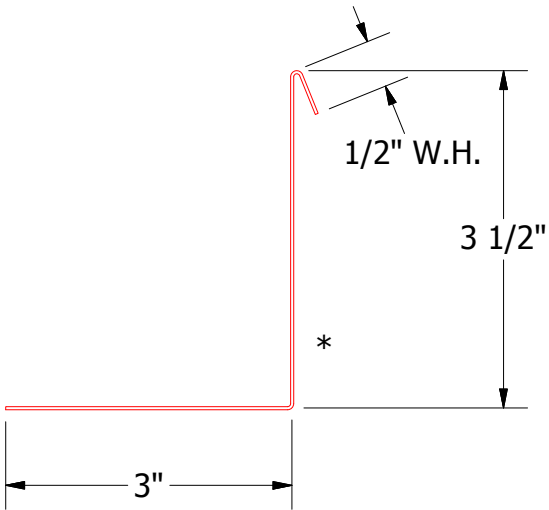
BWA159 - Snap J Base




BWA680 - Angle Trim



UNS078 - Snap J Cover

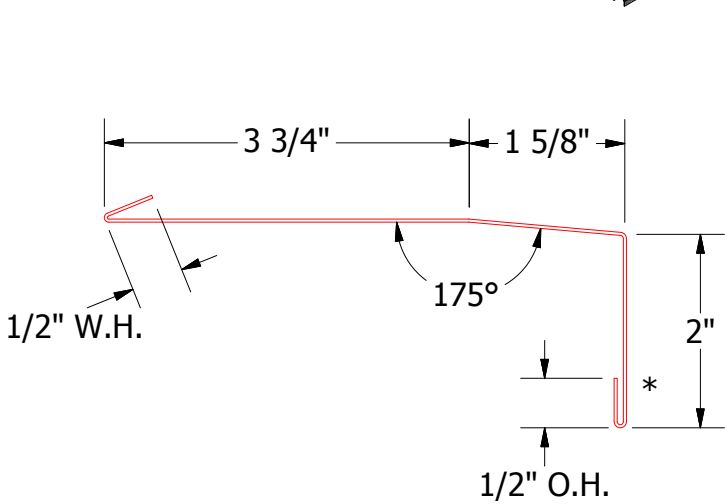
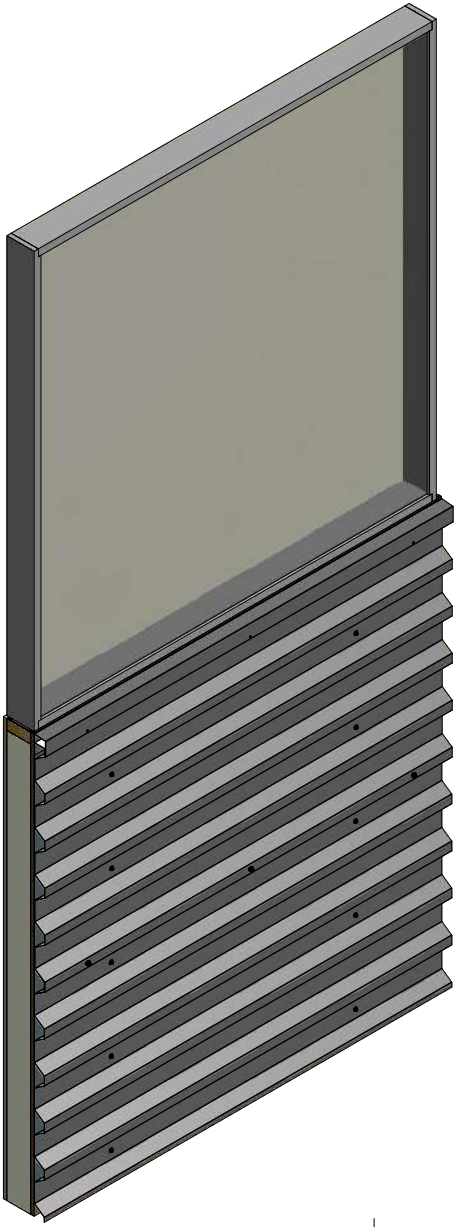
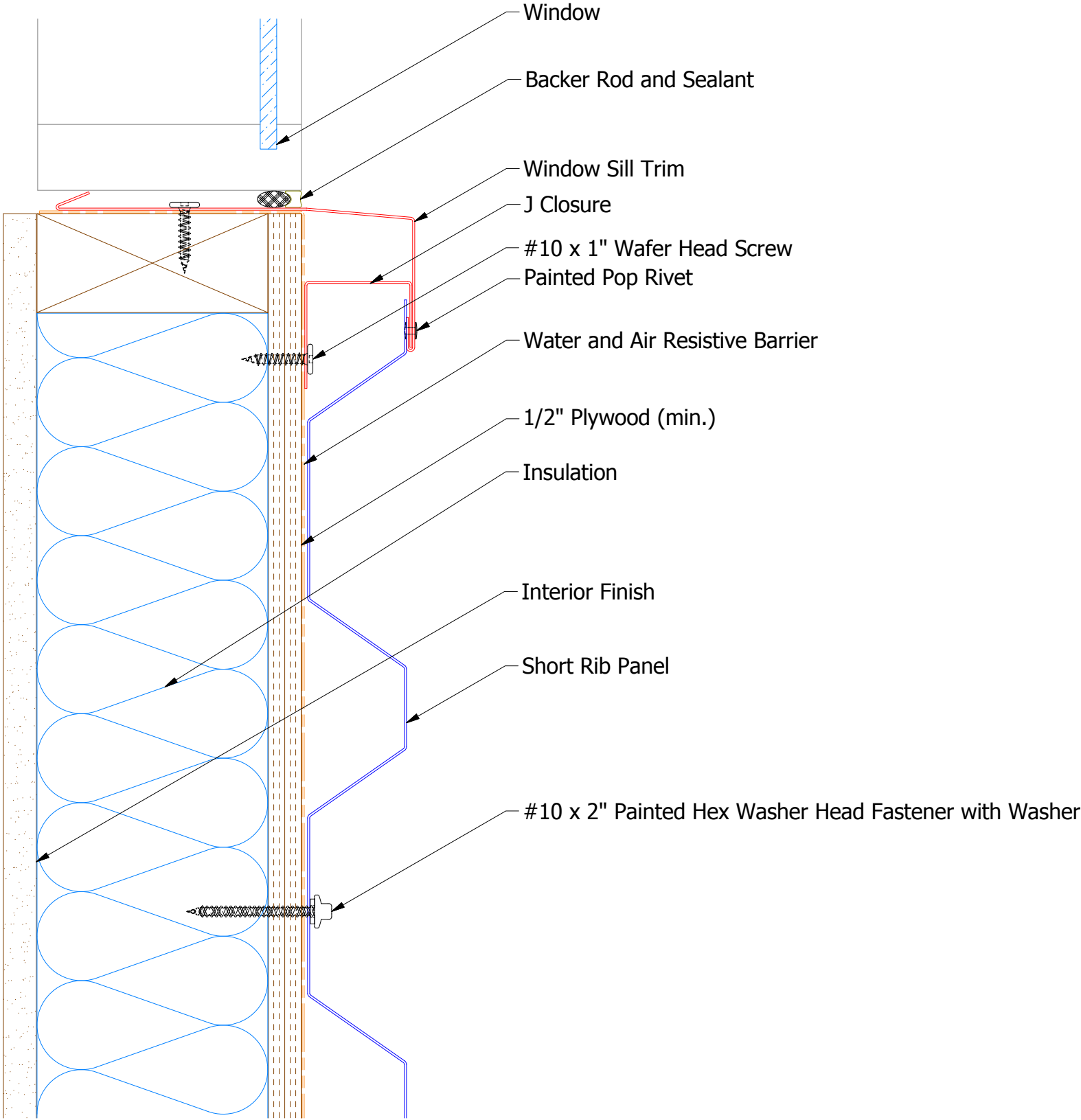


BWA683 - Angle Trim with Return

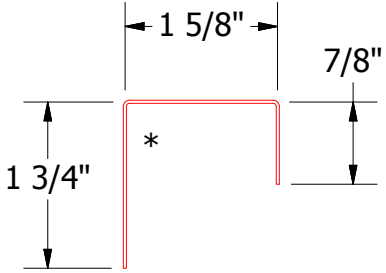
		ATAS INTERNATIONAL, INC Allentown PA 610-395-8445 Mesa AZ 480-558-7210	
TITLE Belvedere Short Rib Jamb Alt Detail			
DWG. NO.		DR KRK	DATE 6/15/2015
MATERIAL		APP DAS	DATE 7/21/16
		SH. SIZE B	SCALE X:X

REV. NO.	DATE	DESCRIPTION OF REVISION	BY	APP


Horizontal Panel



BWA670 - Window Sill Trim



BWA270 - J Closure



ATAS INTERNATIONAL, INC
Allentown PA
610-395-8445
Mesa AZ
480-558-7210

TITLE Belvedere Short Rib Window Sill Detail			
DWG. NO.		DR KRK	DATE 6/15/2015
MATERIAL		APP DAS	DATE 7/21/16
REV. NO.	DATE	DESCRIPTION OF REVISION	BY APP SH. SIZE B SCALE X:X

REV. NO.	DATE	DESCRIPTION OF REVISION	BY	APP