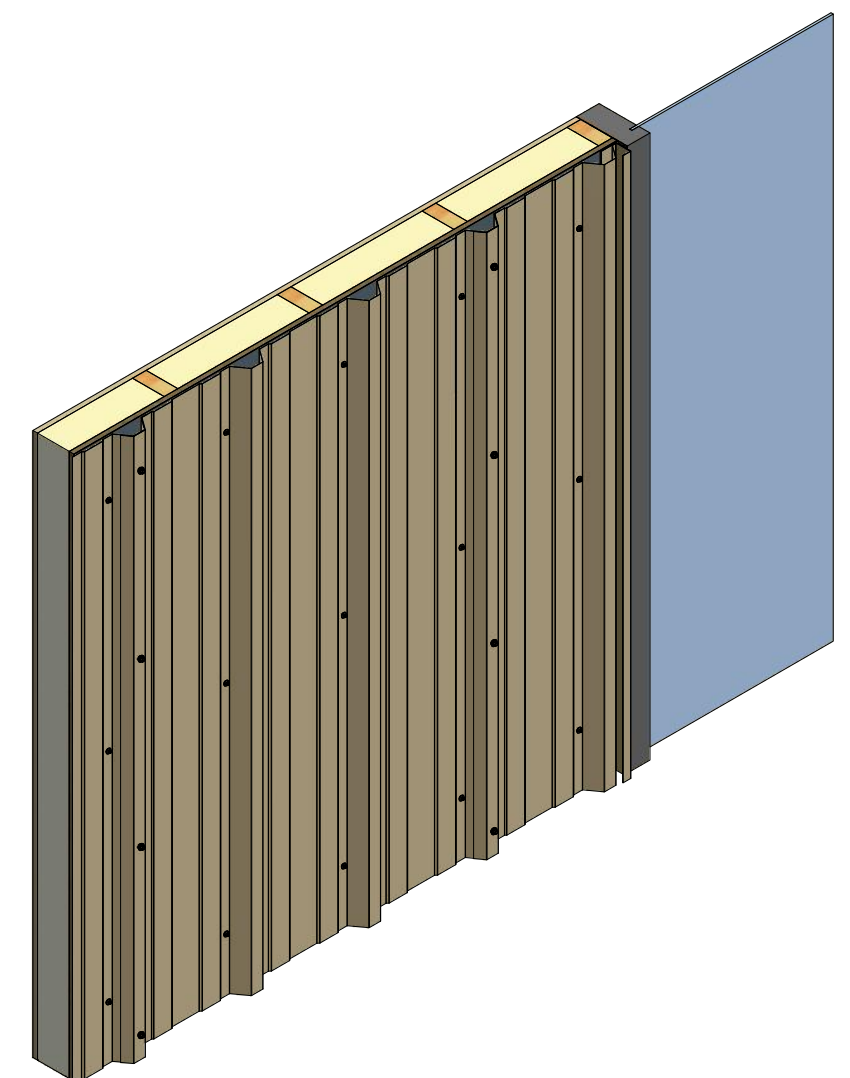
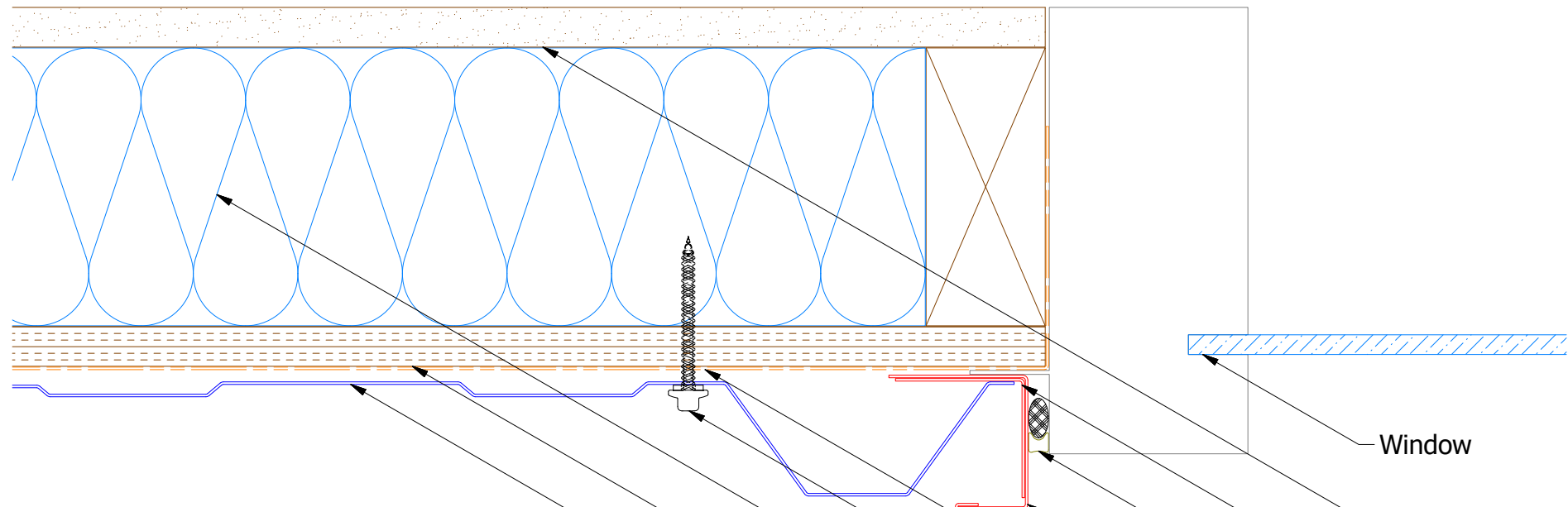
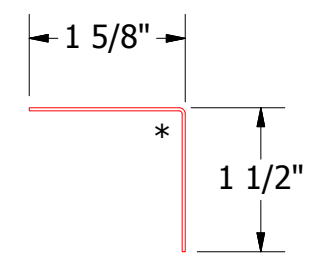


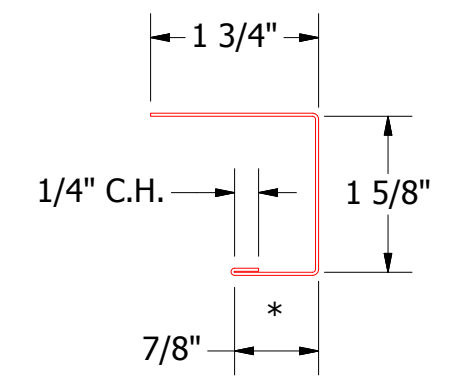
Vertical Panel



- Window
- Interior Finish
- Angle Trim
- Backer Rod and Sealant
- J Channel
- Water and Air Resistive Barrier
- #10 x 2" Painted Hex Washer Head Fastener with Washer
- Insulation
- 1/2" Plywood (min.)
- Grand R Panel



BWA680 - Angle Trim



BWA158 - J Channel

REV. NO.	DATE	DESCRIPTION OF REVISION	BY	APP

ATAS INTERNATIONAL, INC
 Allentown PA
 610-395-8445
 Mesa AZ
 480-558-7210

TITLE			Grand R Jamb Flange Detail		
DWG. NO.	DR	DATE	DMR	DATE	7/26/2018
MATERIAL	APP	DATE	SH. SIZE	SCALE	X:X