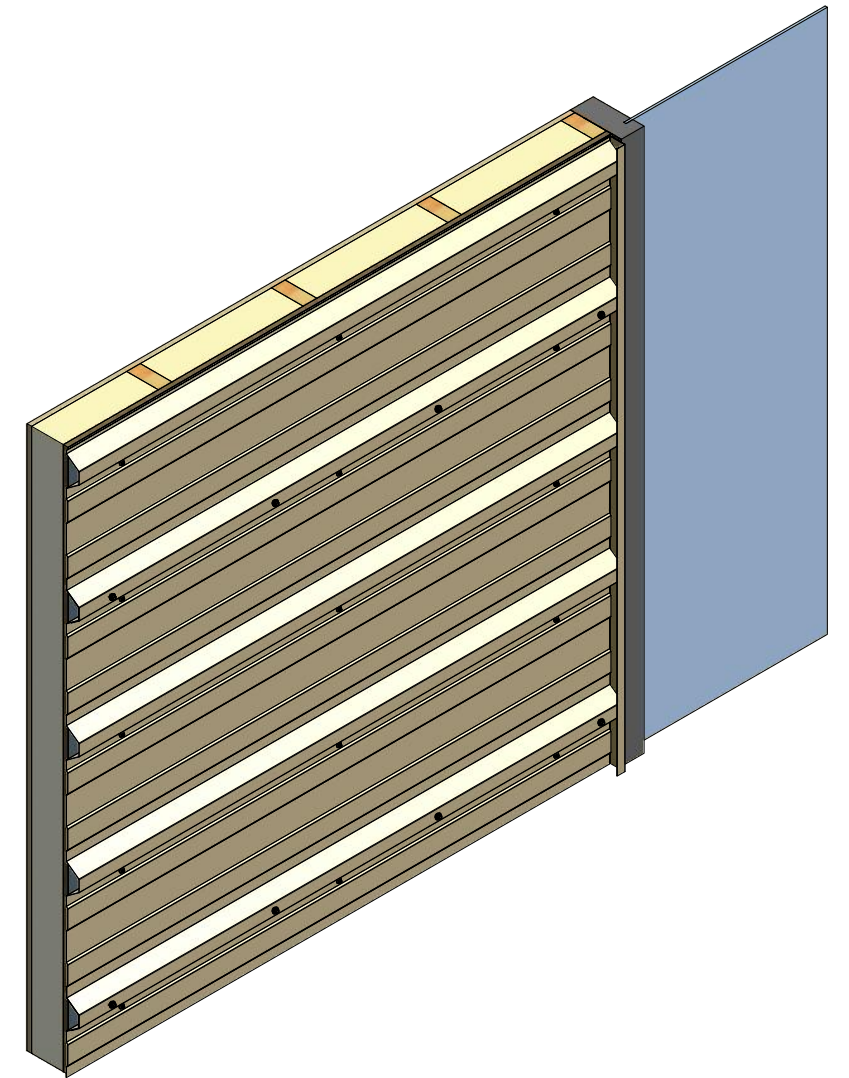
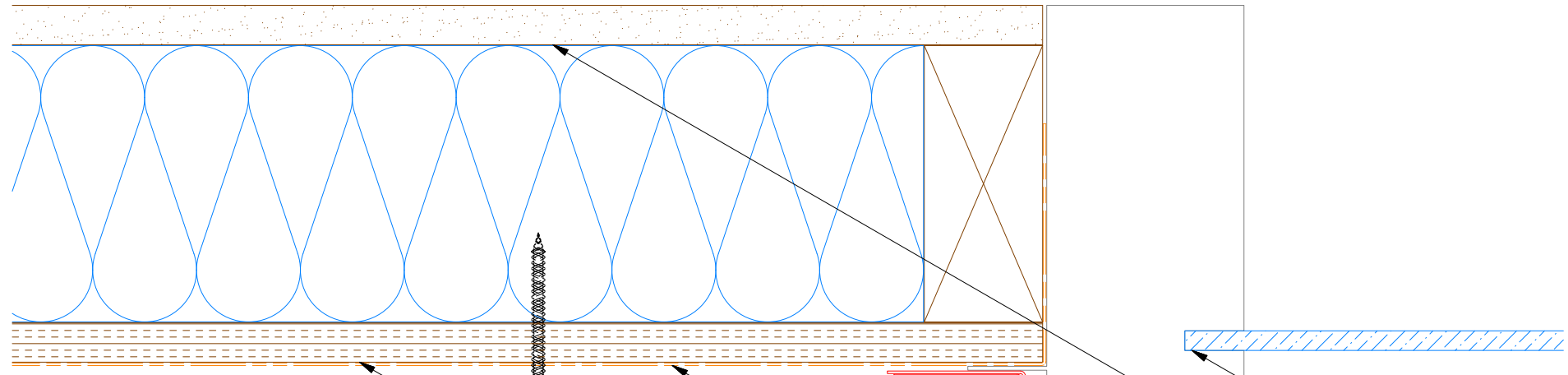
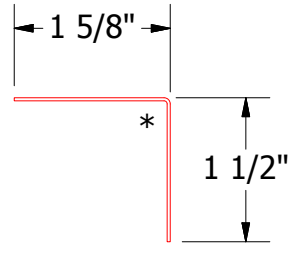


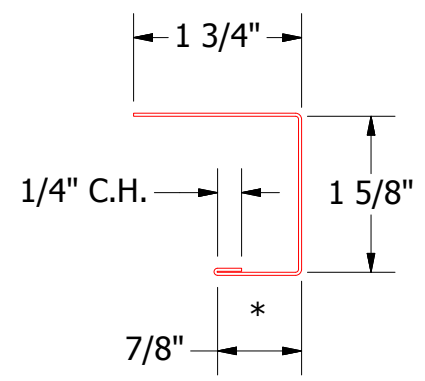
Horizontal Panel



- Window
- Interior Finish
- Angle Trim
- Backer Rod and Sealant
- J Channel
- Water and Air Resistive Barrier
- #14 x 7/8" Painted Hex Washer Head Fastener with Washer
- #10 x 2" Painted Hex Washer Head Fastener with Washer
- 1/2" Plywood (min.)
- Grand R Panel




BWA680 - Angle Trim



BWA158 - J Channel

REV. NO.	DATE	DESCRIPTION OF REVISION	BY	APP



ATAS INTERNATIONAL, INC
 Allentown PA
 610-395-8445
 Mesa AZ
 480-558-7210

TITLE			
Grand R Jamb Flange Detail			
DWG. NO.	DR	DATE	
	DMR	7/26/2018	
MATERIAL	APP	DATE	
	SH. SIZE	B	SCALE X:X