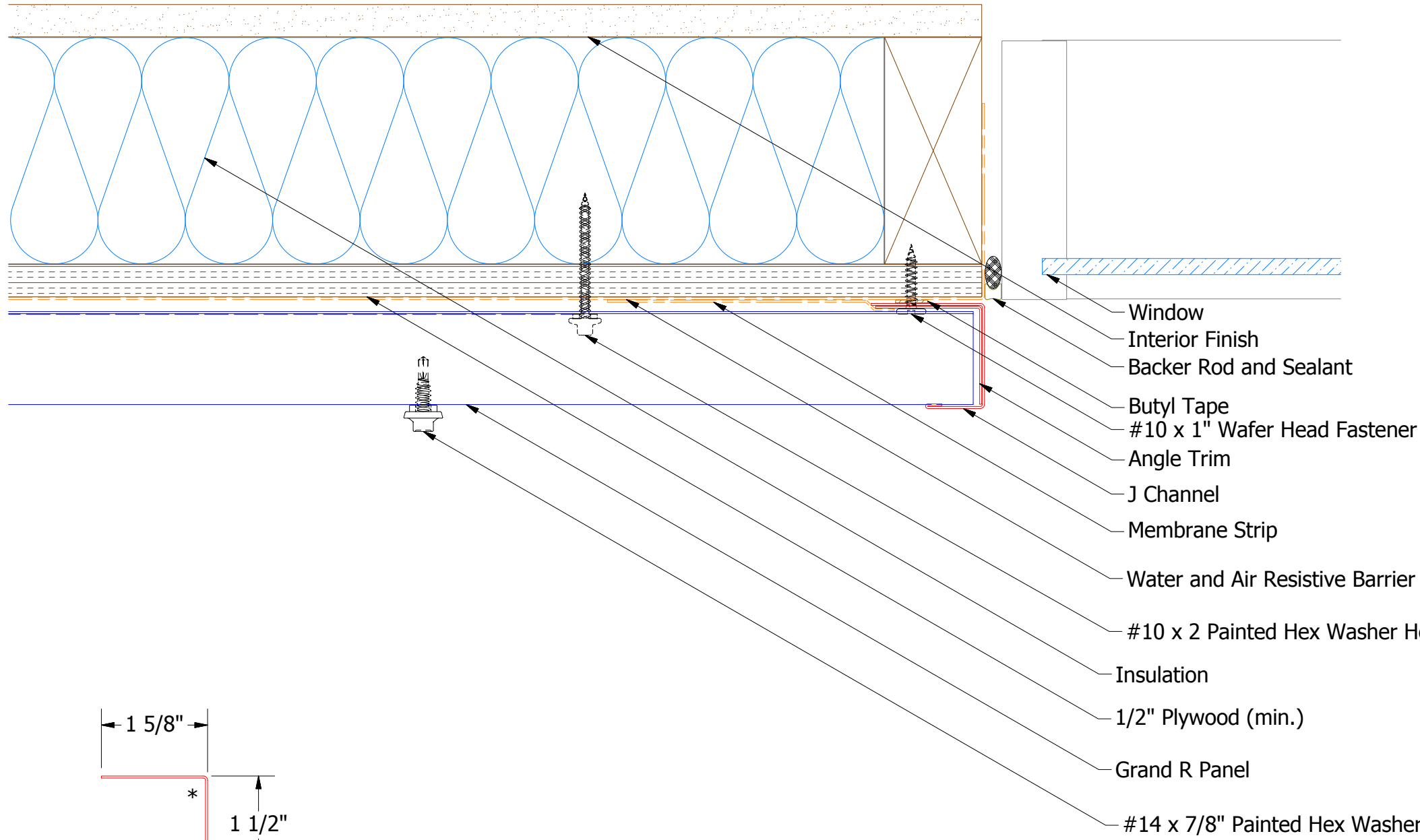
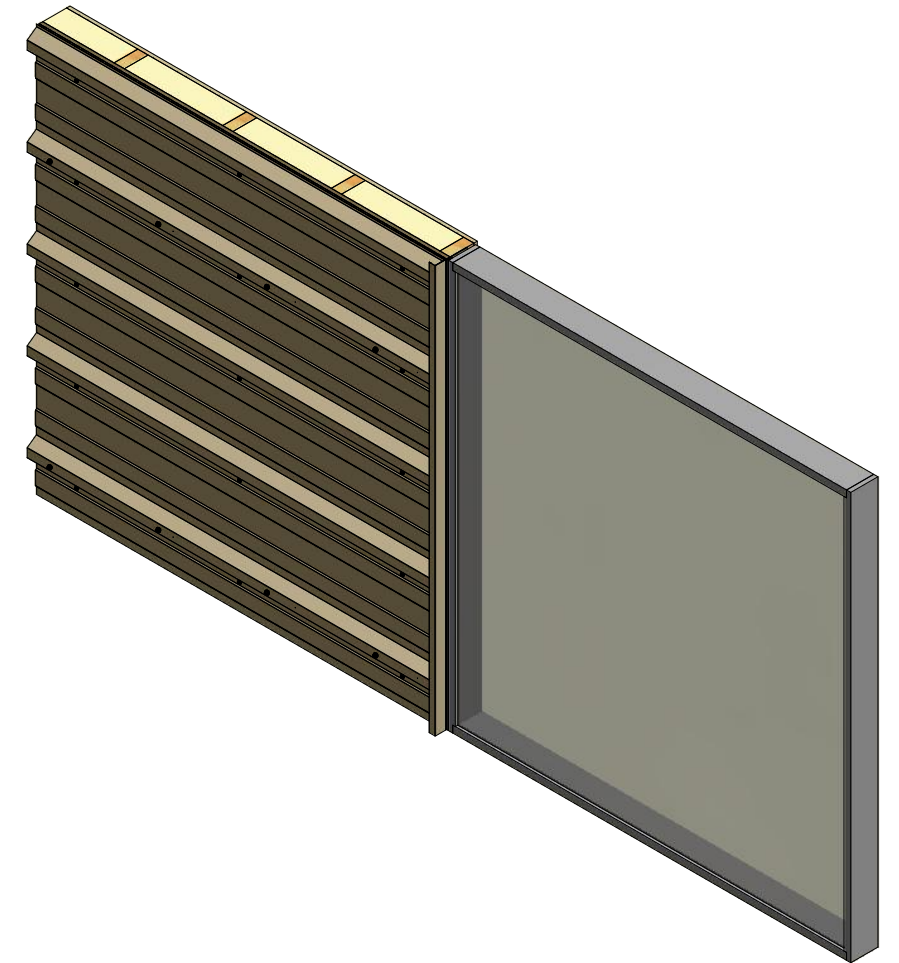
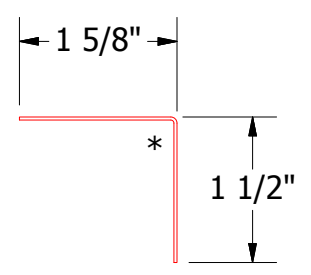


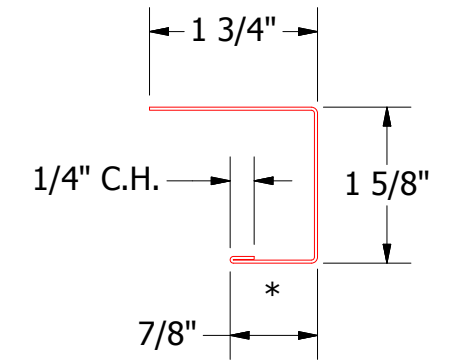
# Horizontal Panel



- Window
- Interior Finish
- Backer Rod and Sealant
- Butyl Tape
- #10 x 1" Wafer Head Fastener
- Angle Trim
- J Channel
- Membrane Strip
- Water and Air Resistive Barrier
- #10 x 2 Painted Hex Washer Head Fastener with Washer
- Insulation
- 1/2" Plywood (min.)
- Grand R Panel
- #14 x 7/8" Painted Hex Washer Head Fastener with Washer



**BWA680 - Angle Trim**



**BWA158 - J Channel**

**ATAS** ATAS INTERNATIONAL, INC  
 Allentown PA  
 610-395-8445  
 Mesa AZ  
 480-558-7210

TITLE		Grand R Existing Jamb Detail	
DWG. NO.	DR	DATE	6/4/2018
	DMR	DATE	
MATERIAL	APP	DATE	
SH. SIZE	B	SCALE	X:X

REV. NO.	DATE	DESCRIPTION OF REVISION	BY	APP