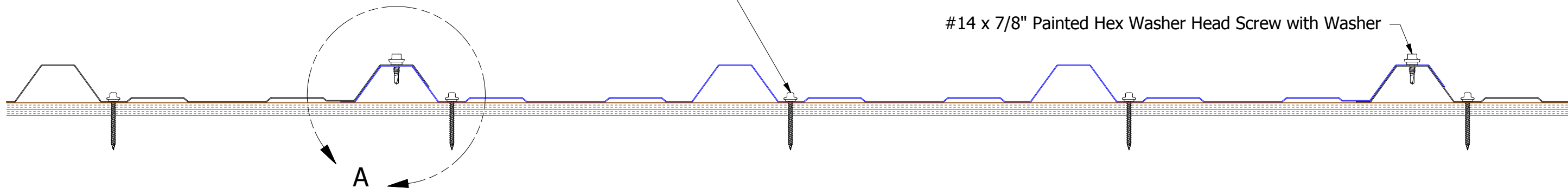


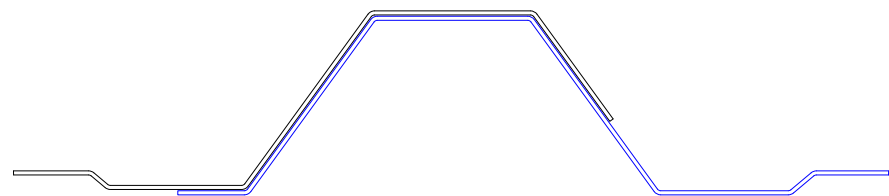
BWG390

#10 x 2" Painted Hex Washer Head Screw with Washer

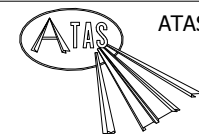
#14 x 7/8" Painted Hex Washer Head Screw with Washer



A



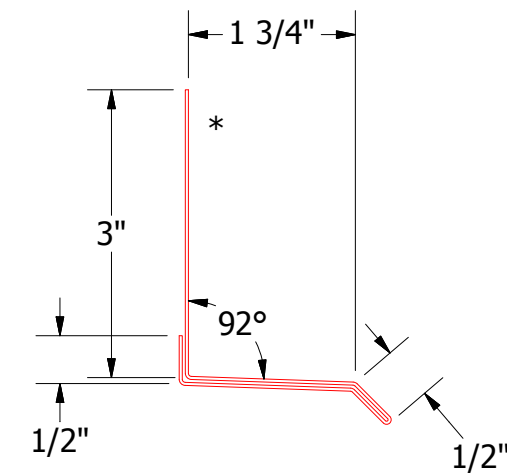
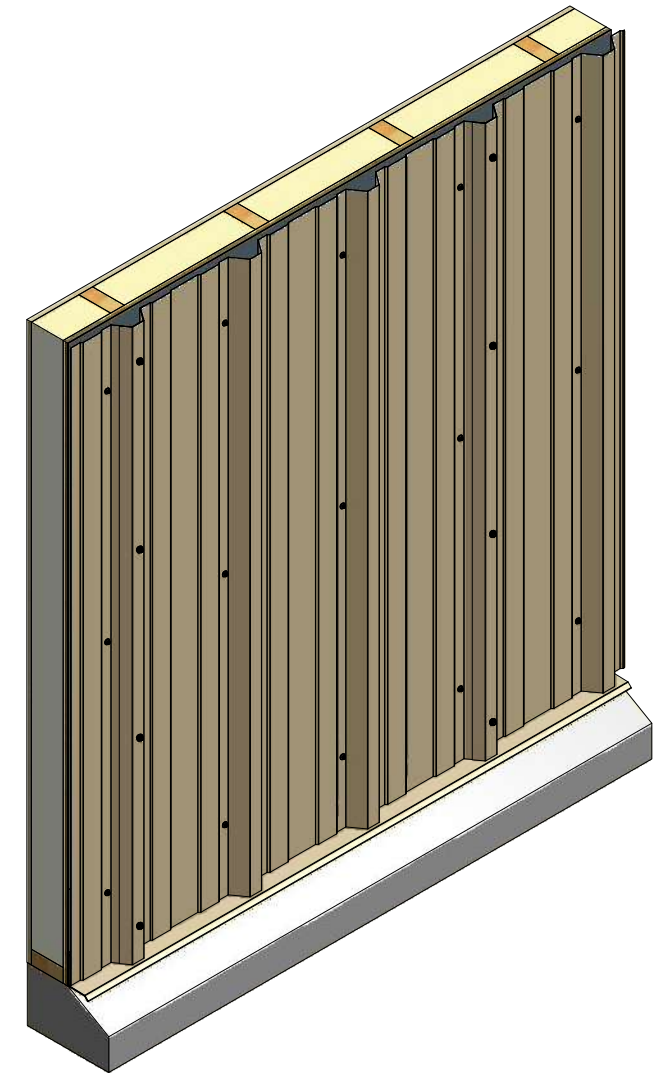
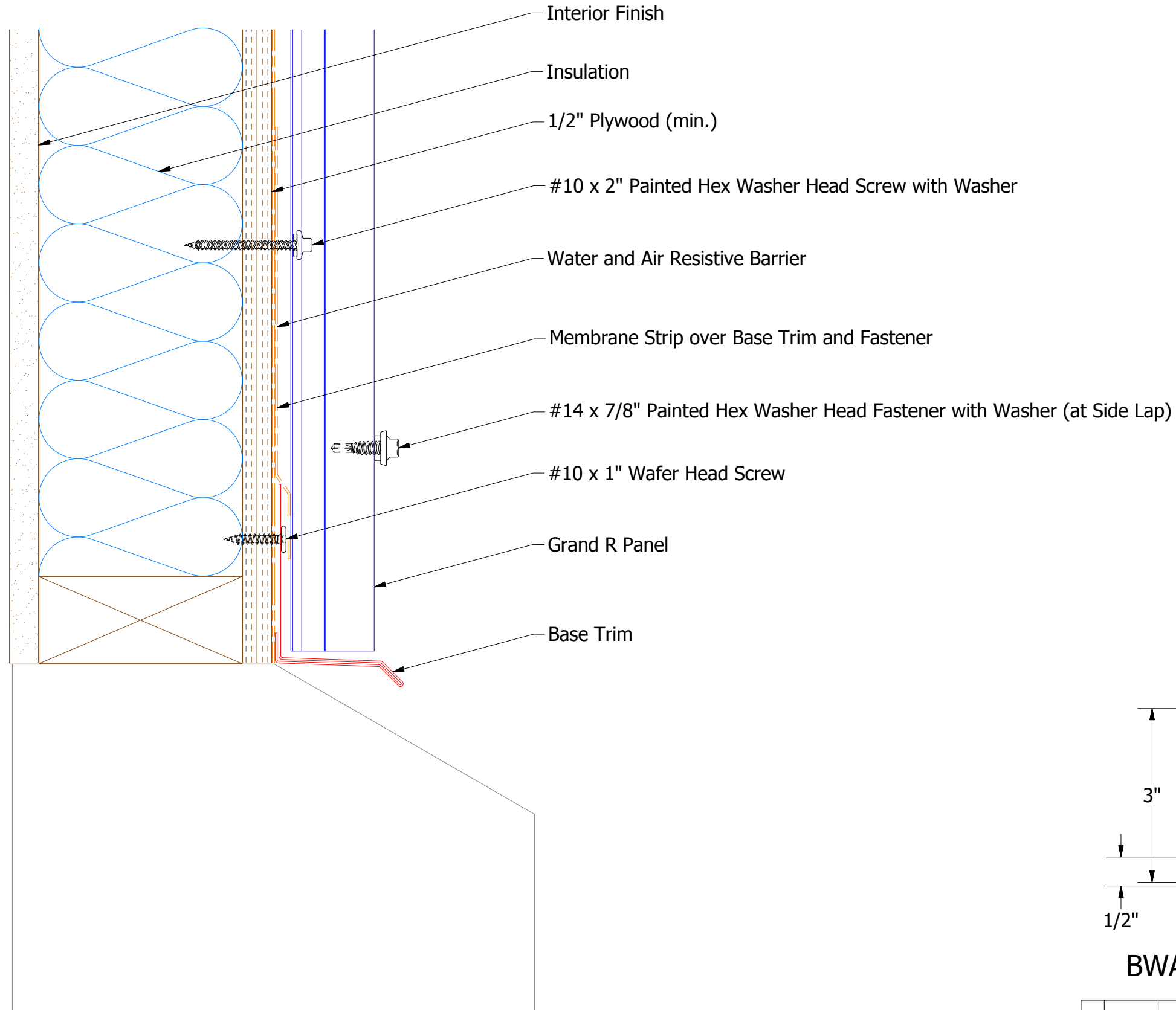
DETAIL A - Panel Lap



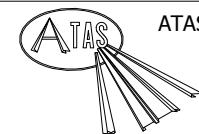
ATAS INTERNATIONAL, INC  
 Allentown PA  
 610-395-8445  
 Mesa AZ  
 480-558-7210

TITLE				Grand R Panel			
DWG. NO.				DR	DMR	DATE 6/9/2016	
MATERIAL				APP	DAS	DATE 7/20/2016	
REV. NO.	DATE	DESCRIPTION OF REVISION	BY	APP	SH. SIZE	B	SCALE X:X

# Vertical Panel



**BWA661 - Base Trim**

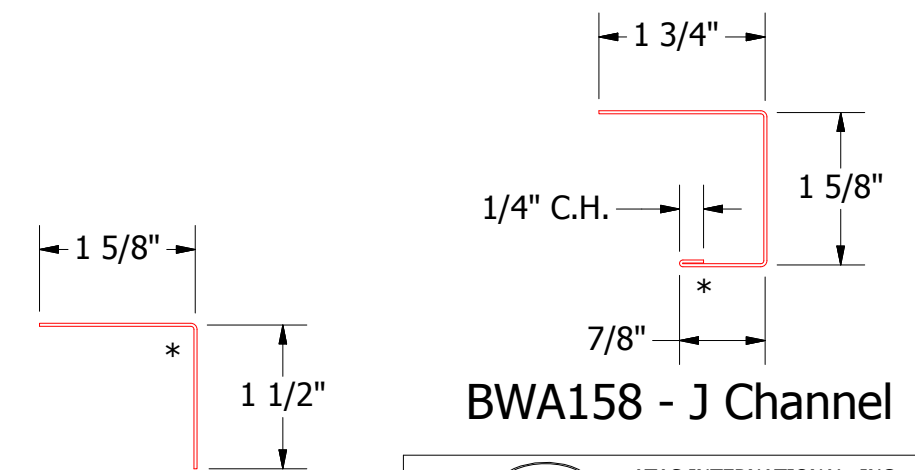
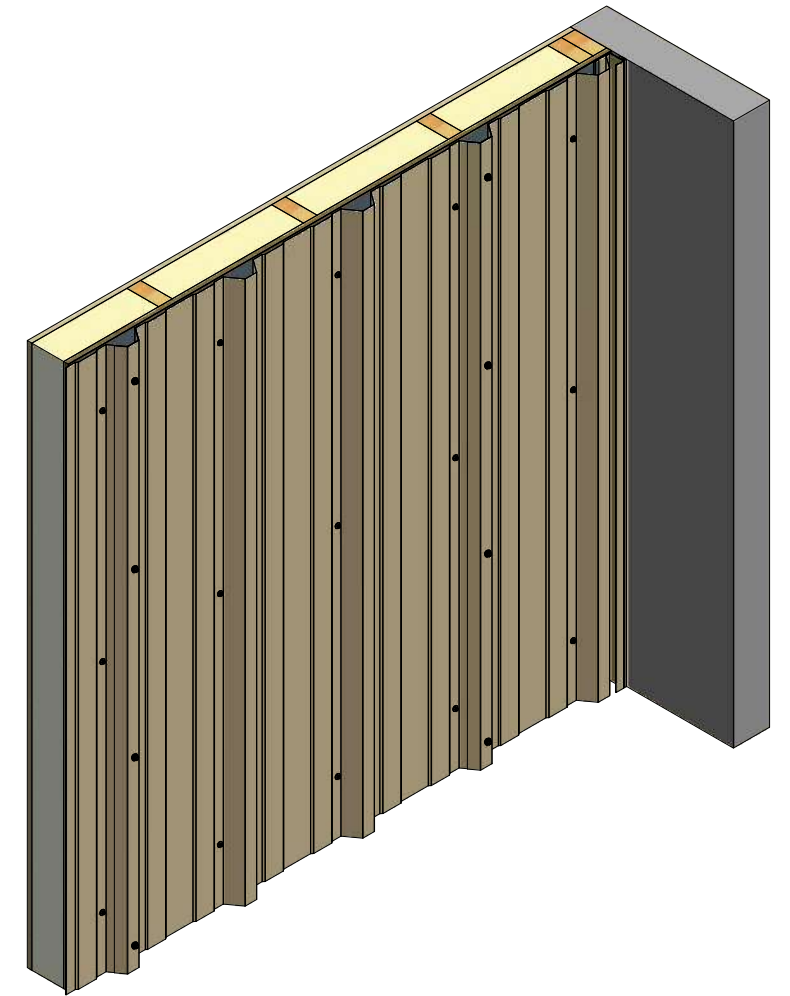
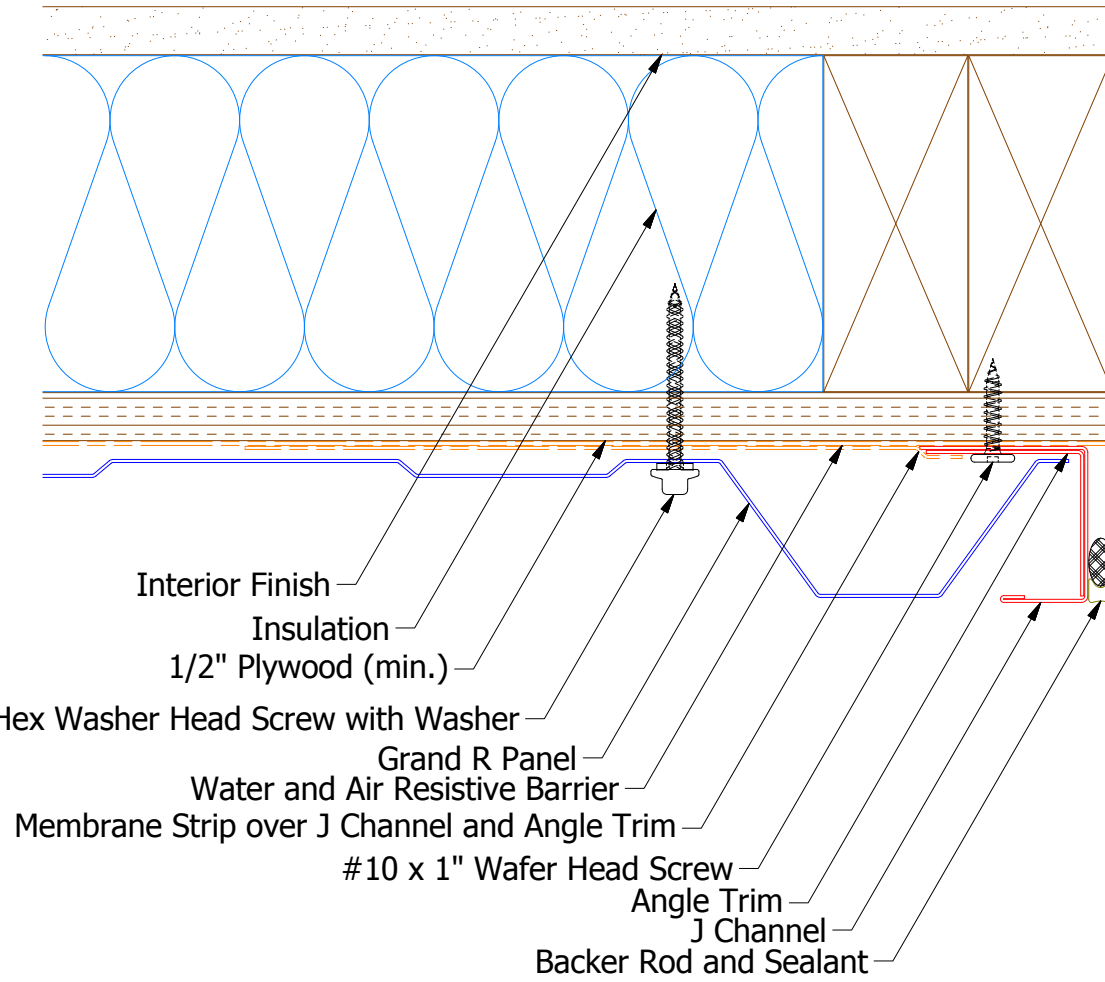


**ATAS INTERNATIONAL, INC**  
 Allentown PA  
 610-395-8445  
 Mesa AZ  
 480-558-7210

TITLE			
<b>Grand R Base Detail</b>			
DWG. NO.	DR	KRK	DATE 2/3/2016
	APP	DAS	DATE 7/20/16
MATERIAL	SH. SIZE	B	SCALE X:X

REV. NO.	DATE	DESCRIPTION OF REVISION	BY	APP

# Vertical Panel



BWA680 - Angle Trim

BWA158 - J Channel

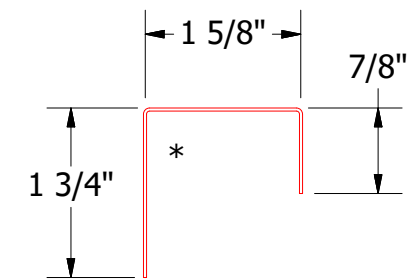
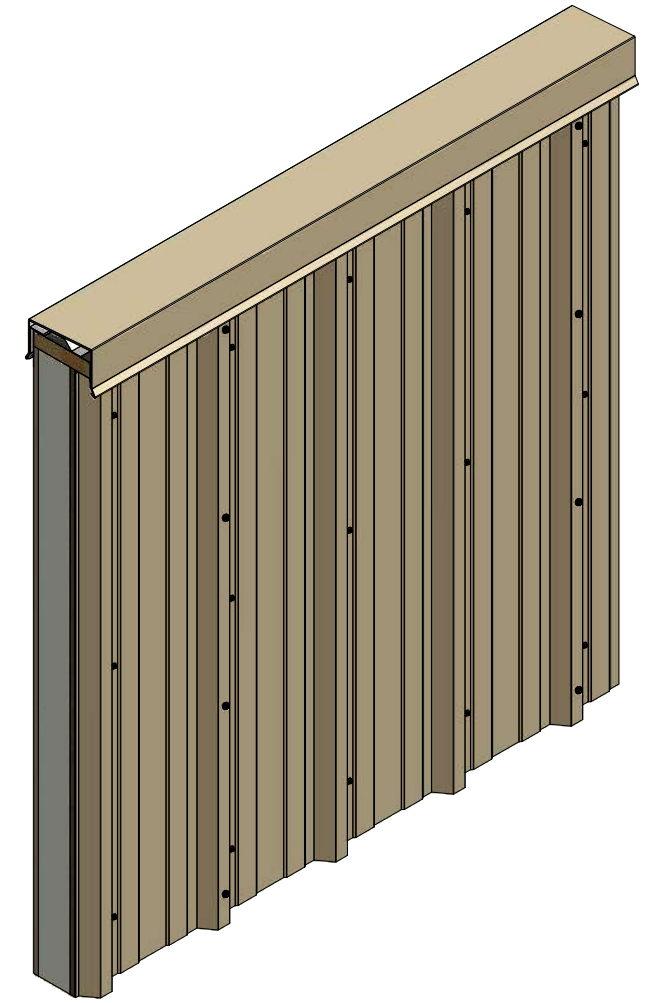
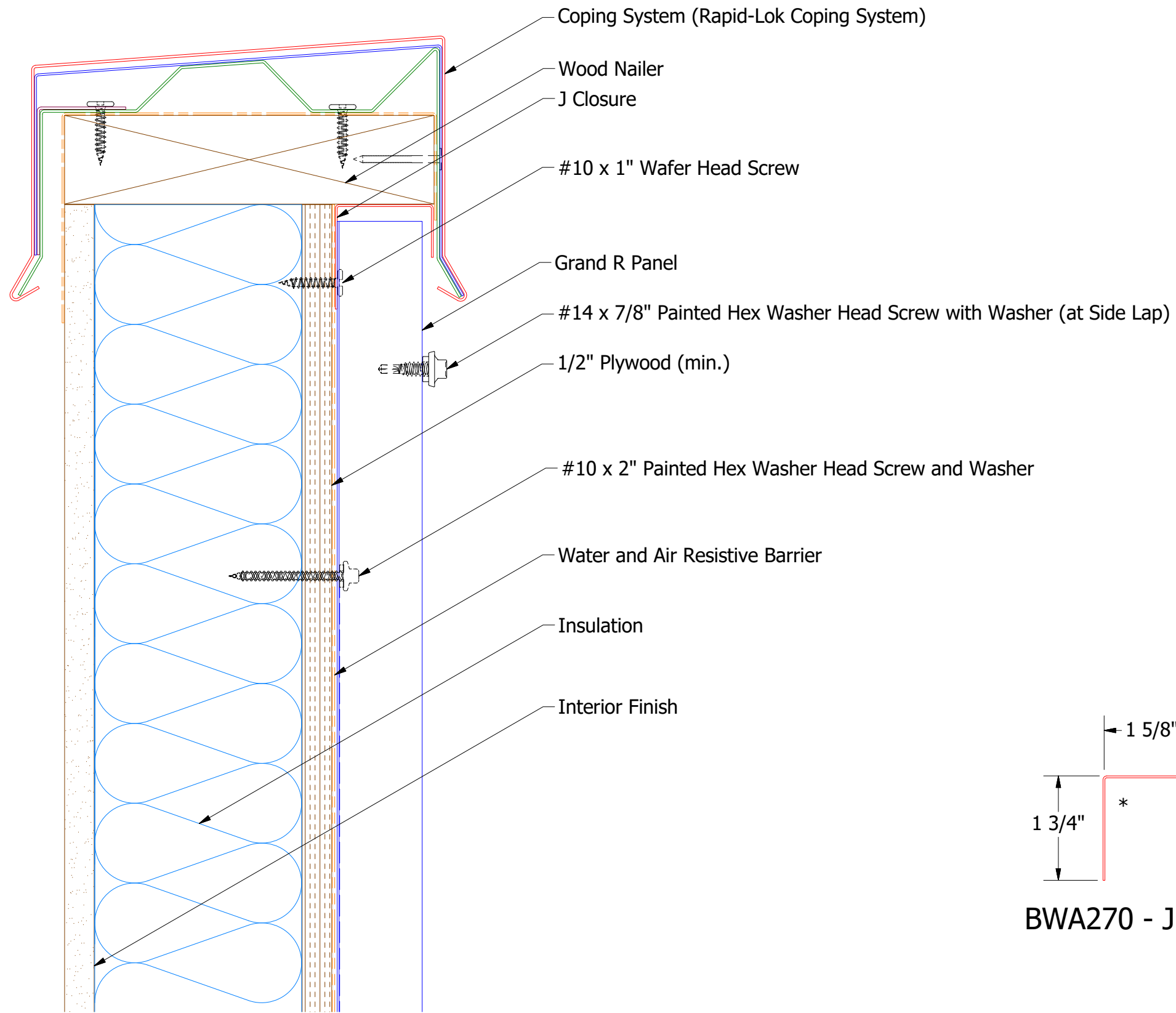
**ATAS** ATAS INTERNATIONAL, INC  
 Allentown PA  
 610-395-8445  
 Mesa AZ  
 480-558-7210

TITLE				Grand R Endwall Detail	
DWG. NO.		DR		DATE	
		KRK		2/4/2016	
MATERIAL		APP		DATE	
		DAS		7/20/16	
REV. NO.	DATE	DESCRIPTION OF REVISION	BY	APP	SCALE
					X:X

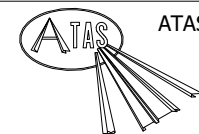




# Vertical Panel



BWA270 - J Closure

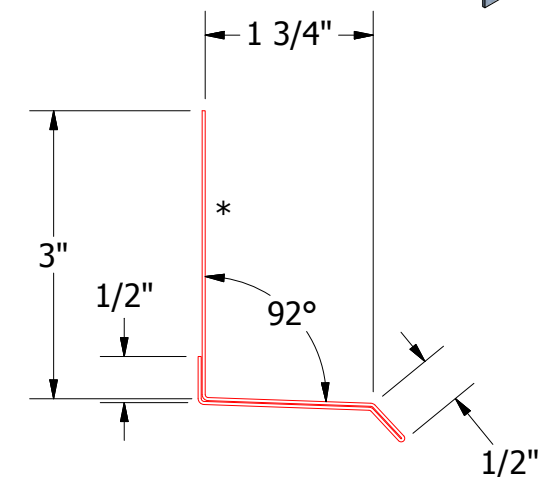
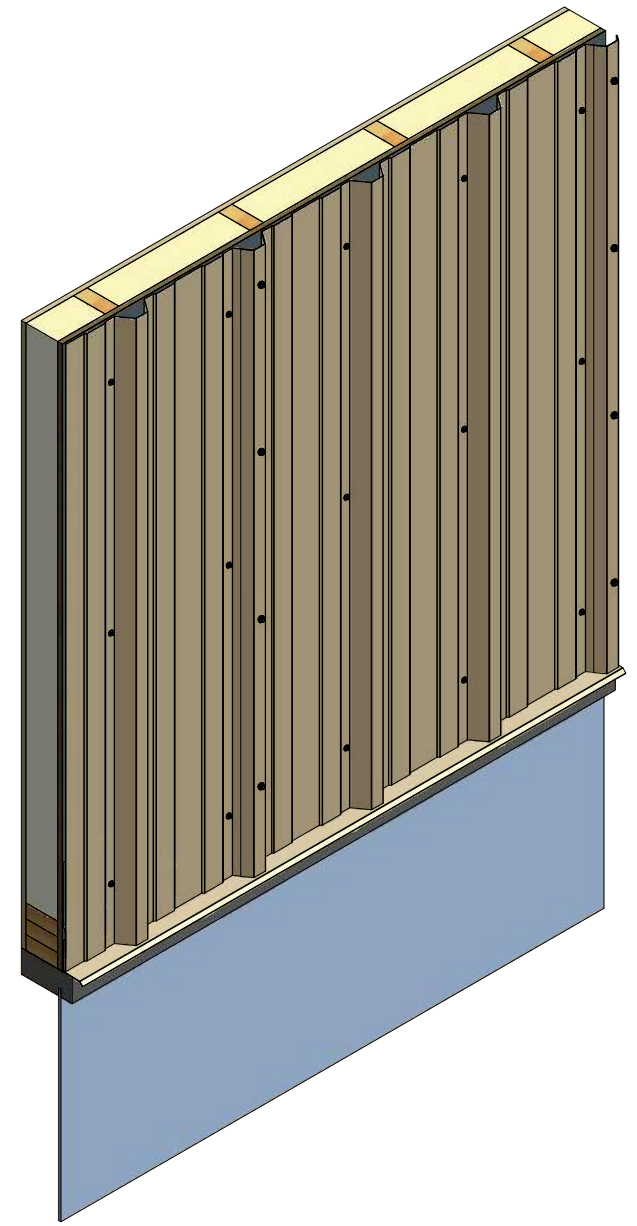
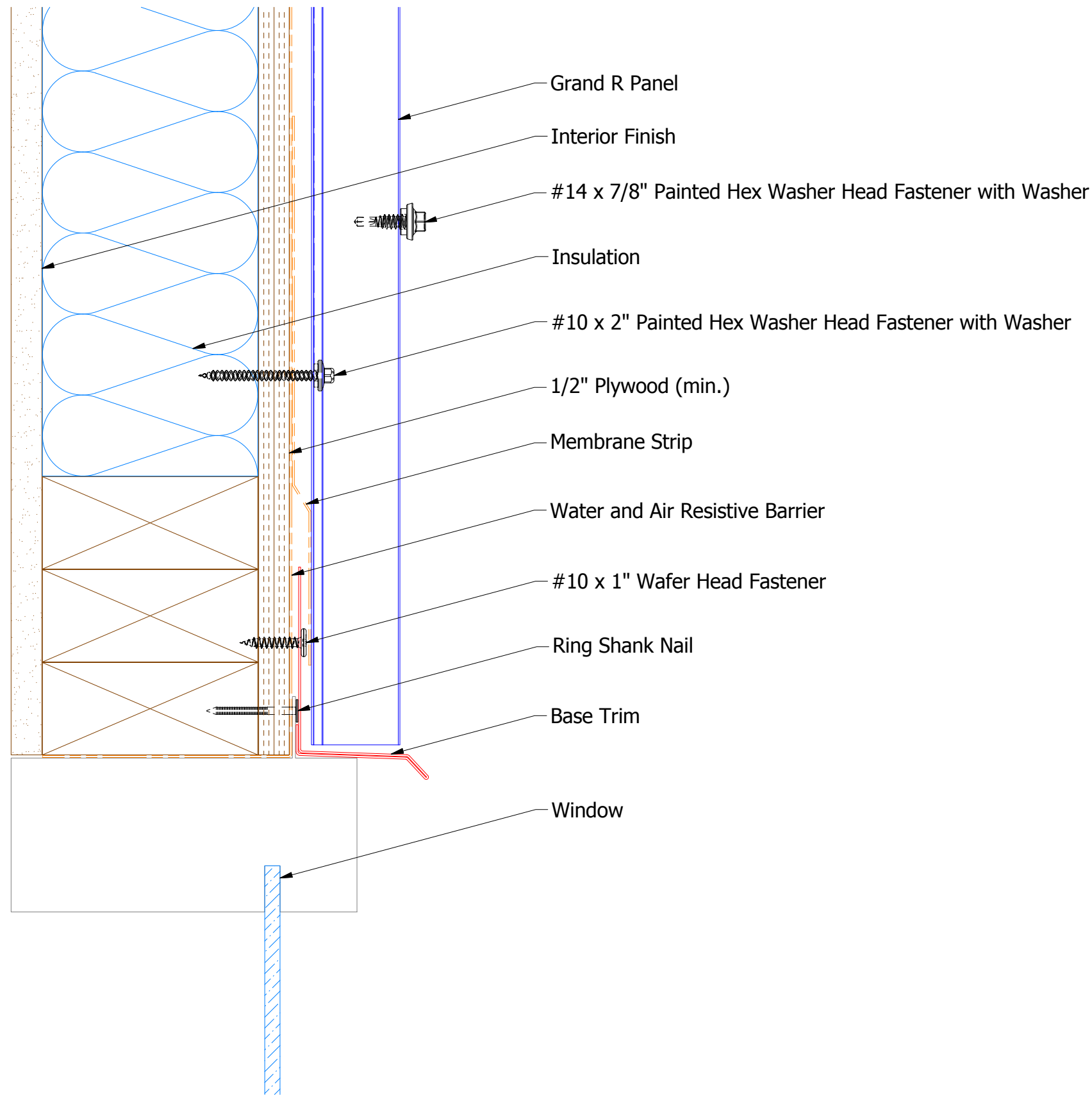


**ATAS INTERNATIONAL, INC**  
 Allentown PA  
 610-395-8445  
 Mesa AZ  
 480-558-7210

TITLE **Grand R Top of Wall Detail**

REV. NO.	DATE	DESCRIPTION OF REVISION	BY	APP	DWG. NO.	DR	DATE
						DMR	6/9/2016
						DAS	7/20/16
					MATERIAL	SH. SIZE	SCALE
						B	X:X

# Vertical Panel



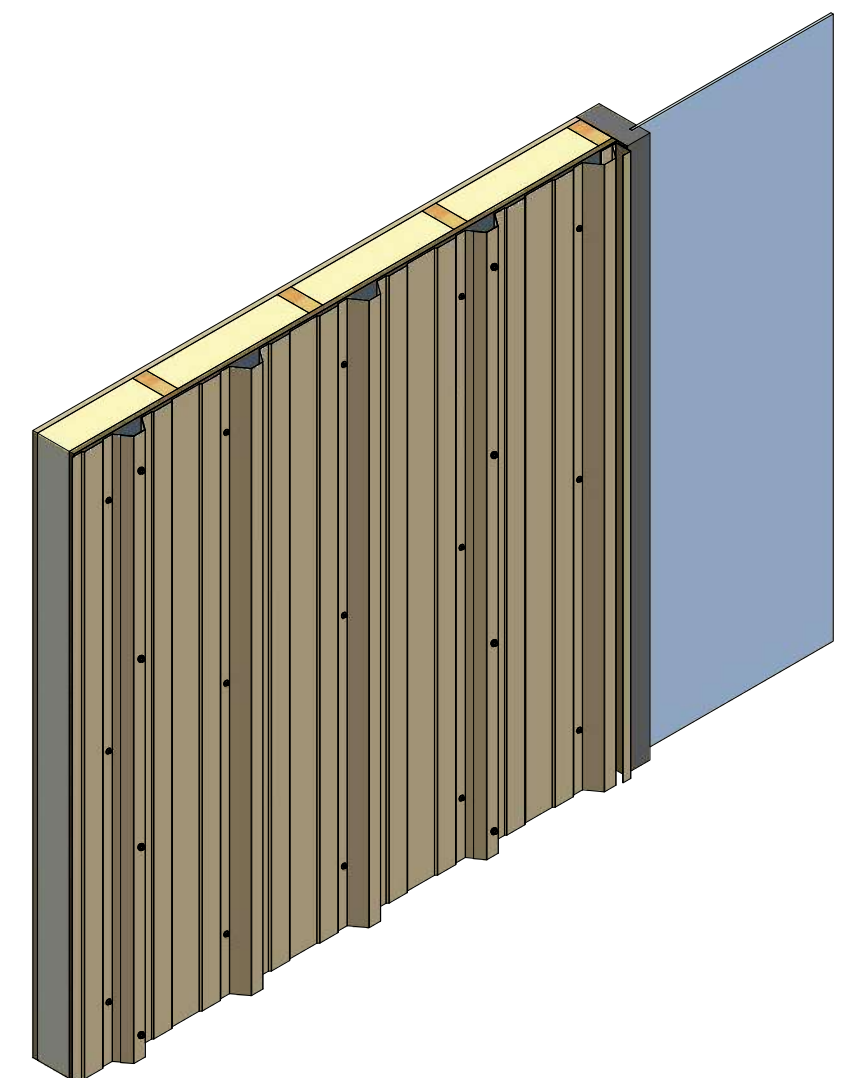
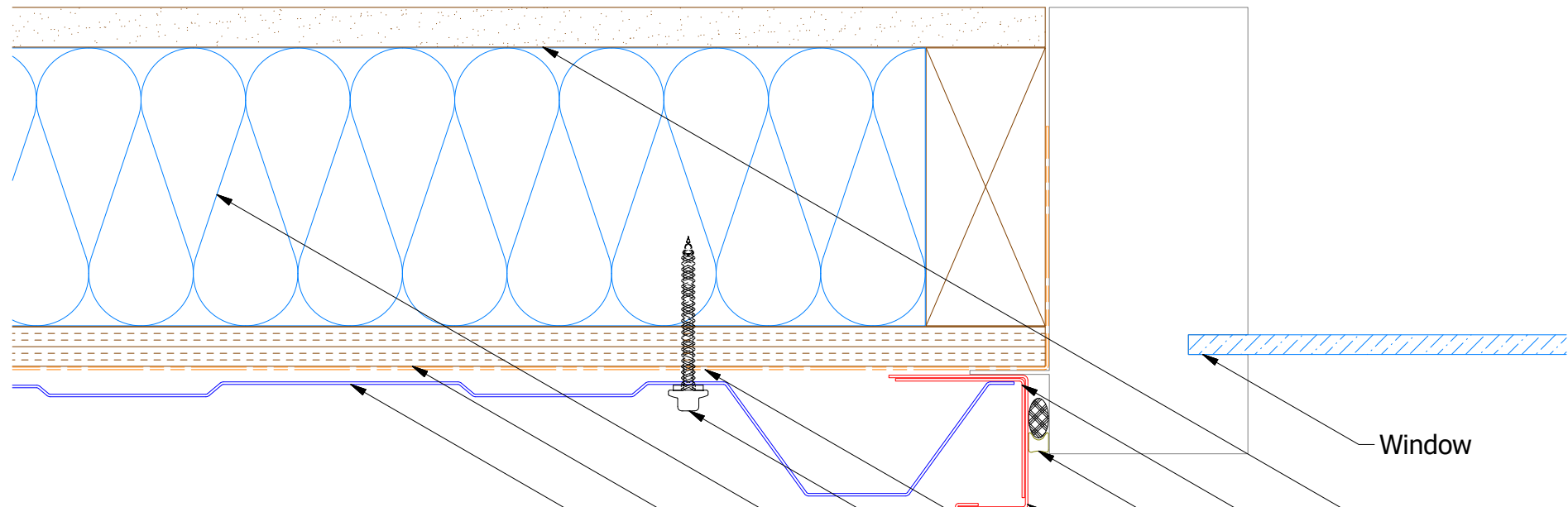
**BWA661 - Base Trim**


**ATAS INTERNATIONAL, INC**  
 Allentown PA  
 610-395-8445  
 Mesa AZ  
 480-558-7210

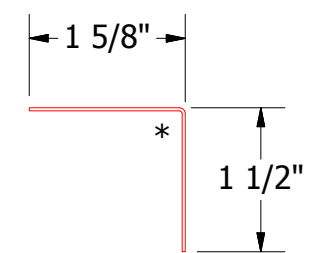
TITLE **Grand R Head Flange Detail**

REV. NO.	DATE	DESCRIPTION OF REVISION	BY	APP	DWG. NO.	DR	DATE
						DMR	7/26/2018
					MATERIAL	APP	DATE
					SH. SIZE	B	SCALE X:X

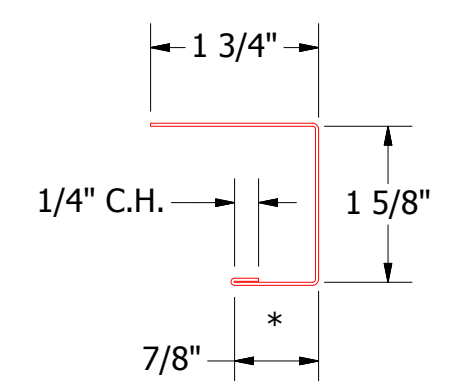
# Vertical Panel



- Window
- Interior Finish
- Angle Trim
- Backer Rod and Sealant
- J Channel
- Water and Air Resistive Barrier
- #10 x 2" Painted Hex Washer Head Fastener with Washer
- Insulation
- 1/2" Plywood (min.)
- Grand R Panel



BWA680 - Angle Trim



BWA158 - J Channel

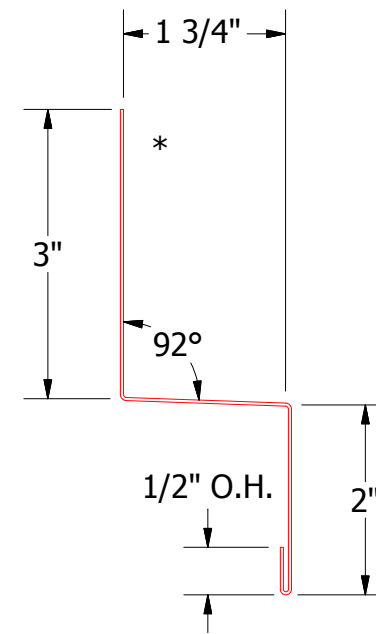
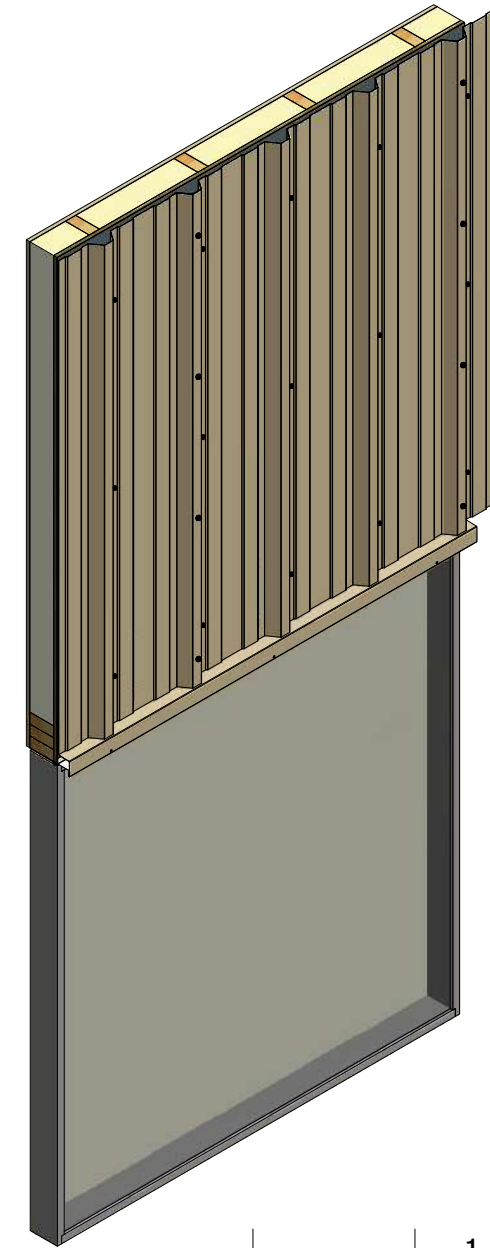
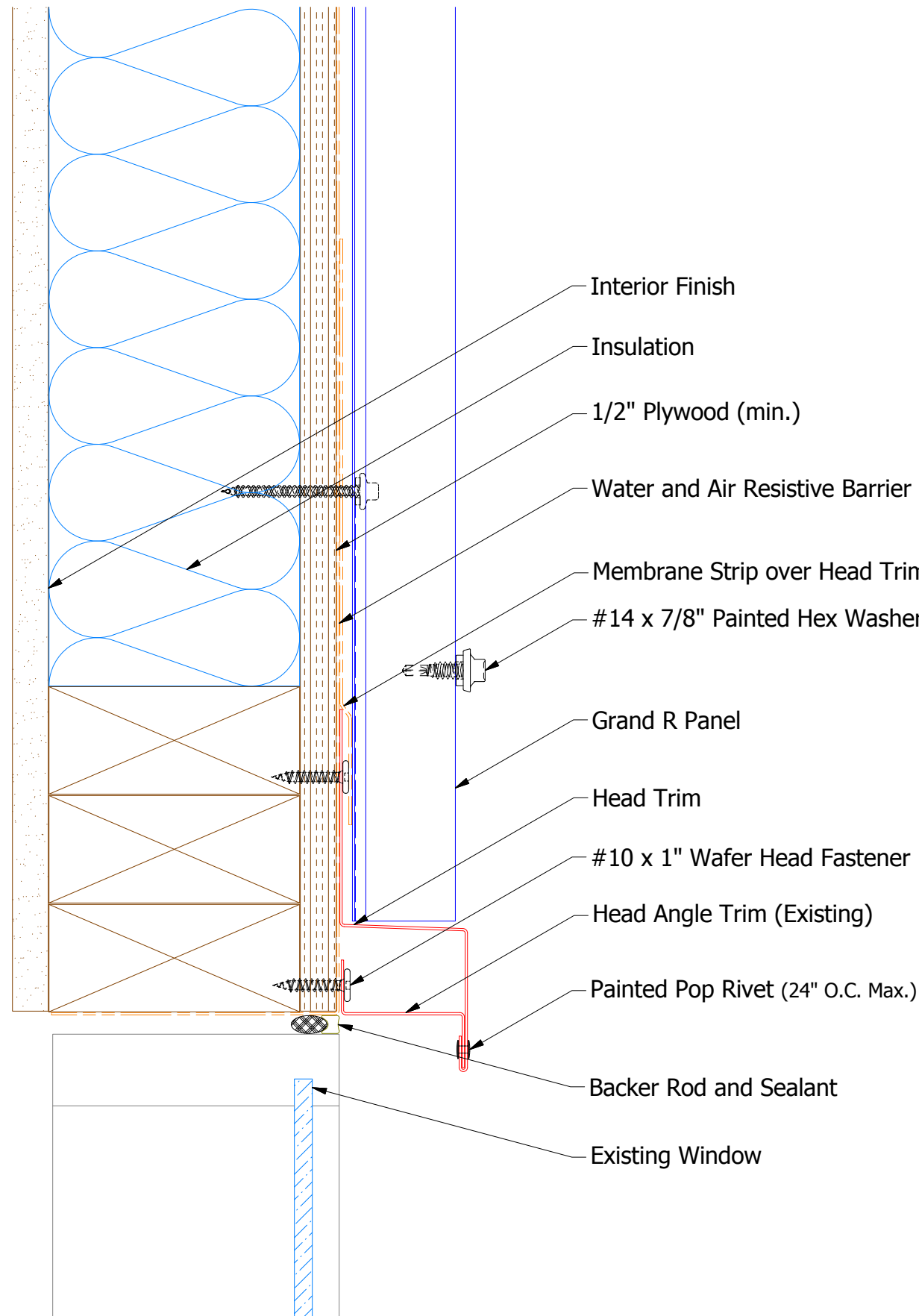
REV. NO.		DATE	DESCRIPTION OF REVISION	BY	APP	TITLE		Grand R Jamb Flange Detail	
						DWG. NO.	DR	DMR	DATE
						MATERIAL	SH. SIZE	B	SCALE
									X:X


**ATAS INTERNATIONAL, INC**  
 Allentown PA  
 610-395-8445  
 Mesa AZ  
 480-558-7210

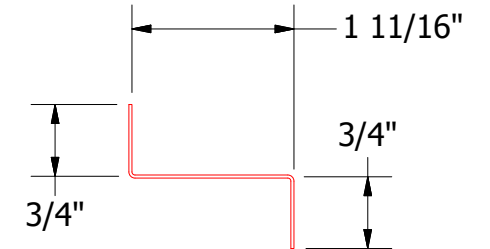




# Vertical Panel



BWA550 - Head Trim



BWA691 - Head Angle Trim (Existing)

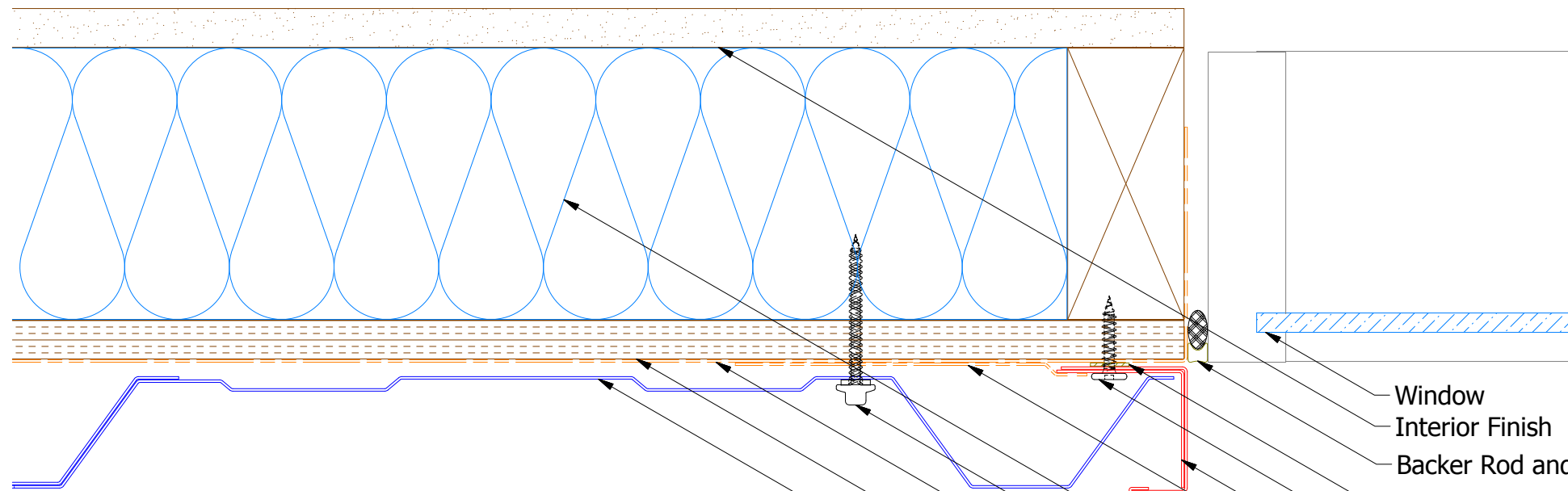


ATAS INTERNATIONAL, INC  
 Allentown PA  
 610-395-8445  
 Mesa AZ  
 480-558-7210

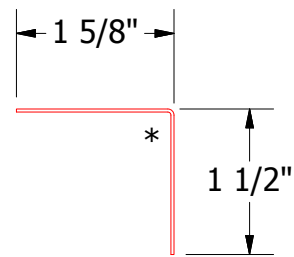
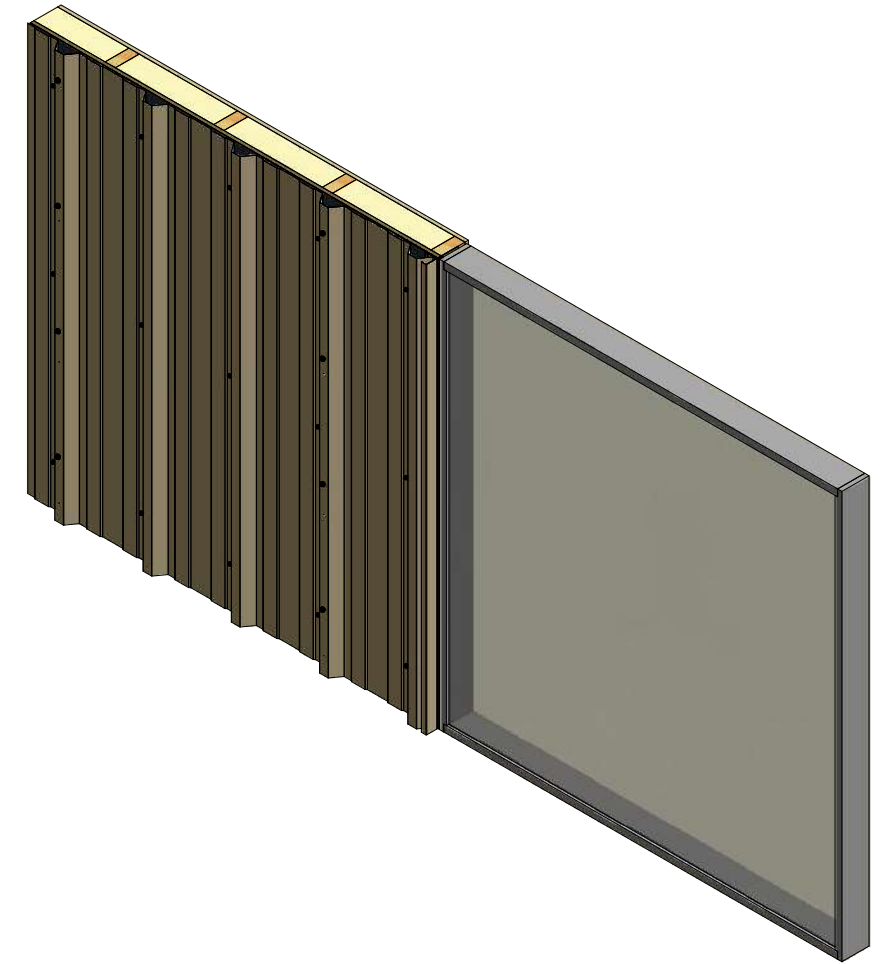
TITLE  
Grand R Panel Head (Existing Window) Detail

REV. NO.	DATE	DESCRIPTION OF REVISION	BY	APP	DWG. NO.	DR	DMR	DATE	7/11/2016
						APP	DAS	DATE	7/25/16
						SH. SIZE	B	SCALE	X:X

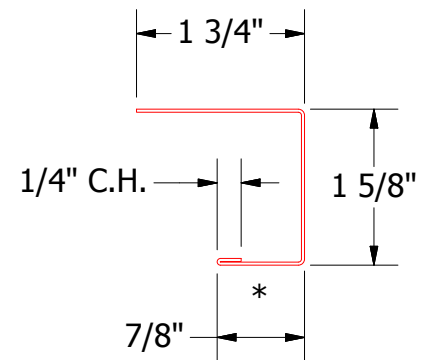
# Vertical Panel



- Window
- Interior Finish
- Backer Rod and Sealant
- Butyl Tape
- #10 x 1" Wafer Head Fastener
- Angle Trim
- Membrane Strip
- J Channel
- Insulation
- #10 x 2" Painted Hex Washer Head Fastener with Washer
- Water and Air Resistive Barrier
- 1/2" Plywood (min.)
- Grand R Panel



**BWA680 - Angle Trim**

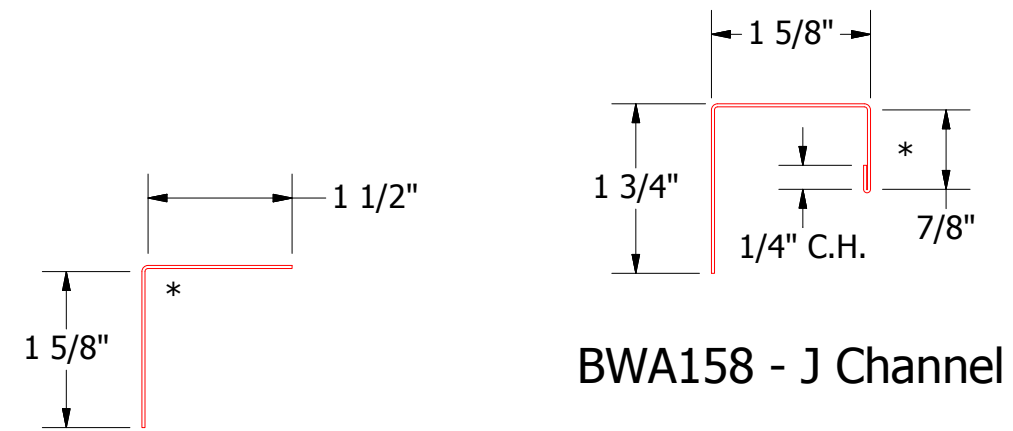
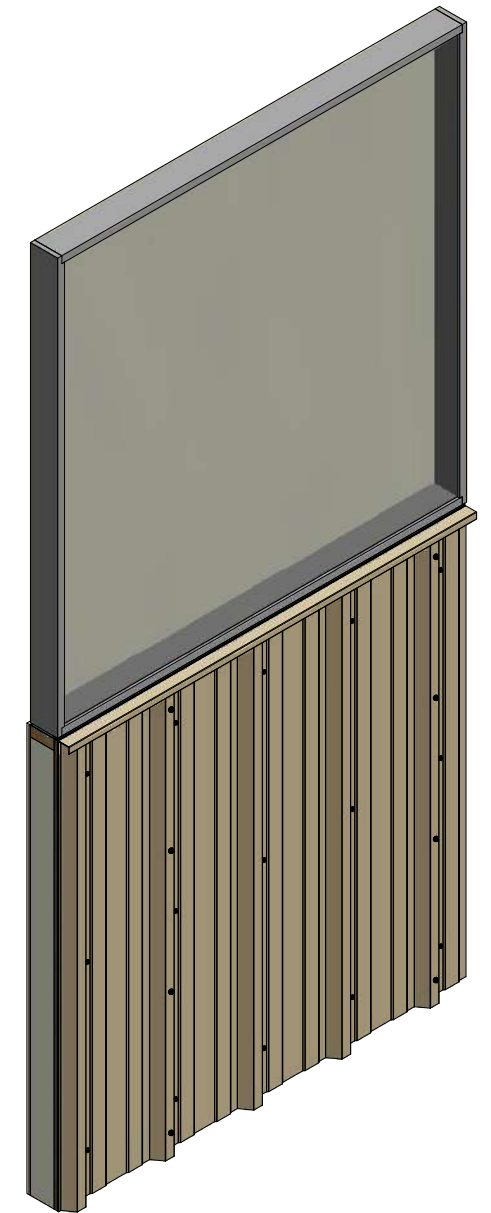
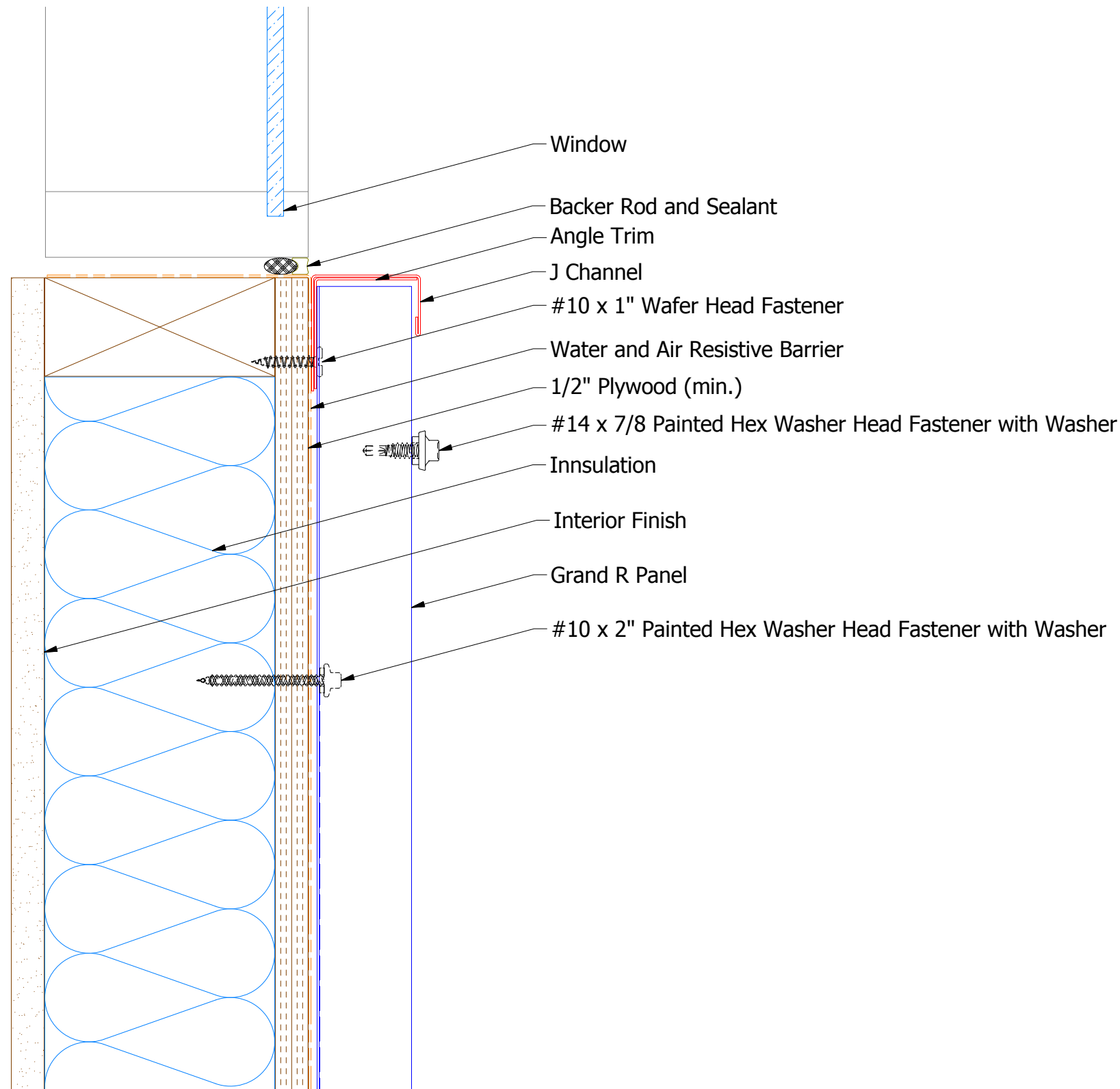


**BWA158 - J Channel**

**ATAS** ATAS INTERNATIONAL, INC  
 Allentown PA  
 610-395-8445  
 Mesa AZ  
 480-558-7210

REV. NO.	DATE	DESCRIPTION OF REVISION	BY	APP	TITLE	DR	DMR	DATE
					Grand R Existing Jamb Detail			6/4/2018
						APP		
						SH. SIZE	B	SCALE X:X

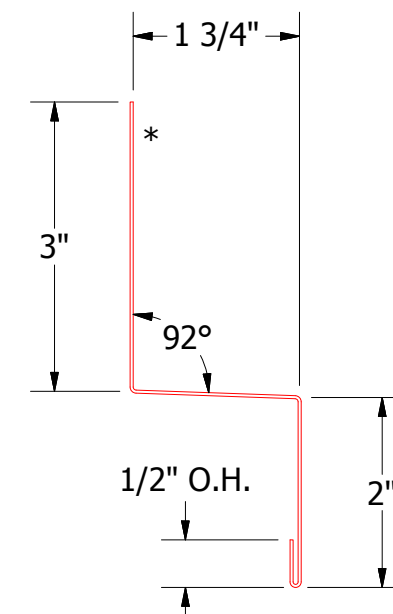
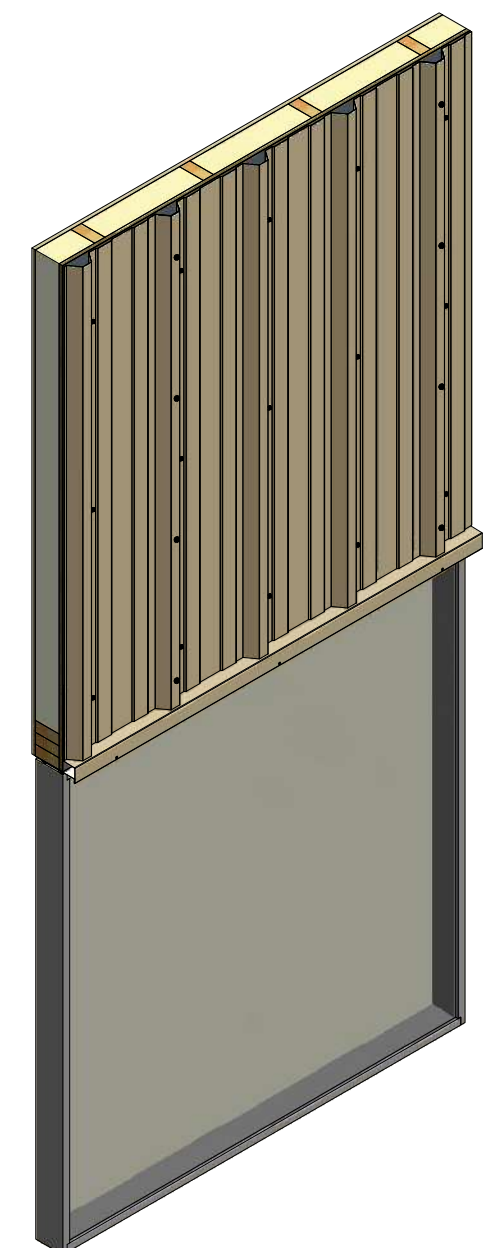
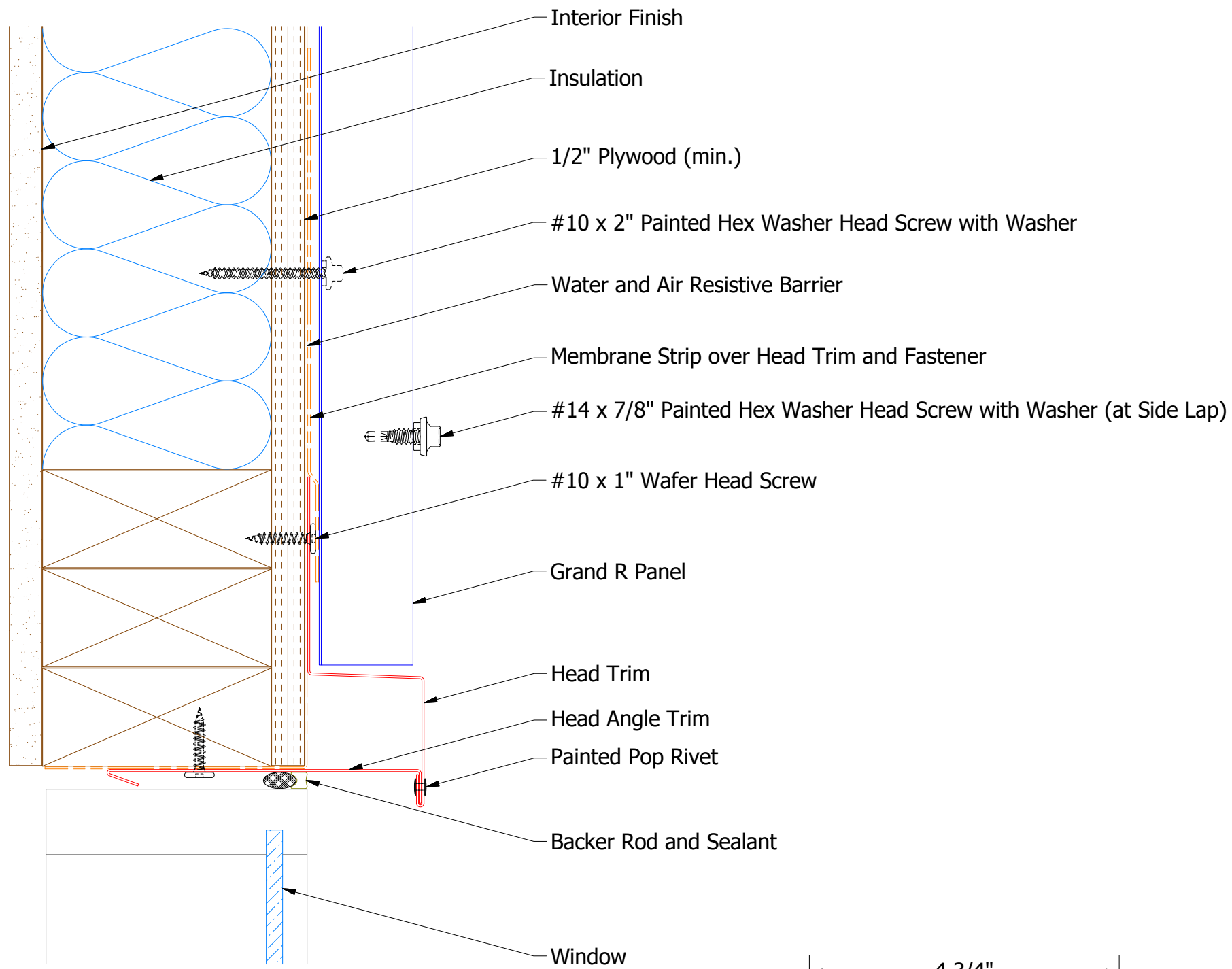
# Vertical Panel



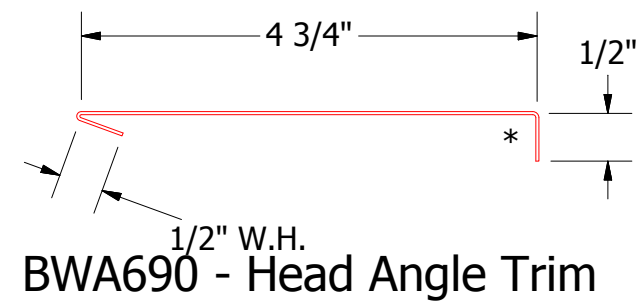

**ATAS INTERNATIONAL, INC**  
 Allentown PA  
 610-395-8445  
 Mesa AZ  
 480-558-7210

REV. NO.				DATE				DESCRIPTION OF REVISION				BY		APP	
TITLE												DR		DATE	
DWG. NO.												DMR		6/7/2018	
MATERIAL												APP		DATE	
SH. SIZE												B		SCALE X:X	

# Vertical Panel

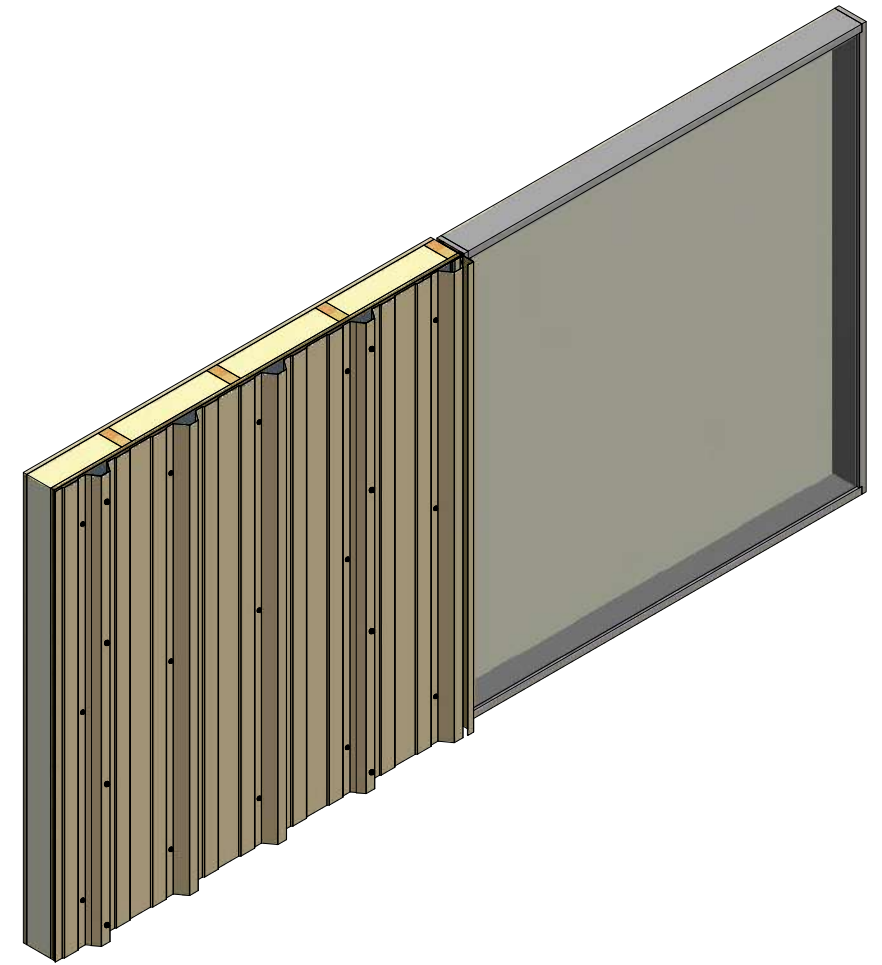
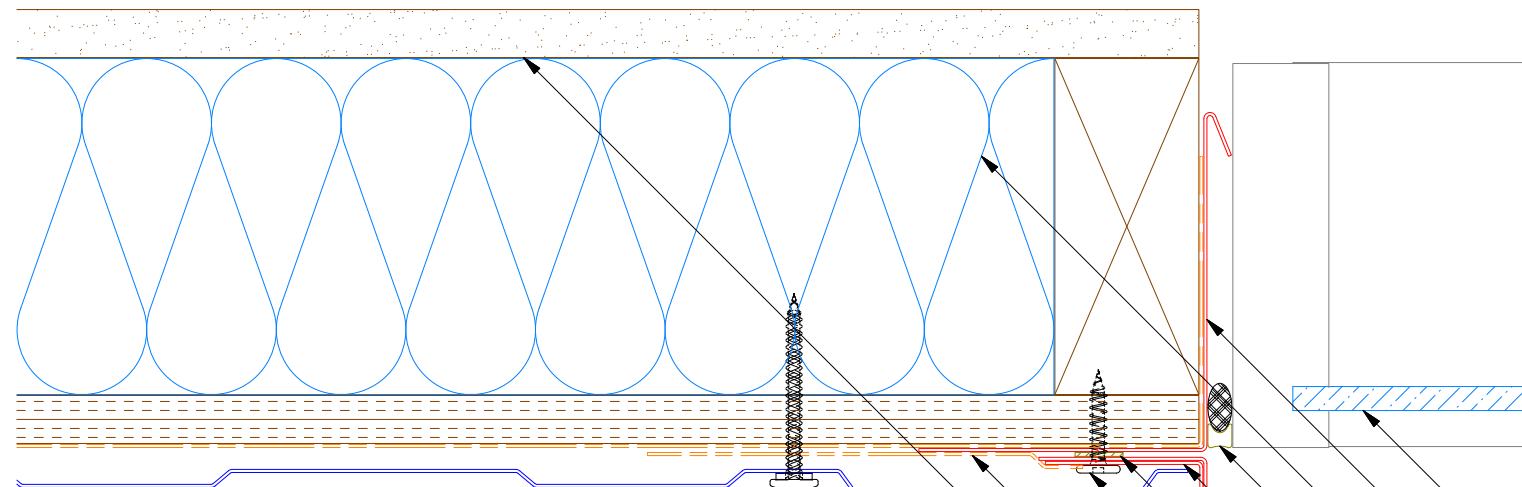


**BWA550 - Head Trim**

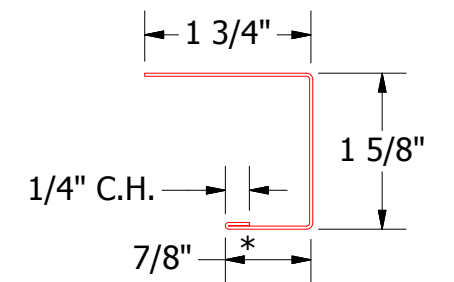


		<b>ATAS INTERNATIONAL, INC</b> Allentown PA 610-395-8445 Mesa AZ 480-558-7210	
<b>Grand R Head Detail</b>			
DWG. NO.	DR	KRK	DATE 2/4/2016
MATERIAL	APP	DAS	DATE 7/20/16
REV. NO.	DATE	DESCRIPTION OF REVISION	BY APP
			SH. SIZE B SCALE X:X

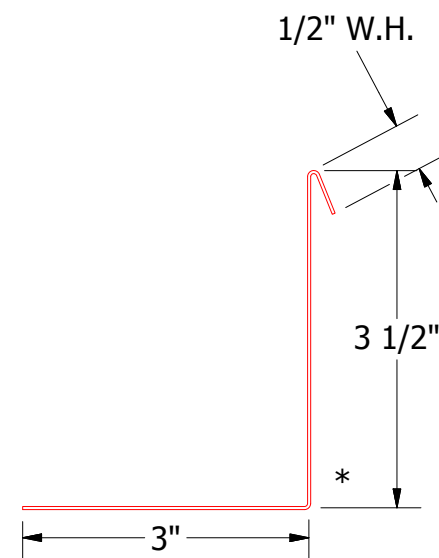
# Vertical Panel



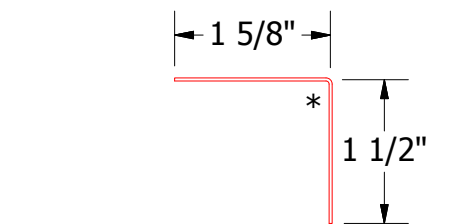
- Window
- Angle Trim with Return
- Insulation
- Backer Rod and Sealant
- Angle Trim
- Butyl Tape
- #10 x 1" Wafer Head Screw
- J Channel
- Membrane Strip over J Channel and Angle Trim
- Interior Finish
- #10 x 2" Painted Hex Washer Head Screw with Washer



**BWA158 - J Channel**



**BWA683 - Angle Trim with Return**



**BWA680 - Angle Trim**

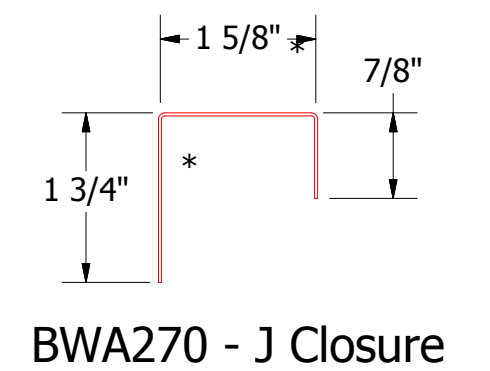
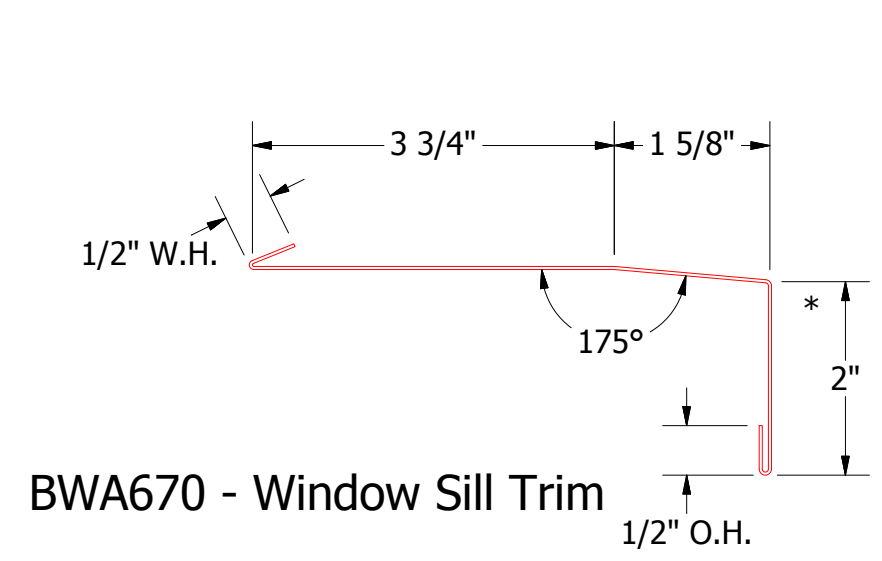
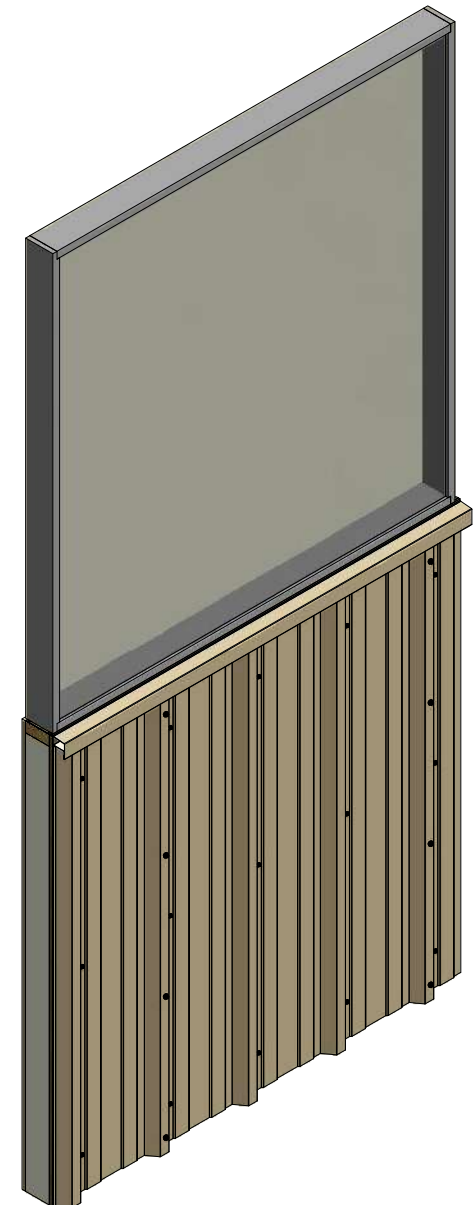
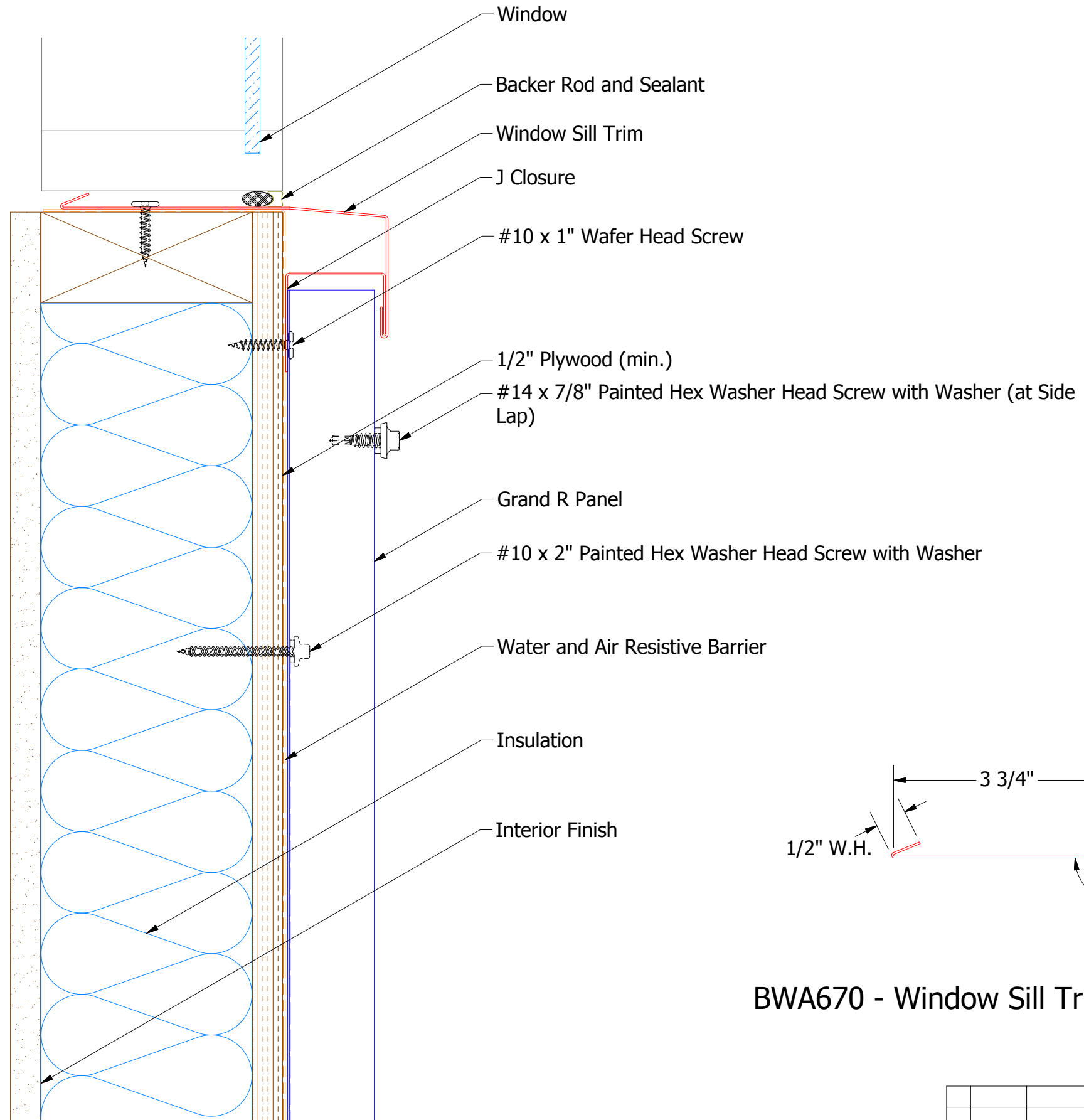
REV. NO.	DATE	DESCRIPTION OF REVISION	BY	APP

TITLE		Grand R Jamb Detail	
DWG. NO.	DR	KRK	DATE 2/4/2016
MATERIAL	APP	DAS	DATE 7/20/16
SH. SIZE	B	SCALE	X:X

**ATAS** ATAS INTERNATIONAL, INC  
 Allentown PA  
 610-395-8445  
 Mesa AZ  
 480-558-7210

# Vertical Panel



**ATAS** ATAS INTERNATIONAL, INC  
 Allentown PA  
 610-395-8445  
 Mesa AZ  
 480-558-7210

TITLE				<b>Grand R Window Sill</b>	
DWG. NO.		DR		DATE	
		DMR		6/9/2016	
MATERIAL		APP		DATE	
		DAS		7/20/16	
REV. NO.	DATE	DESCRIPTION OF REVISION	BY	APP	SCALE
					X:X