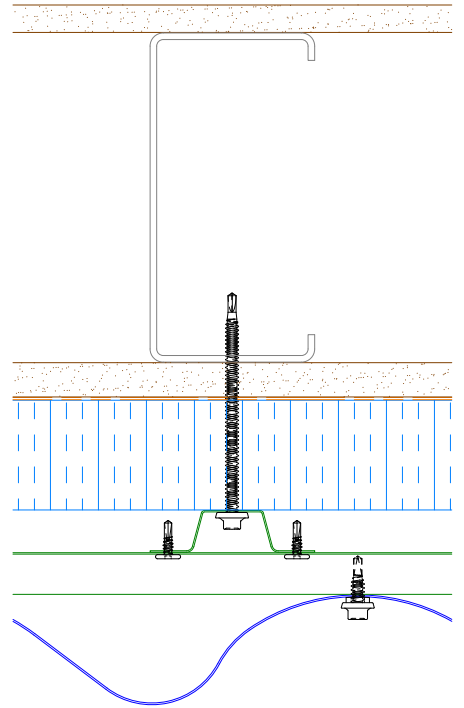
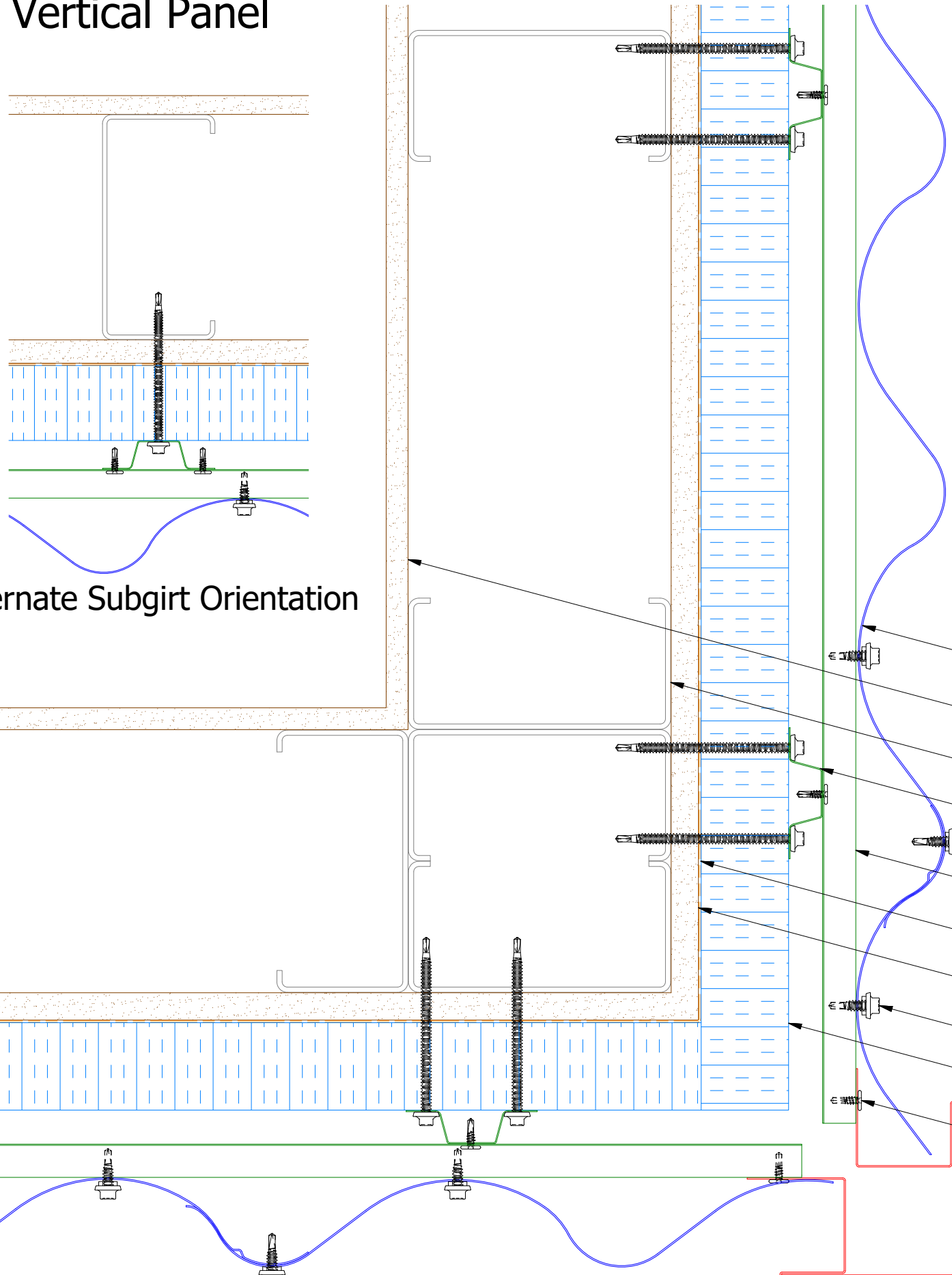


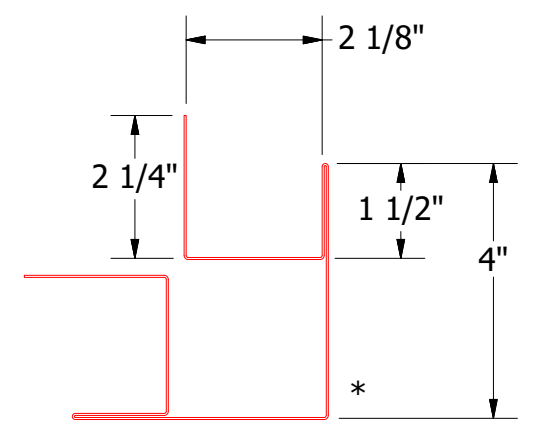
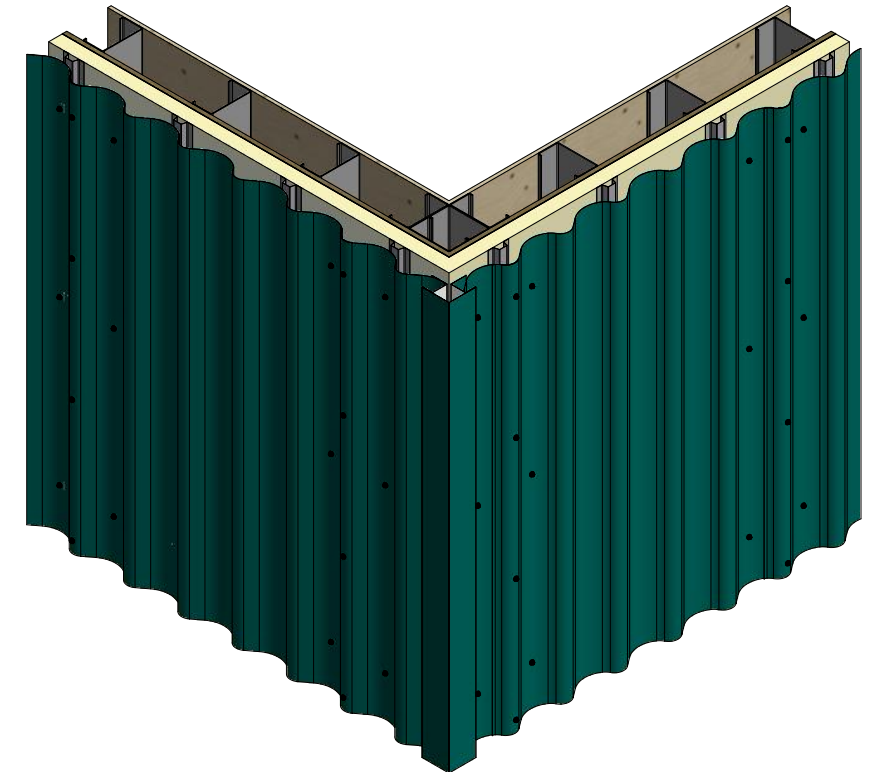
Vertical Panel



Alternate Subgirt Orientation



- Wave Panel
- Interior Finish
- Metal Wall Stud
- Vertical Subgirt
- #14 x 7/8" Painted Hex Washer Head Fastener with Washer
- Horizontal Subgirt
- Water and Air Resistive Barrier
- Exterior Gypsum Board
- #14 x 7/8" Painted Hex Washer Head Fastener with Washer
- Water Resistant Insulation
- #10 x 5/8" Wafer Head Fastener
- Outside Corner Post



BVA602-Outside Corner Post

2 Stage Method of Weather Proofing


ATAS INTERNATIONAL, INC
 Allentown PA
 610-395-8445
 Mesa AZ
 480-558-7210

TITLE Wave Panel Outside Corner Detail

REV. NO.	DATE	DESCRIPTION OF REVISION	BY	APP	DWG. NO.	DR	DATE
						KRK	5/15/2015
					MATERIAL	APP	DATE
					SH. SIZE	B	SCALE
							X:X