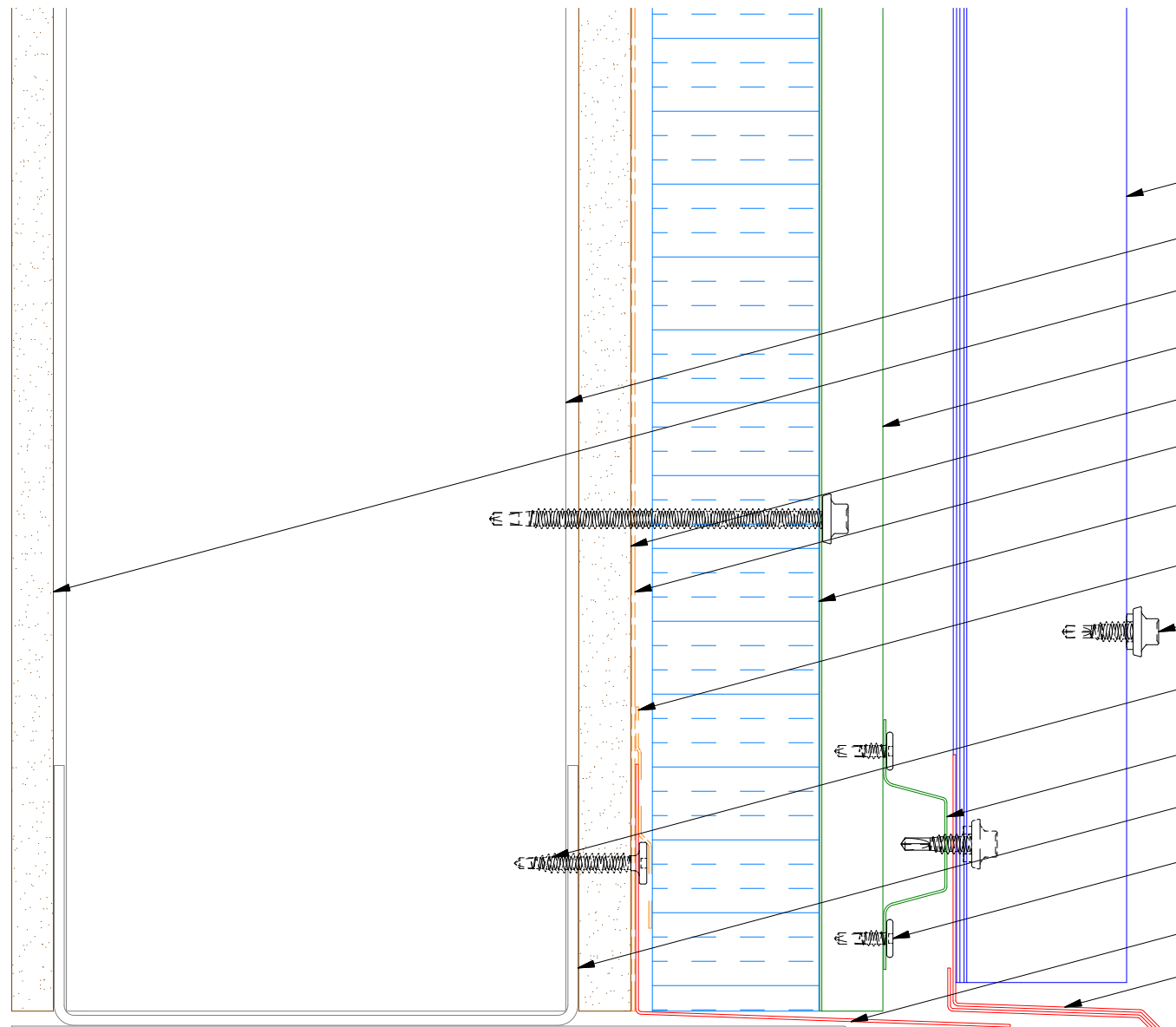
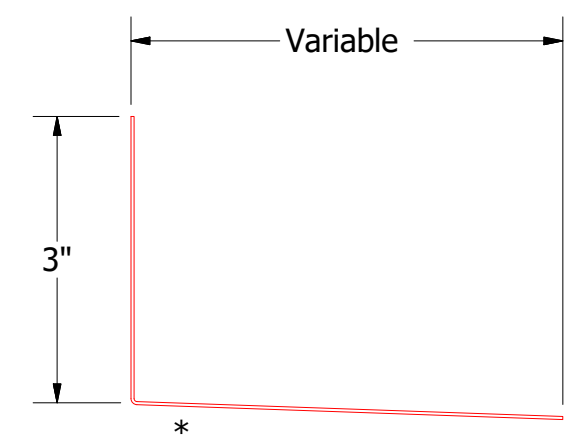
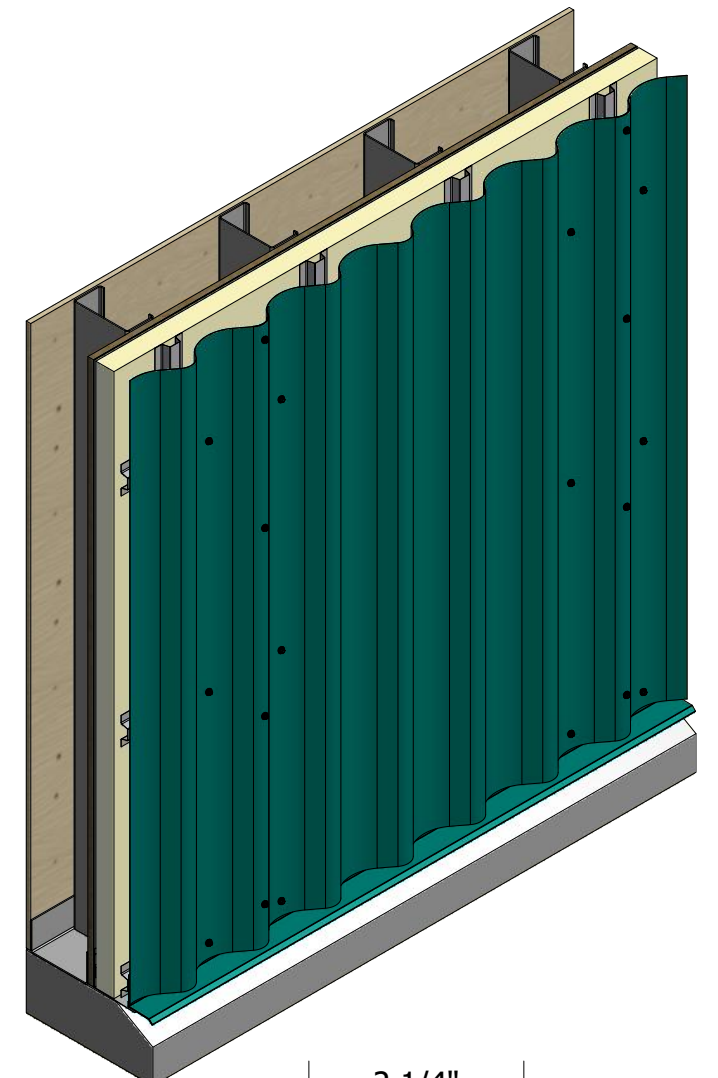


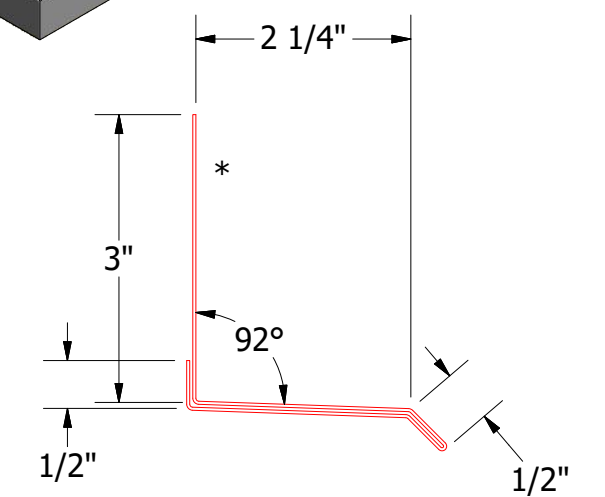
Vertical Panel



- Wave Panel
- Metal Wall Stud
- Interior Finish
- Vertical Subgirt
- Exterior Gypsum Board
- Water and Air Resistive Barrier
- Water Resistant Insulation
- Counterflashing (by others)
- #14 x 7/8" Painted Hex Washer Head Fastener with Washer
- Fastener Flashing (by others)
- Horizontal Subgirt
- Metal Stud
- #10 x 5/8" Wafer Head Fastener
- Flashing by others
- Base Trim



Flashing
(Field Fabricated From Color Matched Flat Stock)



BVA661- Base Trim

2 Stage Method of Weather Proofing

ATAS ATAS INTERNATIONAL, INC
Allentown PA
610-395-8445
Mesa AZ
480-558-7210

TITLE **Wave Panel Base Detail**

REV. NO.	DATE	DESCRIPTION OF REVISION	BY	APP	DWG. NO.	DR	DATE
						KRK	5/11/2015
					MATERIAL	APP	DATE
					SH. SIZE	B	SCALE
							X:X