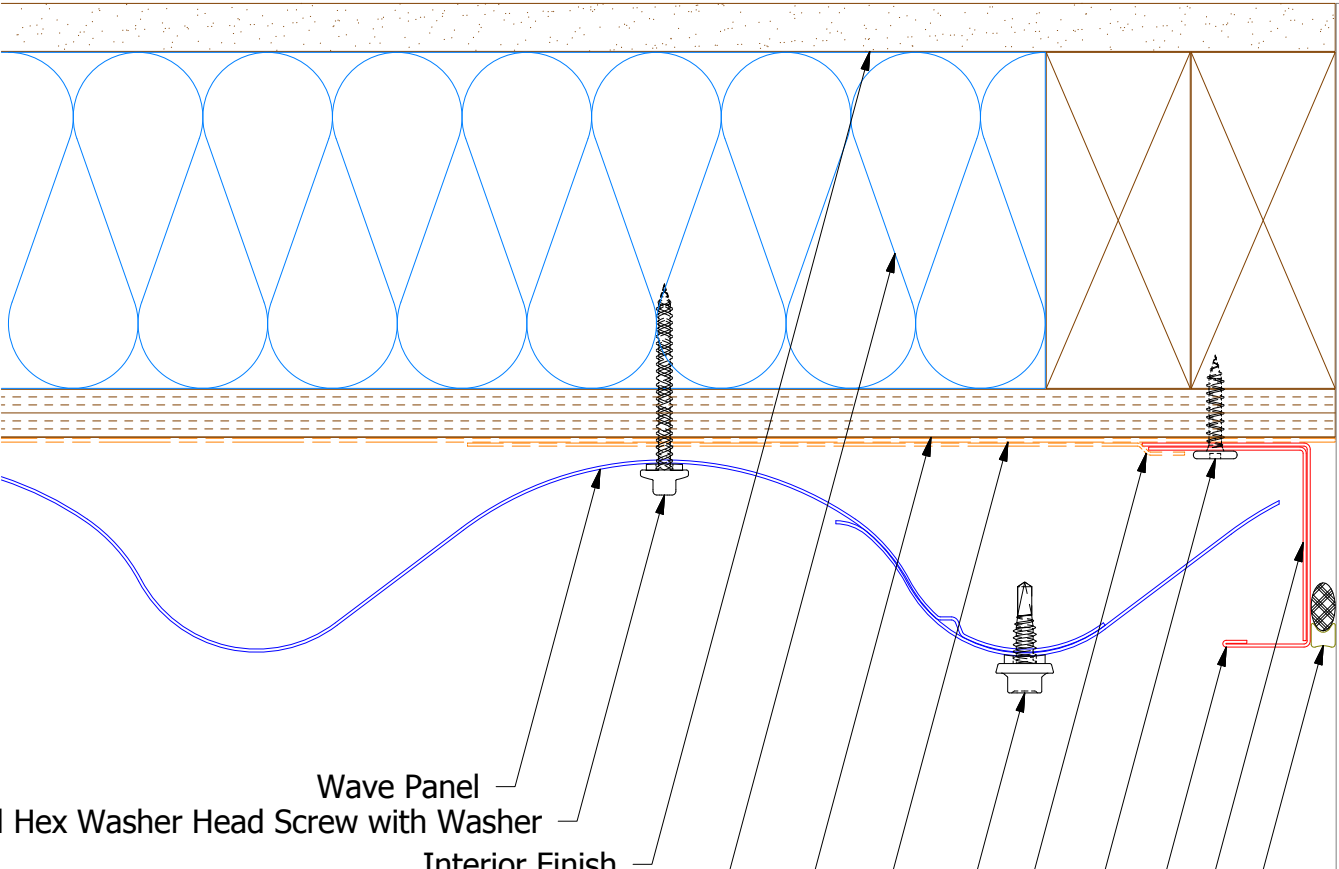
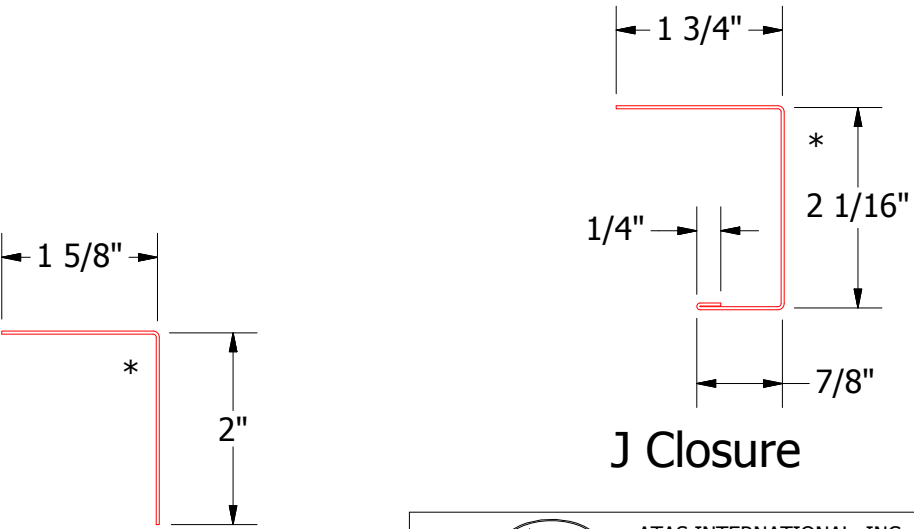
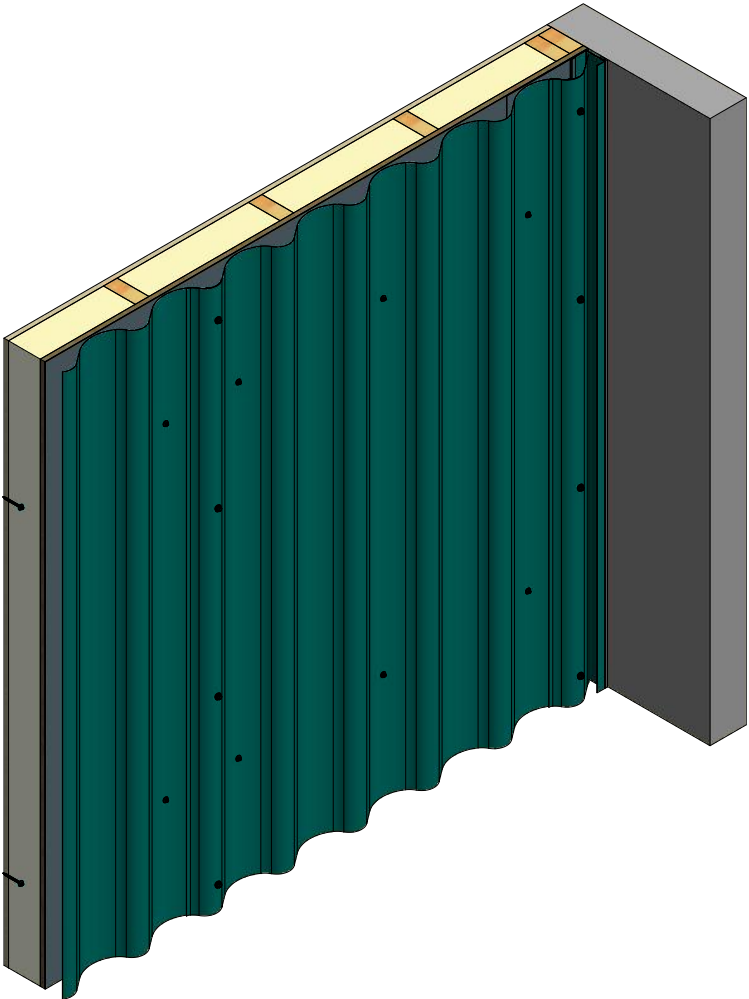


Vertical Panel



- Wave Panel
- #10 x 2" Painted Hex Washer Head Screw with Washer
- Interior Finish
- Insulation
- 1/2" Plywood (min.)
- Water and Air Resistive Barrier
- #14 x 7/8" Painted Hex Washer Head Fastener with Washer
- Membrane Strip over J Channel and Angle Trim
- #10 x 1" Wafer Head Screw
- J Channel
- Angle Trim
- Backer Rod and Sealant



Angle Trim

J Closure

ATAS ATAS INTERNATIONAL, INC
Allentown PA
610-395-8445
Mesa AZ
480-558-7210

					Wave Panel Endwall Detail			
					DWG. NO.		DR	DATE
							DMR	8/30/2016
							APP	DATE
					MATERIAL		SH. SIZE	SCALE
REV. NO.	DATE	DESCRIPTION OF REVISION			BY	APP	B	X:X