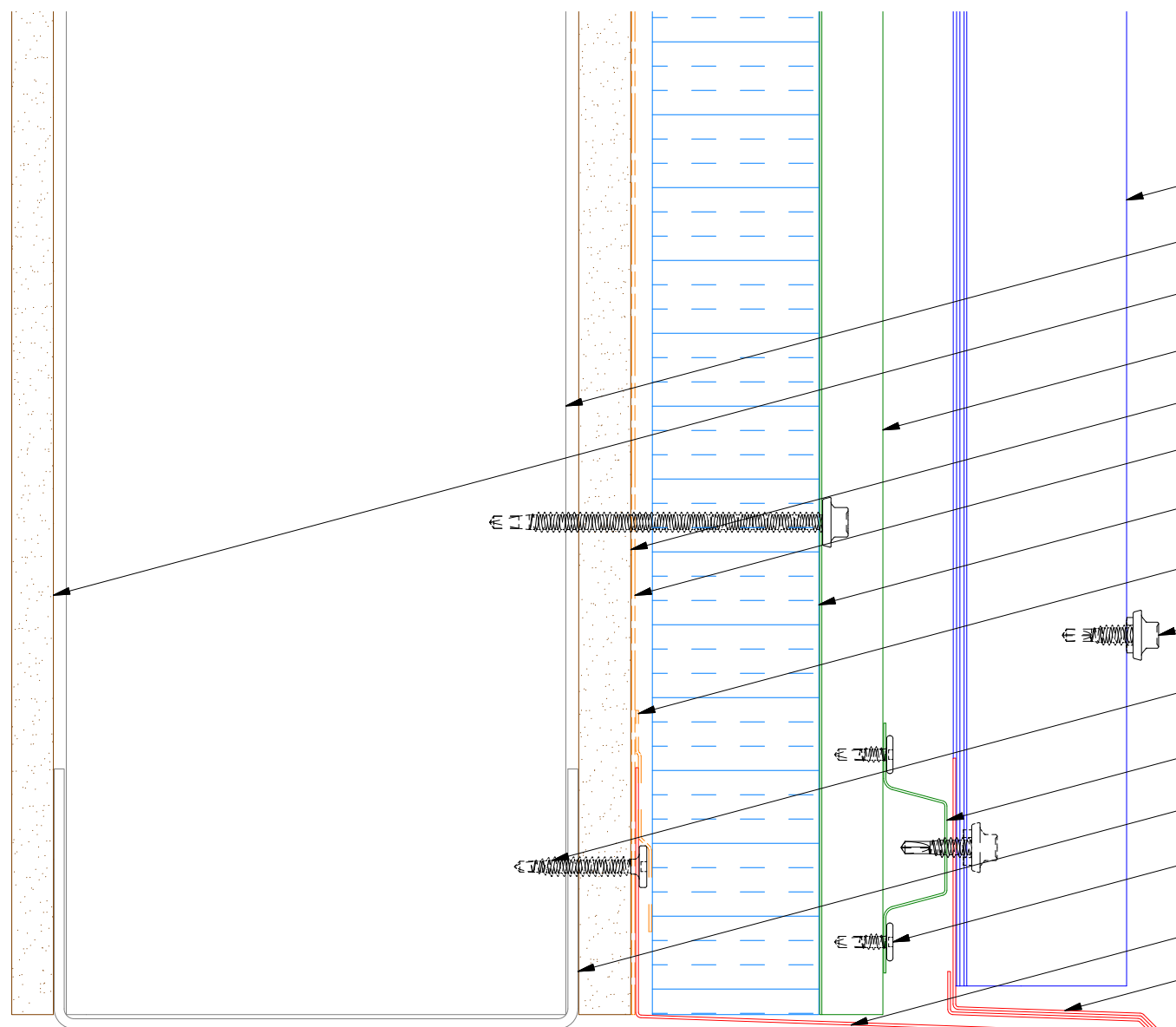


ATAS INTERNATIONAL, INC
 Allentown PA
 610-395-8445
 Mesa AZ
 480-558-7210

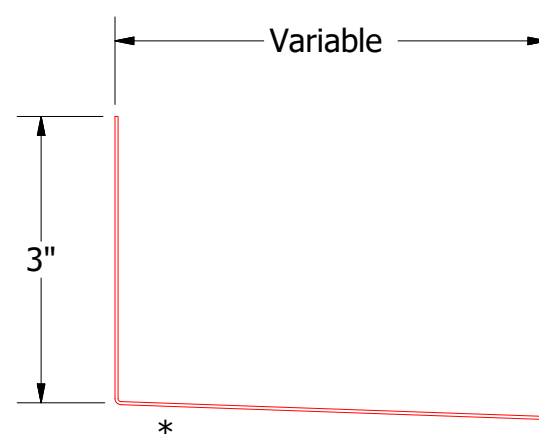
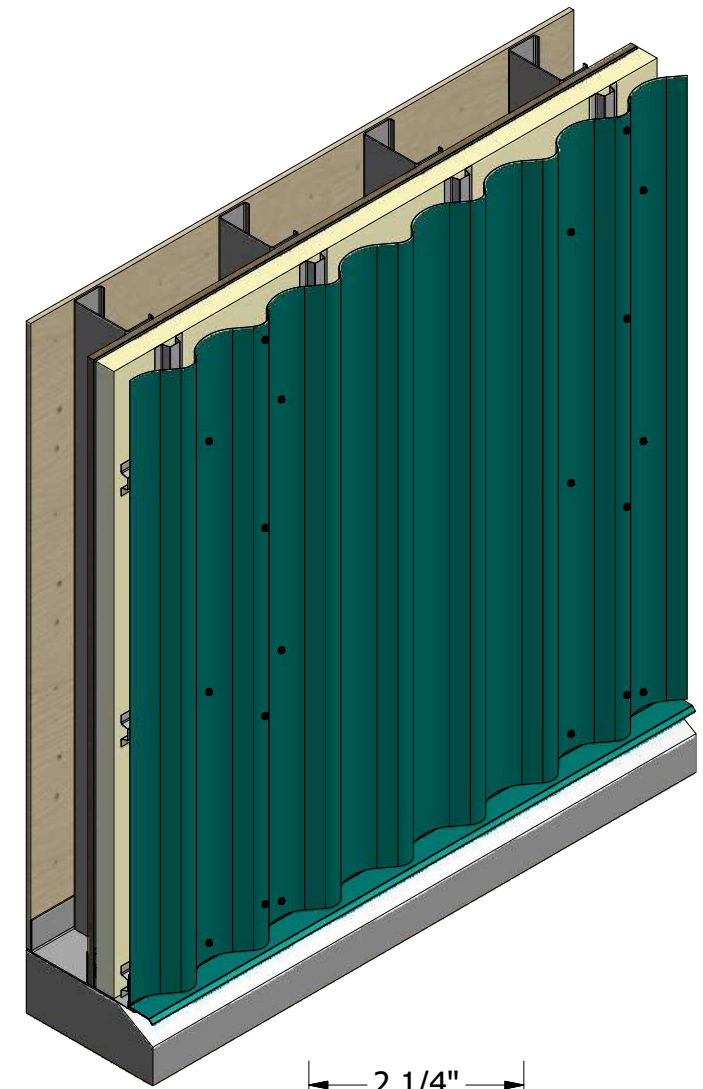
TITLE		Wave Panel Profile Open Detail	
DWG. NO.	DR	DATE	12/30/2016
	DMR	APP	DATE
MATERIAL	SH. SIZE	B	SCALE X:X

REV. NO.	DATE	DESCRIPTION OF REVISION	BY	APP

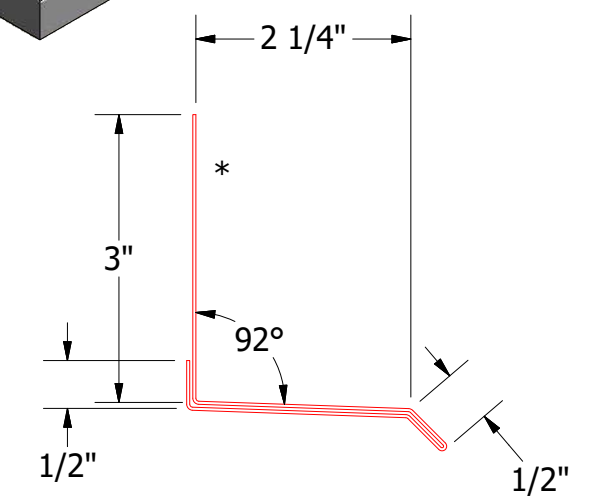
Vertical Panel



- Wave Panel
- Metal Wall Stud
- Interior Finish
- Vertical Subgirt
- Exterior Gypsum Board
- Water and Air Resistive Barrier
- Water Resistant Insulation
- Counterflashing (by others)
- #14 x 7/8" Painted Hex Washer Head Fastener with Washer
- Fastener Flashing (by others)
- Horizontal Subgirt
- Metal Stud
- #10 x 5/8" Wafer Head Fastener
- Flashing by others
- Base Trim



Flashing
(Field Fabricated From Color Matched Flat Stock)



BVA661- Base Trim

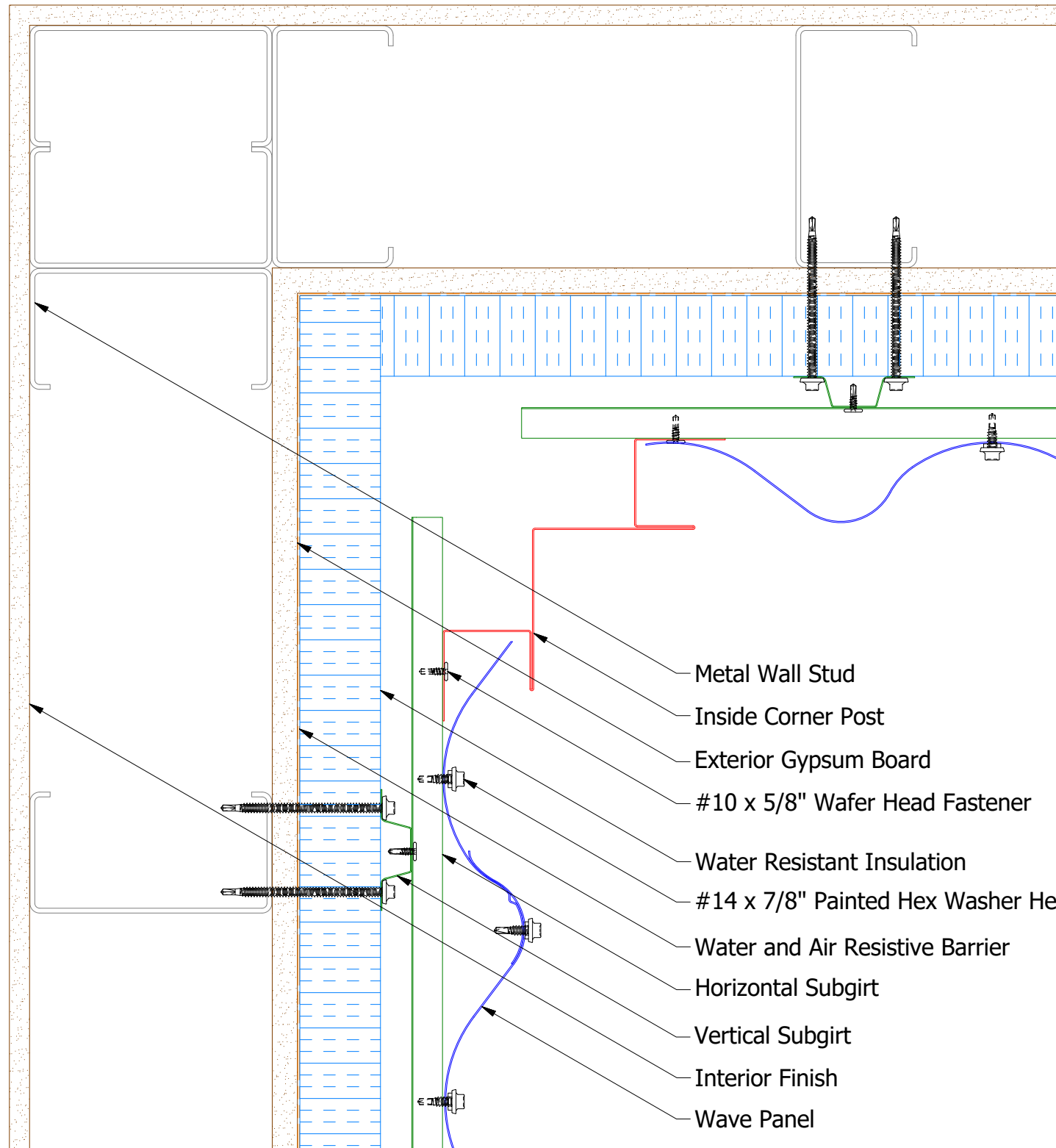
2 Stage Method of Weather Proofing

ATAS ATAS INTERNATIONAL, INC
 Allentown PA
 610-395-8445
 Mesa AZ
 480-558-7210

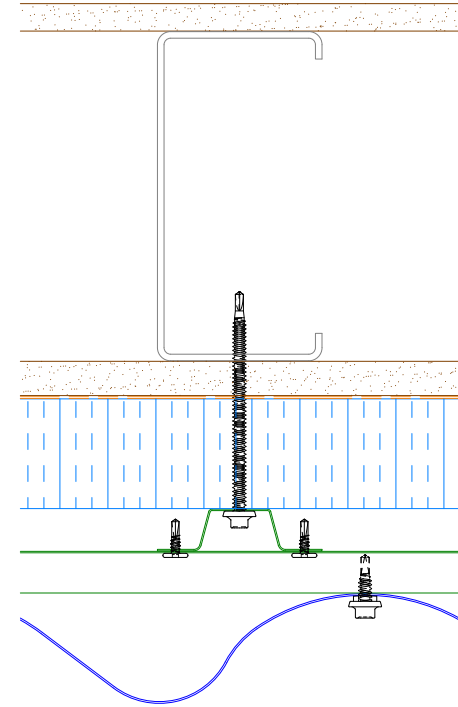
TITLE **Wave Panel Base Detail**

REV. NO.	DATE	DESCRIPTION OF REVISION	BY	APP	DWG. NO.	DR	DATE
						KRK	5/11/2015
					MATERIAL	APP	DATE
					SH. SIZE	B	SCALE
							X:X

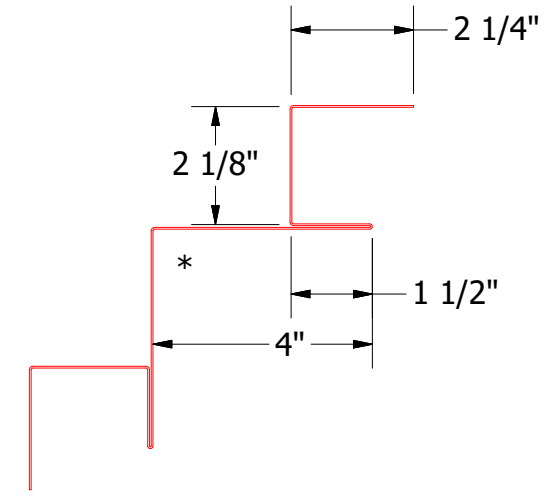
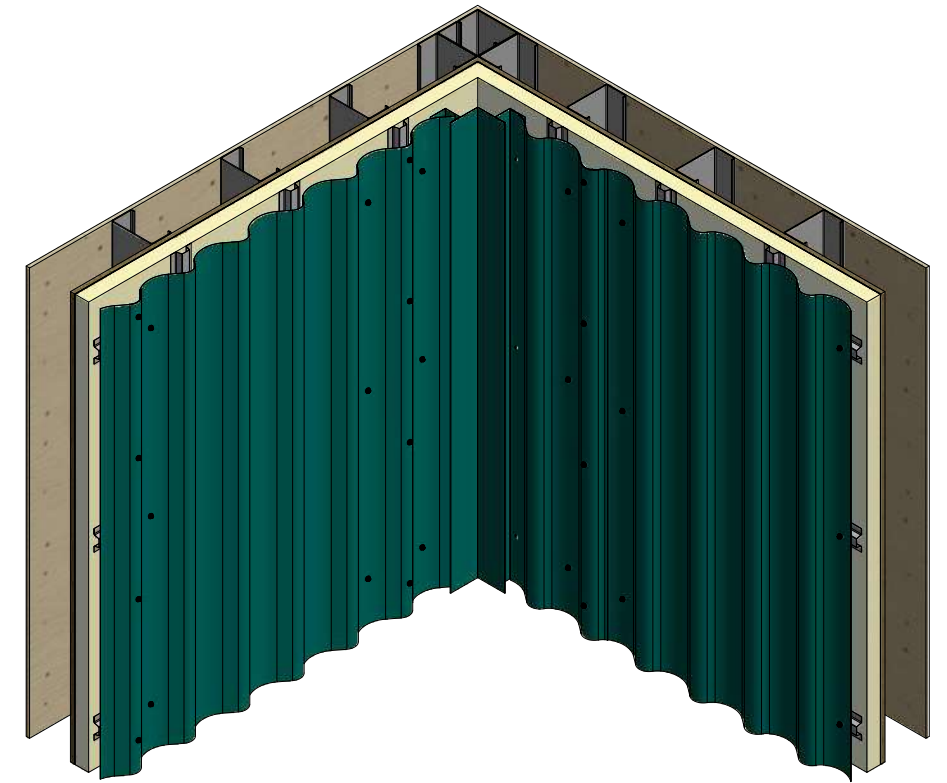
Vertical Panel



- Metal Wall Stud
- Inside Corner Post
- Exterior Gypsum Board
- #10 x 5/8" Wafer Head Fastener
- Water Resistant Insulation
- #14 x 7/8" Painted Hex Washer Head Fastener with Washer
- Water and Air Resistive Barrier
- Horizontal Subgirt
- Vertical Subgirt
- Interior Finish
- Wave Panel



Alternate Subgirt Orientation



BVA601-Inside Corner Post

2 Stage Method of Weather Proofing

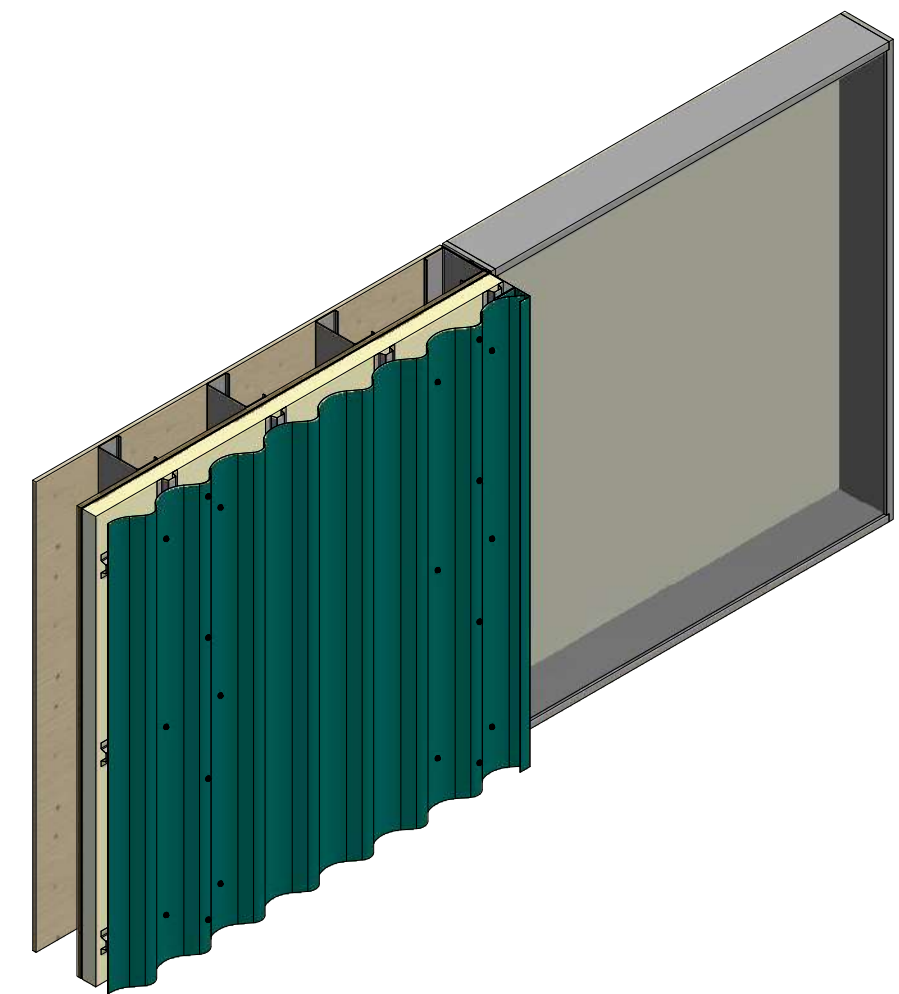
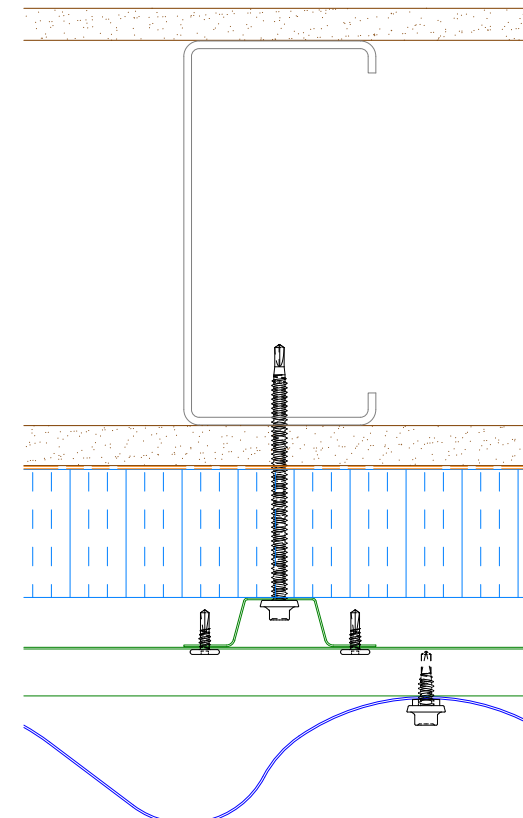
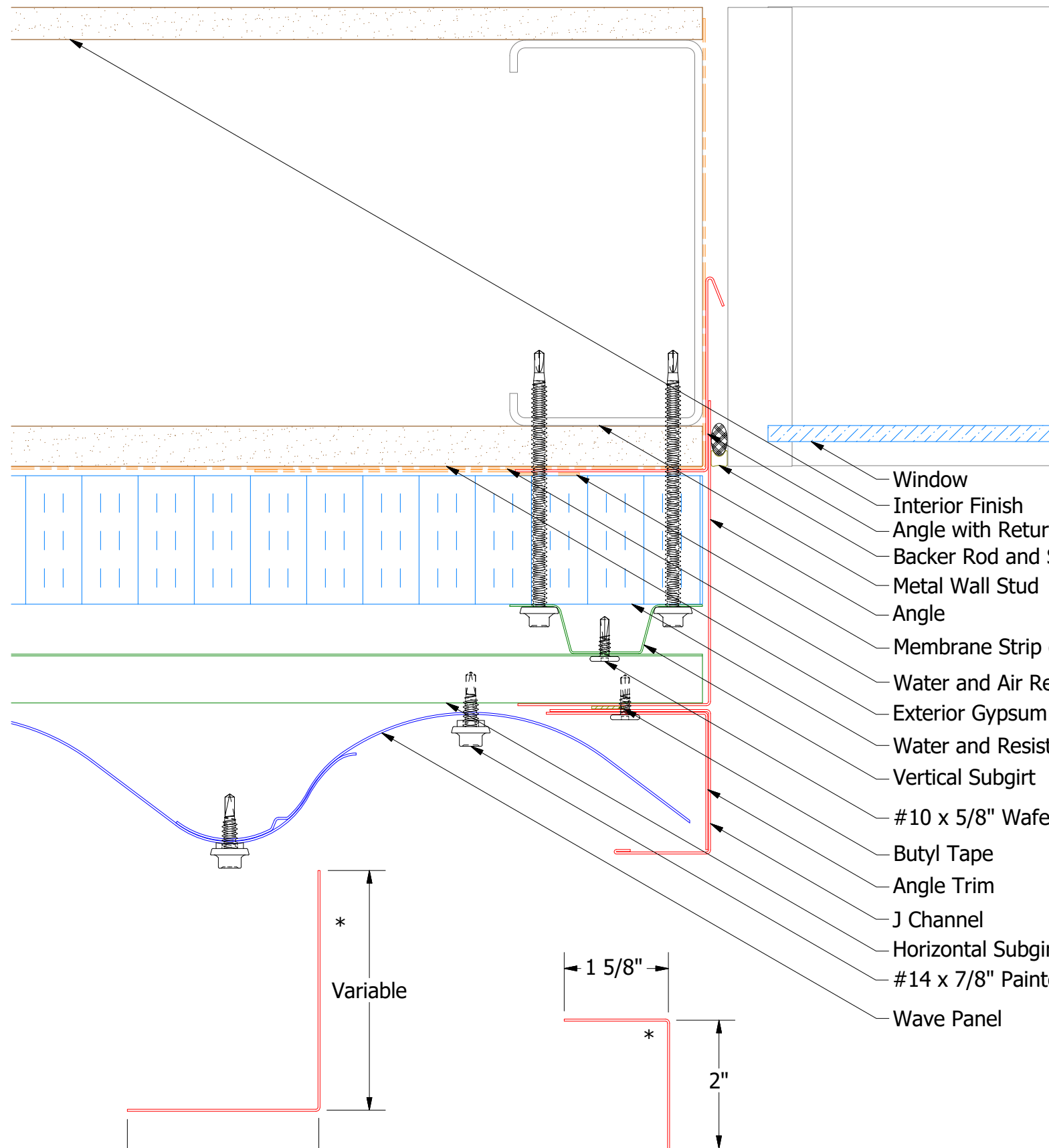


ATAS INTERNATIONAL, INC
 Allentown PA
 610-395-8445
 Mesa AZ
 480-558-7210

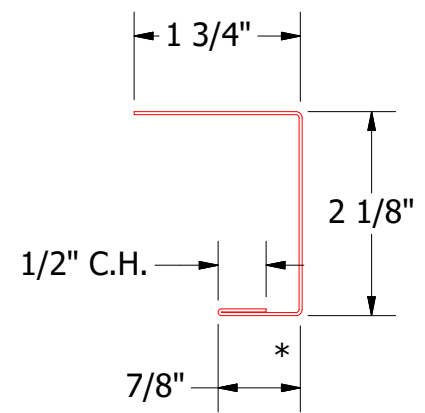
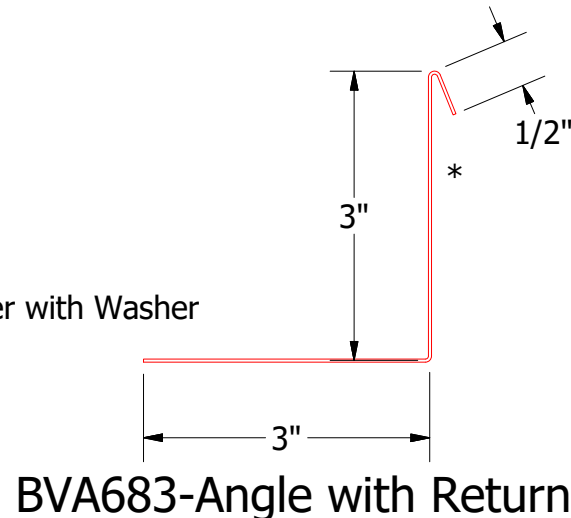
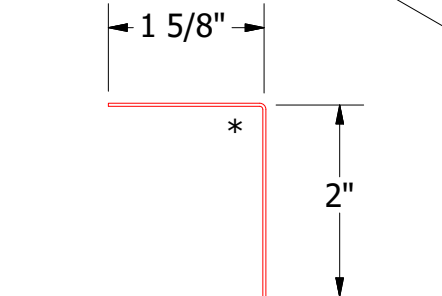
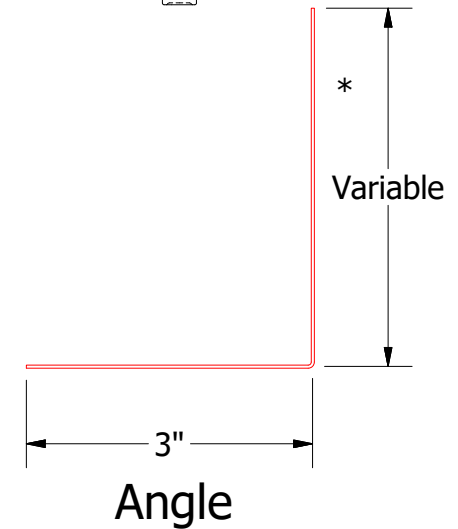
TITLE Wave Panel Inside Corner Detail

REV. NO.	DATE	DESCRIPTION OF REVISION	BY	APP	DWG. NO.	DR	KRK	DATE	5/15/2015
						APP		DATE	
					MATERIAL	SH. SIZE	B	SCALE	X:X

Vertical Panel



- Window
- Interior Finish
- Angle with Return
- Backer Rod and Sealant
- Metal Wall Stud
- Angle
- Membrane Strip over Angle with Return
- Water and Air Resistive Barrier
- Exterior Gypsum Board
- Water and Resistant Insulation
- Vertical Subgirt
- #10 x 5/8" Wafer Head Fastener
- Butyl Tape
- Angle Trim
- J Channel
- Horizontal Subgirt
- #14 x 7/8" Painted Hex Washer Head Fastener with Washer
- Wave Panel

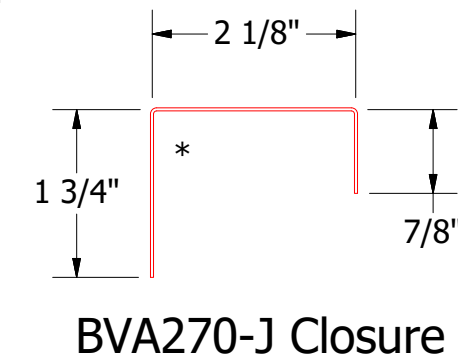
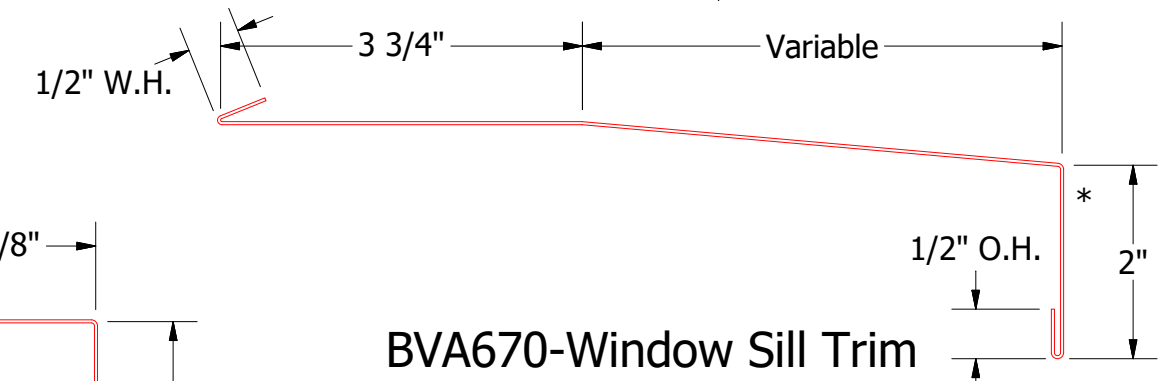
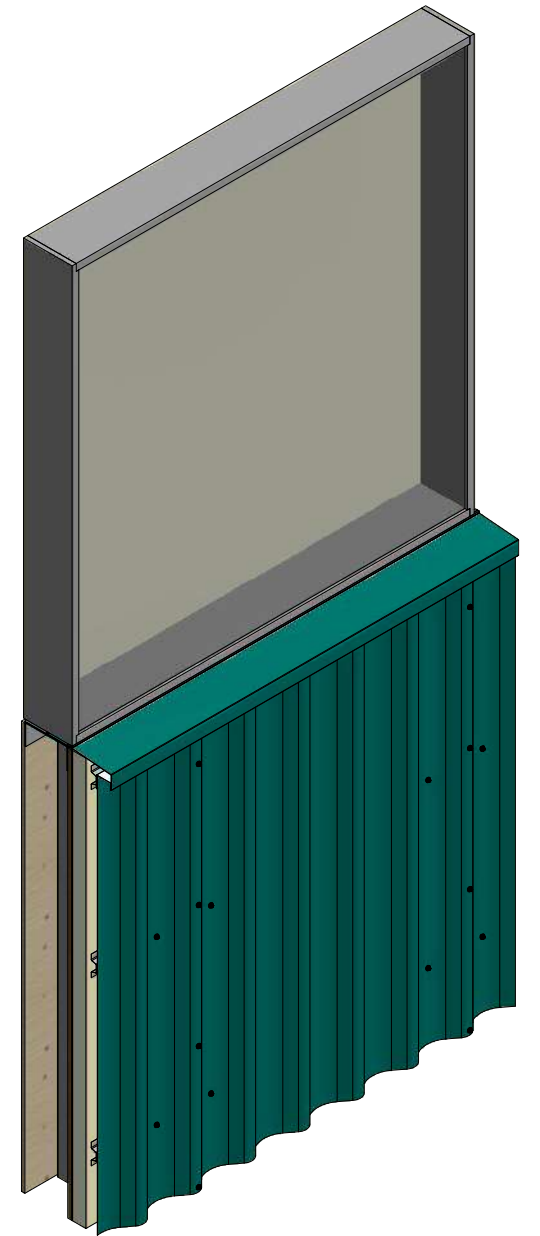
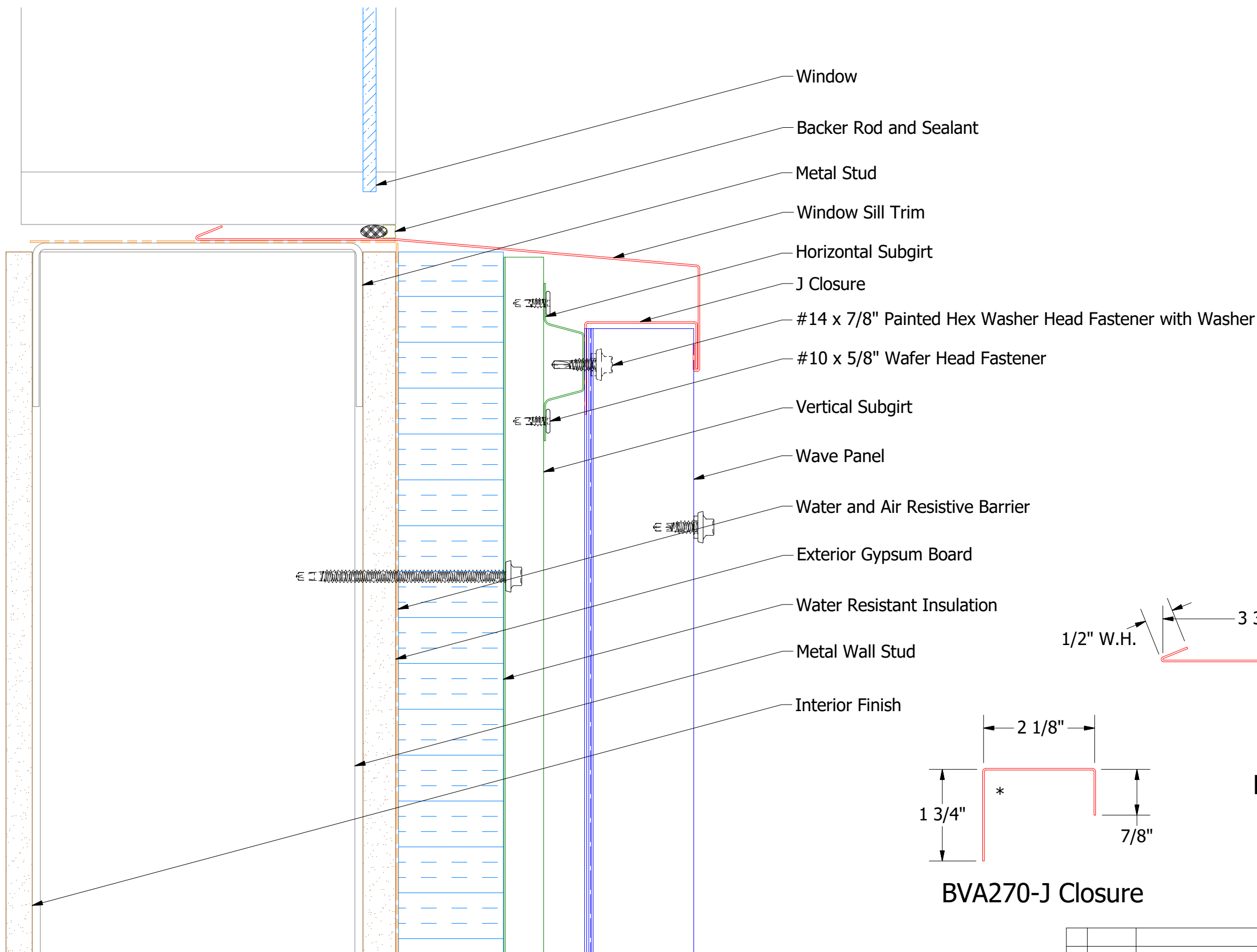


2 Stage Method of Weather Proofing

ATAS INTERNATIONAL, INC
 Allentown PA
 610-395-8445
 Mesa AZ
 480-558-7210

TITLE		Wave Panel Jamb Detail	
DWG. NO.	DR	KRK	DATE 5/15/2015
MATERIAL	APP		DATE
REV. NO.	DATE	DESCRIPTION OF REVISION	BY APP
			SH. SIZE B SCALE X:X

Vertical Panel



BVA670-Window Sill Trim
 2 Stage Method of Weather Proofing

ATAS ATAS INTERNATIONAL, INC
 Allentown PA
 610-395-8445
 Mesa AZ
 480-558-7210

TITLE		Wave Panel Window Sill Detail	
DWG. NO.	DR	DATE	5/18/2015
	KRK	DATE	
MATERIAL	APP	SH. SIZE	B
REV. NO.	DATE	DESCRIPTION OF REVISION	SCALE X:X