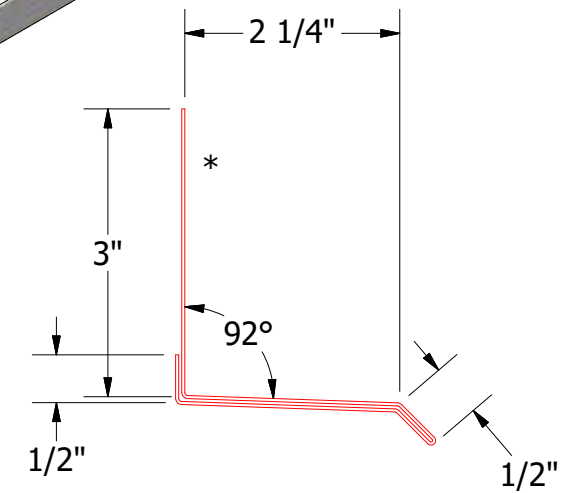
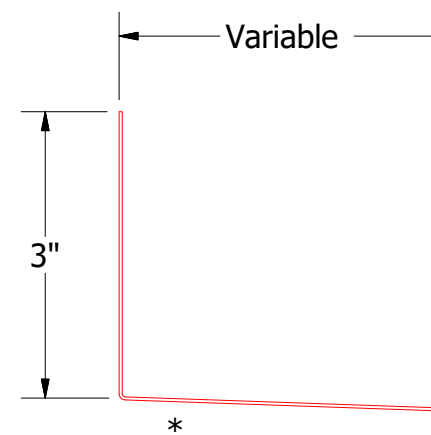
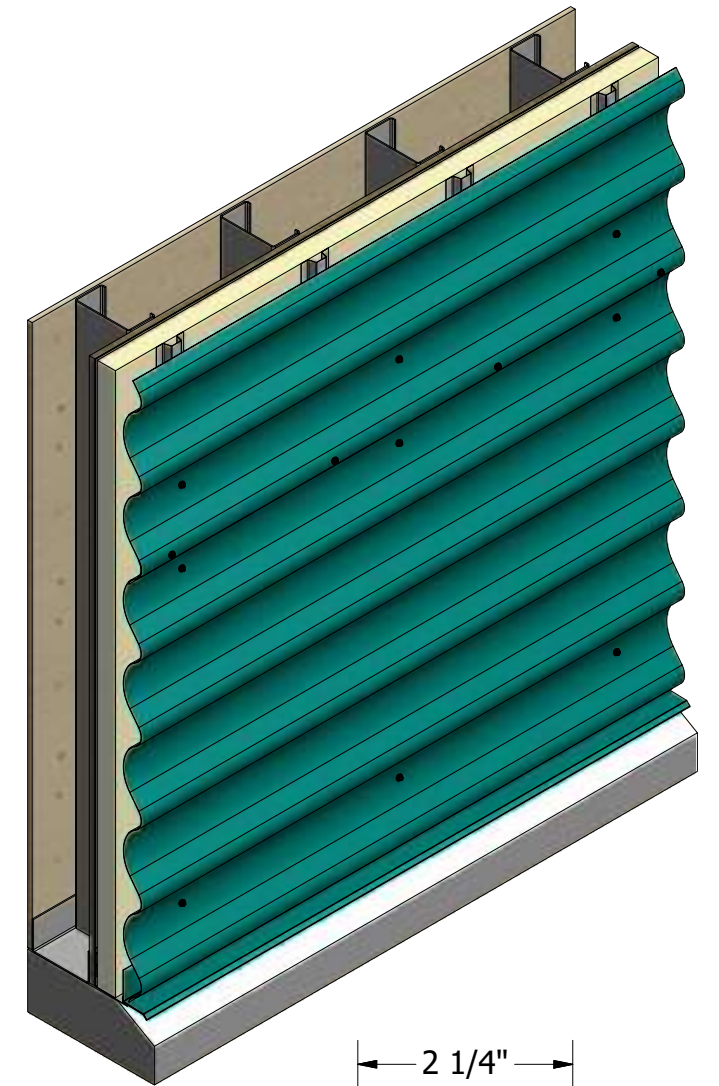
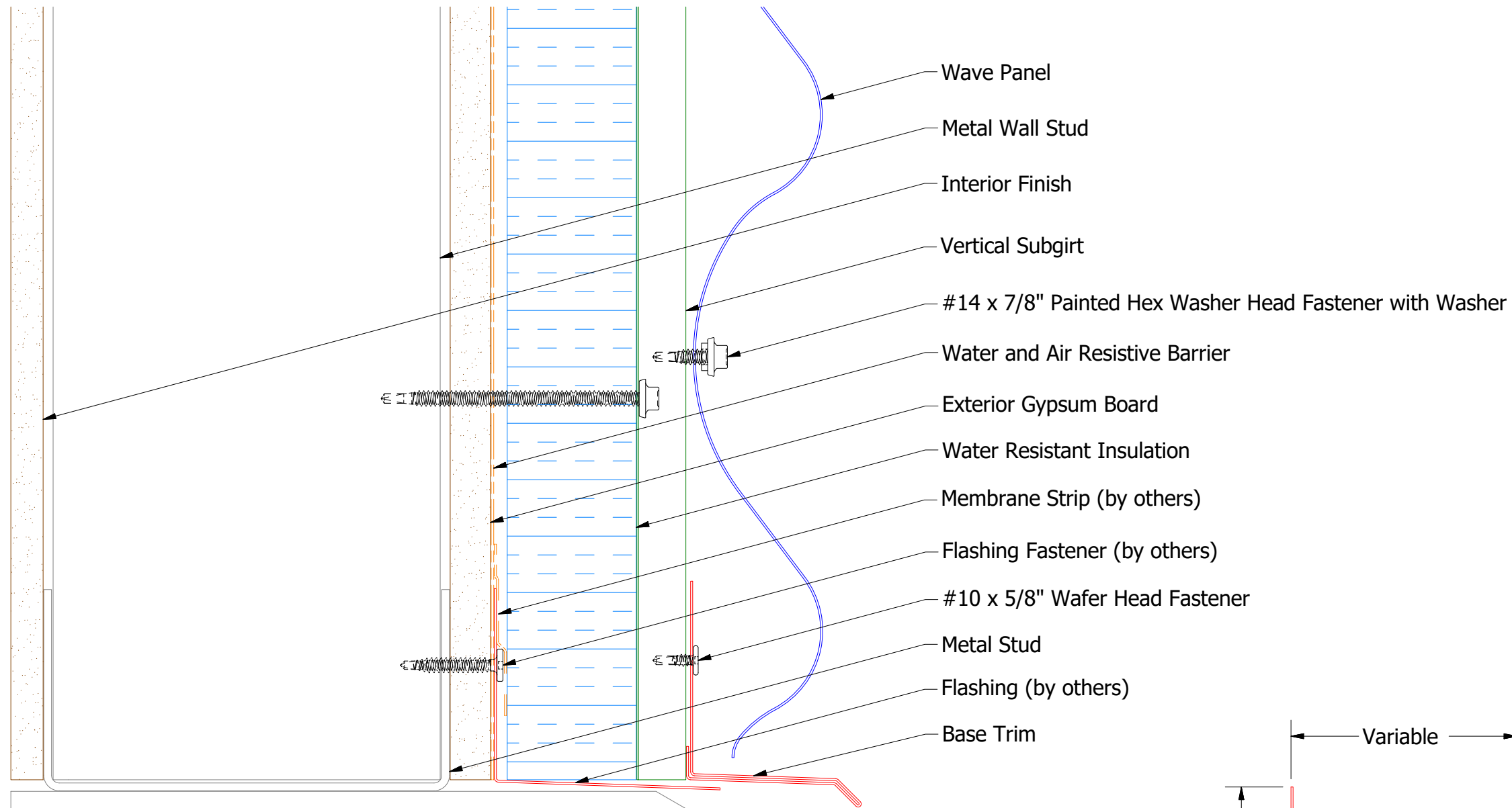


ATAS INTERNATIONAL, INC
 Allentown PA
 610-395-8445
 Mesa AZ
 480-558-7210

TITLE		Wave Panel Profile Open Detail	
DWG. NO.	DR	DATE	12/30/2016
	DMR	DATE	
MATERIAL	APP	DATE	
SH. SIZE	B	SCALE	X:X

REV. NO.	DATE	DESCRIPTION OF REVISION	BY	APP

Horizontal Panel



2 Stage Method of Weather Proofing

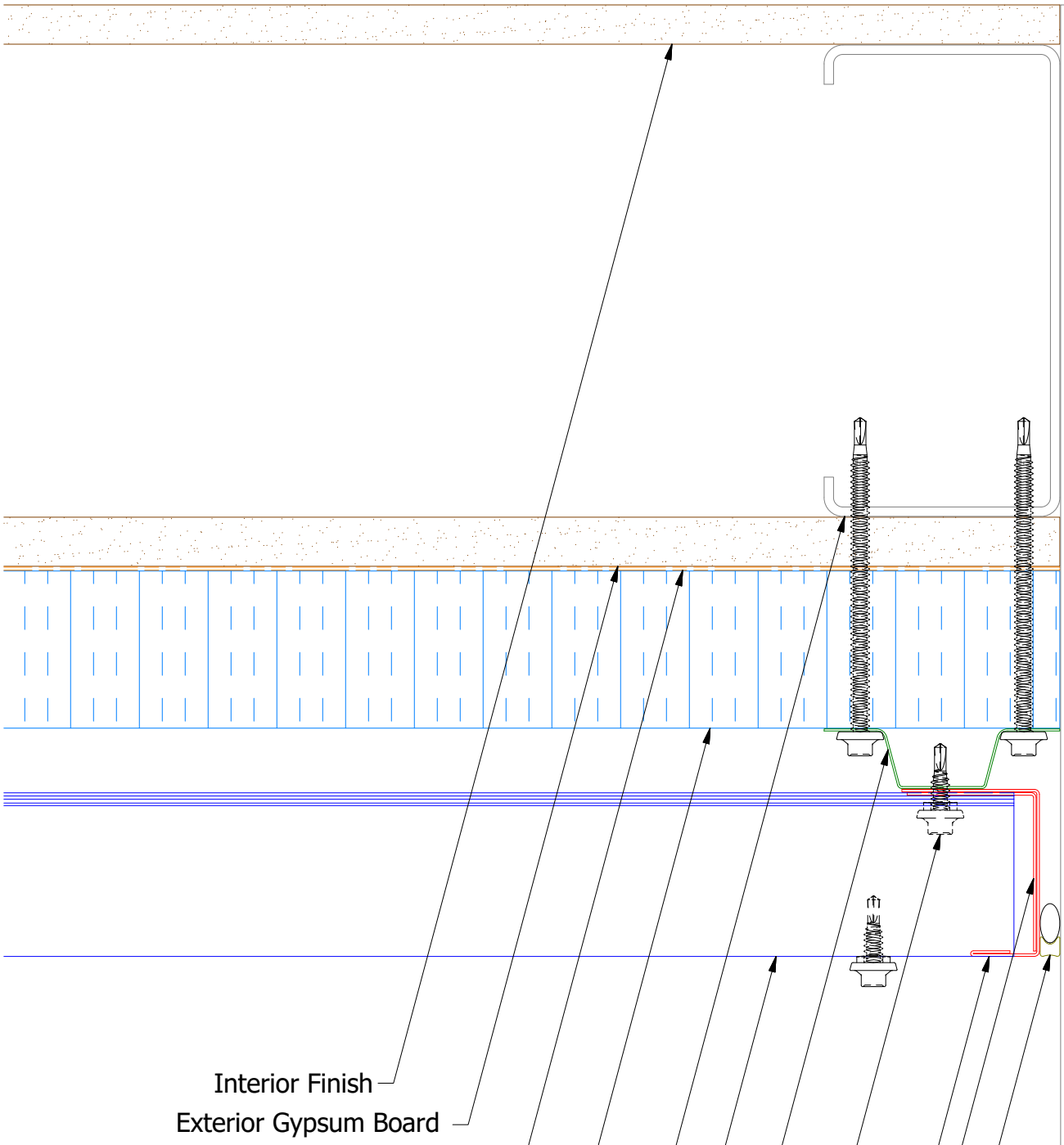


ATAS INTERNATIONAL, INC
 Allentown PA
 610-395-8445
 Mesa AZ
 480-558-7210

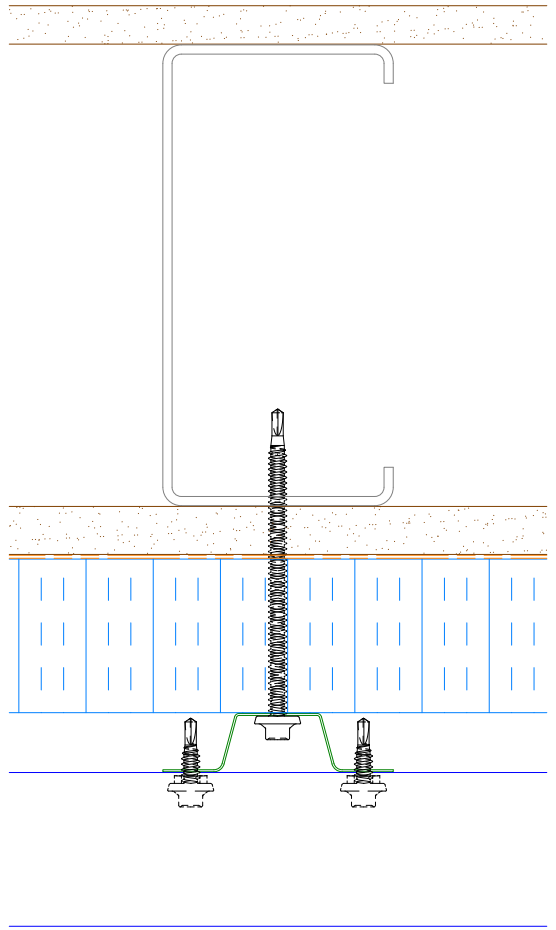
TITLE Wave Panel Base Detail

REV. NO.	DATE	DESCRIPTION OF REVISION	BY	APP	DWG. NO.	DR	KRK	DATE	5/11/2015
						APP		DATE	
					MATERIAL	SH. SIZE	B	SCALE	X:X

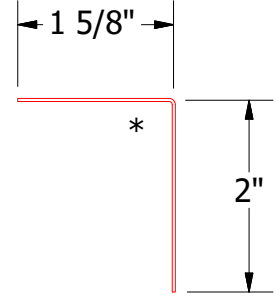
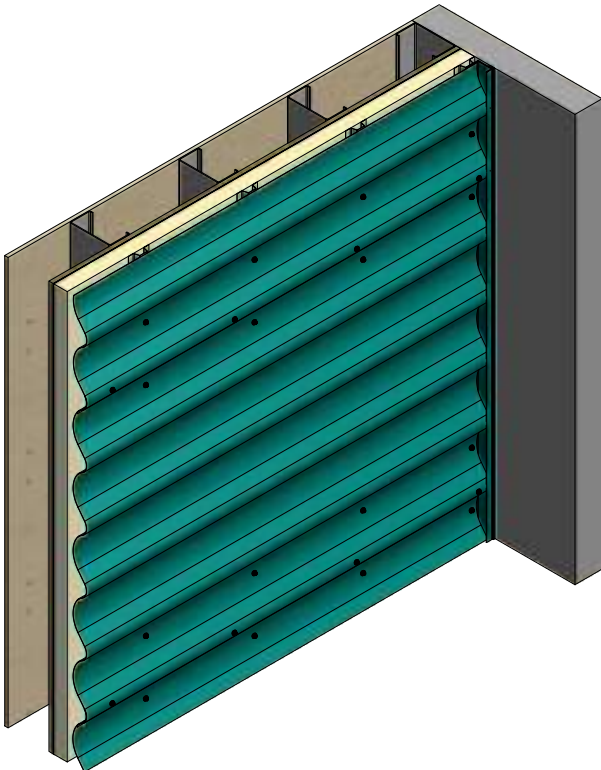
Horizontal Panel



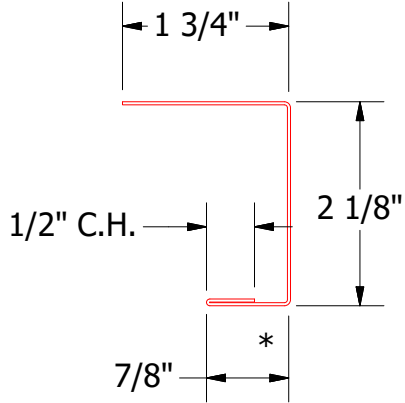
- Interior Finish
- Exterior Gypsum Board
- Water and Air Resistive Barrier
- Water Resistant Insulation
- Metal Wall Stud
- Wave Panel
- Vertical Subgirt
- J Channel
- Angle Trim
- Backer Rod and Sealant
- #14 x 7/8" Painted Hex Washer Head Fastener with Washer



Alternate Subgirt Orientation (NTS)



BVA680- Angle Trim



BVA218- J Channel

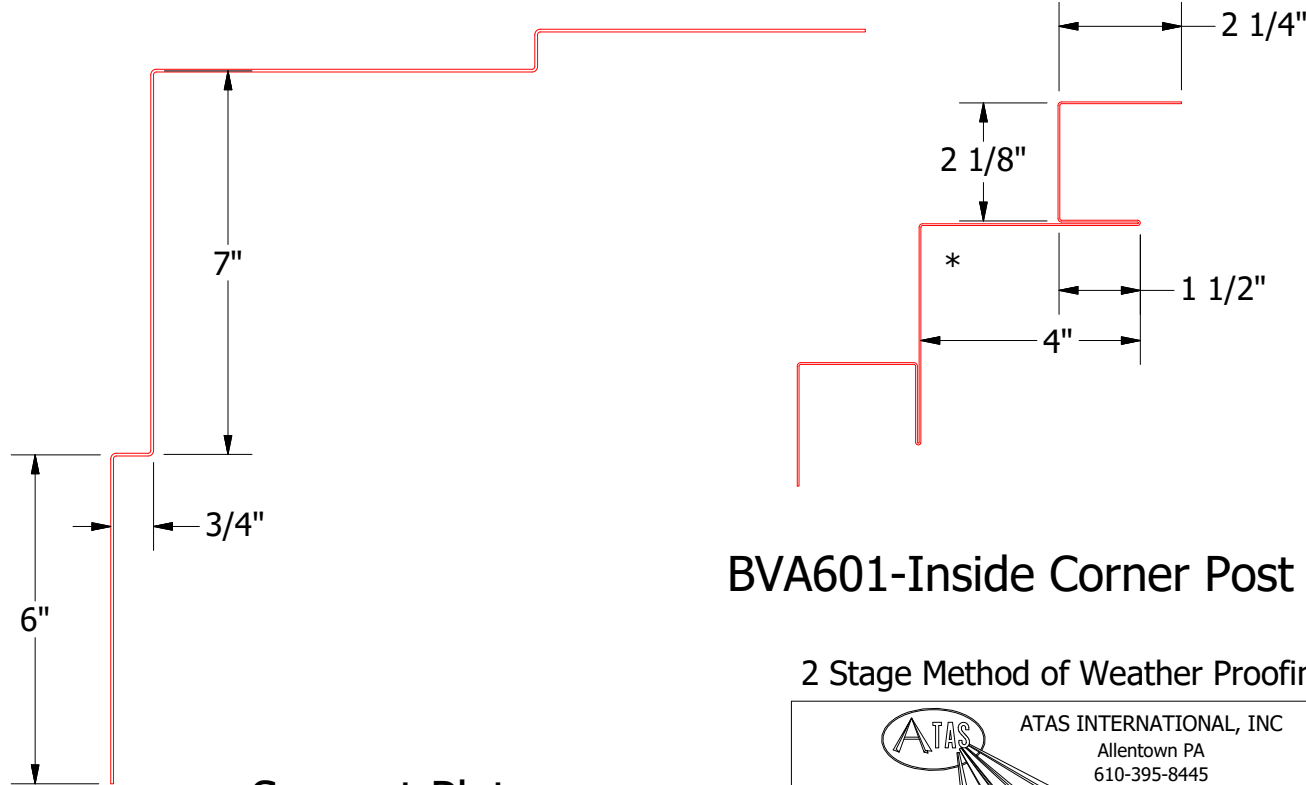
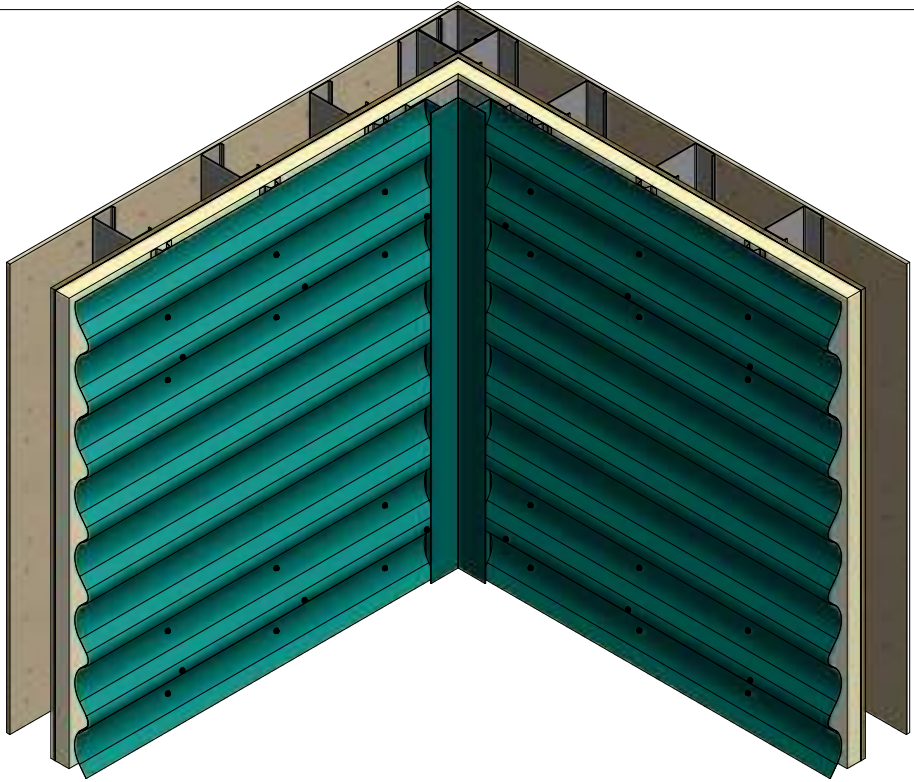
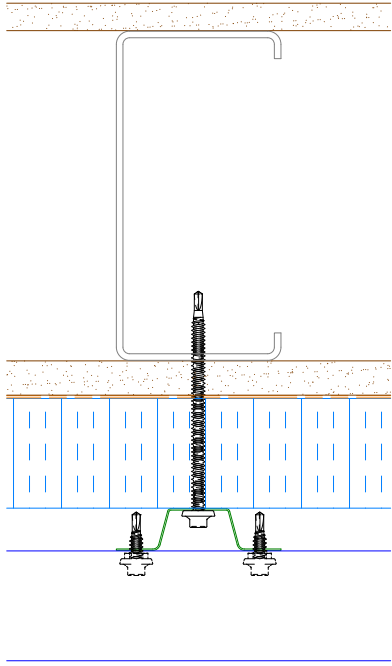
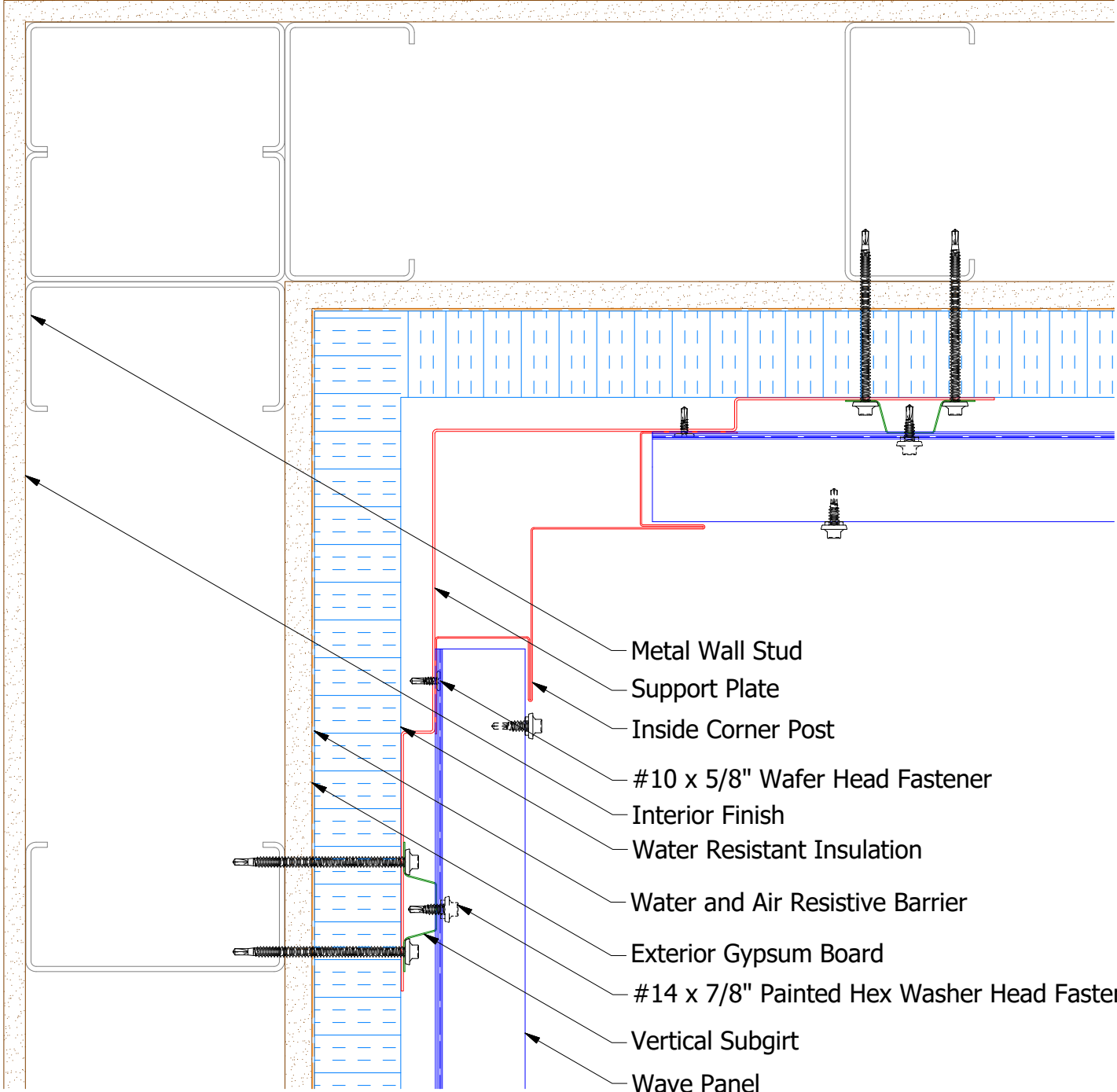
2 Stage Method of Weather Proofing

ATAS ATAS INTERNATIONAL, INC
 Allentown PA
 610-395-8445
 Mesa AZ
 480-558-7210

TITLE		Wave Panel Endwall Detail	
DWG. NO.	DR	DATE	5/13/2015
	KRK		
MATERIAL	APP	DATE	
SH. SIZE	B	SCALE	X:X

REV. NO.	DATE	DESCRIPTION OF REVISION	BY	APP

Horizontal Panel



NOTE: Optional 18 GA. Plate for Outside Corner Post is Available

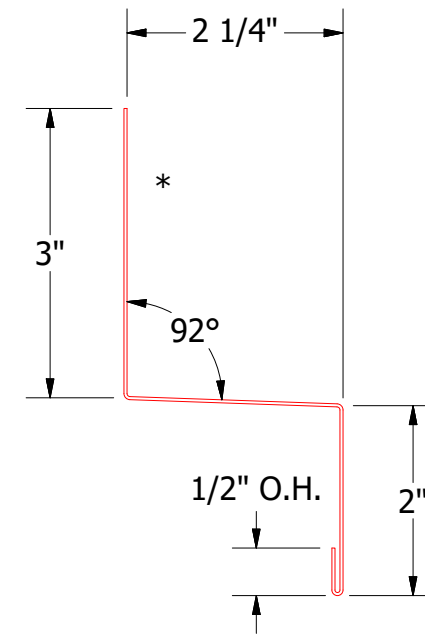
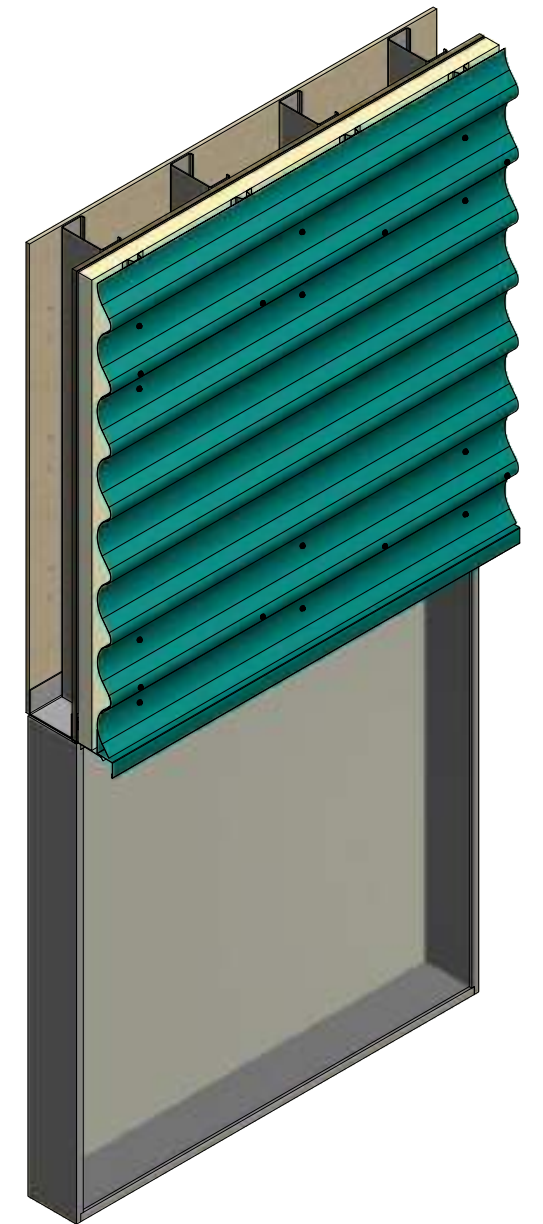
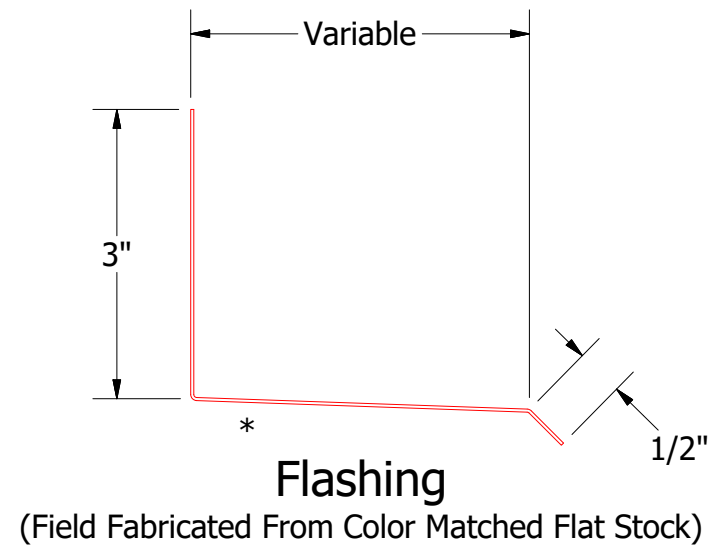
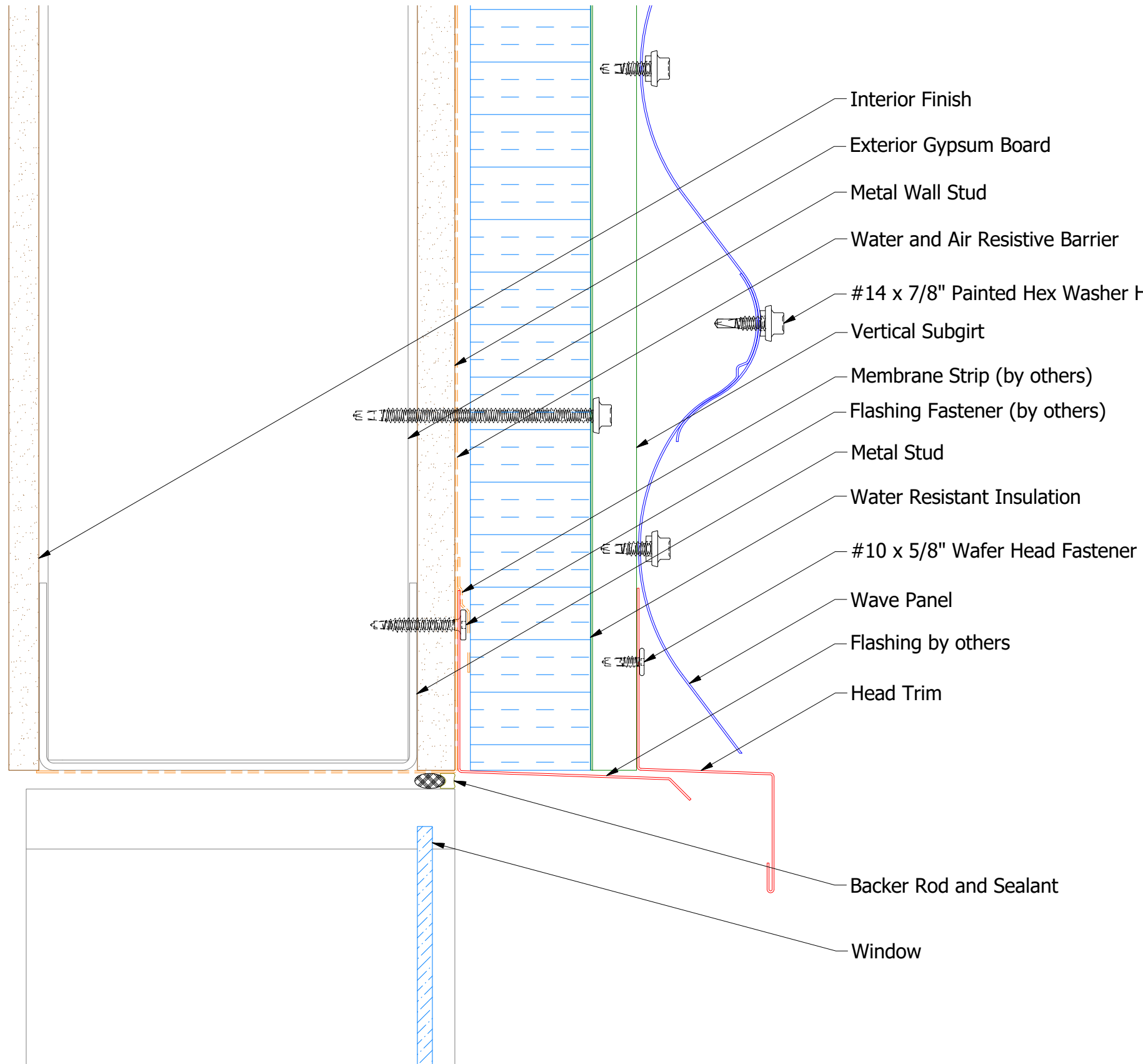
Support Plate

REV. NO.	DATE	DESCRIPTION OF REVISION	BY	APP

2 Stage Method of Weather Proofing

		ATAS INTERNATIONAL, INC Allentown PA 610-395-8445 Mesa AZ 480-558-7210	
TITLE Wave Panel Inside Corner Detail			
DWG. NO. APP	DR KRK	DATE 5/15/2015	DATE DATE
MATERIAL SH. SIZE	B	SCALE X:X	X:X

Horizontal Panel



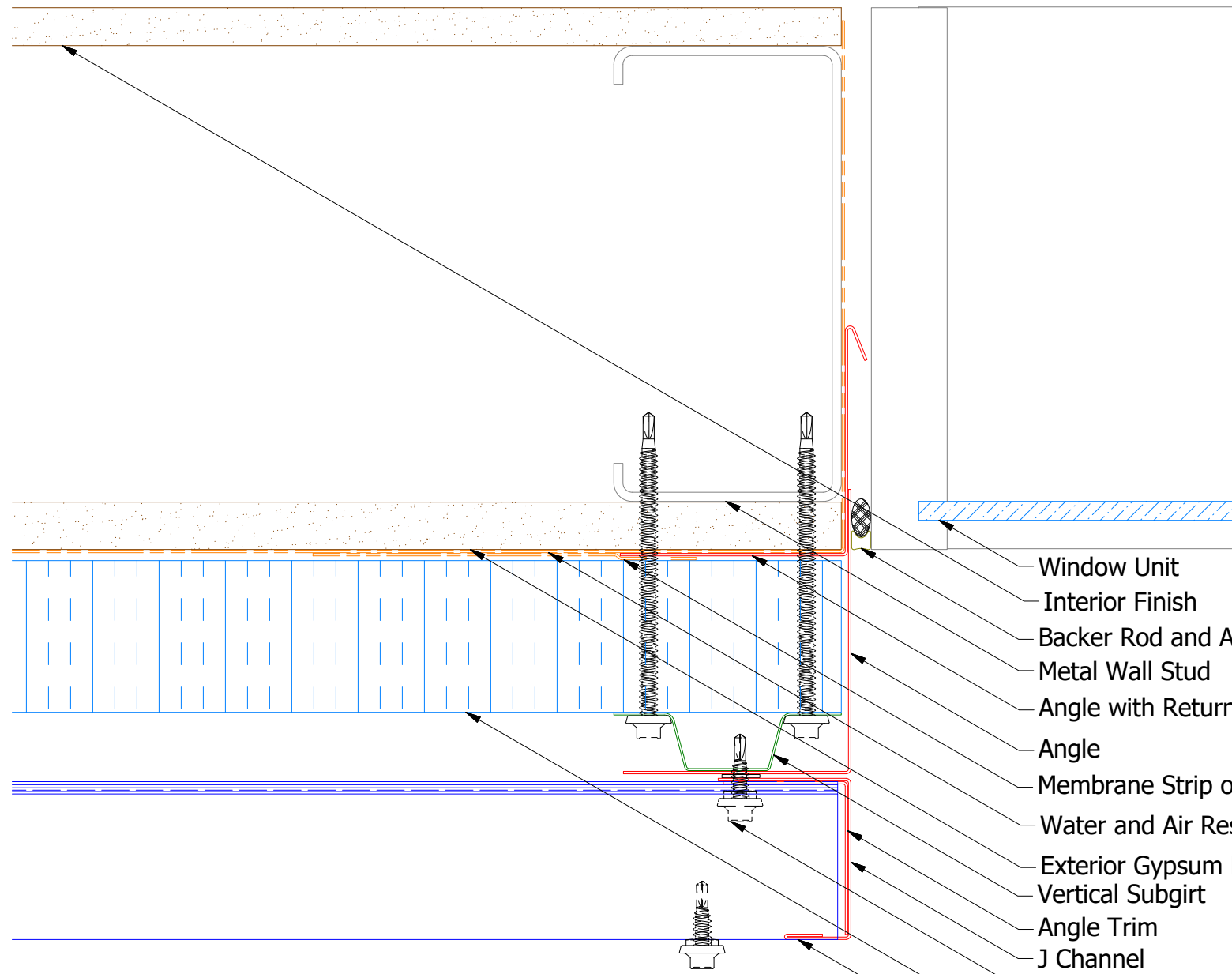
2 Stage Method of Weather Proofing

ATAS ATAS INTERNATIONAL, INC
Allentown PA
610-395-8445
Mesa AZ
480-558-7210

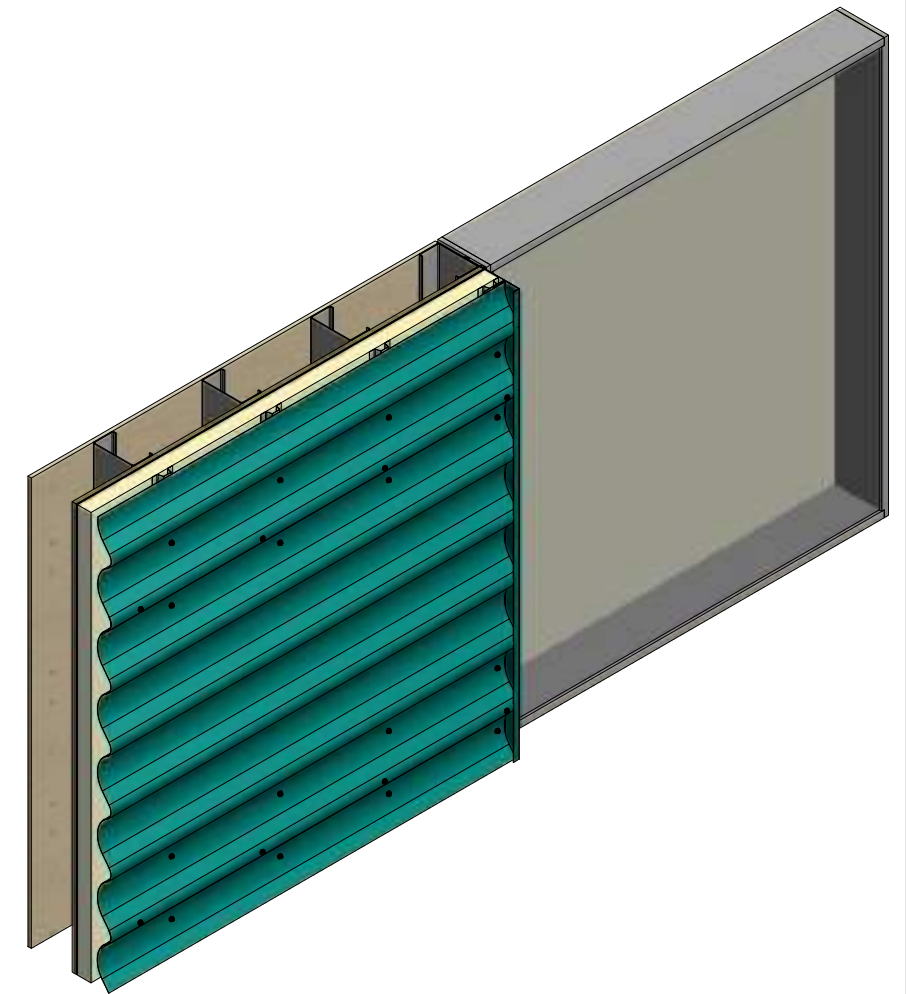
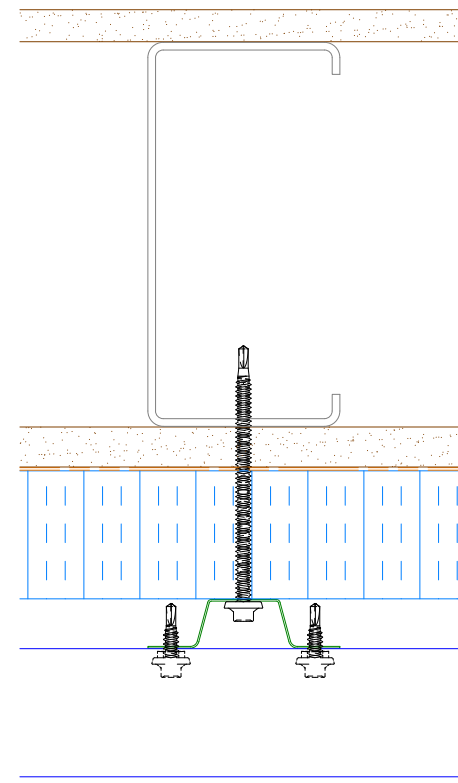
TITLE **Wave Panel Head Detail**

REV. NO.	DATE	DESCRIPTION OF REVISION	BY	APP	DWG. NO.	DR	DATE
						KRK	5/14/2015
					MATERIAL	APP	DATE
					SH. SIZE	B	SCALE X:X

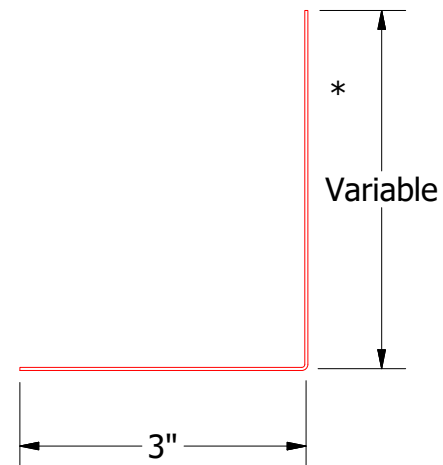
Horizontal Panel



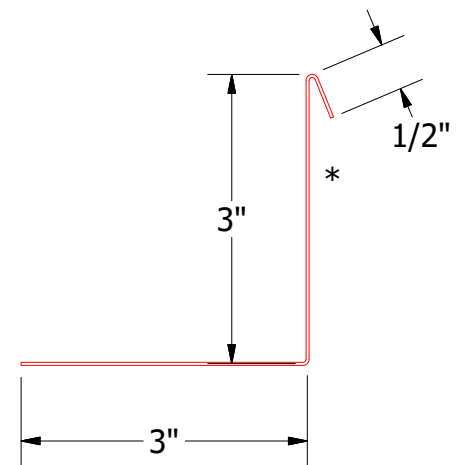
Alternate Subgirt Orientation (NTS)



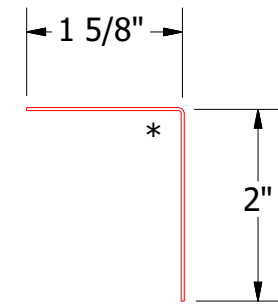
- Window Unit
- Interior Finish
- Backer Rod and Appropriate Sealant
- Metal Wall Stud
- Angle with Return
- Angle
- Membrane Strip over Angle Trim
- Water and Air Resistive Barrier
- Exterior Gypsum Board
- Vertical Subgirt
- Angle Trim
- J Channel
- #14 x 7/8" Painted Hex Washer Head Fastener with Washer
- Water Resistant Insulation
- Wave Panel



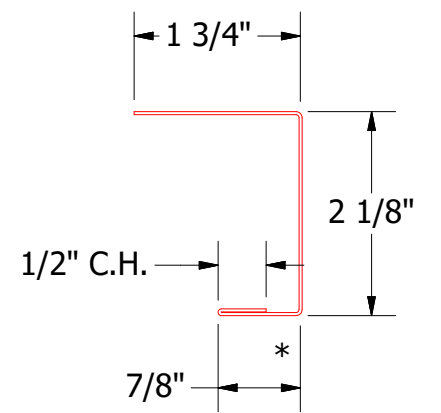
Angle Trim



BVA683-Angle with Return



BVA680-Angle Trim



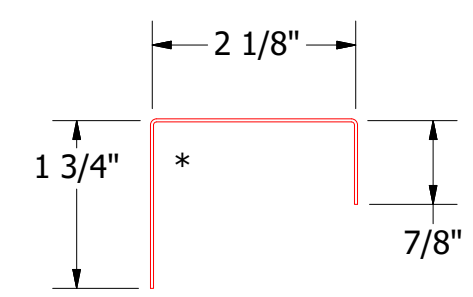
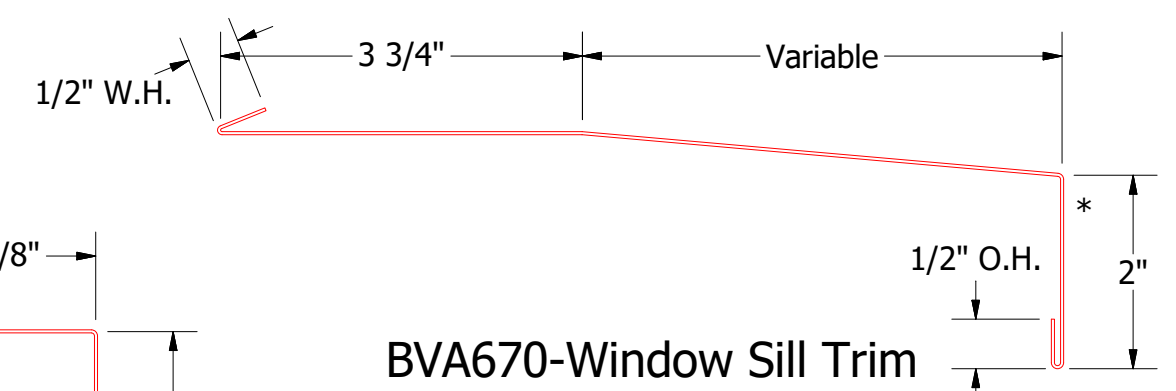
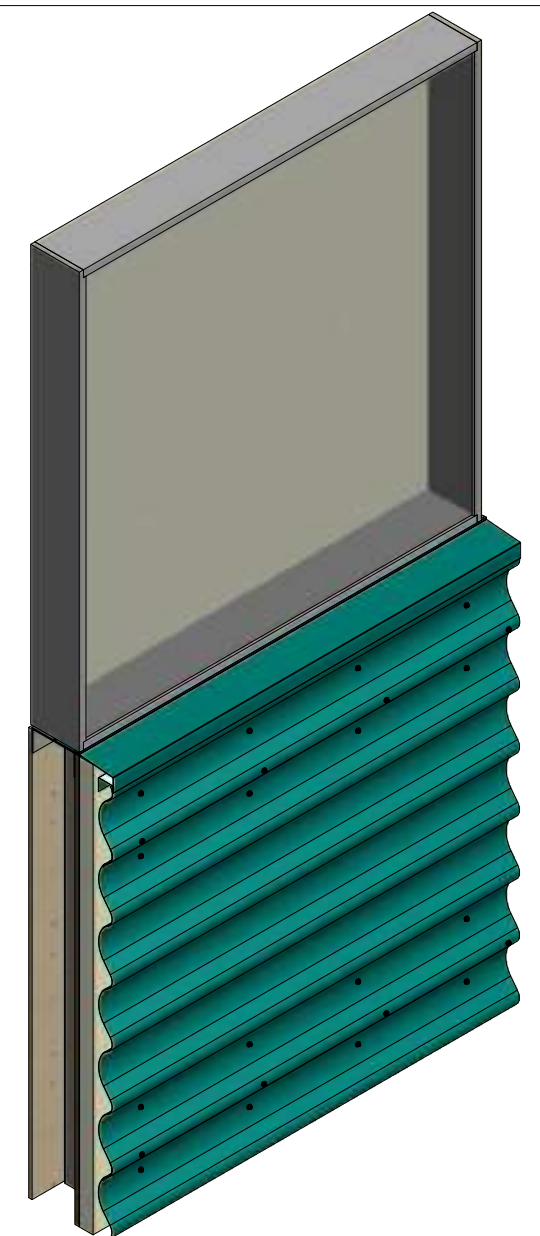
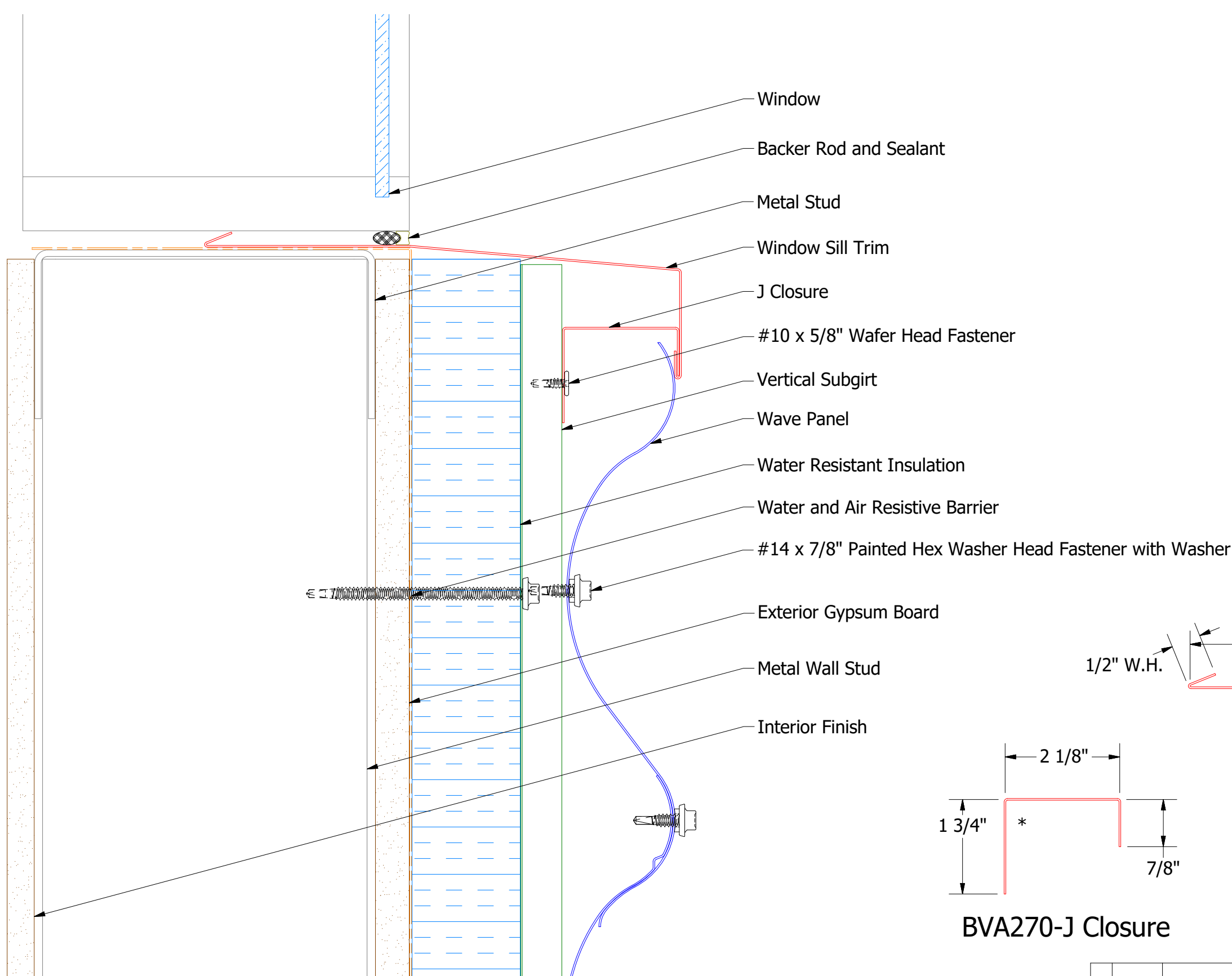
BVA218-J Channel

2 Stage Method of Weather Proofing

ATAS ATAS INTERNATIONAL, INC
 Allentown PA
 610-395-8445
 Mesa AZ
 480-558-7210

TITLE				Wave Panel Jamb Detail	
REV. NO.	DATE	DESCRIPTION OF REVISION	BY	APP	
DWG. NO.			DR	KRK	DATE 5/15/2015
MATERIAL			APP		DATE
			SH. SIZE	B	SCALE X:X

Horizontal Panel



BVA670-Window Sill Trim
2 Stage Method of Weather Proofing

ATAS ATAS INTERNATIONAL, INC
Allentown PA
610-395-8445
Mesa AZ
480-558-7210

TITLE				Wave Panel Window Sill Detail	
DWG. NO.		DR		DATE	
		KRK		5/18/2015	
MATERIAL		APP		DATE	
		SH. SIZE		SCALE	
		B		X:X	
REV. NO.	DATE	DESCRIPTION OF REVISION	BY	APP	