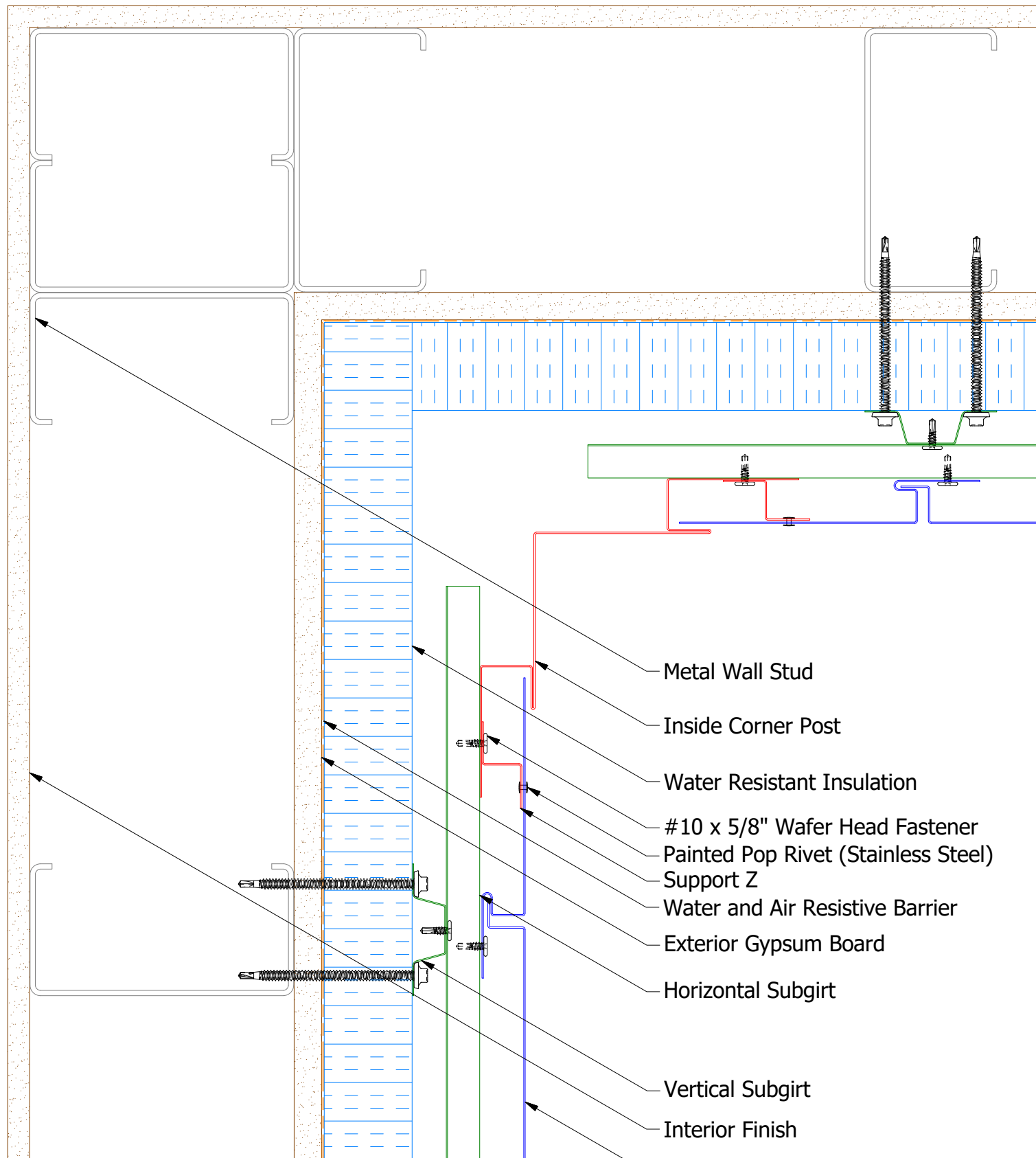
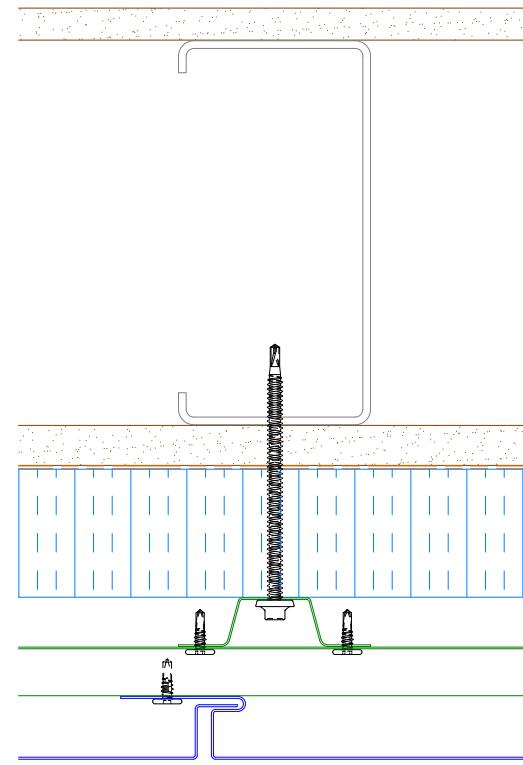


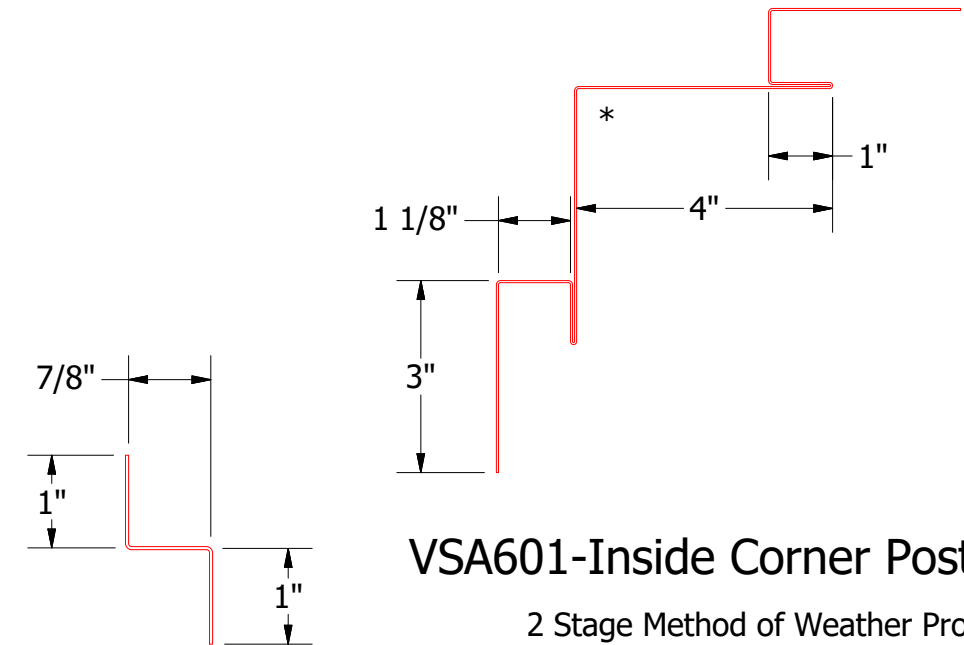
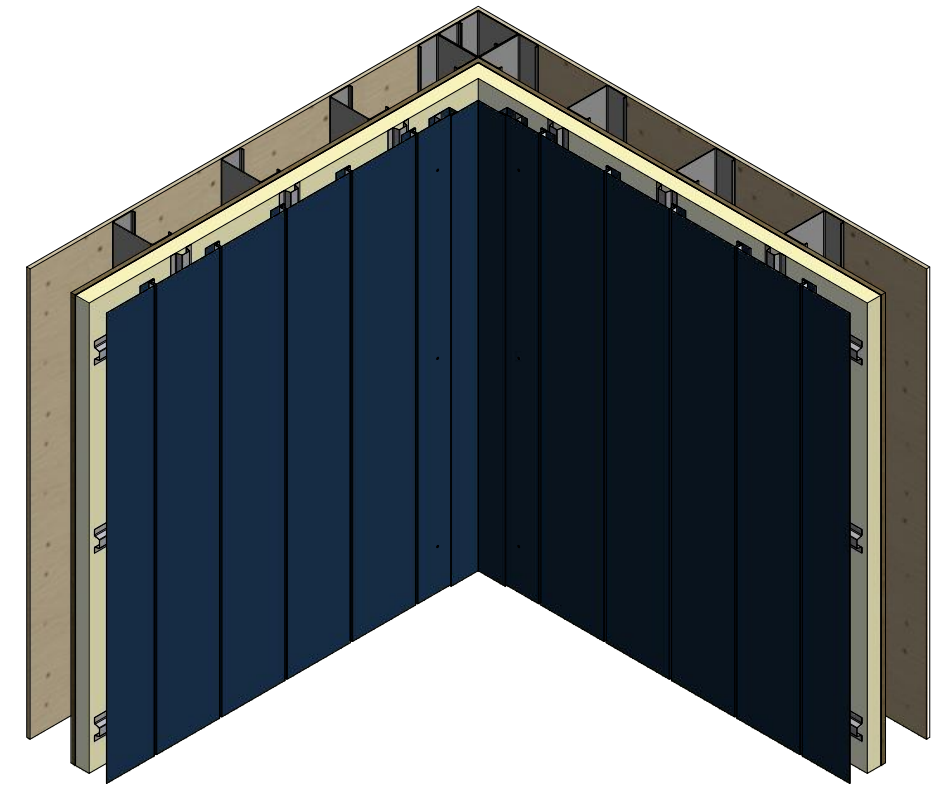
# Vertical Panel



- Metal Wall Stud
- Inside Corner Post
- Water Resistant Insulation
- #10 x 5/8" Wafer Head Fastener
- Painted Pop Rivet (Stainless Steel)
- Support Z
- Water and Air Resistive Barrier
- Exterior Gypsum Board
- Horizontal Subgirt
- Vertical Subgirt
- Interior Finish
- Versa-Seam Panel



Alternate Subgirt Orientation



VSA601-Inside Corner Post

VSA681-Support Z

2 Stage Method of Weather Proofing

**ATAS** ATAS INTERNATIONAL, INC  
 Allentown PA  
 610-395-8445  
 Mesa AZ  
 480-558-7210

TITLE **Versa-Seam Inside Corner Detail**

REV. NO.	DATE	DESCRIPTION OF REVISION	BY	APP	DWG. NO.	DR	KRK	DATE	7/29/2014
						APP		DATE	
					MATERIAL	SH. SIZE	B	SCALE	X:X