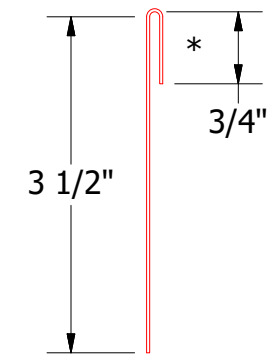
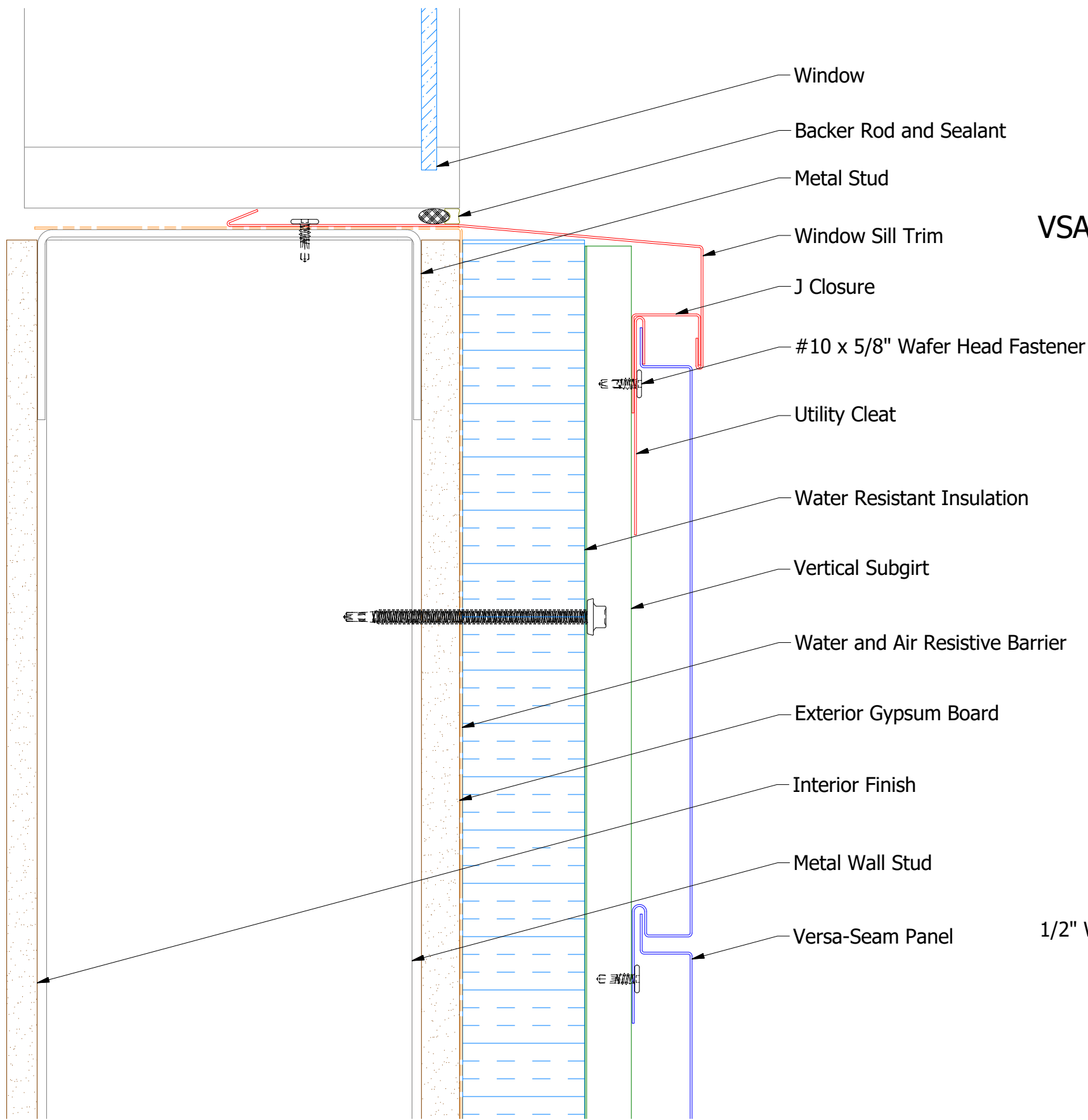
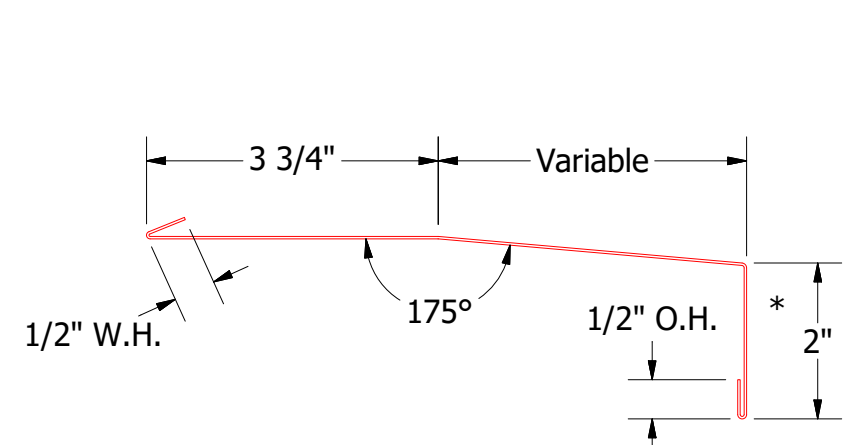
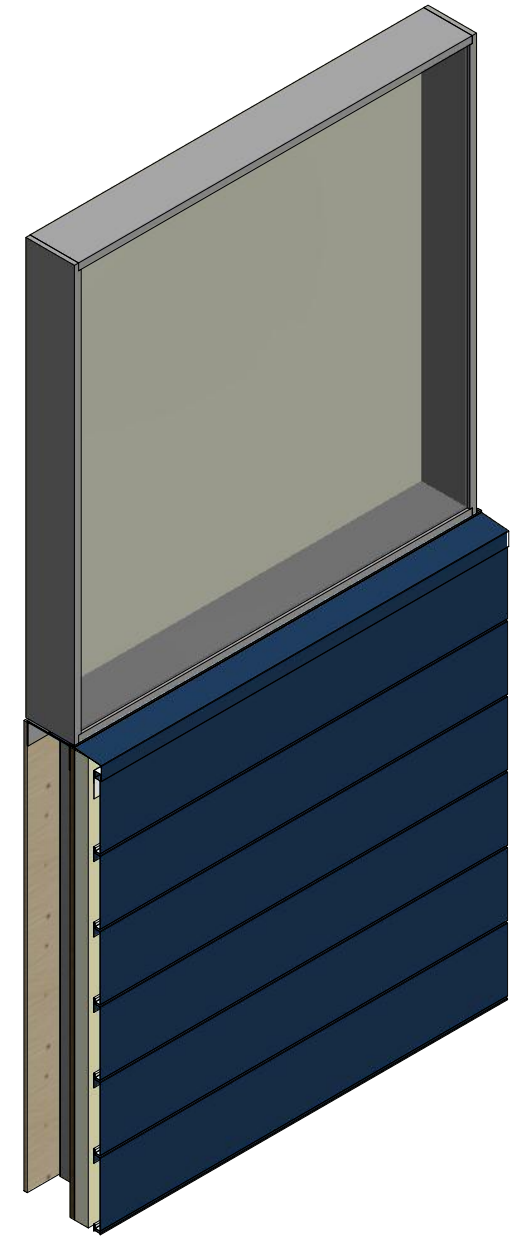


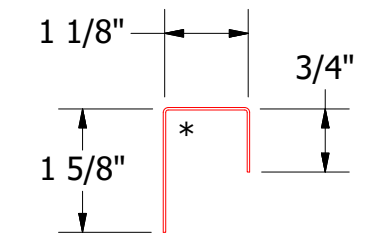
Horizontal Panel



VSA962-Utility Cleat without Return



VSA670-Window Sill Trim



VSA270-J Closure

2 Stage Method of Weather Proofing

ATAS ATAS INTERNATIONAL, INC
 Allentown PA
 610-395-8445
 Mesa AZ
 480-558-7210

TITLE				Versa-Seam Window Sill Detail	
DWG. NO.	DR	DATE	APP	SCALE	DATE
01	KRK	7/30/2014	APP	B	X:X
REV. NO.	DATE	DESCRIPTION OF REVISION	BY	APP	
		Corrected SKU for VSA270-J Closure	KRK		

REV. NO.	DATE	DESCRIPTION OF REVISION	BY	APP
01	10/29/2018	Corrected SKU for VSA270-J Closure	KRK	APP