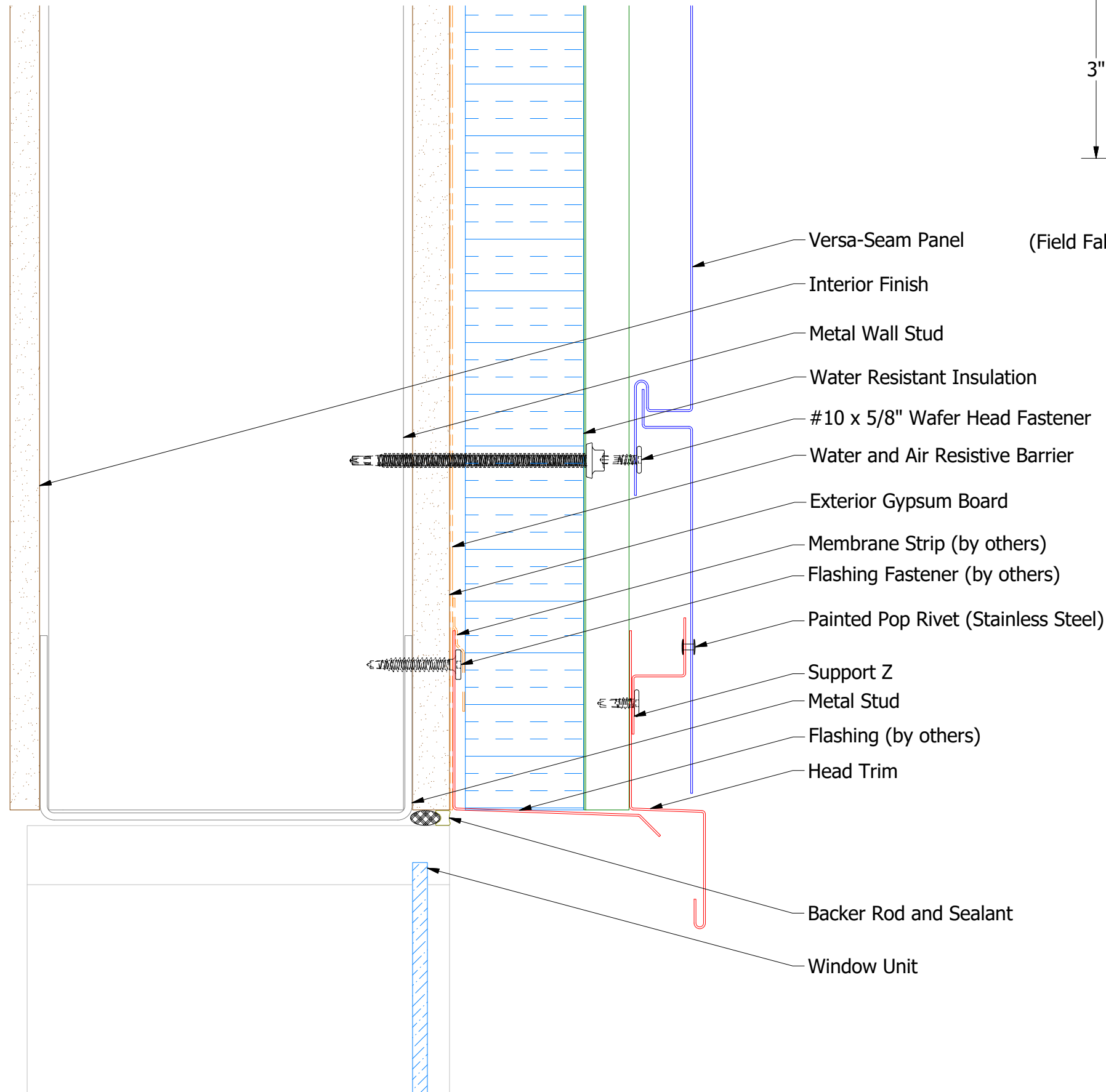
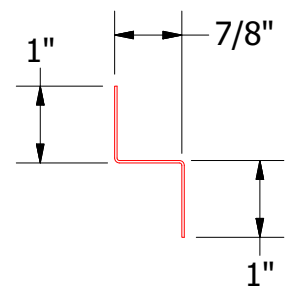
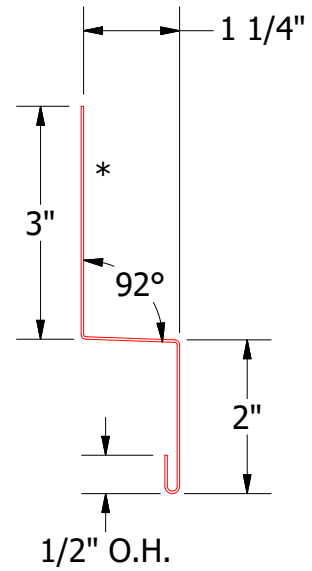
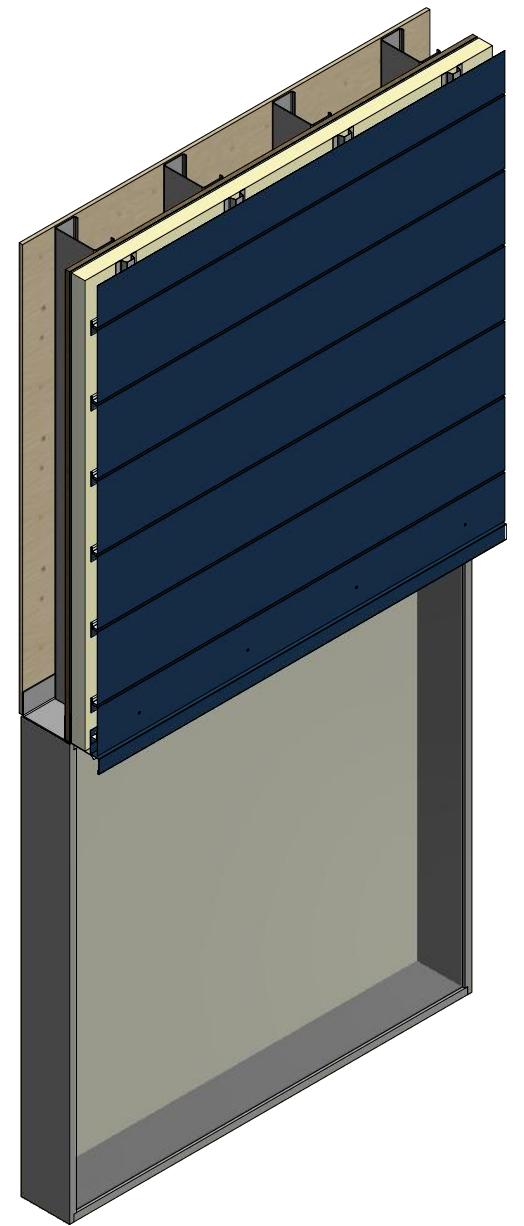
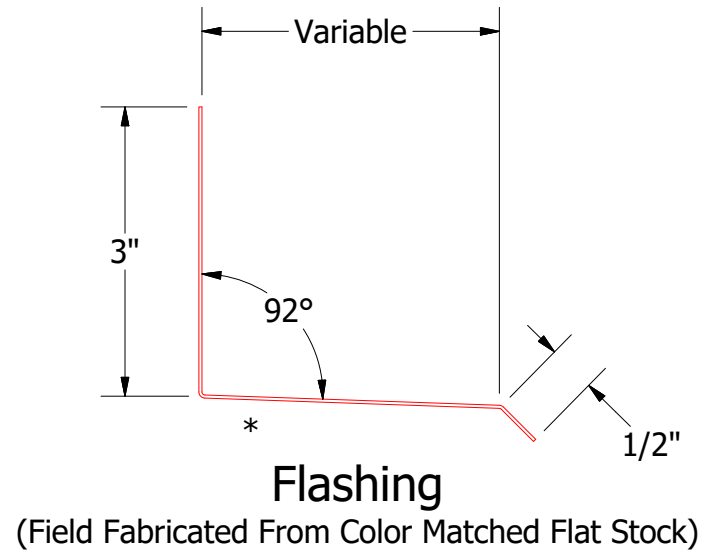


# Horizontal Panel



- Versa-Seam Panel
- Interior Finish
- Metal Wall Stud
- Water Resistant Insulation
- #10 x 5/8" Wafer Head Fastener
- Water and Air Resistive Barrier
- Exterior Gypsum Board
- Membrane Strip (by others)
- Flashing Fastener (by others)
- Painted Pop Rivet (Stainless Steel)
- Support Z
- Metal Stud
- Flashing (by others)
- Head Trim
- Backer Rod and Sealant
- Window Unit



2 Stage Method of Weather Proofing

**ATAS** ATAS INTERNATIONAL, INC  
Allentown PA  
610-395-8445  
Mesa AZ  
480-558-7210

TITLE **Versa-Seam Head Detail**

REV. NO.	DATE	DESCRIPTION OF REVISION	BY	APP	DWG. NO.	DR	DATE
						KRK	7/29/2014
					MATERIAL	APP	DATE
					SH. SIZE	B	SCALE
							X:X