

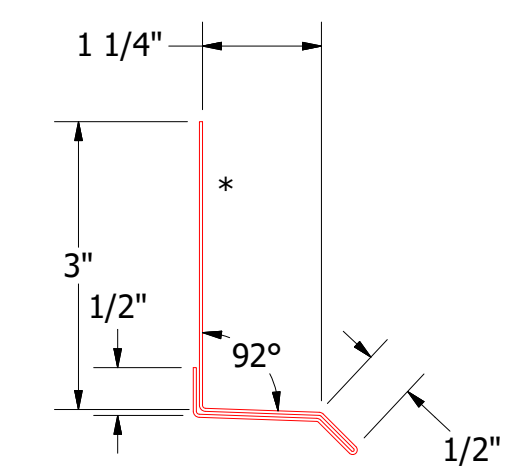
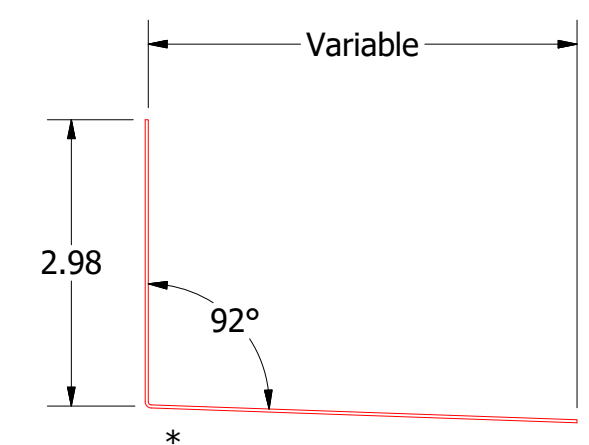
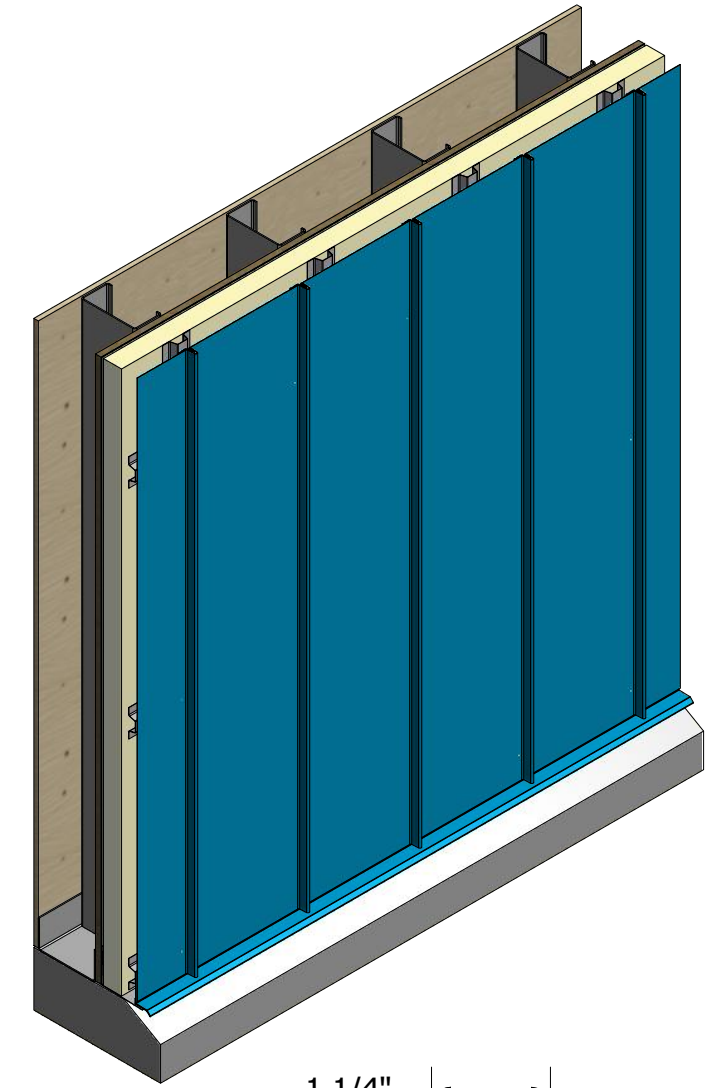
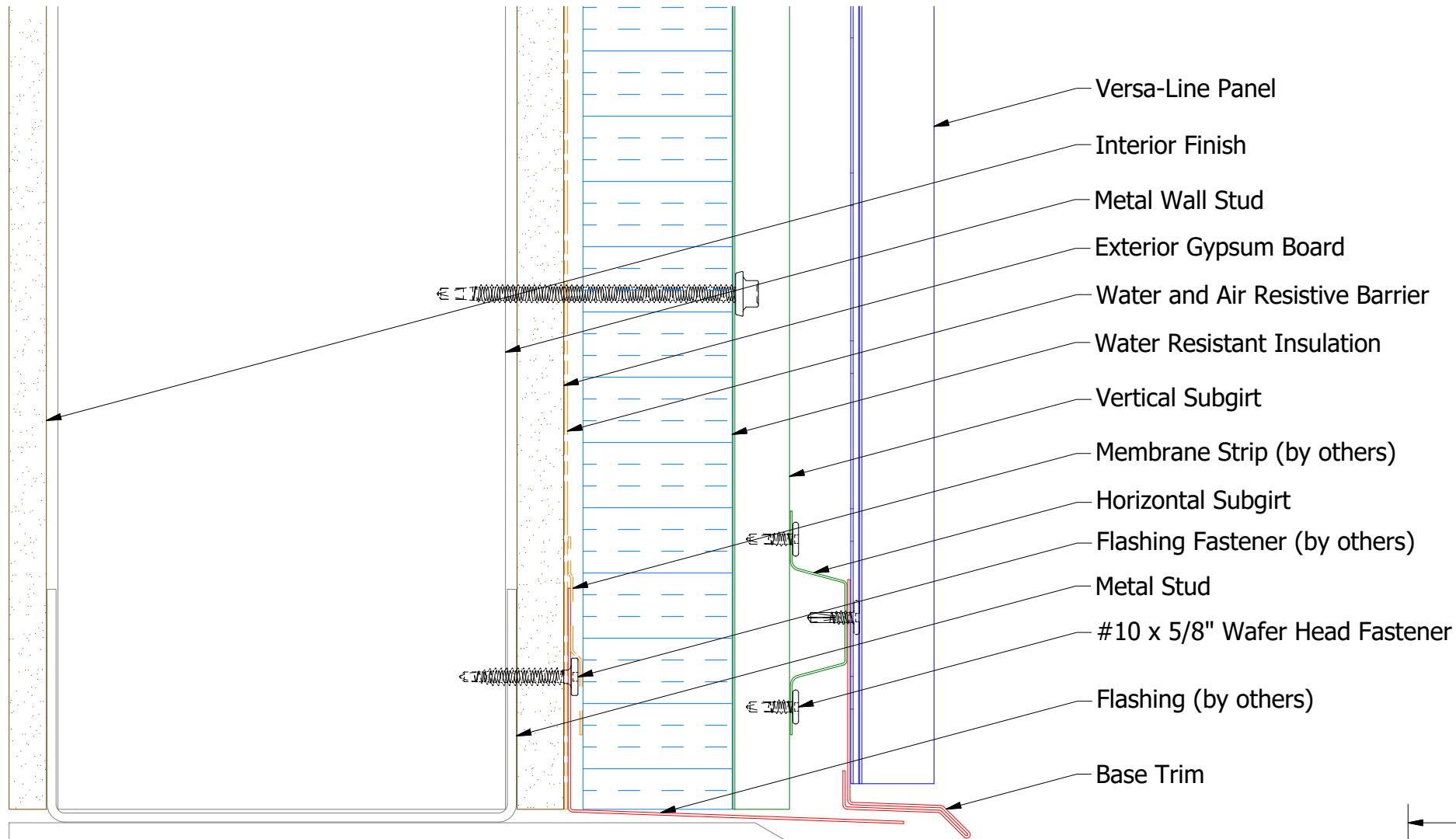
ATAS INTERNATIONAL, INC
 Allentown PA
 610-395-8445
 Mesa AZ
 480-558-7210

TITLE **Versa Line Panel Profile Detail**

DWG. NO.	DR	DATE
	KRK	5/10/2016
MATERIAL	APP	DATE
SH. SIZE	SCALE	X:X
B		

REV. NO.	DATE	DESCRIPTION OF REVISION	BY	APP

Vertical Panel

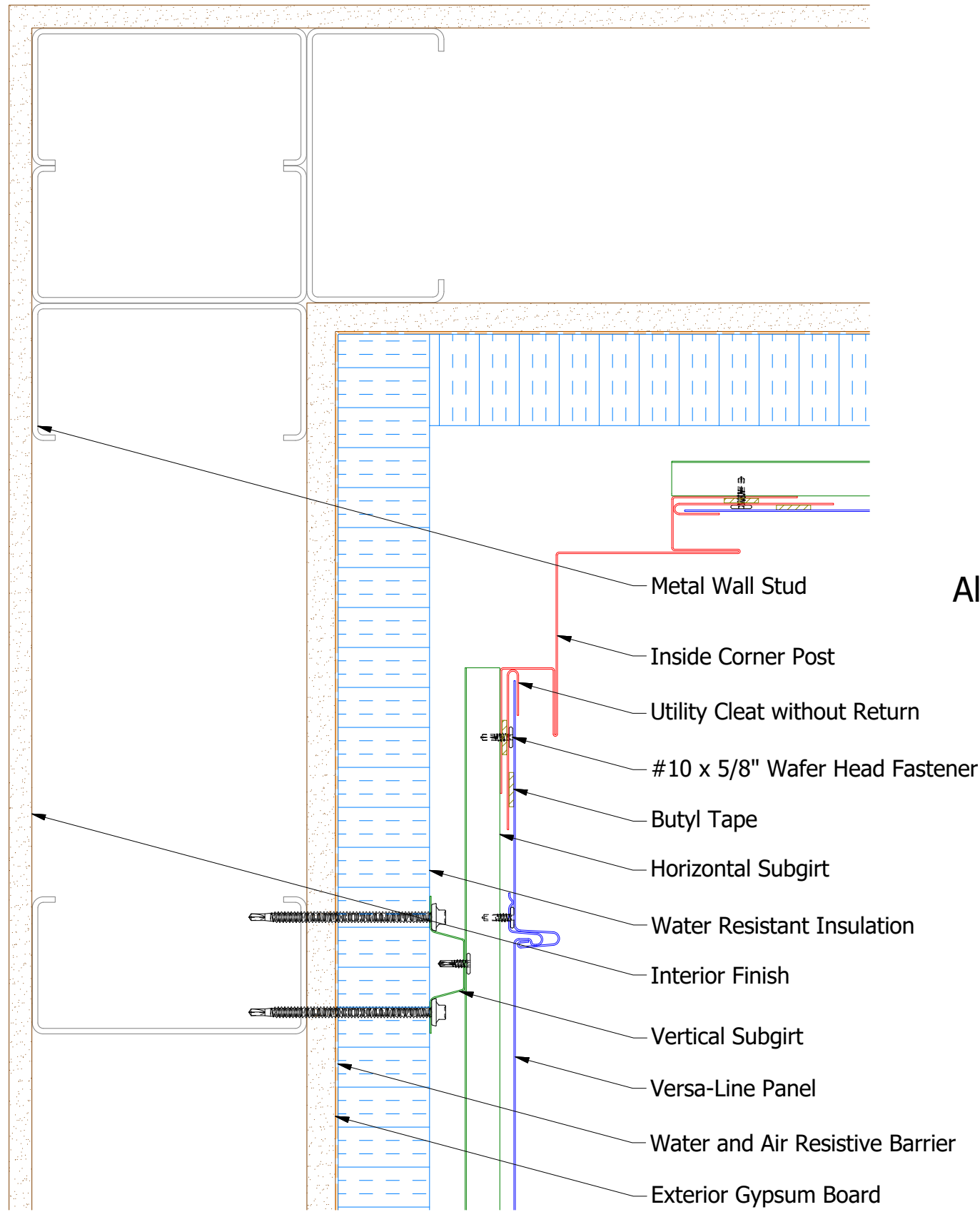


ATAS ATAS INTERNATIONAL, INC
 Allentown PA
 610-395-8445
 Mesa AZ
 480-558-7210

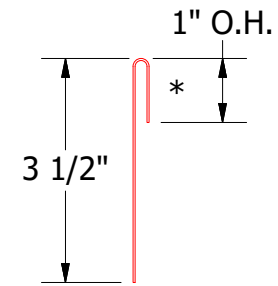
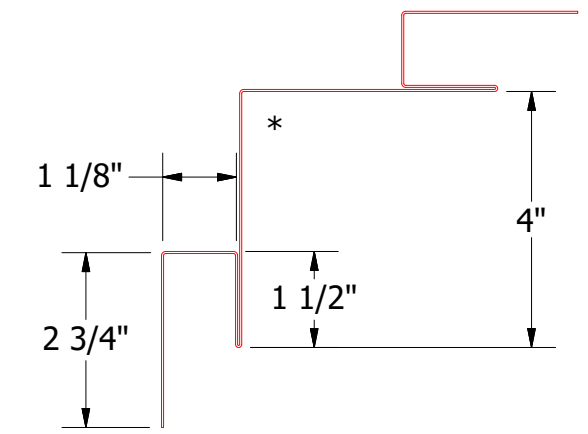
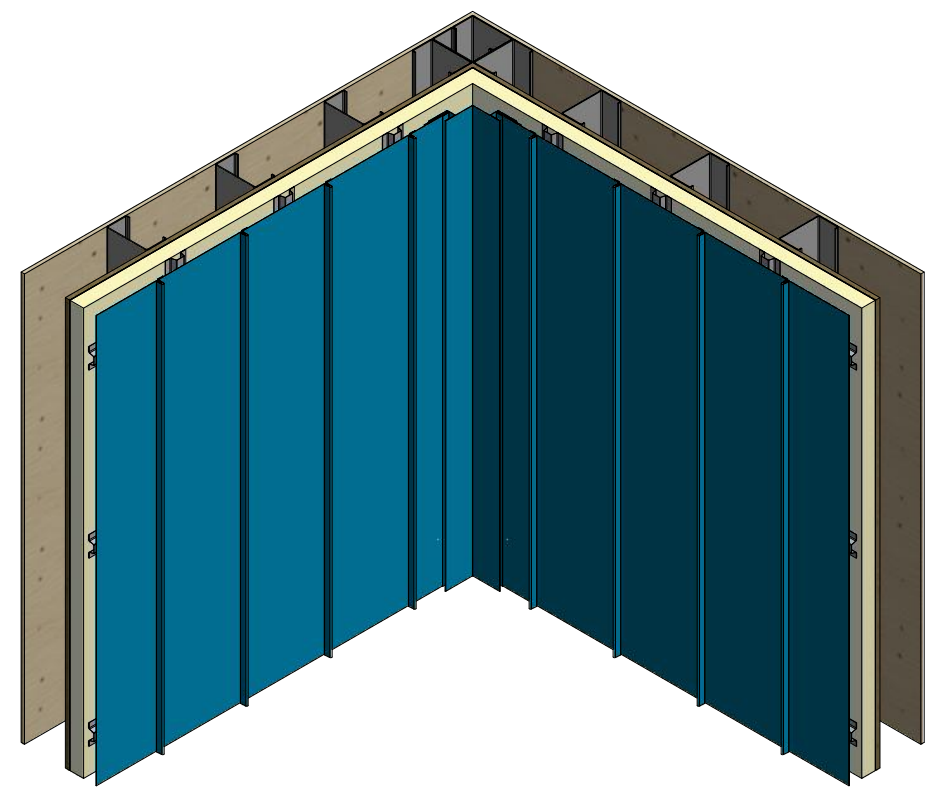
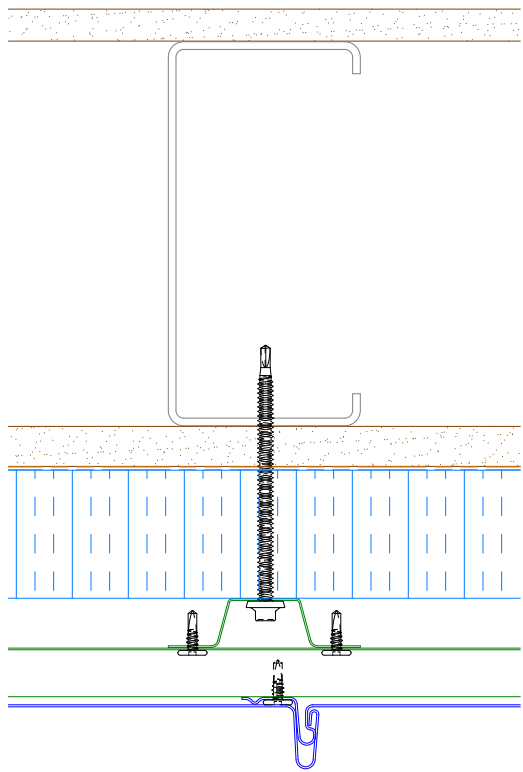
TITLE				Versa-Line Open Base Detail	
DWG. NO.		DR		DATE	
		DMR		1/18/2017	
MATERIAL		APP		DATE	
		SH. SIZE		SCALE	
		B		X:X	

REV. NO.	DATE	DESCRIPTION OF REVISION	BY	APP

Vertical Panel



Alternate Subgirt Orientation



VSA962-Utility Cleat without Return

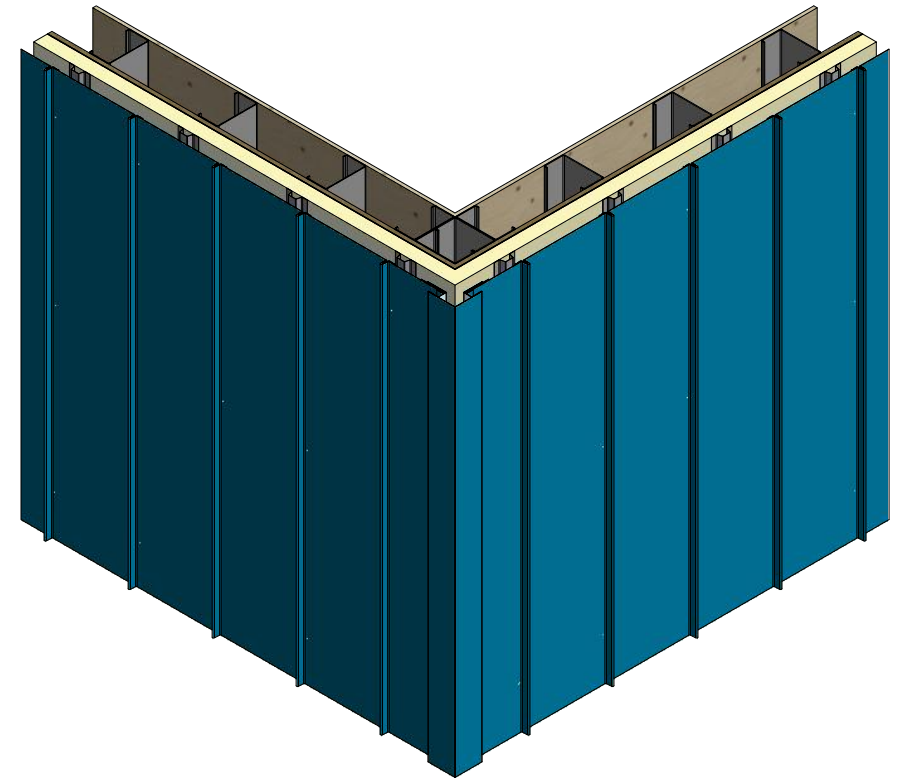
VSA601-Inside Corner Post


ATAS INTERNATIONAL, INC
 Allentown PA
 610-395-8445
 Mesa AZ
 480-558-7210

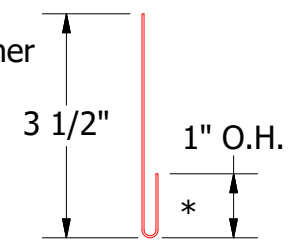
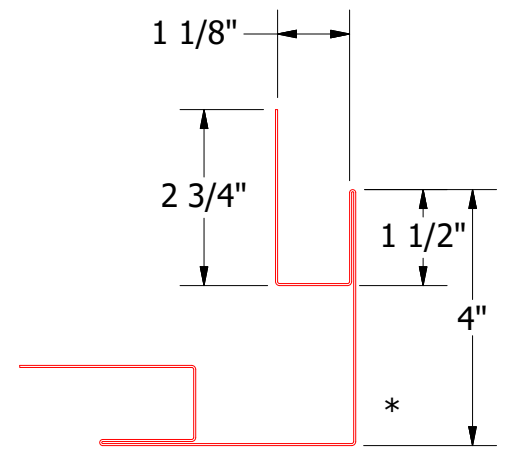
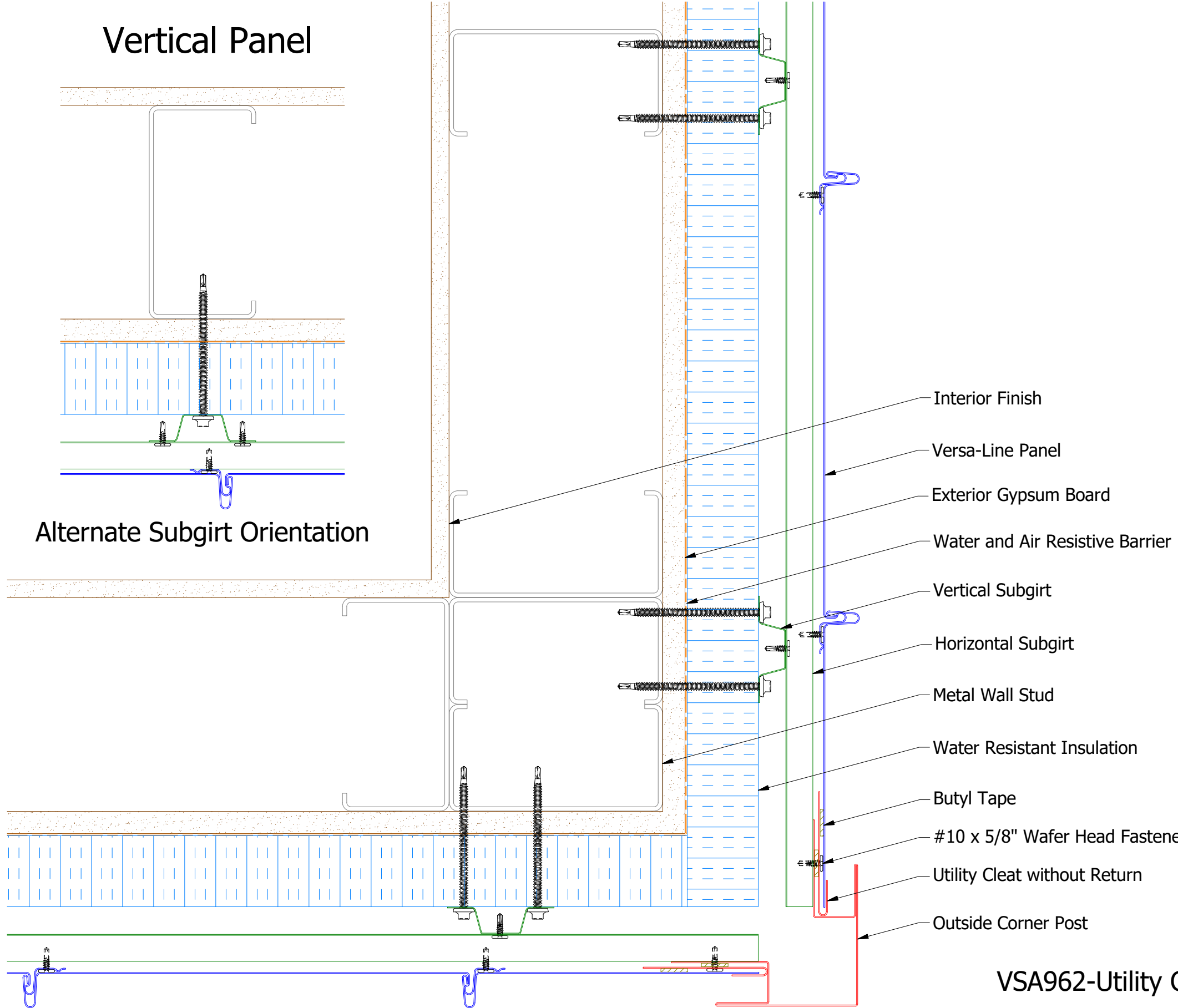
TITLE				Versa-Line Open Inside Corner Detail	
DWG. NO.	DR	DATE	APP	DMR	1/24/2017
MATERIAL	SH. SIZE	SCALE	X:X		

REV. NO.	DATE	DESCRIPTION OF REVISION	BY	APP

Vertical Panel



Alternate Subgirt Orientation



VSA602-Outside Corner Post

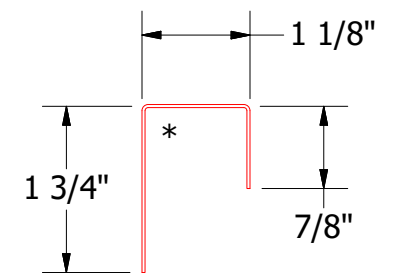
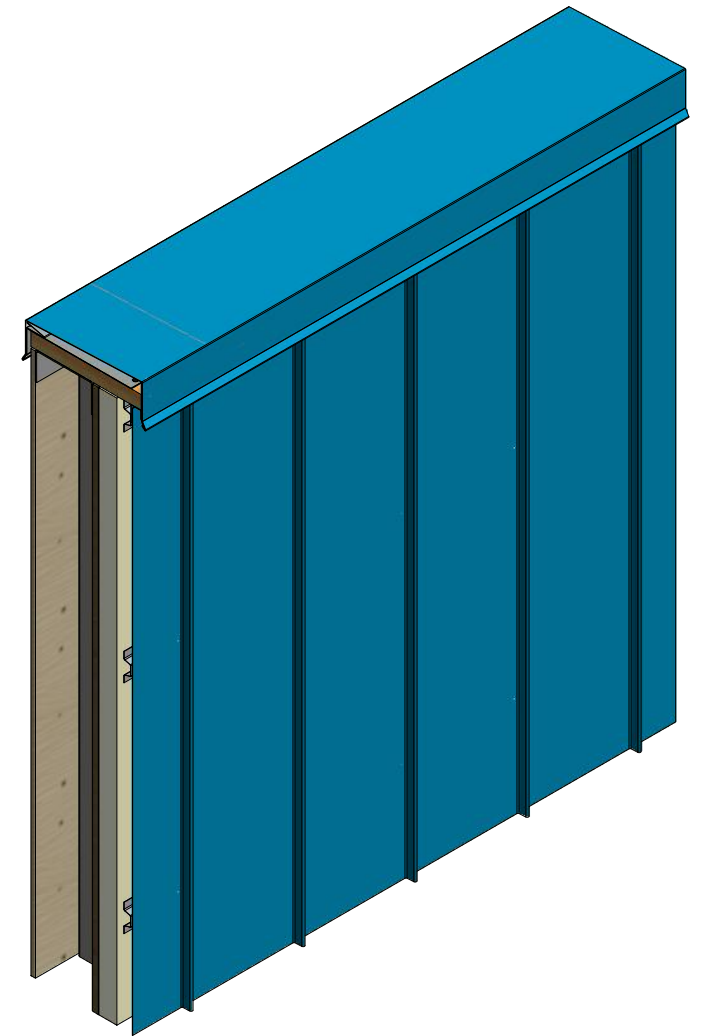
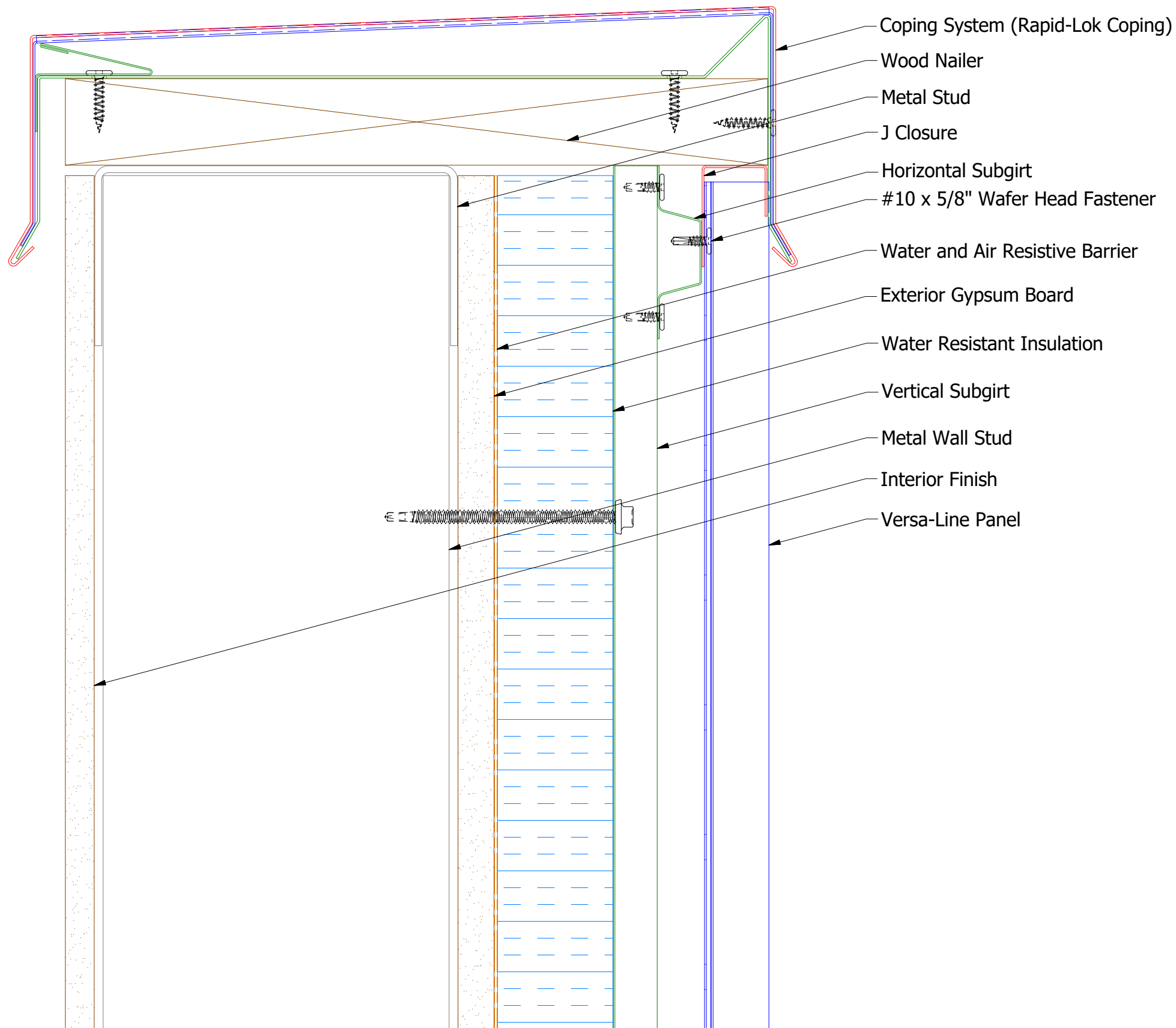
VSA962-Utility Cleat without Return

ATAS ATAS INTERNATIONAL, INC
 Allentown PA
 610-395-8445
 Mesa AZ
 480-558-7210

TITLE Versa-Line Open Outside Corner Detail			
DWG. NO.	DR	DATE	1/26/2017
	DMR		
MATERIAL	APP	DATE	
	SH. SIZE	B	SCALE X:X

REV. NO.	DATE	DESCRIPTION OF REVISION	BY	APP

Vertical Panel

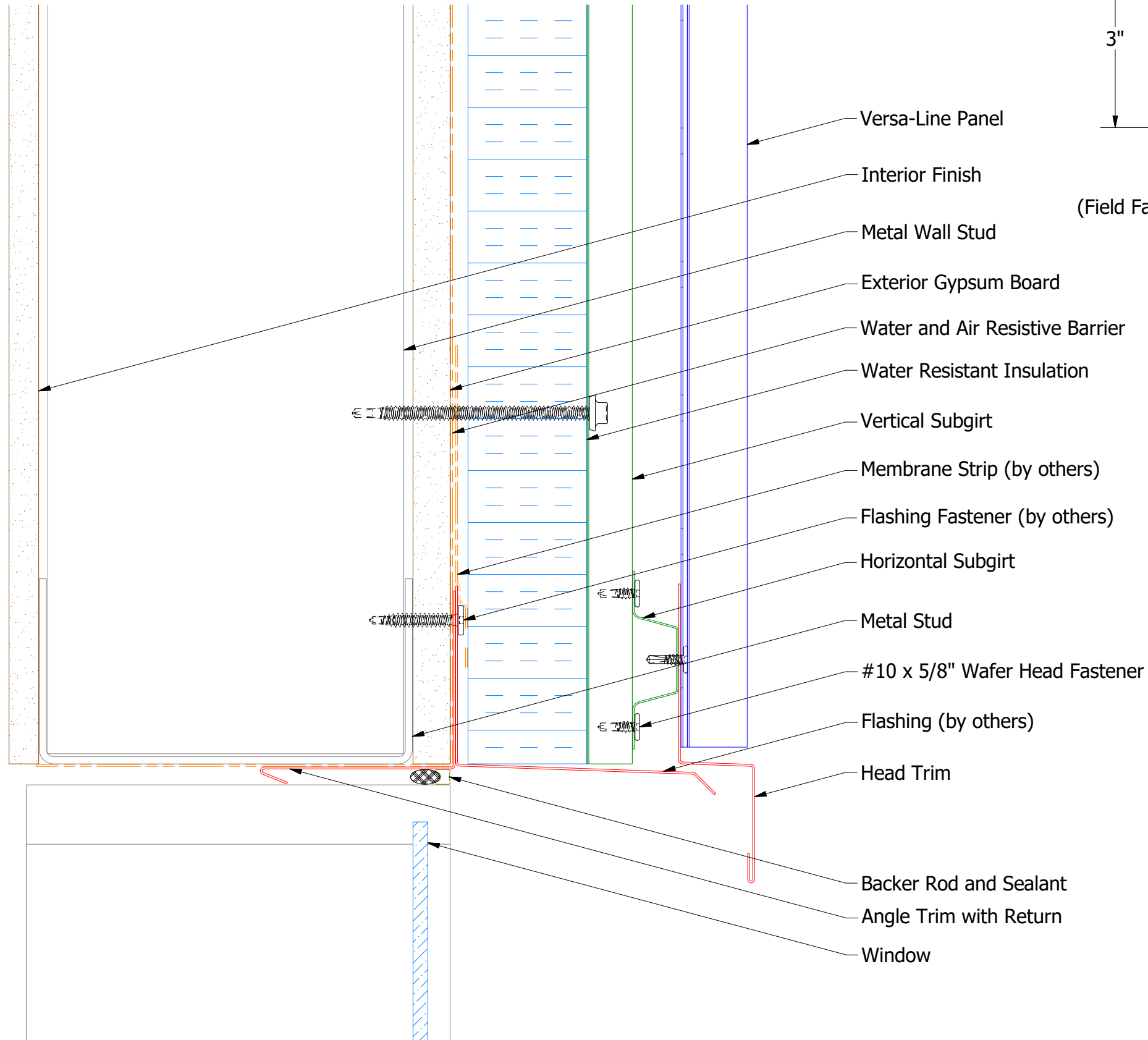


VSA270-J Closure

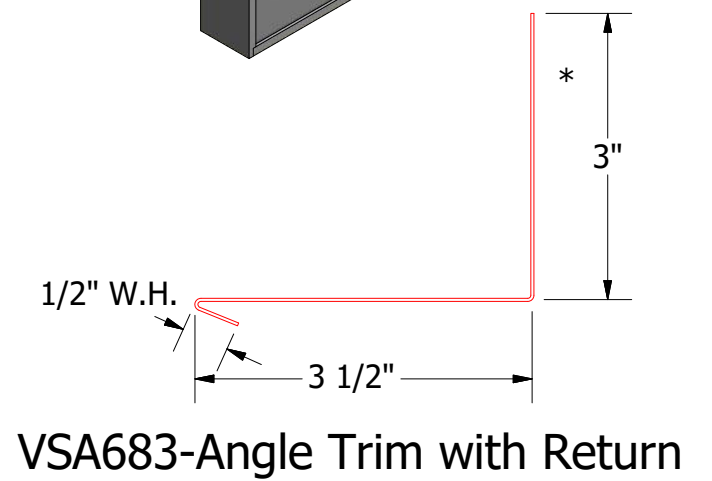
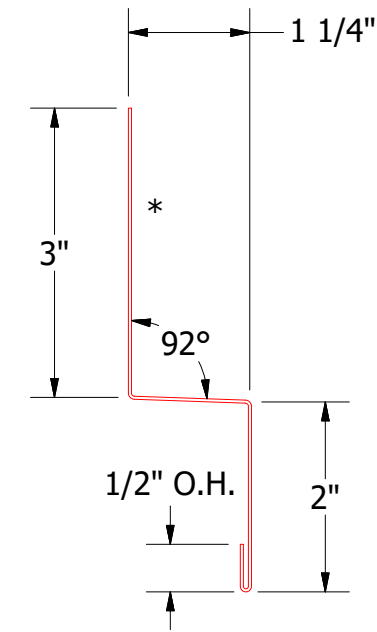
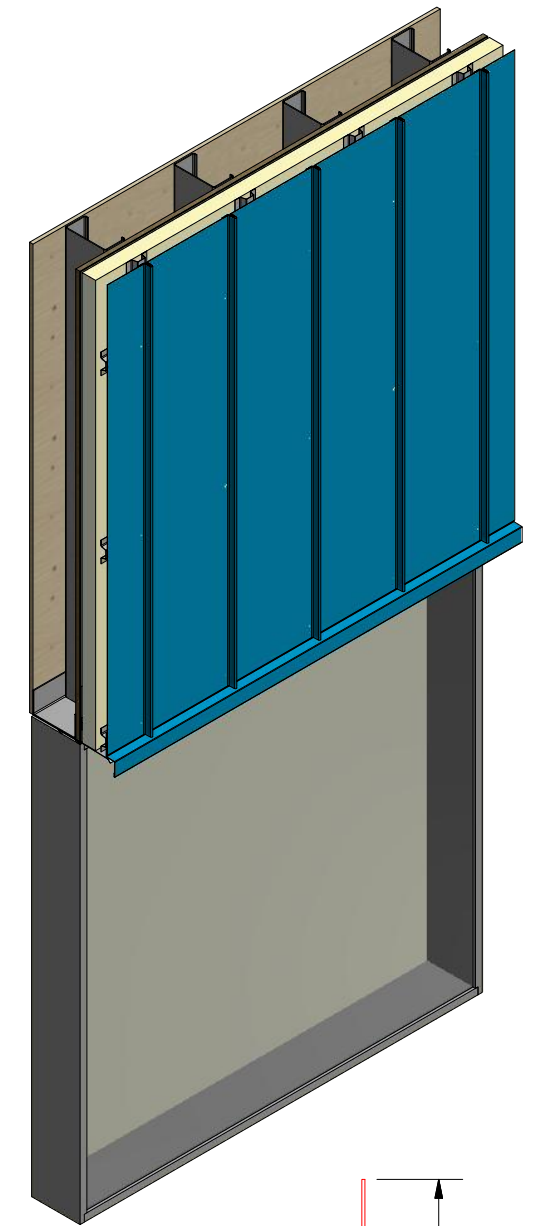
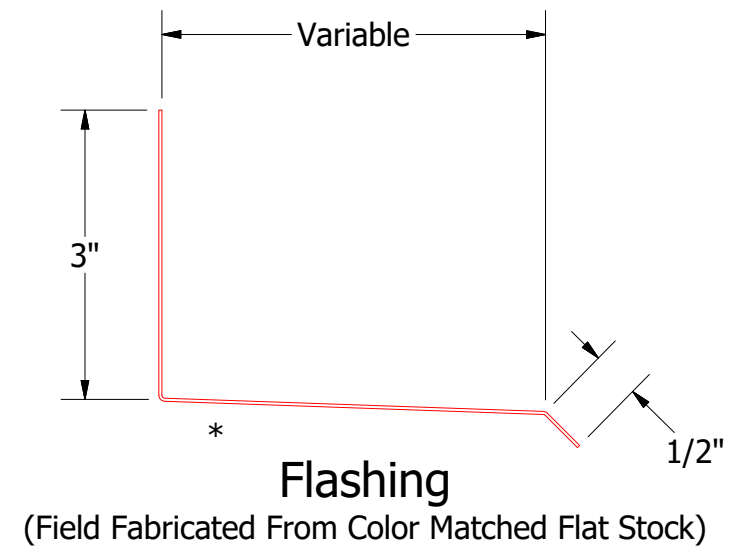

ATAS INTERNATIONAL, INC
 Allentown PA
 610-395-8445
 Mesa AZ
 480-558-7210

REV. NO.		DATE	DESCRIPTION OF REVISION	BY	APP	TITLE		Versa-Line Open Top of Wall Detail	
DWG. NO.		DR	DMR	DATE	1/26/2017	MATERIAL		SH. SIZE	B
						SCALE		X:X	

Vertical Panel



- Versa-Line Panel
- Interior Finish
- Metal Wall Stud
- Exterior Gypsum Board
- Water and Air Resistive Barrier
- Water Resistant Insulation
- Vertical Subgirt
- Membrane Strip (by others)
- Flashing Fastener (by others)
- Horizontal Subgirt
- Metal Stud
- #10 x 5/8" Wafer Head Fastener
- Flashing (by others)
- Head Trim
- Backer Rod and Sealant
- Angle Trim with Return
- Window



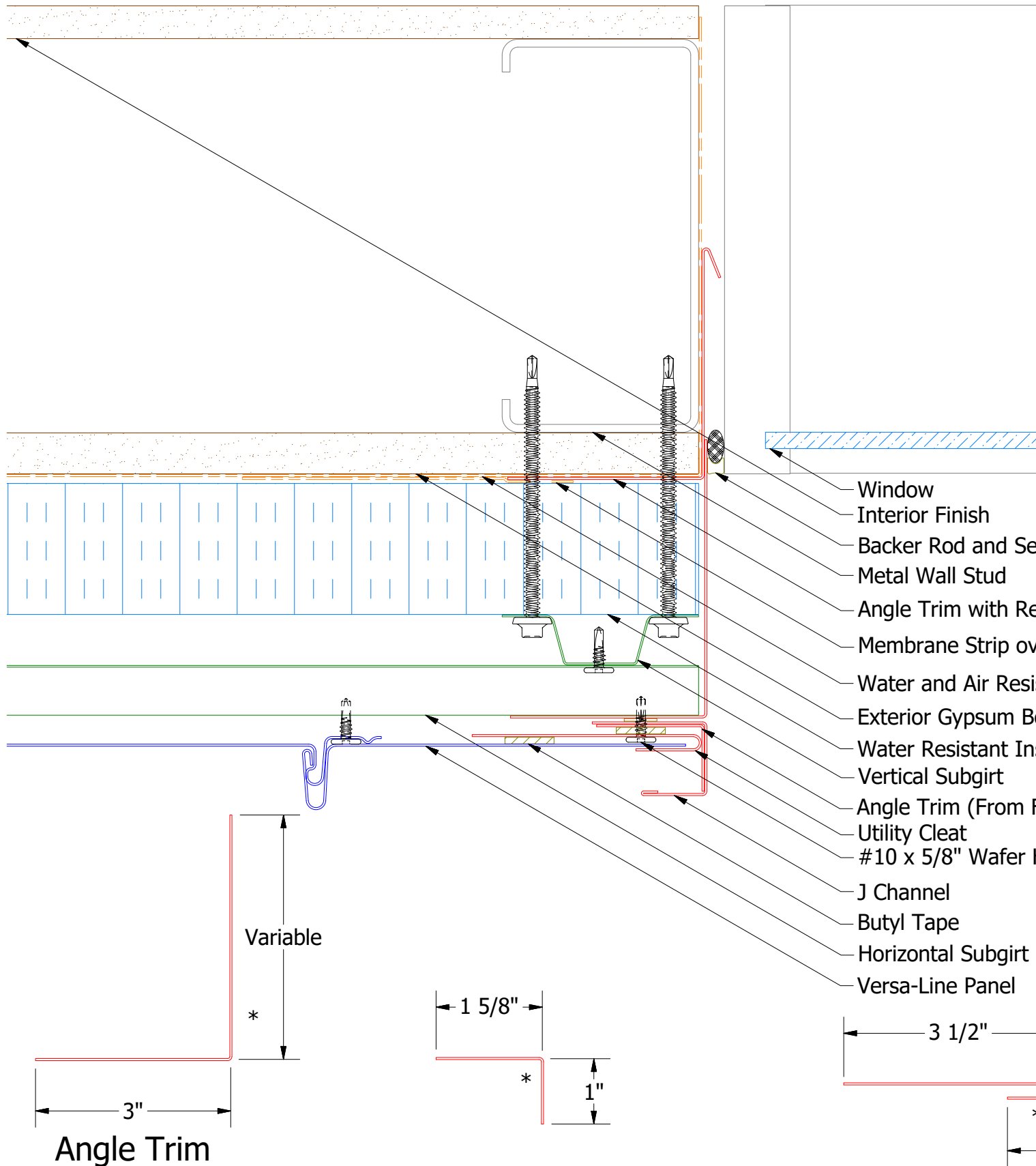
VSA550-Head Trim

VSA683-Angle Trim with Return

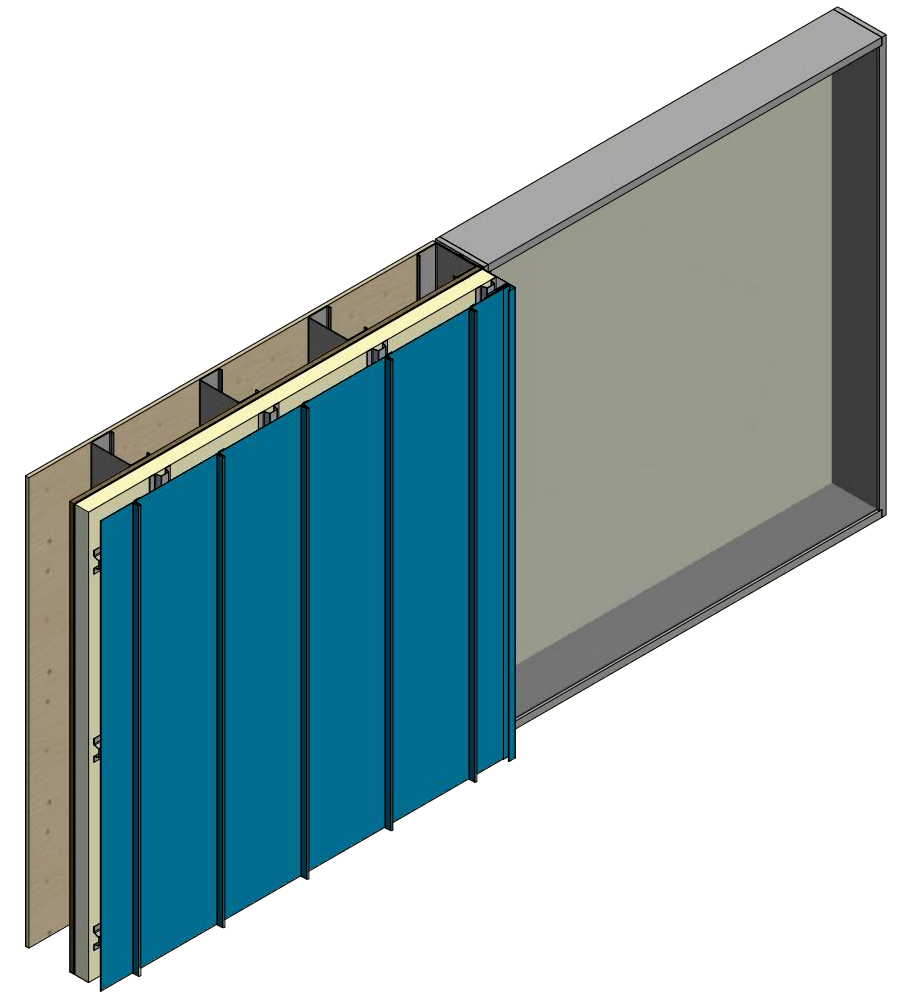
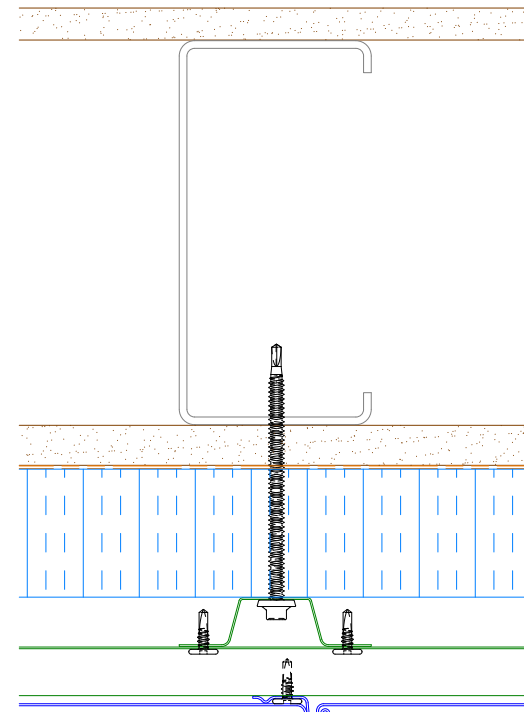
		ATAS INTERNATIONAL, INC Allentown PA 610-395-8445 Mesa AZ 480-558-7210	
		TITLE Versa-Line Open Head Detail	
DWG. NO.	DR	DATE	DATE
	DMR	1/23/2017	
MATERIAL	APP	DATE	
	SH. SIZE	B	SCALE X:X

REV. NO.	DATE	DESCRIPTION OF REVISION	BY	APP

Vertical Panel



Alternate Subgirt Orientation (NTS)



Angle Trim

VSA680-Angle Trim

VSA962-Utility Cleat without Return

VSA683-Angle Trim with Return

VSA118-J Channel

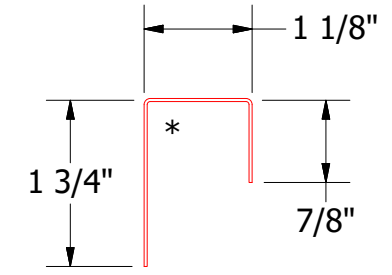
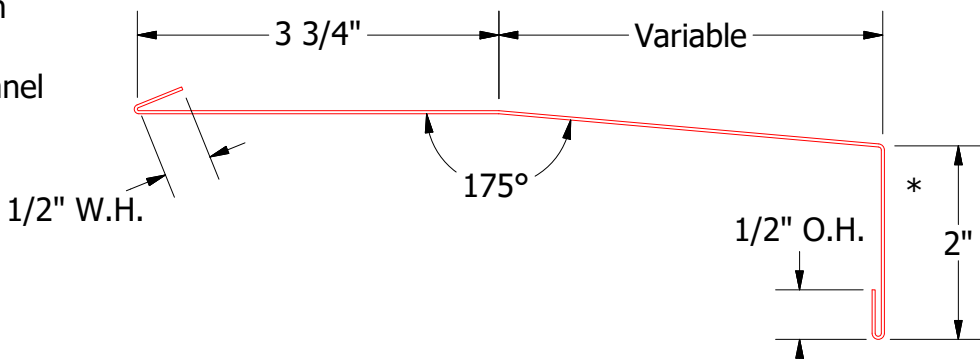
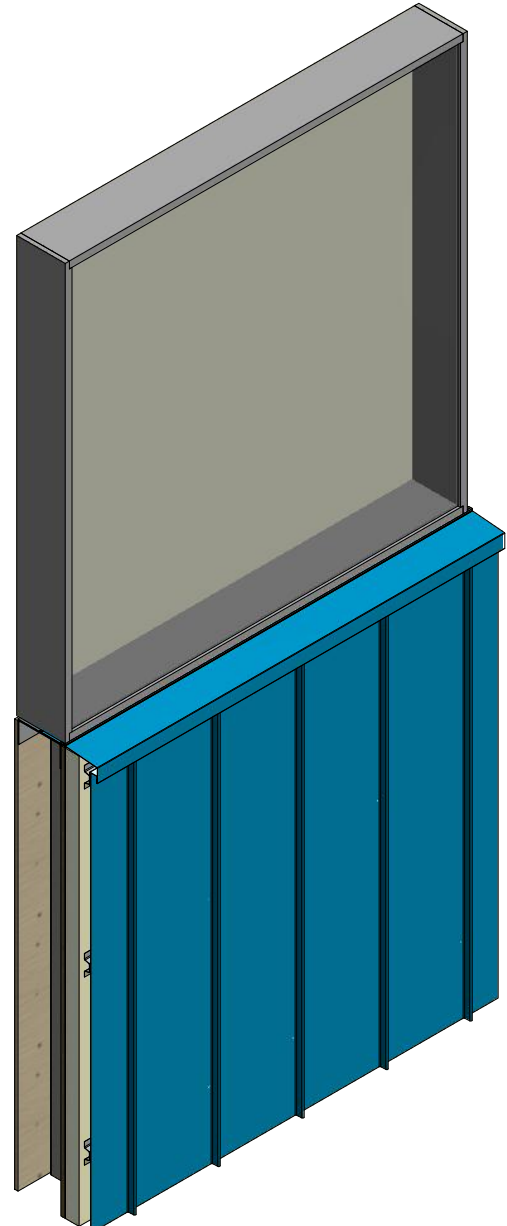
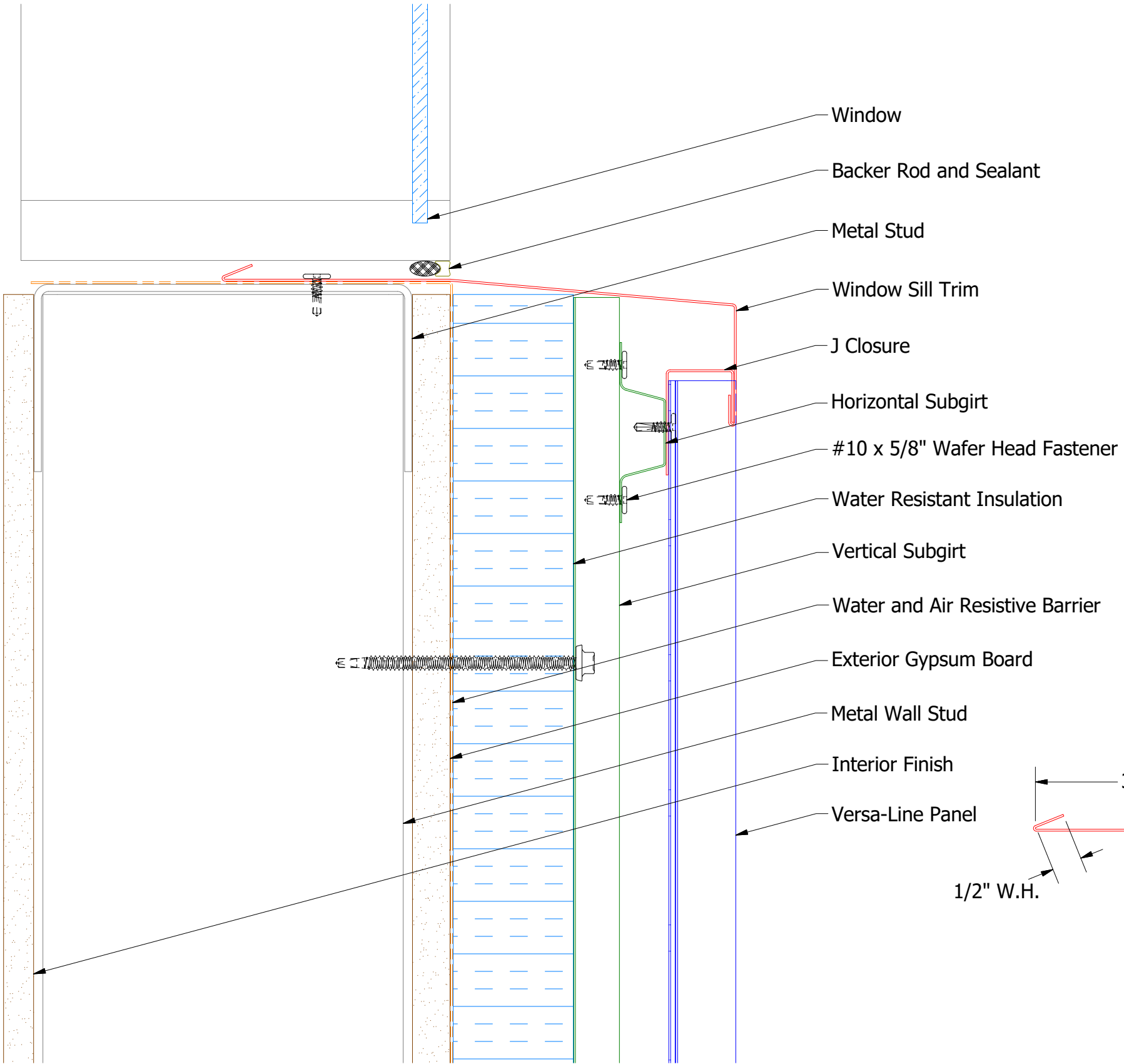
Note: * denotes color side.

REV. NO.	DATE	DESCRIPTION OF REVISION	BY	APP

TITLE		Versa-Line Open Jamb Detail	
DWG. NO.	DR	DATE	1/25/2017
	DMR		
MATERIAL	APP	DATE	
SH. SIZE	B	SCALE	X:X

ATAS ATAS INTERNATIONAL, INC
 Allentown PA
 610-395-8445
 Mesa AZ
 480-558-7210

Vertical Panel



VSA270-J Closure

VSA670-Window Sill Trim

ATAS ATAS INTERNATIONAL, INC
 Allentown PA
 610-395-8445
 Mesa AZ
 480-558-7210

TITLE: Versa-Line Open Window Sill Detail

DWG. NO.	DR	DATE
	DMR	1/27/2017
MATERIAL	APP	DATE
	SH. SIZE	SCALE
	B	X:X

REV. NO.	DATE	DESCRIPTION OF REVISION	BY	APP