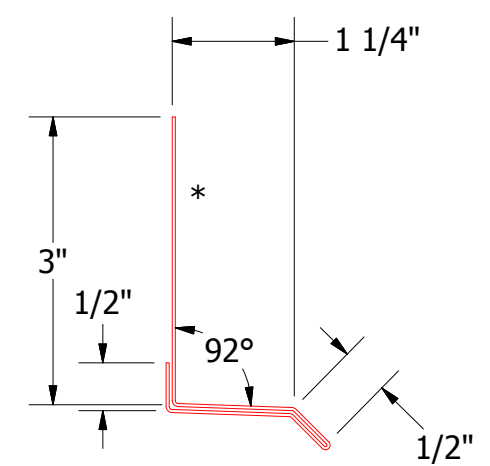
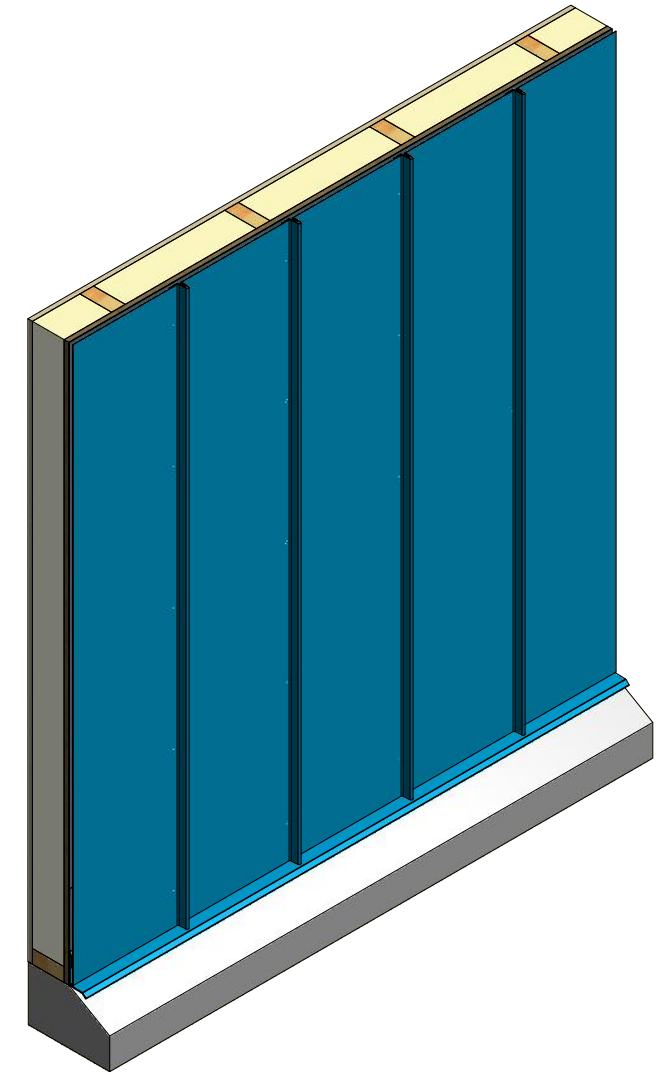
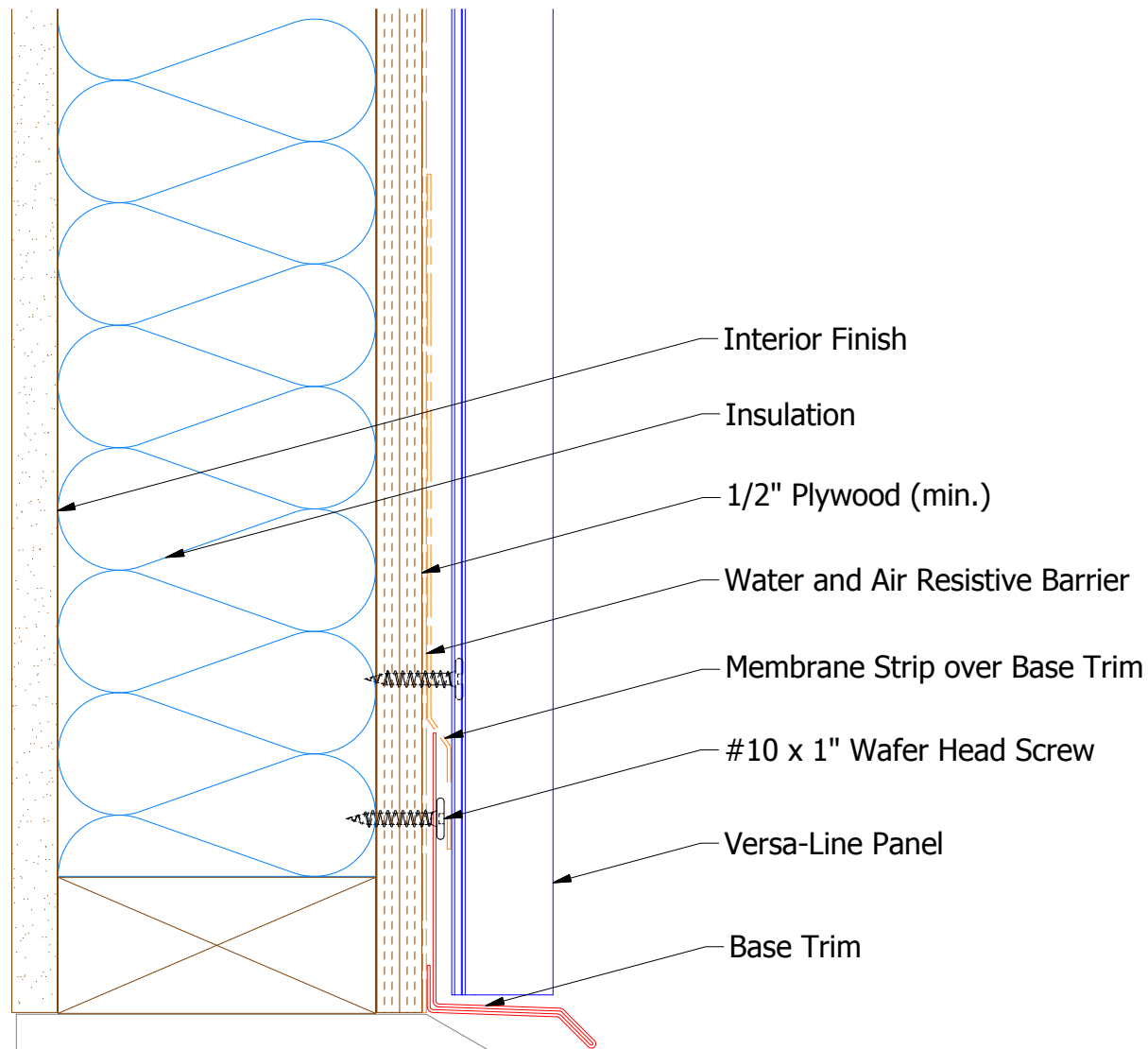


Vertical Panel



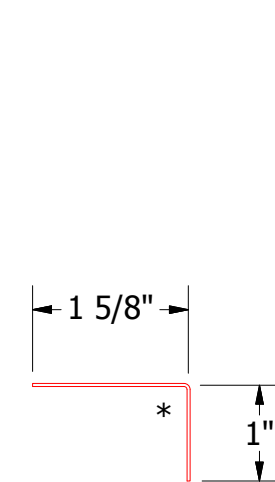
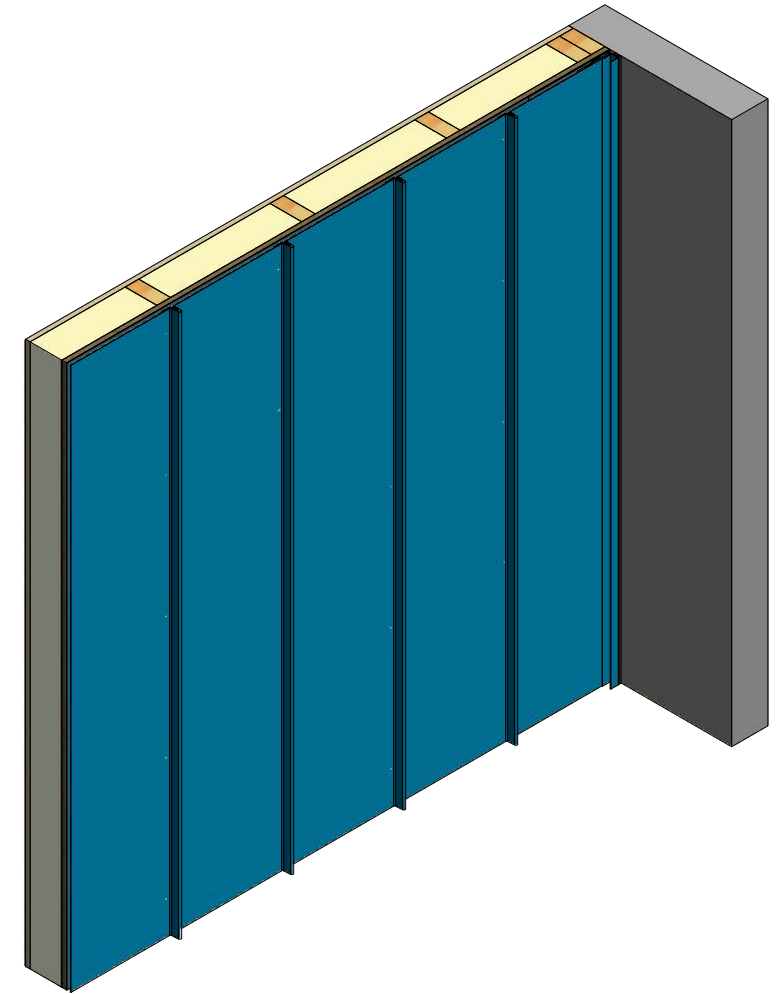
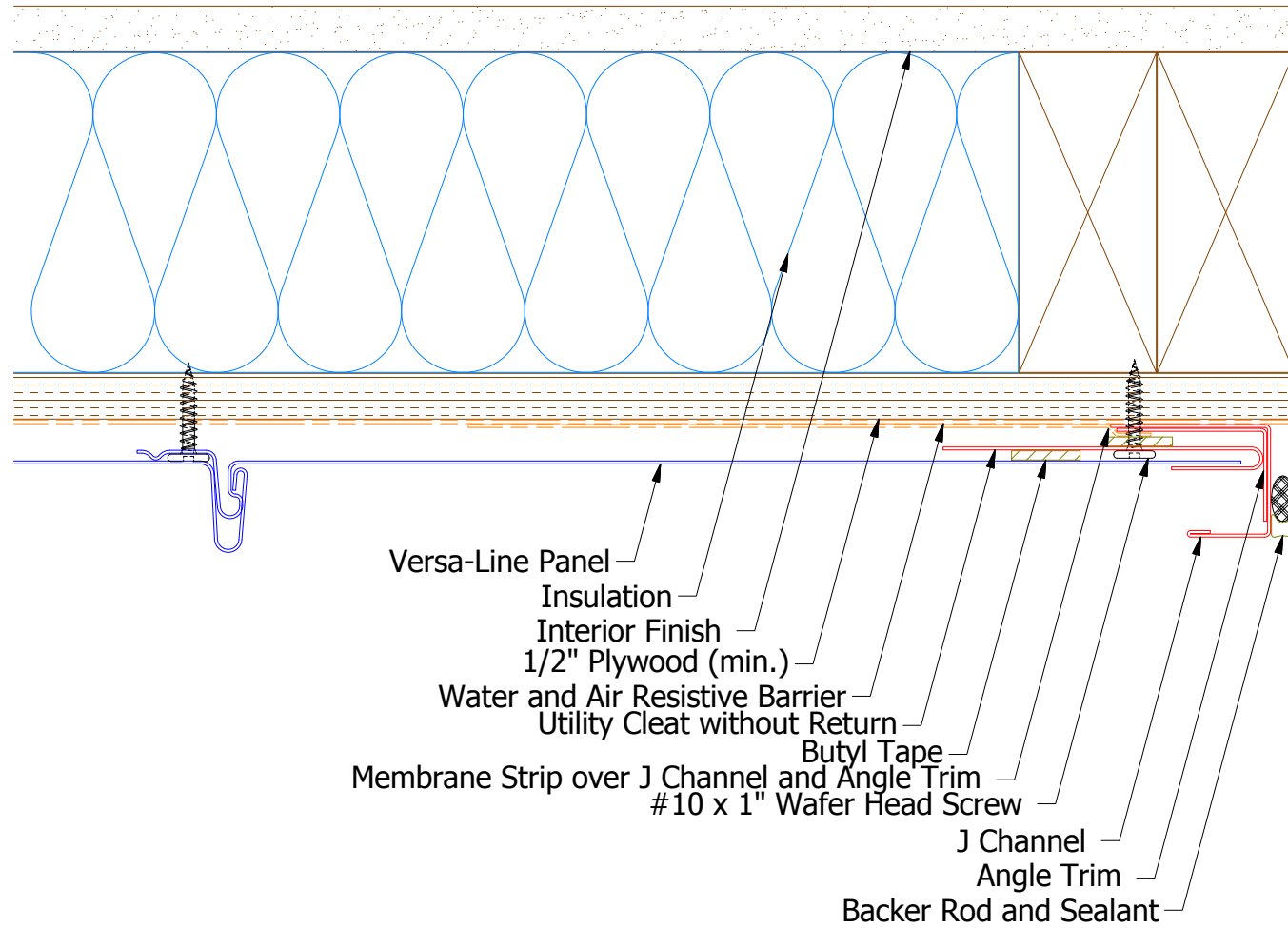
VSA661 - Base Trim

ATAS ATAS INTERNATIONAL, INC
 Allentown PA
 610-395-8445
 Mesa AZ
 480-558-7210

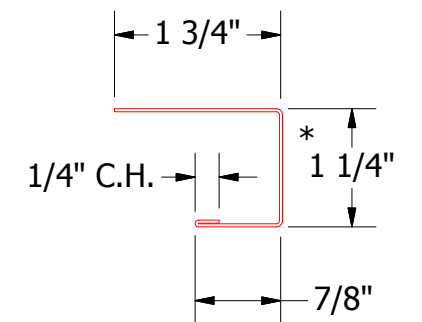
TITLE
Versa-Line Base Detail

REV. NO.	DATE	DESCRIPTION OF REVISION	BY	APP	DWG. NO.	DR	DATE
						DMR	11/23/2016
					MATERIAL	APP	DATE
						SH. SIZE	SCALE
						B	X:X

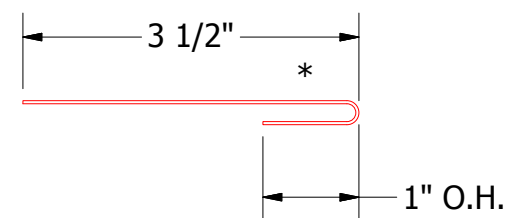
Vertical Panel



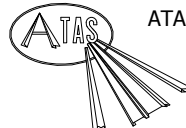
VSA680 - Angle Trim



VSA118 - J Channel

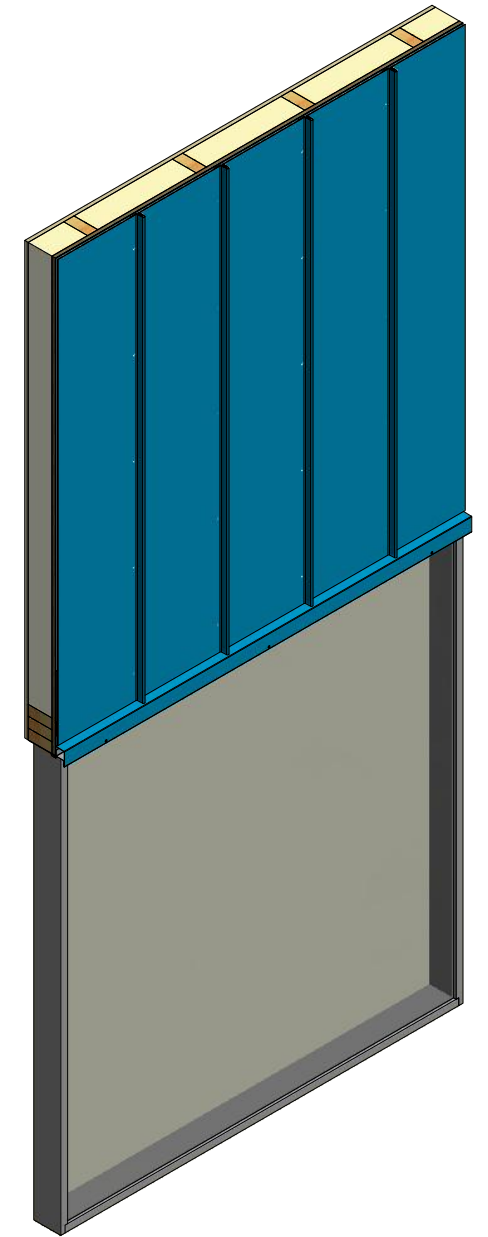
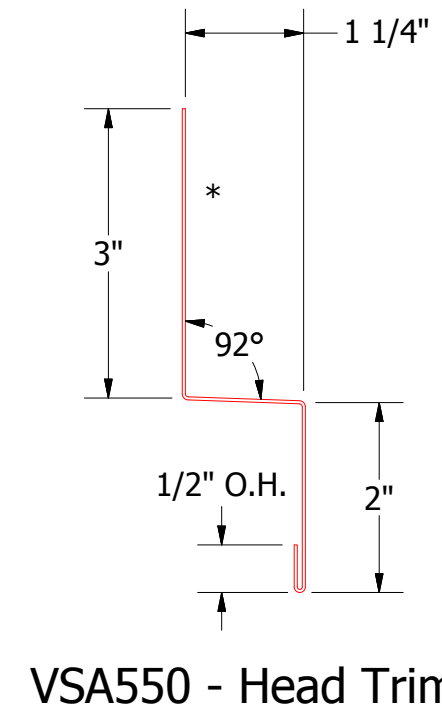
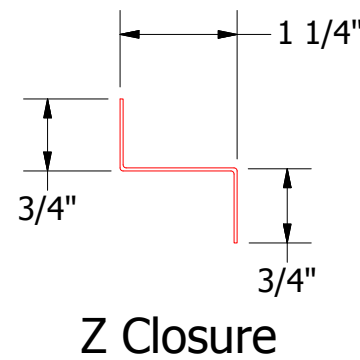
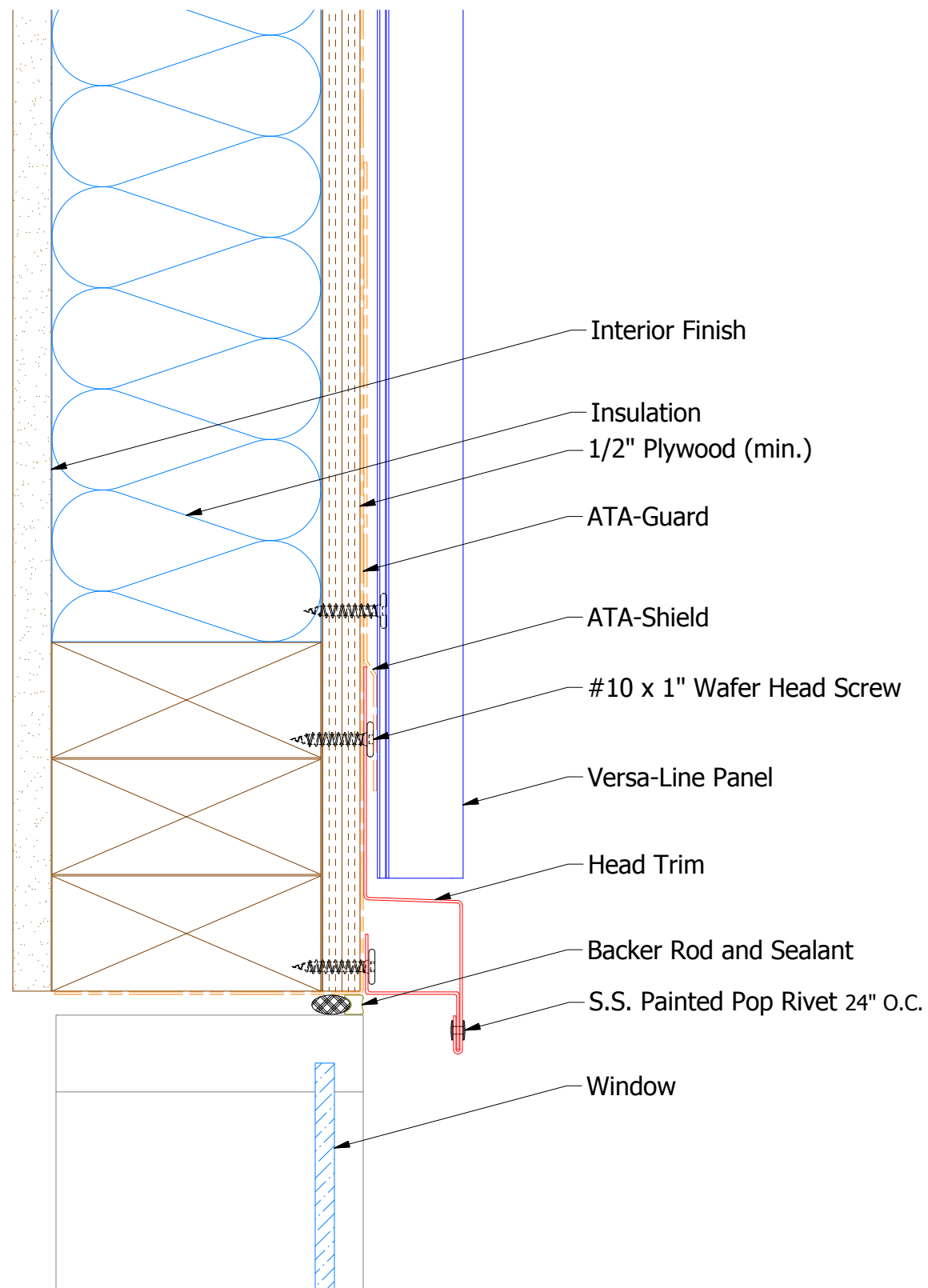


VSA962 - Utility Cleat without Return

 ATAS INTERNATIONAL, INC Allentown PA 610-395-8445 Mesa AZ 480-558-7210		TITLE	
		Versa-Line Endwall Detail	
DWG. NO.	DR	DATE	
	DMR	11/28/2016	
MATERIAL	APP	DATE	
	SH. SIZE	B	SCALE X:X

REV. NO.	DATE	DESCRIPTION OF REVISION	BY	APP

Vertical Panel

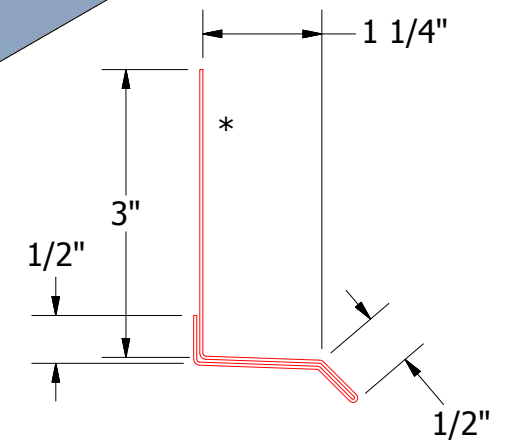
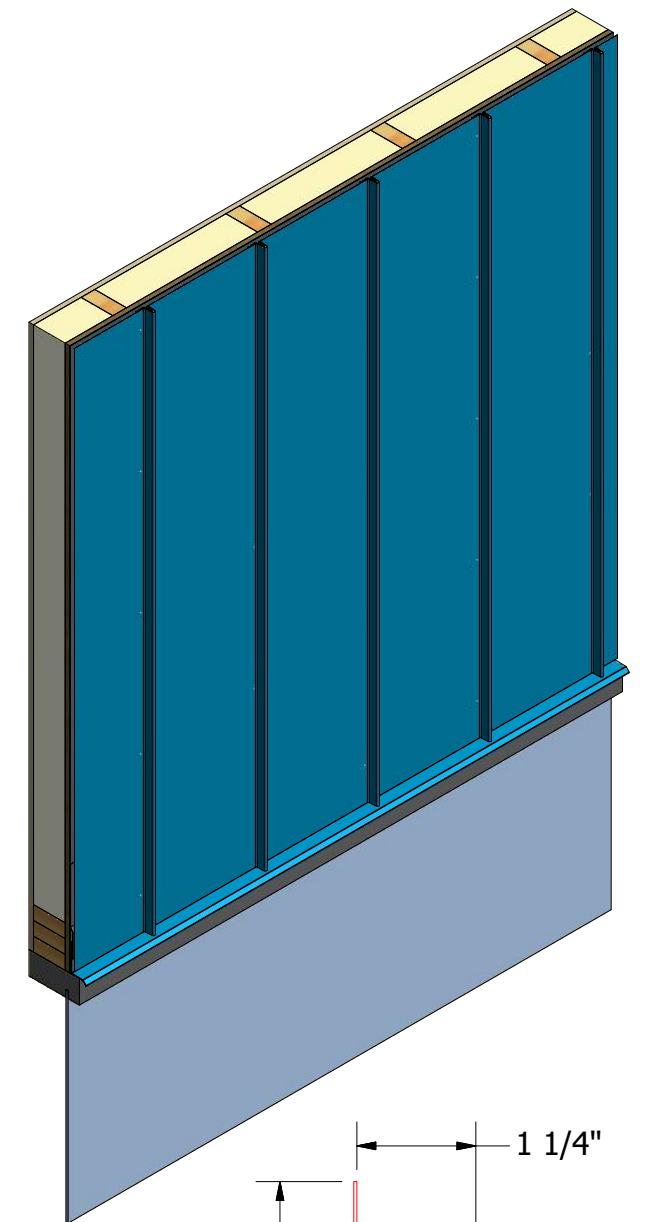
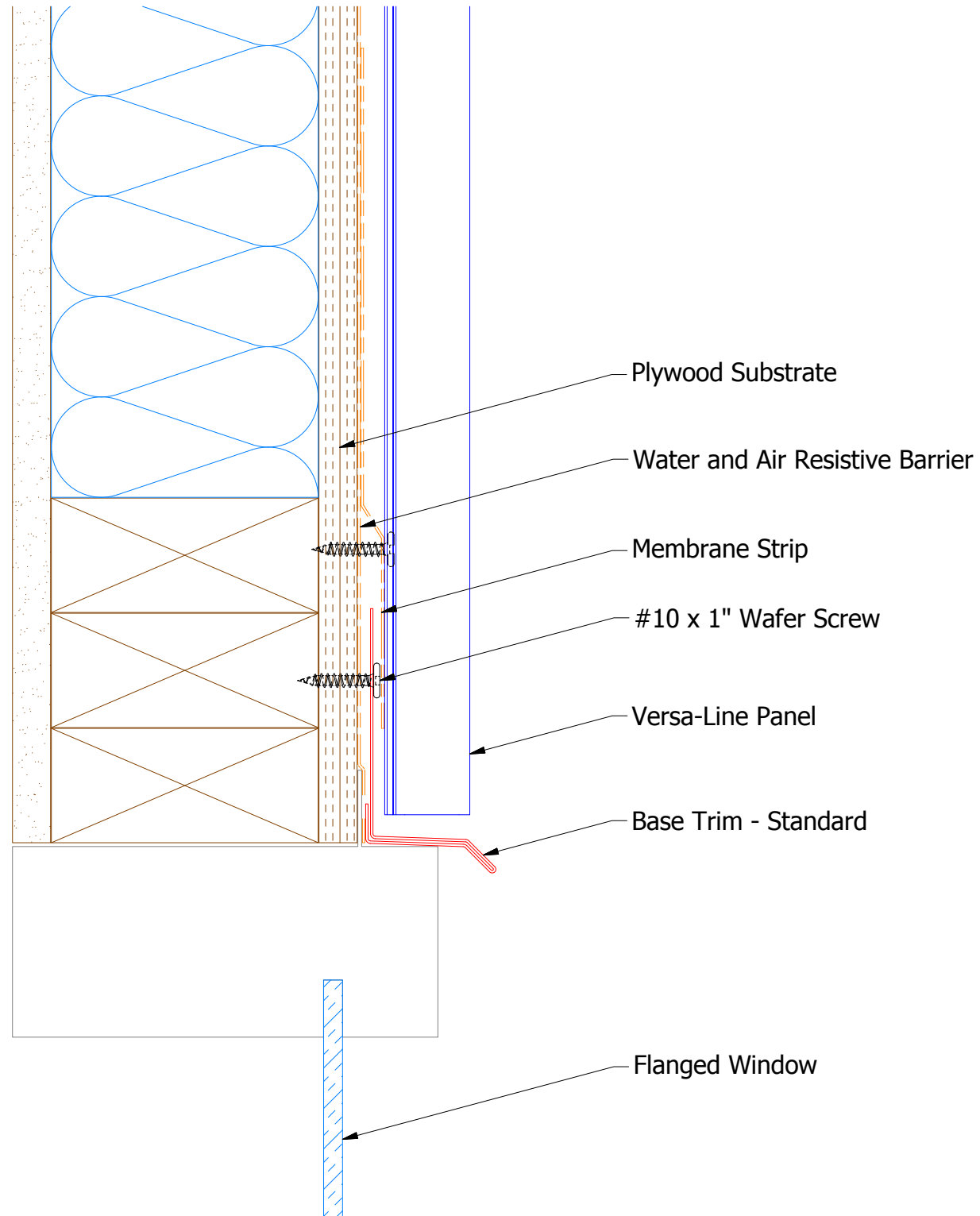


ATAS INTERNATIONAL, INC
 Allentown PA
 610-395-8445
 Mesa AZ
 480-558-7210

TITLE Versa-Line Head Existing Window Detail


REV. NO.	DATE	DESCRIPTION OF REVISION	BY	APP	DWG. NO.	DR	DATE
						MBP	7/20/18
					MATERIAL	APP	DATE
					SH. SIZE	B	SCALE X:X

Vertical Panel

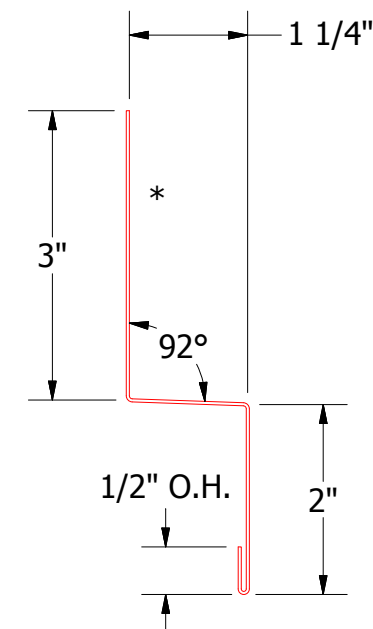
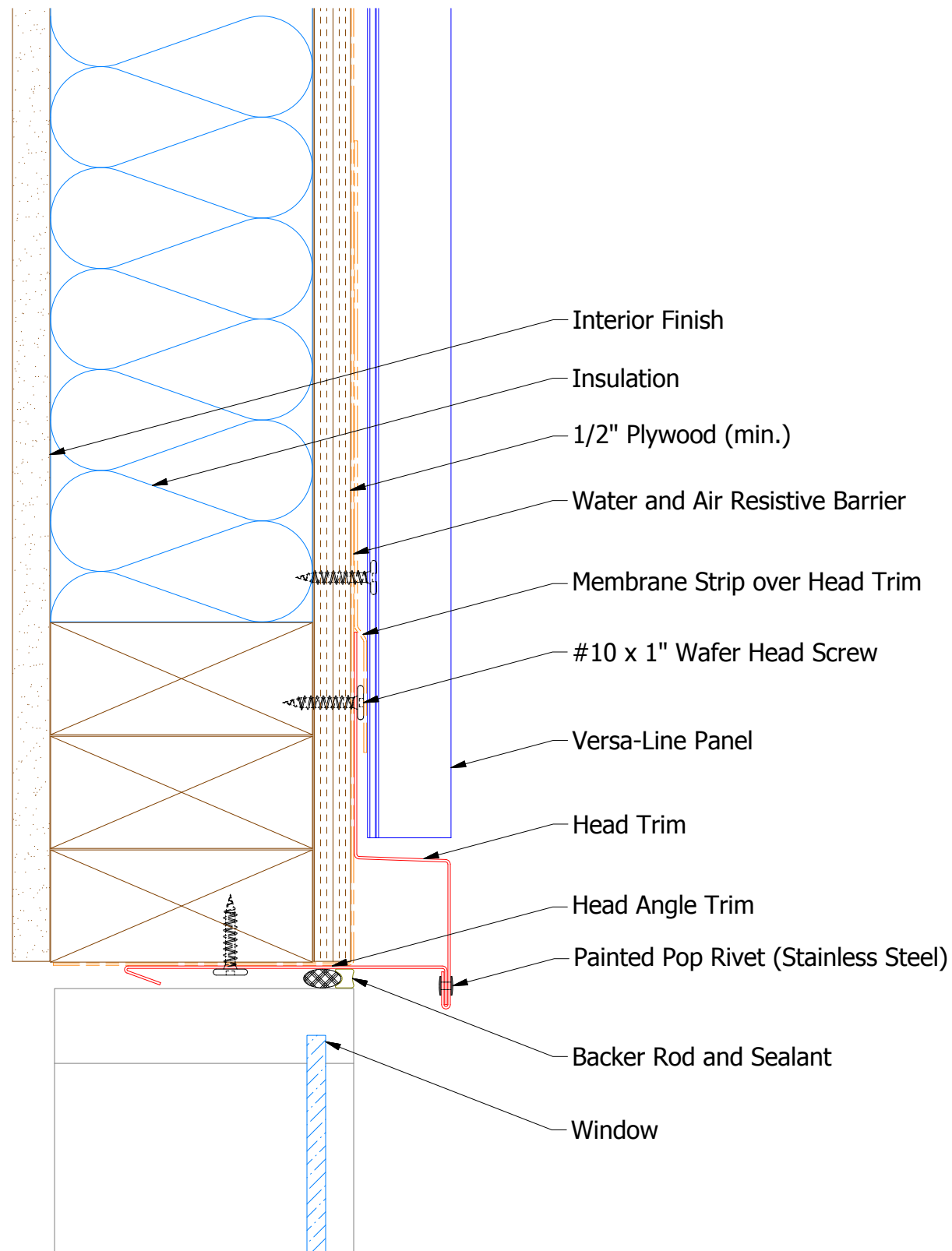


VSA661 - Base Trim - Standard

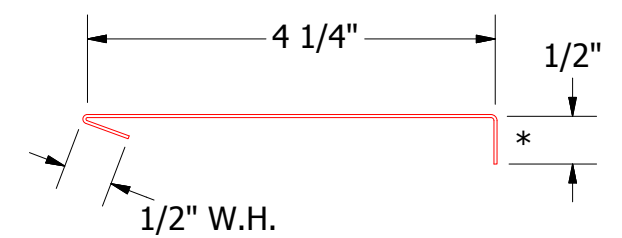
Note: * denotes color side.

 ATAS INTERNATIONAL, INC Allentown PA 610-395-8445 Mesa AZ 480-558-7210		TITLE Versa-Line Window Flange Head Detail		
		DWG. NO.	DR KRK APP	DATE 12/14/2018
REV. NO.	DATE	DESCRIPTION OF REVISION	BY APP	SH. SIZE B SCALE X:X

Vertical Panel



VSA550 - Head Trim



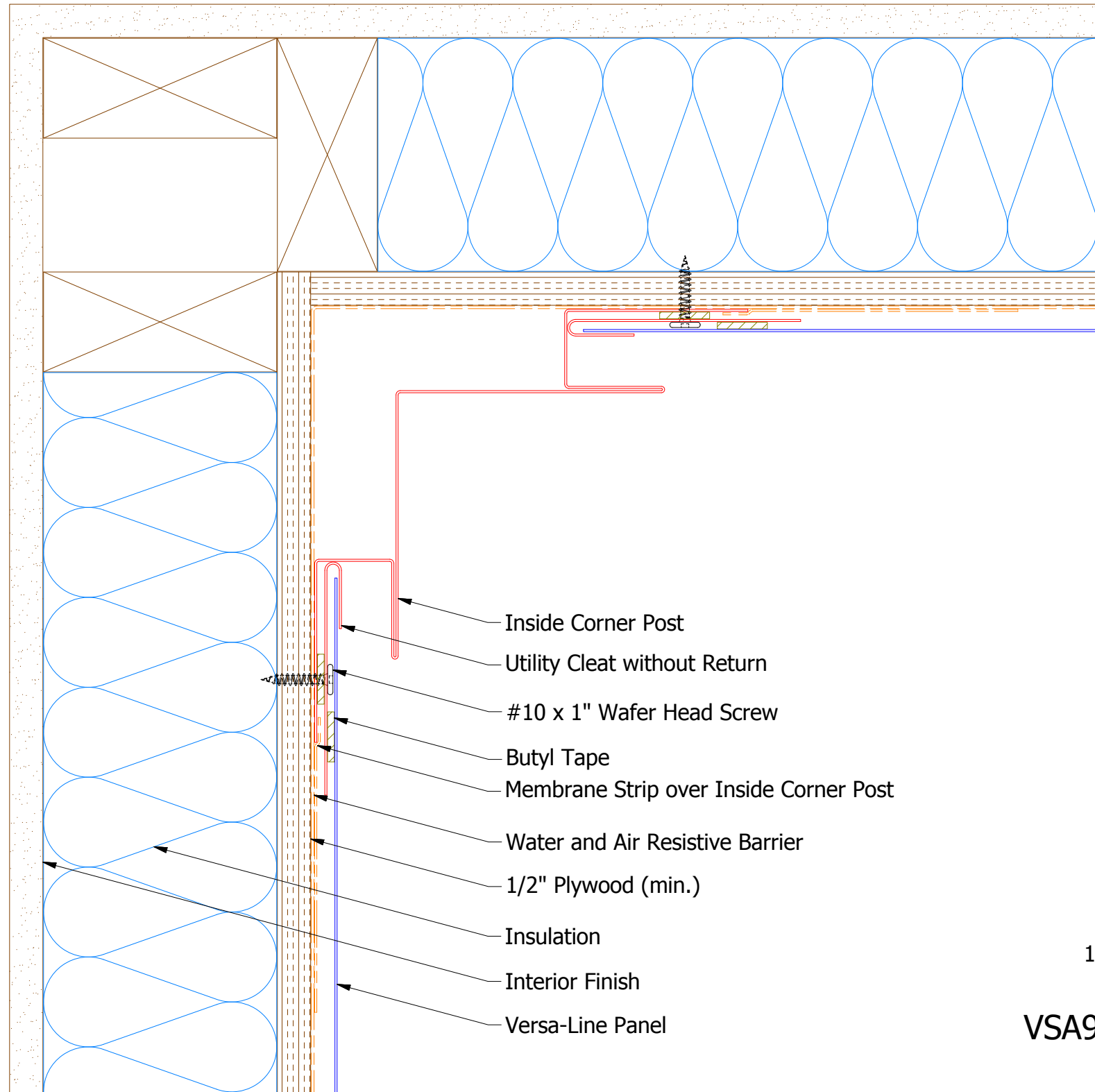
VSA690 - Head Angle Trim

ATAS ATAS INTERNATIONAL, INC
 Allentown PA
 610-395-8445
 Mesa AZ
 480-558-7210

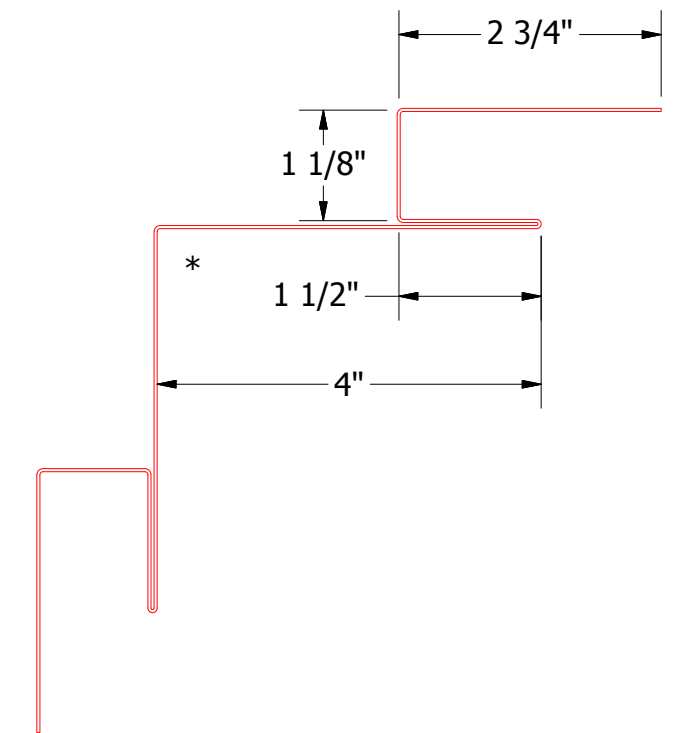
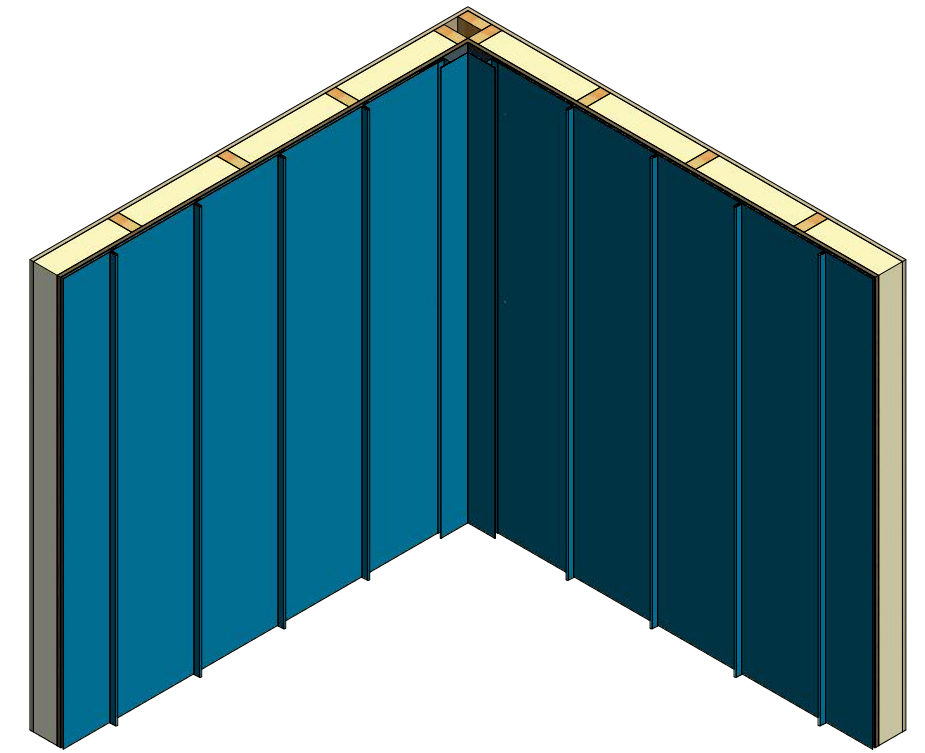
TITLE **Versa-Line Head Detail**

REV. NO.	DATE	DESCRIPTION OF REVISION	BY	APP	DWG. NO.	DR	DATE
						DMR	11/28/2016
					MATERIAL	APP	DATE
					SH. SIZE	B	SCALE
							X:X

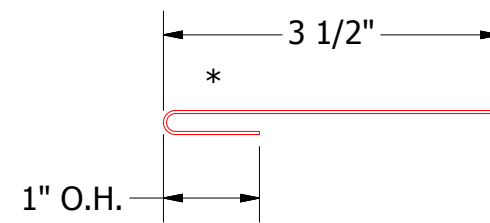
Vertical Panel




- Inside Corner Post
- Utility Cleat without Return
- #10 x 1" Wafer Head Screw
- Butyl Tape
- Membrane Strip over Inside Corner Post
- Water and Air Resistive Barrier
- 1/2" Plywood (min.)
- Insulation
- Interior Finish
- Versa-Line Panel



VSA601 - Inside Corner Post



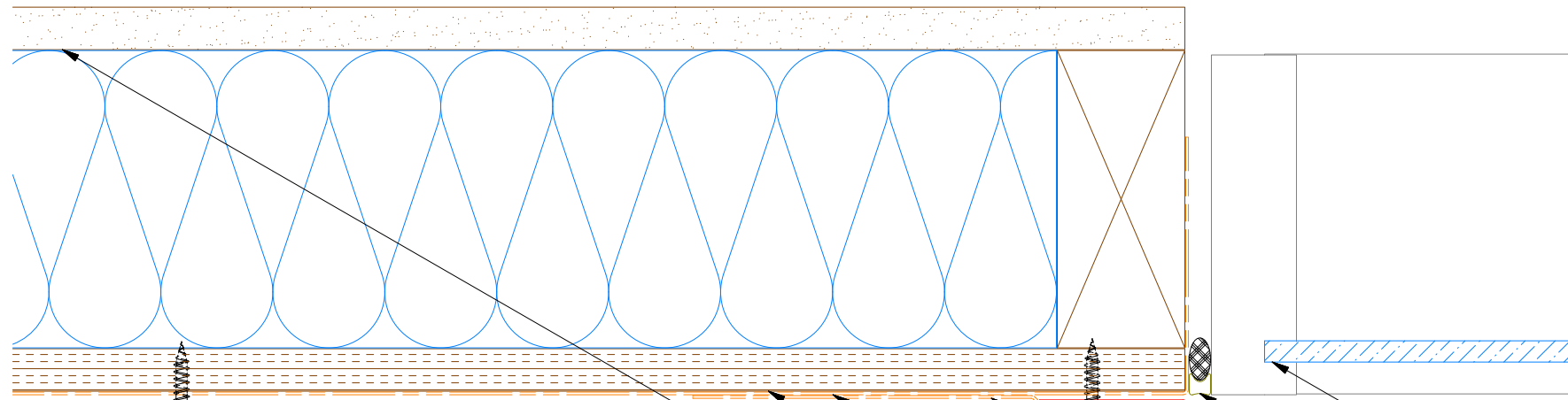
VSA962 - Utility Cleat without Return


ATAS INTERNATIONAL, INC
 Allentown PA
 610-395-8445
 Mesa AZ
 480-558-7210

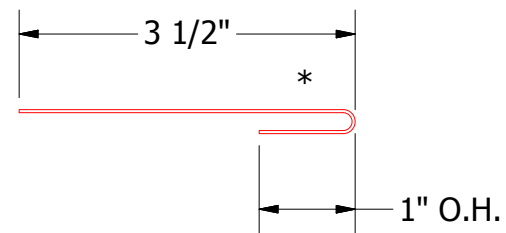
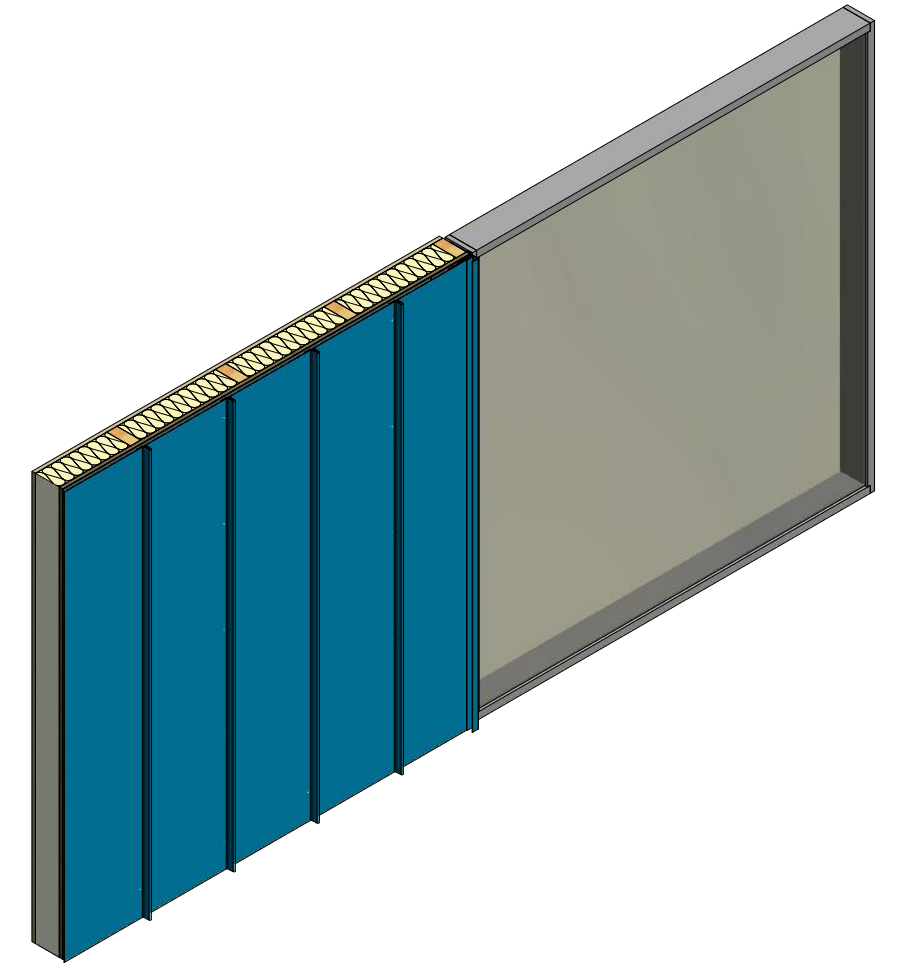
TITLE		Versa-Line Inside Corner Detail	
DWG. NO.	DR	DATE	11/29/2016
APP	DMR	DATE	
MATERIAL	SH. SIZE	SCALE	X:X

REV. NO.	DATE	DESCRIPTION OF REVISION	BY	APP

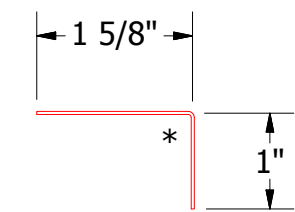
Vertical Panel



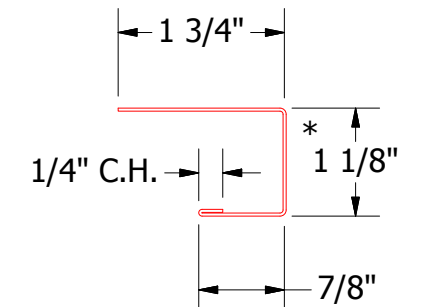
- Window
- Backer Rod and Sealant
- Angle Trim
- Utility Cleat without Return
- #10 x 1" Wafer Head Screw
- ATA-Shield
- J Channel
- Butyl Tape
- ATA-Guard
- 1/2" Plywood (min.)
- Interior Finish
- Versa-Line Panel



VSA962 - Utility Cleat without Return



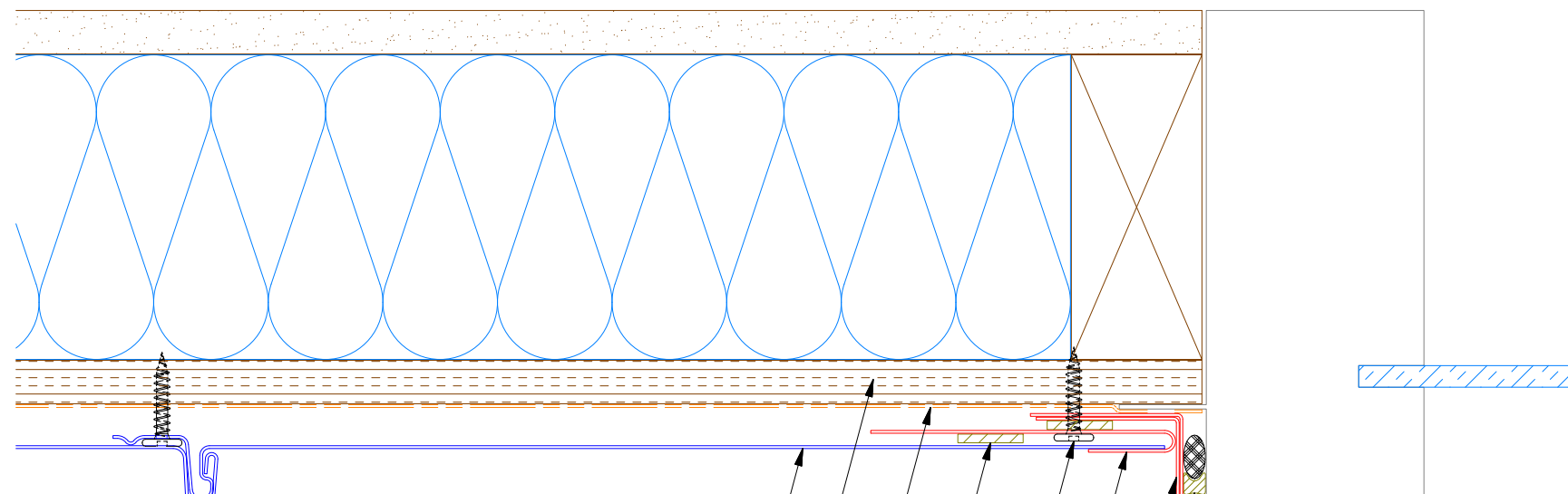
VSA680 - Angle Trim



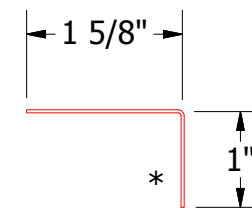
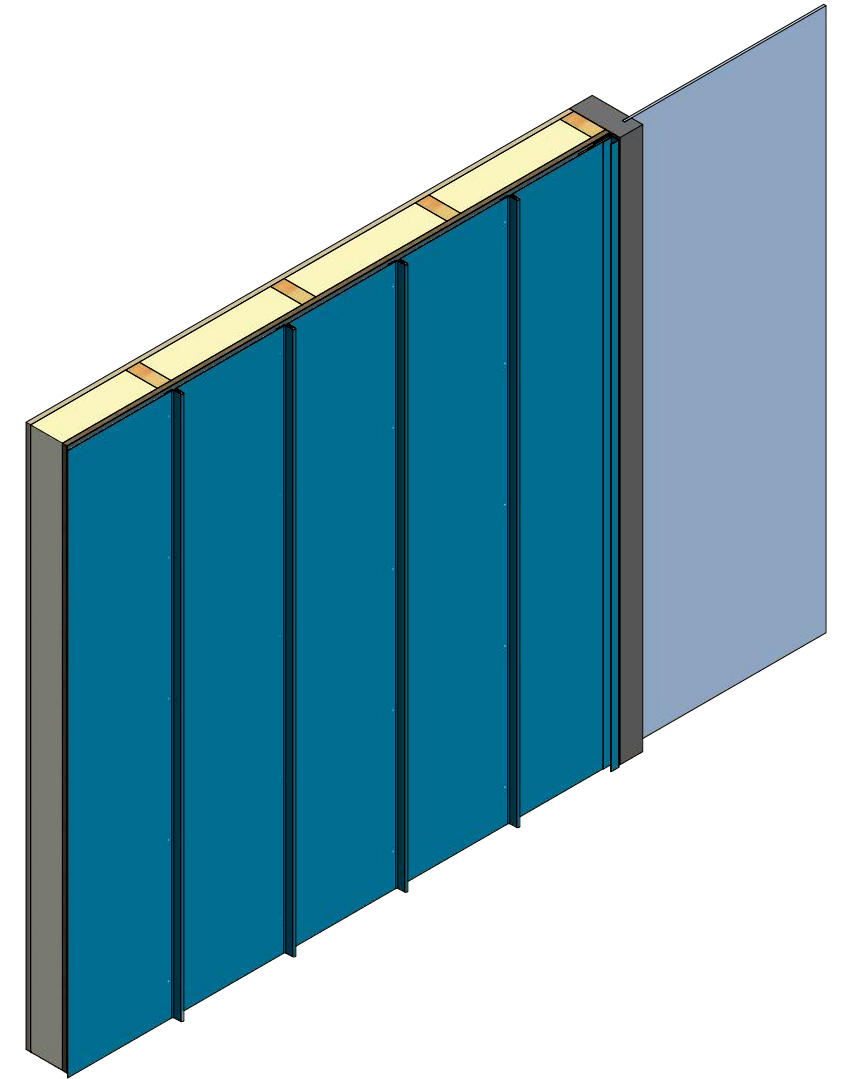
VSA118 - J Channel

ATAS ATAS INTERNATIONAL, INC
 Allentown PA
 610-395-8445
 Mesa AZ
 480-558-7210

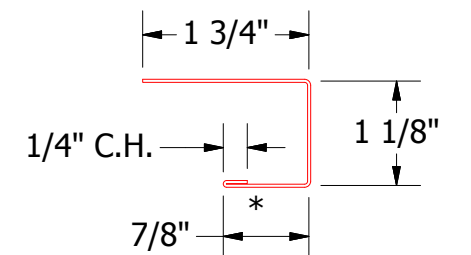
TITLE				Versa-Line Jamb Existing Window Detail			
DWG. NO.		DR		DATE		7/20/18	
		MBP					
MATERIAL		APP		DATE			
REV. NO.		DATE		SH. SIZE		SCALE	
		DESCRIPTION OF REVISION		BY		APP	
				B		X:X	



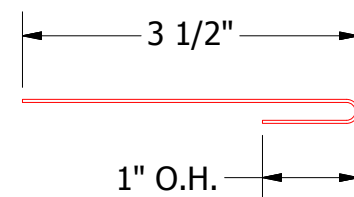
- Versa-Line Panel
- Plywood Substrate
- Water and Air Resistive Barrier
- Butyl Sealant Tape
- #10 x 1" Wafer Head Screw
- Utility Cleat without Return
- J Channel
- Angle Trim
- Backer Rod and Sealant
- Flanged Window



VSA680 - Angle Trim

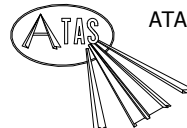


VSA118 - J Channel

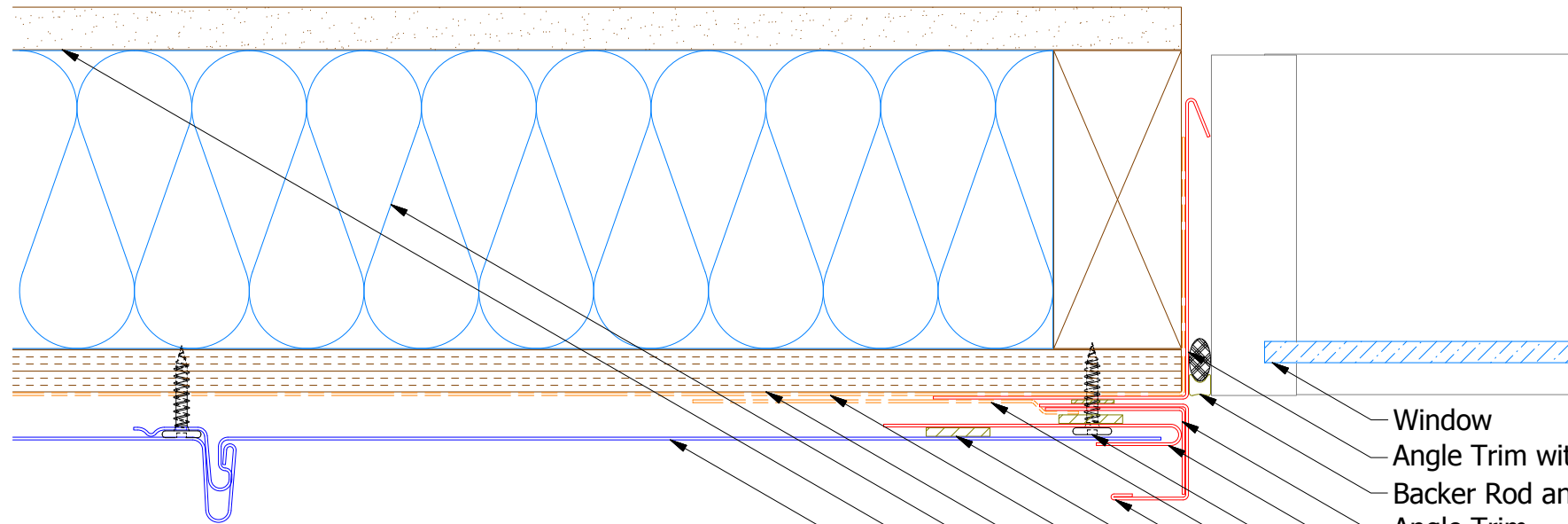


VSA962 - Utility Cleat without Return

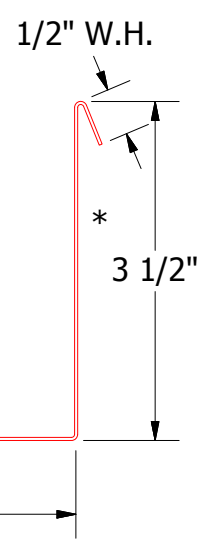
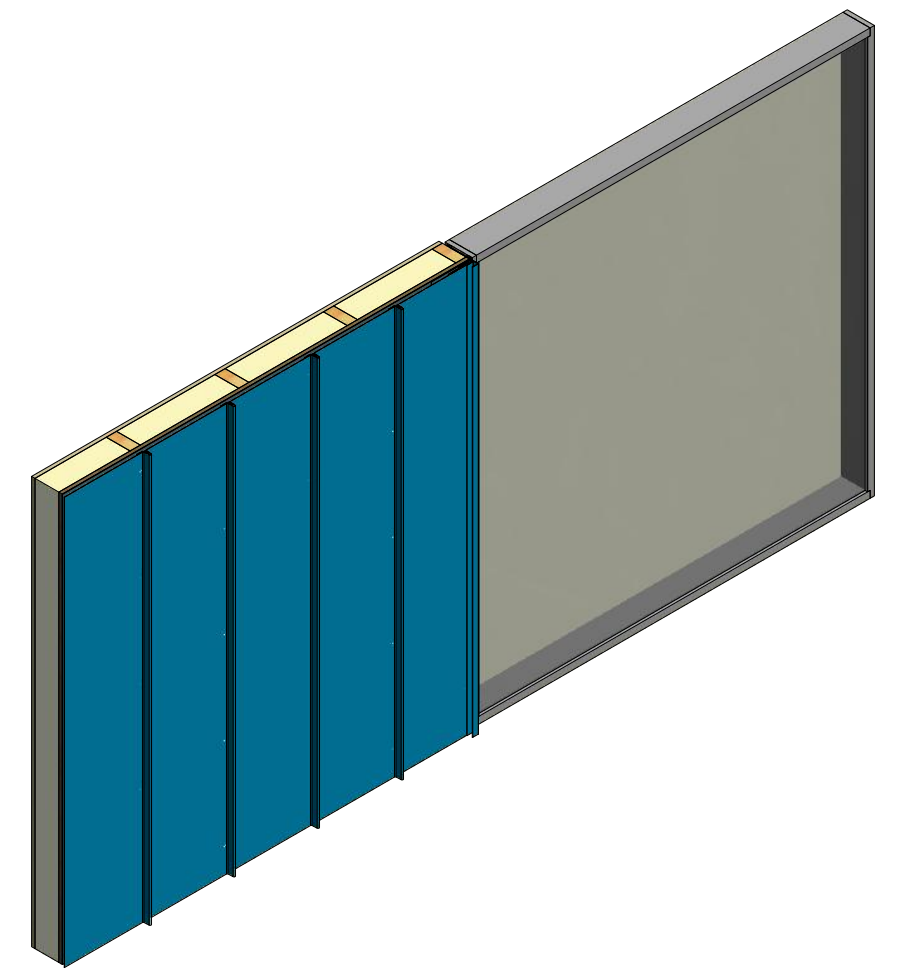
Note: * denotes color side.

 ATAS INTERNATIONAL, INC Allentown PA 610-395-8445 Mesa AZ 480-558-7210		TITLE Versa-Line Window Flange Jamb Detail	
		DWG. NO.	DR
MATERIAL		APP	DATE
REV. NO.	DATE	DESCRIPTION OF REVISION	BY APP
		SH. SIZE	SCALE
		B	X:X

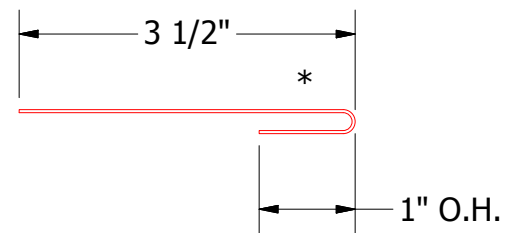
Vertical Panel



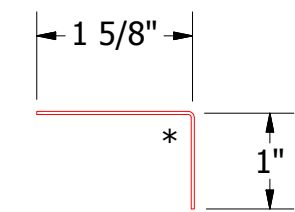
- Window
- Angle Trim with Return
- Backer Rod and Sealant
- Angle Trim
- Utility Cleat without Return
- #10 x 1" Wafer Head Screw
- Membrane Strip over J Channel and Angle Trim
- J Channel
- Butyl Tape
- Water and Air Resistive Barrier
- 1/2" Plywood (min.)
- Insulation
- Interior Finish
- Versa-Line Panel



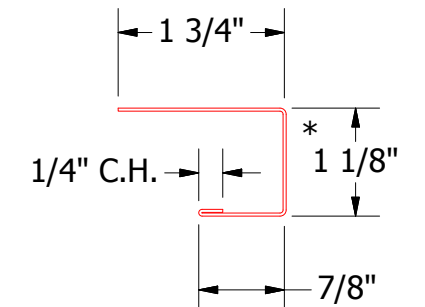
VSA683 - Angle Trim with Return



VSA962 - Utility Cleat without Return



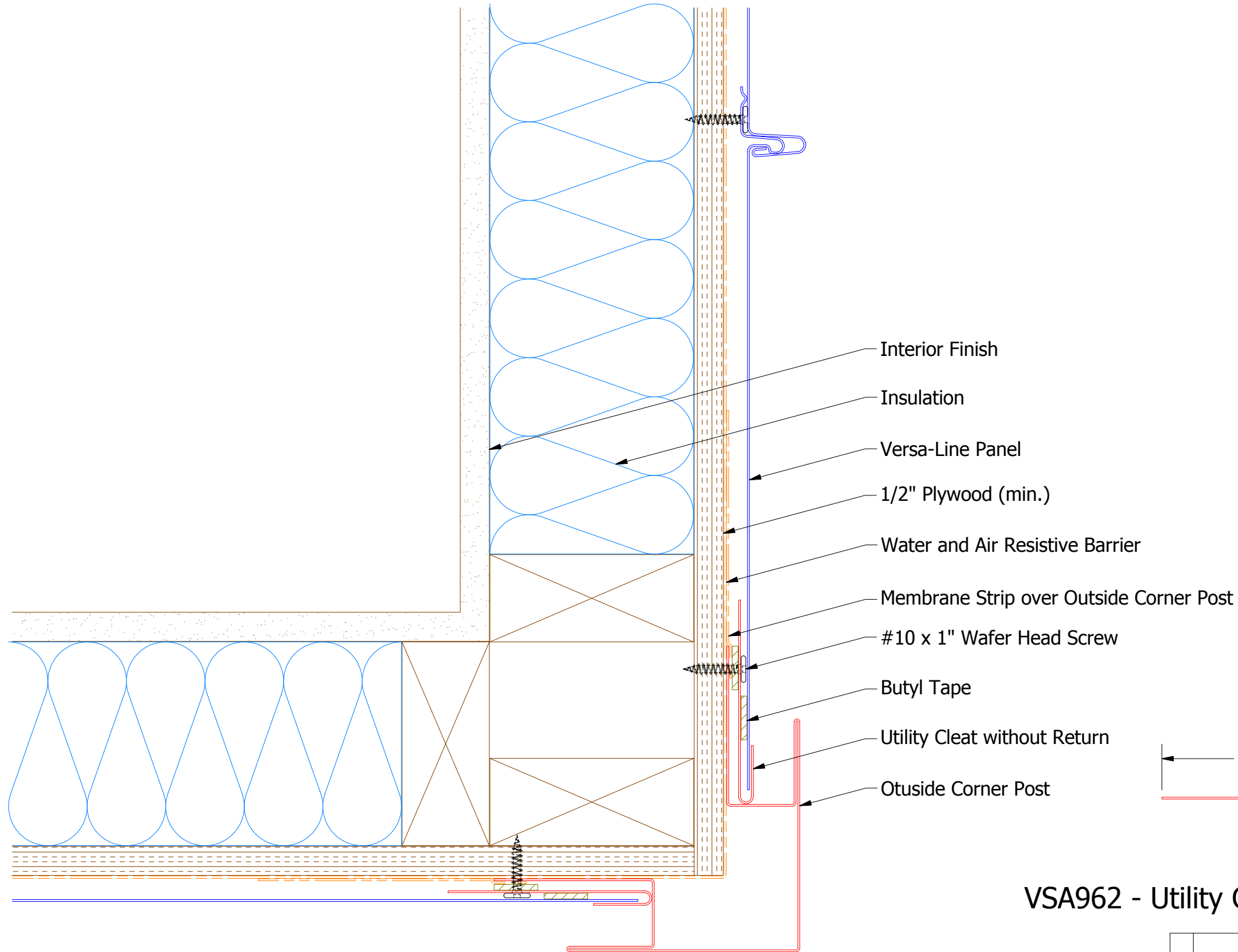
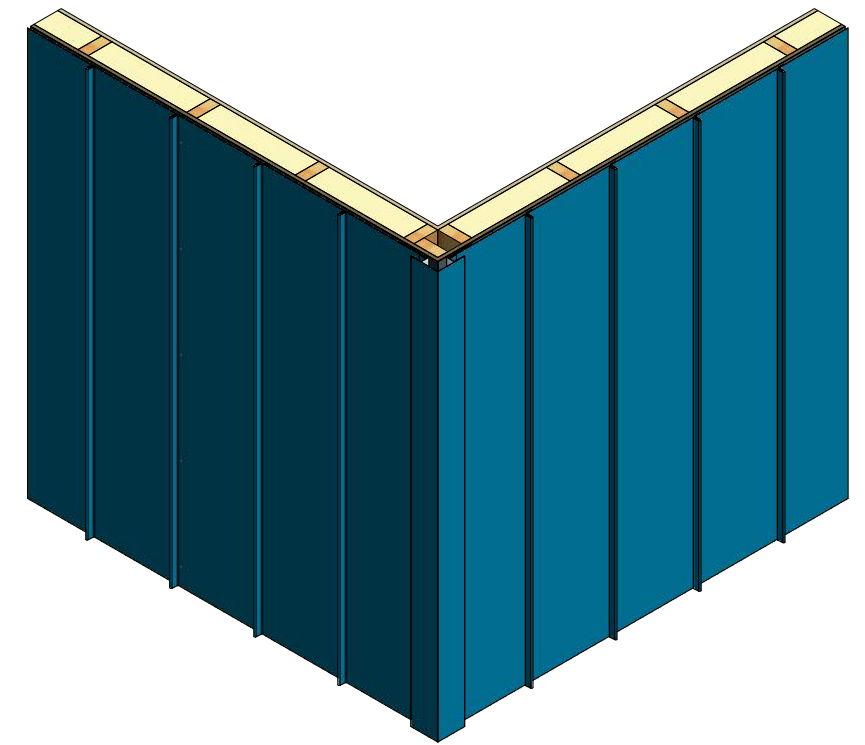
VSA680 - Angle Trim



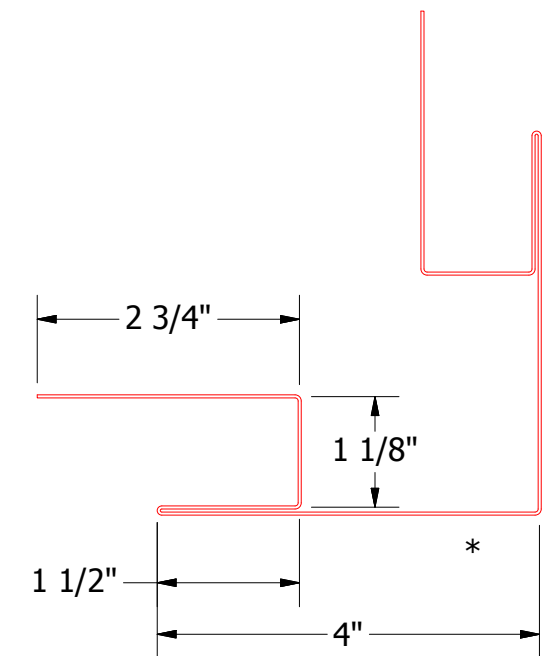
VSA118 - J Channel

		ATAS INTERNATIONAL, INC Allentown PA 610-395-8445 Mesa AZ 480-558-7210	
		TITLE Versa-Line Jamb Detail	
DWG. NO.		DR	DATE
APP		DMR	11/29/2016
MATERIAL		APP	DATE
REV. NO.		SH. SIZE	B
DATE		SCALE	X:X
DESCRIPTION OF REVISION			
BY			
APP			

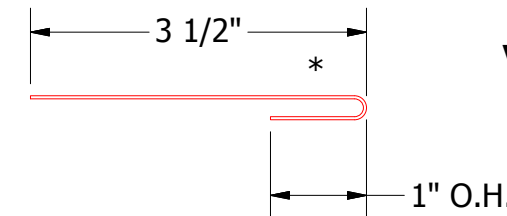
Vertical Panel



- Interior Finish
- Insulation
- Versa-Line Panel
- 1/2" Plywood (min.)
- Water and Air Resistive Barrier
- Membrane Strip over Outside Corner Post
- #10 x 1" Wafer Head Screw
- Butyl Tape
- Utility Cleat without Return
- Outside Corner Post

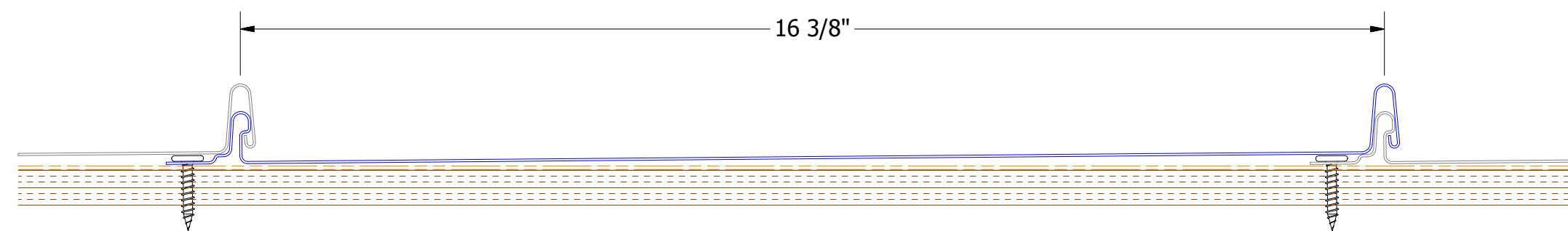
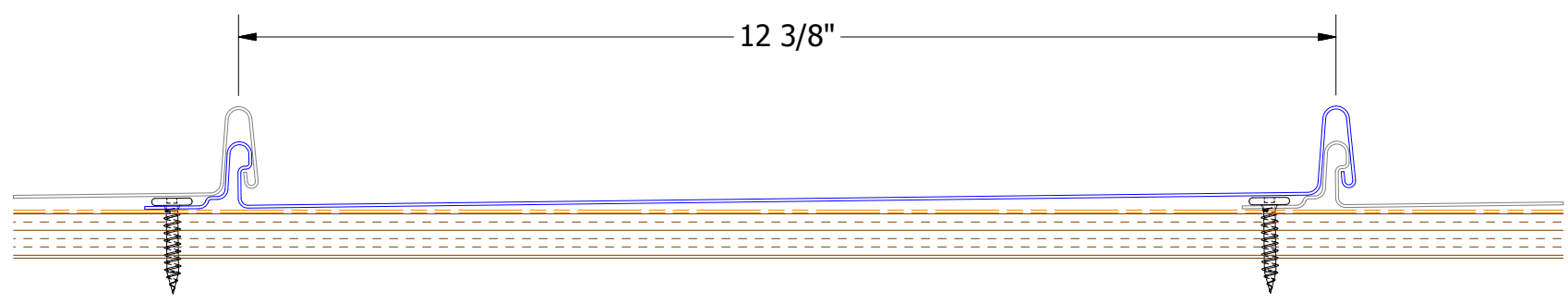
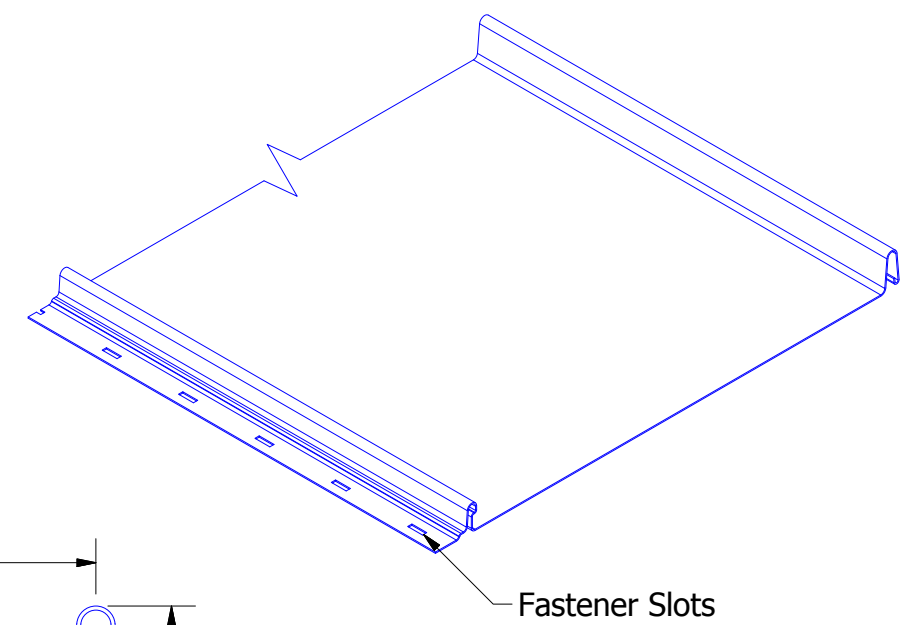
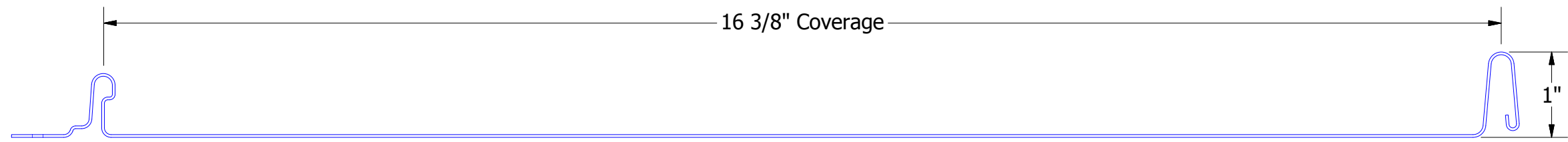
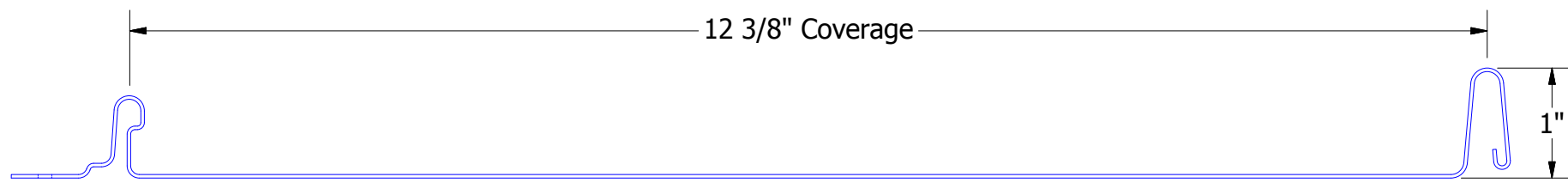


VSA602 - Outside Corner Post



VSA962 - Utility Cleat without Return

 ATAS INTERNATIONAL, INC Allentown PA 610-395-8445 Mesa AZ 480-558-7210		TITLE Versa-Line Outside Corner Detail	
		DWG. NO. DR DMR APP DATE	DATE 11/30/2016
REV. NO. DATE DESCRIPTION OF REVISION BY APP	MATERIAL	SH. SIZE B	SCALE X:X

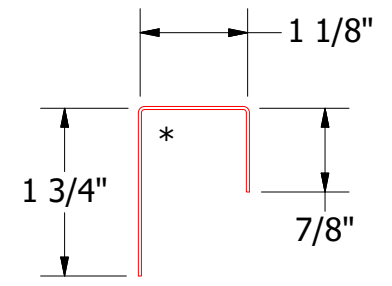
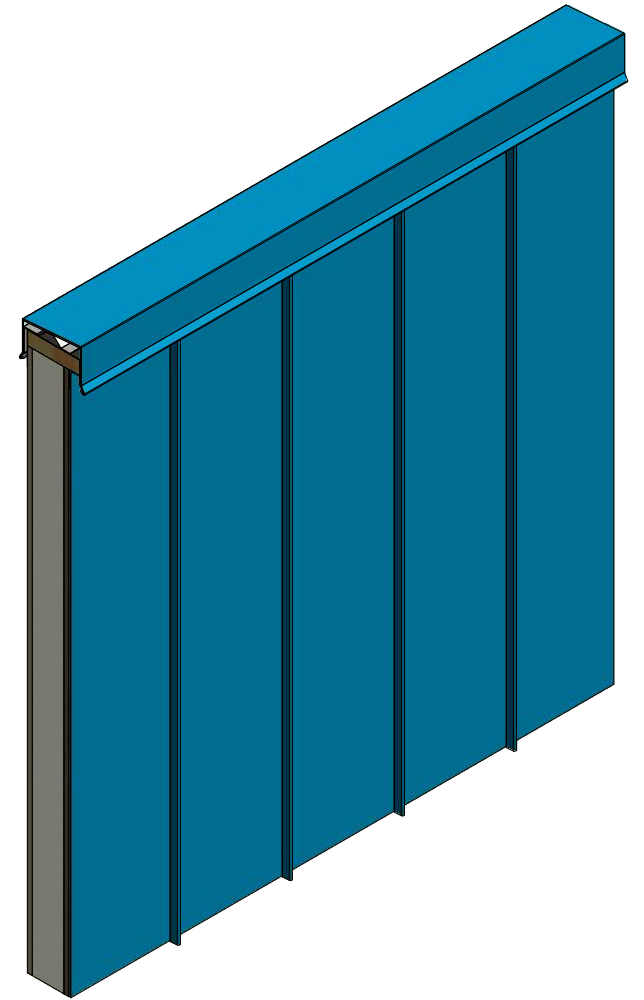
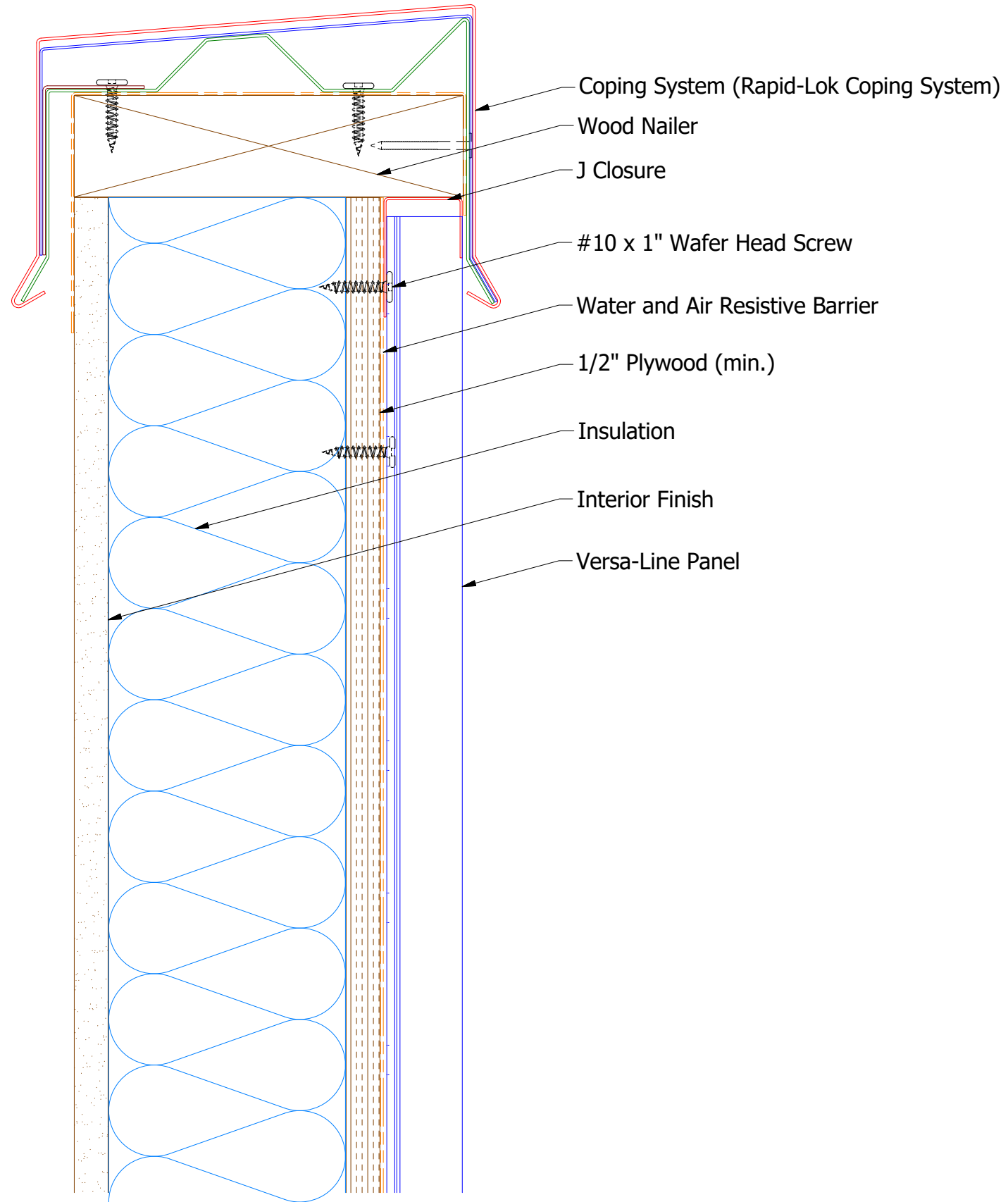


ATAS INTERNATIONAL, INC
 Allentown PA
 610-395-8445
 Mesa AZ
 480-558-7210

TITLE		Versa Line Panel Profile Detail	
DWG. NO.	DR	DATE	5/10/2016
	KRK	APP	DATE
MATERIAL	SH. SIZE	SCALE	X:X
	B		

REV. NO.	DATE	DESCRIPTION OF REVISION	BY	APP

Vertical Panel



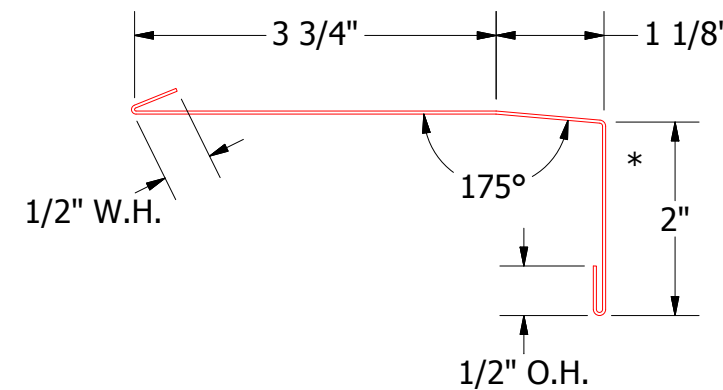
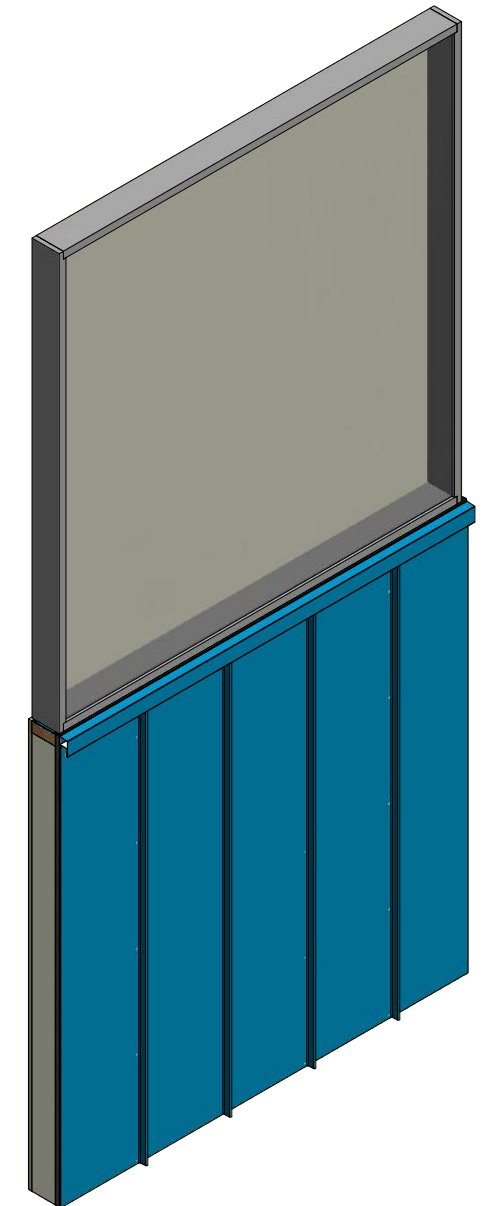
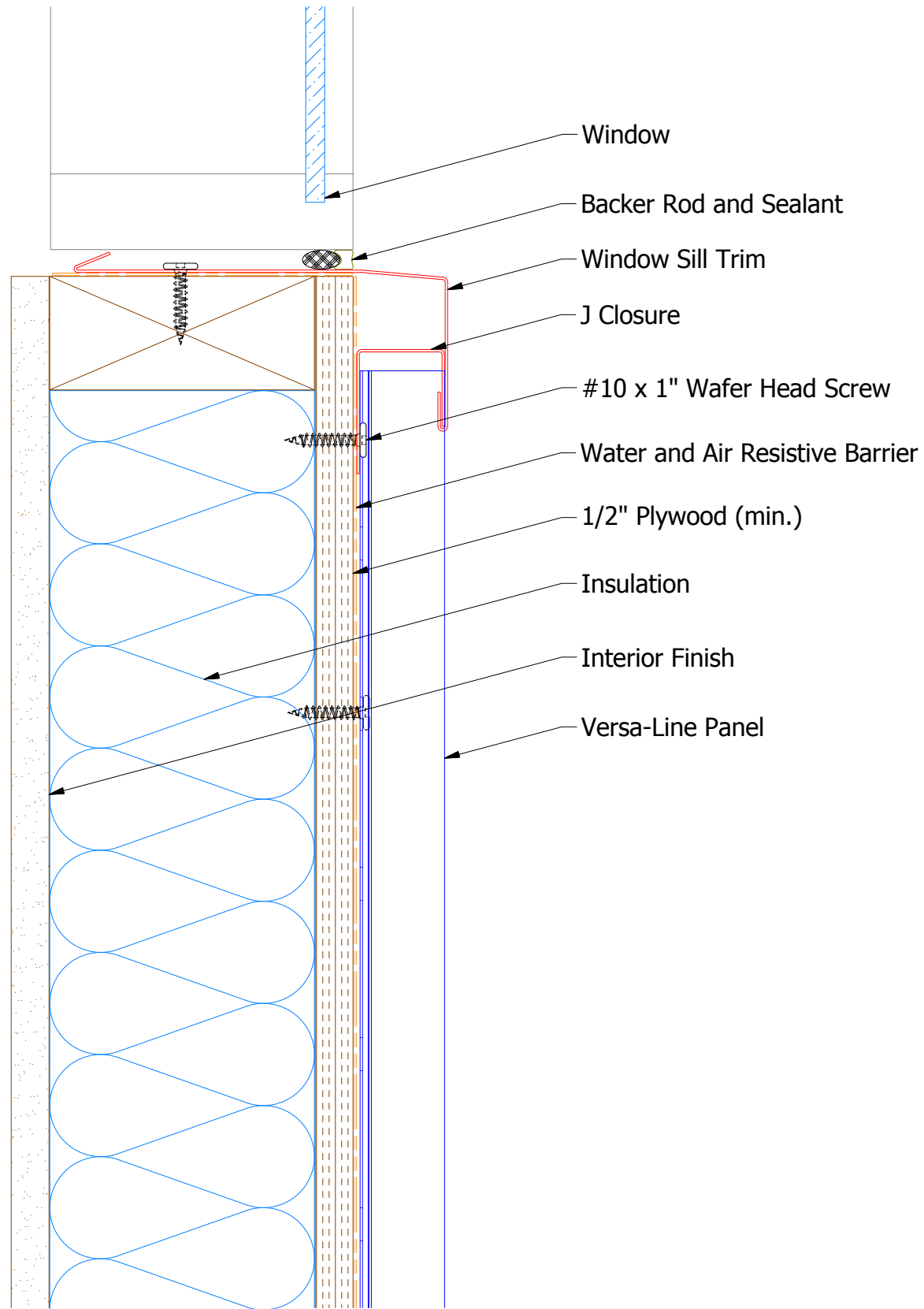
VSA270 - J Closure


ATAS INTERNATIONAL, INC
 Allentown PA
 610-395-8445
 Mesa AZ
 480-558-7210

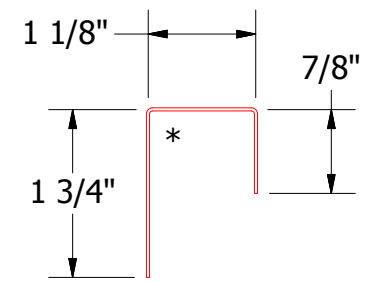
TITLE		Versa-Line Top of Wall Detail	
DWG. NO.	DR	DATE	11/30/2016
	DMR	DATE	
MATERIAL	APP	SH. SIZE	B
		SCALE	X:X

REV. NO.	DATE	DESCRIPTION OF REVISION	BY	APP

Vertical Panel



VSA670 - Window Sill Trim



VSA270 - J Closure

ATAS ATAS INTERNATIONAL, INC
 Allentown PA
 610-395-8445
 Mesa AZ
 480-558-7210

REV. NO.				DATE				DESCRIPTION OF REVISION				BY		APP	
DWG. NO.				DR				DATE				SH. SIZE		SCALE	
MATERIAL				APP				DATE				B		X:X	

TITLE
Versa-Line Window Sill Detail

DATE 12/5/2016
 DMR
 SCALE X:X

