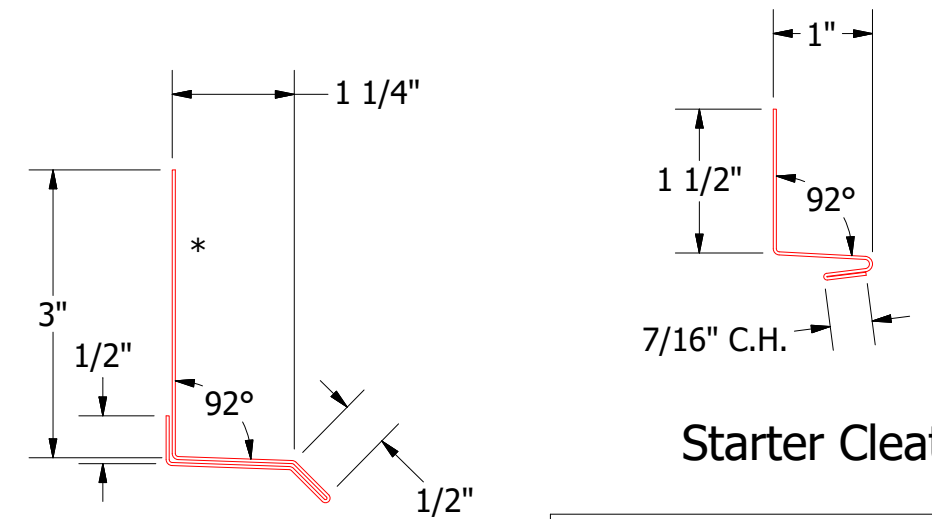
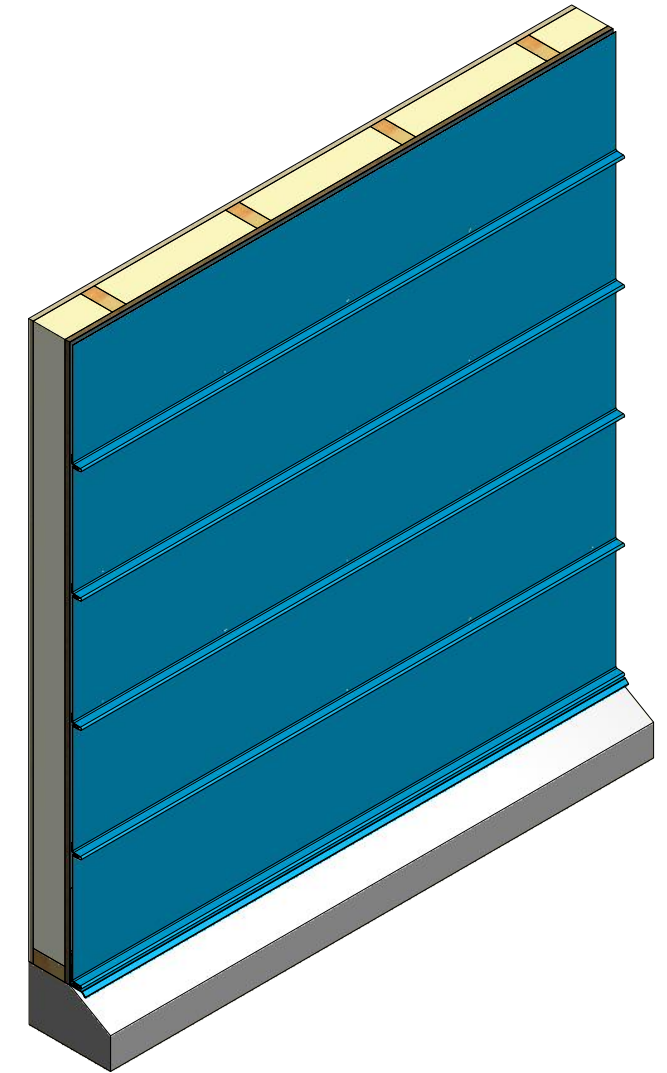
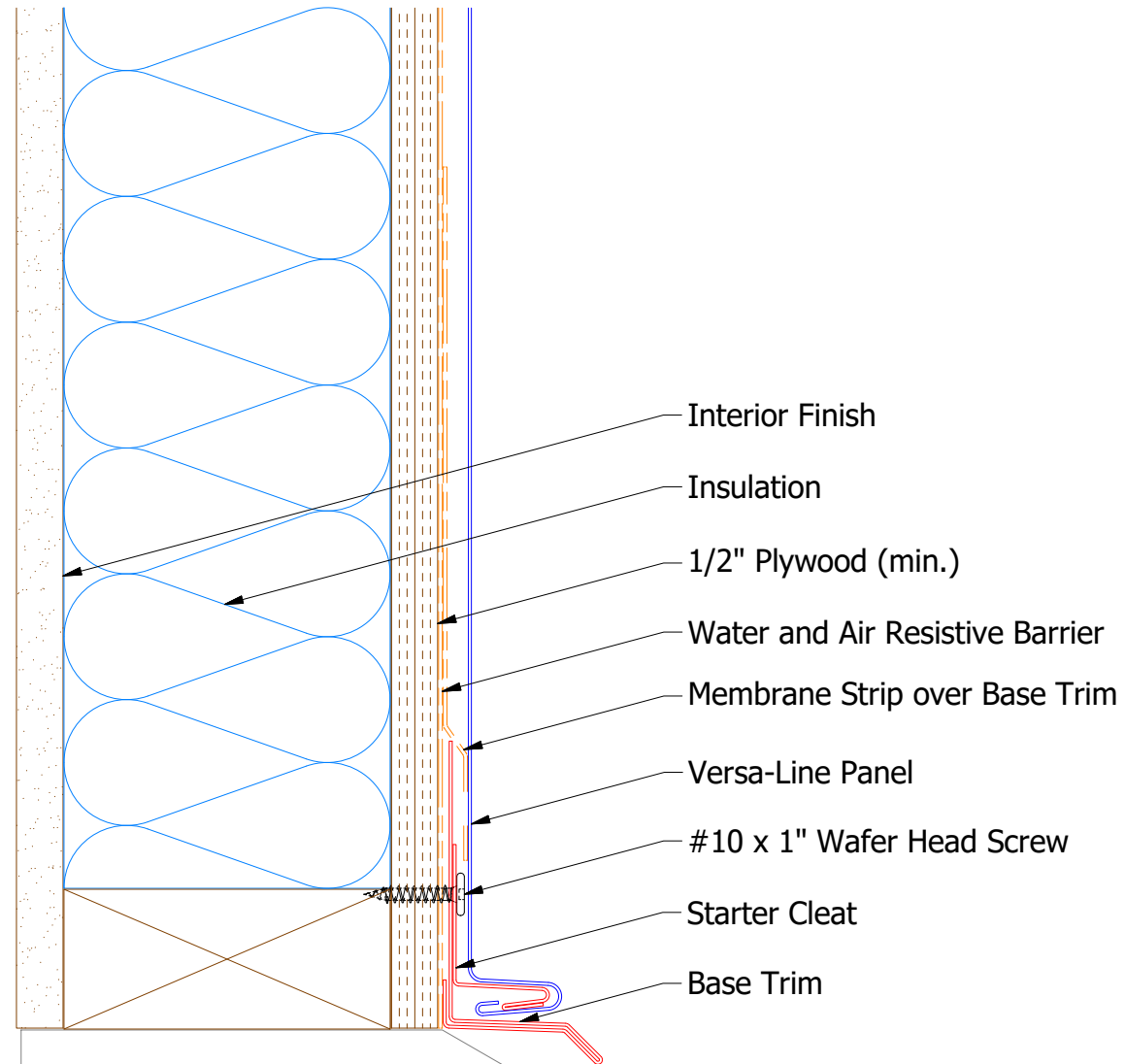


# Horizontal Panel



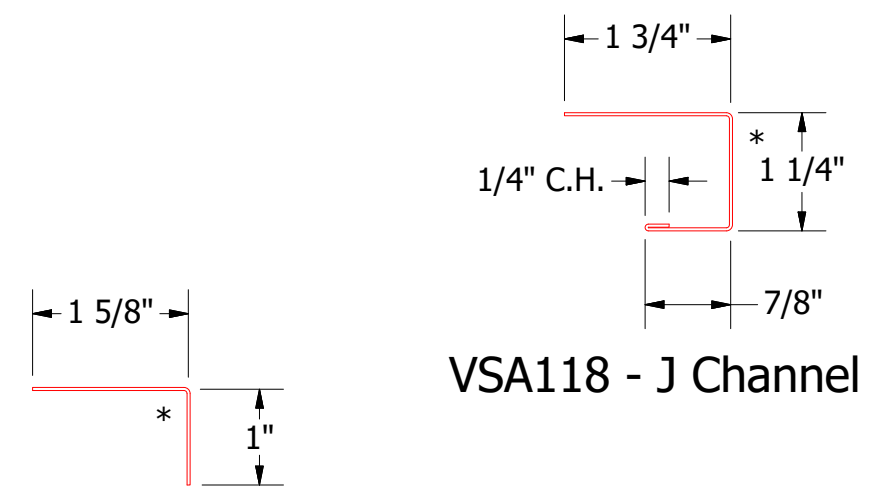
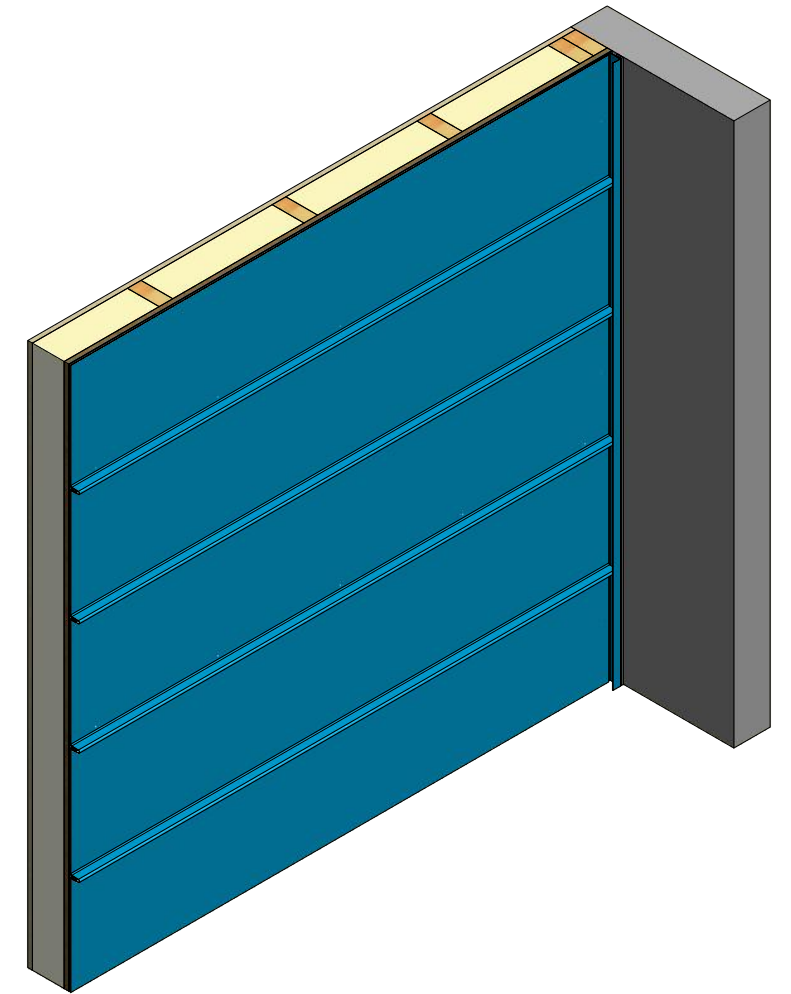
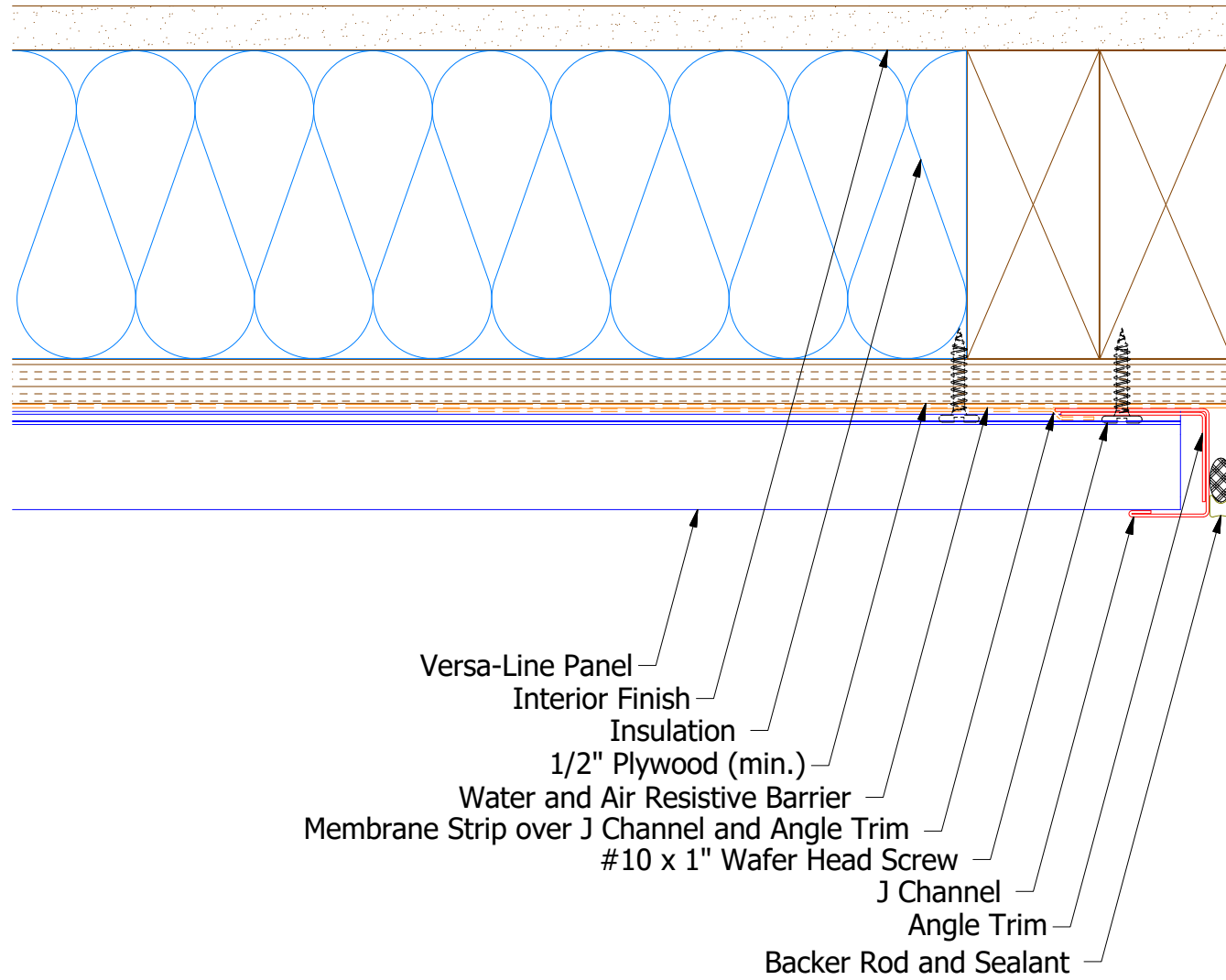
VSA661 - Base Trim

Starter Cleat

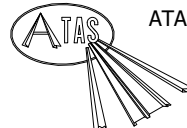
**ATAS** ATAS INTERNATIONAL, INC  
 Allentown PA  
 610-395-8445  
 Mesa AZ  
 480-558-7210

REV. NO.		DATE	DESCRIPTION OF REVISION	BY	APP	TITLE <b>Versa-Line Base Detail</b>	
DWG. NO.		DR	DMR	DATE	11/23/2016	SCALE X:X	
MATERIAL		SH. SIZE	B				

# Horizontal Panel



VSA680 - Angle Trim

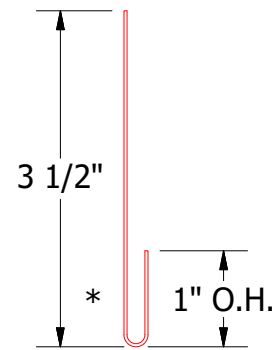
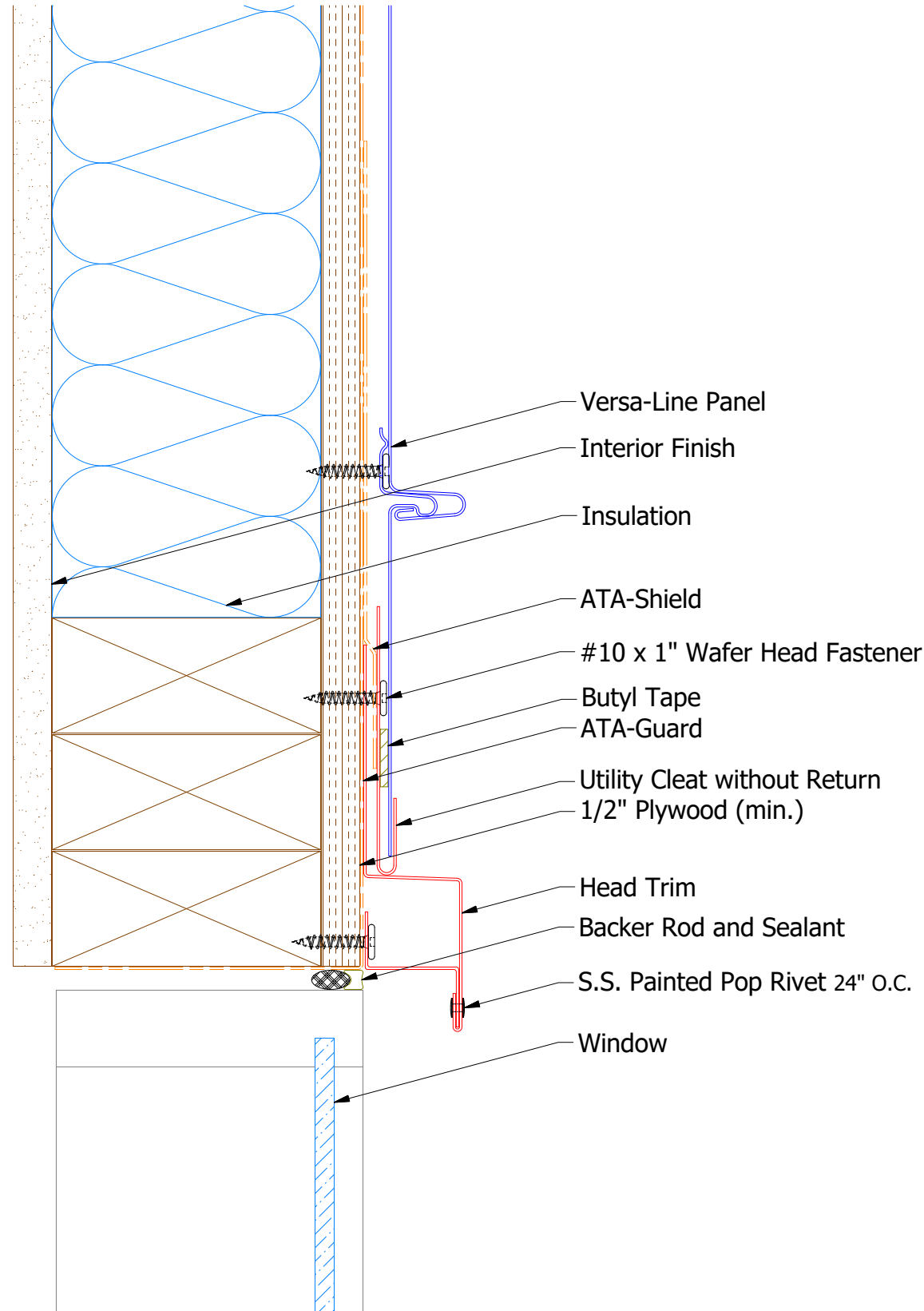

**ATAS INTERNATIONAL, INC**  
 Allentown PA  
 610-395-8445  
 Mesa AZ  
 480-558-7210

**TITLE**  
 Versa-Line Endwall Detail

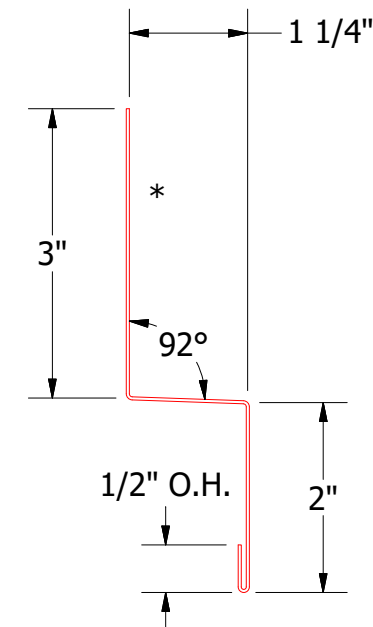
DWG. NO.	DR	DATE
	DMR	11/28/2016
MATERIAL	APP	DATE
	SH. SIZE	SCALE
	B	X:X

REV. NO.	DATE	DESCRIPTION OF REVISION	BY	APP

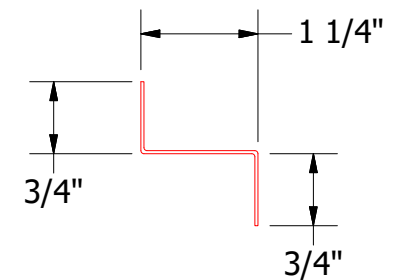
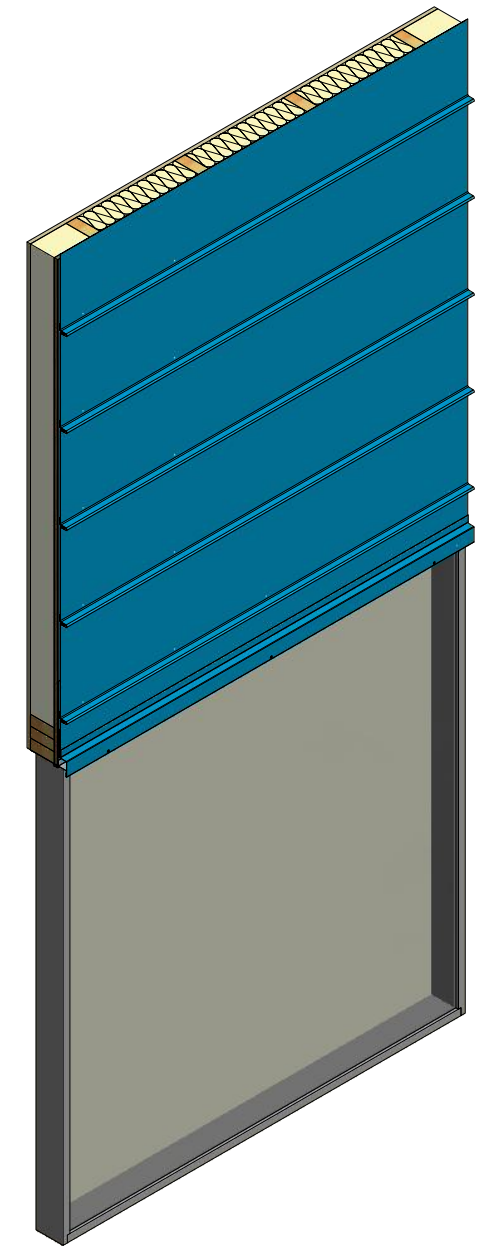
# Horizontal Panel



VSA962 - Utility Cleat without Return



VSA550 - Head Trim



Z Closure

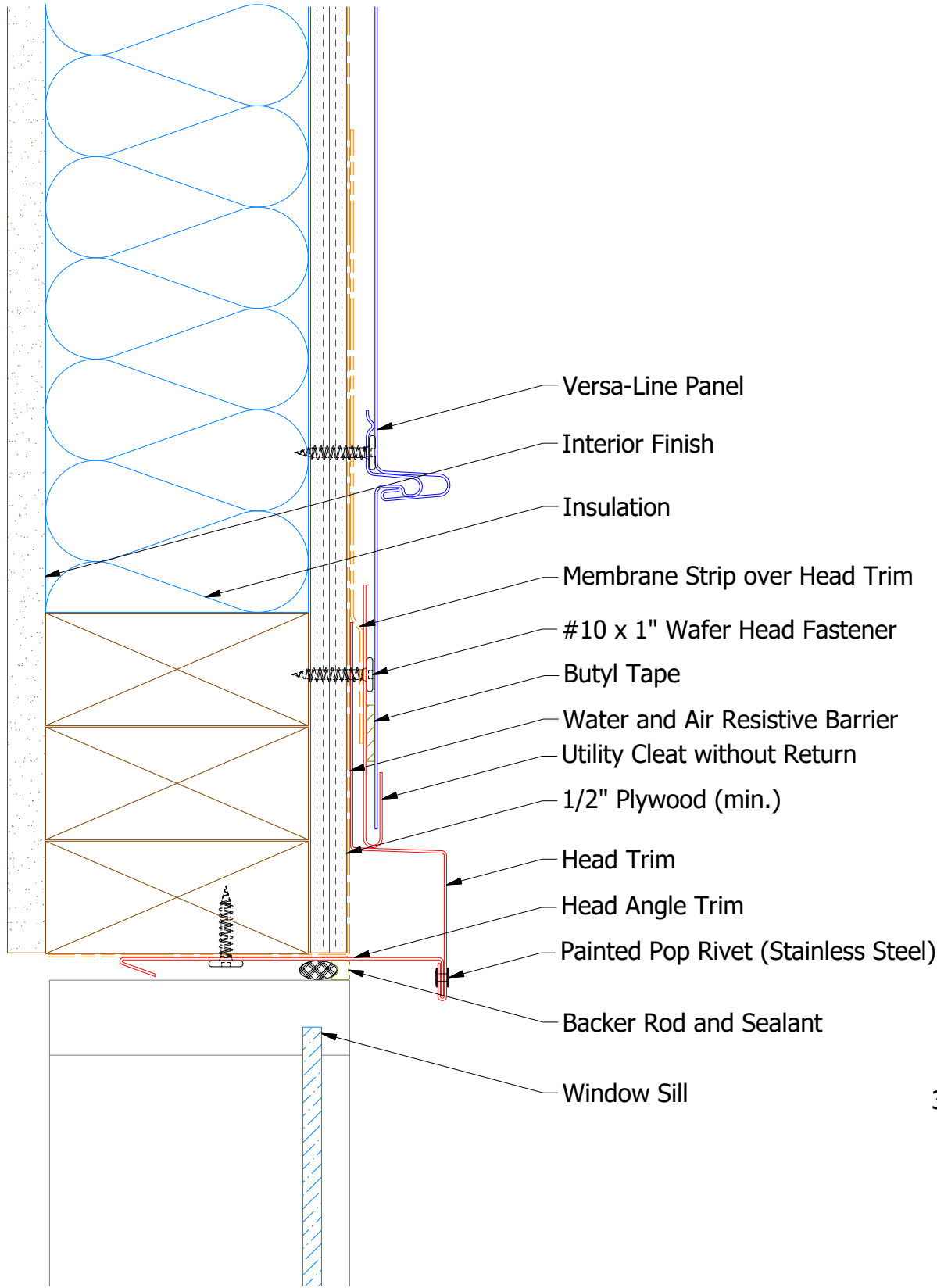


ATAS INTERNATIONAL, INC  
 Allentown PA  
 610-395-8445  
 Mesa AZ  
 480-558-7210

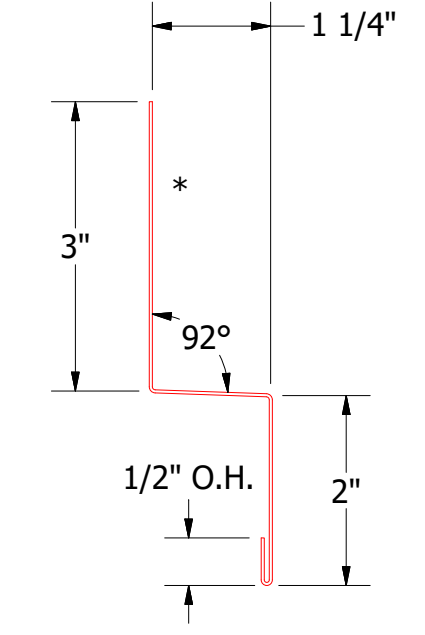
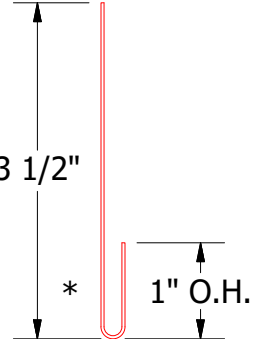
TITLE				Versa-Line Head Existing Window Detail	
DWG. NO.	DR	MBP	DATE	7/20/18	
MATERIAL	APP		DATE		
REV. NO.	DATE	DESCRIPTION OF REVISION	BY	APP	SH. SIZE B SCALE X:X



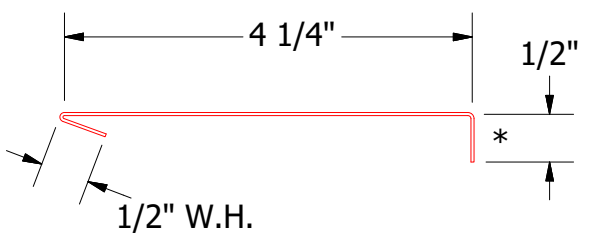
# Horizontal Panel



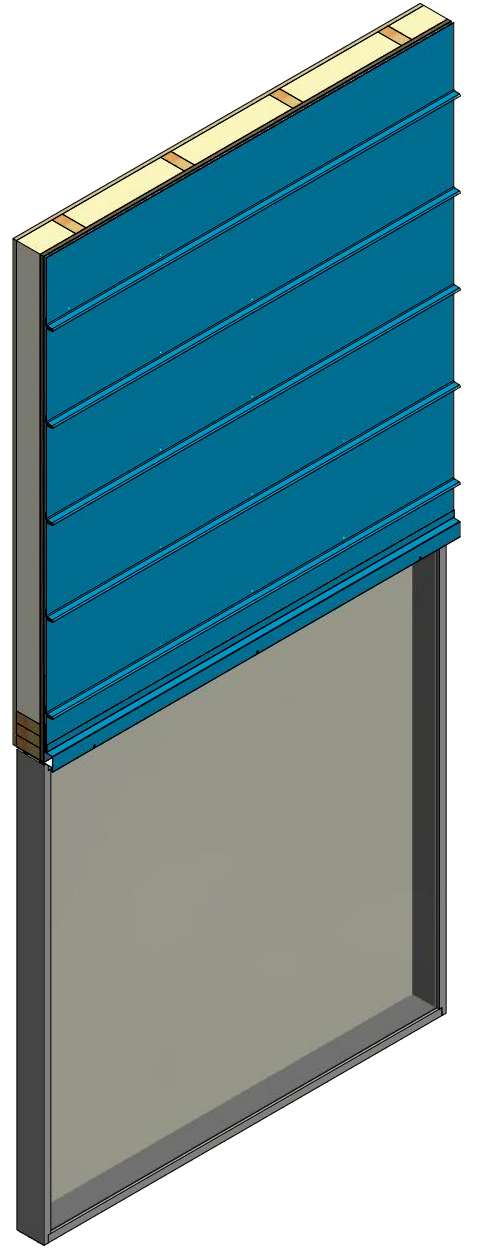
VSA962 - Utility Cleat without Return



VSA550 - Head Trim



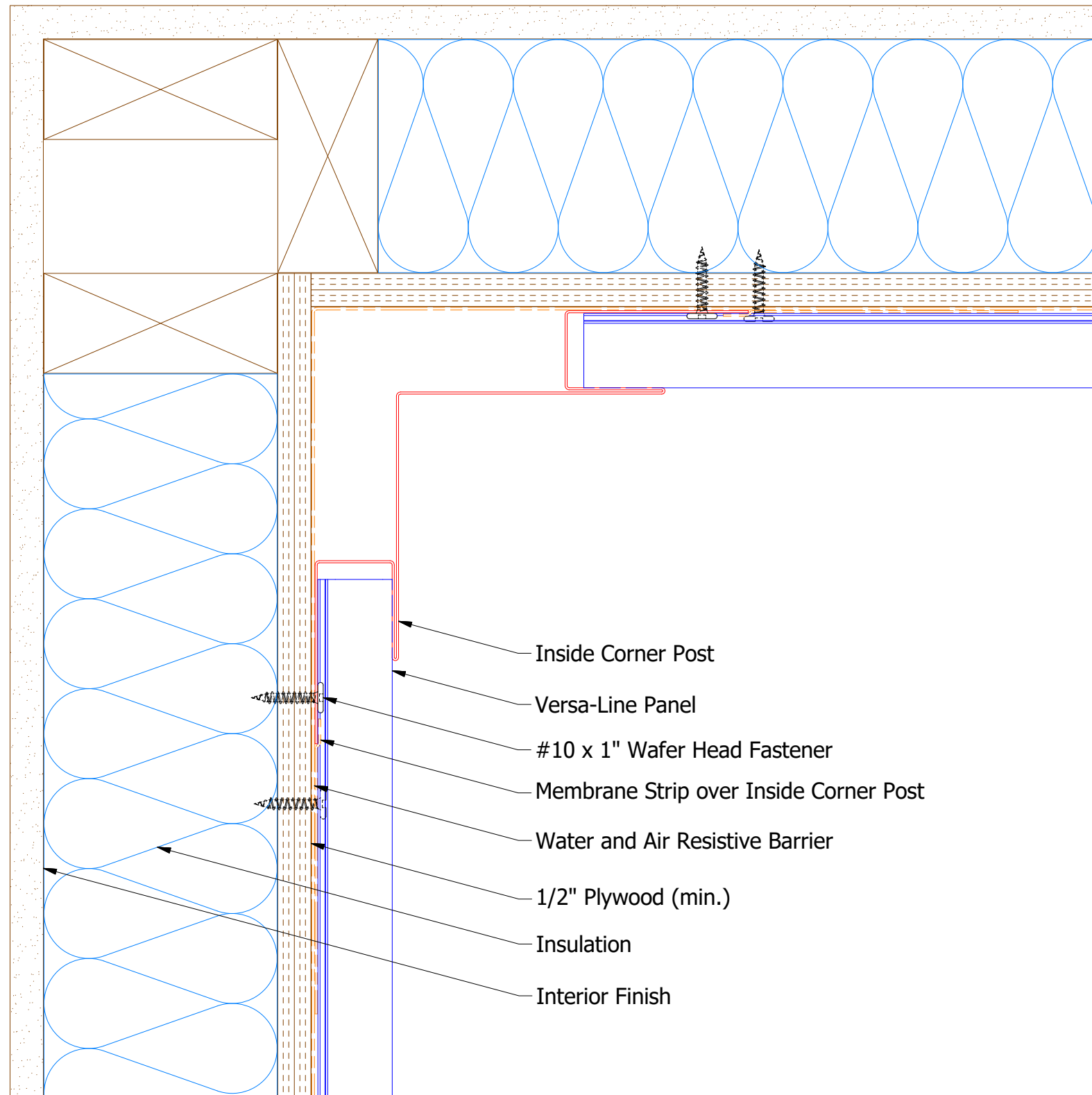
VSA690 - Head Angle Trim



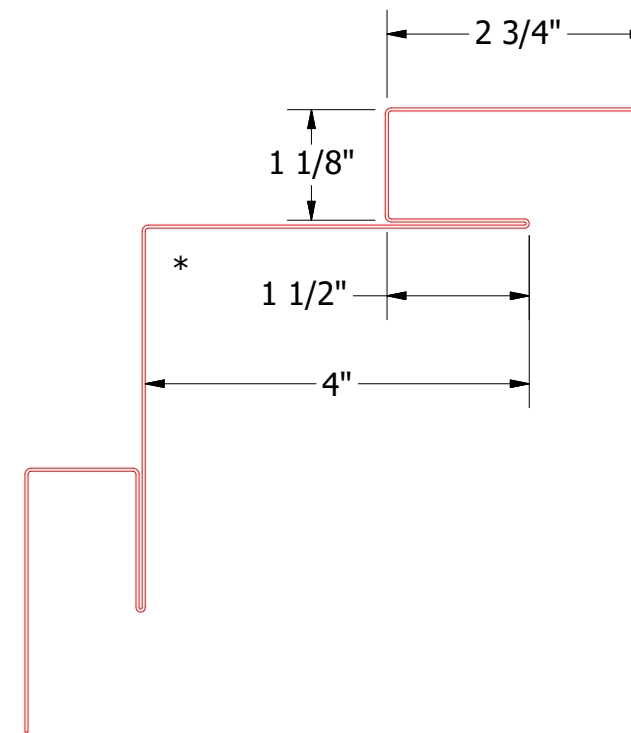
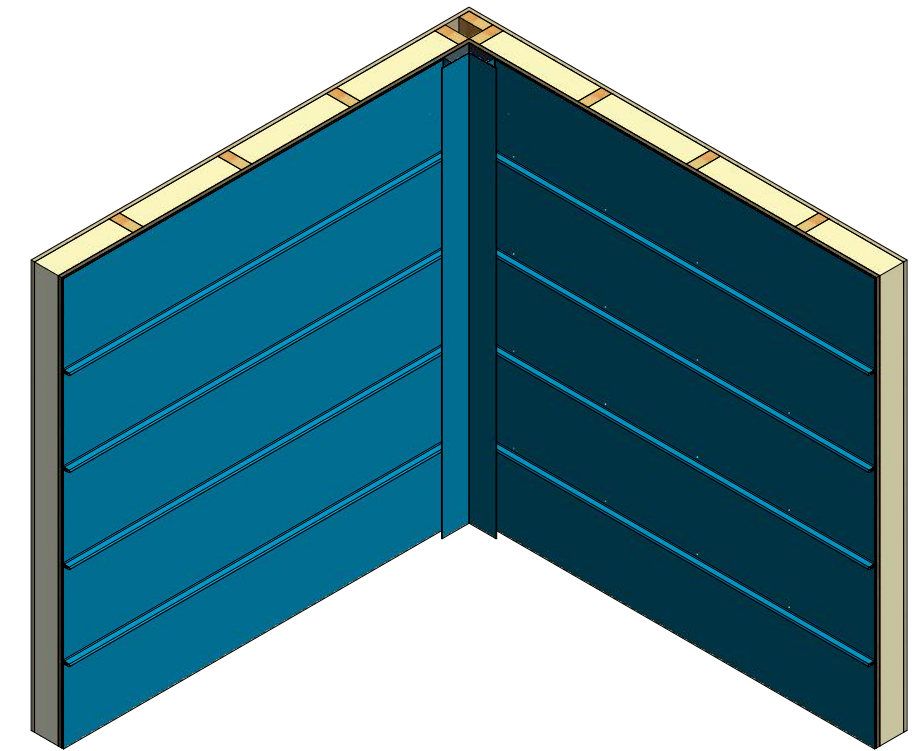

**ATAS INTERNATIONAL, INC**  
 Allentown PA  
 610-395-8445  
 Mesa AZ  
 480-558-7210

REV. NO.		DATE	DESCRIPTION OF REVISION	BY	APP	TITLE		Versa-Line Head Detail	
DWG. NO.		DR	DMR	DATE	DATE	MATERIAL		SH. SIZE	B
								SCALE	X:X


# Horizontal Panel



- Inside Corner Post
- Versa-Line Panel
- #10 x 1" Wafer Head Fastener
- Membrane Strip over Inside Corner Post
- Water and Air Resistive Barrier
- 1/2" Plywood (min.)
- Insulation
- Interior Finish

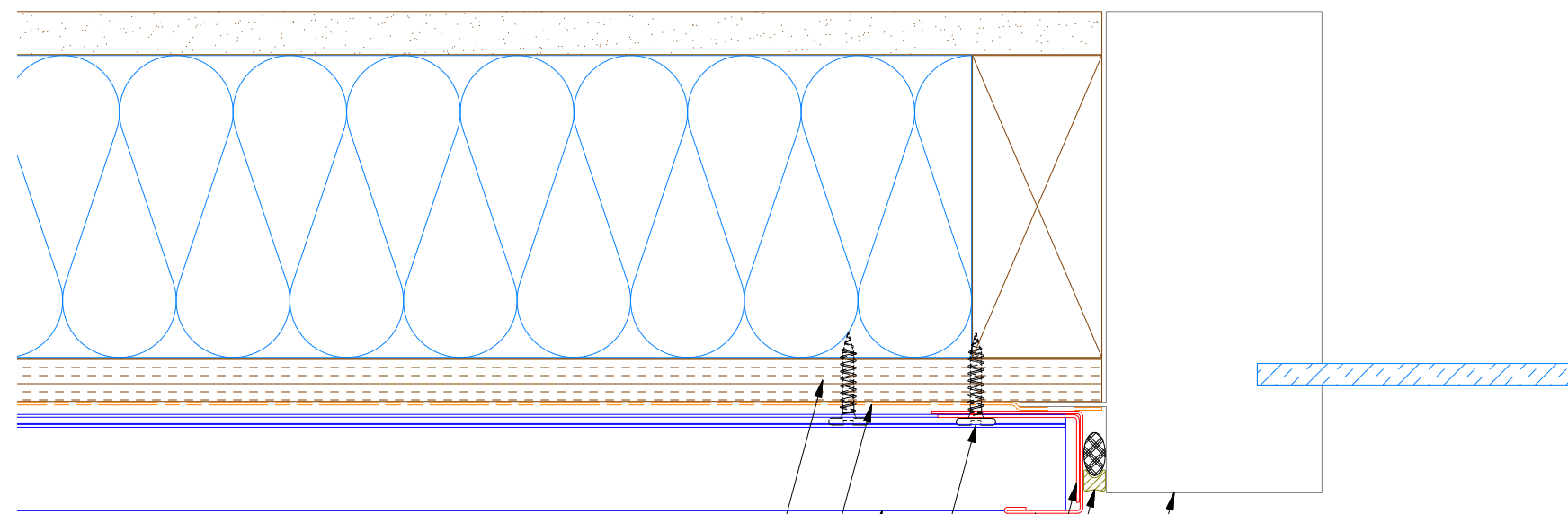


VSA601 - Inside Corner Post

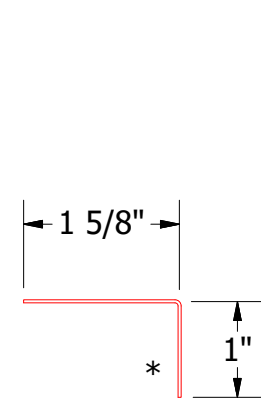
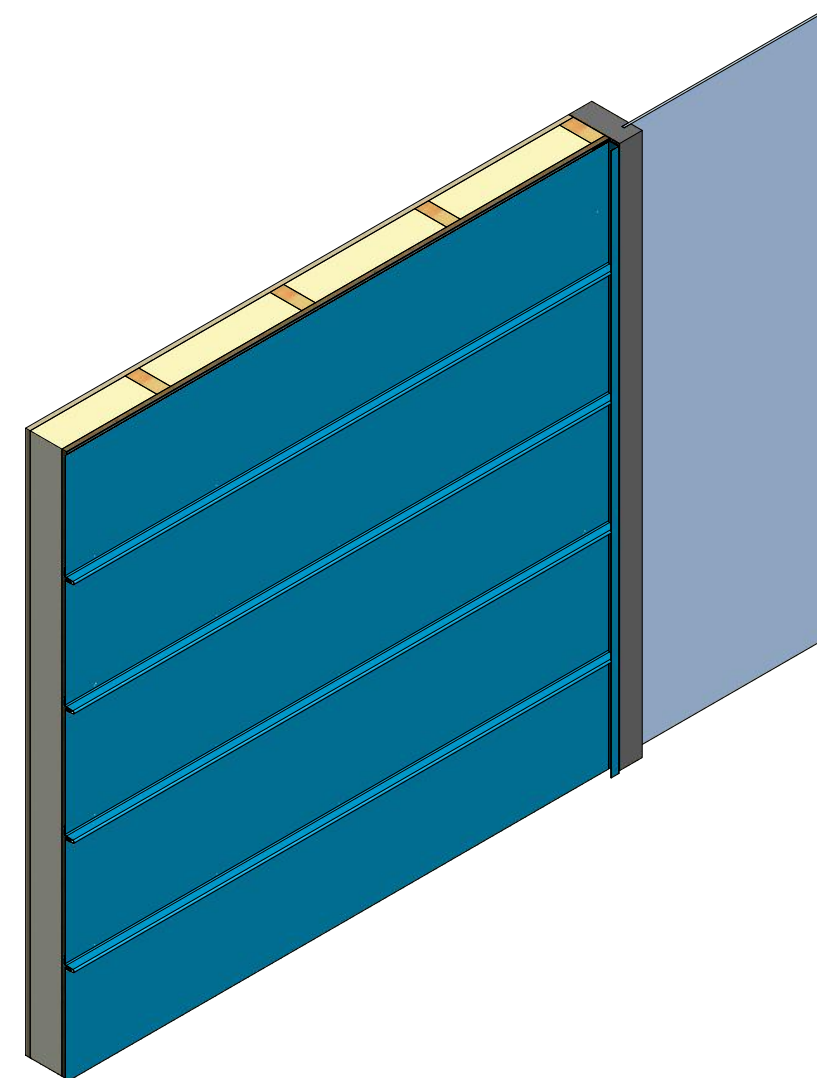

**ATAS INTERNATIONAL, INC**  
 Allentown PA  
 610-395-8445  
 Mesa AZ  
 480-558-7210

TITLE			
Versa-Line Inside Corner Detail			
DWG. NO.	DR	DATE	
	DMR	11/29/2016	
MATERIAL	APP	DATE	
	SH. SIZE	B	SCALE X:X
REV. NO.	DATE	DESCRIPTION OF REVISION	BY APP

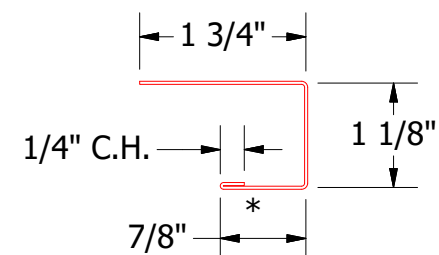




- Plywood Substrate
- Water and Air Resistive Barrier
- Versa-Line Panel
- #10 x 1" Wafer Head Screw
- J Channel
- Angle Trim
- Backer Rod and Sealant
- Flanged Window



VSA680 - Angle Trim



VSA118 - J Channel

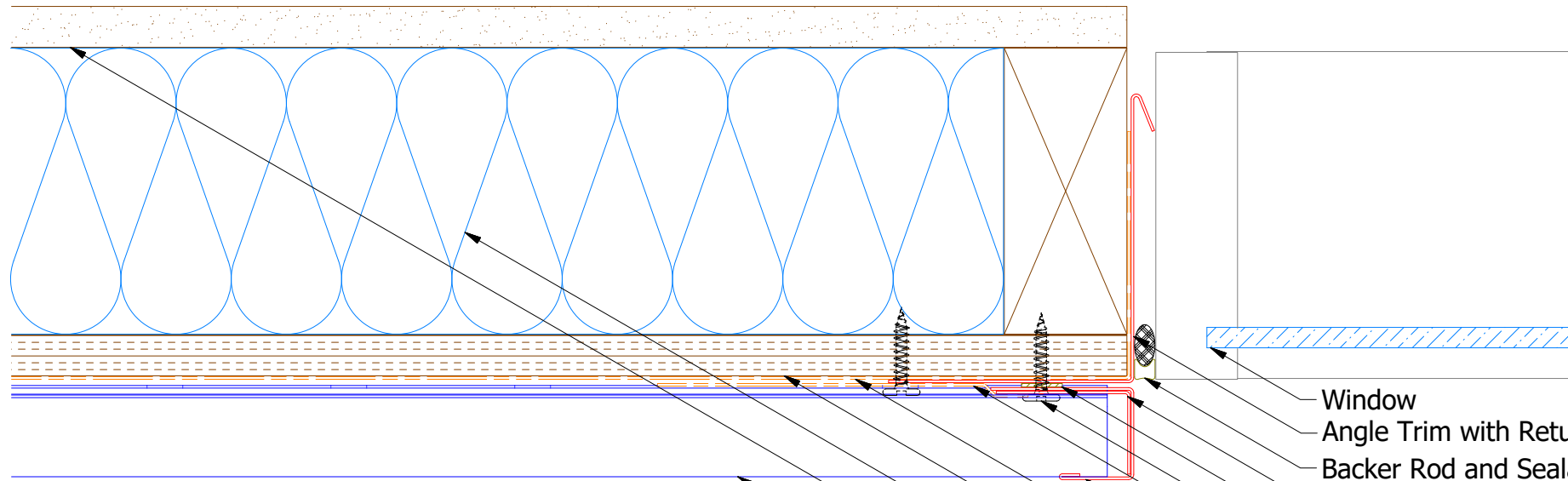
Note: \* denotes color side.

**ATAS** ATAS INTERNATIONAL, INC  
 Allentown PA  
 610-395-8445  
 Mesa AZ  
 480-558-7210

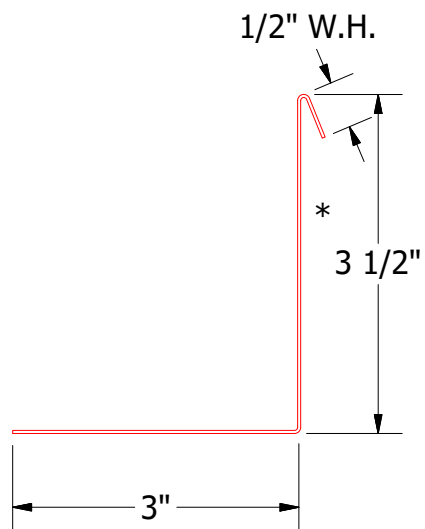
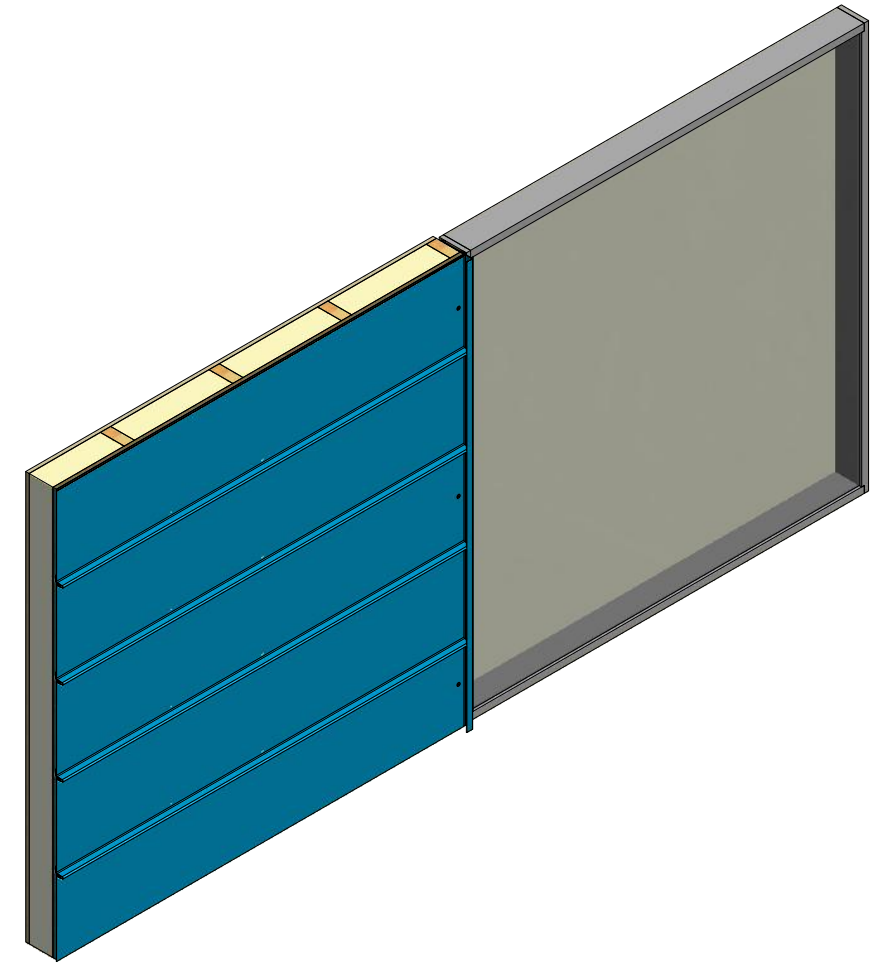
TITLE				Versa-Line Window Flange Jamb Detail			
REV. NO.		DATE		DESCRIPTION OF REVISION		BY APP	
DWG. NO.		DR		DATE		DATE	
MATERIAL		APP		SH. SIZE		SCALE	
		KRK		B		X:X	
		12/14/2018					



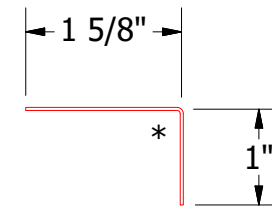
# Horizontal Panel



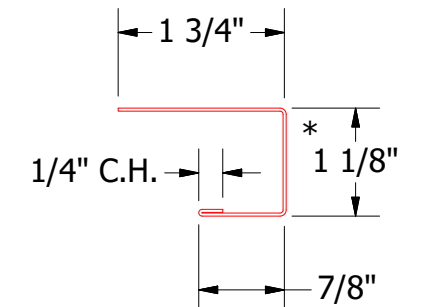
- Window
- Angle Trim with Return
- Backer Rod and Sealant
- Angle Trim
- Butyl Tape
- #10 x 1" Wafer Head Screw
- Membrane Strip over J Channel and Angle Trim
- J Channel
- Water and Air Resistive Barrier
- 1/2" Plywood (min.)
- Insulation
- Interior Finish
- Versa-Line Panel



VSA683 - Angle Trim with Return



VSA680 - Angle Trim

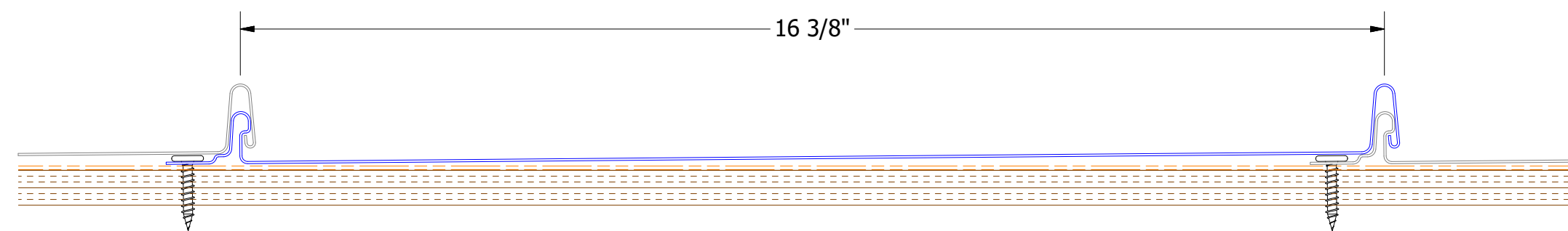
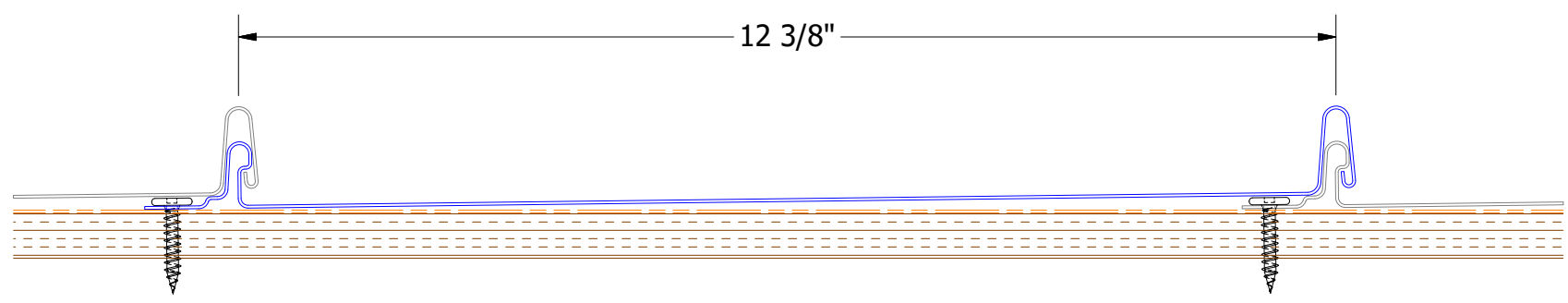
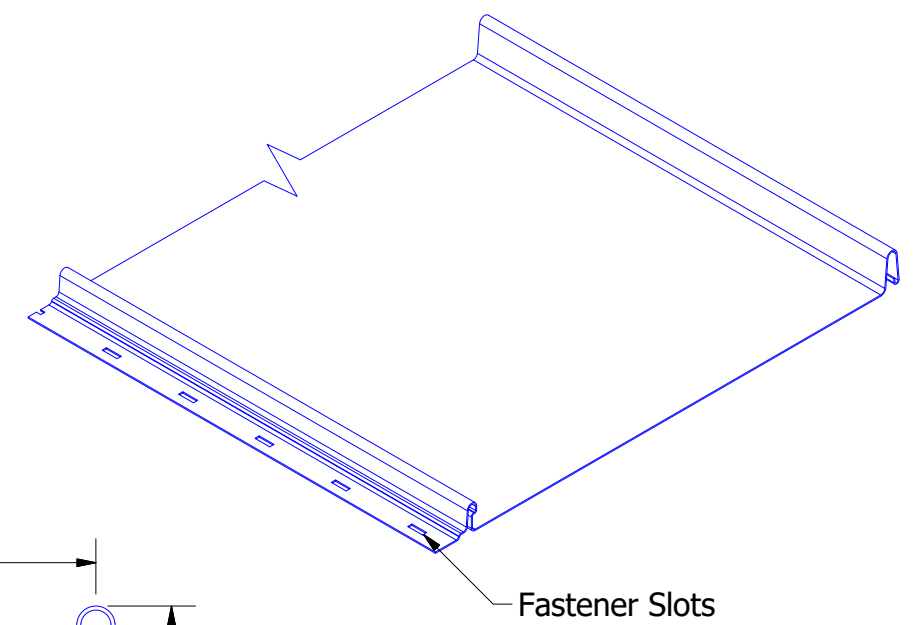
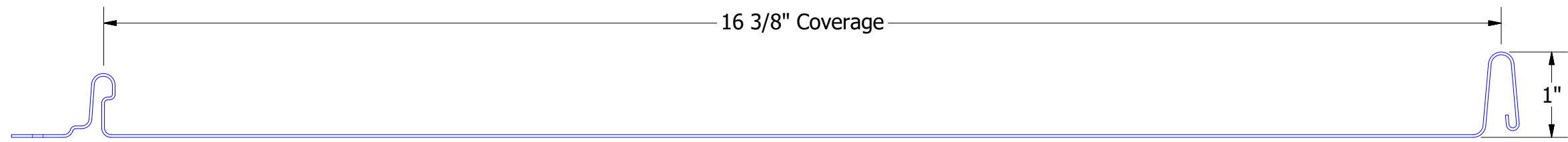
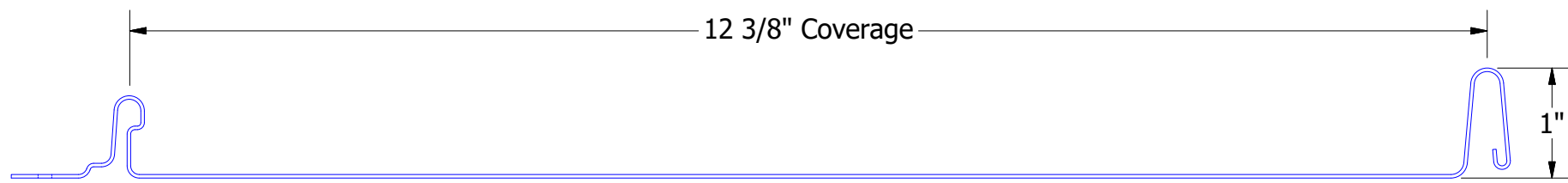


VSA118 - J Channel

**ATAS** ATAS INTERNATIONAL, INC  
 Allentown PA  
 610-395-8445  
 Mesa AZ  
 480-558-7210

REV. NO.	DATE	DESCRIPTION OF REVISION	BY	APP	TITLE	DR	DMR	DATE
					Versa-Line Jamb Detail			11/29/2016
						APP		DATE
						SH. SIZE	B	SCALE X:X



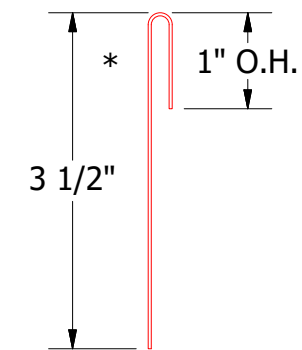
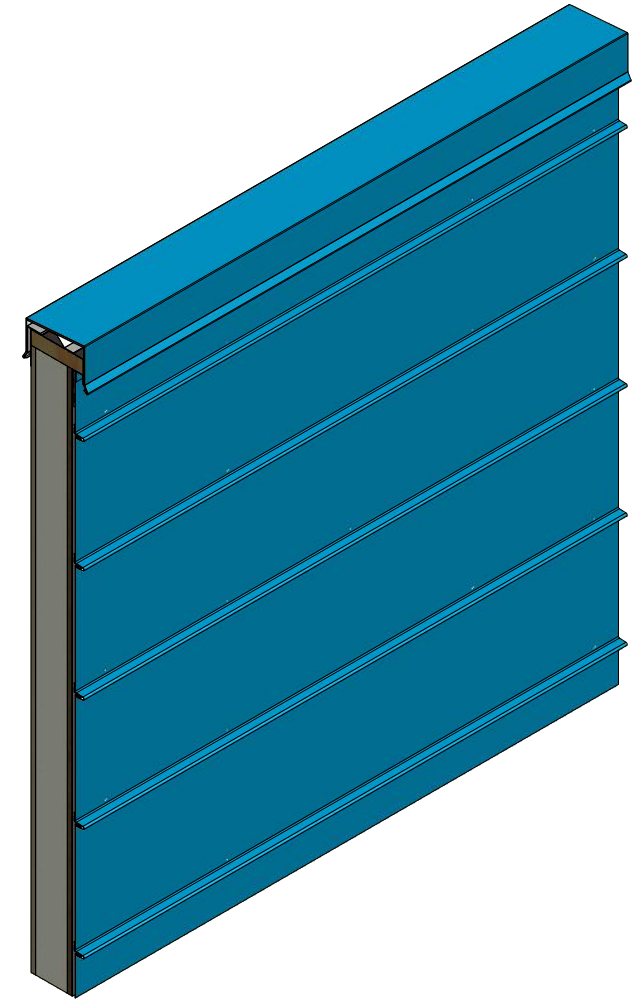
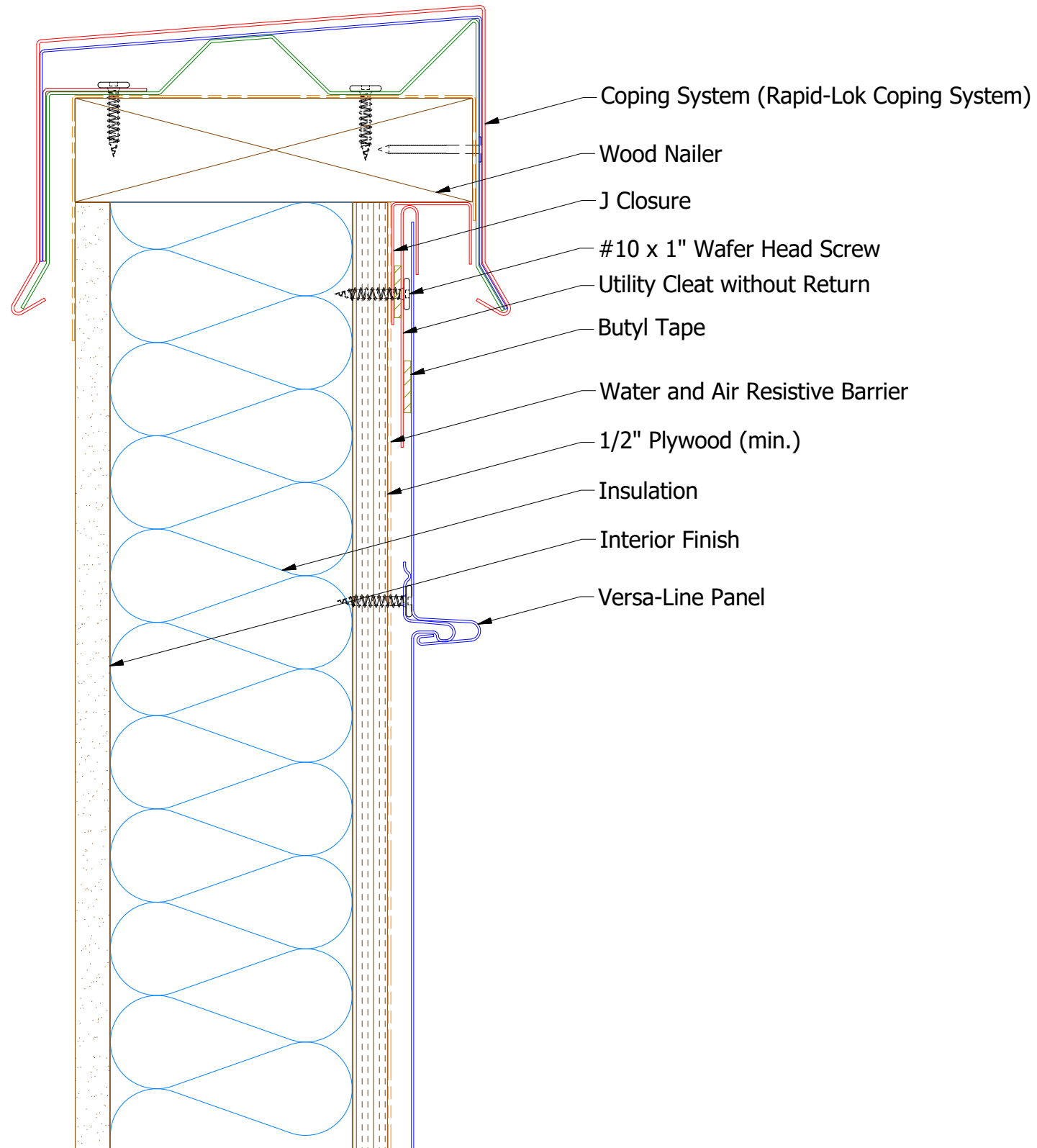


**ATAS** ATAS INTERNATIONAL, INC  
 Allentown PA  
 610-395-8445  
 Mesa AZ  
 480-558-7210

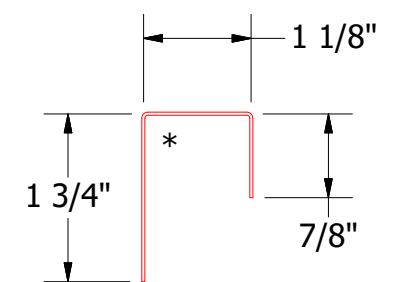
TITLE		Versa Line Panel Profile Detail	
DWG. NO.	DR	DATE	5/10/2016
	KRK	DATE	
MATERIAL	APP	SH. SIZE	B
		SCALE	X:X

REV. NO.	DATE	DESCRIPTION OF REVISION	BY	APP

# Horizontal Panel



VSA962 - Utility Cleat without Return



VSA270 - J Closure



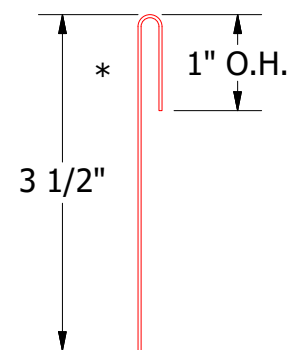
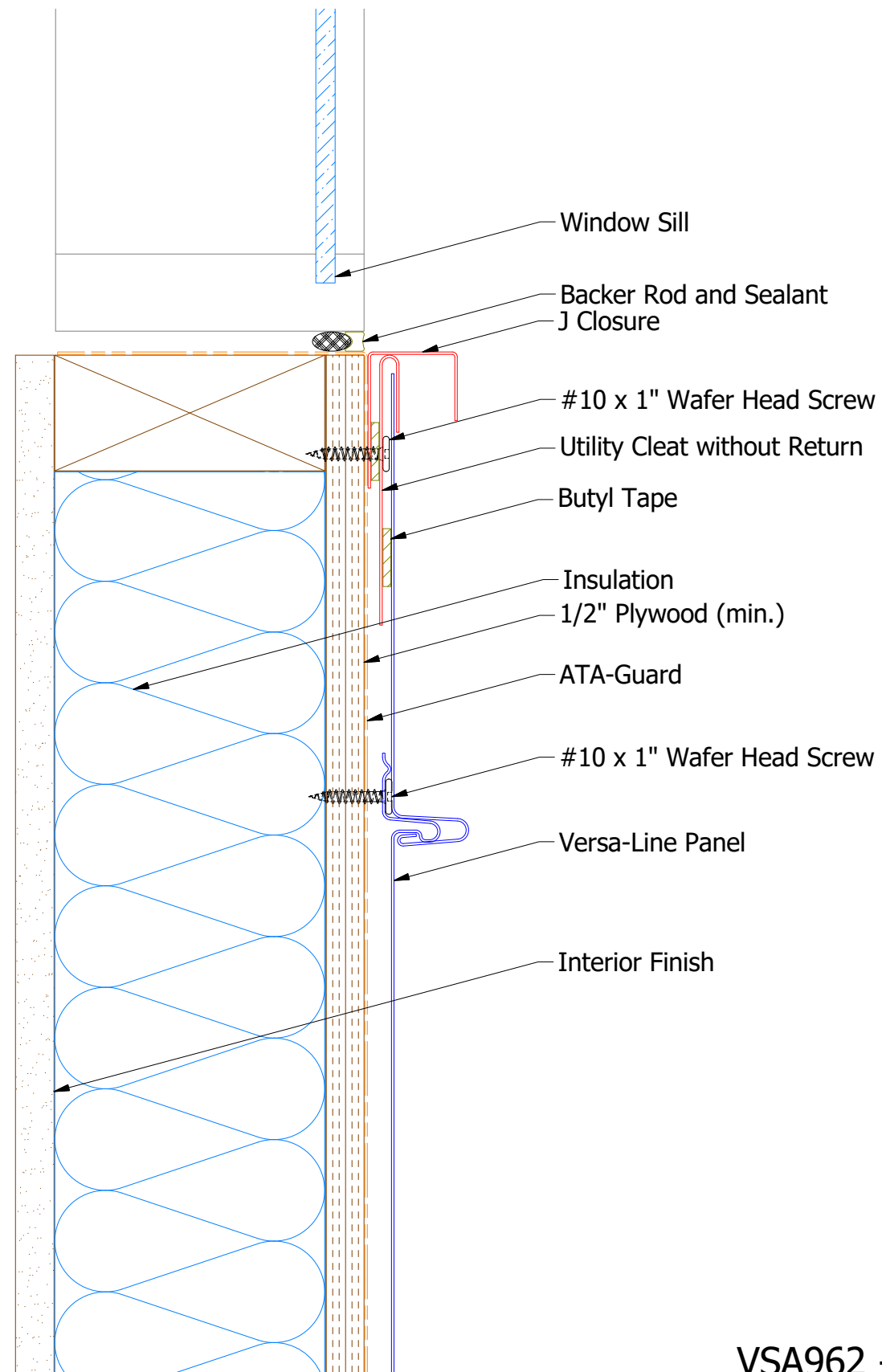
ATAS INTERNATIONAL, INC  
 Allentown PA  
 610-395-8445  
 Mesa AZ  
 480-558-7210

TITLE		Versa-Line Top of Wall Detail	
DWG. NO.	DR	DATE	11/30/2016
	DMR	DATE	
MATERIAL	APP	SH. SIZE	B
		SCALE	X:X

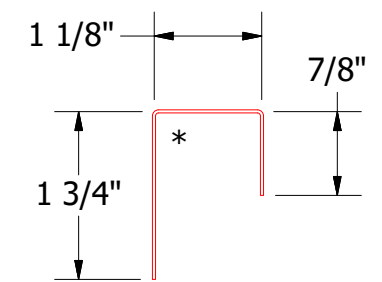
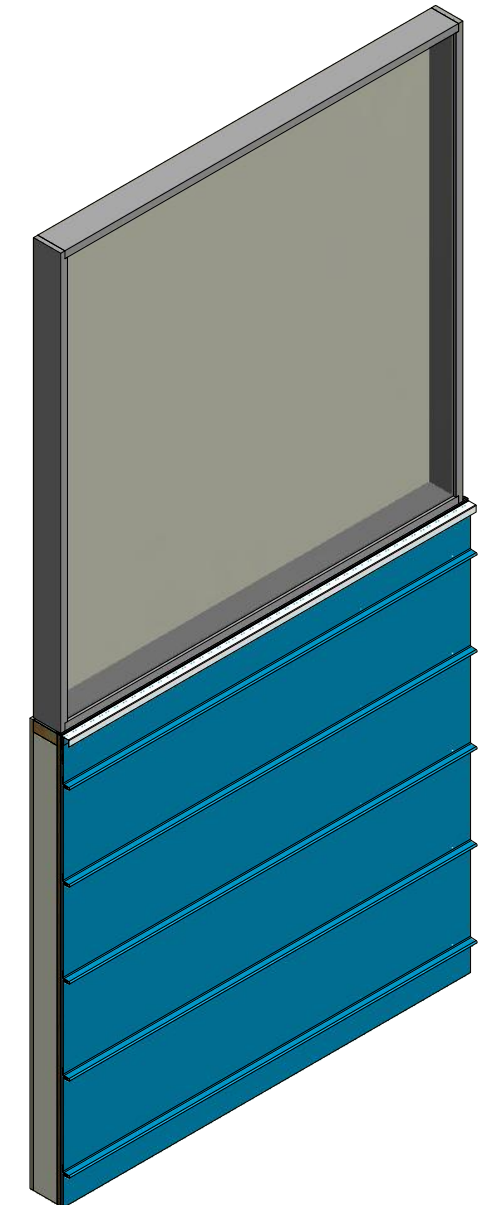
REV. NO.	DATE	DESCRIPTION OF REVISION	BY	APP



# Horizontal Panel



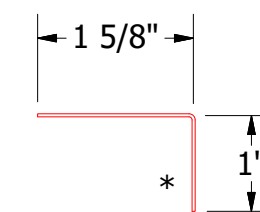
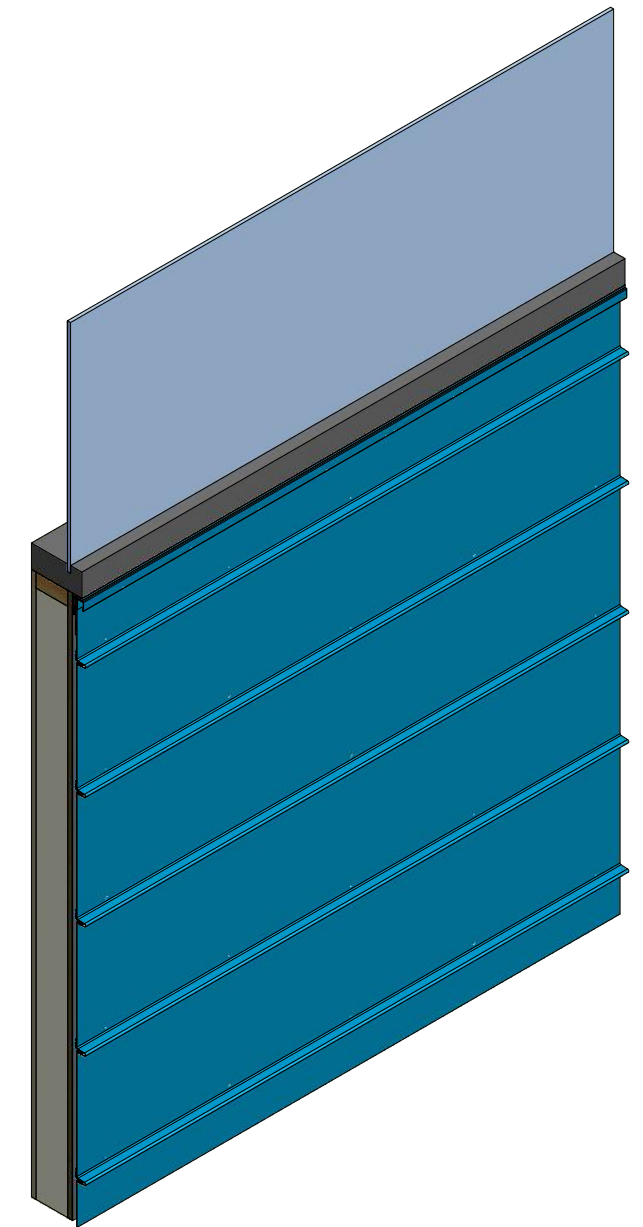
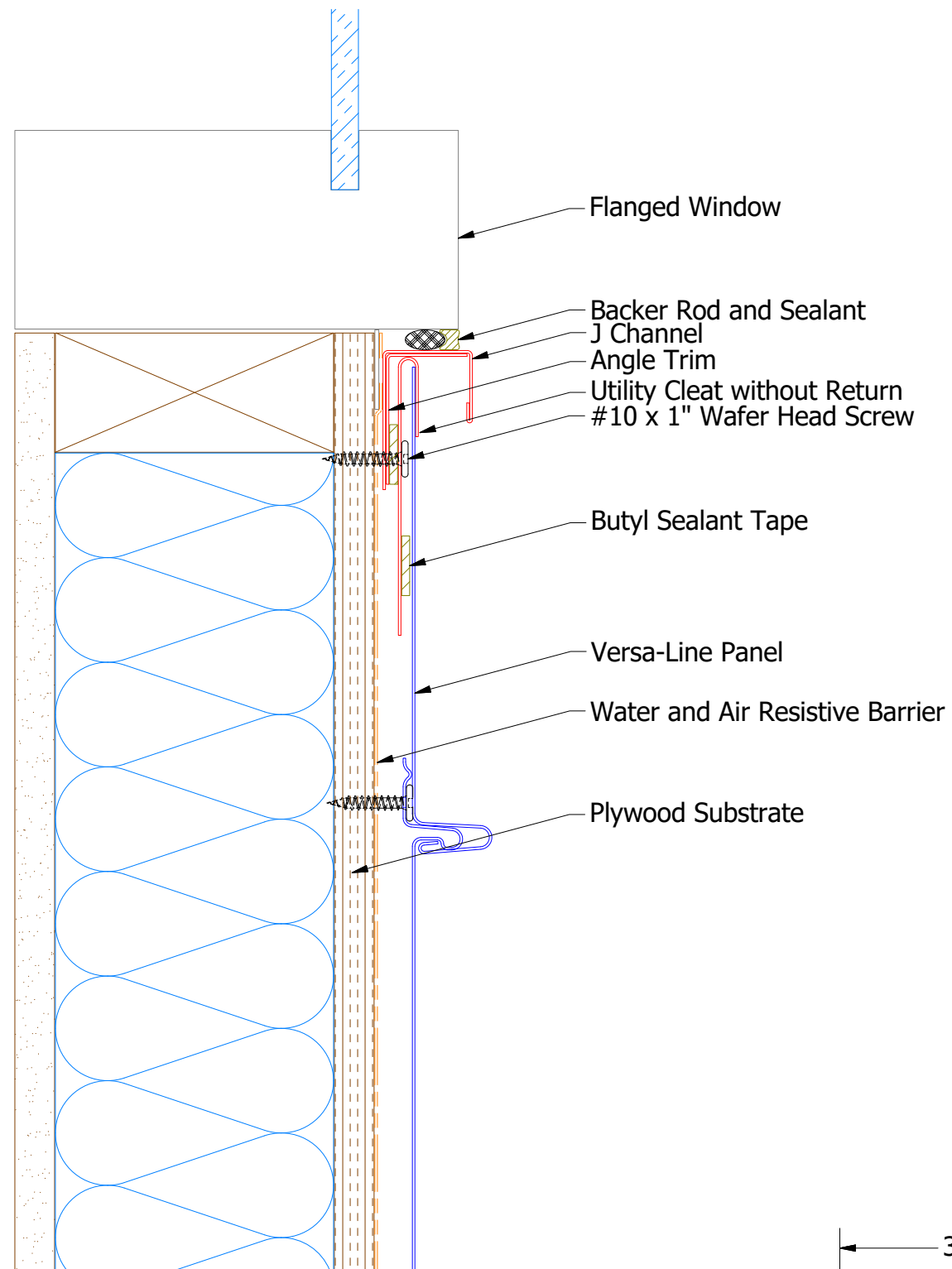
VSA962 - Utility Cleat without Return



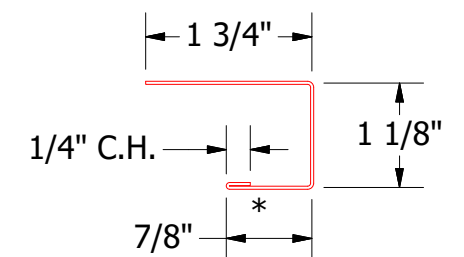
VSA270 - J Closure


**ATAS INTERNATIONAL, INC**  
 Allentown PA  
 610-395-8445  
 Mesa AZ  
 480-558-7210

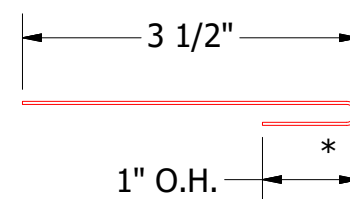
REV. NO.		DATE		DESCRIPTION OF REVISION		BY	APP	TITLE	
								Versa-Line Window Sill Existing Window Detail	
DWG. NO.		DR		DATE		APP		DATE	
		MBP		7/20/18					
MATERIAL		SH. SIZE		SCALE		BY		APP	
		B		X:X					



VSA680 - Angle Trim

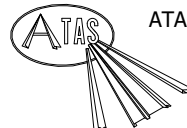


VSA118 - J Channel



VSA962 - Utility Cleat without Return

Note: \* denotes color side.

 <b>ATAS INTERNATIONAL, INC</b> Allentown PA 610-395-8445 Mesa AZ 480-558-7210		TITLE <b>Versa-Line Window Flange Window Sill Detail</b>	
		DWG. NO.	DR KRK
MATERIAL		APP	DATE
REV. NO.	DATE	DESCRIPTION OF REVISION	BY APP SH. SIZE B
		SCALE X:X	

REV. NO.	DATE	DESCRIPTION OF REVISION	BY	APP