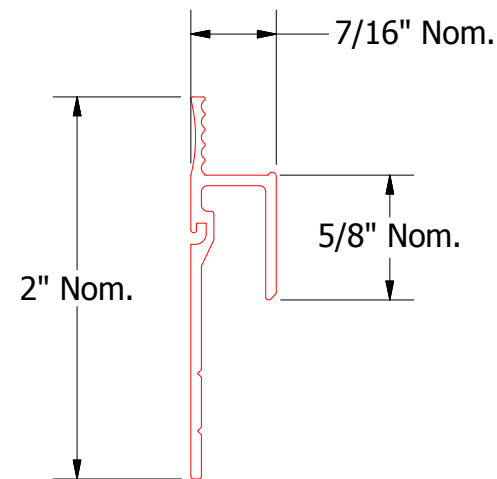
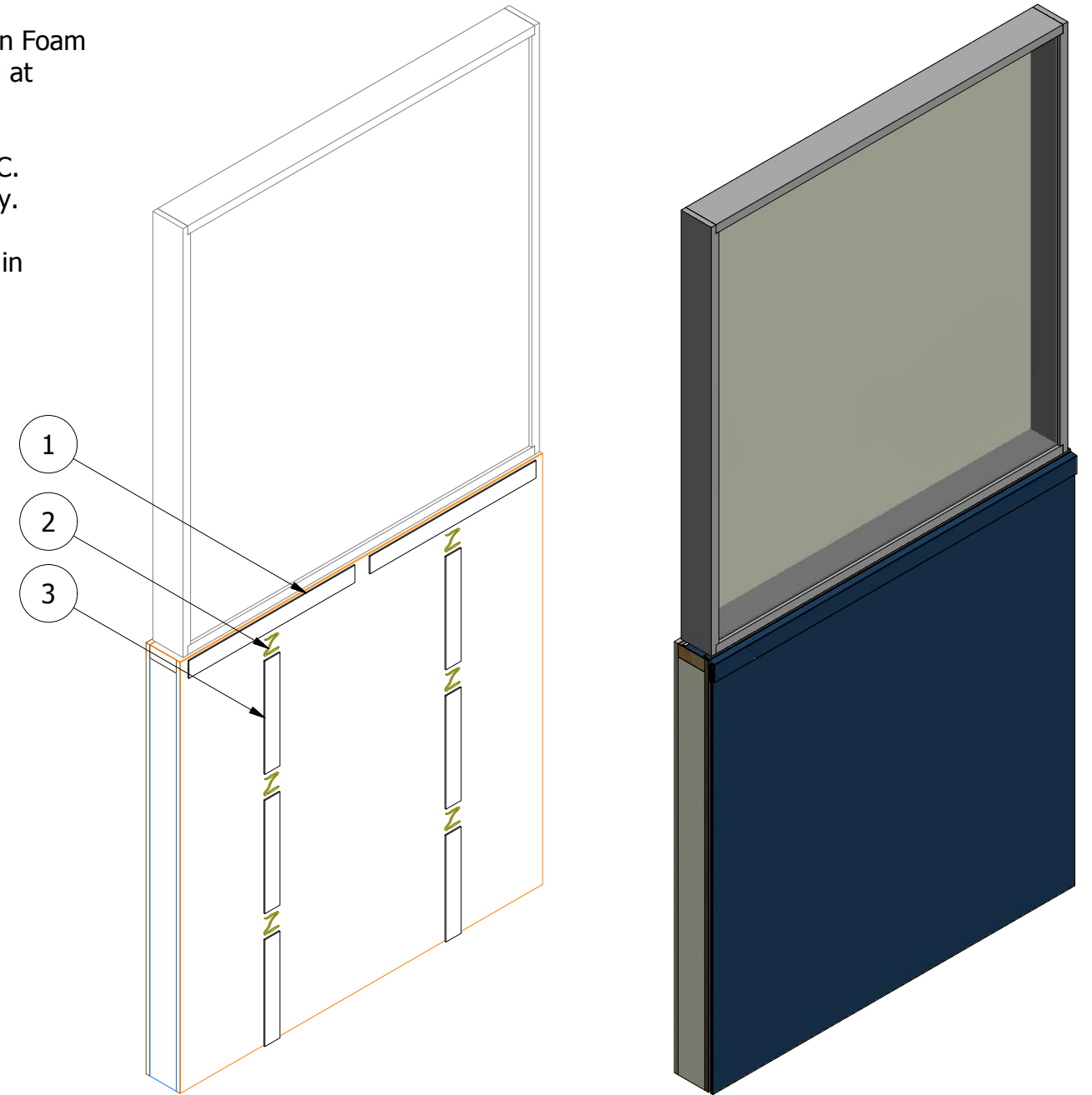
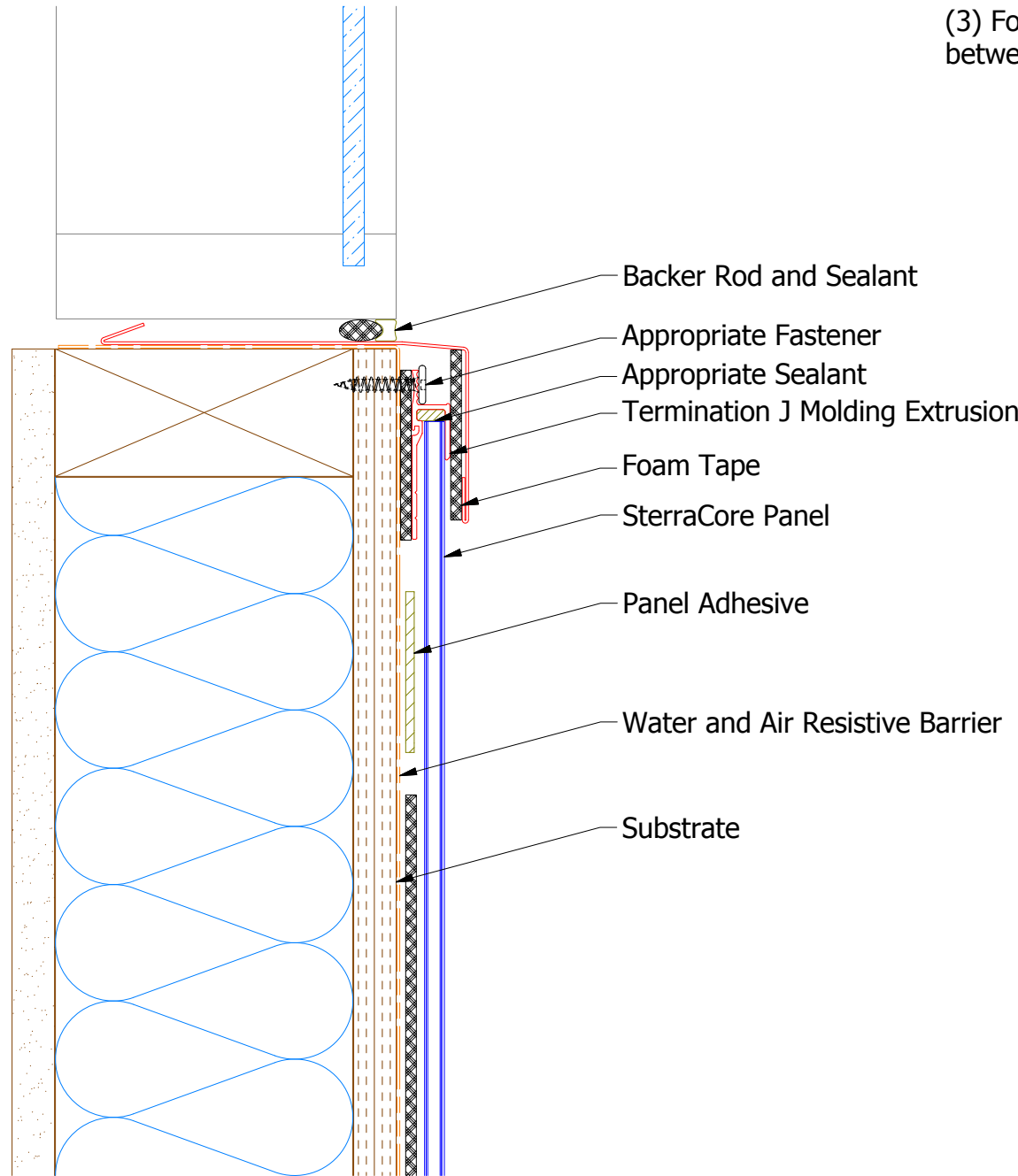


(1) J Molding Extrusion installed on Foam Tape. 2" min. gap at 24" O.C. and at transition to vertical moldings.

(2) Panel Adhesive applied 24" O.C. Horizontally and 16" O.C. Vertically.

(3) Foam Tape installed Vertically in between Panel Adhesive.



J Molding Extrusion



SterraCore Panel

Note: Spacing between Panels and Water and Air Resistive Barrier are shown for Clarity.

 ATAS INTERNATIONAL, INC Allentown PA 610-395-8445 Mesa AZ 480-558-7210		TITLE SterraCore Window Sill Detail - 1 Piece	
		DWG. NO.	DR KRK DATE 8/10/2015
MATERIAL		APP JEB DATE 8/26/2015	SH. SIZE B SCALE X:X
REV. NO.	DATE	DESCRIPTION OF REVISION	BY APP