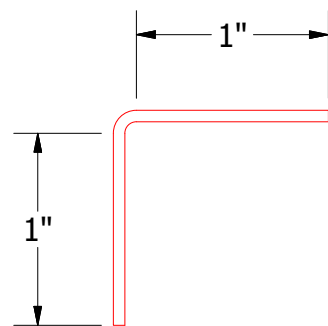
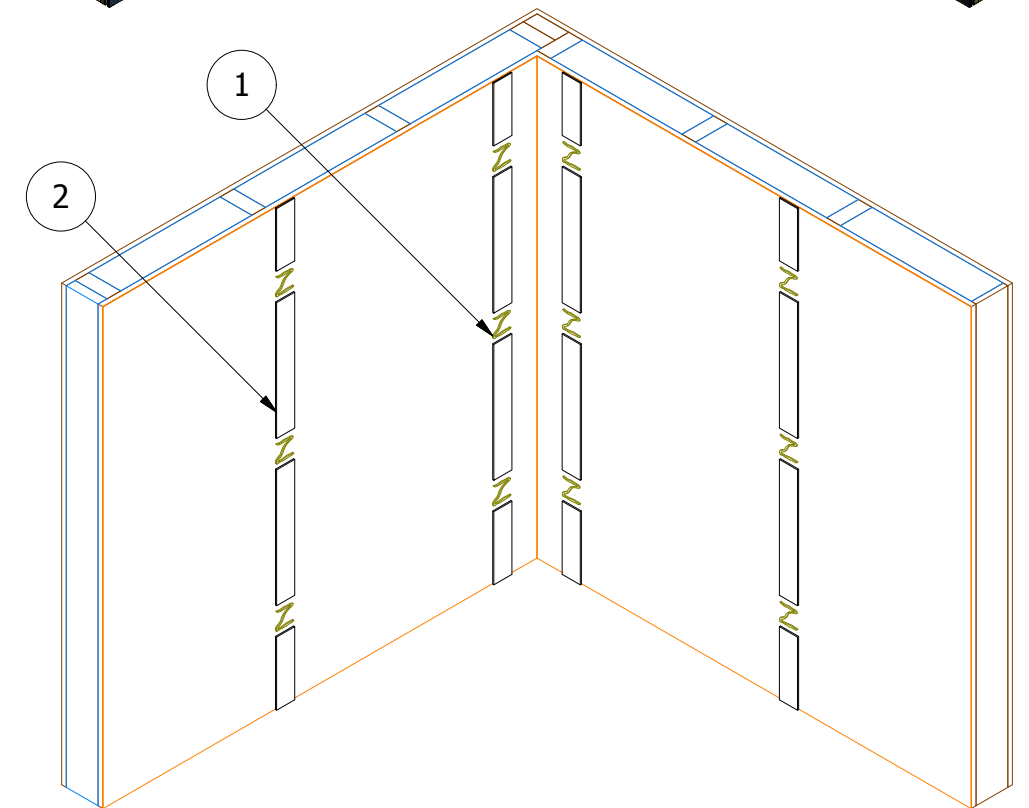
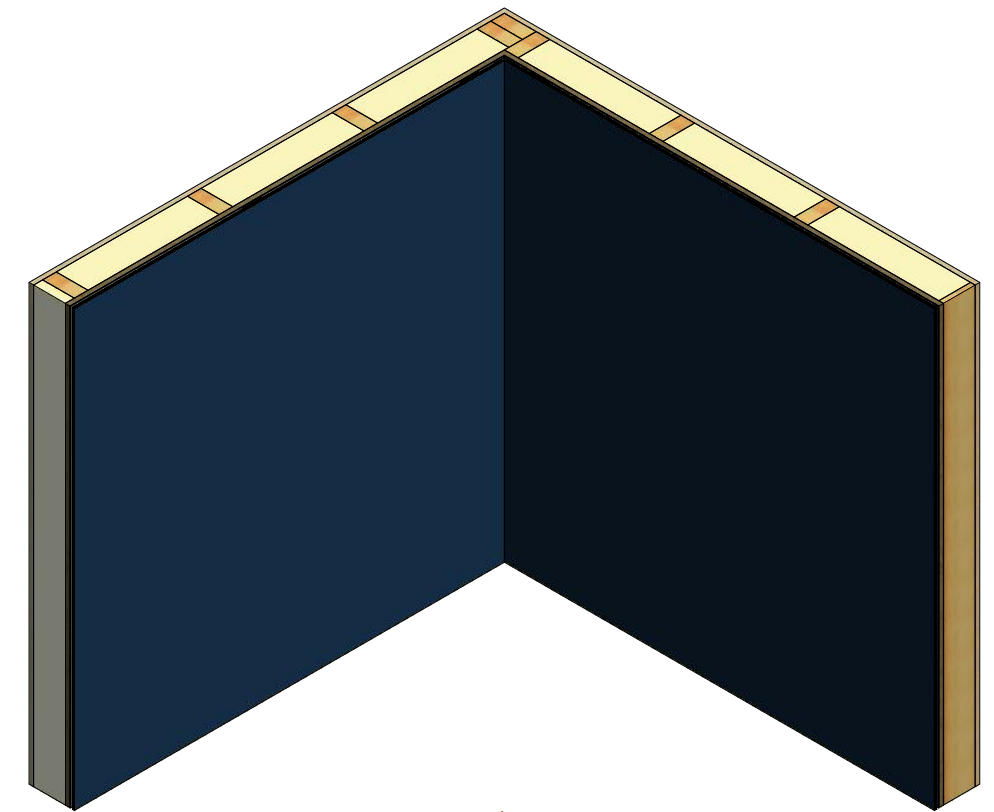


- Panel Sealant
- Aluminum Angle
- #6 or #8 x 1/4" PPH Screw (12" O.C.)
- SterraCore Panel
- Water and Air Resistive Barrier
- Panel Adhesive/Foam Tape
- Substrate

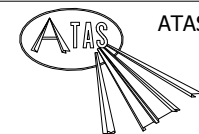
- (1) Panel Adhesive applied 24" O.C. Horizontally and 16" O.C. Vertically.
- (2) Foam Tape installed Vertically in between Panel Adhesive.



Aluminum Angle



SterraCore Panel



ATAS INTERNATIONAL, INC
 Allentown PA
 610-395-8445
 Mesa AZ
 480-558-7210

TITLE
 SterraCore Routed Inside Corner Detail - 1 Piece

REV. NO.	DATE	DESCRIPTION OF REVISION	BY	APP	DWG. NO.	DR	KRK	DATE	8/27/2015
					MATERIAL	APP	JEB	DATE	8/27/2015
					SH. SIZE	B	SCALE	X:X	

Note: Spacing between Panels and Water and Air Resistive Barrier are shown for Clarity.