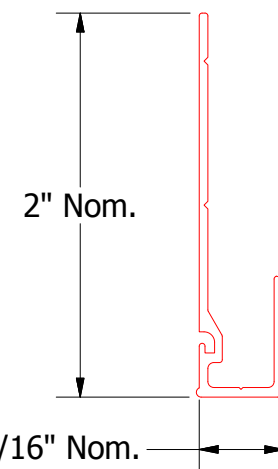
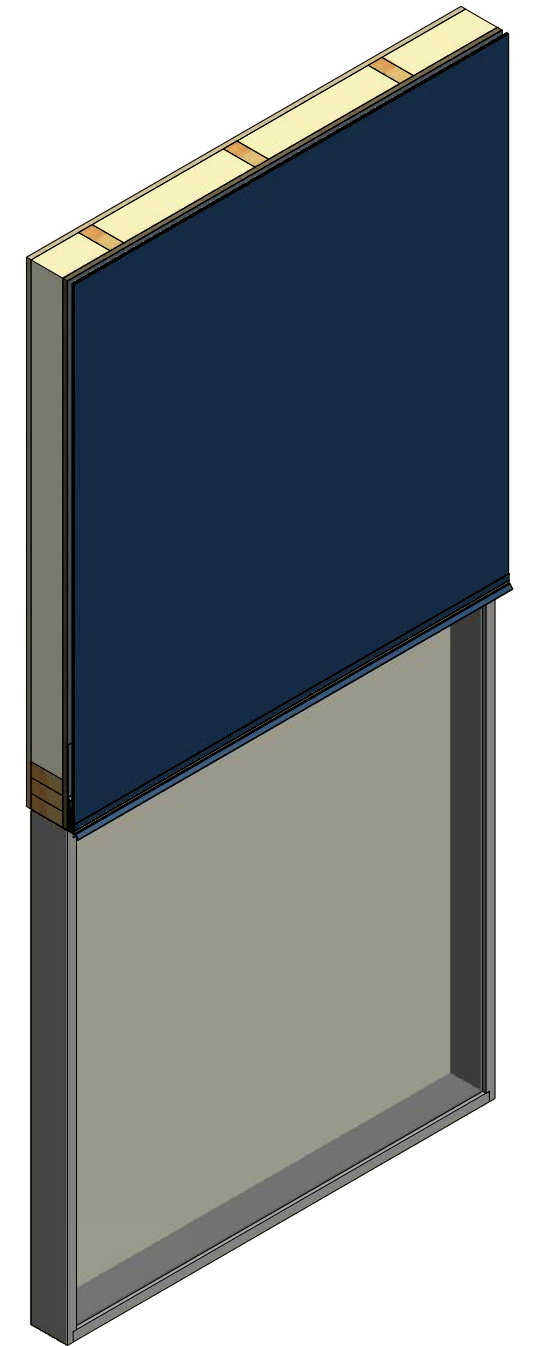
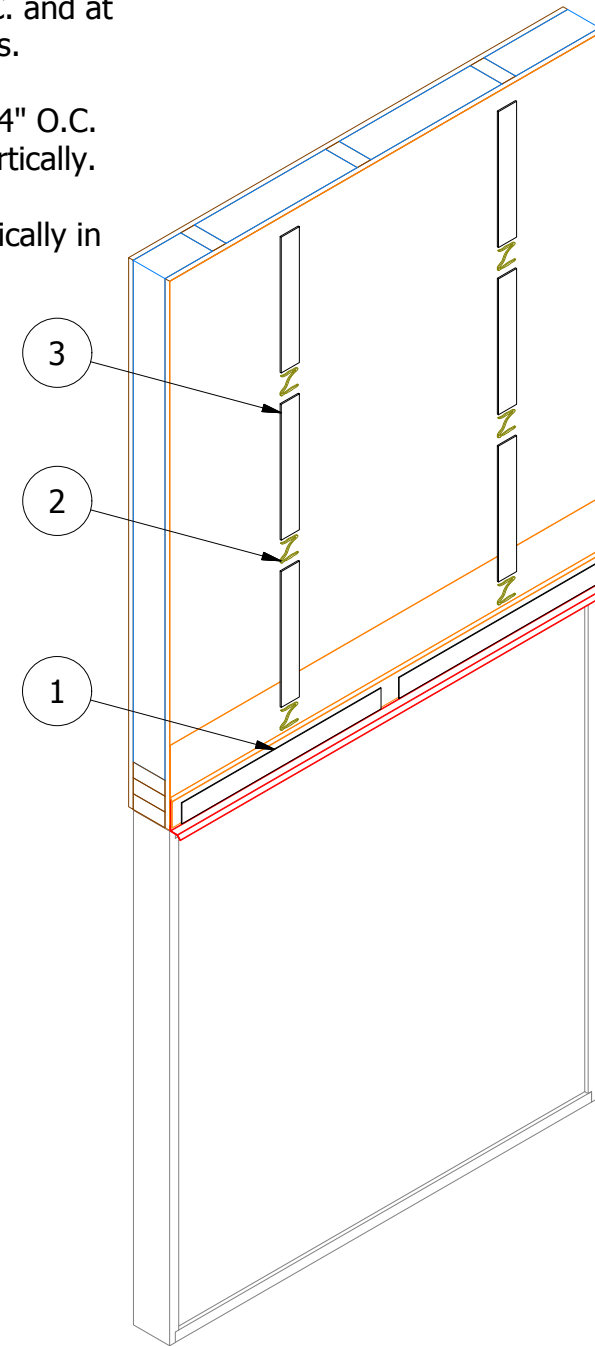
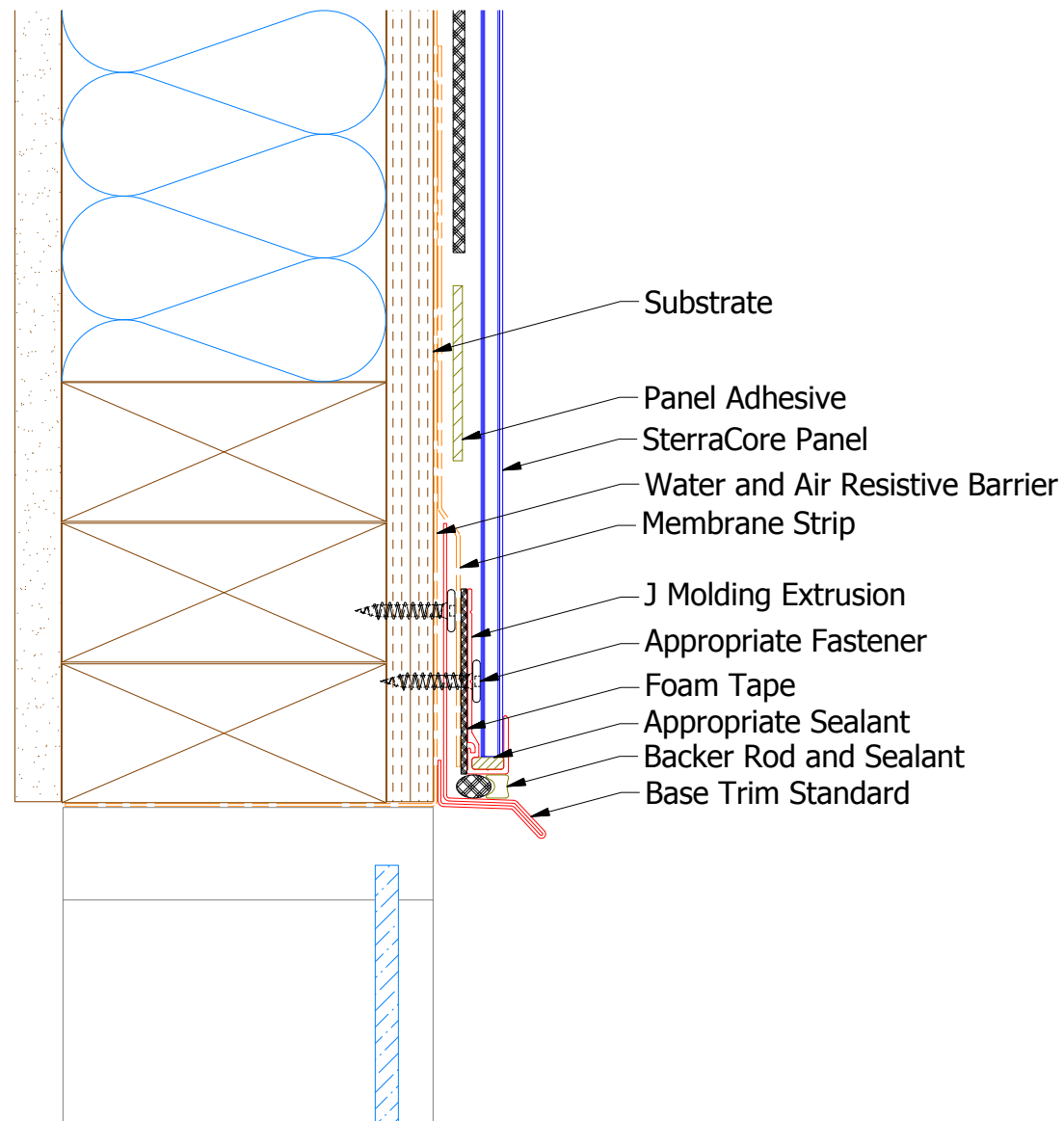


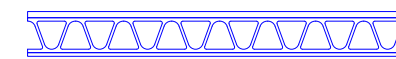
(1) J Molding Extrusion installed on Foam Tape. 2" min. gap at 24" O.C. and at transition to vertical moldings.

(2) Panel Adhesive applied 24" O.C. Horizontally and 16" O.C. Vertically.

(3) Foam Tape installed Vertically in between Panel Adhesive.




J Molding Extrusion



SterraCore Panel

Note: Spacing between Panels and Water and Air Resistive Barrier are shown for Clarity.

REV. NO.	DATE	DESCRIPTION OF REVISION	BY	APP

 ATAS INTERNATIONAL, INC Allentown PA 610-395-8445 Mesa AZ 480-558-7210		TITLE SterraCore Head Detail - 1 Piece	
		DWG. NO.	DR KRK
MATERIAL		APP JEB	DATE 8/26/2015
SH. SIZE B		SCALE X:X	