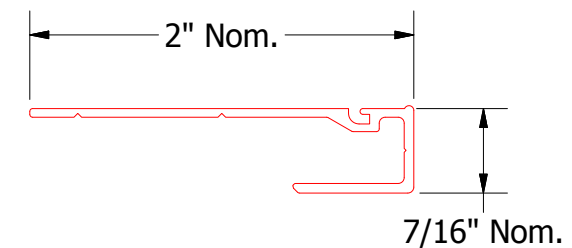
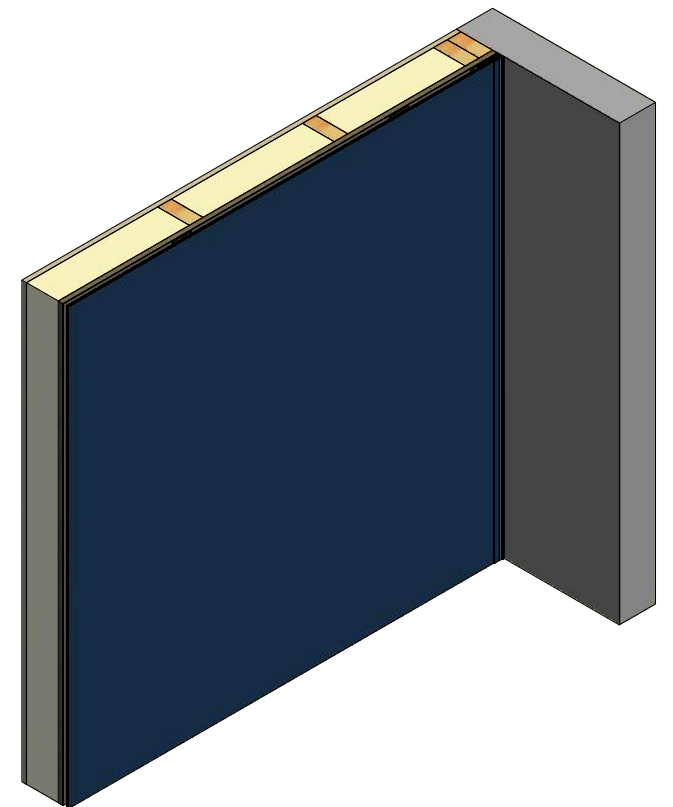
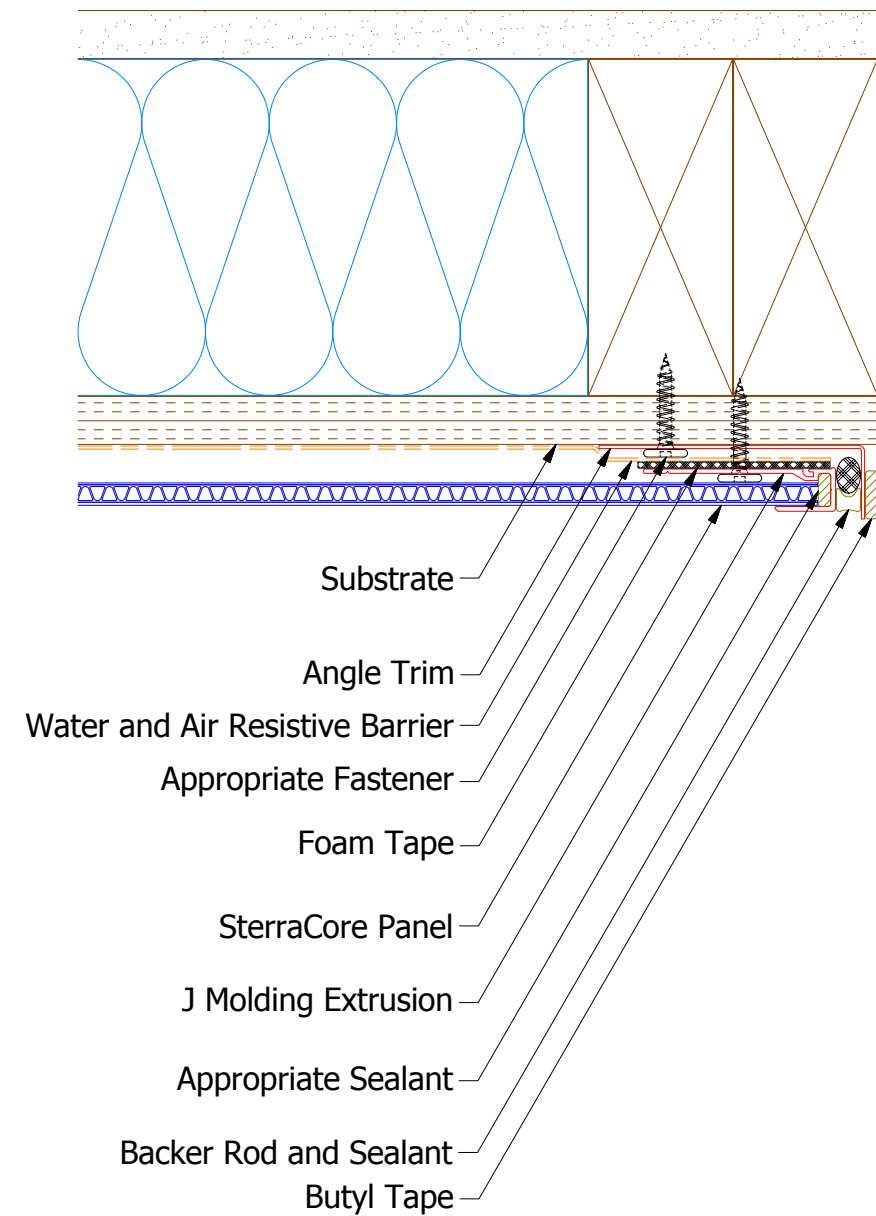


(1) J Molding Extrusion installed on Foam Tape. 2" min. gap at 24" O.C. and at transition to vertical moldings.

(2) Panel Adhesive applied 24" O.C. Horizontally and 16" O.C. Vertically.

(3) Foam Tape installed Vertically in between Panel Adhesive.



J Molding Extrusion



SterraCore Panel



TITLE
SterraCore Endwall Detail - 1 Piece

REV. NO.	DATE	DESCRIPTION OF REVISION	BY	APP	DWG. NO.	DR	KRK	DATE	7/20/2015
						APP	JEB	DATE	8/25/2015
					MATERIAL	SH. SIZE	B	SCALE	X:X

Note: Spacing between Panels and Water and Air Resistive Barrier are shown for Clarity.