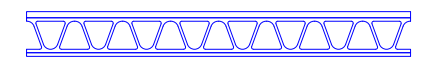
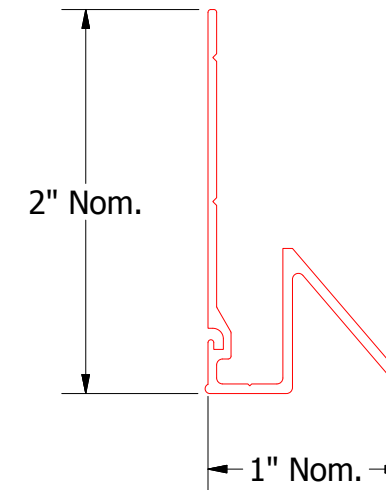
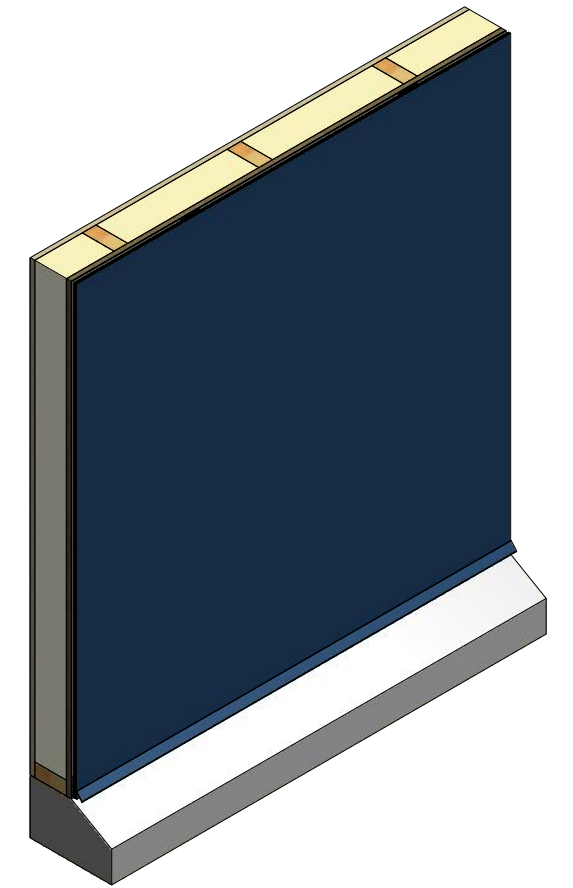
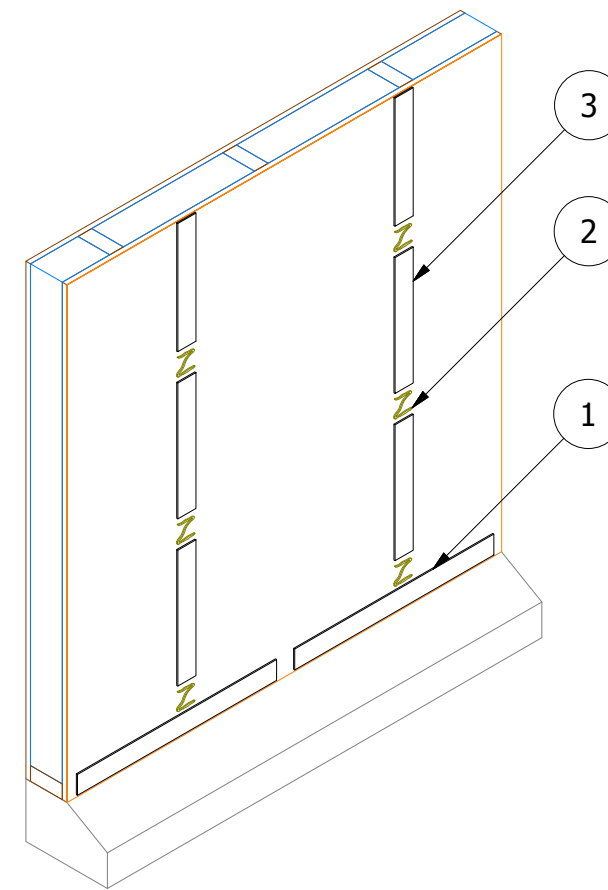
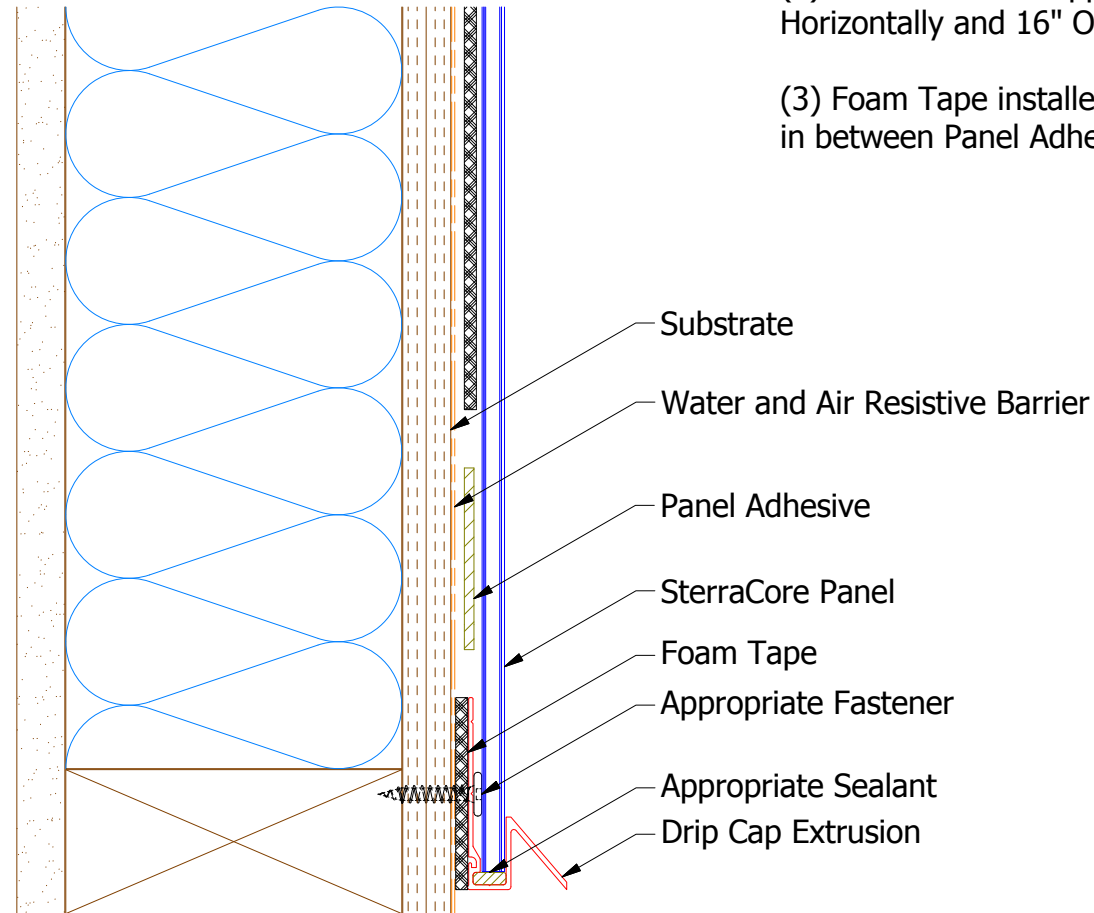


(1) Drip Cap Extrusion installed on Foam Tape. 2" min. gap at 24" O.C. and at transition to vertical moldings.

(2) Panel Adhesive applied 24" O.C. Horizontally and 16" O.C. Vertically.

(3) Foam Tape installed Vertically in between Panel Adhesive.



SterraCore Panel



ATAS INTERNATIONAL, INC
Allentown PA
610-395-8445
Mesa AZ
480-558-7210

TITLE SterraCore Base Detail - 1 Piece			
DWG. NO.	DR KRK	DATE 7/17/2015	
MATERIAL	APP JEB	DATE 8/25/2015	
REV. NO.	SH. SIZE B	SCALE X:X	

Note: Spacing between Panels and Water and Air Resistive Barrier are shown for Clarity.

REV. NO.	DATE	DESCRIPTION OF REVISION	BY	APP