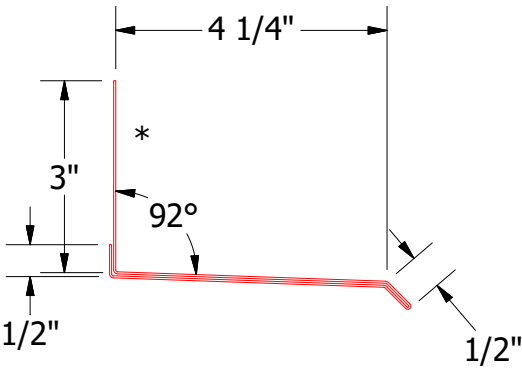
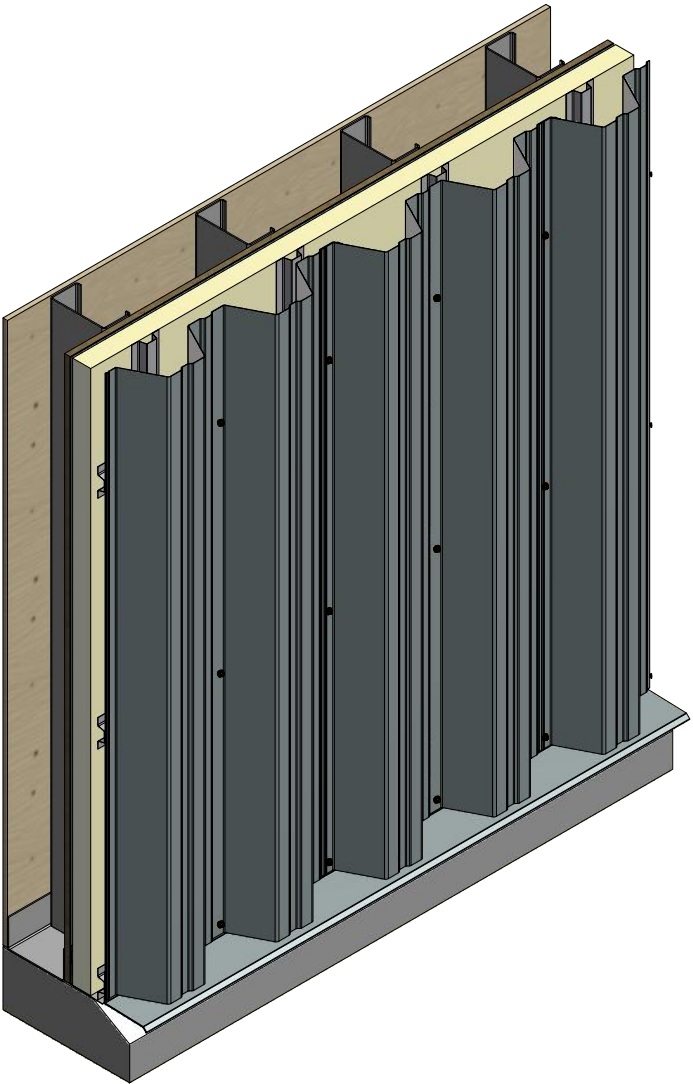
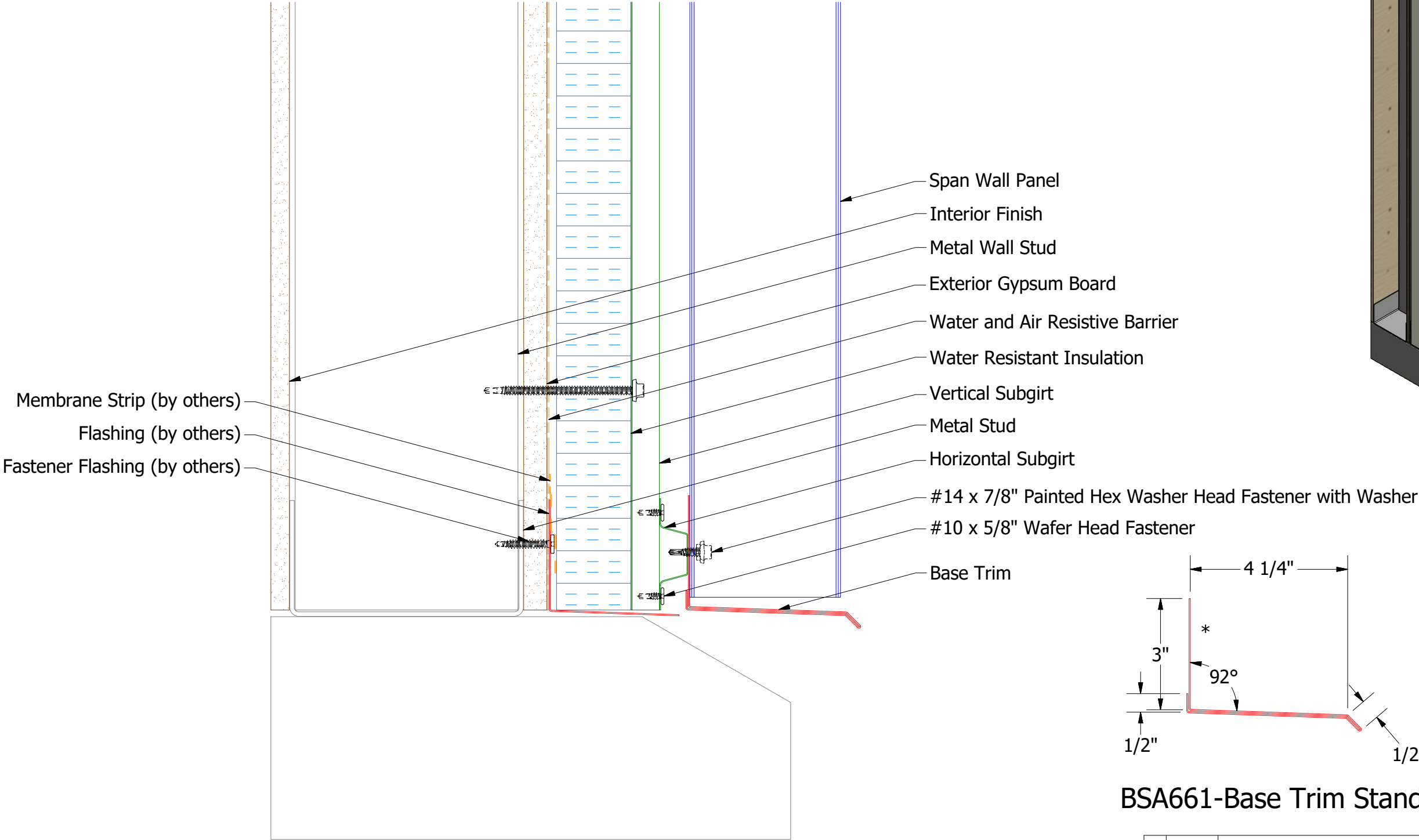


ATAS INTERNATIONAL, INC  
Allentown PA  
610-395-8445  
Mesa AZ  
480-558-7210


					Span Wall Panel Detail			
					DWG. NO.		DR	DATE
							DMR	12/16/2016
					MATERIAL		APP	DATE
REV. NO.	DATE	DESCRIPTION OF REVISION	BY	APP			SH. SIZE	SCALE
							B	X:X

Vertical Panel

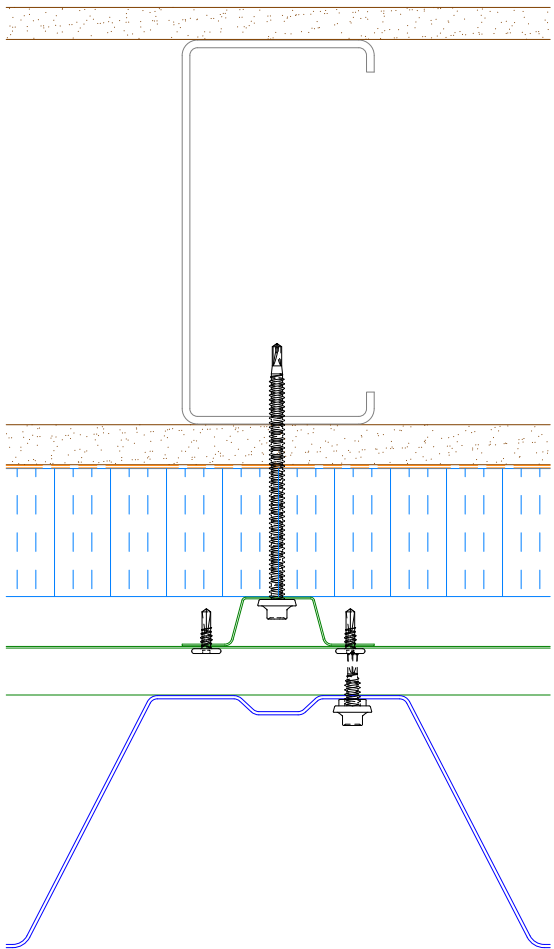
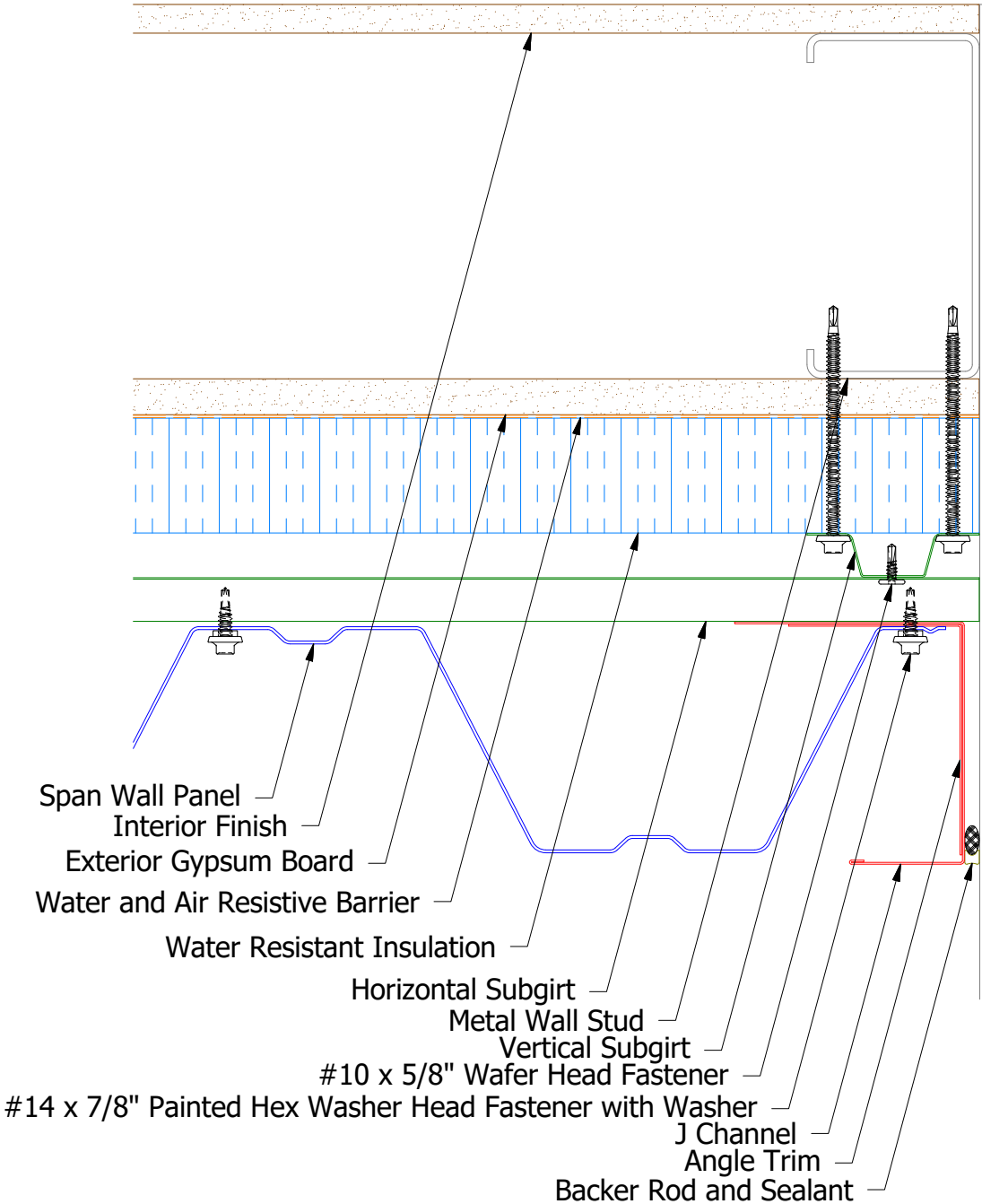


BSA661-Base Trim Standard

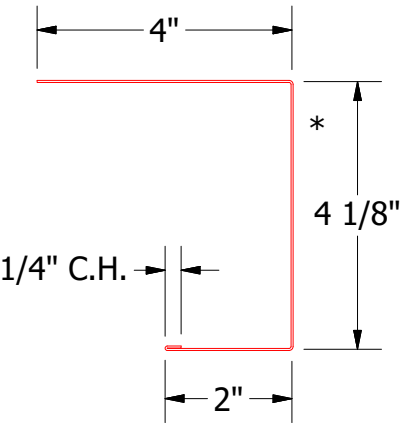
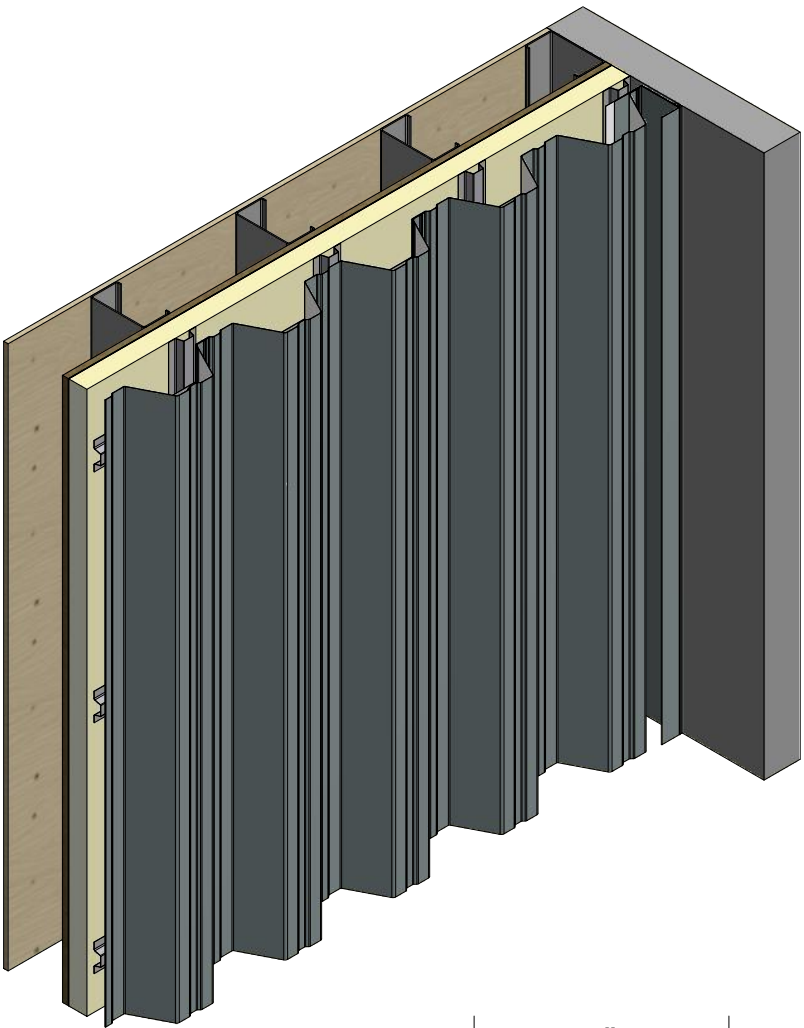
2 Stage Method of Weather Proofing

		ATAS INTERNATIONAL, INC Allentown PA 610-395-8445 Mesa AZ 480-558-7210	
TITLE Span Wall Panel Base Detail			
DWG. NO.		DR KRK	DATE 3/3/2015
MATERIAL		APP	DATE
		SH. SIZE B	SCALE X:X

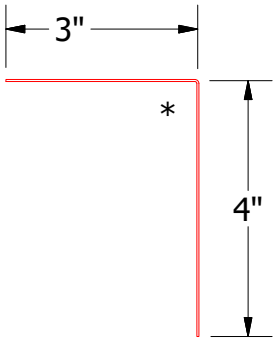
Vertical Subgirt



Alternate Subgirt Orientation




BSA140-J Channel



BSA680-Angle Trim

2 Stage Method of Weather Proofing

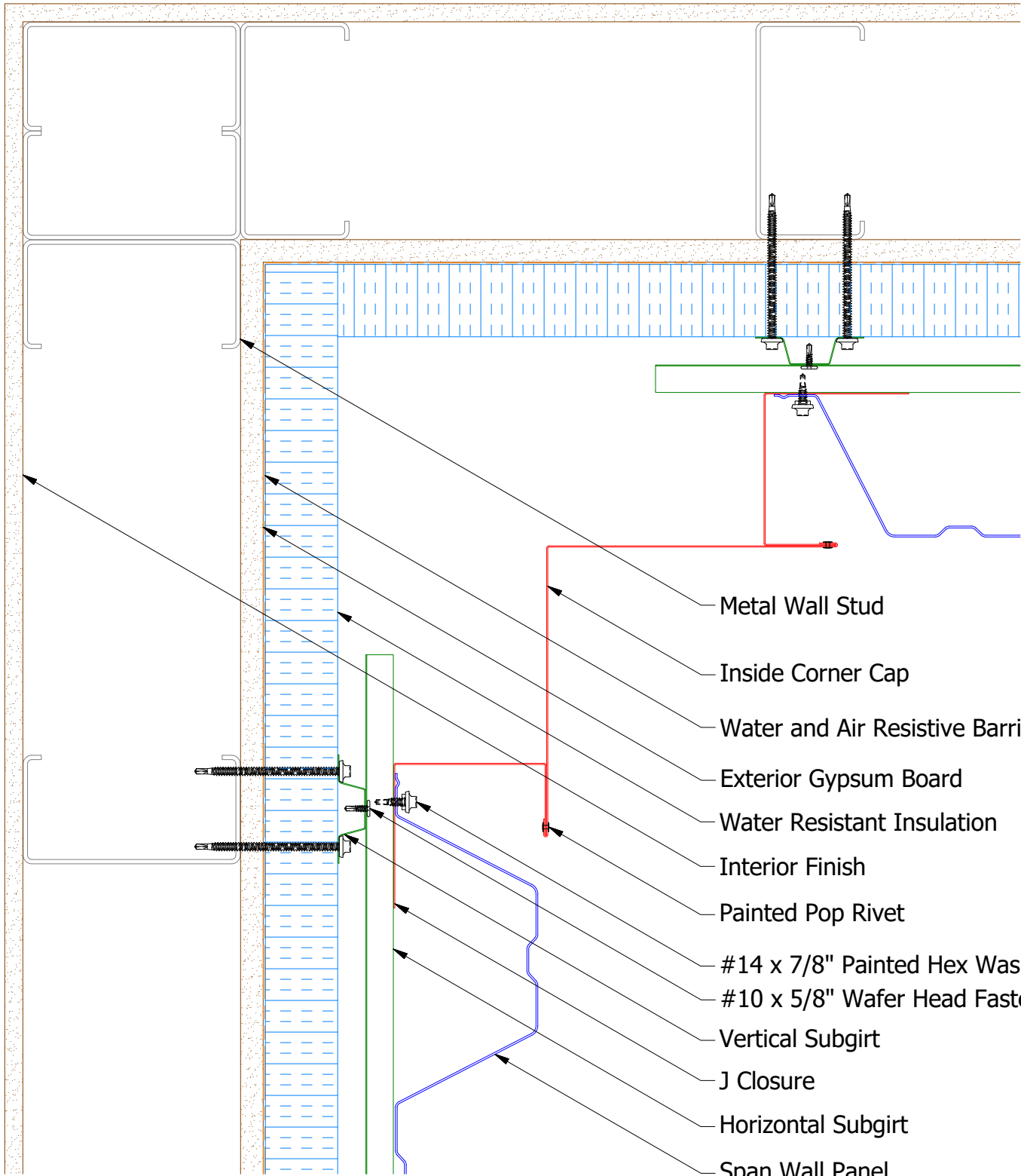


ATAS INTERNATIONAL, INC  
Allentown PA  
610-395-8445  
Mesa AZ  
480-558-7210

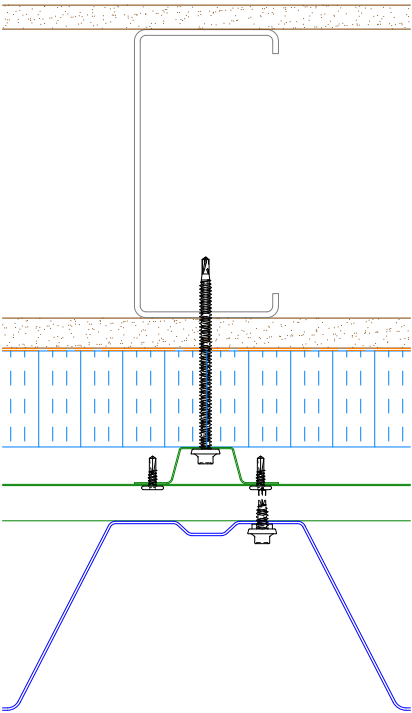
TITLE Span Wall Panel Endwall Detail			
DWG. NO.		DR KRK	DATE 3/5/2015
APP		DATE	
MATERIAL		SH. SIZE B	SCALE X:X

REV. NO.	DATE	DESCRIPTION OF REVISION	BY	APP

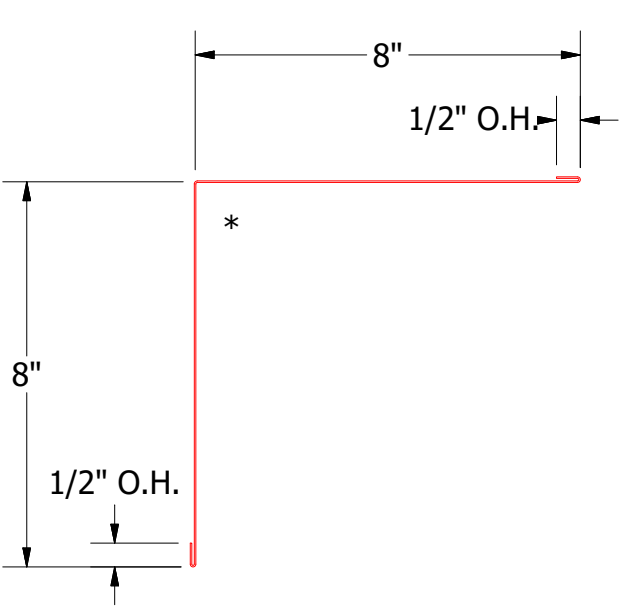
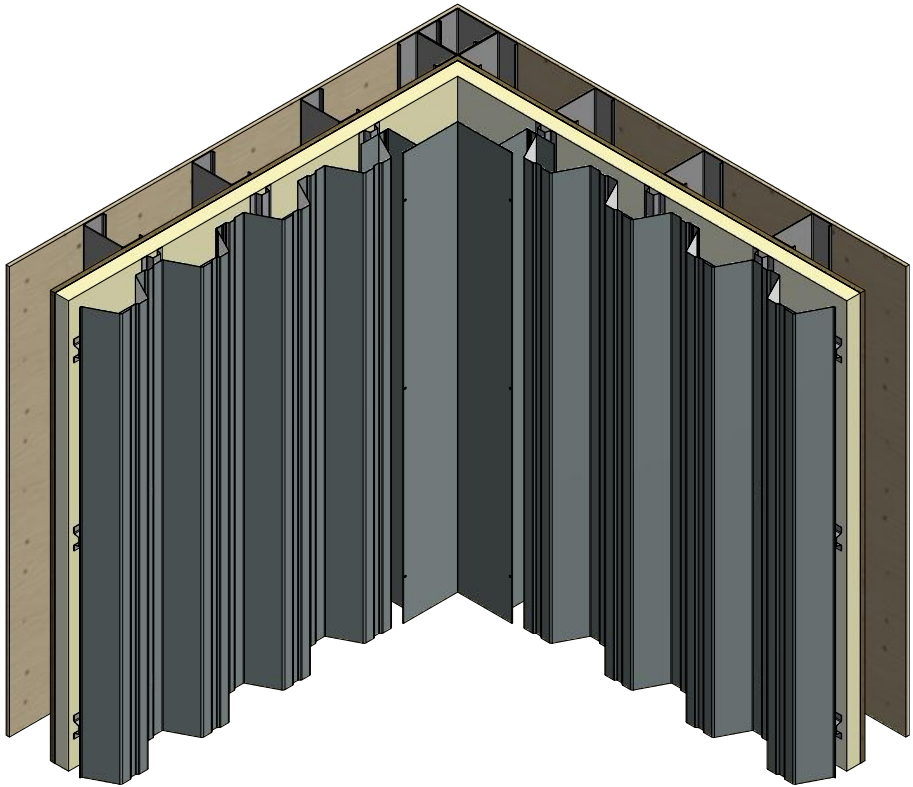
Vertical Panel



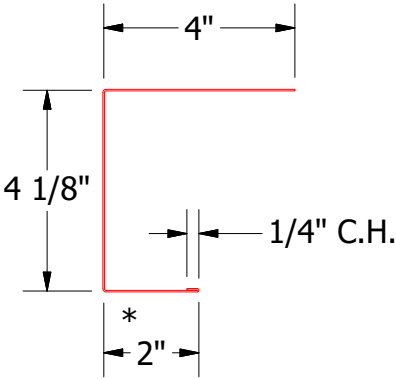
- Metal Wall Stud
- Inside Corner Cap
- Water and Air Resistive Barrier
- Exterior Gypsum Board
- Water Resistant Insulation
- Interior Finish
- Painted Pop Rivet
- #14 x 7/8" Painted Hex Washer Head Fastener with Washer
- #10 x 5/8" Wafer Head Fastener
- Vertical Subgirt
- J Closure
- Horizontal Subgirt
- Span Wall Panel



Alternate Subgirt Orientation

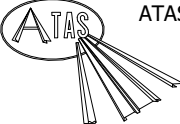


BSA600-Inside Corner Cap



BSA140-J Channel

2 Stage Method of Weather Proofing

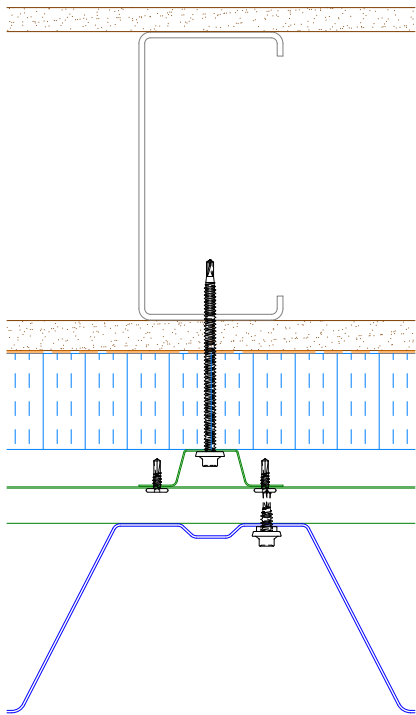


ATAS INTERNATIONAL, INC  
Allentown PA  
610-395-8445  
Mesa AZ  
480-558-7210

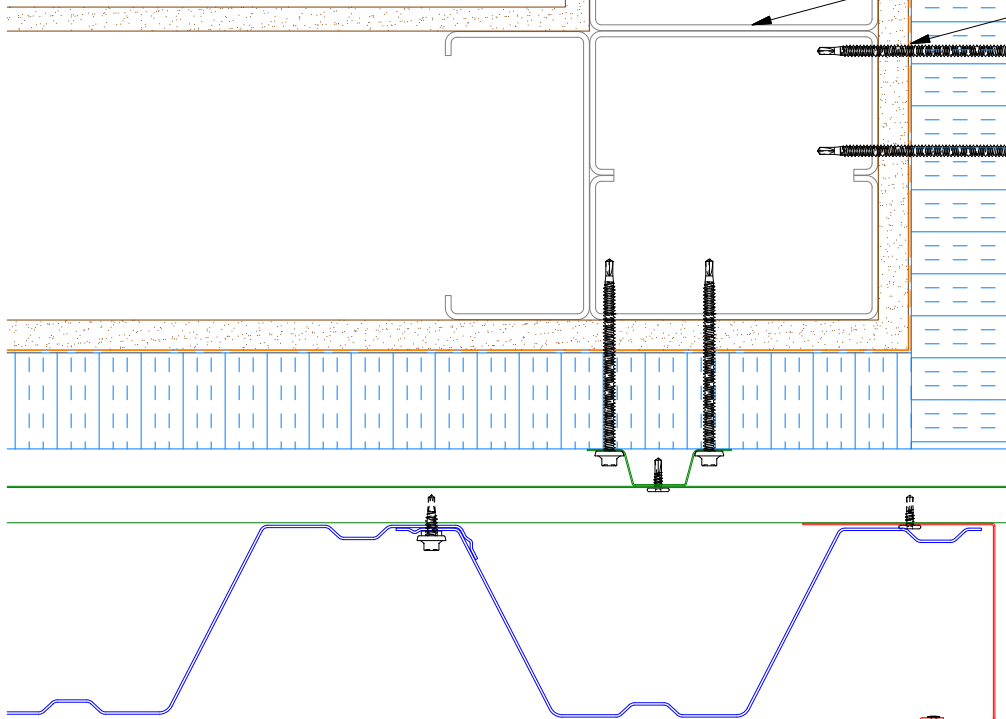
TITLE Span Wall Inside Corner Cap Detail			
DWG. NO.		DR KRK	DATE 3/6/2015
MATERIAL		APP	DATE
REV. NO.	DATE	DESCRIPTION OF REVISION	BY APP
SH. SIZE B		SCALE X:X	

REV. NO.	DATE	DESCRIPTION OF REVISION	BY	APP

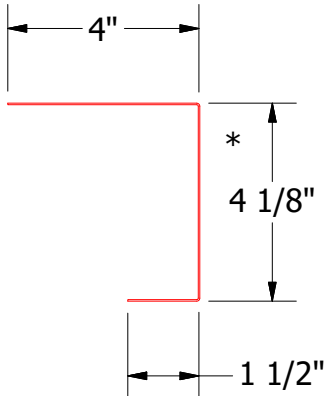
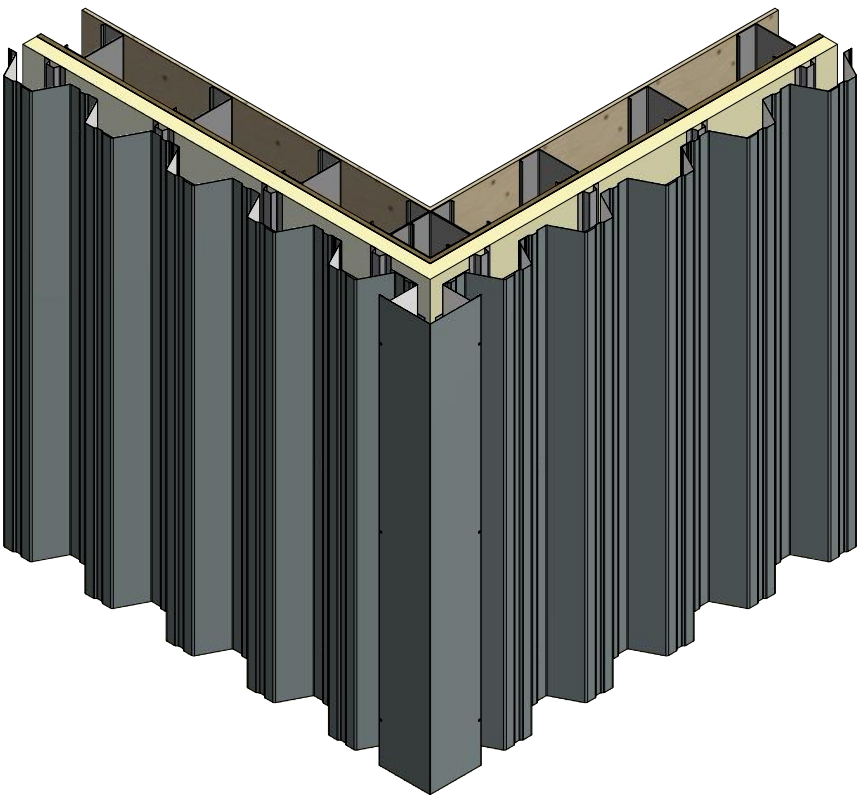
Vertical Panel



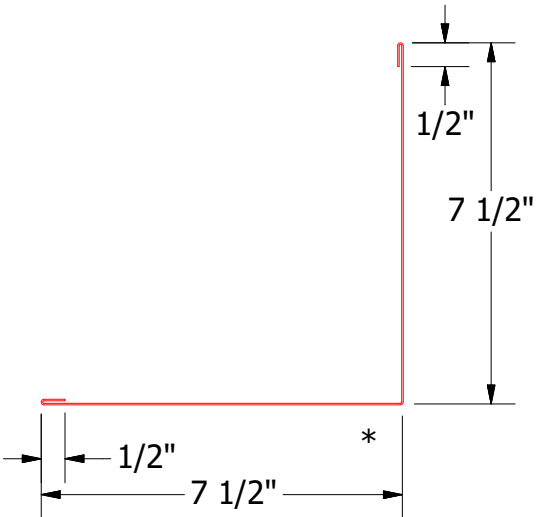
Alternate Subgirt Orientation



- Interior Finish
- Exterior Gypsum Board
- #14 x 7/8" Painted Hex Washer Head Fastener with Washer
- Metal Wall Stud
- Water and Air Resistive Barrier
- Vertical Subgirt
- Horizontal Subgirt
- Span Wall Panel
- Water Resistant Insulation
- #10 x 5/8" Wafer Head Fastener
- Painted Pop Rivet (Stainless Steel)
- J Closure
- Outside Corner Cap




BSA270-J Closure



BSA610-Outside Corner Cap

2 Stage Method of Weather Proofing

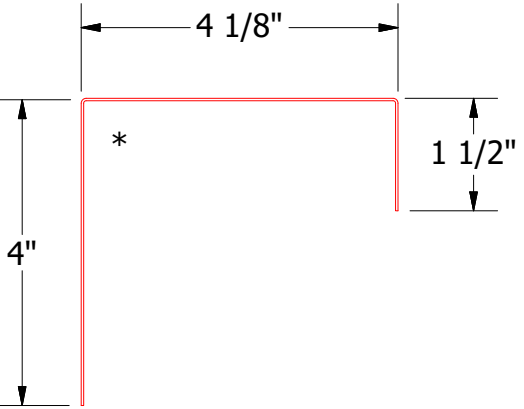
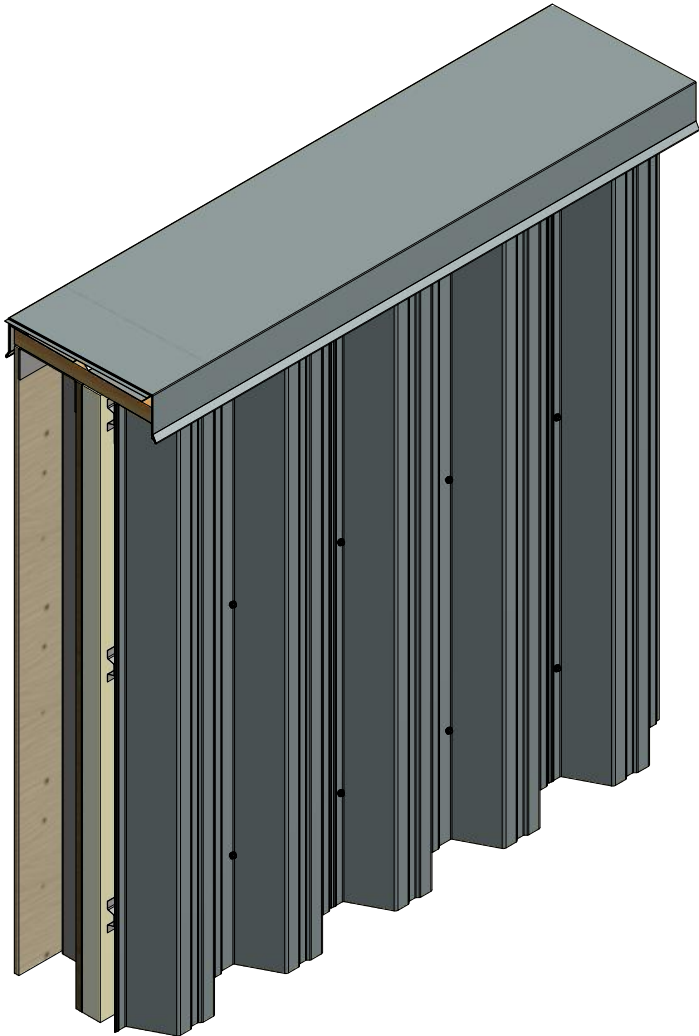
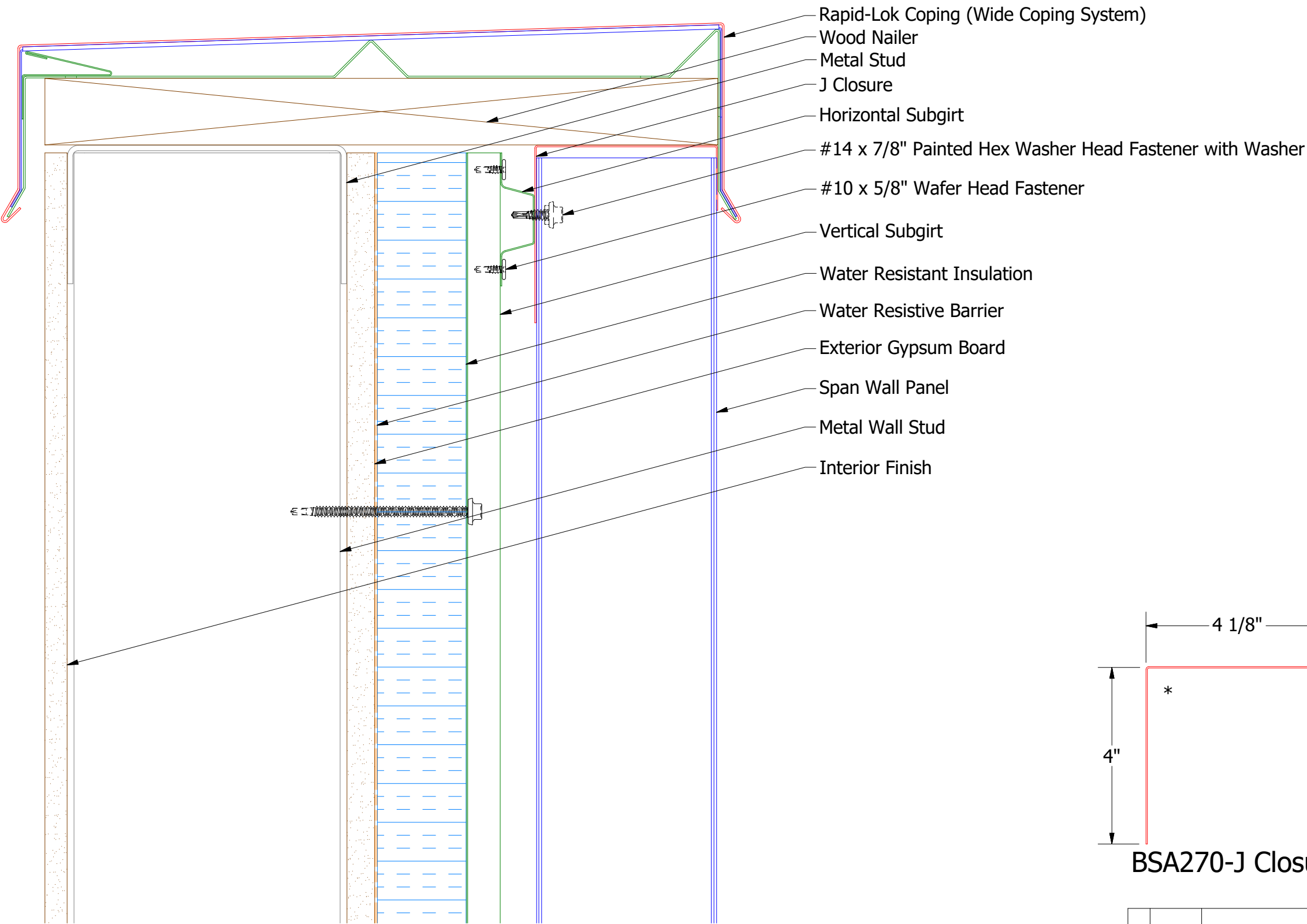


ATAS INTERNATIONAL, INC  
Allentown PA  
610-395-8445  
Mesa AZ  
480-558-7210

TITLE			
Span Wall Outside Corner Cap Detail			
DWG. NO.	DR	KRK	DATE
	APP		3/6/2015
MATERIAL		SH. SIZE	SCALE
		B	X:X

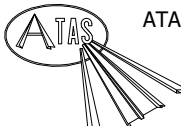
REV. NO.	DATE	DESCRIPTION OF REVISION	BY	APP

# Vertical Panel

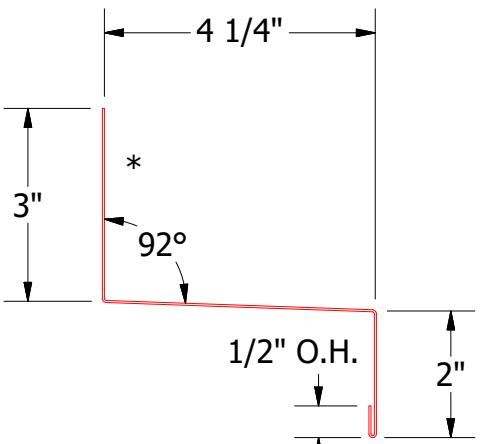
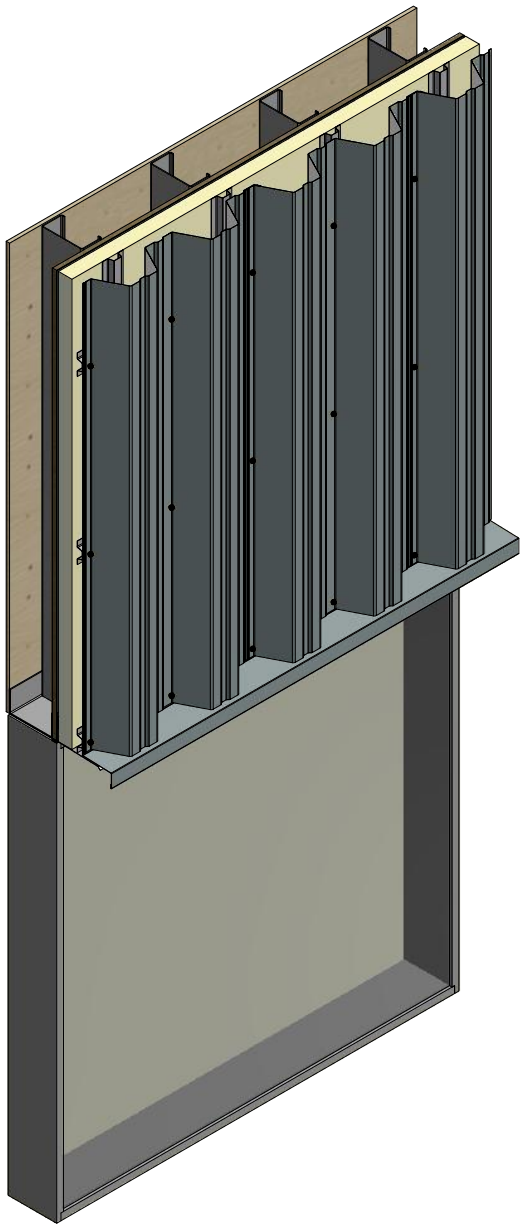
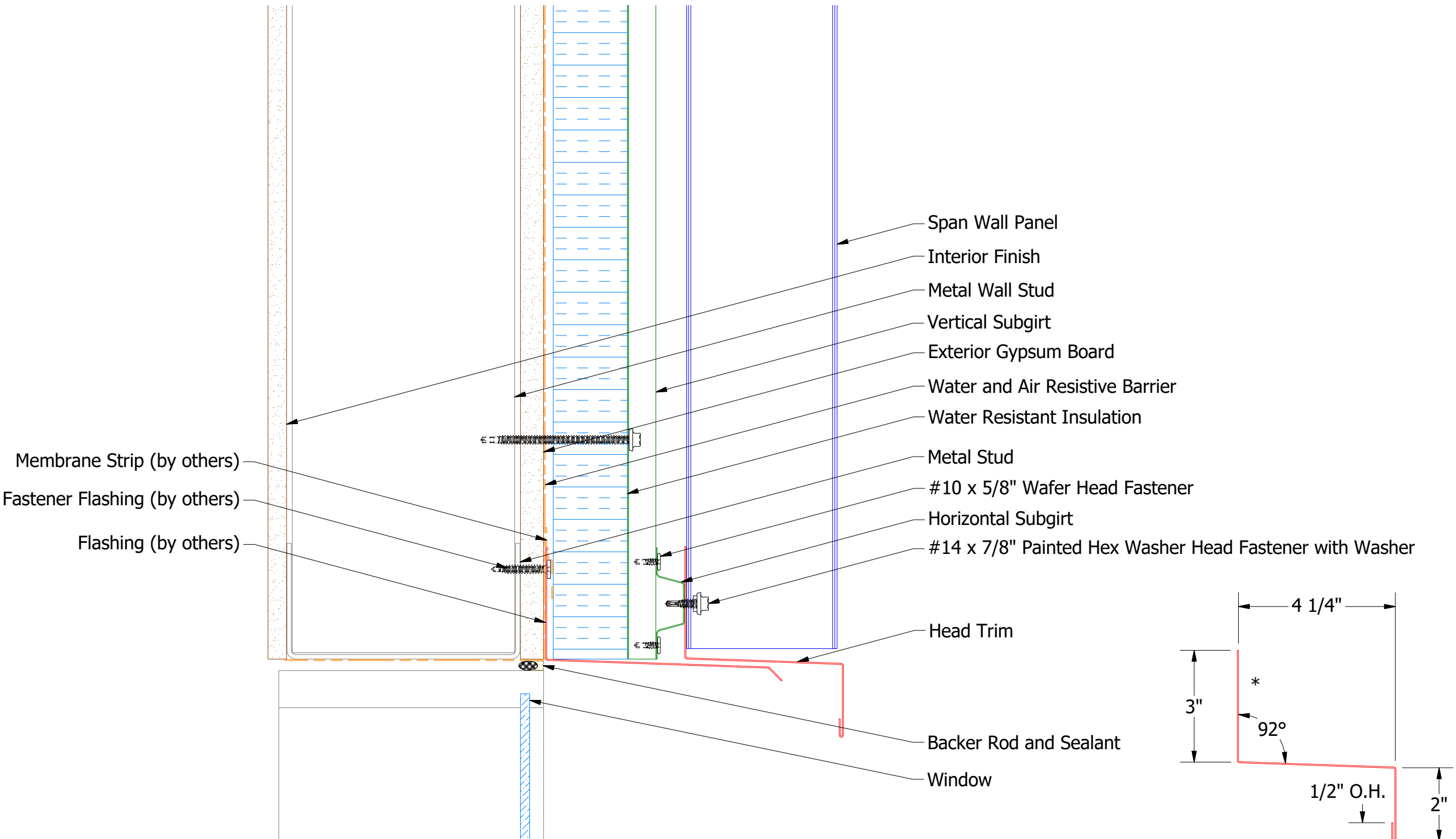


BSA270-J Closure

## 2 Stage Method of Weather Proofing

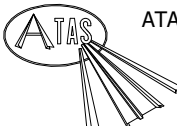
		ATAS INTERNATIONAL, INC Allentown PA 610-395-8445 Mesa AZ 480-558-7210	
TITLE Span Wall Top of Wall Detail			
DWG. NO.		DR KRK	DATE 3/9/2015
MATERIAL		APP	DATE
		SH. SIZE B	SCALE X:X

Vertical Panel

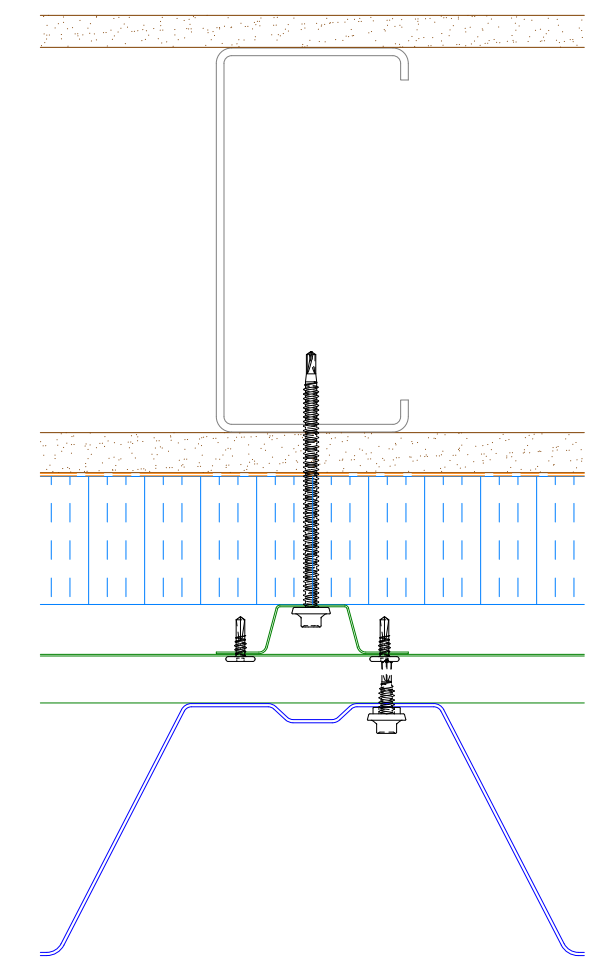
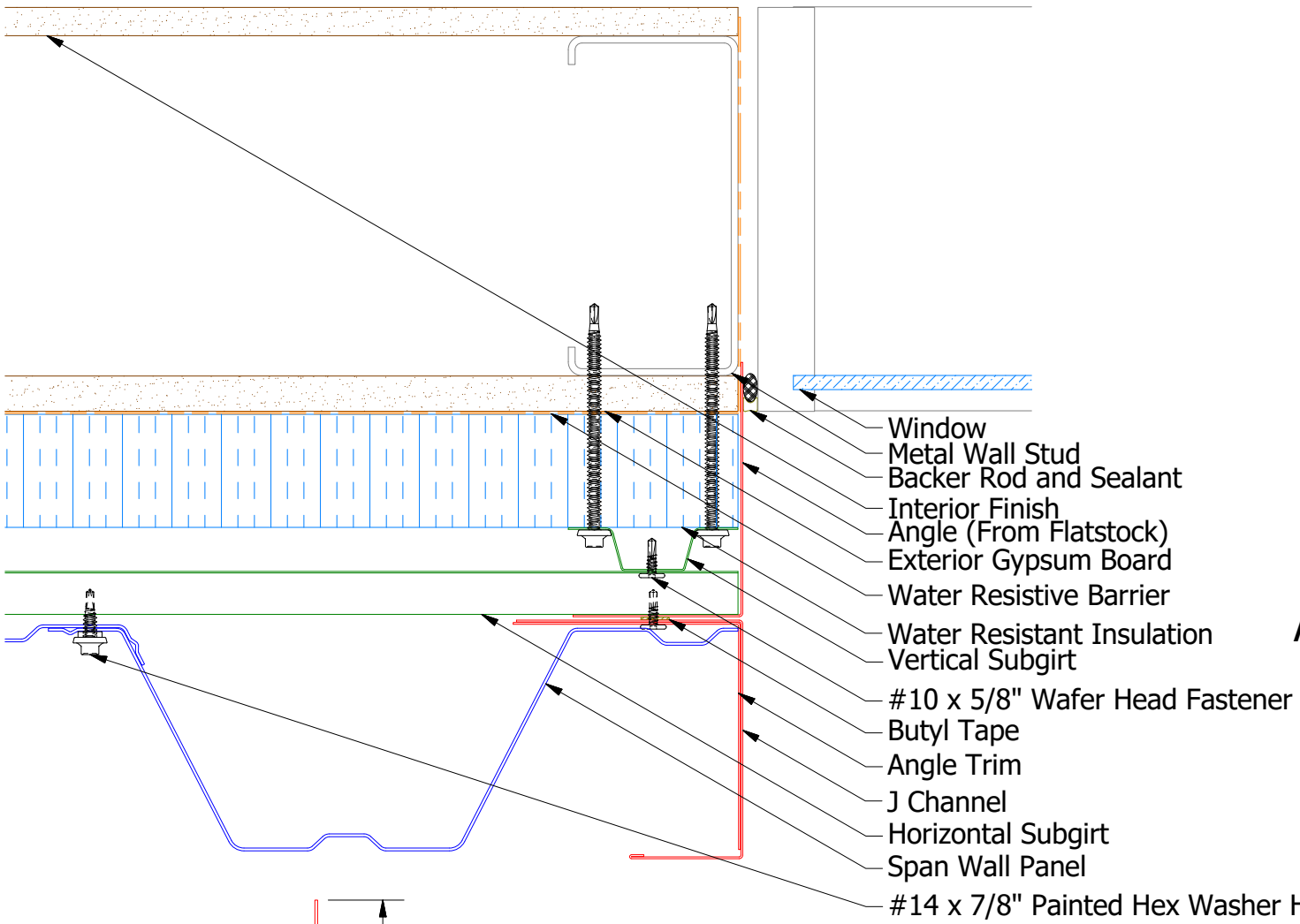


BSA550-Head Trim

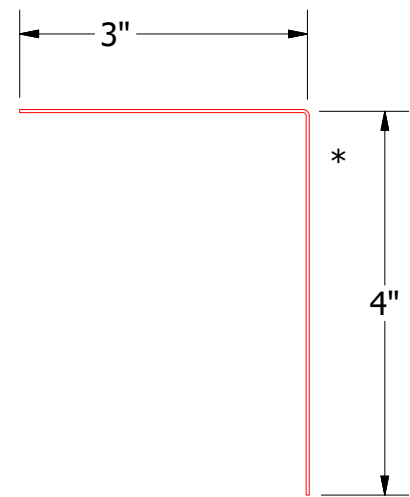
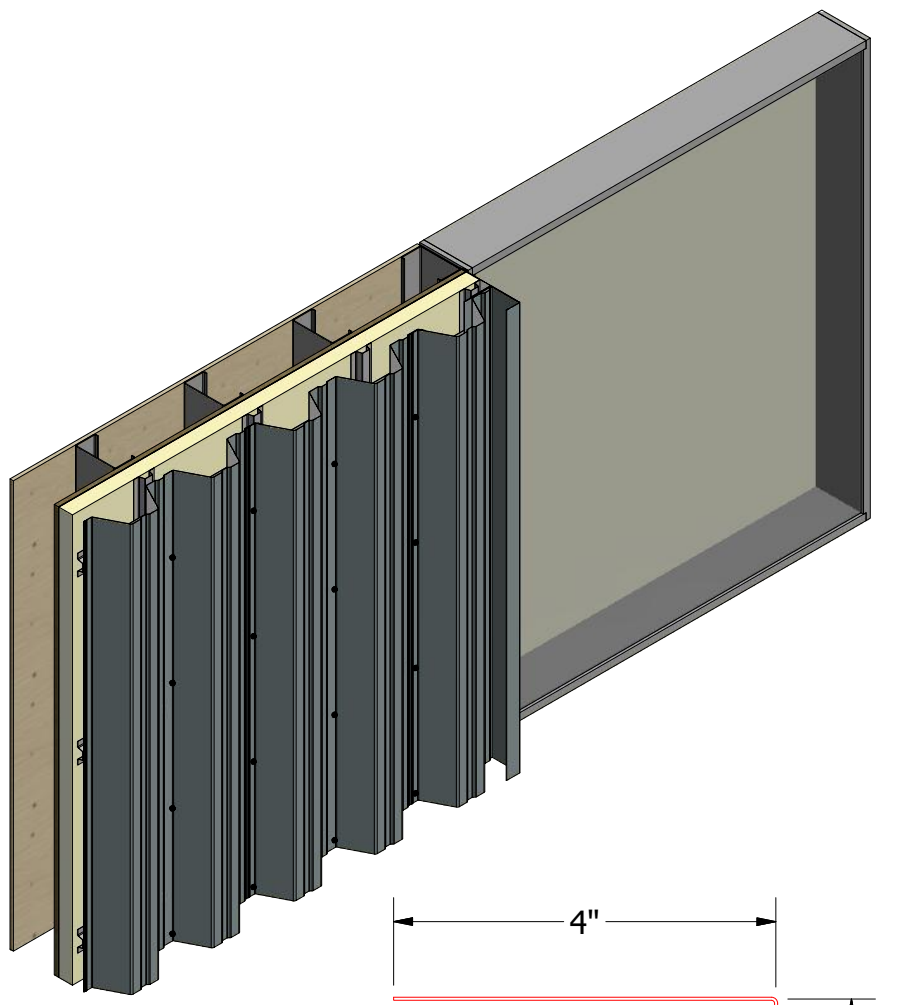
2 Stage Method of Weather Proofing

		ATAS INTERNATIONAL, INC Allentown PA 610-395-8445 Mesa AZ 480-558-7210	
TITLE Span Wall Panel Head Detail			
DWG. NO.		DR KRK	DATE 3/6/2015
MATERIAL		APP	DATE
		SH. SIZE B	SCALE X:X

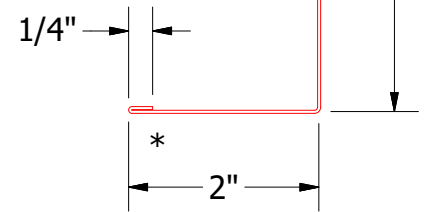
Vertical Panel



Alternate Subgirt Orientation

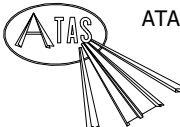


BSA680-Angle Trim



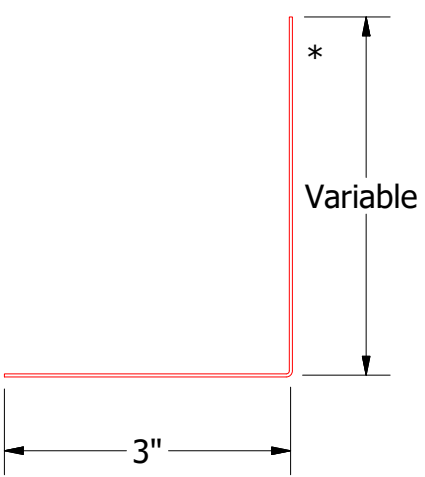
BSA140-J Channel

2 Stage Method of Weather Proofing



ATAS INTERNATIONAL, INC  
Allentown PA  
610-395-8445  
Mesa AZ  
480-558-7210

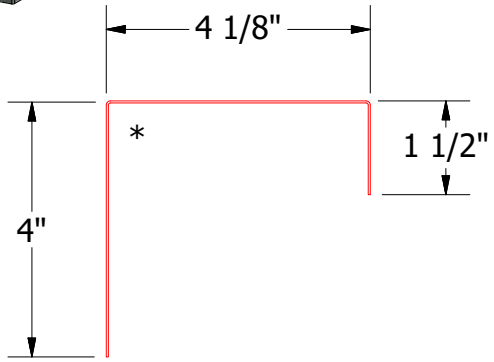
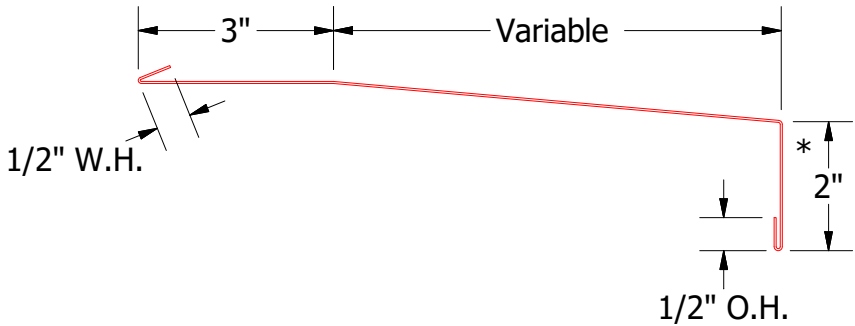
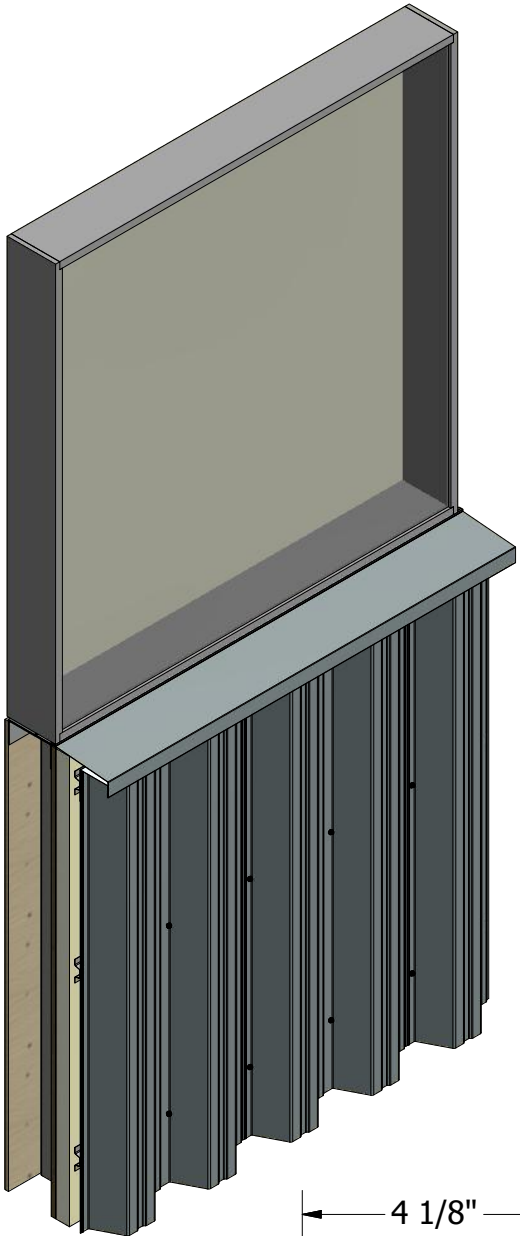
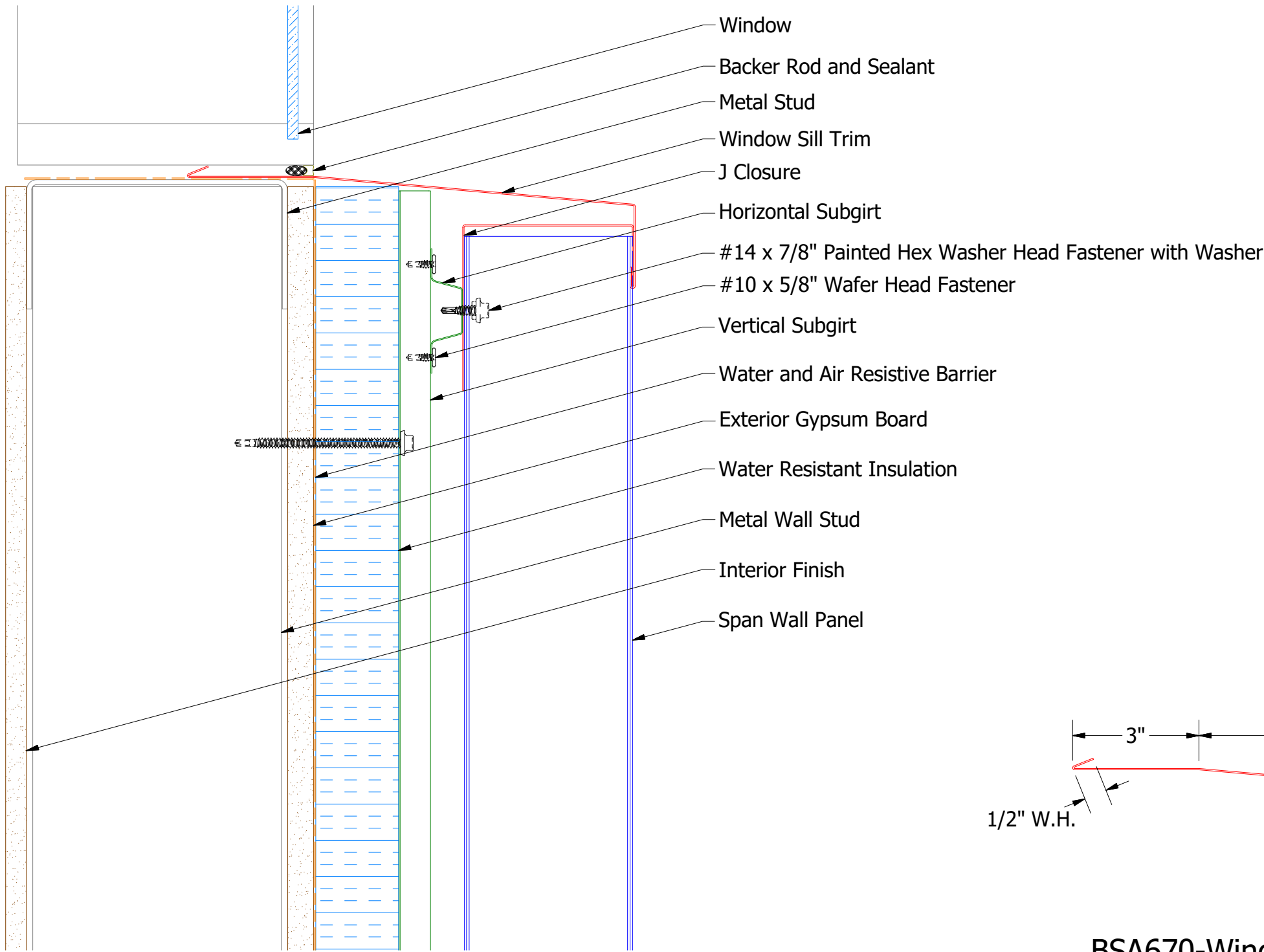
TITLE			
Span Wall Jamb Detail			
DWG. NO.	DR	KRK	DATE
	APP		3/9/2015
MATERIAL		SH. SIZE	SCALE
		B	X:X



Angle

Note: \* denotes color side.

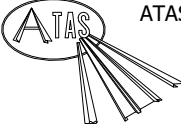
Vertical Panel



BSA670-Window Sill Trim

BSA270-J Closure

2 Stage Method of Weather Proofing



ATAS INTERNATIONAL, INC  
Allentown PA  
610-395-8445  
Mesa AZ  
480-558-7210

TITLE				Span Wall Window Sill Detail	
DWG. NO.		DR	KRK	DATE	3/9/2015
MATERIAL		APP		DATE	
REV. NO.	DATE	DESCRIPTION OF REVISION	BY	APP	SH. SIZE B SCALE X:X

REV. NO.	DATE	DESCRIPTION OF REVISION	BY	APP	