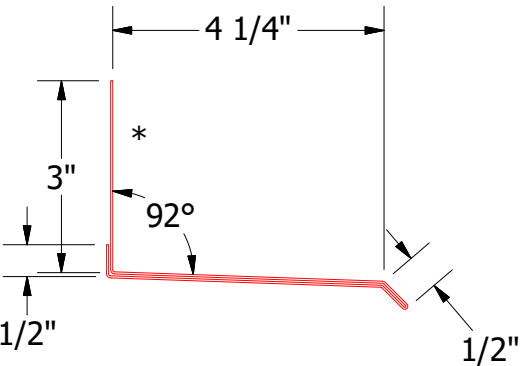
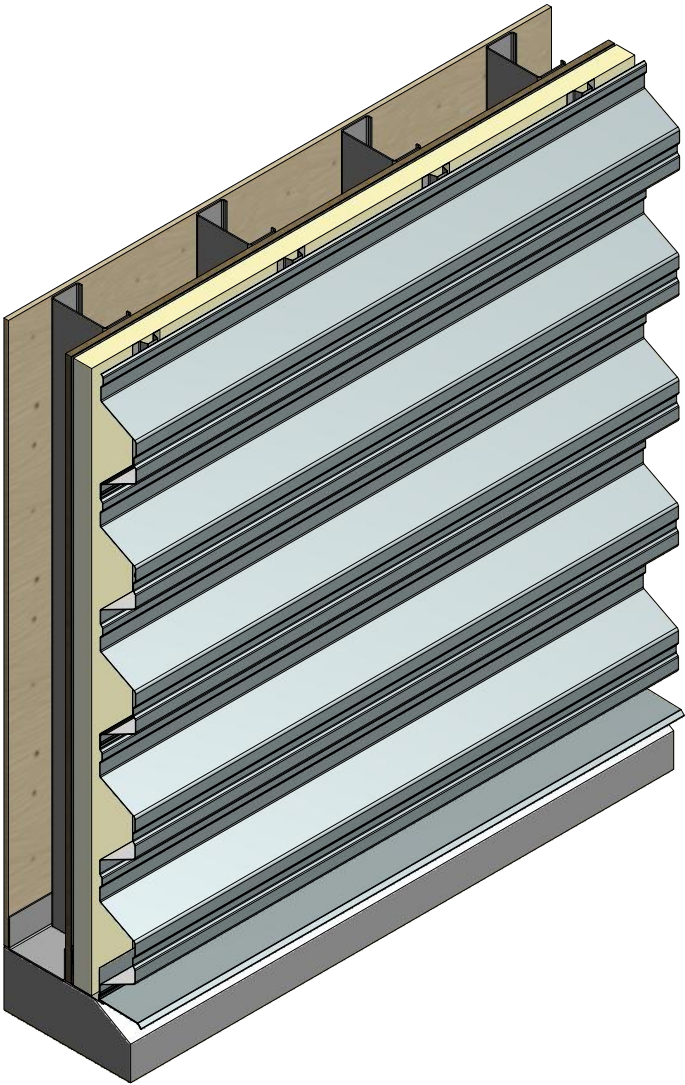
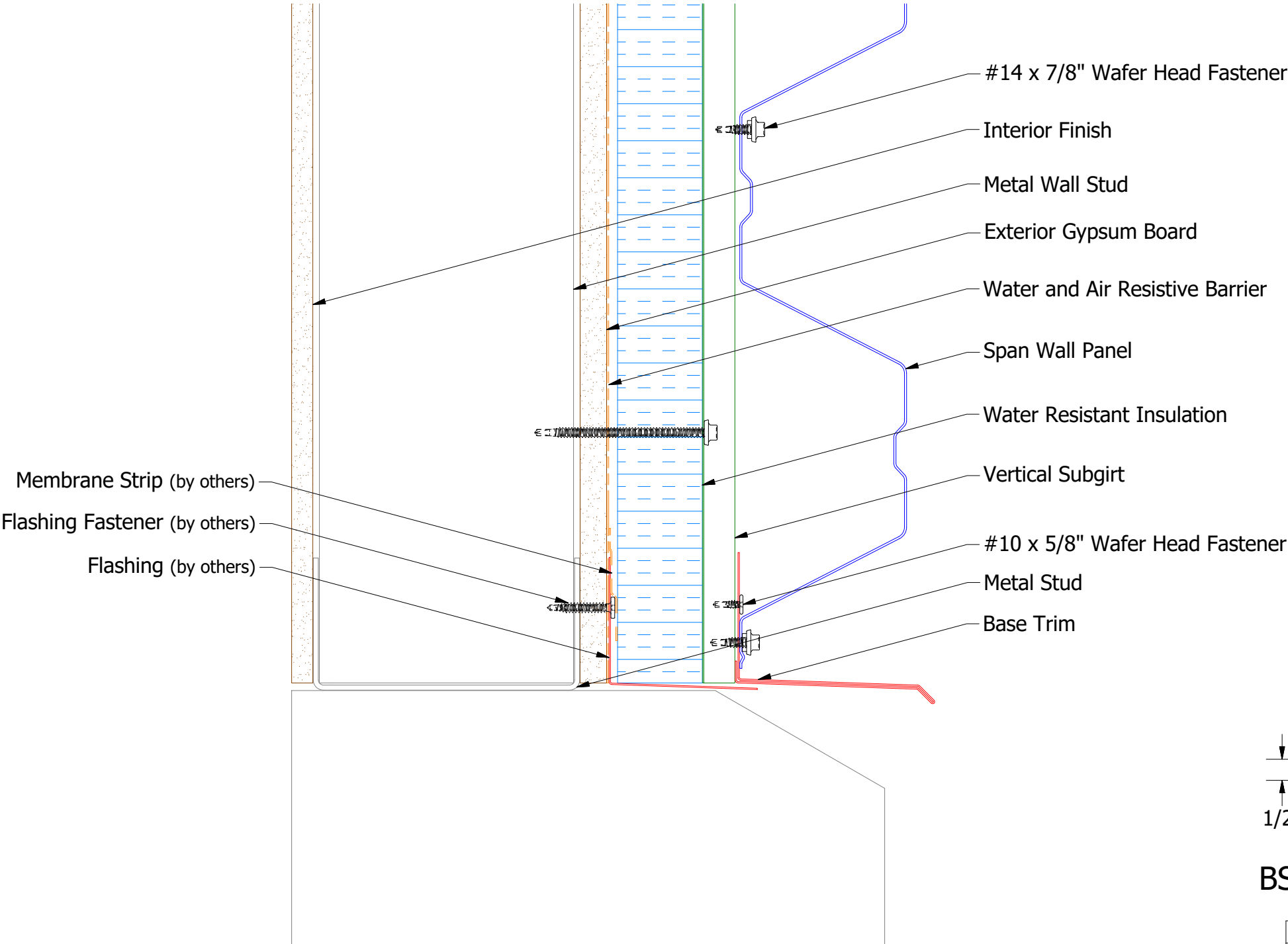


ATAS INTERNATIONAL, INC  
Allentown PA  
610-395-8445  
Mesa AZ  
480-558-7210


						Span Wall Panel Detail		
						DWG. NO.	DR	DATE
							DMR	12/16/2016
						MATERIAL	APP	DATE
REV. NO.	DATE	DESCRIPTION OF REVISION	BY	APP			SH. SIZE	SCALE
							B	X:X

Horizontal Panel

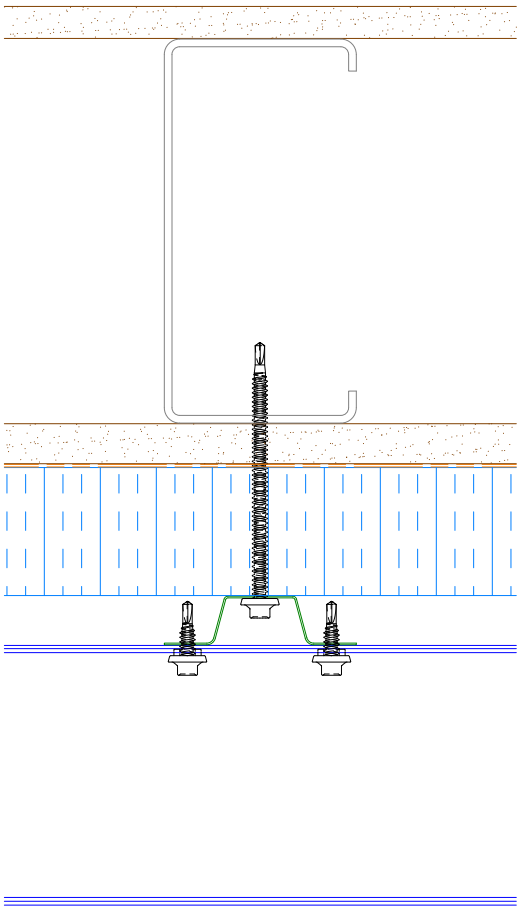
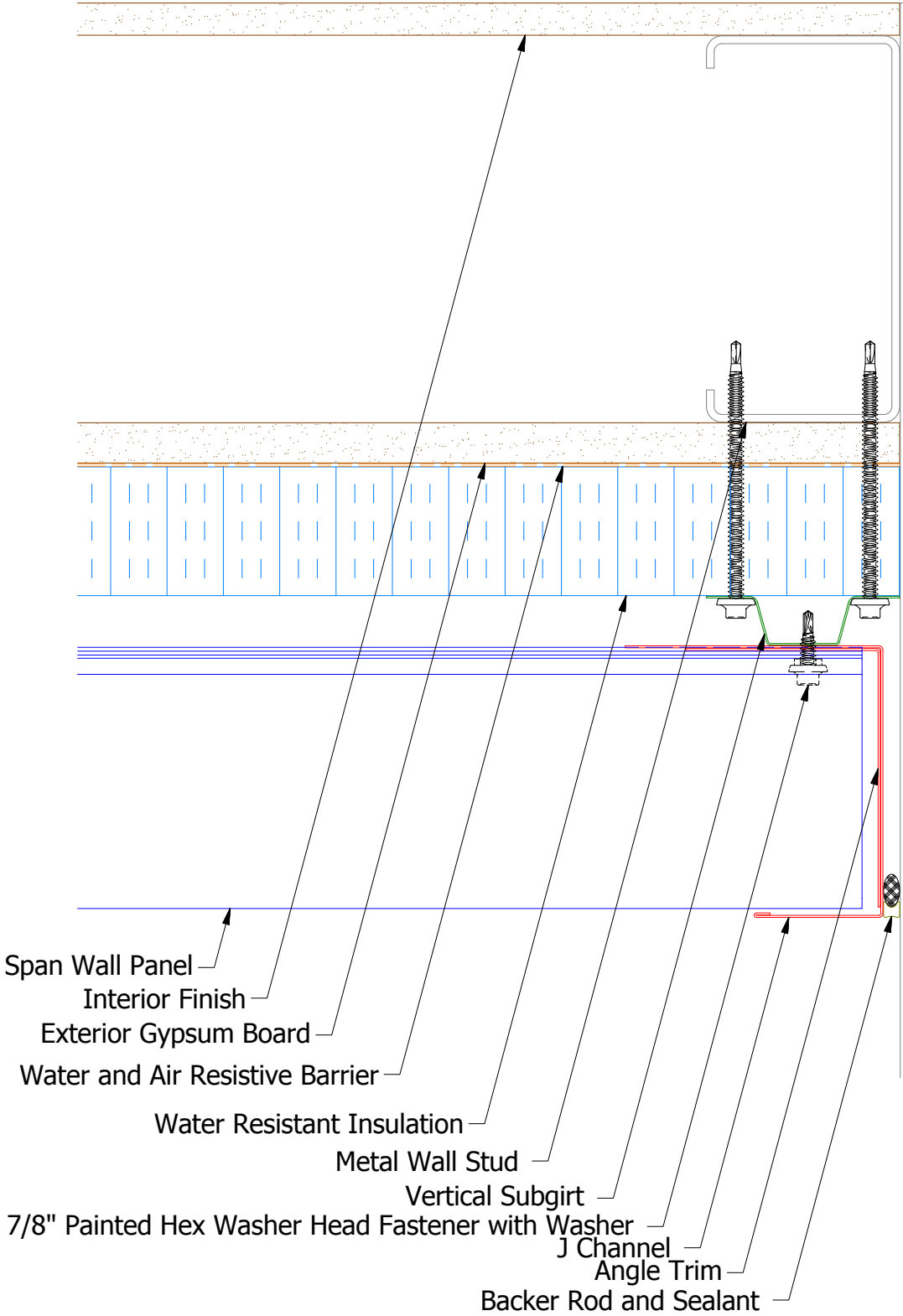


BSA661-Base Trim Standard

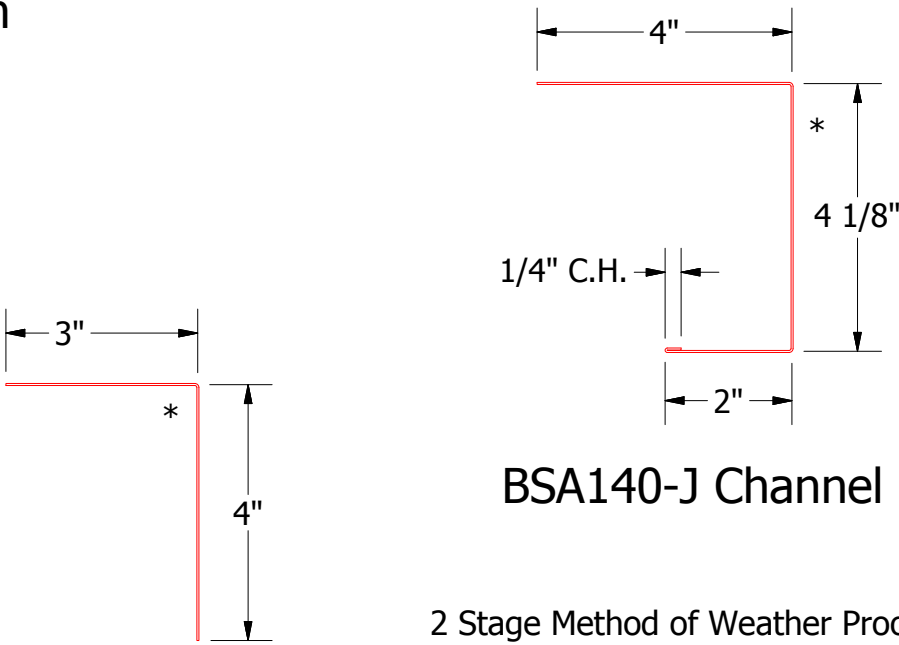
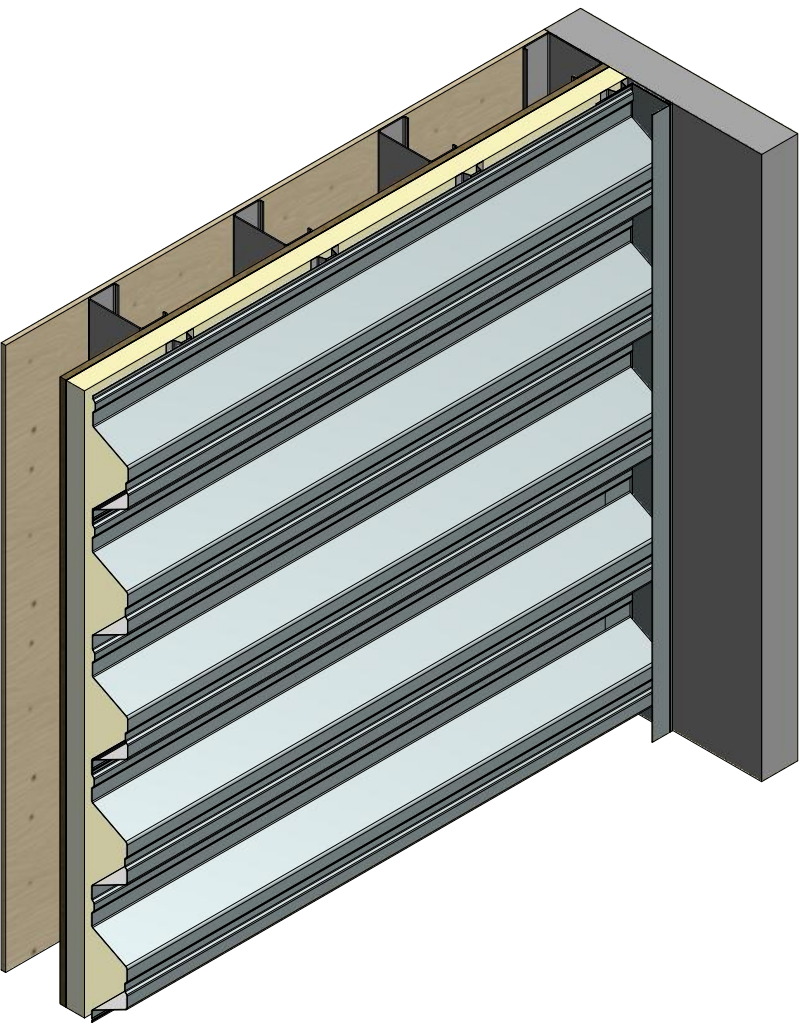
2 Stage Method of Weather Proofing

		ATAS INTERNATIONAL, INC Allentown PA 610-395-8445 Mesa AZ 480-558-7210	
TITLE Span Wall Panel Base Detail			
DWG. NO.		DR KRR	DATE 3/3/2015
MATERIAL		APP	DATE
		SH. SIZE B	SCALE X:X


Horizontal Panel



Alternate Subgirt Orientation



2 Stage Method of Weather Proofing

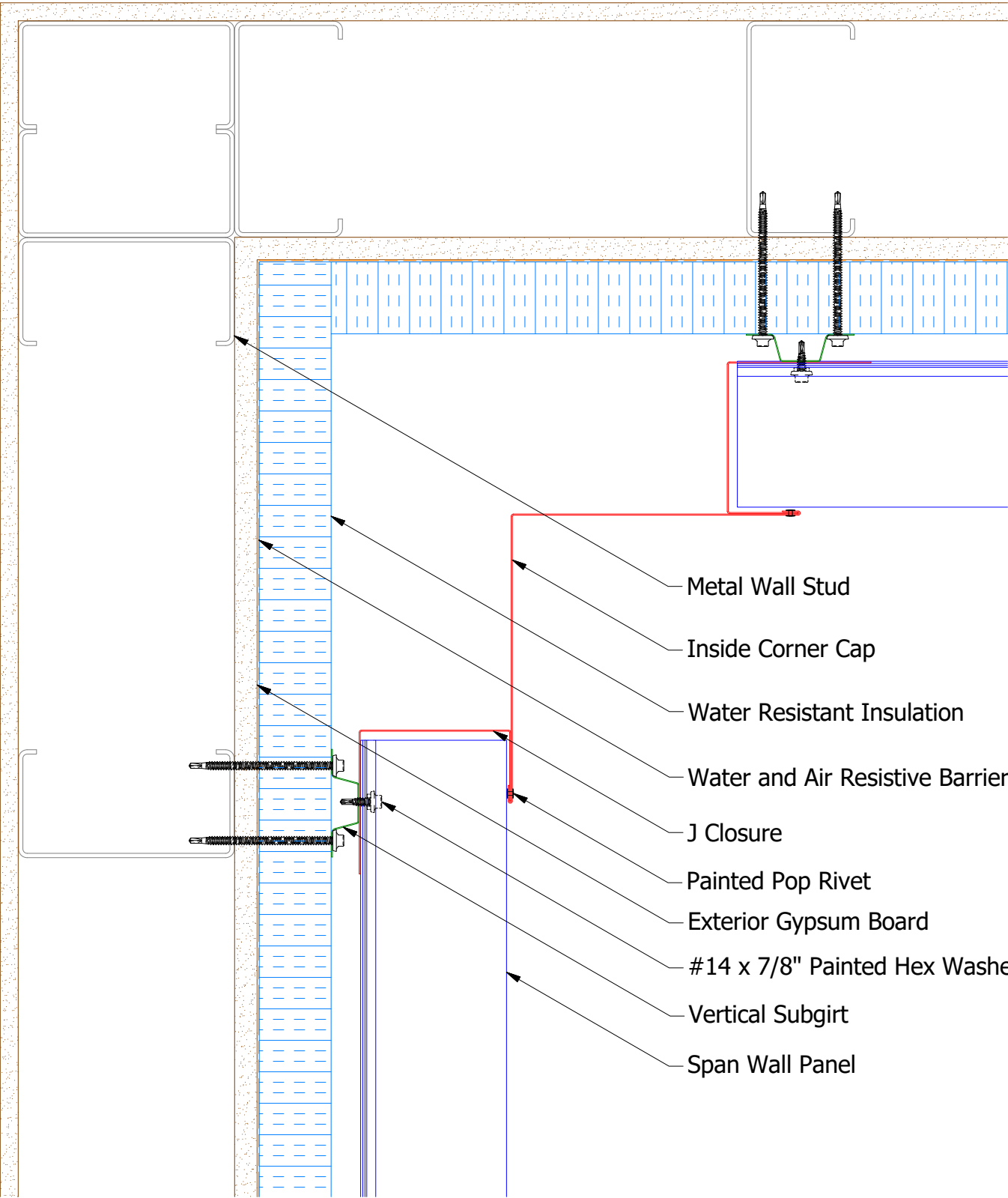


ATAS INTERNATIONAL, INC  
Allentown PA  
610-395-8445  
Mesa AZ  
480-558-7210

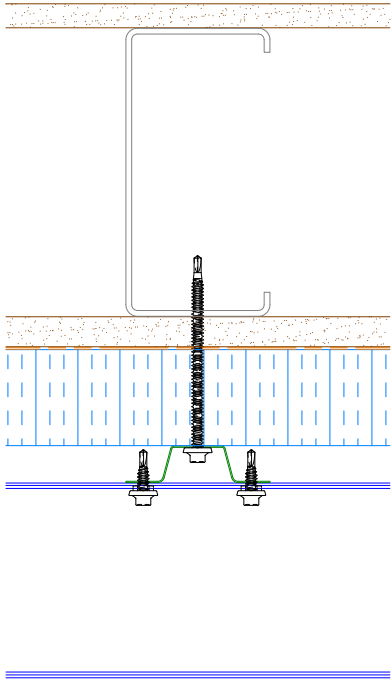
TITLE Span Wall Panel Endwall Detail			
DWG. NO.		DR KRK	DATE 3/5/2015
MATERIAL		APP	DATE
REV. NO.	DATE	DESCRIPTION OF REVISION	BY APP
SH. SIZE B	SCALE X:X		

REV. NO.	DATE	DESCRIPTION OF REVISION	BY	APP	

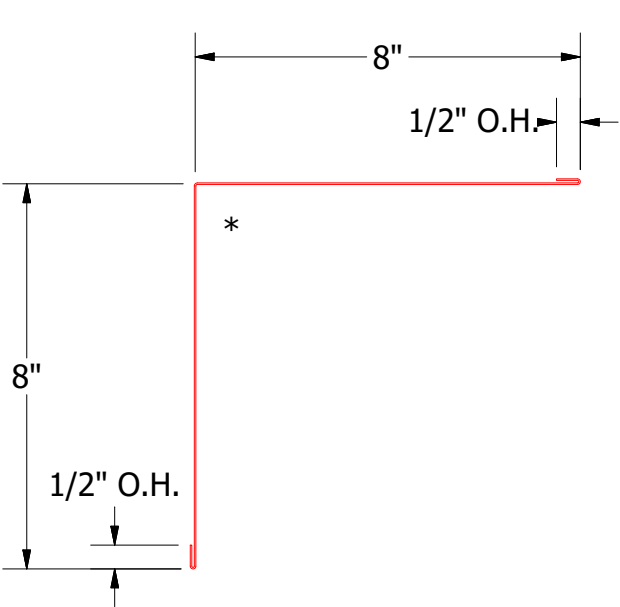
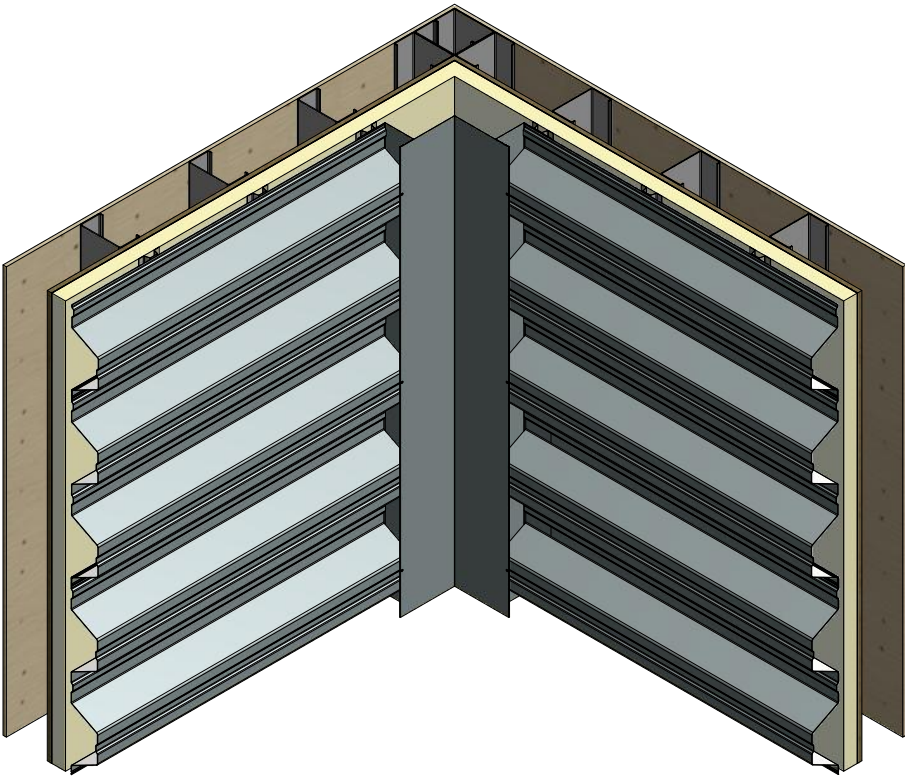
Horizontal Panel



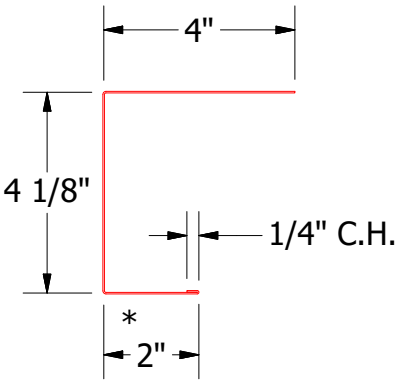
- Metal Wall Stud
- Inside Corner Cap
- Water Resistant Insulation
- Water and Air Resistive Barrier
- J Closure
- Painted Pop Rivet
- Exterior Gypsum Board
- #14 x 7/8" Painted Hex Washer Head Fastener with Washer
- Vertical Subgirt
- Span Wall Panel



Alternate Subgirt Orientation

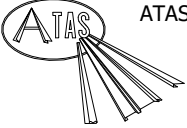


BSA600-Inside Corner Cap



BSA140-J Channel

2 Stage Method of Weather Proofing



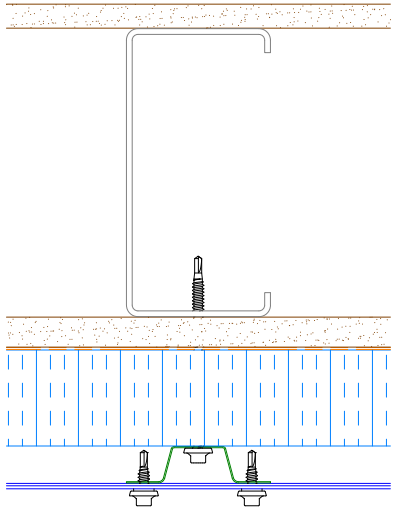
ATAS INTERNATIONAL, INC  
Allentown PA  
610-395-8445  
Mesa AZ  
480-558-7210

TITLE			
Span Wall Inside Corner Cap Detail			
DWG. NO.	DR	KRK	DATE
	APP		3/6/2015
MATERIAL		SH. SIZE	SCALE
		B	X:X

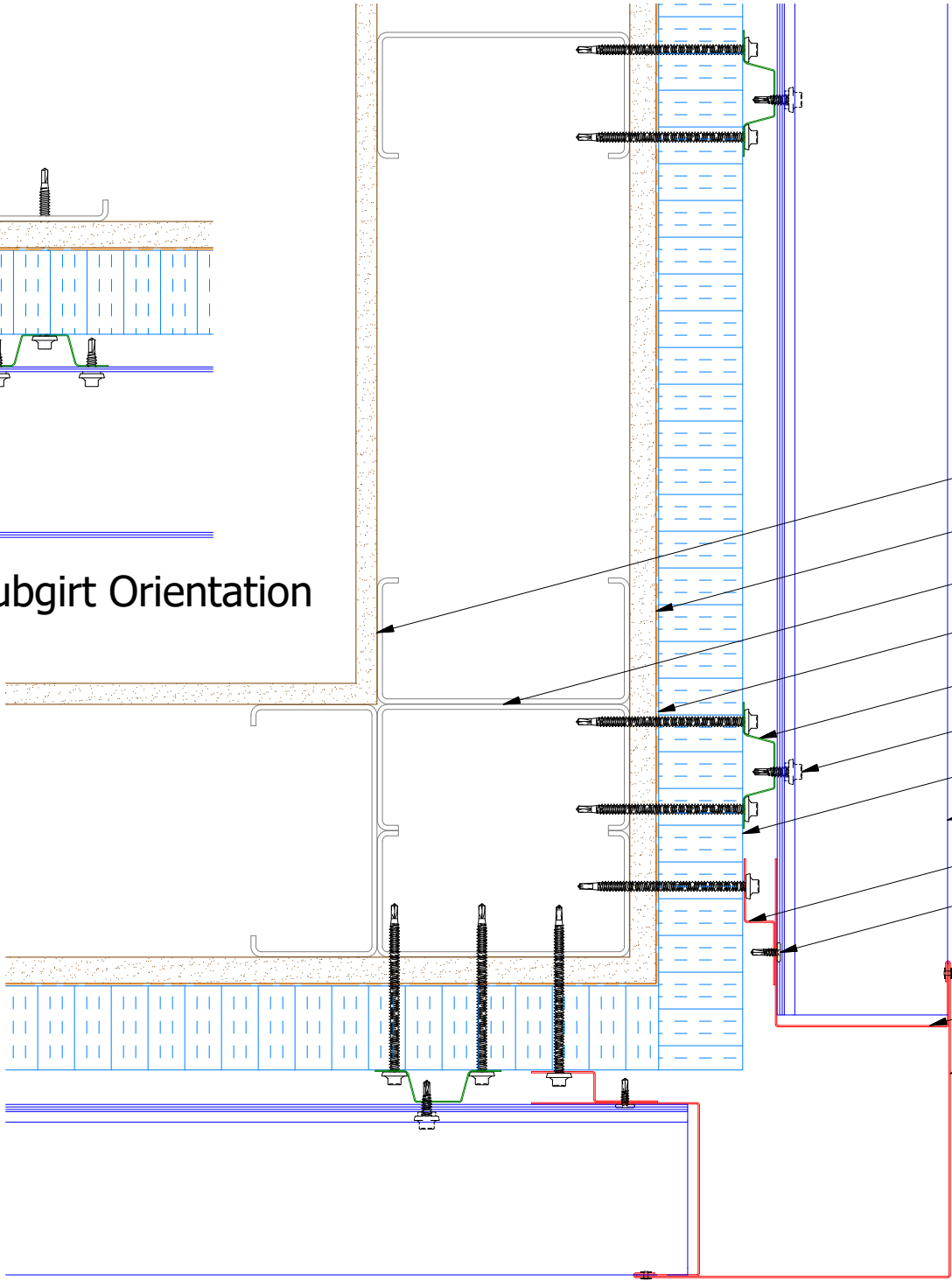
REV. NO.	DATE	DESCRIPTION OF REVISION	BY	APP



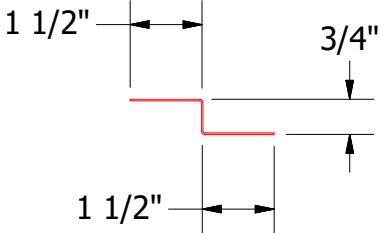
Horizontal Panel



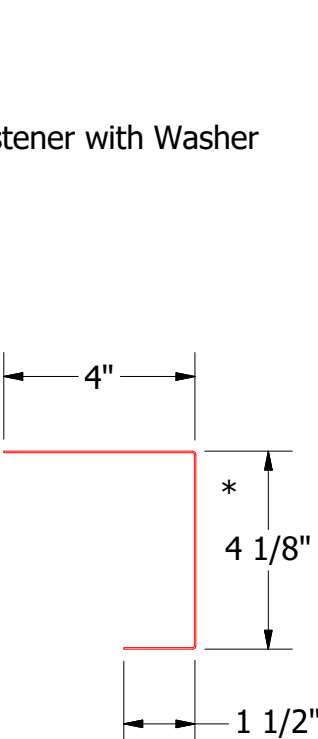
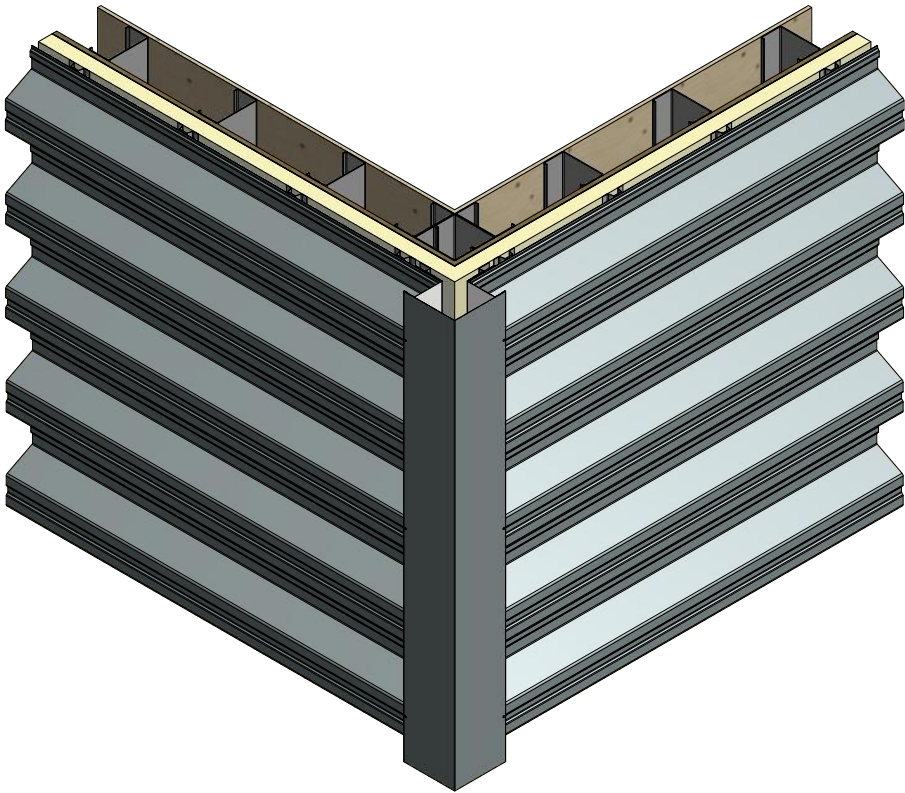
Alternate Subgirt Orientation



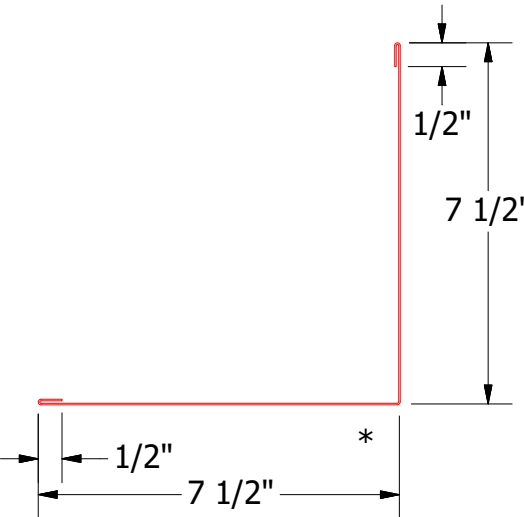
- Interior Finish
- Exterior Gypsum Board
- Metal Wall Stud
- Water and Air Resistive Barrier
- Vertical Subgirt
- #14 x 7/8" Painted Hex Washer Head Fastener with Washer
- Water Resistant Insulation
- Span Wall Panel
- Support Z
- #10 x 5/8" Wafer Head Fastener
- Painted Pop Rivet (Stainless Steel)
- J Closure
- Outside Corner Cap



BSA681-Support Z




BSA270-J Closure



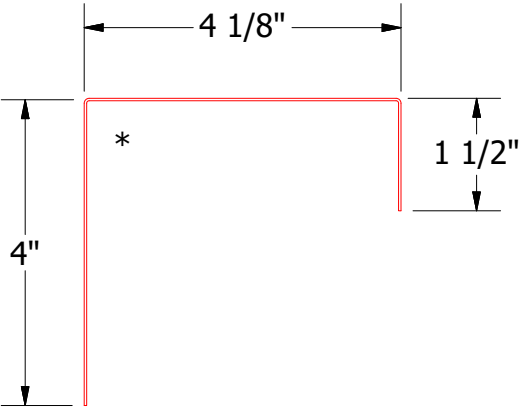
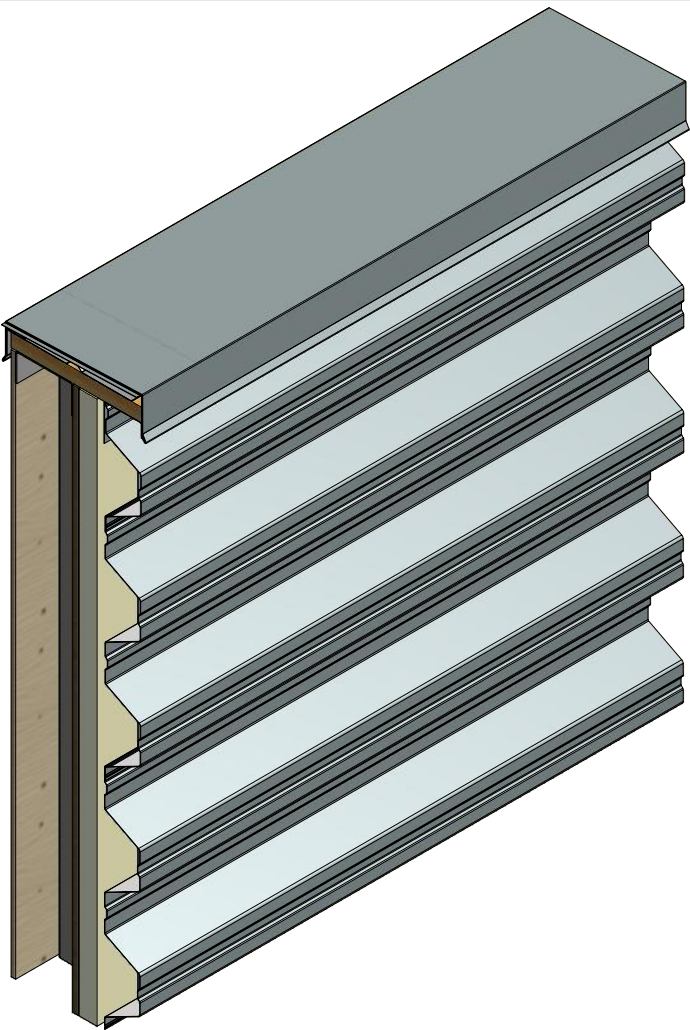
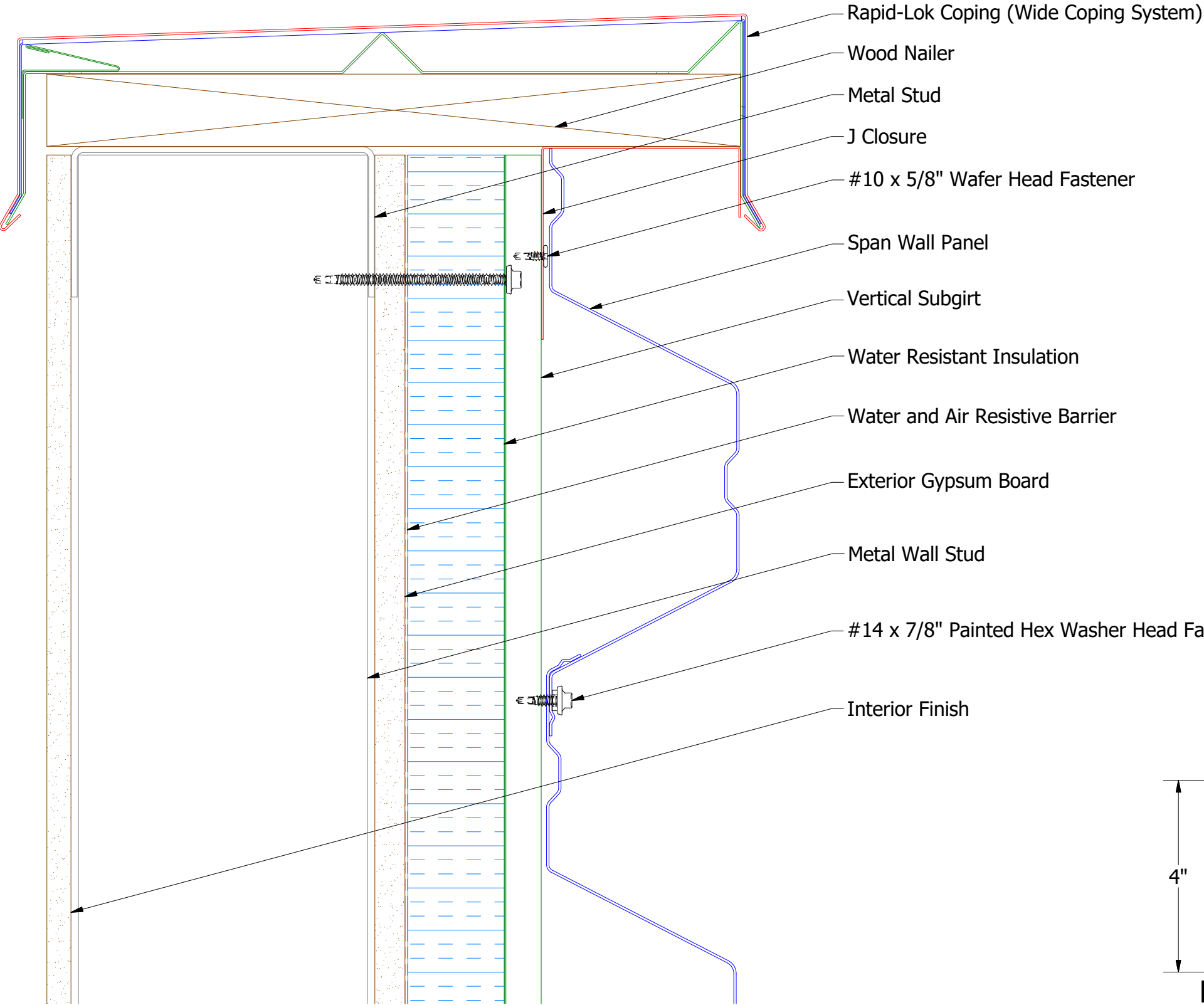
BSA610-Outside Corner Cap

2 Stage Method of Weather Proofing

		ATAS INTERNATIONAL, INC	
		Allentown PA 610-395-8445 Mesa AZ 480-558-7210	
TITLE			
Span Wall Outside Corner Cap Detail			
DWG. NO.		DR	DATE
		KRK	3/6/2015
MATERIAL		APP	DATE
		SH. SIZE	B
		SCALE	X:X

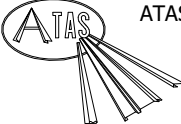
REV. NO.	DATE	DESCRIPTION OF REVISION	BY	APP

Horizontal Panel



BSA270-J Closure

2 Stage Method of Weather Proofing

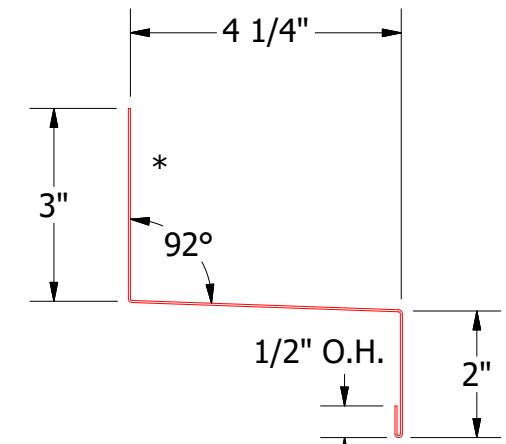
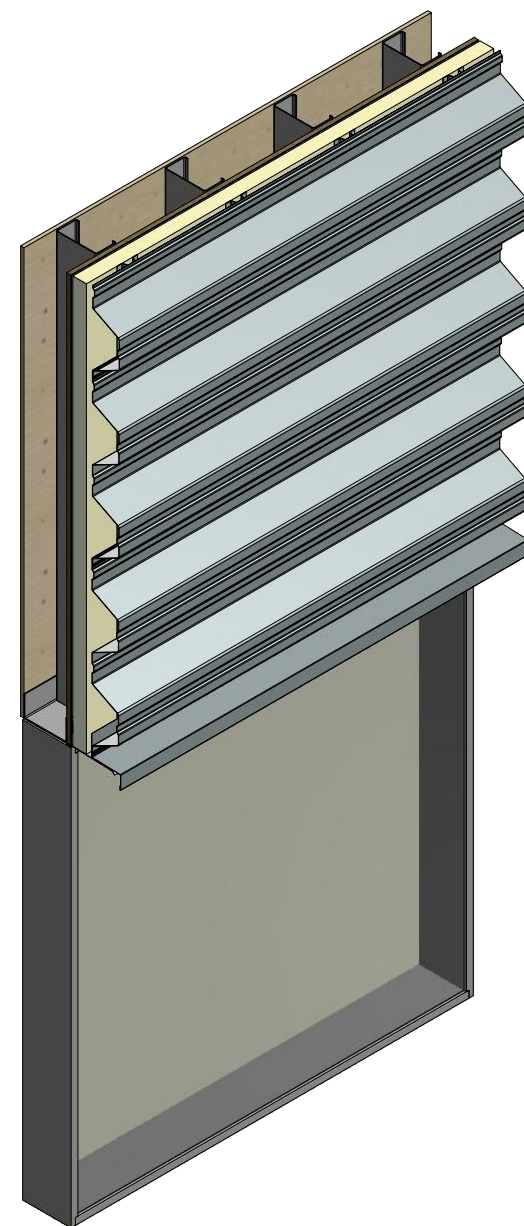
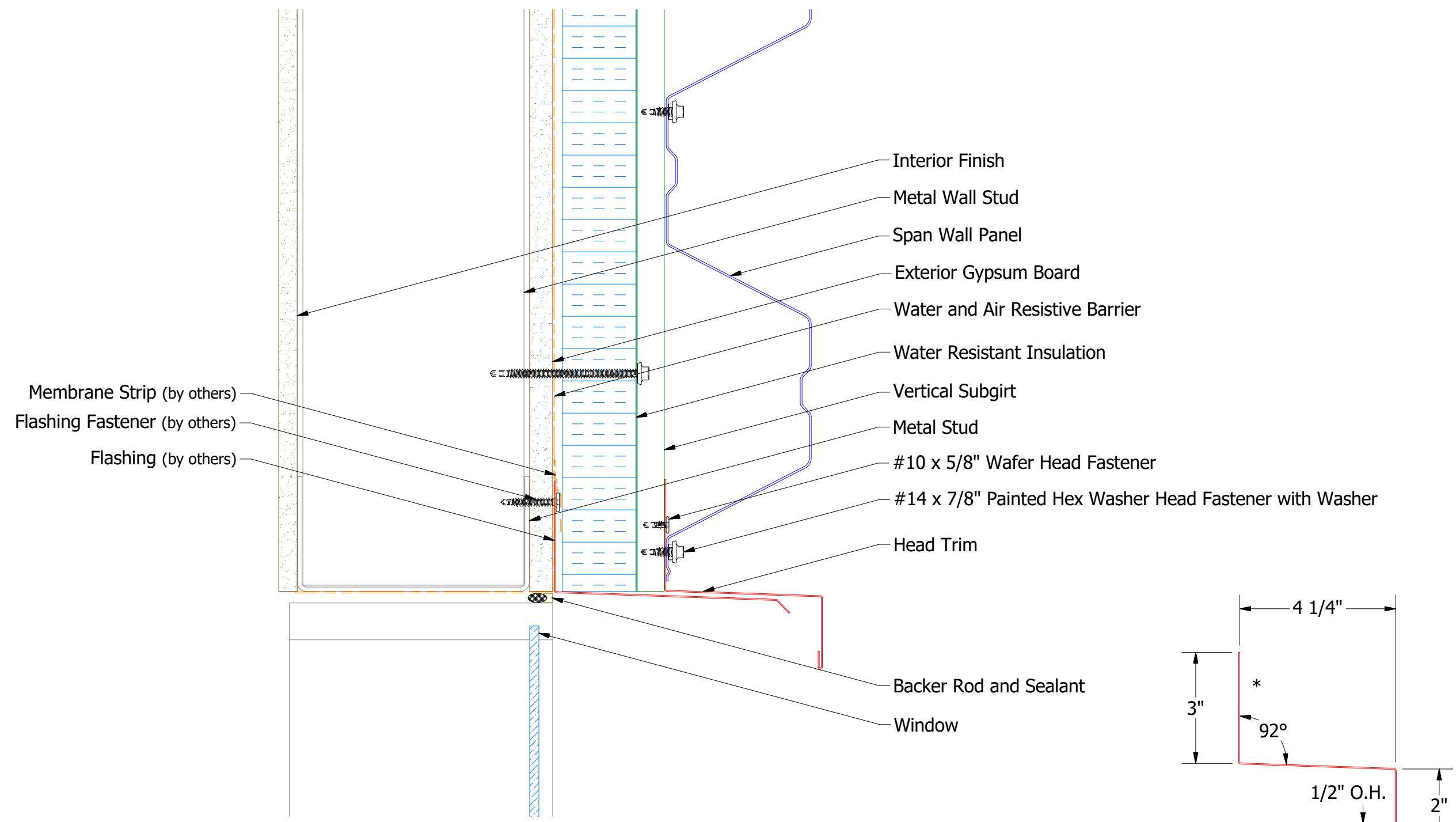


ATAS INTERNATIONAL, INC  
Allentown PA  
610-395-8445  
Mesa AZ  
480-558-7210

TITLE			
Span Wall Top of Wall Detail			
DWG. NO.		DR	DATE
		KRK	3/9/2015
MATERIAL		APP	DATE
		SH. SIZE	SCALE
		B	X:X

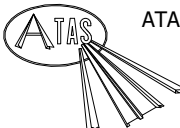
REV. NO.	DATE	DESCRIPTION OF REVISION	BY	APP

Horizontal Panel



BSA550-Head Trim

2 Stage Method of Weather Proofing

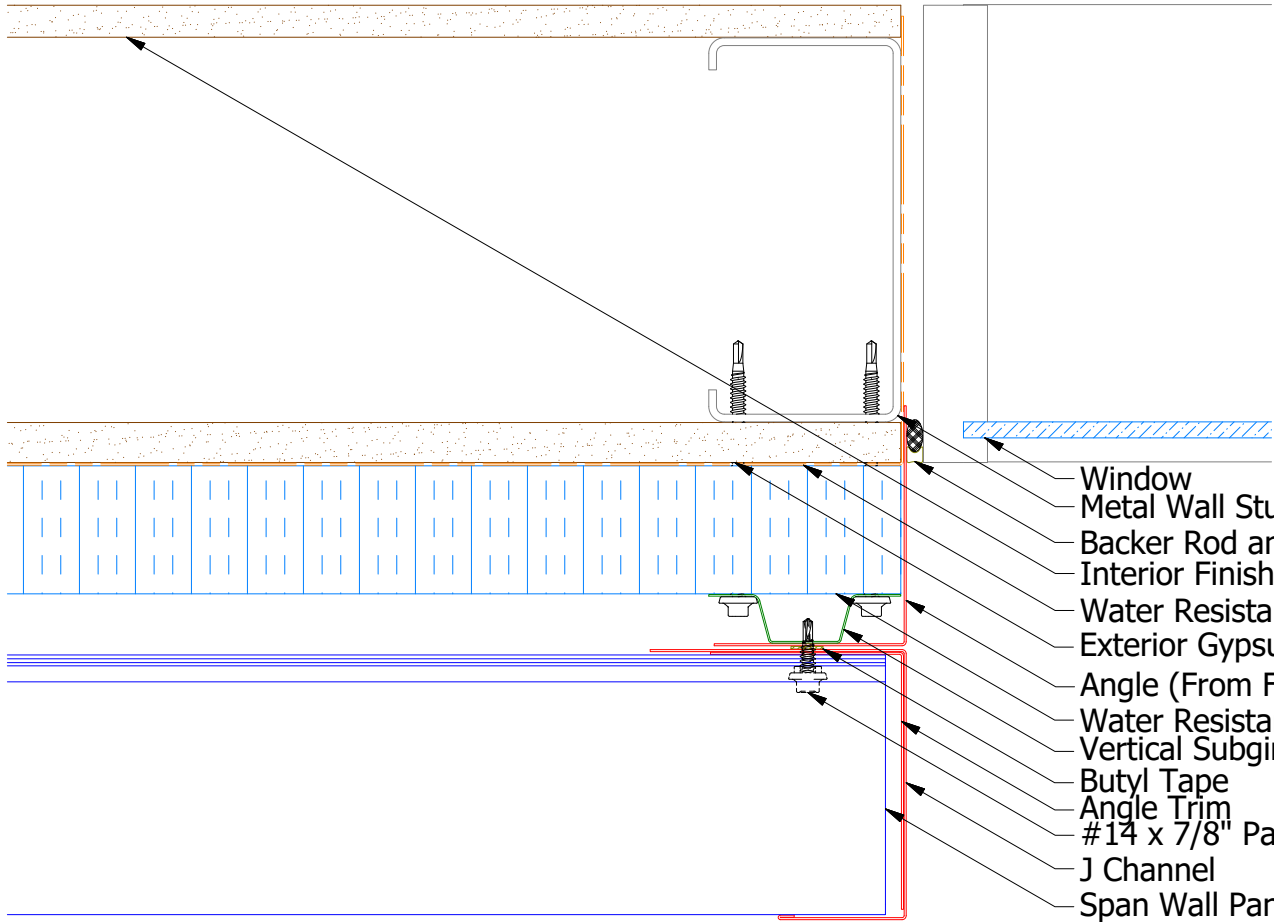


ATAS INTERNATIONAL, INC  
Allentown PA  
610-395-8445  
Mesa AZ  
480-558-7210

TITLE Span Wall Panel Head Detail			
DWG. NO.		DR KRK	DATE 3/6/2015
APP		DATE	
MATERIAL		SH. SIZE B	SCALE X:X

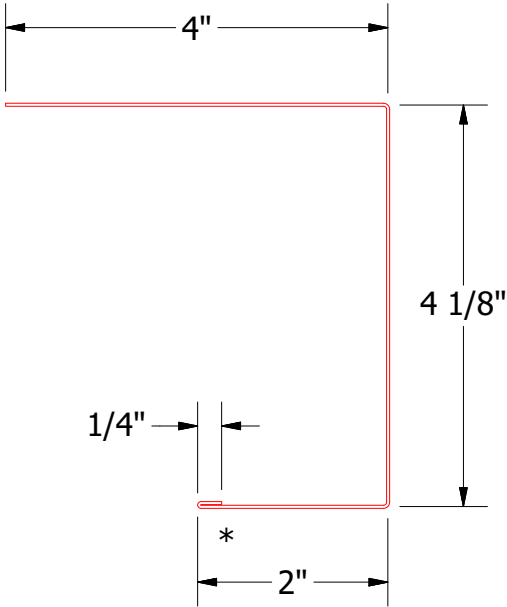
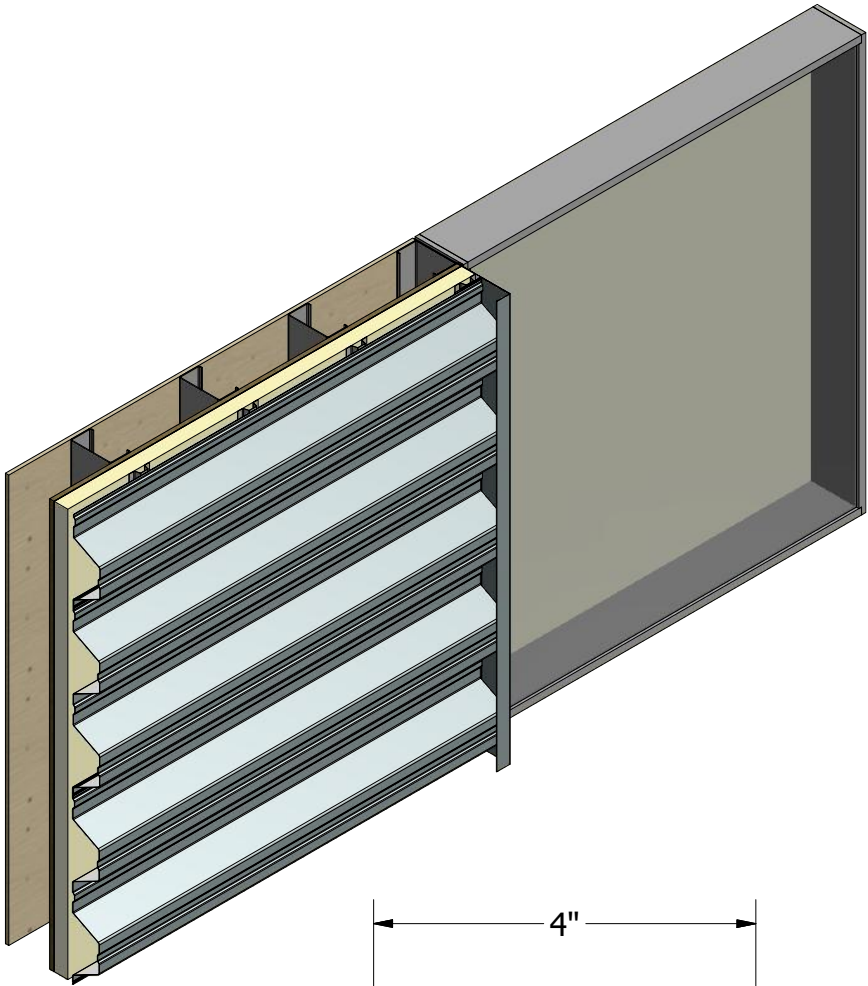
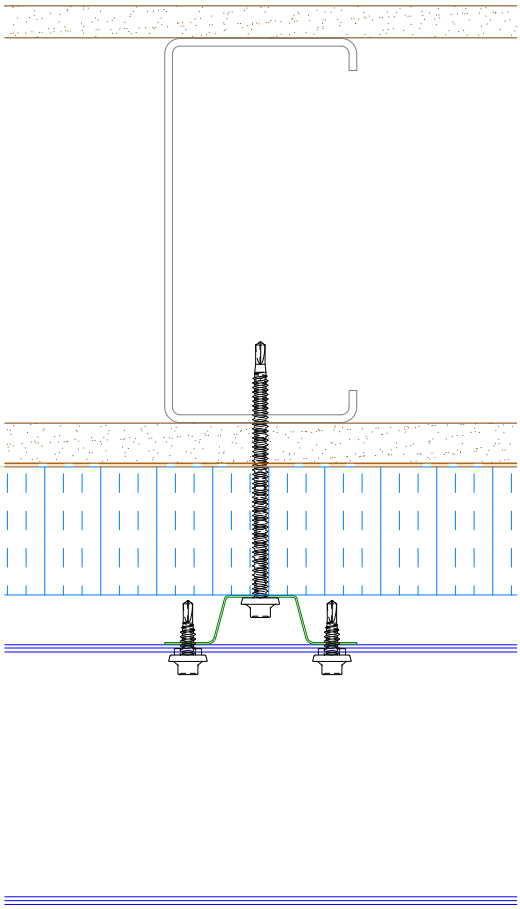
REV. NO.	DATE	DESCRIPTION OF REVISION	BY	APP

Horizontal Panel

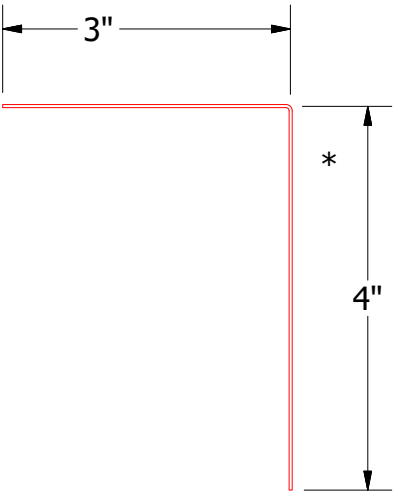


- Window
- Metal Wall Stud
- Backer Rod and Sealant
- Interior Finish
- Water Resistant Insulation
- Exterior Gypsum Board
- Angle (From Flatstock)
- Water Resistant Insulation
- Vertical Subgirt
- Butyl Tape
- Angle Trim
- #14 x 7/8" Painted Hex Washer Head Fastener with Washer
- J Channel
- Span Wall Panel

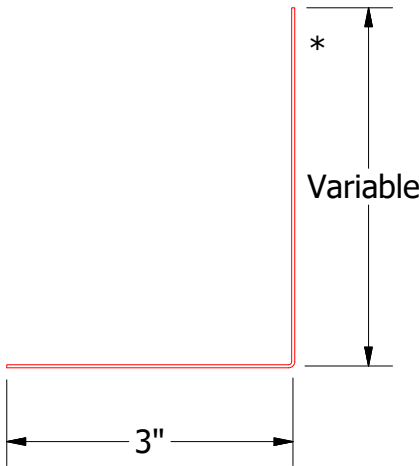
Alternative Subgirt Orientation



BSA140-J Channel




BSA680-Angle Trim



Angle

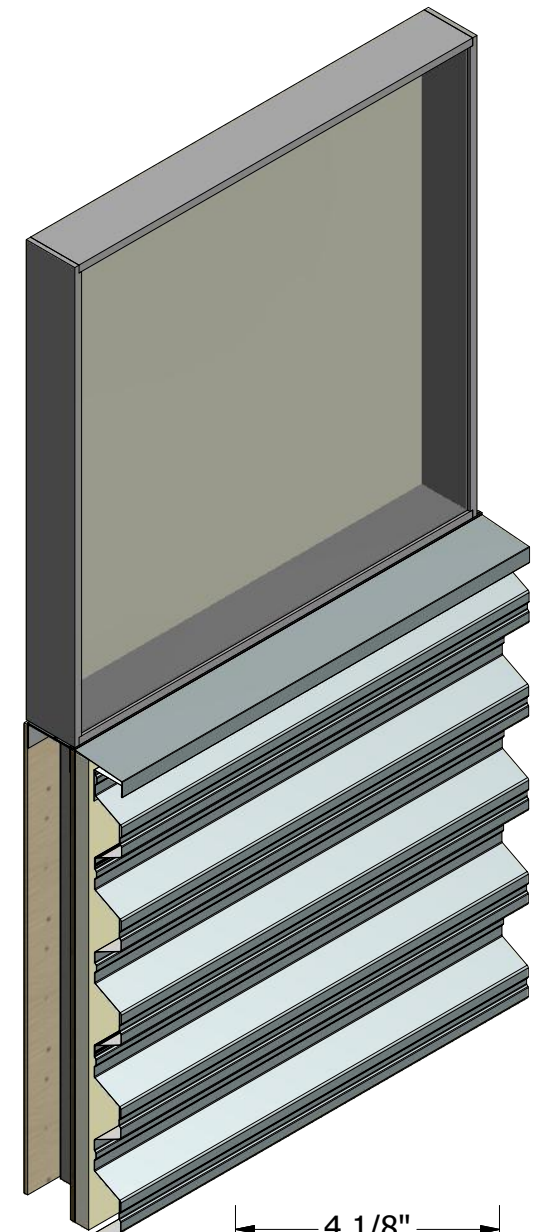
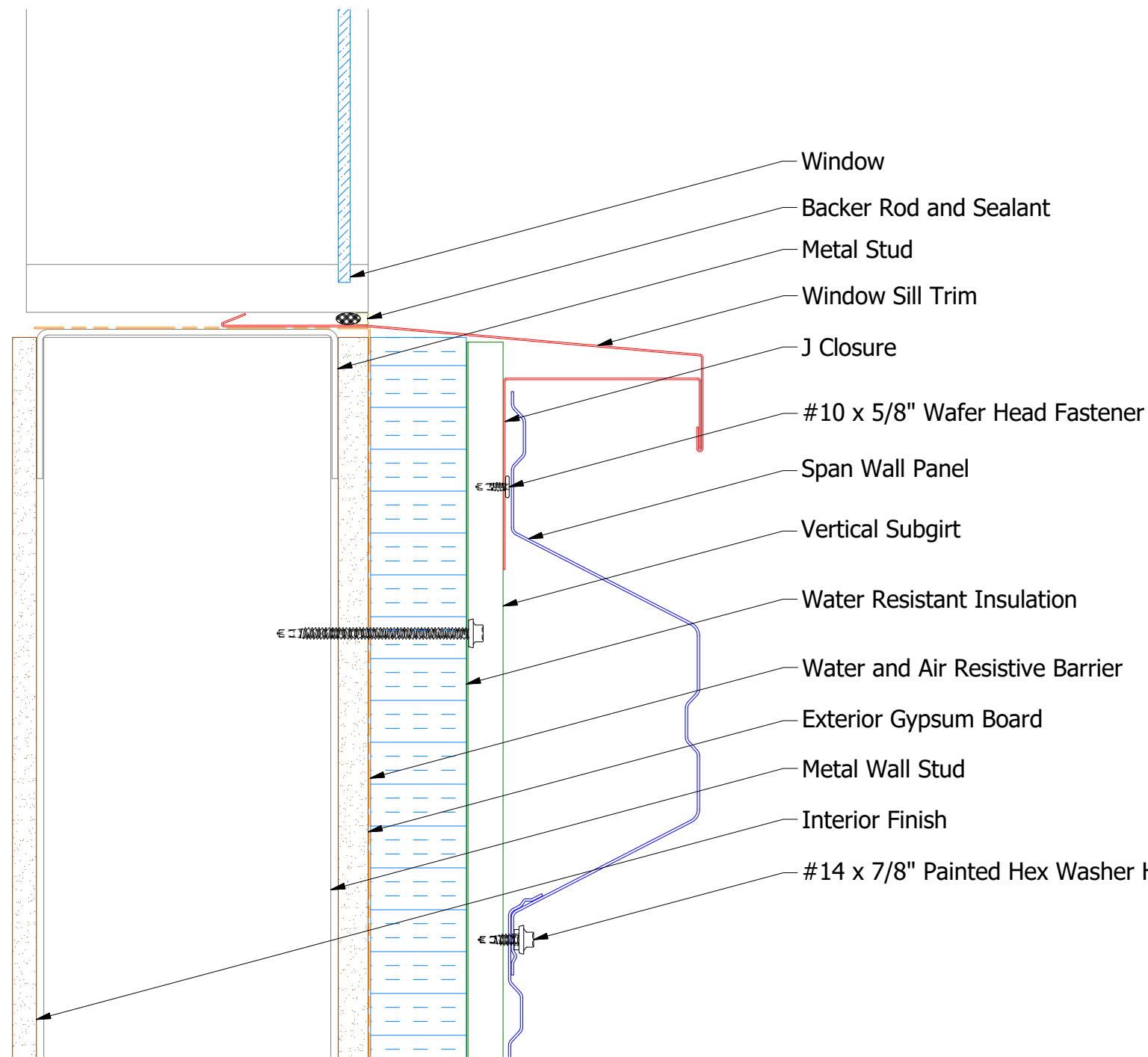
Note: \* denotes color side.

2 Stage Method of Weather Proofing

		ATAS INTERNATIONAL, INC Allentown PA 610-395-8445 Mesa AZ 480-558-7210	
TITLE Span Wall Jamb Detail			
DWG. NO.		DR KRK	DATE 3/9/2015
MATERIAL		APP	DATE
		SH. SIZE B	SCALE X:X

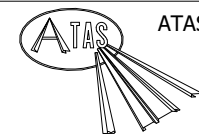


Horizontal Panel

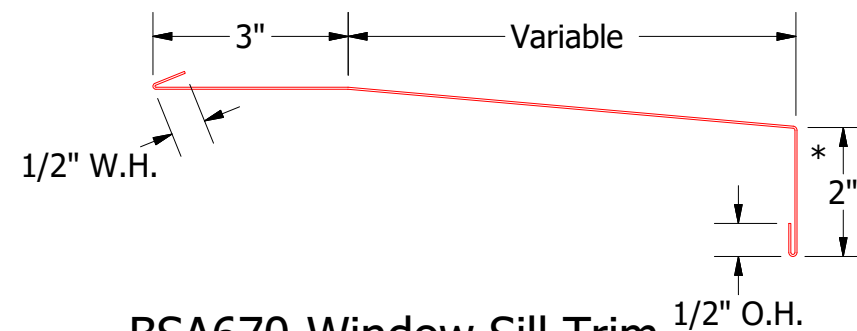


BSA270-J Closure

2 Stage Method of Weather Proofing



ATAS INTERNATIONAL, INC  
Allentown PA  
610-395-8445  
Mesa AZ  
480-558-7210



BSA670-Window Sill Trim

REV. NO.		DATE	DESCRIPTION OF REVISION	BY	APP	TITLE		Span Wall Window Sill Detail	
DWG. NO.		DR		DATE		3/9/2015			
MATERIAL		APP		DATE					
SH. SIZE		B		SCALE		X:X			