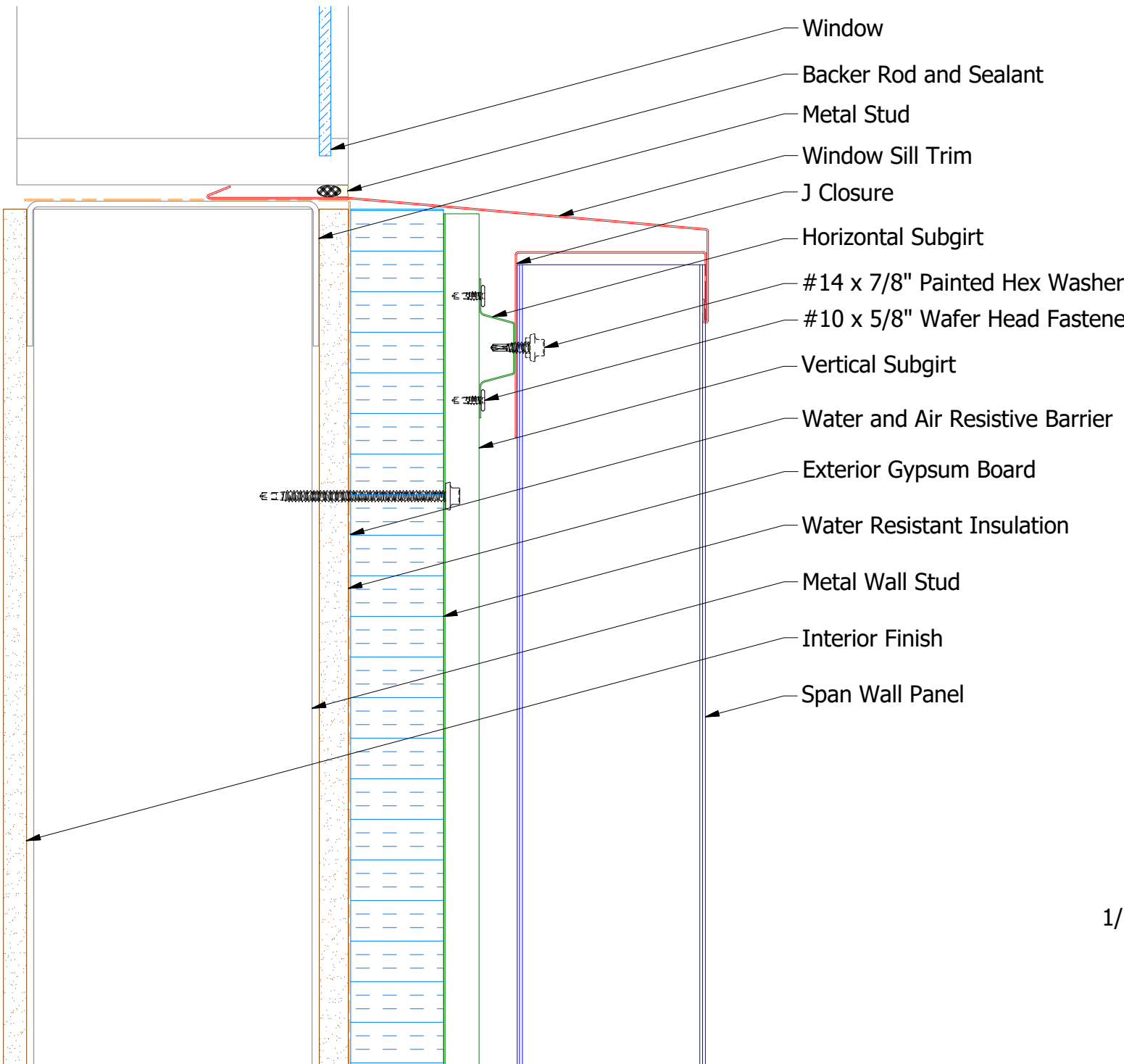
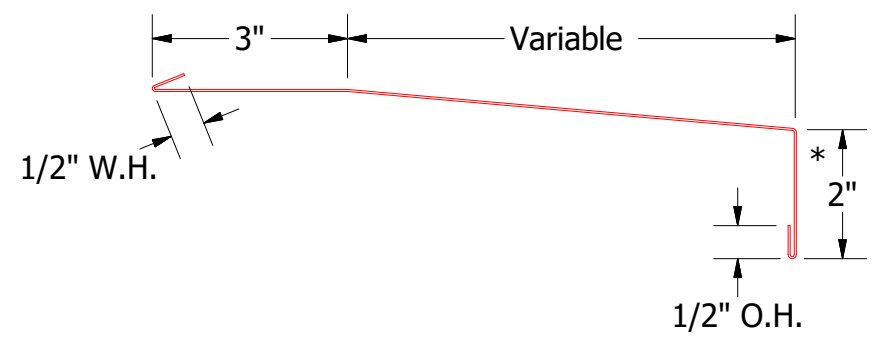
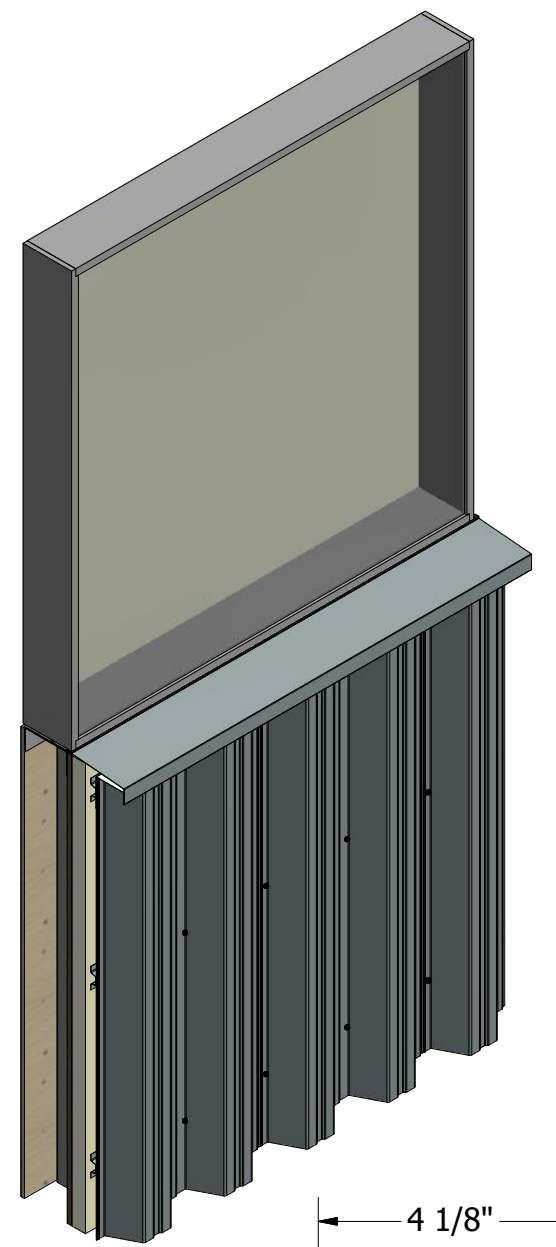


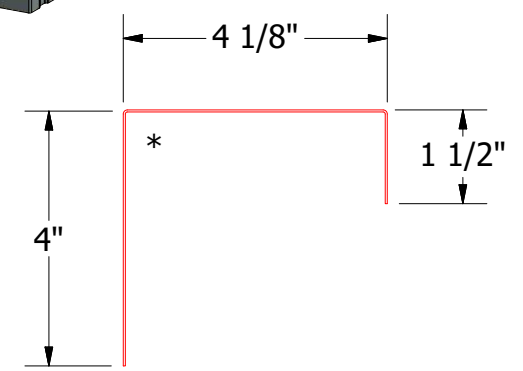
# Vertical Panel



- Window
- Backer Rod and Sealant
- Metal Stud
- Window Sill Trim
- J Closure
- Horizontal Subgirt
- #14 x 7/8" Painted Hex Washer Head Fastener with Washer
- #10 x 5/8" Wafer Head Fastener
- Vertical Subgirt
- Water and Air Resistive Barrier
- Exterior Gypsum Board
- Water Resistant Insulation
- Metal Wall Stud
- Interior Finish
- Span Wall Panel



BSA670-Window Sill Trim



BSA270-J Closure

2 Stage Method of Weather Proofing

**ATAS** ATAS INTERNATIONAL, INC  
 Allentown PA  
 610-395-8445  
 Mesa AZ  
 480-558-7210

TITLE **Span Wall Window Sill Detail**

REV. NO.	DATE	DESCRIPTION OF REVISION	BY	APP	DWG. NO.	DR	DATE
						KRK	3/9/2015
					MATERIAL	APP	DATE
						SH. SIZE	SCALE
						B	X:X