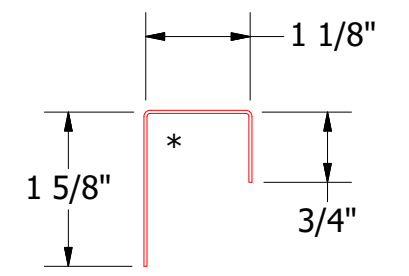
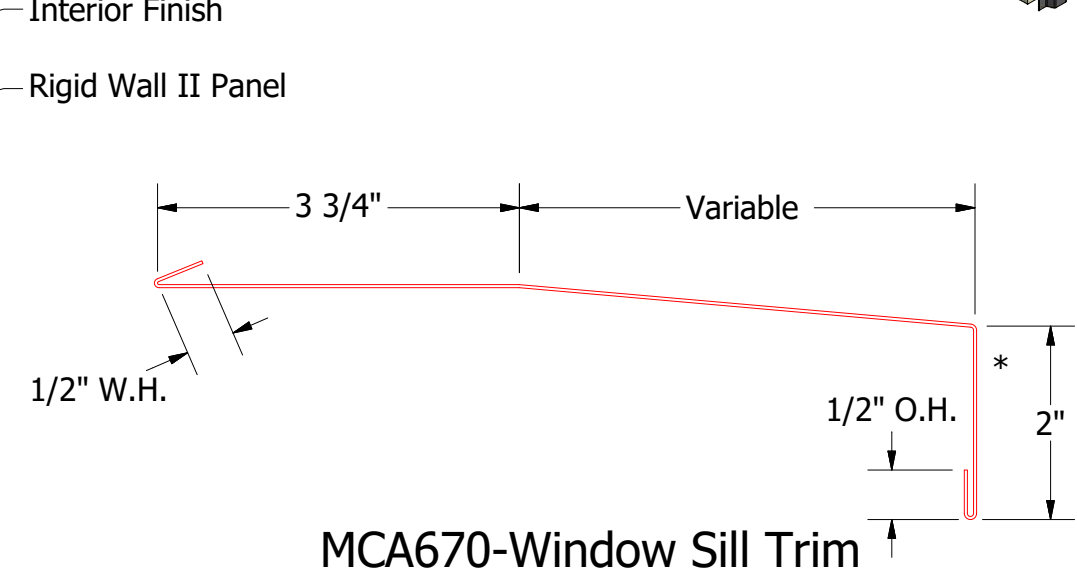
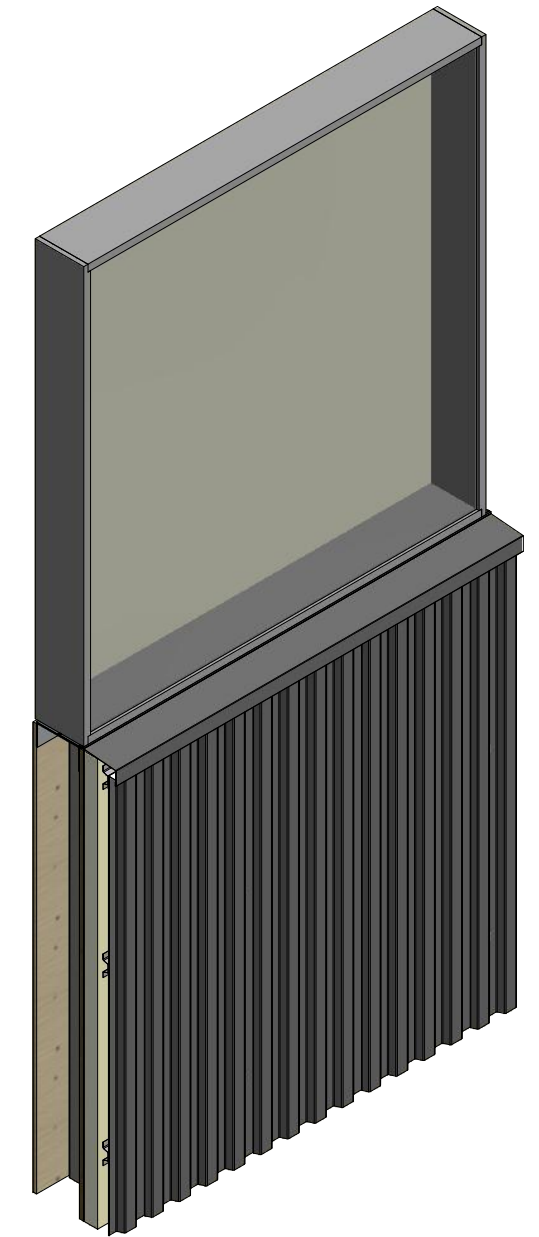
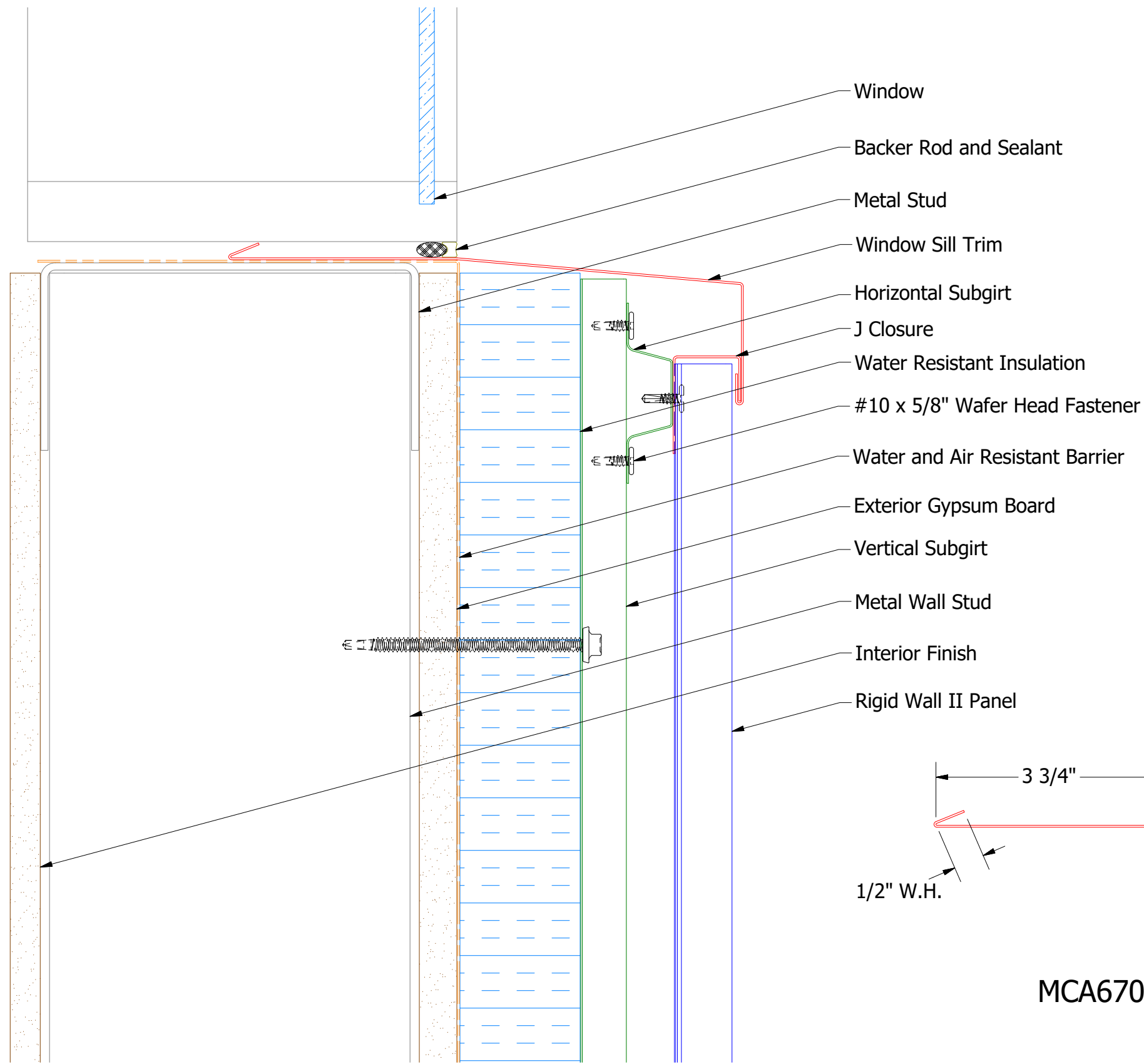


# Vertical Panel



**MCA270-J Closure**

**MCA670-Window Sill Trim**

2 Stage Method of Weather Proofing

**ATAS** ATAS INTERNATIONAL, INC  
 Allentown PA  
 610-395-8445  
 Mesa AZ  
 480-558-7210

REV. NO.		DATE		DESCRIPTION OF REVISION		BY	APP
DWG. NO.		DR		DATE		APP	
MATERIAL		SH. SIZE		SCALE		X:X	

TITLE **Rigid Wall II Window Sill Detail**

DATE **3/16/2015**  
 DATE  
 SCALE **B**