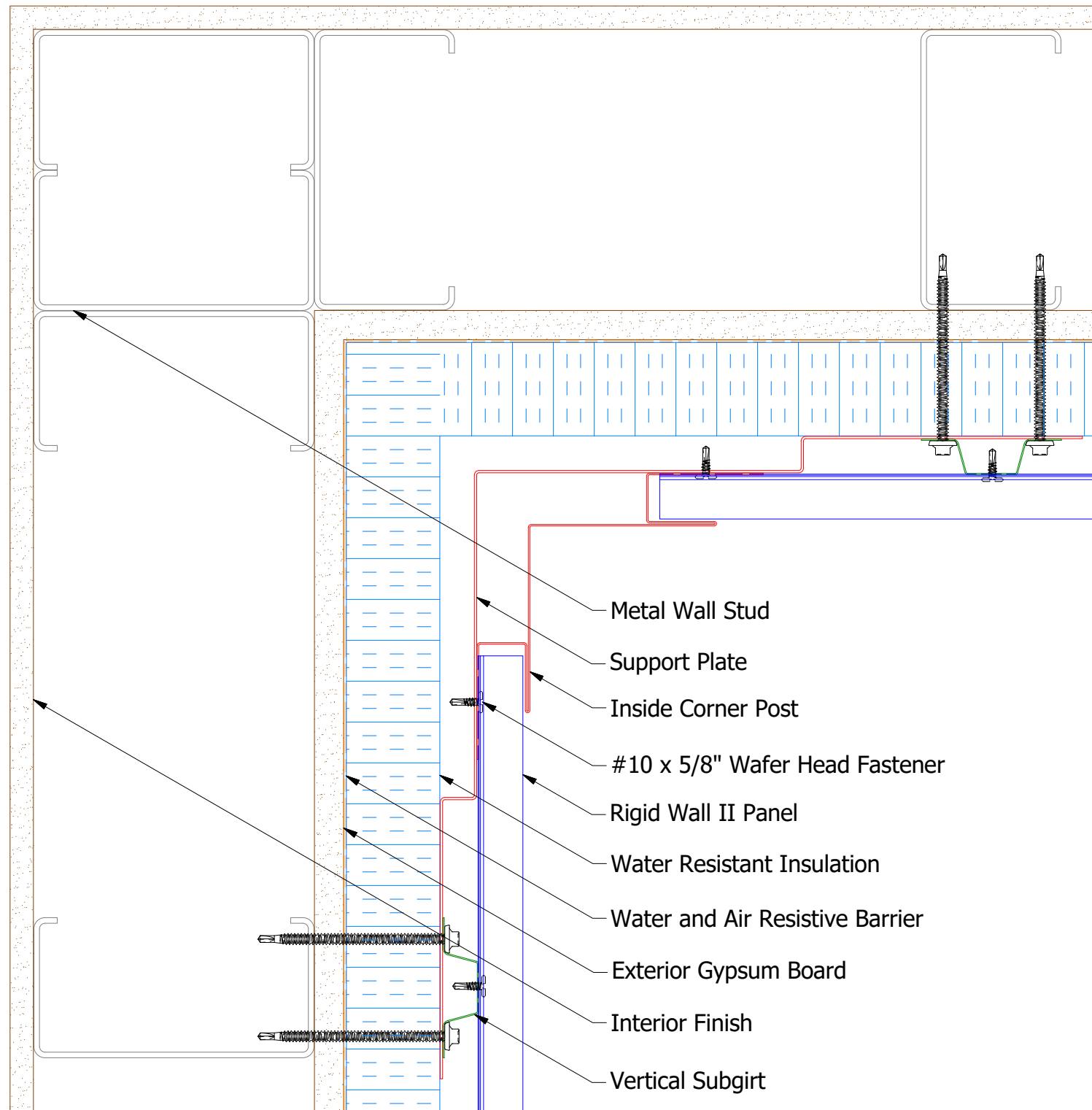
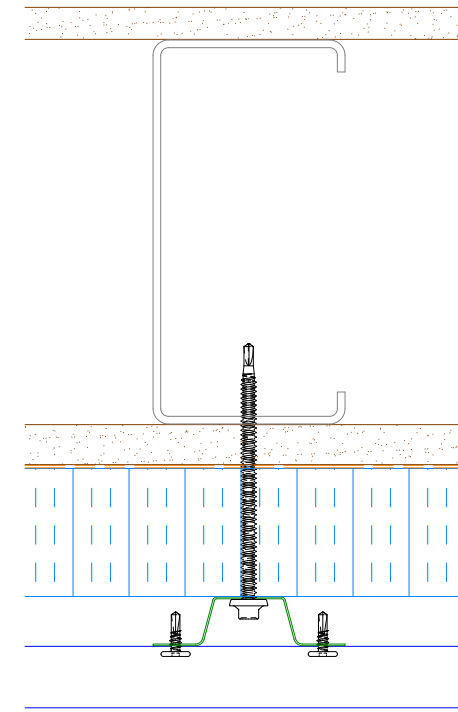


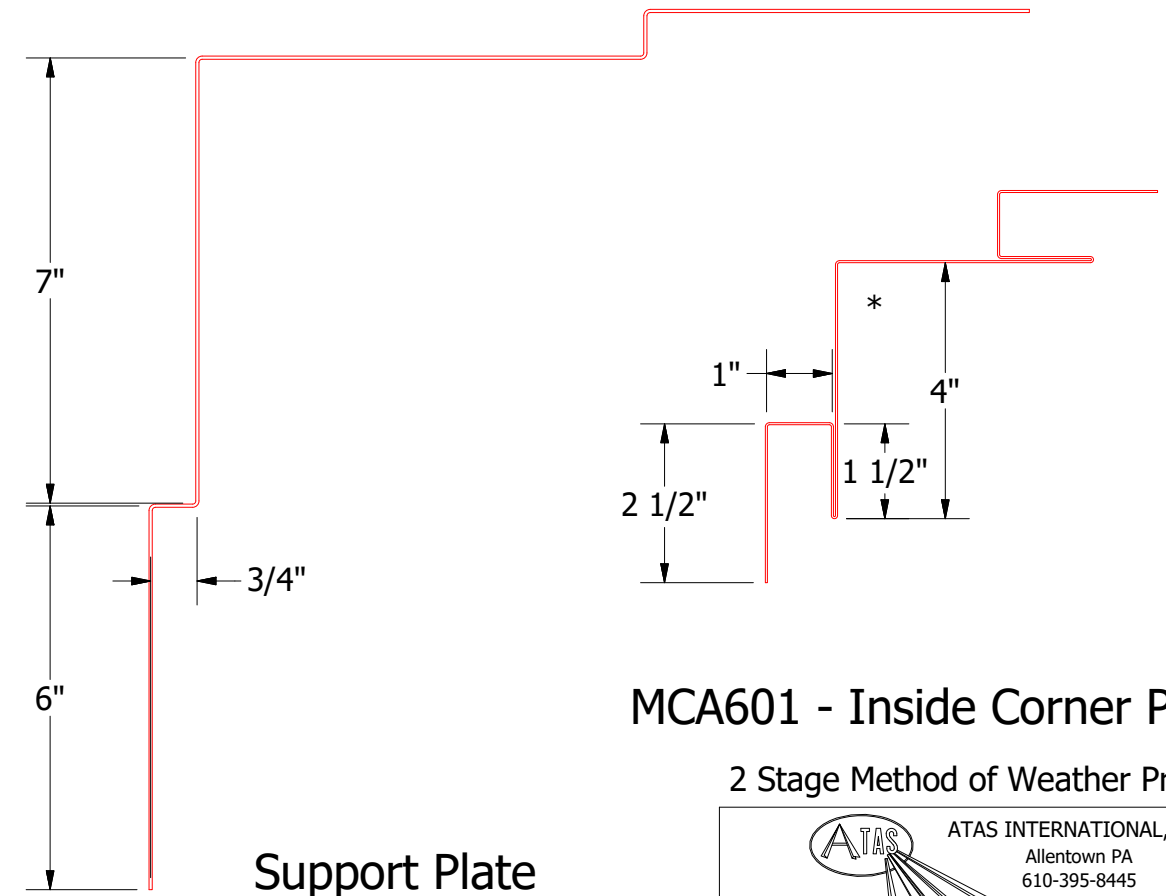
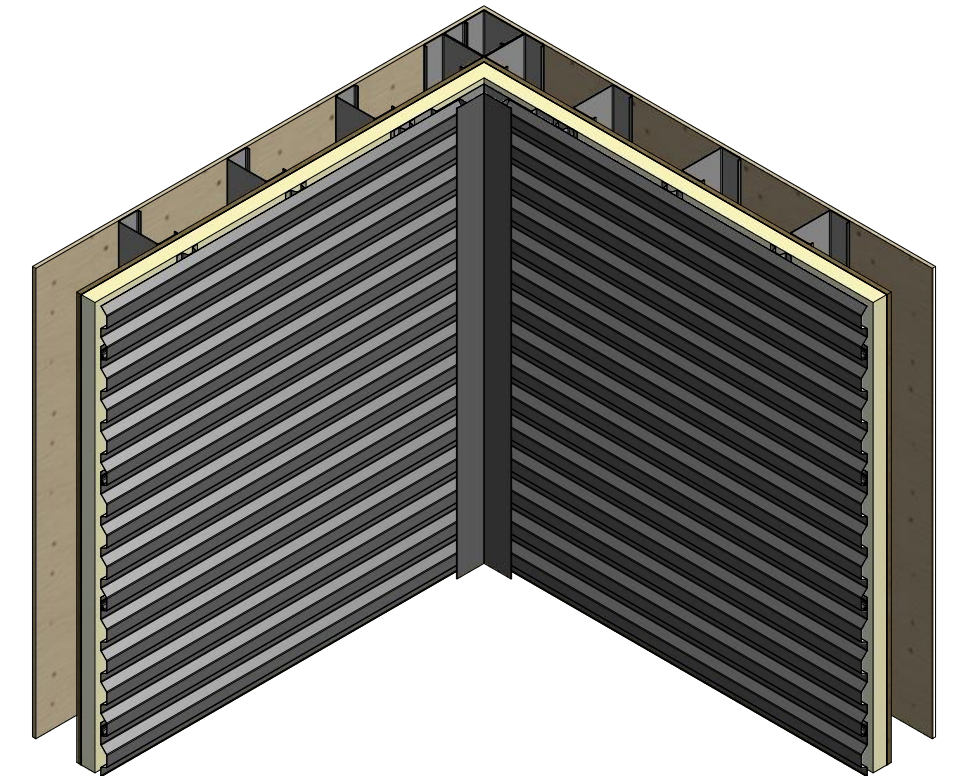
Horizontal Panel



- Metal Wall Stud
- Support Plate
- Inside Corner Post
- #10 x 5/8" Wafer Head Fastener
- Rigid Wall II Panel
- Water Resistant Insulation
- Water and Air Resistive Barrier
- Exterior Gypsum Board
- Interior Finish
- Vertical Subgirt




Alternate Subgirt Orientation



Support Plate

MCA601 - Inside Corner Post
2 Stage Method of Weather Proofing

| | | | |
|--|----------|------------------------------------|--------|
|  ATAS INTERNATIONAL, INC Allentown PA 610-395-8445 Mesa AZ 480-558-7210 | | TITLE | |
| | | Rigid Wall II Inside Corner Detail | |
| DWG. NO. | DR | DATE | |
| | KRK | 3/13/2015 | |
| MATERIAL | APP | DATE | |
| | | | |
| REV. NO. | DATE | DESCRIPTION OF REVISION | BY APP |
| | | | |
| | SH. SIZE | B | SCALE |
| | | | X:X |

NOTE: Optional 18 GA. Plate Outside Corner Post is Available