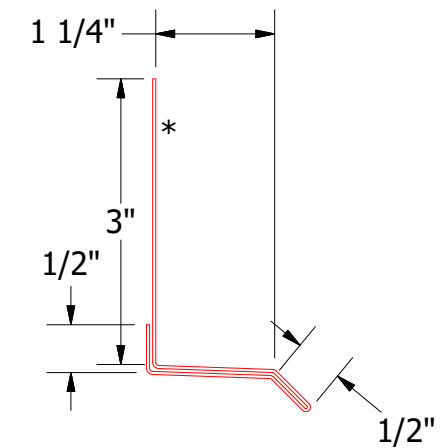
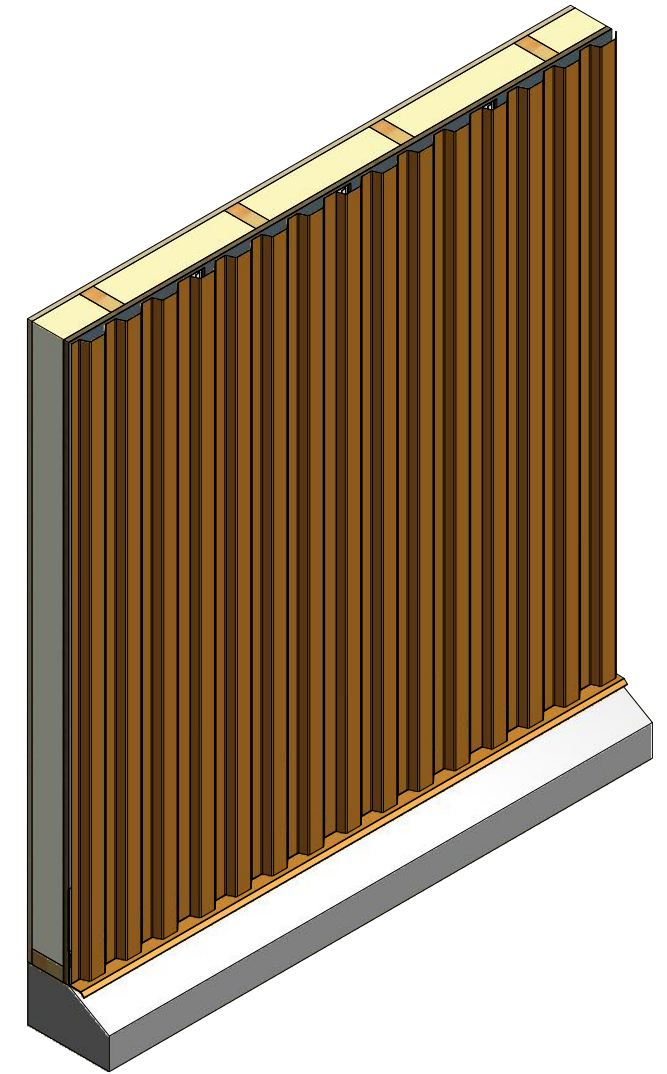
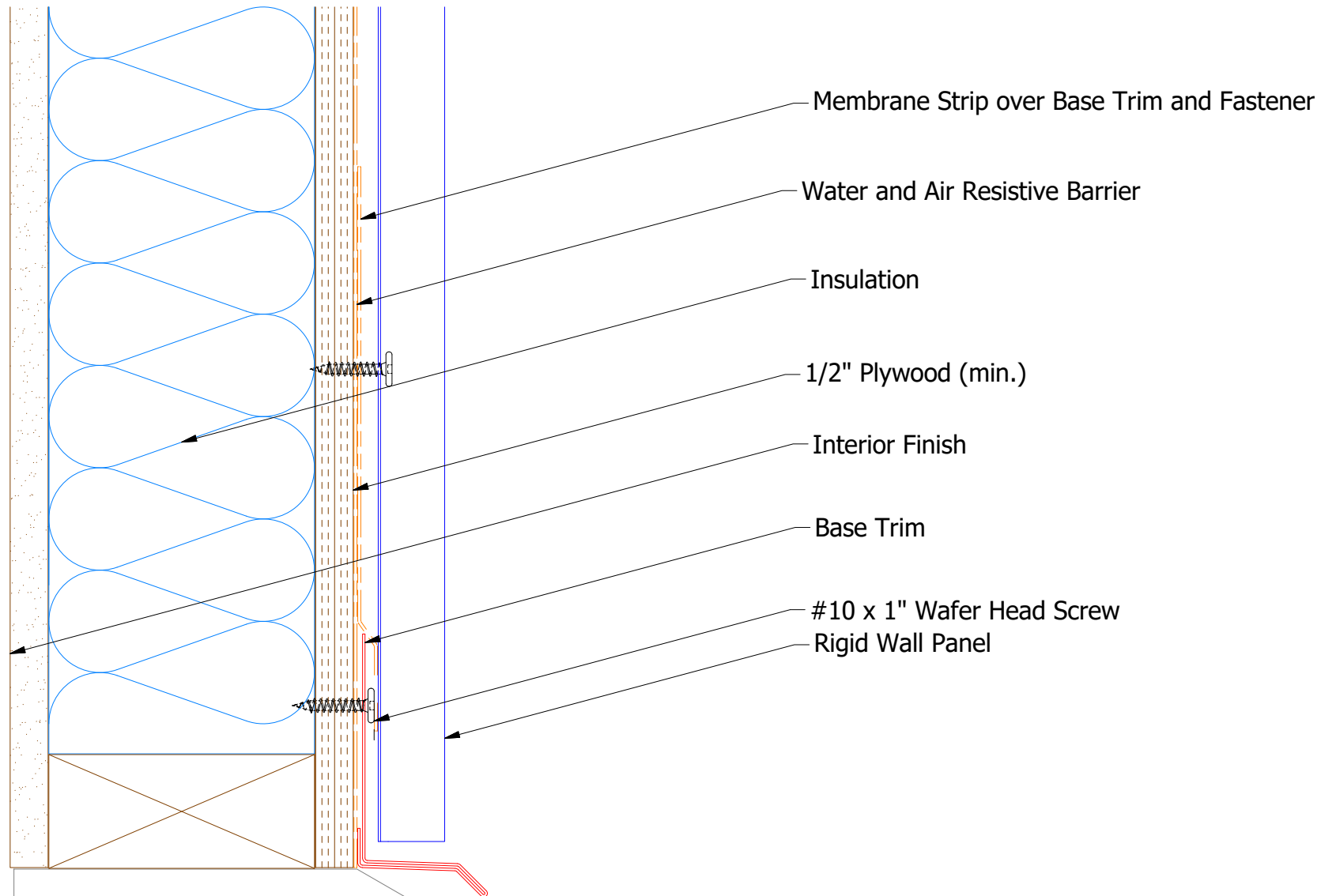


Vertical Panel



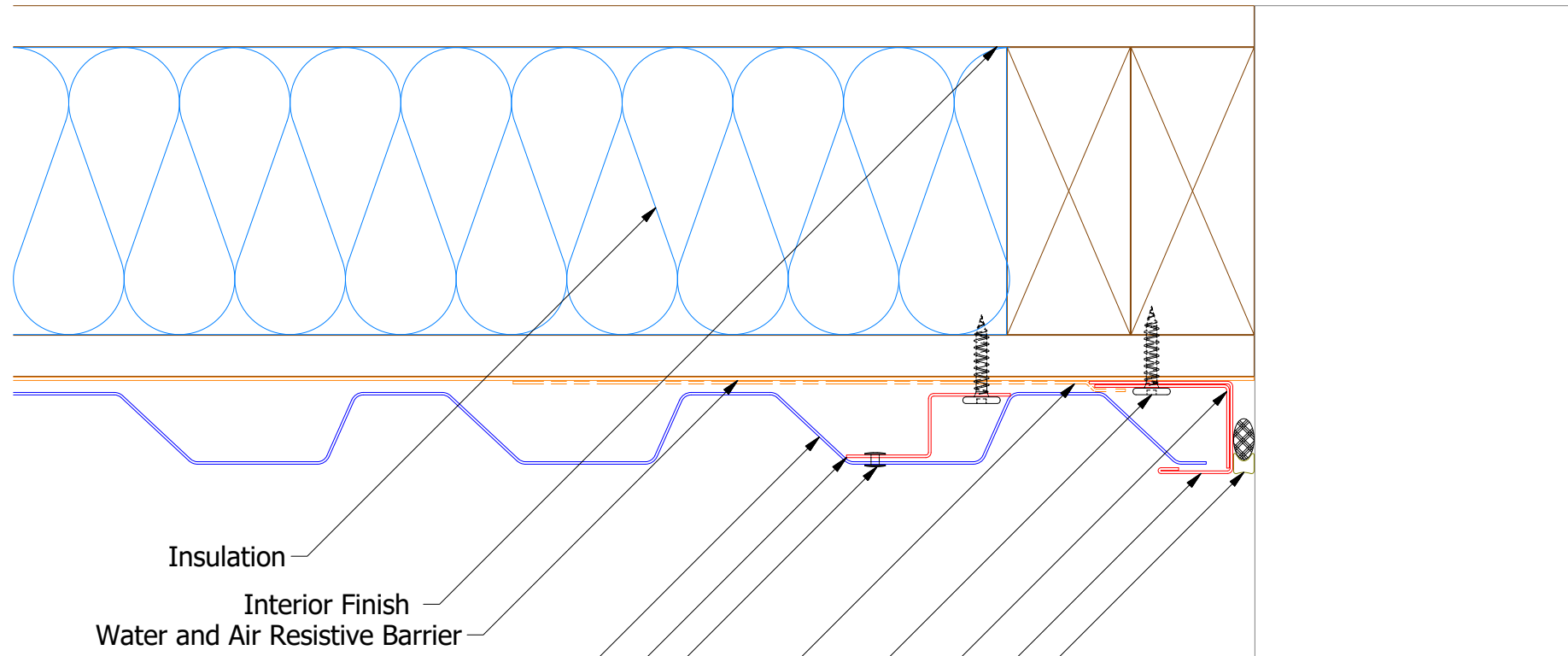
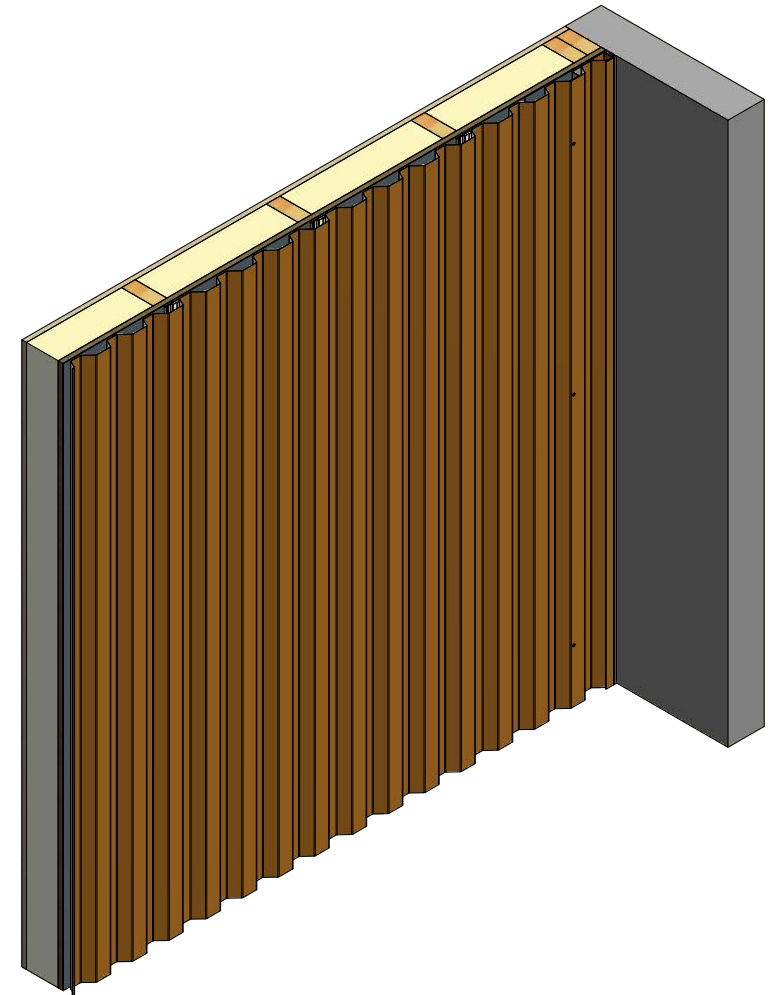
MCA661 - Base Trim

ATAS ATAS INTERNATIONAL, INC
 Allentown PA
 610-395-8445
 Mesa AZ
 480-558-7210

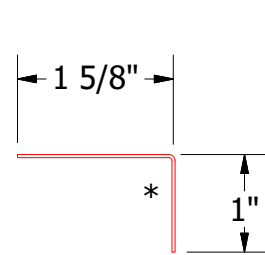
TITLE **Rigid Wall Base Detail**

REV. NO.	DATE	DESCRIPTION OF REVISION	BY	APP	DWG. NO.	DR	DATE
						DMR	7/1/2016
						DAS	7/25/16
					MATERIAL	SH. SIZE	SCALE
						B	X:X

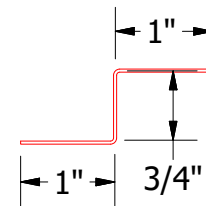
Vertical Panel



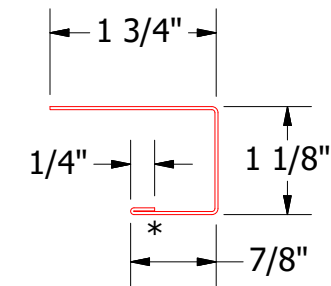
- Insulation
- Interior Finish
- Water and Air Resistive Barrier
- Rigid Wall Panel
- Support Z
- Painted Pop Rivet (24" O.C. Max.)
- Membrane Strip over J Channel and Angle Trim
- #10 x 1" Wafer Head Screw
- Angle Trim
- J Channel
- Backer Rod and Sealant



MCA680 - Angle Trim



MCA681 - Support Z

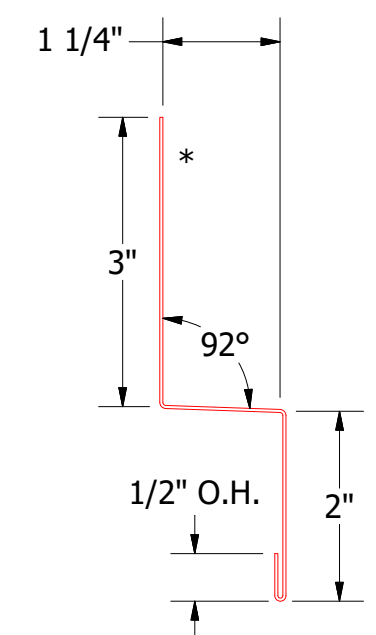
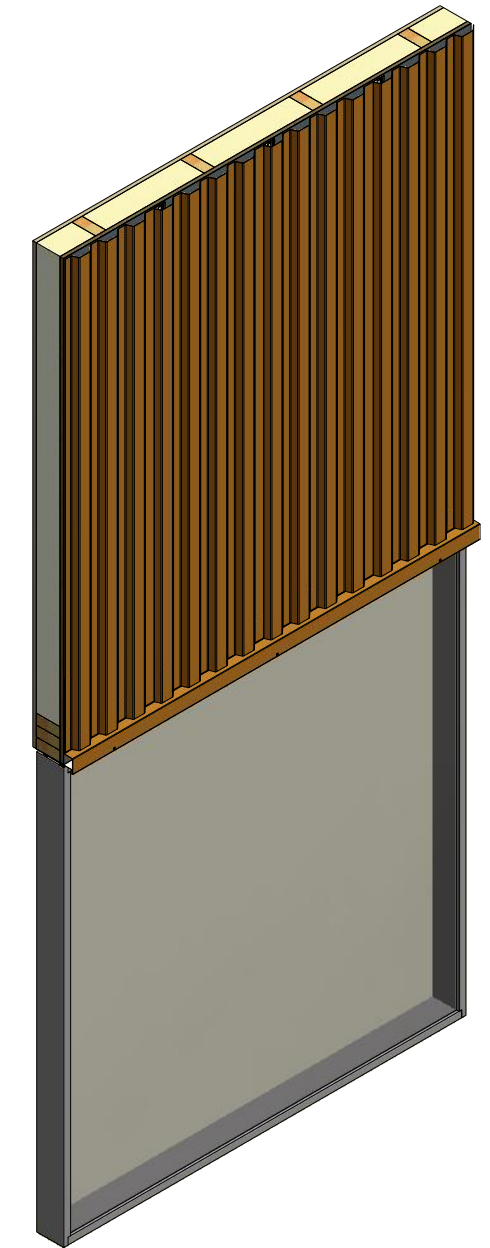
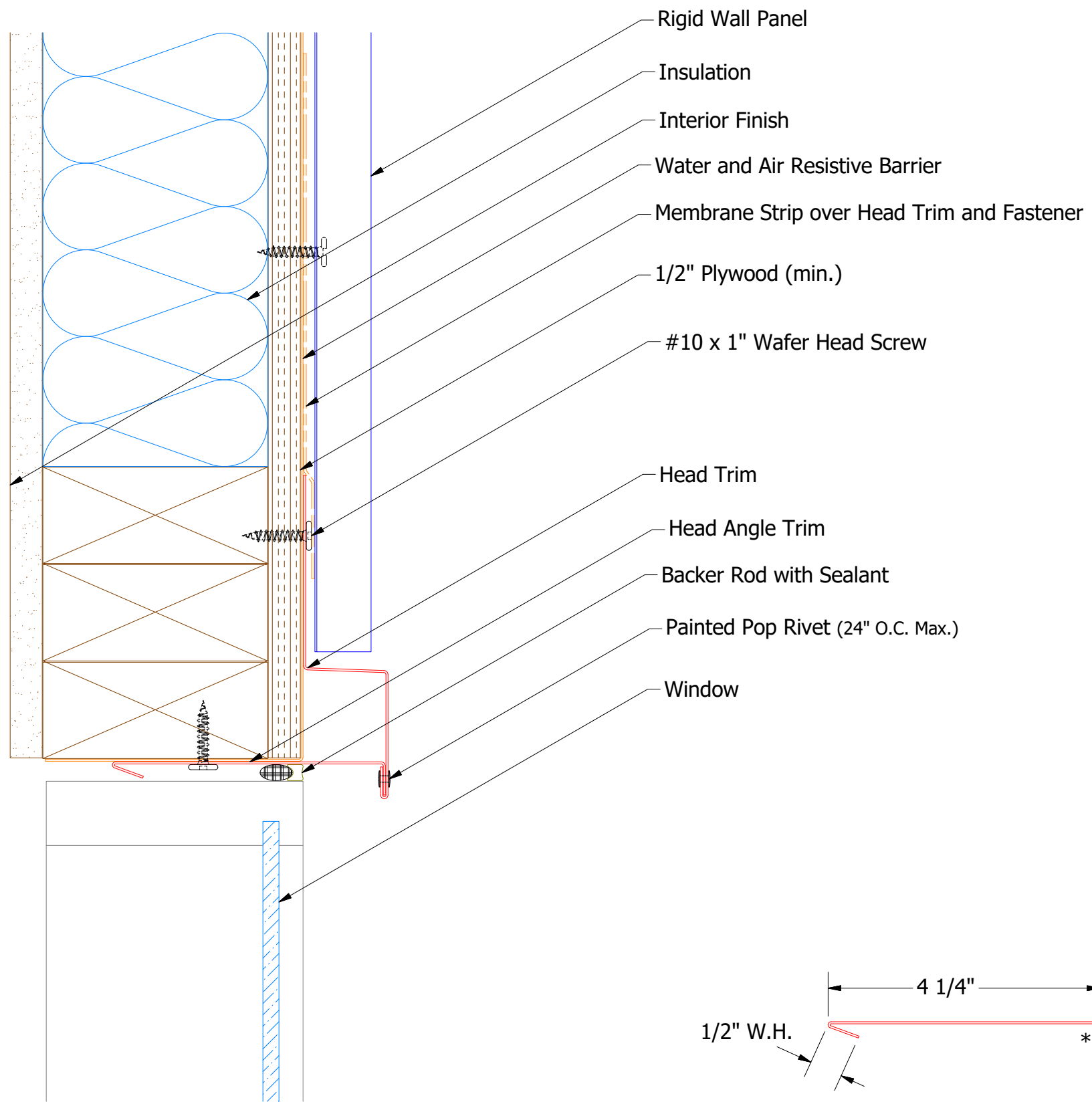


MCA118 - J Channel

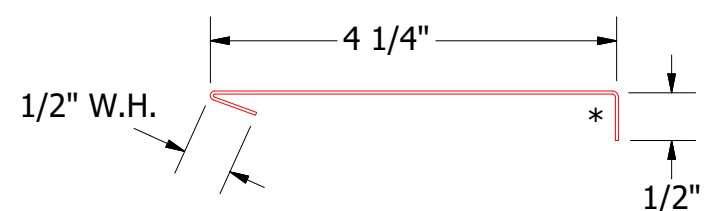
REV. NO.		DATE	DESCRIPTION OF REVISION	BY	APP
TITLE					
Rigid Wall Endwall Detail					
DWG. NO.		DR	DMR	DATE	7/1/2016
MATERIAL		APP	DAS	DATE	7/25/16
SH. SIZE		B	SCALE	X:X	


ATAS INTERNATIONAL, INC
 Allentown PA
 610-395-8445
 Mesa AZ
 480-558-7210

Vertical Panel



MCA550 - Head Trim

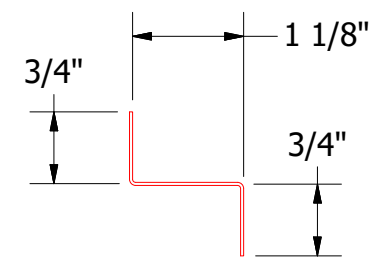
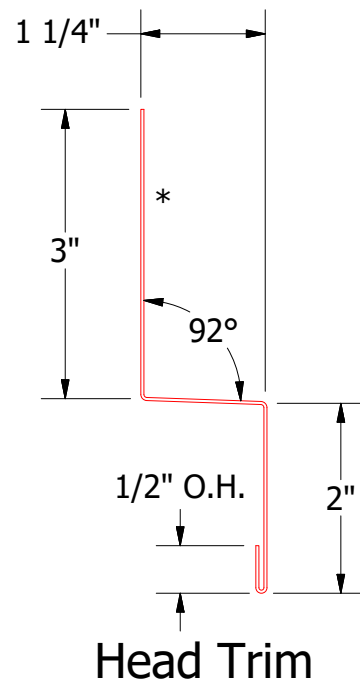
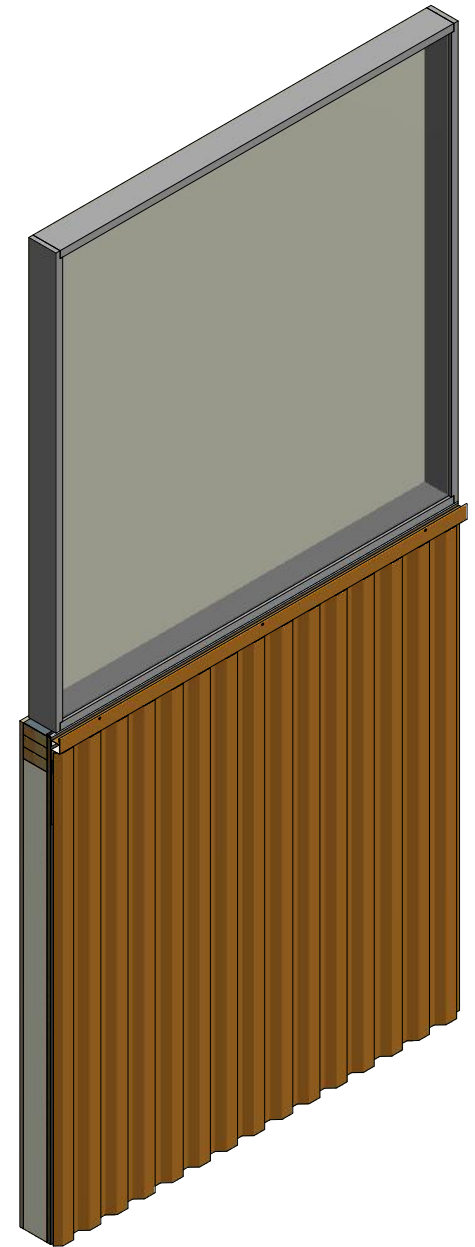
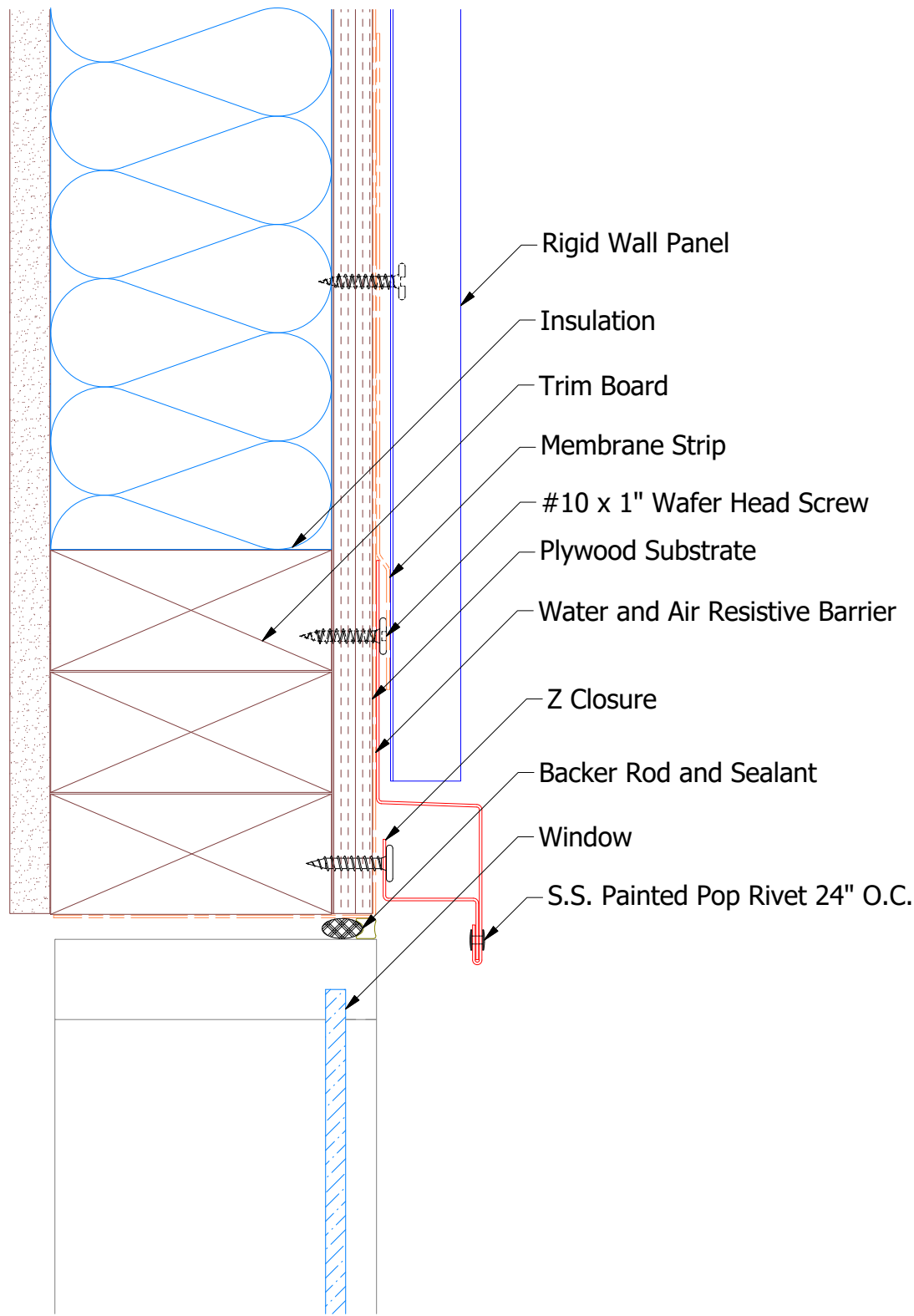


MCA690 - Head Angle Trim



ATAS INTERNATIONAL, INC
 Allentown PA
 610-395-8445
 Mesa AZ
 480-558-7210

TITLE		Rigid Wall Head Detail	
DWG. NO.	DR	DMR	DATE 7/1/2016
MATERIAL	APP	DAS	DATE 7/25/16
REV. NO.	DATE	DESCRIPTION OF REVISION	BY APP
			SH. SIZE B SCALE X:X

Vertical Panel



Note: * denotes color side.

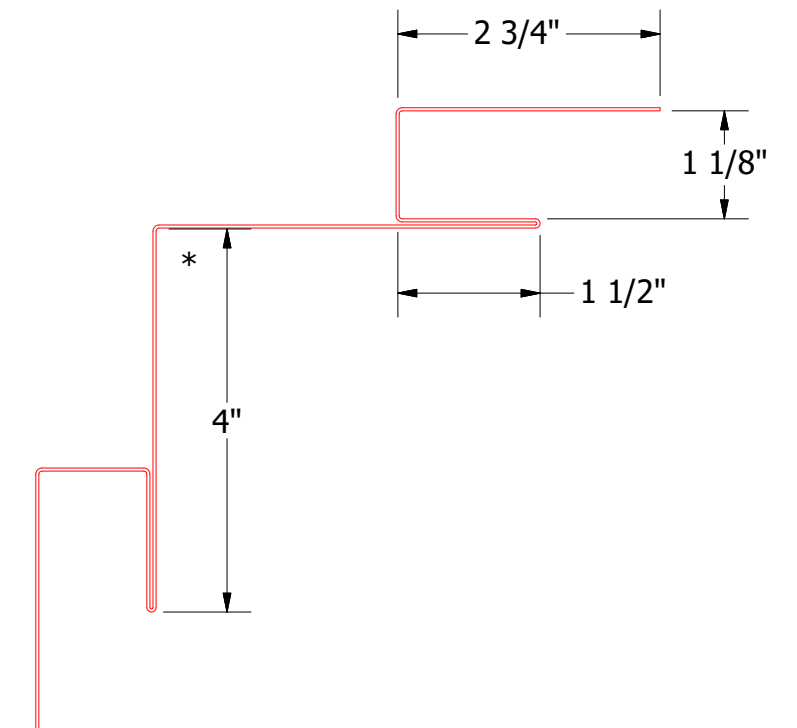
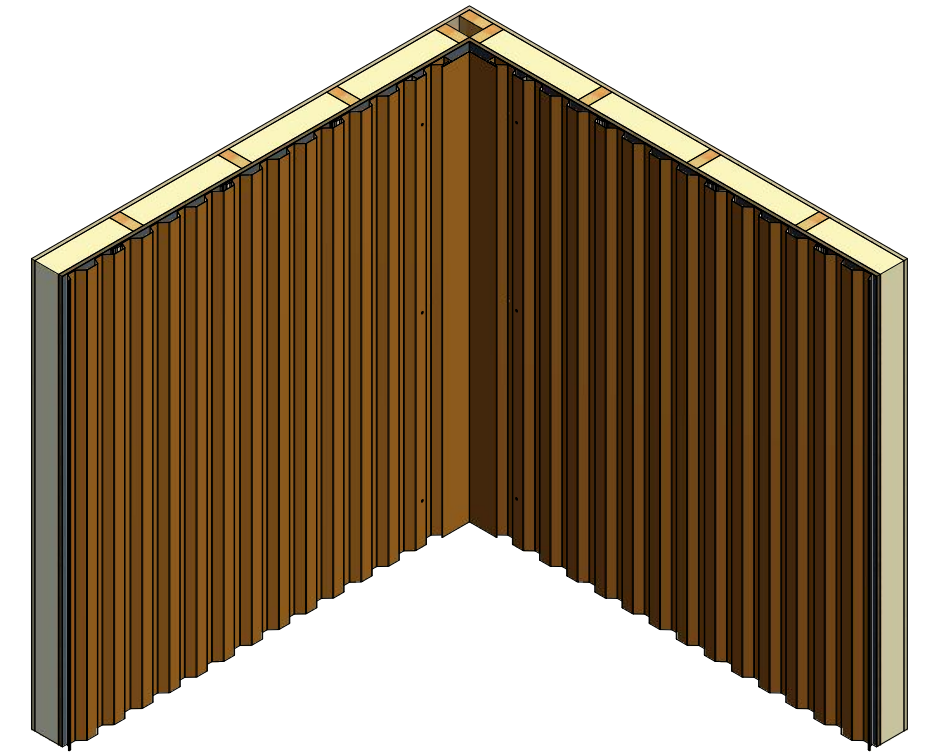
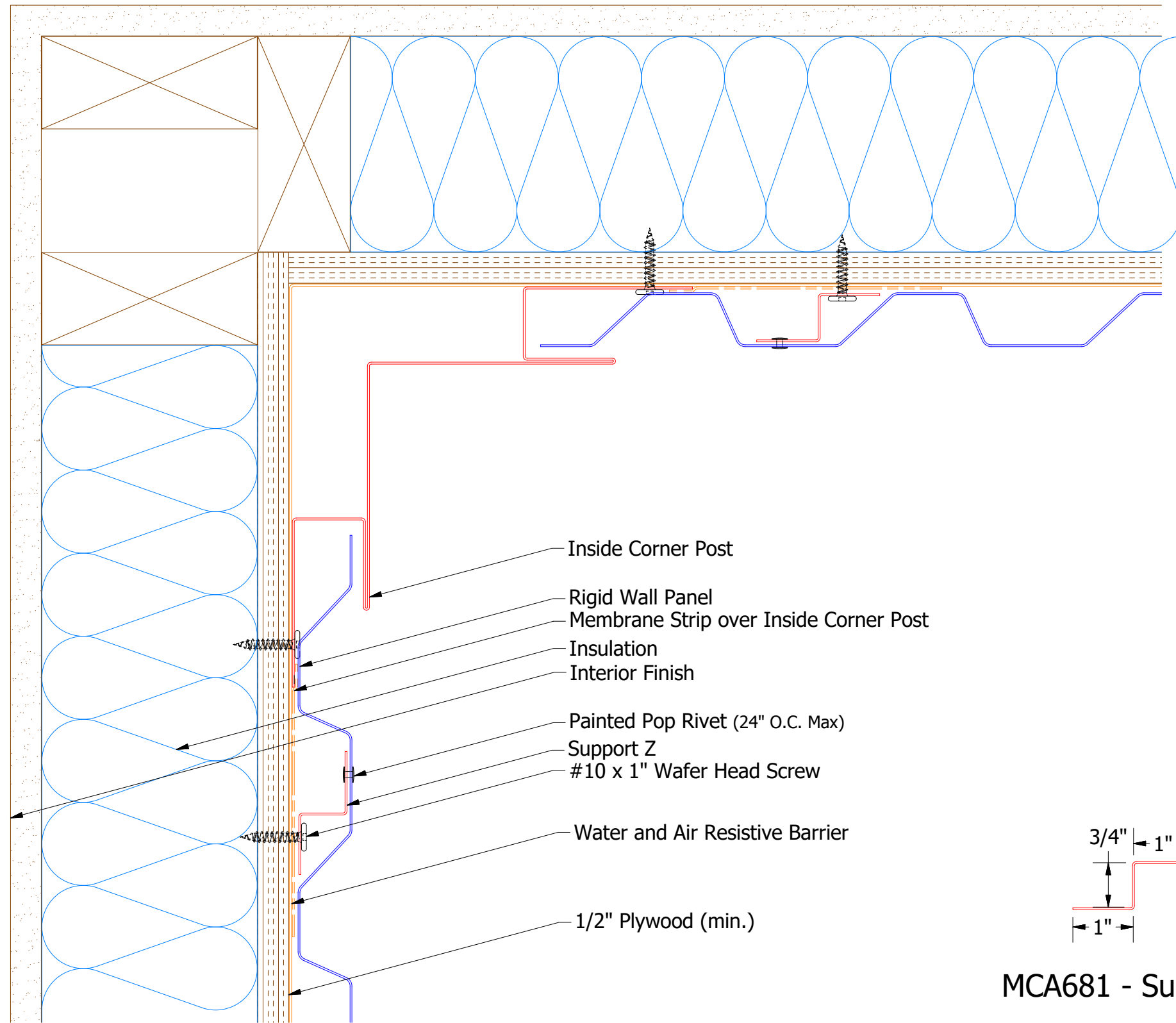

ATAS INTERNATIONAL, INC
 Allentown PA
 610-395-8445
 Mesa AZ
 480-558-7210

TITLE
 Rigid Wall Existing Head Window Detail

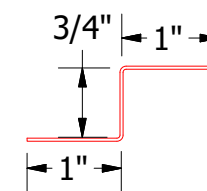
DWG. NO.	DR	DATE
	DMR	1/2/2019
MATERIAL	APP	DATE
	SH. SIZE	B
	SCALE	X:X

REV. NO.	DATE	DESCRIPTION OF REVISION	BY	APP

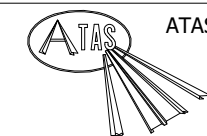
Vertical Panel



MCA601 - Inside Corner Post



MCA681 - Support Z

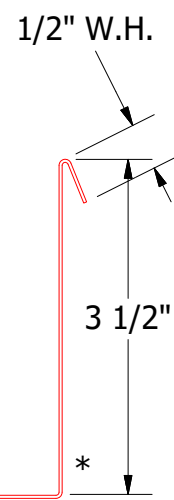
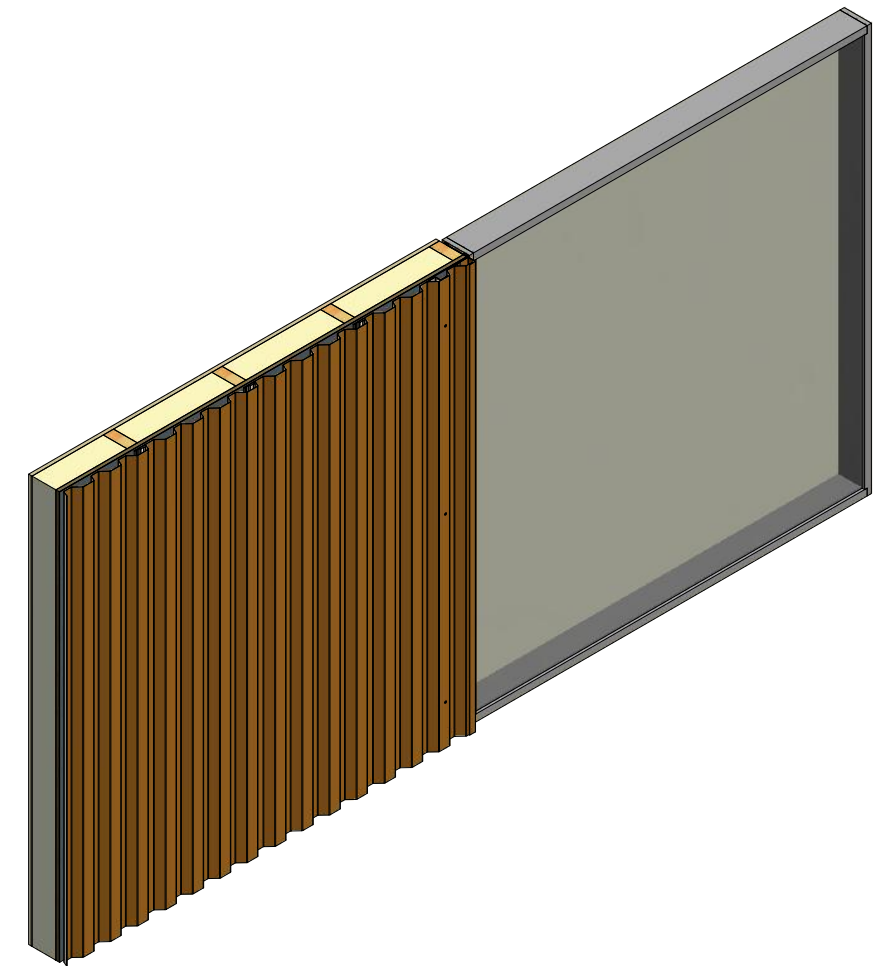
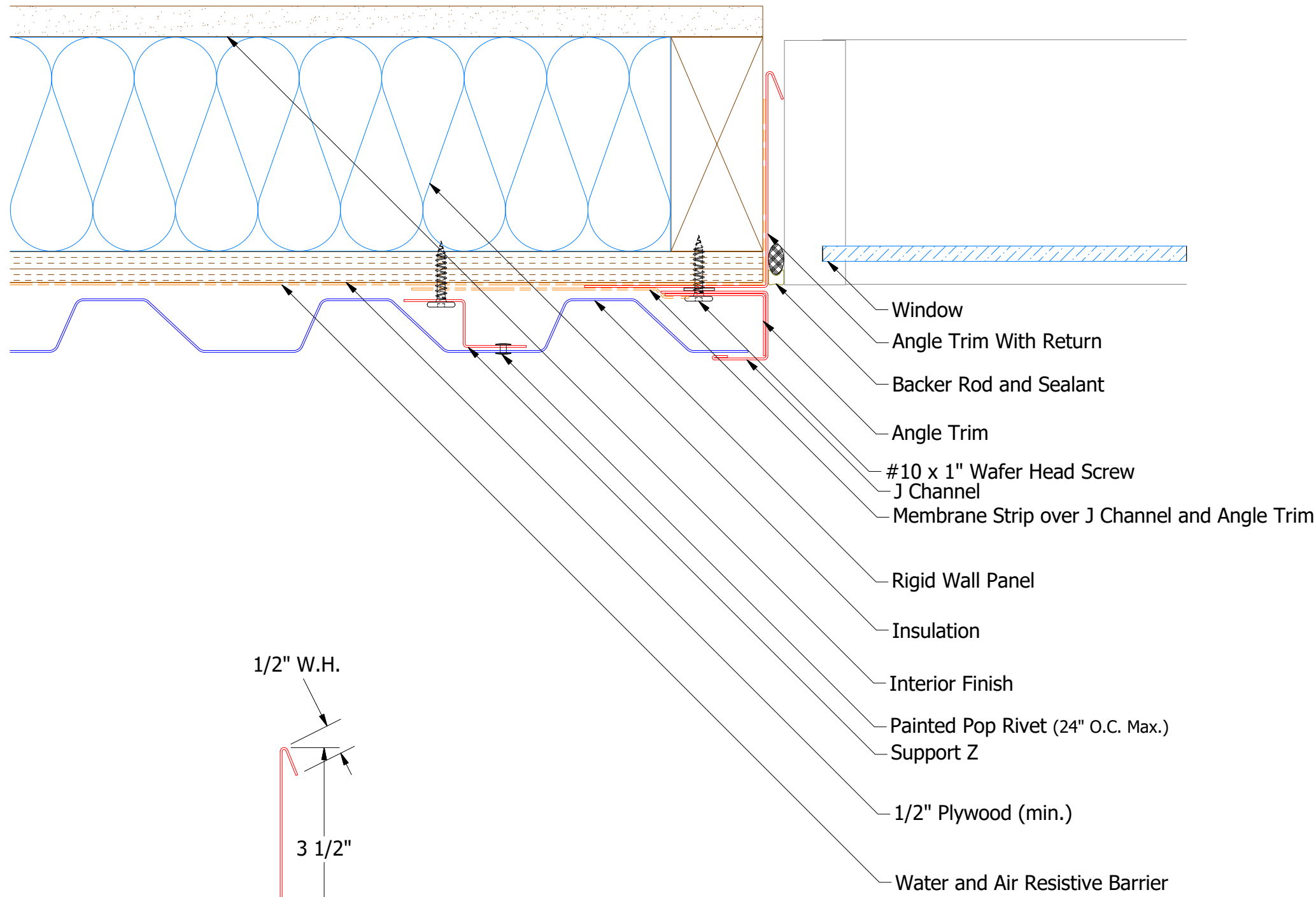


ATAS INTERNATIONAL, INC
 Allentown PA
 610-395-8445
 Mesa AZ
 480-558-7210

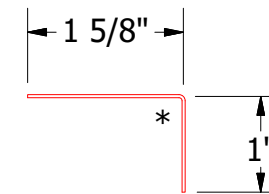
TITLE		Rigid Wall Inside Corner Detail	
DWG. NO.	DR	DATE	7/1/2016
	MBP		
MATERIAL	APP	DATE	7/25/16
	DAS		
REV. NO.	SH. SIZE	SCALE	X:X
	B		

REV. NO.	DATE	DESCRIPTION OF REVISION	BY	APP

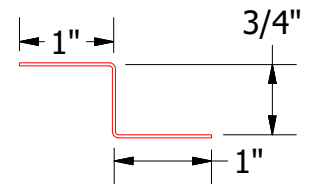
Vertical Panel



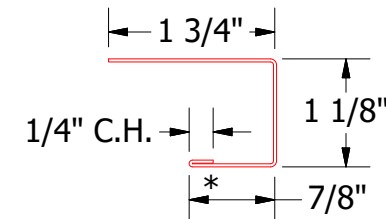
MCA683 - Angle Trim With Return



MCA680 - Angle Trim



MCA681 - Support Z

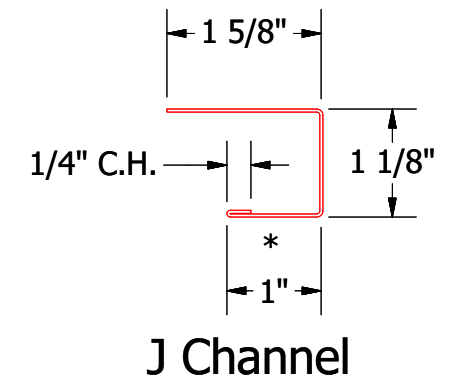
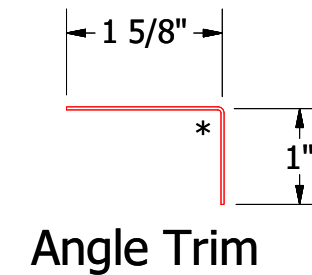
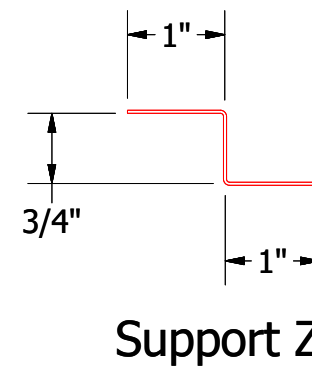
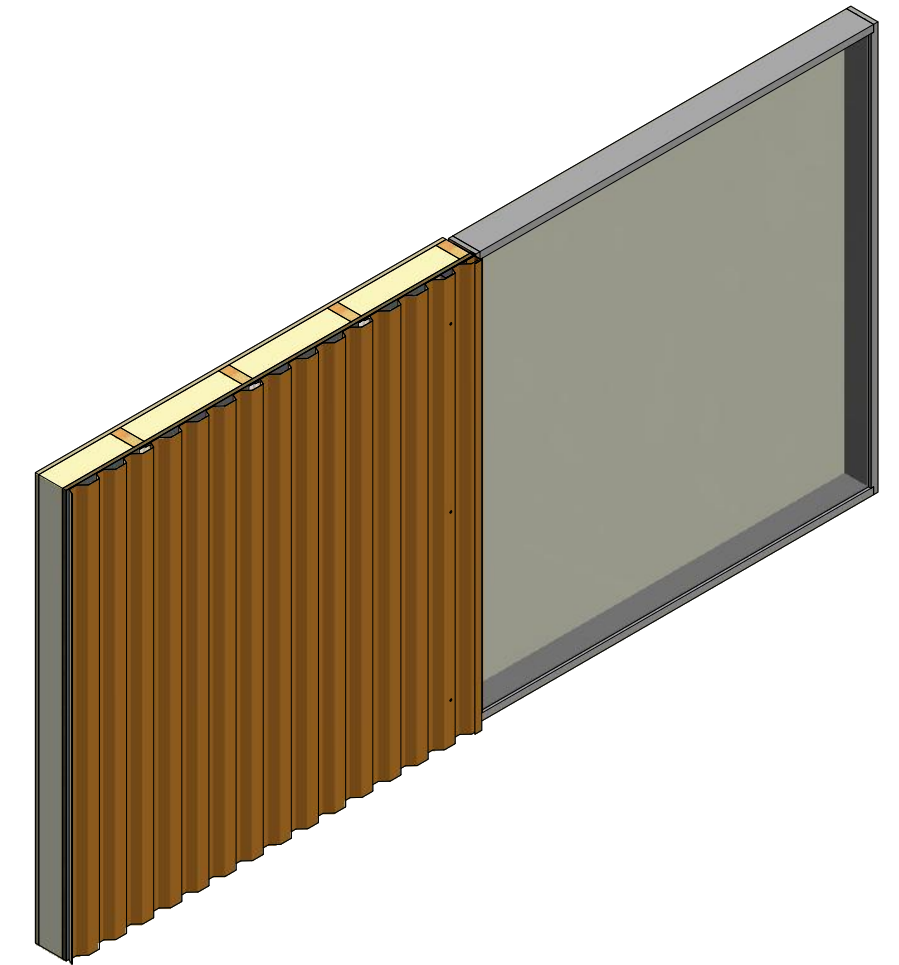
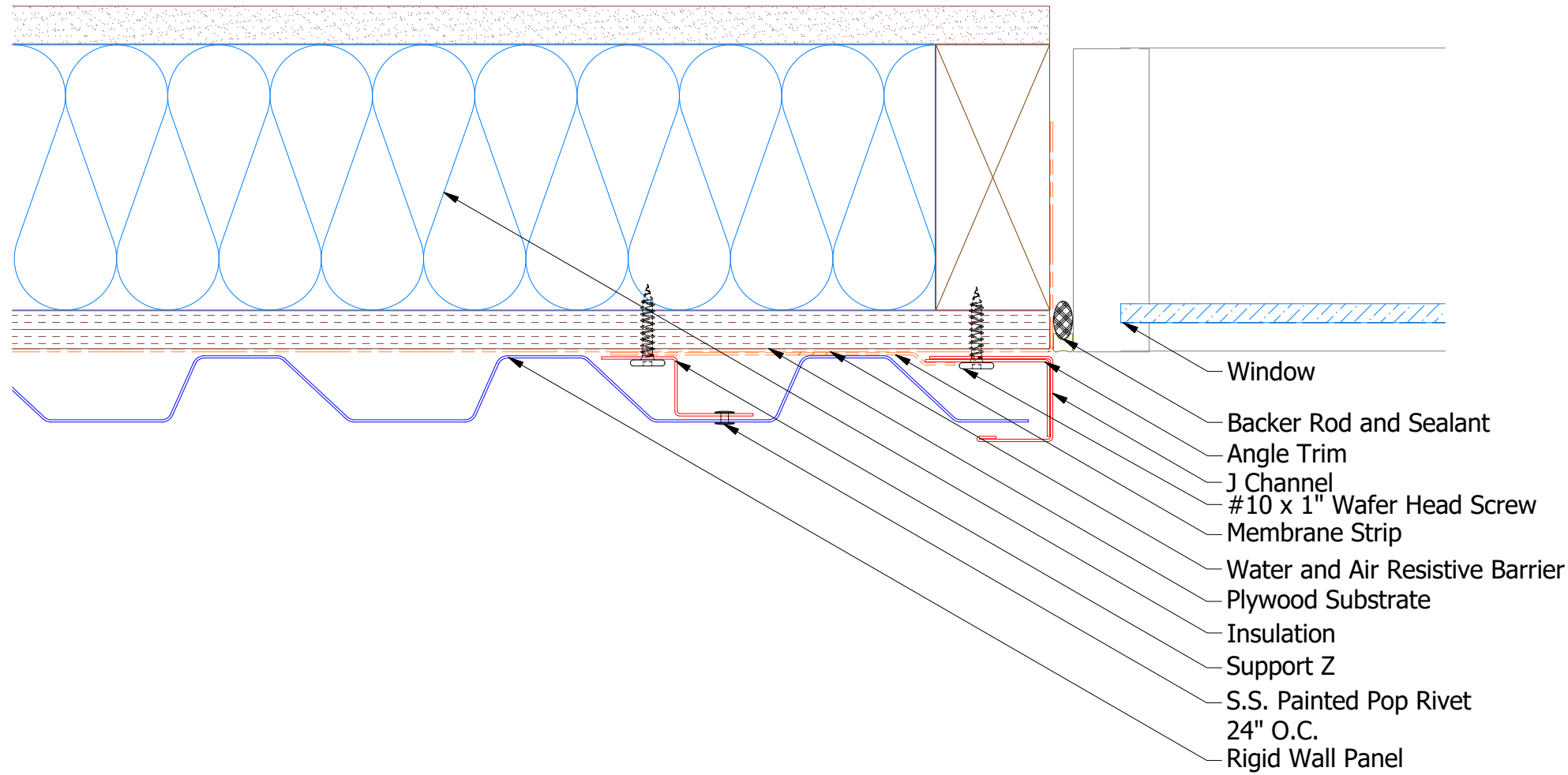


MCA118 - J Channel

ATAS ATAS INTERNATIONAL, INC
 Allentown PA
 610-395-8445
 Mesa AZ
 480-558-7210

TITLE				Rigid Wall Jamb Detail			
DWG. NO.		DR MBP		DATE 7/5/2016			
		APP DAS		DATE 7/25/16			
MATERIAL		SH. SIZE B		SCALE X:X			
REV. NO.	DATE	DESCRIPTION OF REVISION	BY	APP			

Vertical Panel

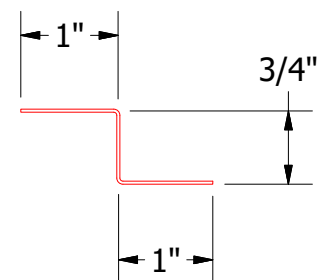
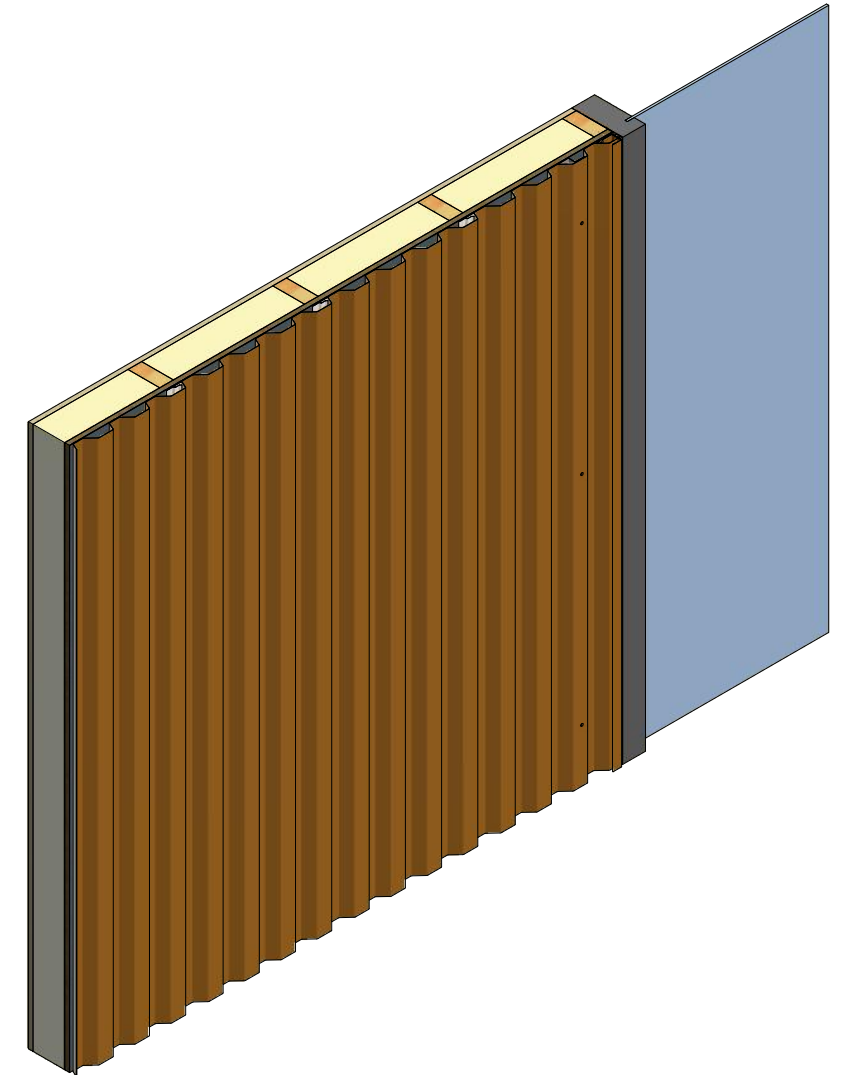
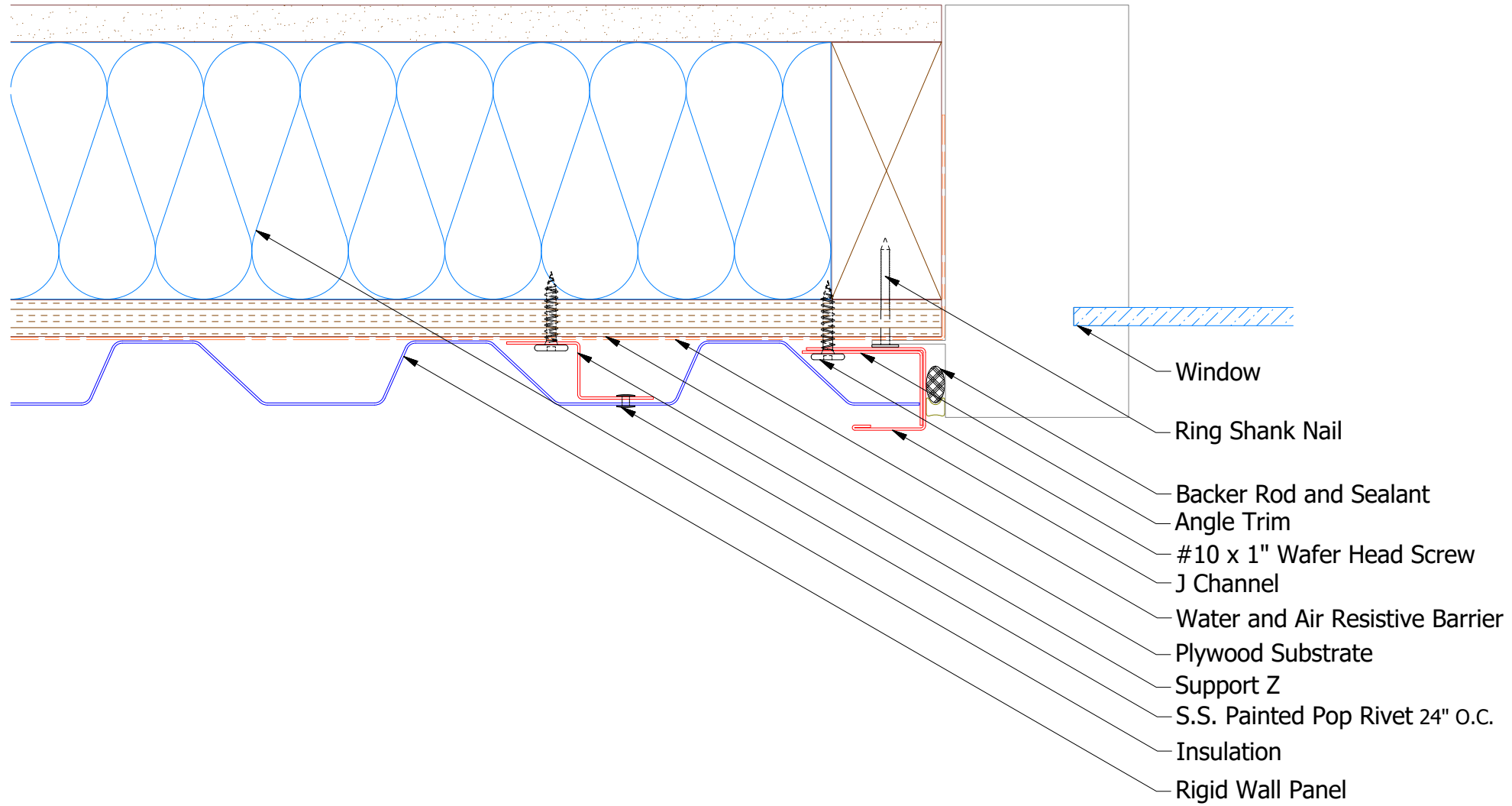


Note: * denotes color side.

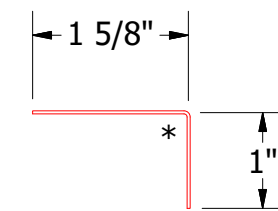
REV. NO.	DATE	DESCRIPTION OF REVISION	BY	APP	TITLE	DR	DATE
					Rigid Wall Jamb Existing Wall Detail	DR	1/8/2019
						APP	
					MATERIAL	SH. SIZE	SCALE
						B	X:X

ATAS ATAS INTERNATIONAL, INC
 Allentown PA
 610-395-8445
 Mesa AZ
 480-558-7210

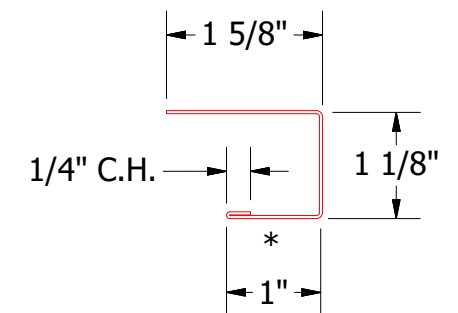
Vertical Panel



MCA681 - Support Z




MCA680 - Angle Trim

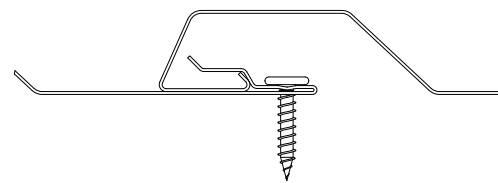
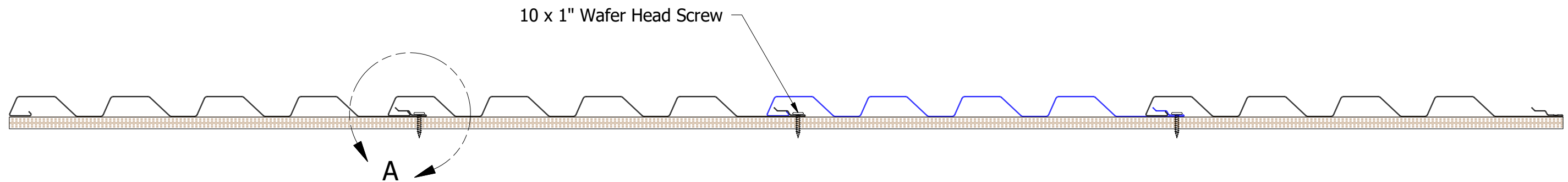
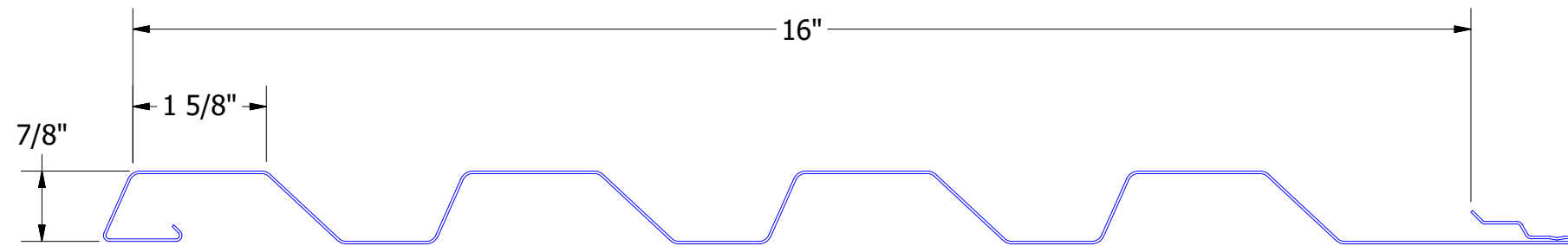
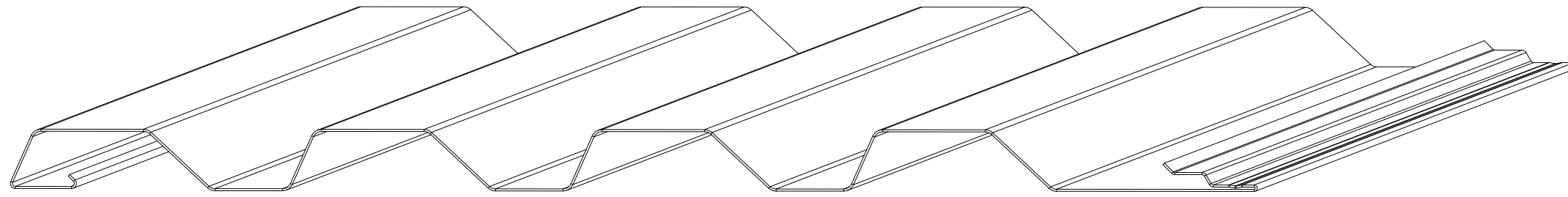


MCA118 - J Channel

Note: * denotes color side.


ATAS INTERNATIONAL, INC
 Allentown PA
 610-395-8445
 Mesa AZ
 480-558-7210

TITLE		Rigid Wall Jamb Window Flange Detail	
DWG. NO.	DR	DMR	DATE 1/8/2019
MATERIAL	APP		DATE
REV. NO.	DATE	DESCRIPTION OF REVISION	BY APP
			SH. SIZE B SCALE X:X



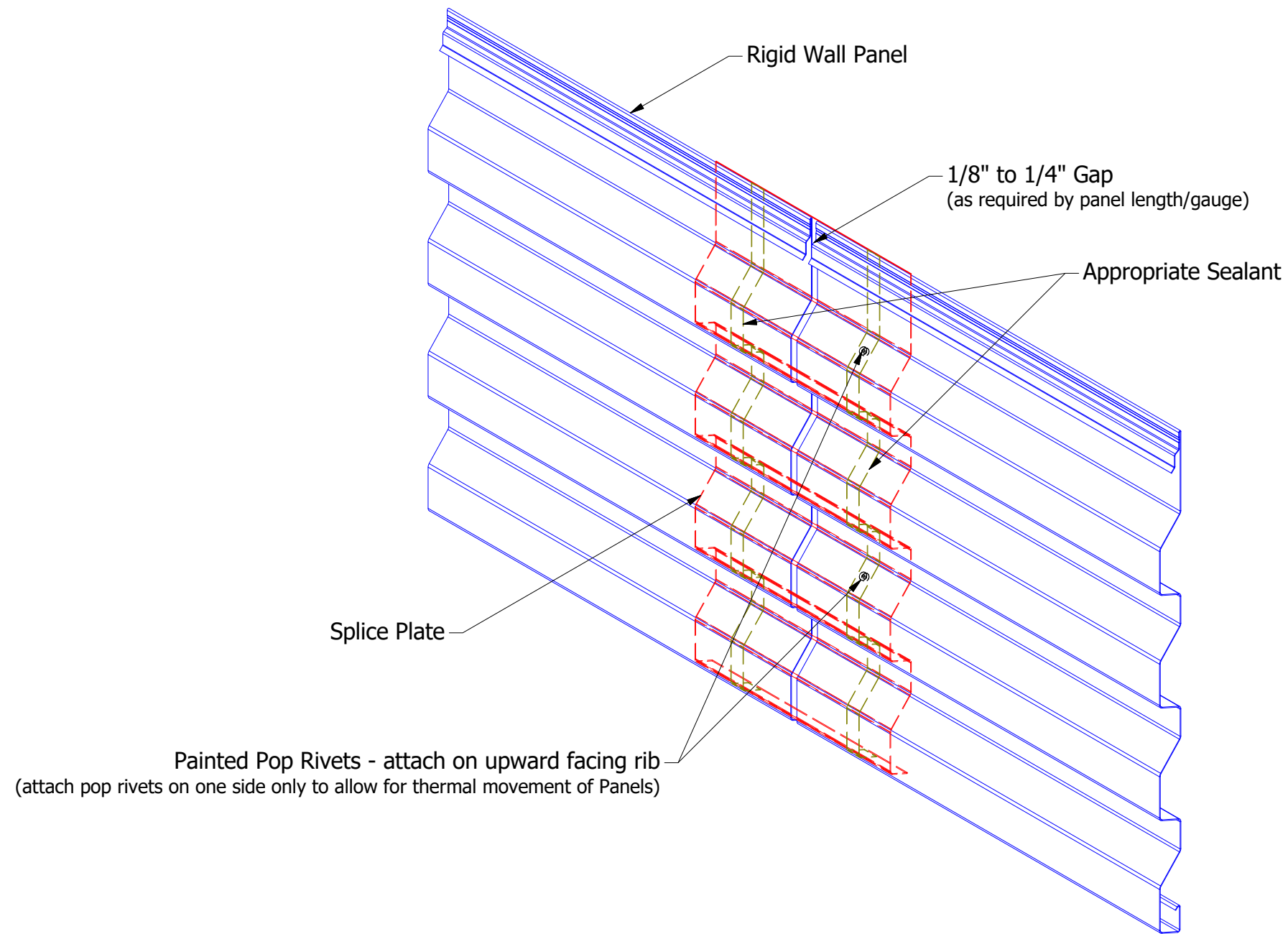
DETAIL A



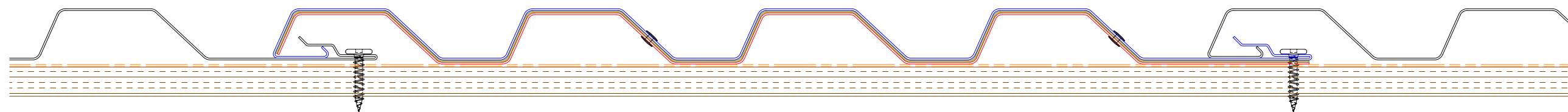
ATAS INTERNATIONAL, INC
 Allentown PA
 610-395-8445
 Mesa AZ
 480-558-7210

TITLE		Rigid Wall Panel Detail	
DWG. NO.	DR	DATE	7/5/2016
	DMR		
	APP	DAS	DATE 7/26/16
MATERIAL	SH. SIZE	B	SCALE X:X

REV. NO.	DATE	DESCRIPTION OF REVISION	BY	APP



Painted Pop Rivets - attach on upward facing rib
 (attach pop rivets on one side only to allow for thermal movement of Panels)

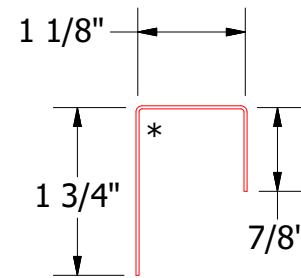
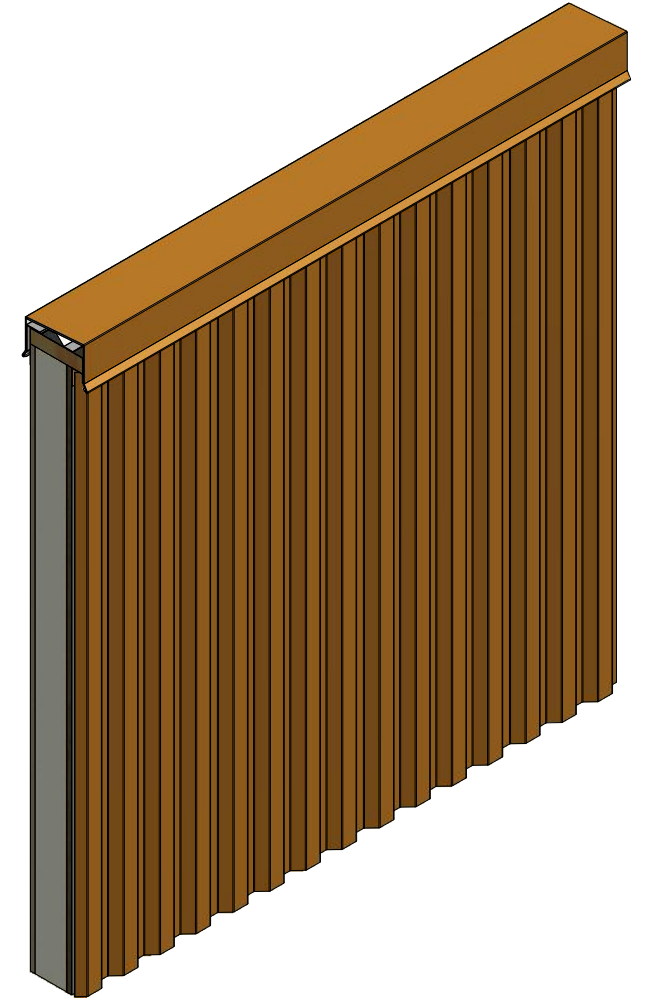
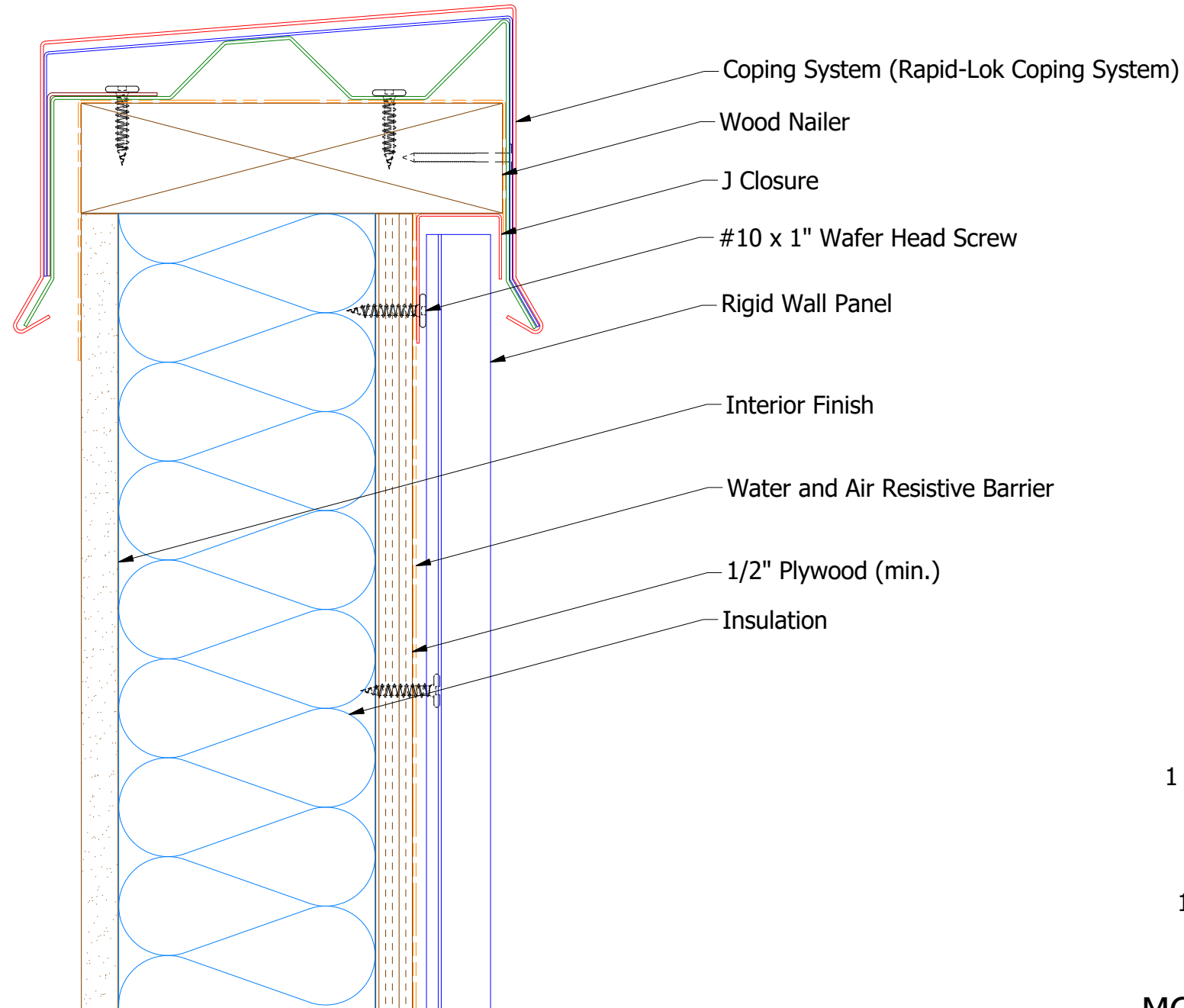


ATAS ATAS INTERNATIONAL, INC
 Allentown PA
 610-395-8445
 Mesa AZ
 480-558-7210

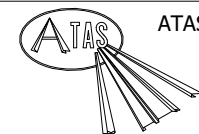
TITLE		Rigid Wall Panel Splice Detail	
DWG. NO.	DR	DATE	12/22/2016
	KRK	APP	DATE
MATERIAL	SH. SIZE	SCALE	X:X

REV. NO.	DATE	DESCRIPTION OF REVISION	BY	APP

Vertical Panel



MCA270 - J Closure



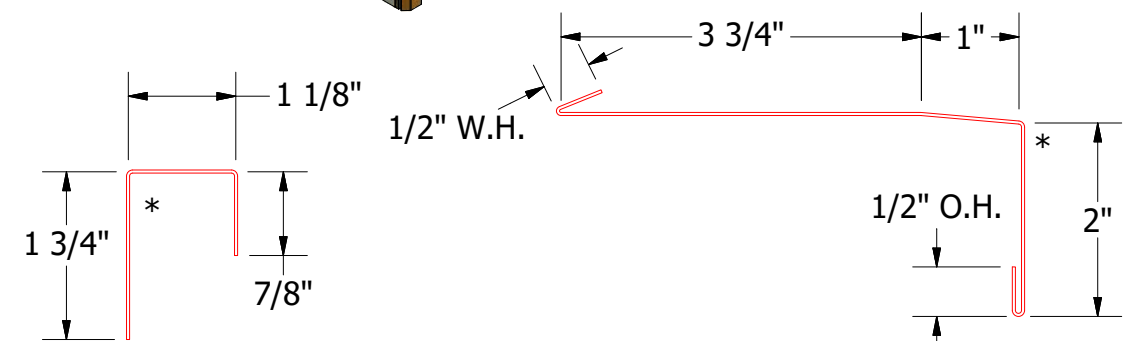
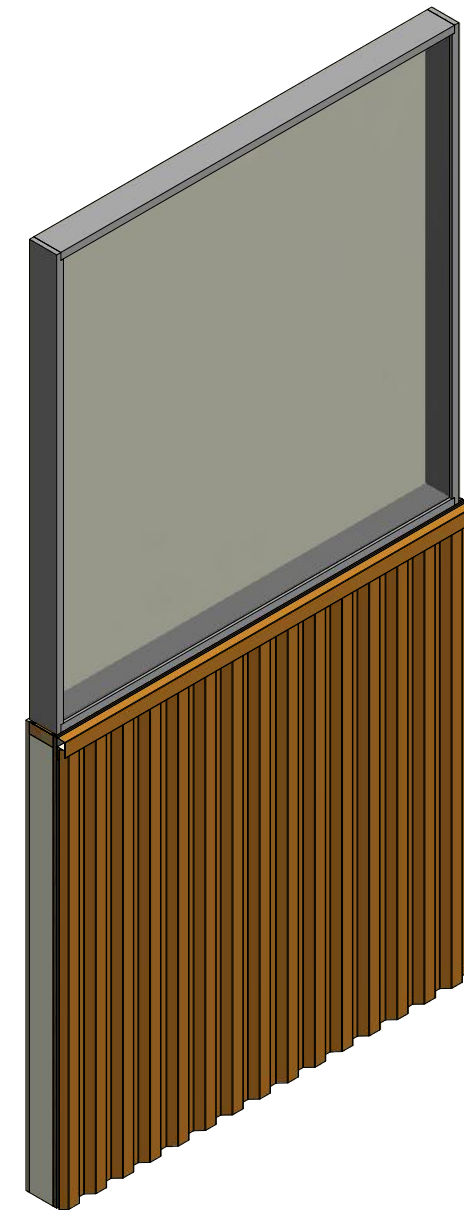
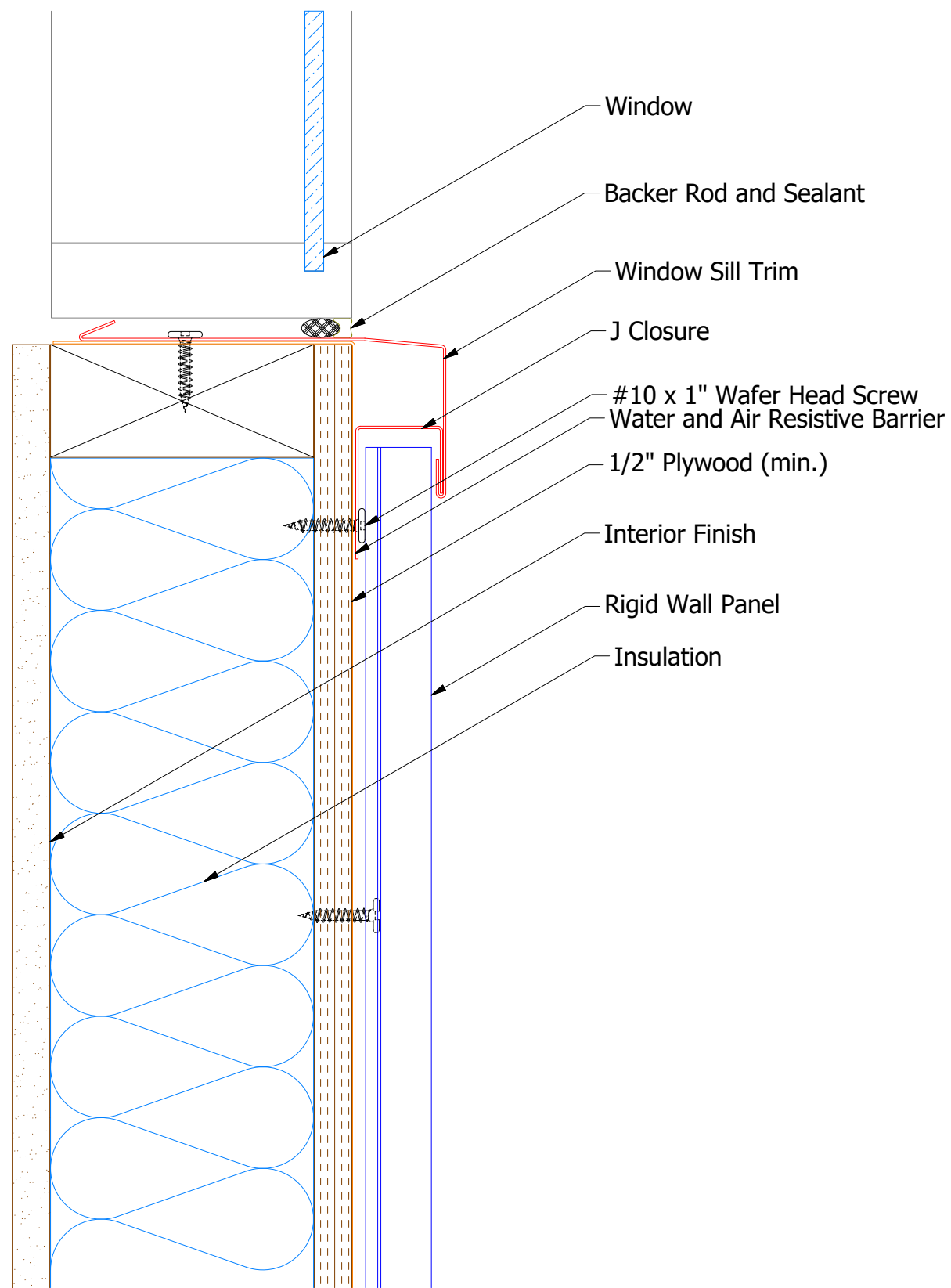
ATAS INTERNATIONAL, INC
 Allentown PA
 610-395-8445
 Mesa AZ
 480-558-7210

TITLE **Rigid Wall Top of Wall Detail**

DR	MBP	DATE	7/5/2016
APP	DAS	DATE	7/25/16
SH. SIZE	B	SCALE	X:X

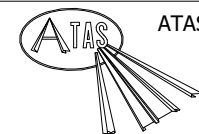
REV. NO.	DATE	DESCRIPTION OF REVISION	BY	APP

Vertical Panel



MCA270 - J Closure

MCA670 - Window Sill Trim

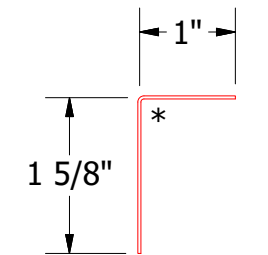
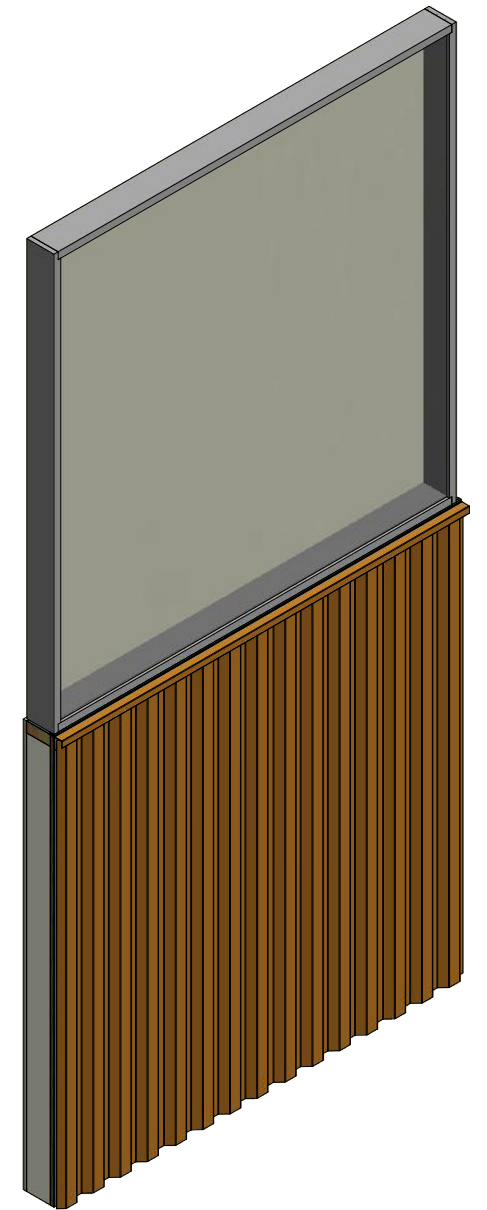
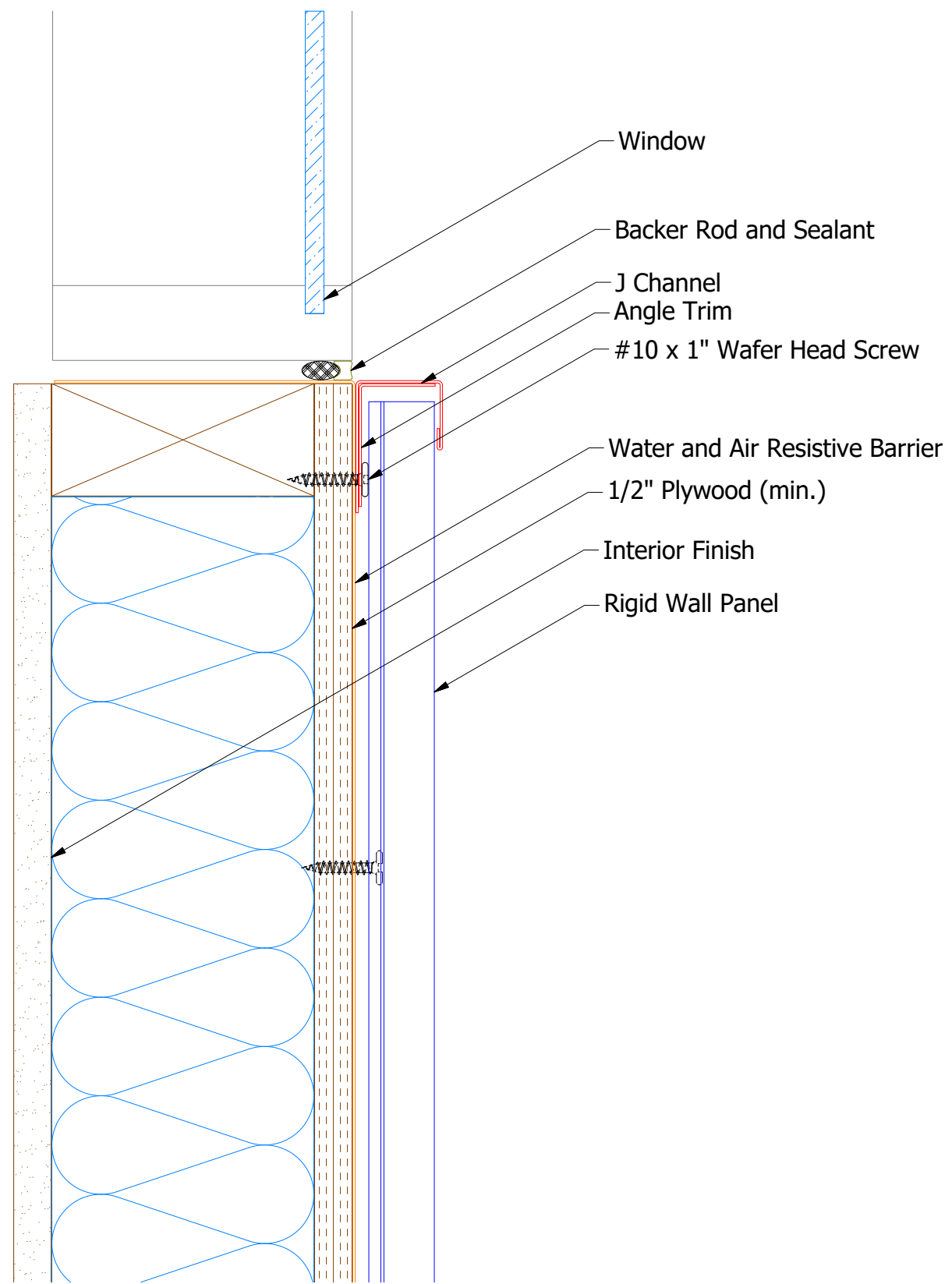


ATAS INTERNATIONAL, INC
 Allentown PA
 610-395-8445
 Mesa AZ
 480-558-7210

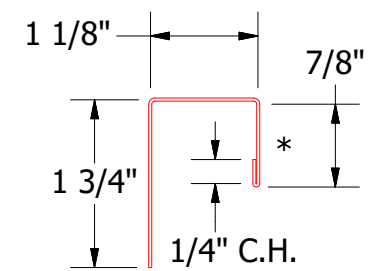
TITLE Rigid Wall Window Sill Detail

REV. NO.	DATE	DESCRIPTION OF REVISION	BY	APP	DWG. NO.	DR	DATE	7/5/2016
						MBP		
						DAS	DATE	7/25/16
						B	SCALE	X:X

Vertical Panel

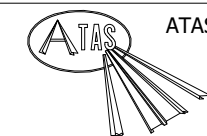


Angle Trim



J Channel

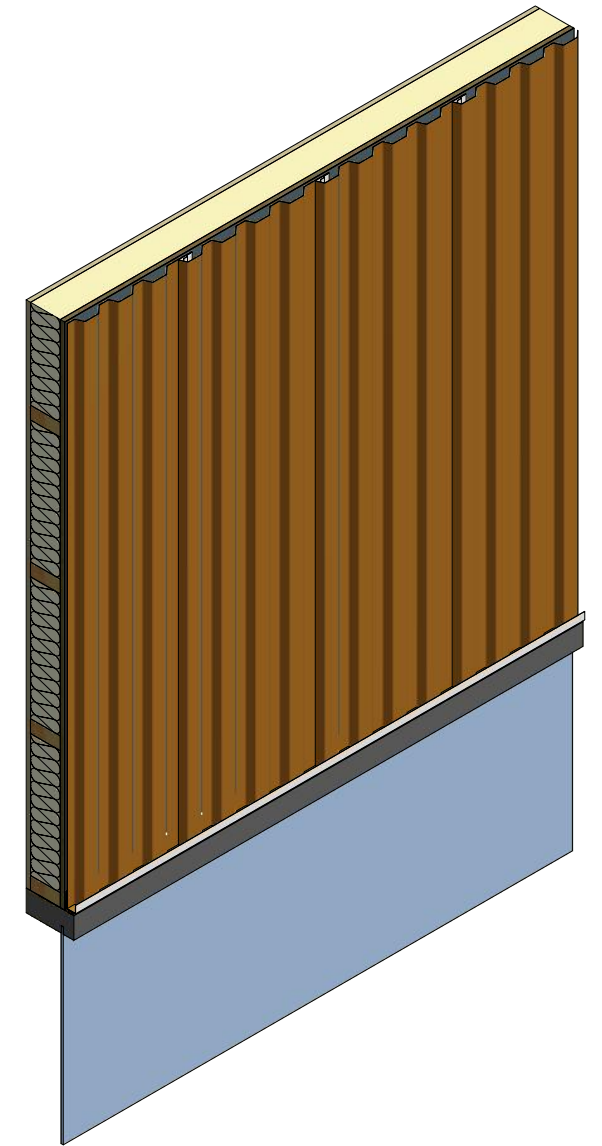
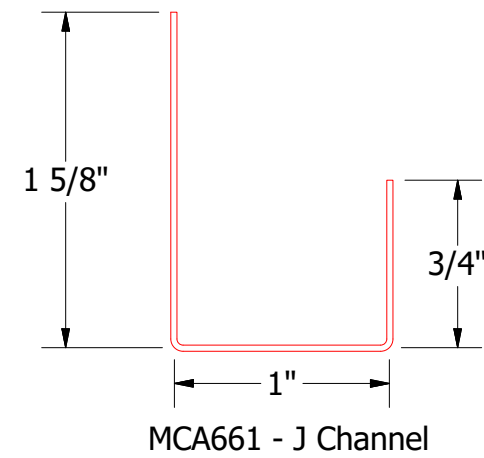
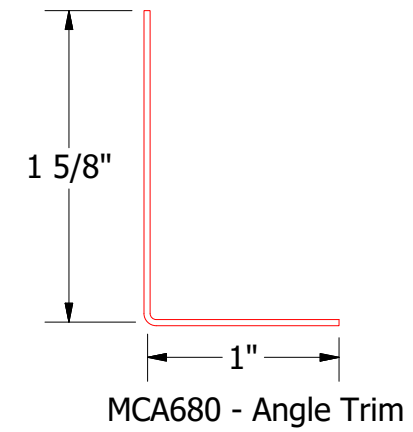
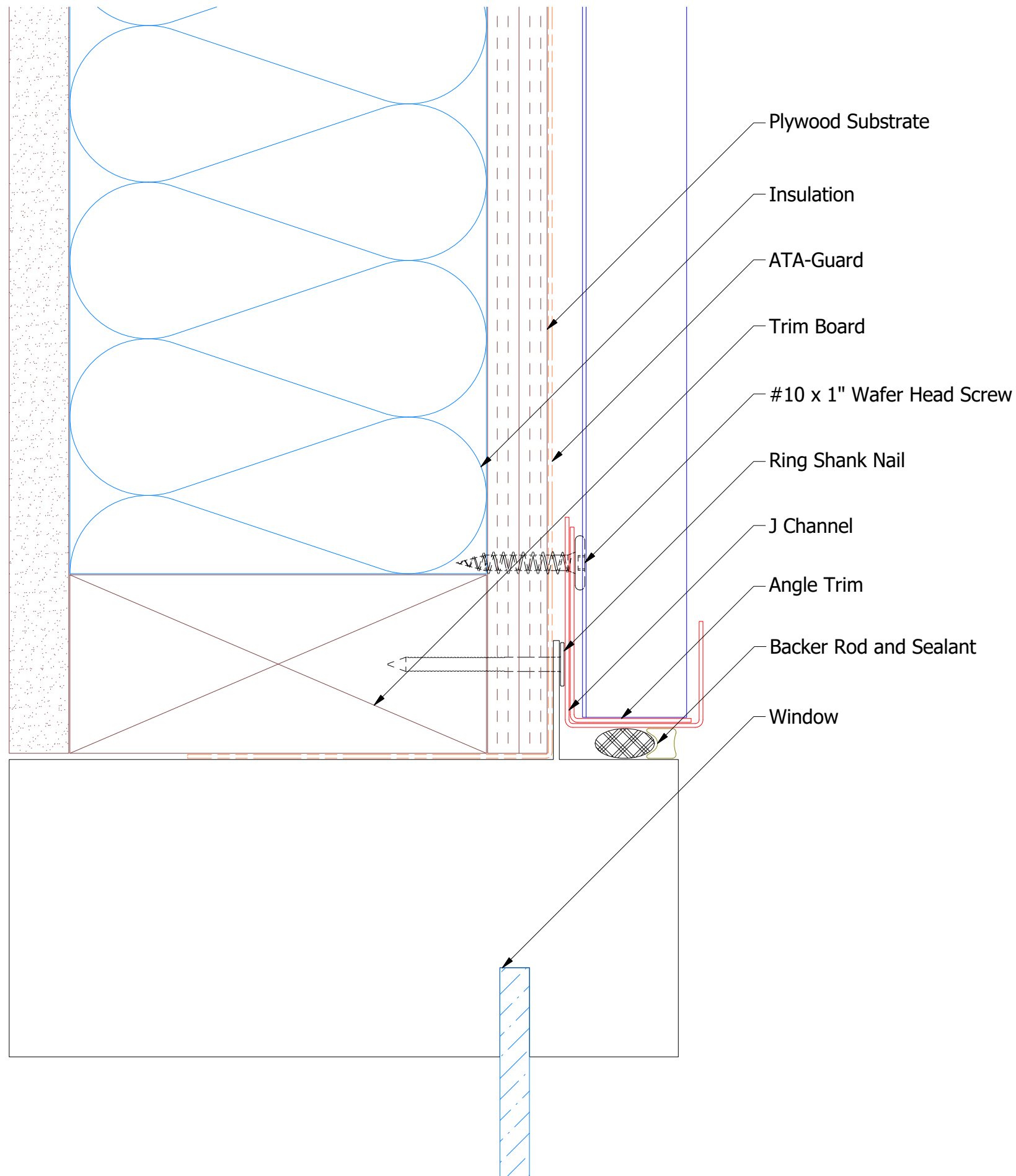
Note: * denotes color side.



ATAS INTERNATIONAL, INC
 Allentown PA
 610-395-8445
 Mesa AZ
 480-558-7210

TITLE			Rigid Wall Window Sill Detail		
DWG. NO.	DR	MBP	DATE	7/5/2016	
	APP	DAS	DATE	7/25/16	
MATERIAL	SH. SIZE	B	SCALE	X:X	

REV. NO.	DATE	DESCRIPTION OF REVISION	BY	APP



ATAS INTERNATIONAL, INC
 Allentown PA
 610-395-8445
 Mesa AZ
 480-558-7210

TITLE				
DWG. NO.			DR	DATE
			JAC	7/31/2018
MATERIAL			APP	DATE
			SH. SIZE	SCALE
			B	X:X
REV. NO.	DATE	DESCRIPTION OF REVISION	BY	APP