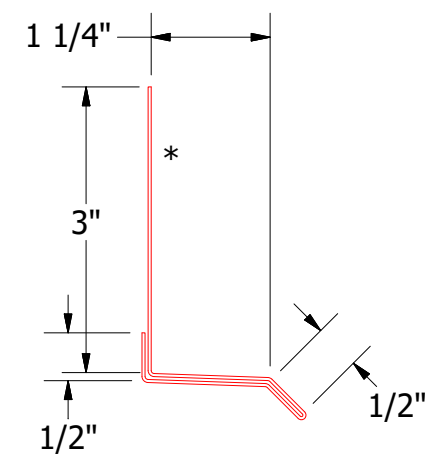
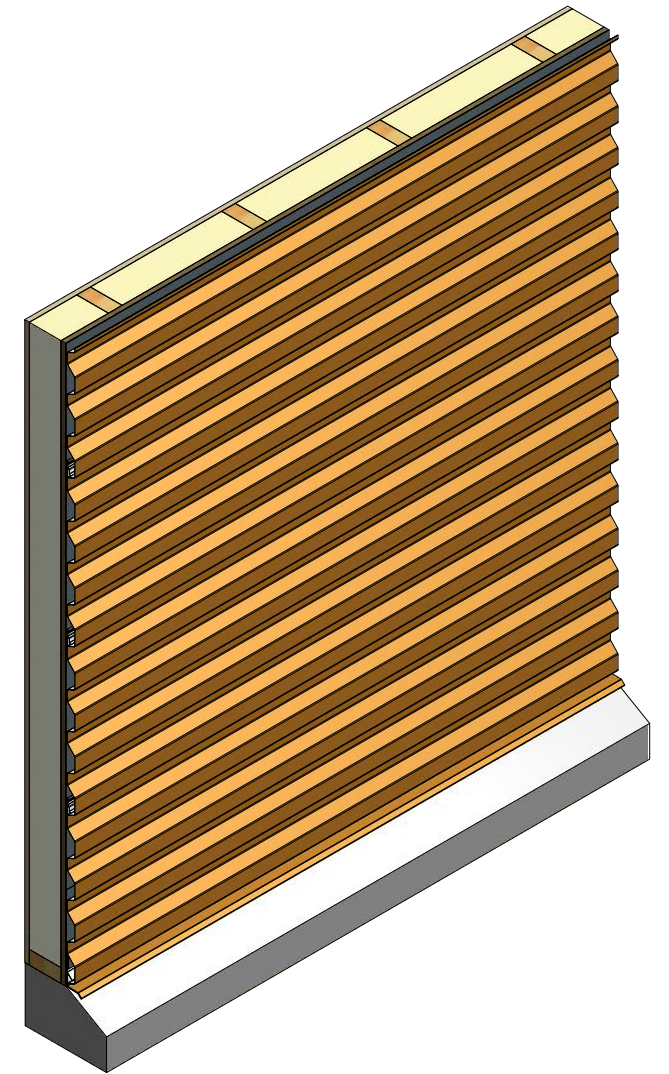
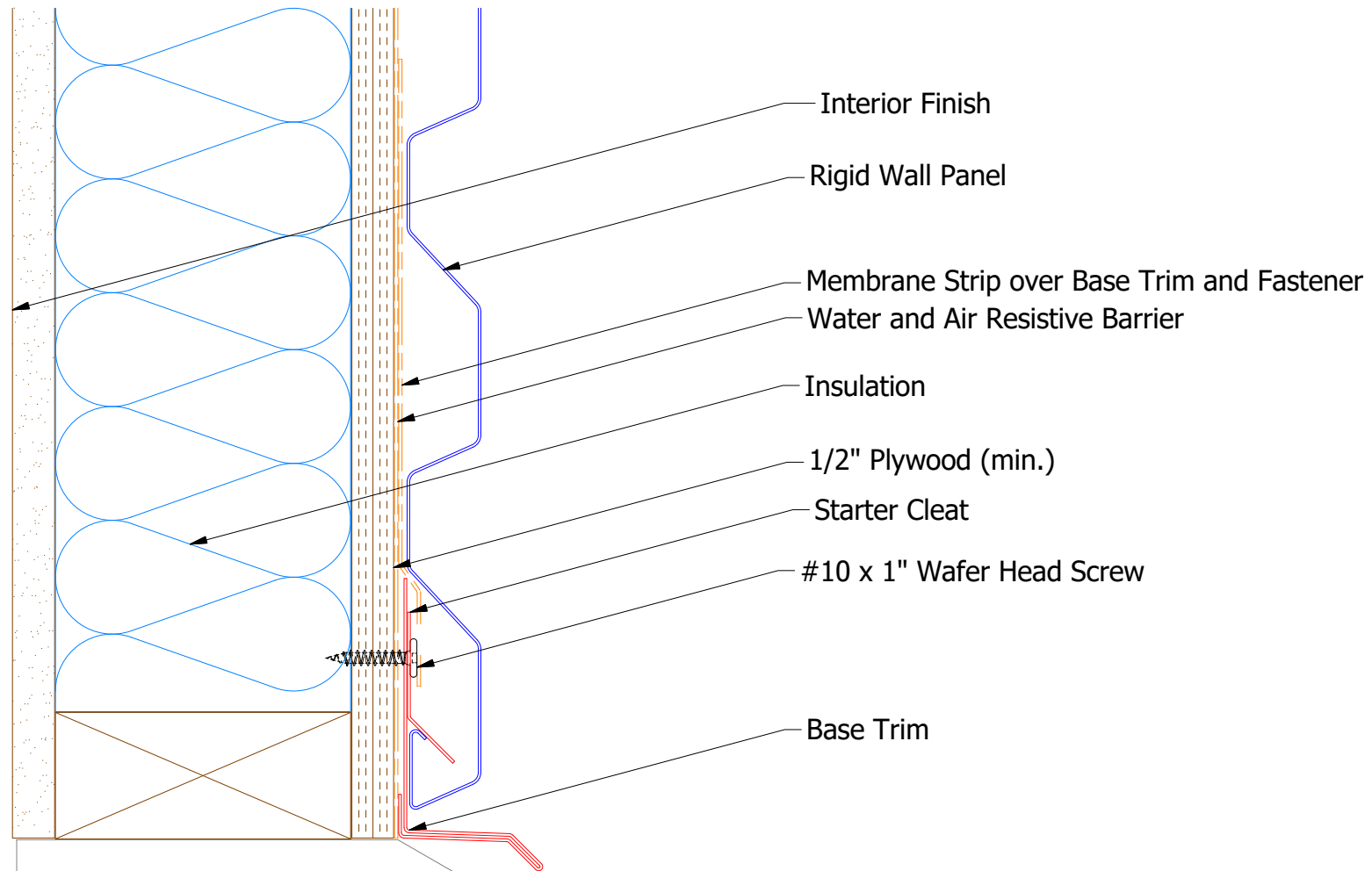
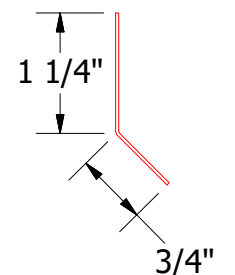


Horizontal Panel



MCA661 - Base Trim

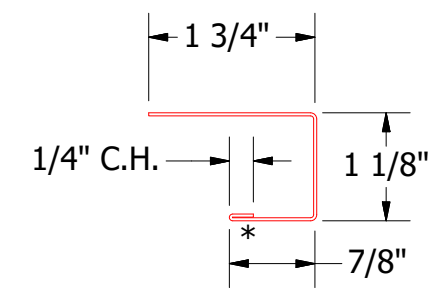
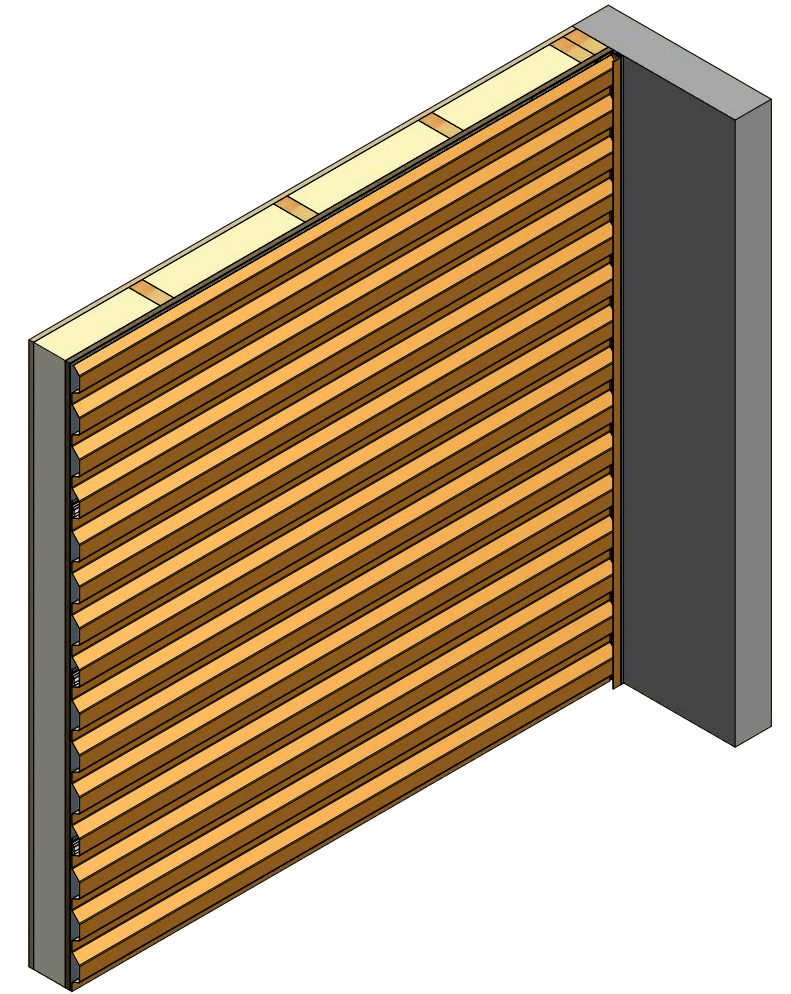
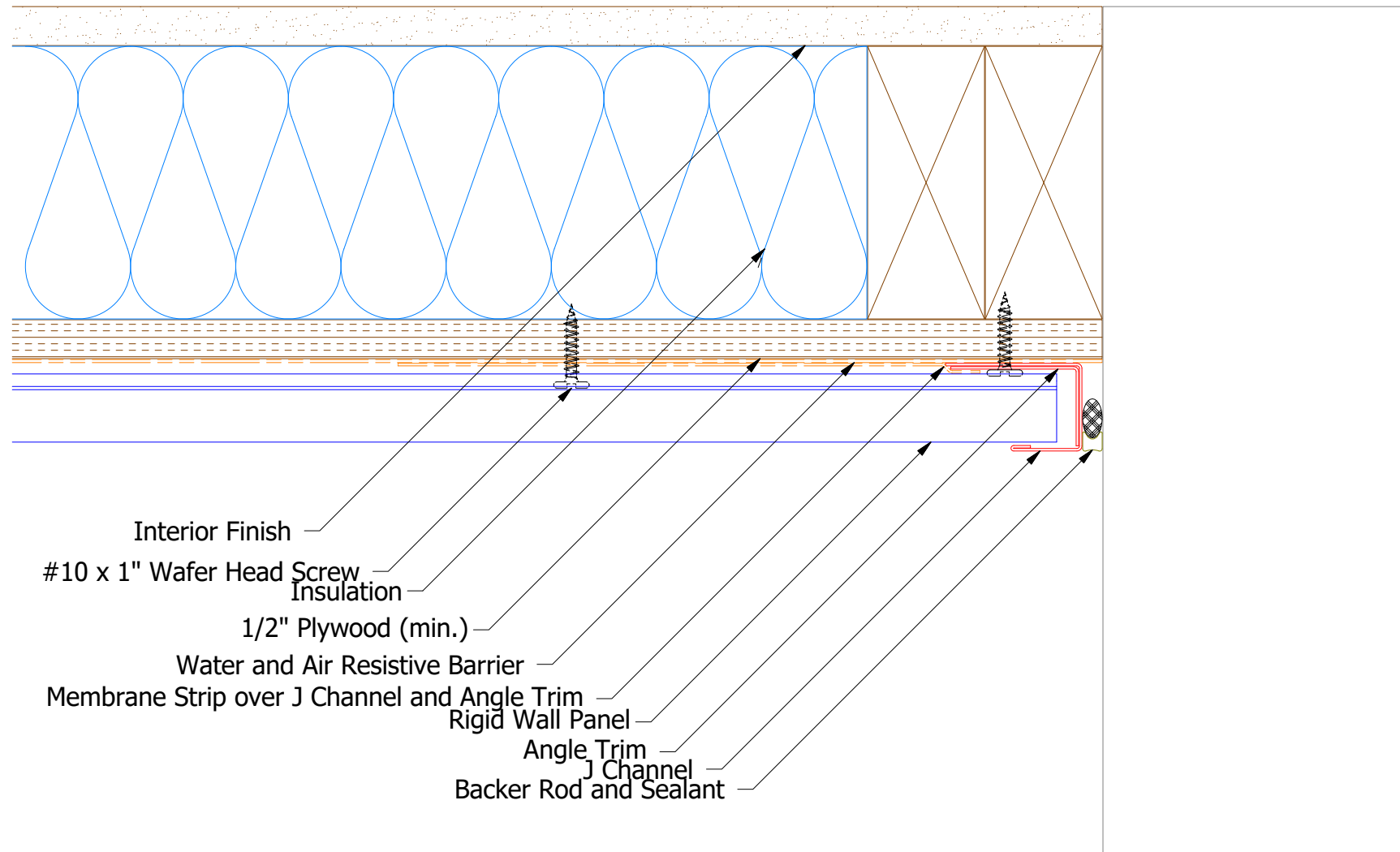


MCA995 - Starter Cleat

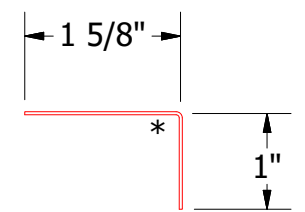
ATAS ATAS INTERNATIONAL, INC
 Allentown PA
 610-395-8445
 Mesa AZ
 480-558-7210

REV. NO.				DATE				DESCRIPTION OF REVISION				BY		APP	
TITLE								Rigid Wall Base Detail							
DWG. NO.								DR		DMR		DATE		7/1/2016	
MATERIAL								APP		DAS		DATE		7/25/16	
								SH. SIZE		B		SCALE		X:X	

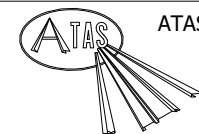
Horizontal Panel



MCA118 - J Channel



MCA680 - Angle Trim

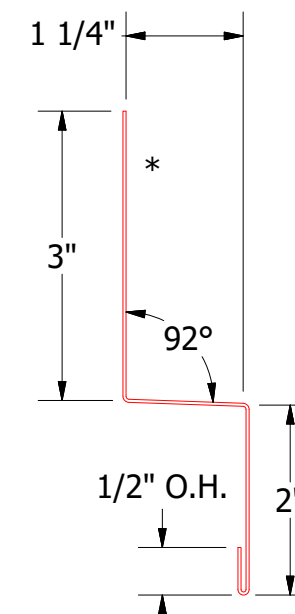
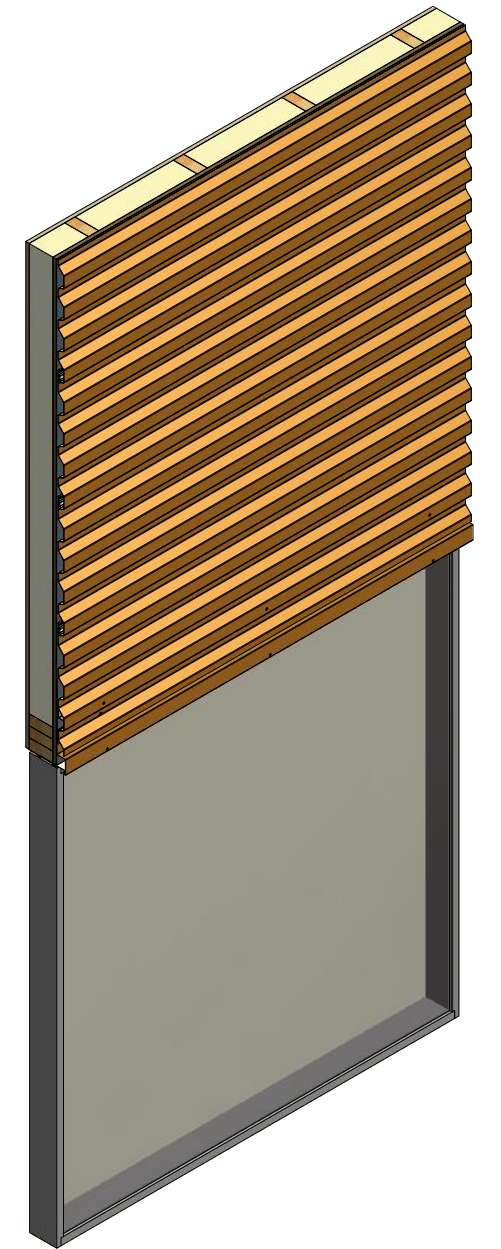
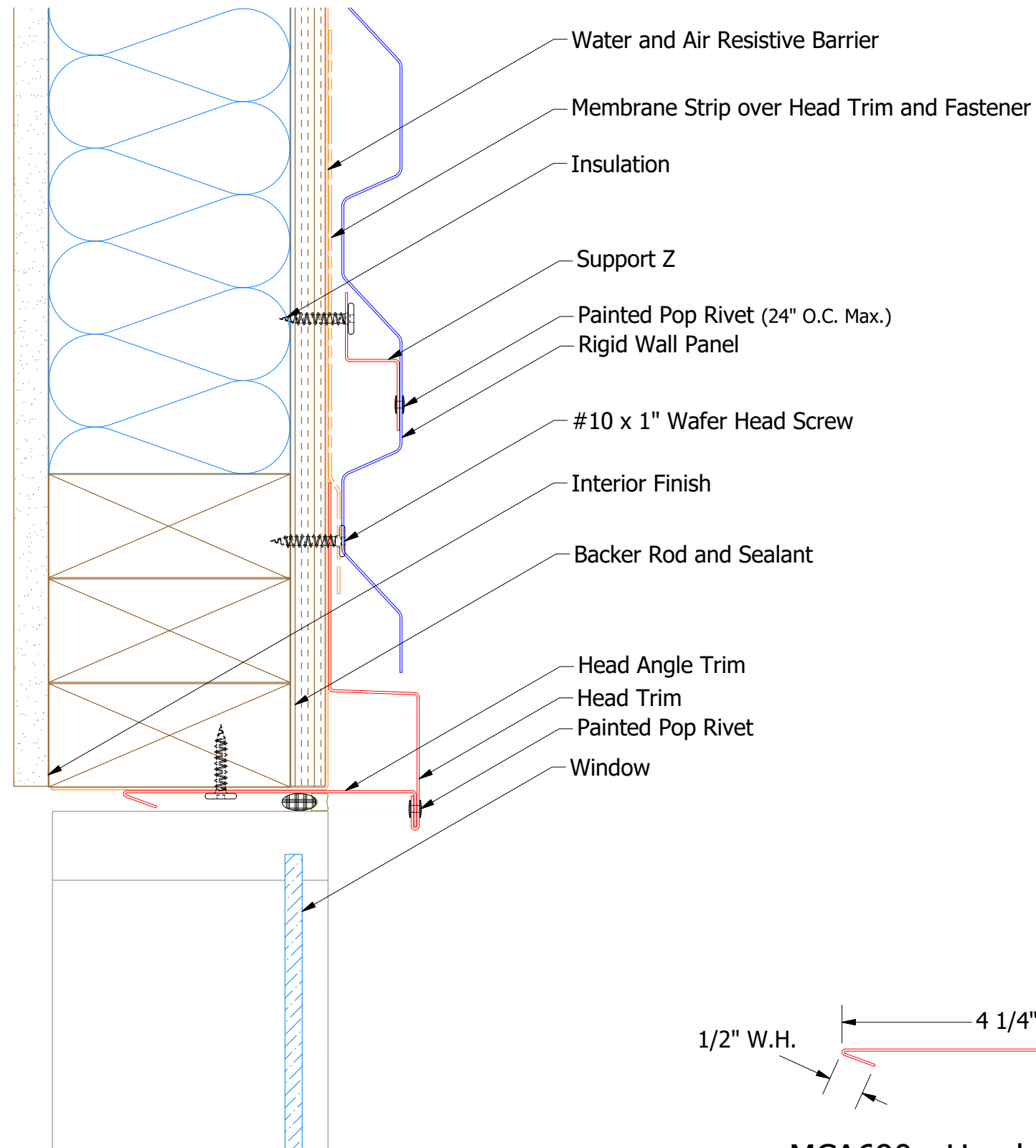


ATAS INTERNATIONAL, INC
 Allentown PA
 610-395-8445
 Mesa AZ
 480-558-7210

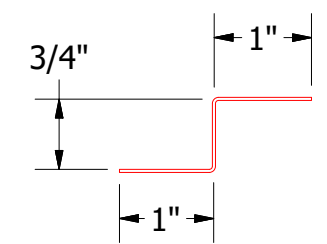
TITLE Rigid Wall Endwall Detail

REV. NO.	DATE	DESCRIPTION OF REVISION	BY	APP	DWG. NO.	DR	DMR	DATE	7/1/2016
						APP	DAS	DATE	7/25/16
						SH. SIZE	B	SCALE	X:X

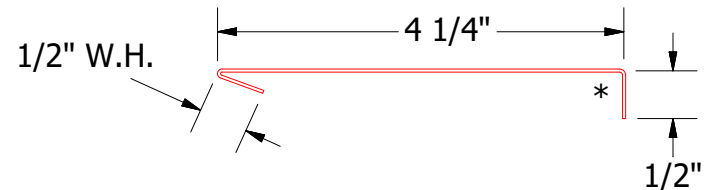
Horizontal Panel



MCA550 - Head Trim



MCA681 - Support Z



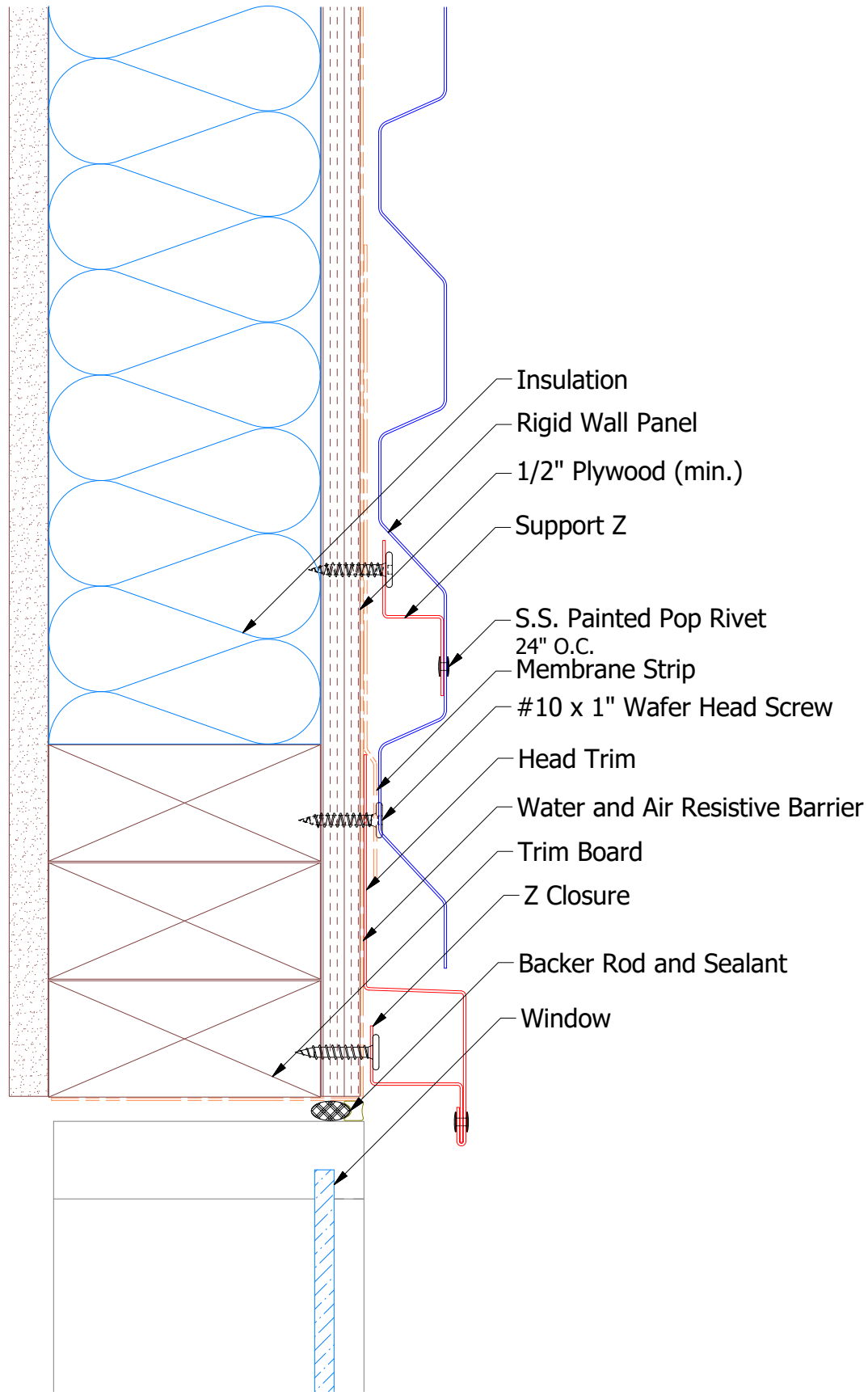
MCA690 - Head Angle Trim

ATAS ATAS INTERNATIONAL, INC
 Allentown PA
 610-395-8445
 Mesa AZ
 480-558-7210

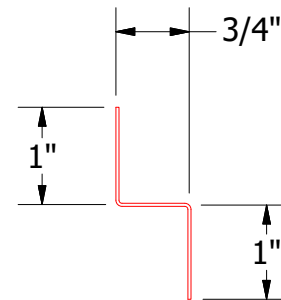
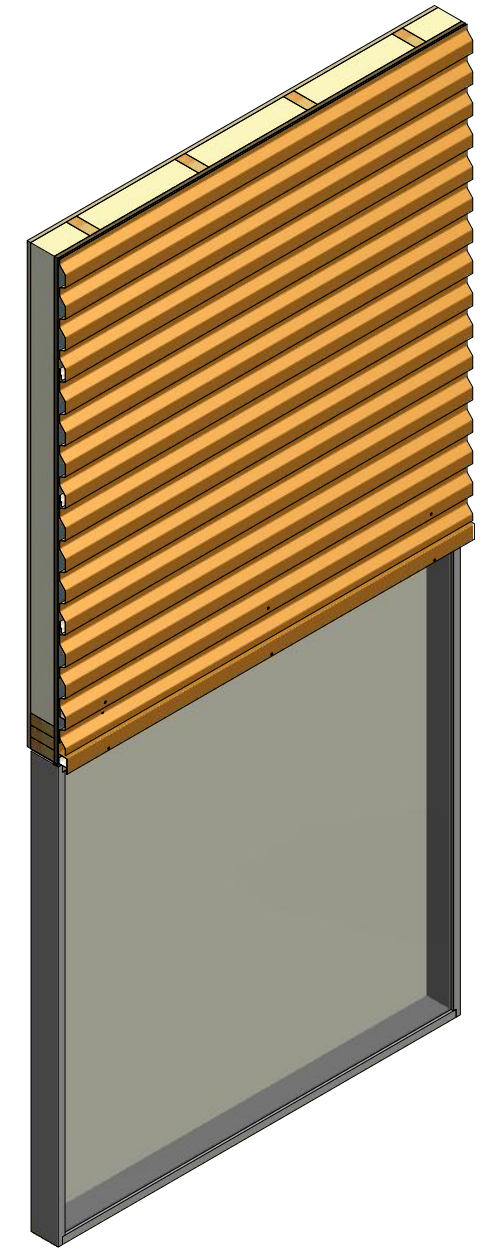
TITLE **Rigid Wall Head Detail**

REV. NO.	DATE	DESCRIPTION OF REVISION	BY	APP	DR	DMR	DATE	7/1/2016
					APP	DAS	DATE	7/25/16
					SH. SIZE	B	SCALE	X:X

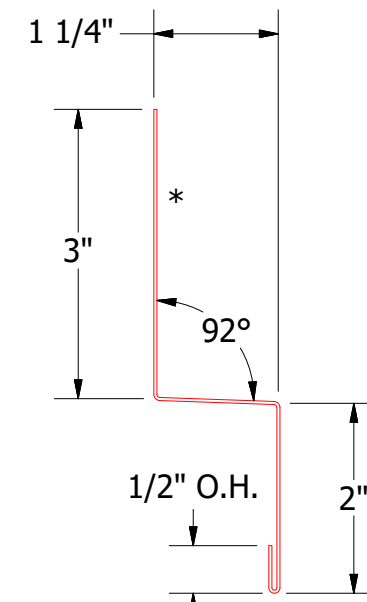
Horizontal Panel



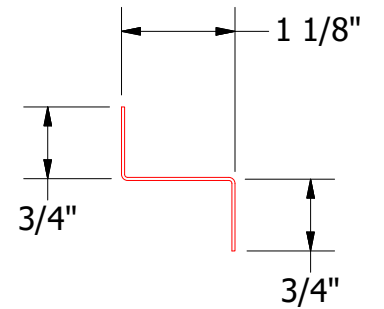
Note: * denotes color side.




Support Z



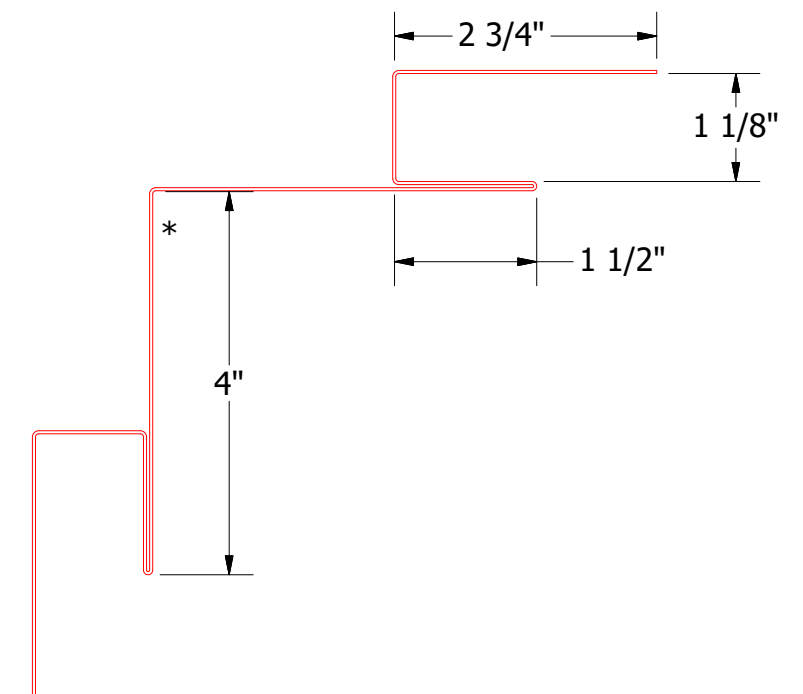
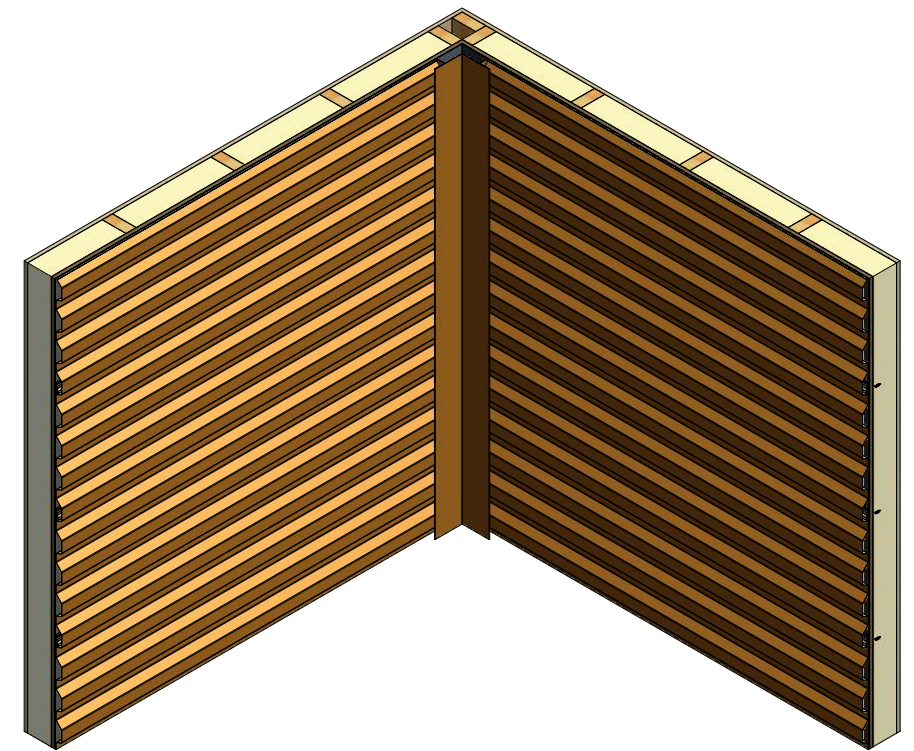
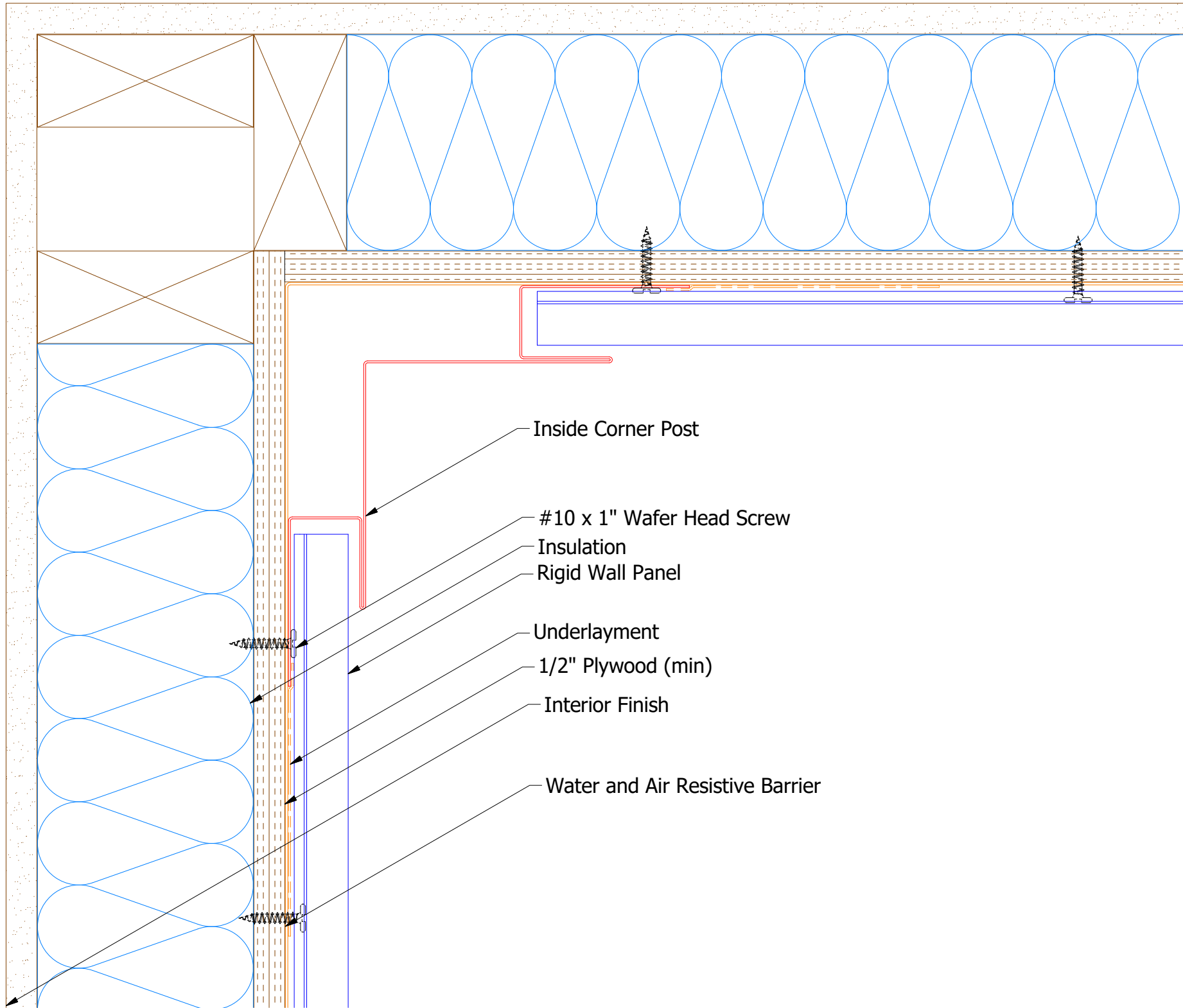
Head Trim



Head Support Z

REV. NO.	DATE	DESCRIPTION OF REVISION	BY	APP	 ATAS INTERNATIONAL, INC Allentown PA 610-395-8445 Mesa AZ 480-558-7210		
TITLE					DWG. NO.	DR	DATE
Rigid Wall Existing Head Window Detail					APP	DMR	1/2/2019
					MATERIAL	SH. SIZE	SCALE
						B	X:X

Horizontal Panel



MCA601 - Inside Corner Post

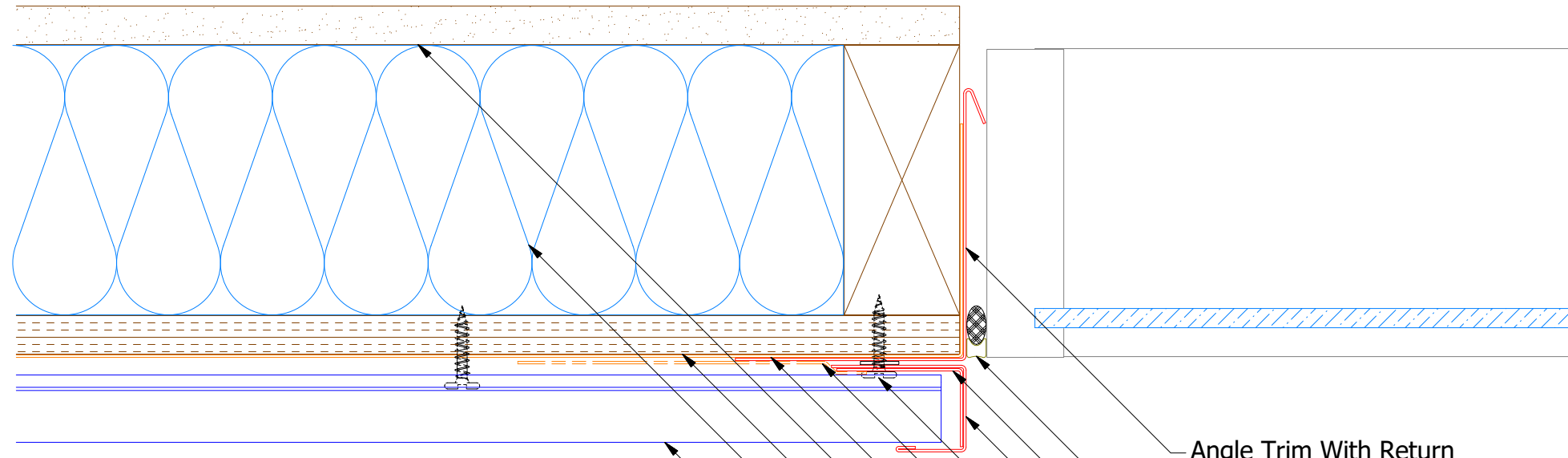


ATAS INTERNATIONAL, INC
 Allentown PA
 610-395-8445
 Mesa AZ
 480-558-7210

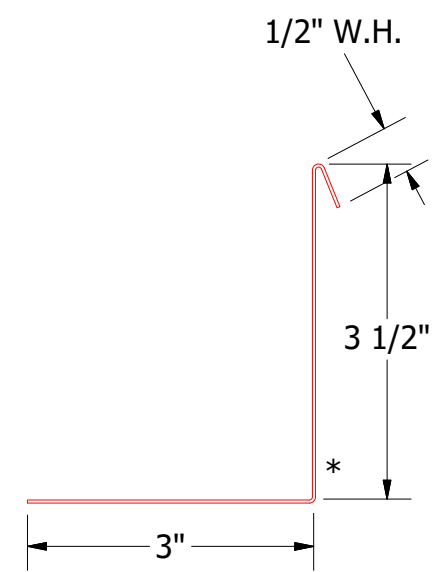
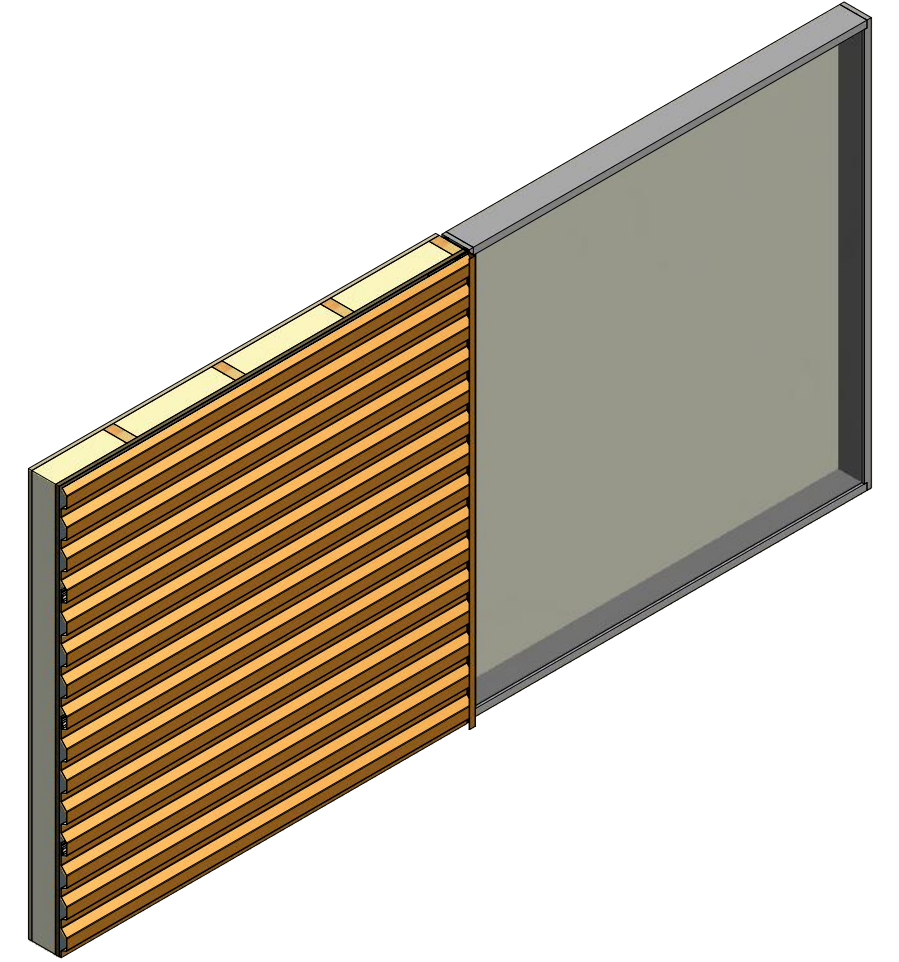
TITLE Rigid Wall Inside Corner Detail

REV. NO.	DATE	DESCRIPTION OF REVISION	BY	APP	DWG. NO.	DR	DATE	MBP	7/1/2016
						APP	DATE	DAS	7/25/16
						SH. SIZE	SCALE	B	X:X

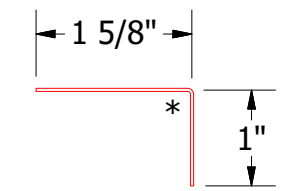
Horizontal Panel



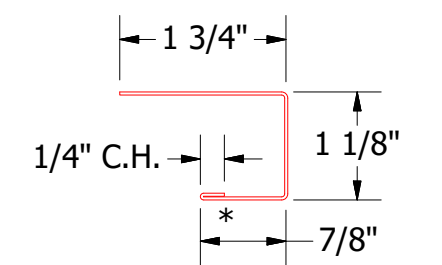
- Angle Trim With Return
- Backer Rod and Sealant
- Angle Trim
- J Channel
- #10 x 1" Wafer Head Screw
- Membrane Strip over J Channel and Angle Trim
- Water and Air Resistive Barrier
- Interior Finish
- 1/2" Plywood (min.)
- Insulation
- Rigid Wall Panel



MCA683 - Angle Trim With Return



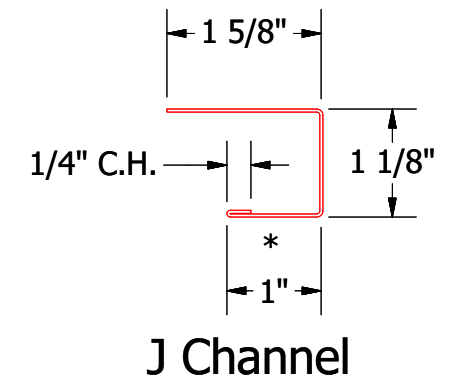
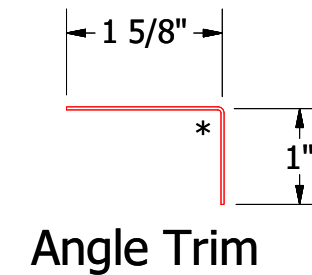
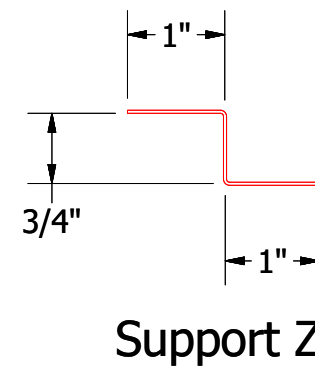
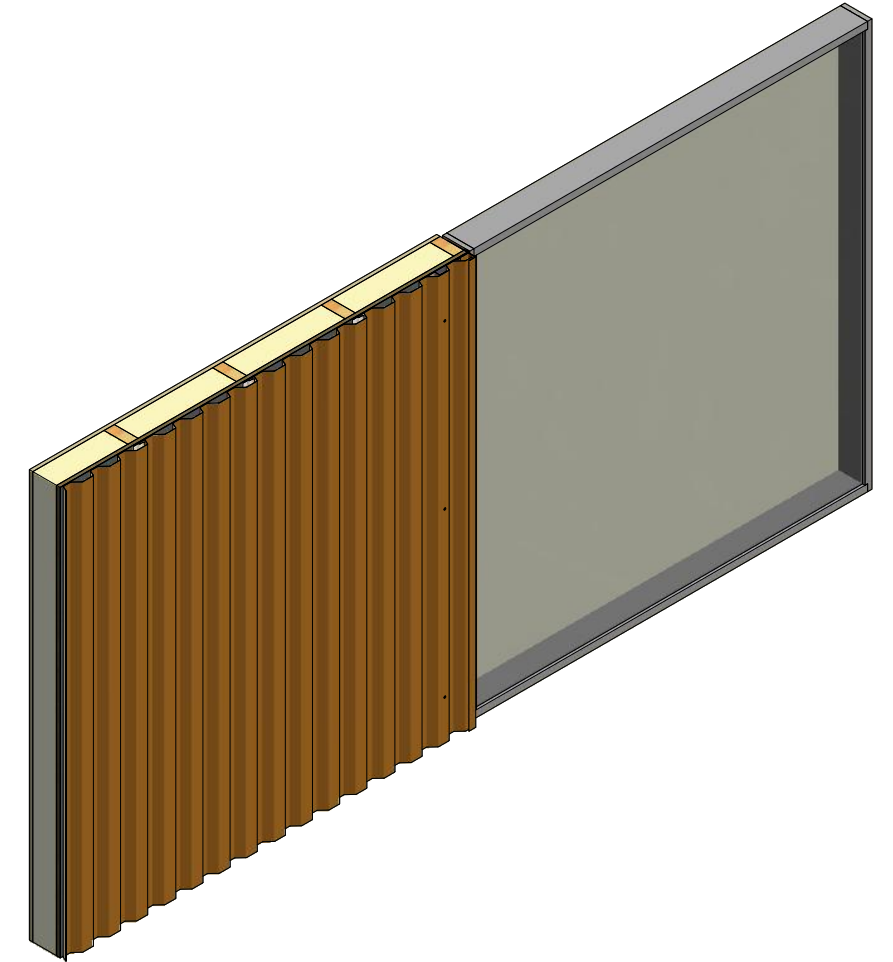
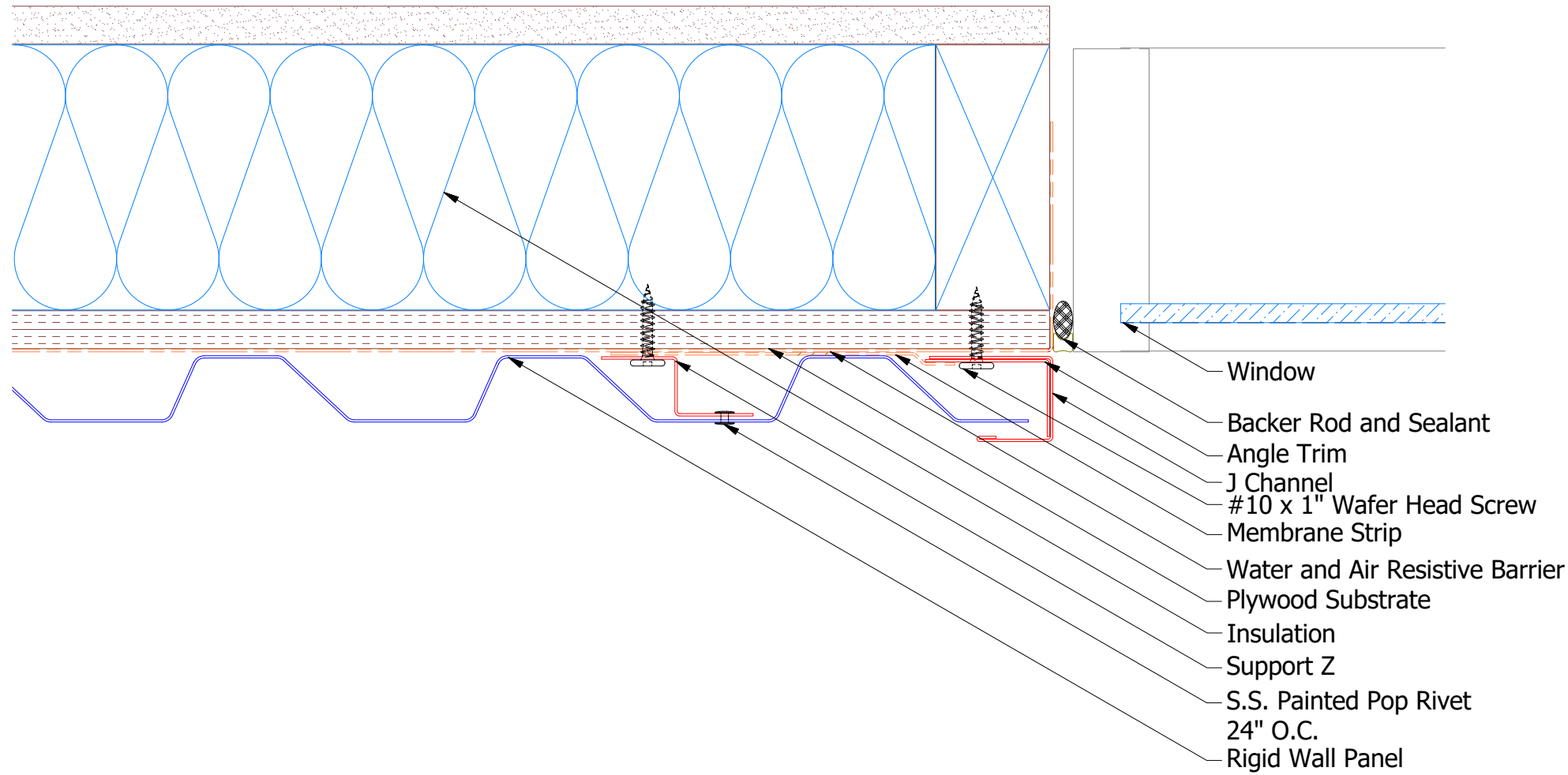
MCA680 - Angle Trim



MCA118 - J Channel

REV. NO.		DATE	DESCRIPTION OF REVISION	BY	APP	TITLE		Rigid Wall Jamb Detail	
						DWG. NO.	DR	MBP	DATE
						MATERIAL	APP	DAS	DATE
						SH. SIZE	B	SCALE	X:X
						ATAS INTERNATIONAL, INC		Allentown PA 610-395-8445 Mesa AZ 480-558-7210	

Vertical Panel



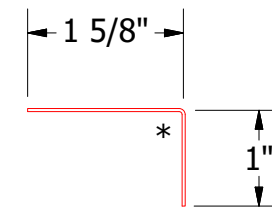
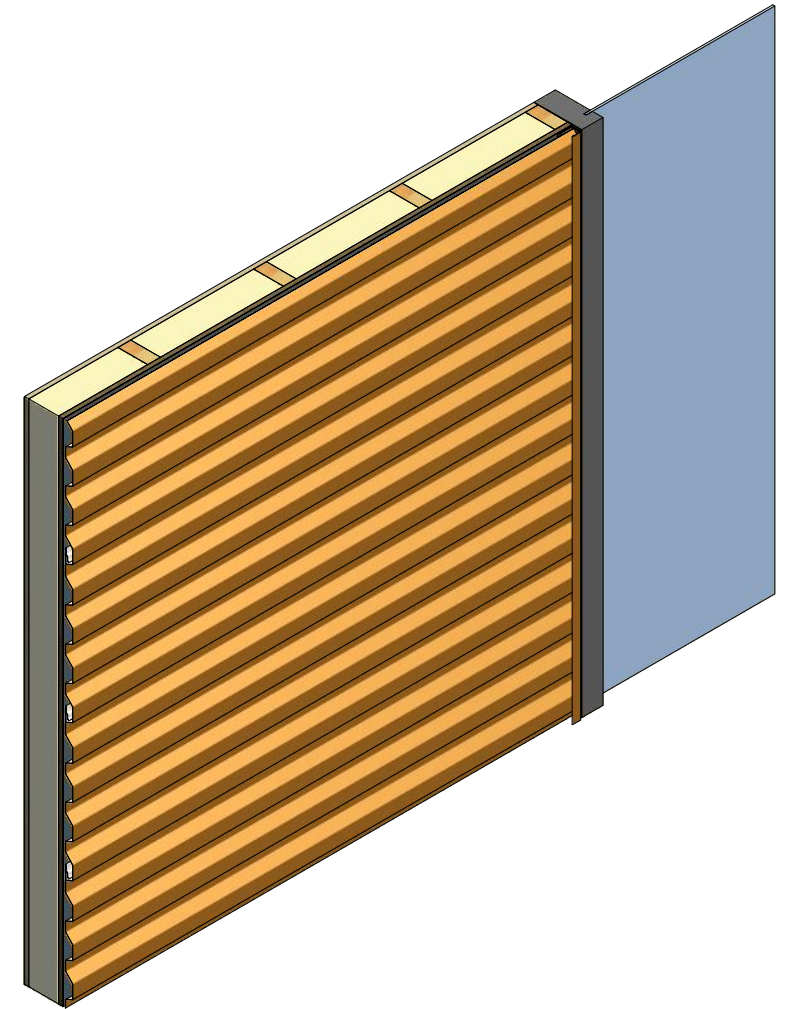
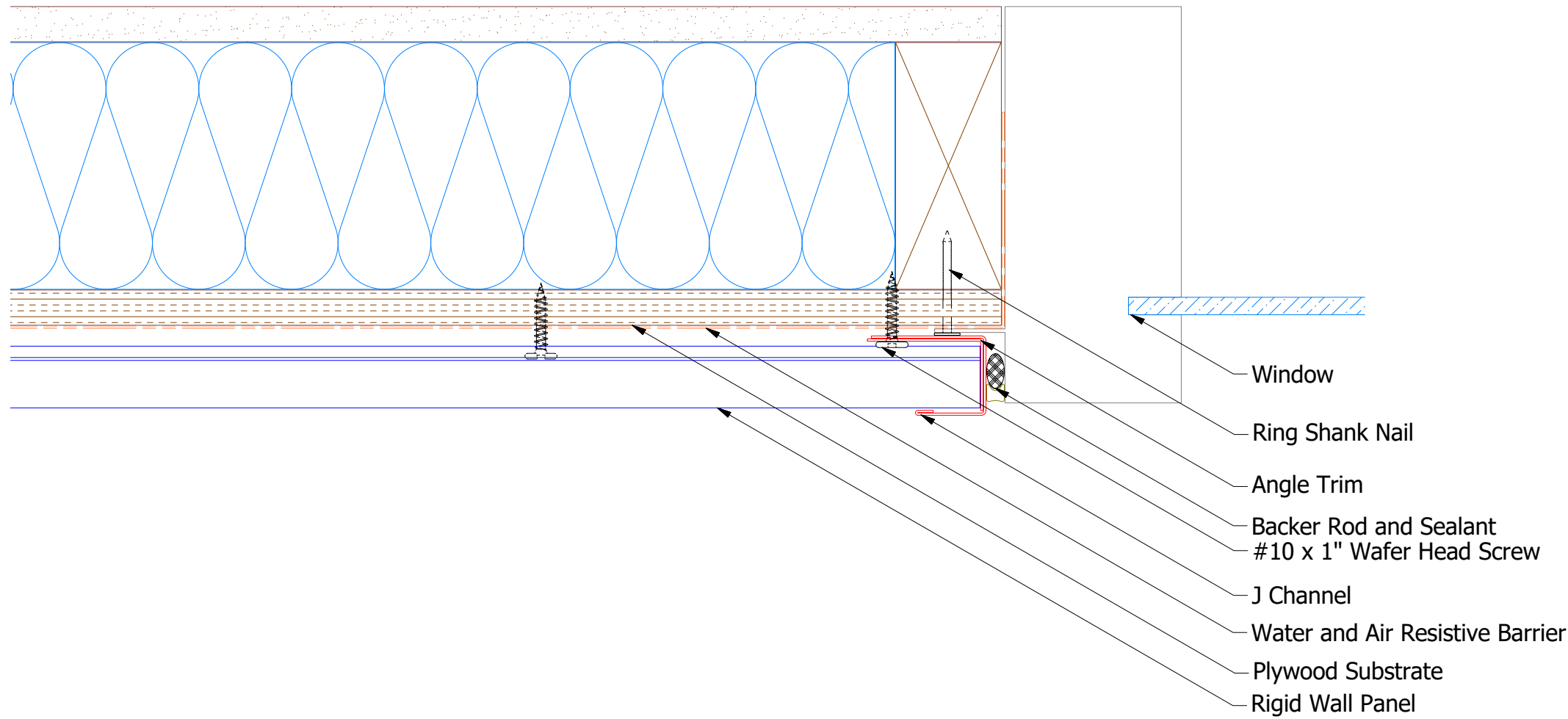
Note: * denotes color side.

ATAS ATAS INTERNATIONAL, INC
 Allentown PA
 610-395-8445
 Mesa AZ
 480-558-7210

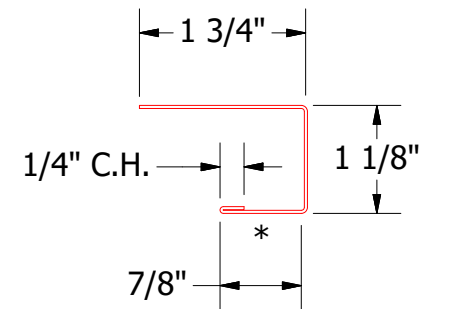
TITLE: Rigid Wall Jamb Existing Wall Detail

DWG. NO.	DR	DATE				
	DMR	1/8/2019				
MATERIAL	APP	DATE				
REV. NO.	DATE	DESCRIPTION OF REVISION	BY	APP	SH. SIZE	SCALE
					B	X:X

Horizontal Panel

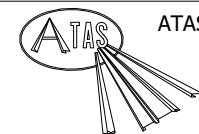


MCA680 - Angle Trim



MCA118 - J Channel

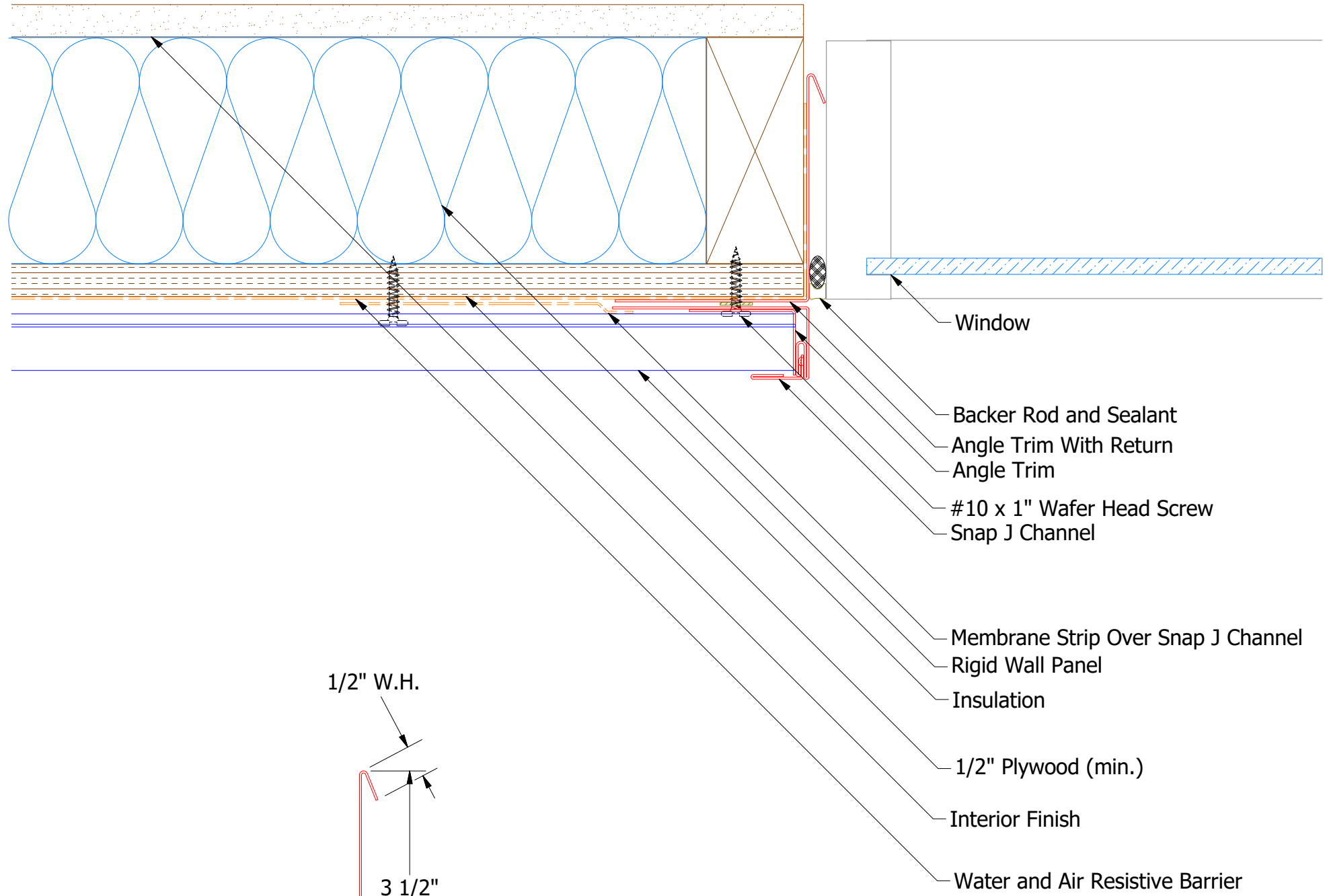
Note: * denotes color side.



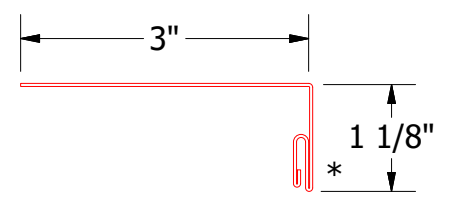
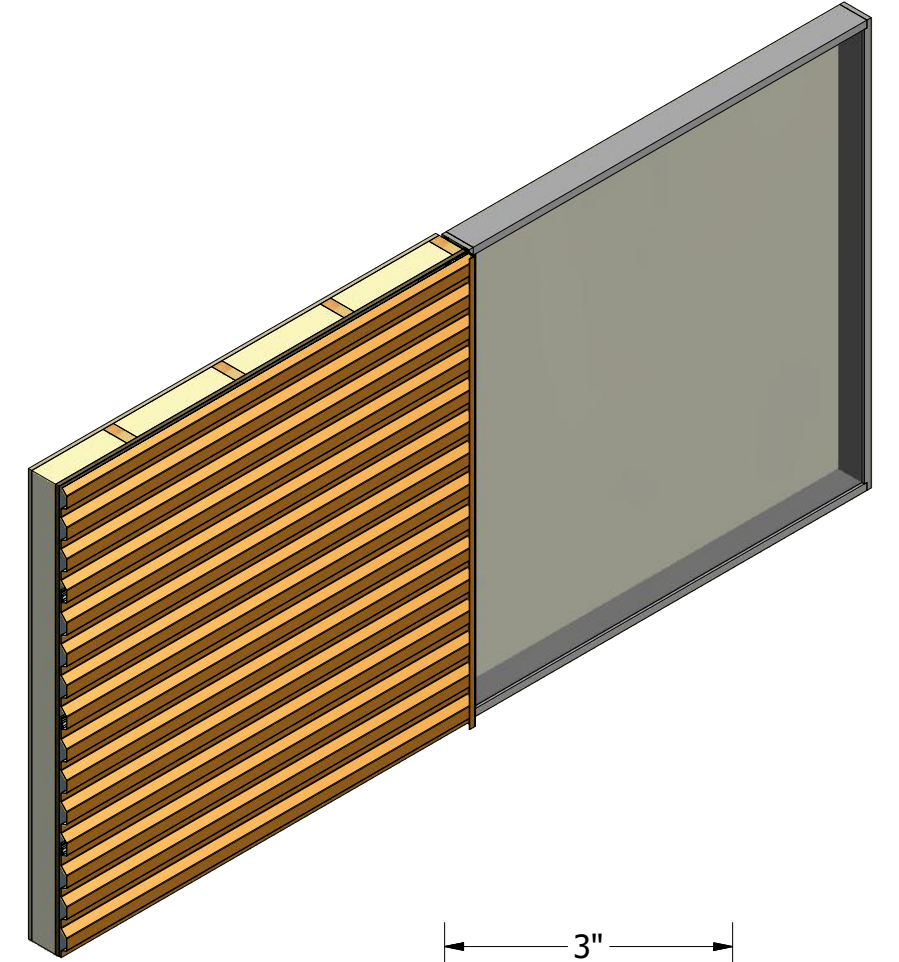
ATAS INTERNATIONAL, INC
 Allentown PA
 610-395-8445
 Mesa AZ
 480-558-7210

TITLE				Rigid Wall Jamb Window Flange Detail			
REV. NO.		DATE		DESCRIPTION OF REVISION		BY APP	
DWG. NO.		DR		DATE		1/8/2019	
MATERIAL		APP		DATE		SCALE	
		SH. SIZE		B		SCALE X:X	

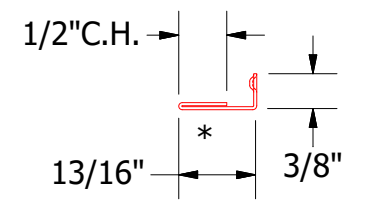
Horizontal Panel - Alternate



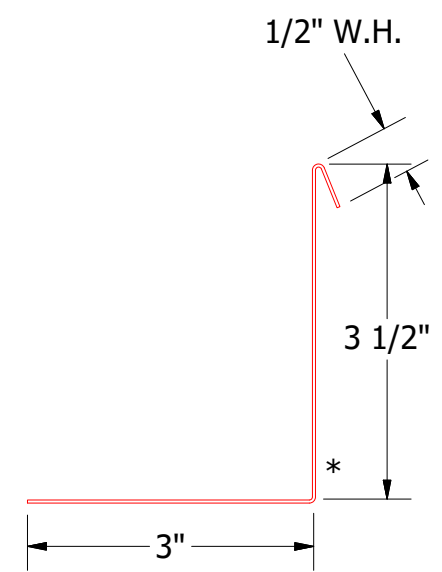
- Window
- Backer Rod and Sealant
- Angle Trim With Return
- Angle Trim
- #10 x 1" Wafer Head Screw
- Snap J Channel
- Membrane Strip Over Snap J Channel
- Rigid Wall Panel
- Insulation
- 1/2" Plywood (min.)
- Interior Finish
- Water and Air Resistive Barrier



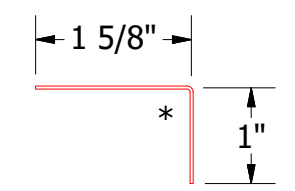
MCA119 - Snap J Base



UNS078 - Snap J Cover



MCA683 - Angle Trim With Return

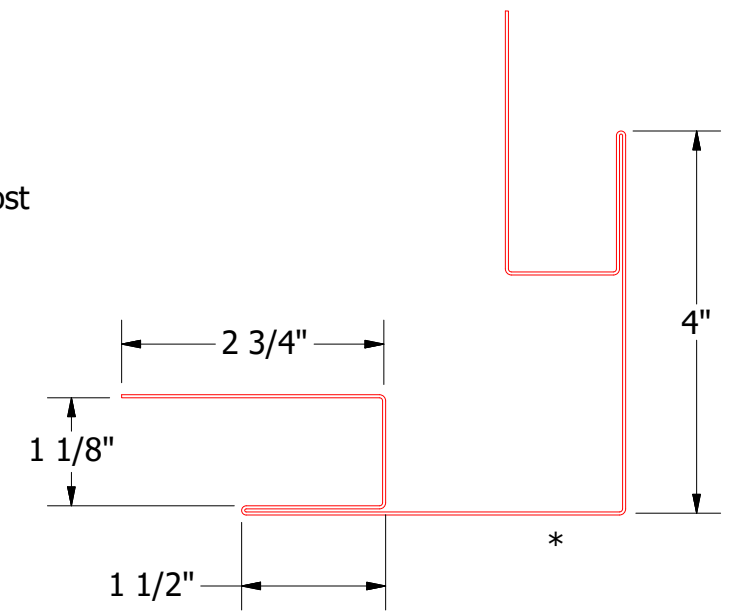
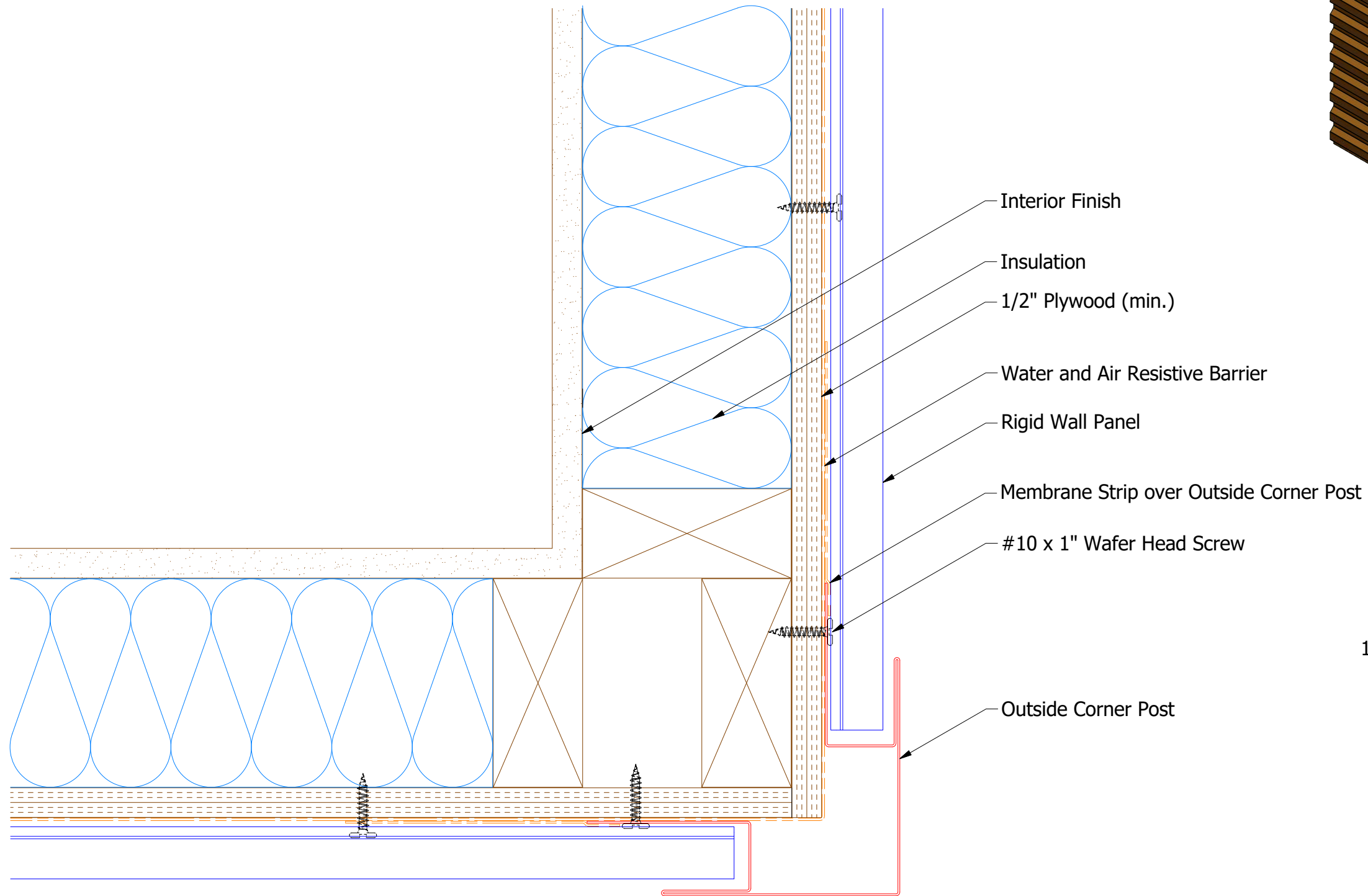
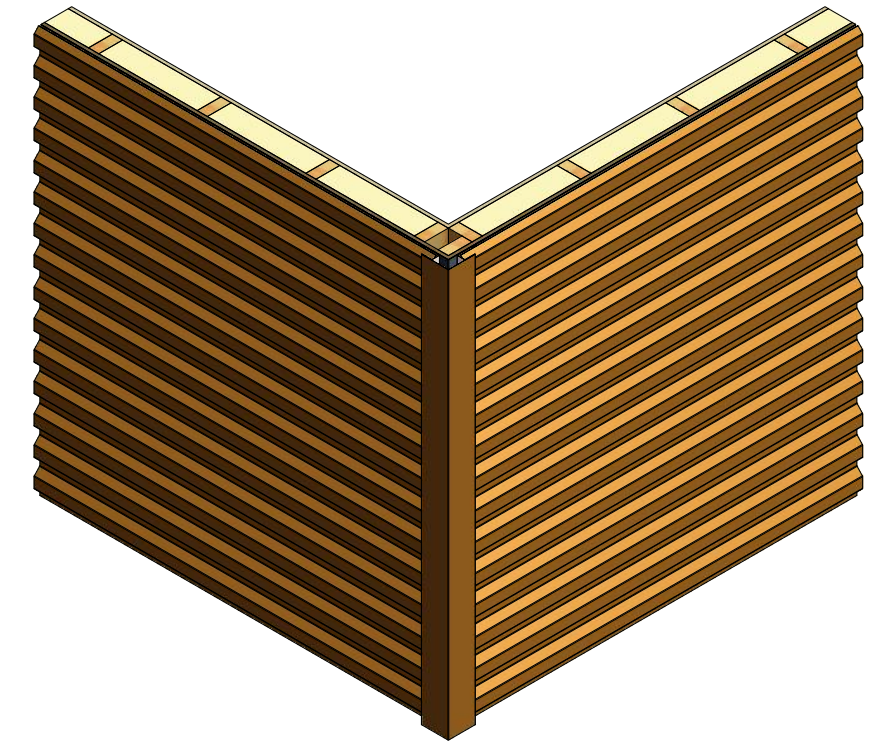


MCA680 - Angle Trim

ATAS ATAS INTERNATIONAL, INC
 Allentown PA
 610-395-8445
 Mesa AZ
 480-558-7210

REV. NO.		DATE	DESCRIPTION OF REVISION	BY	APP	TITLE Rigid Wall Jamb Alt Detail	
DR		MBP	DATE	7/5/2016		DWG. NO.	
APP		DAS	DATE	7/25/16		MATERIAL	
SH. SIZE		B	SCALE	X:X			

Horizontal Panel

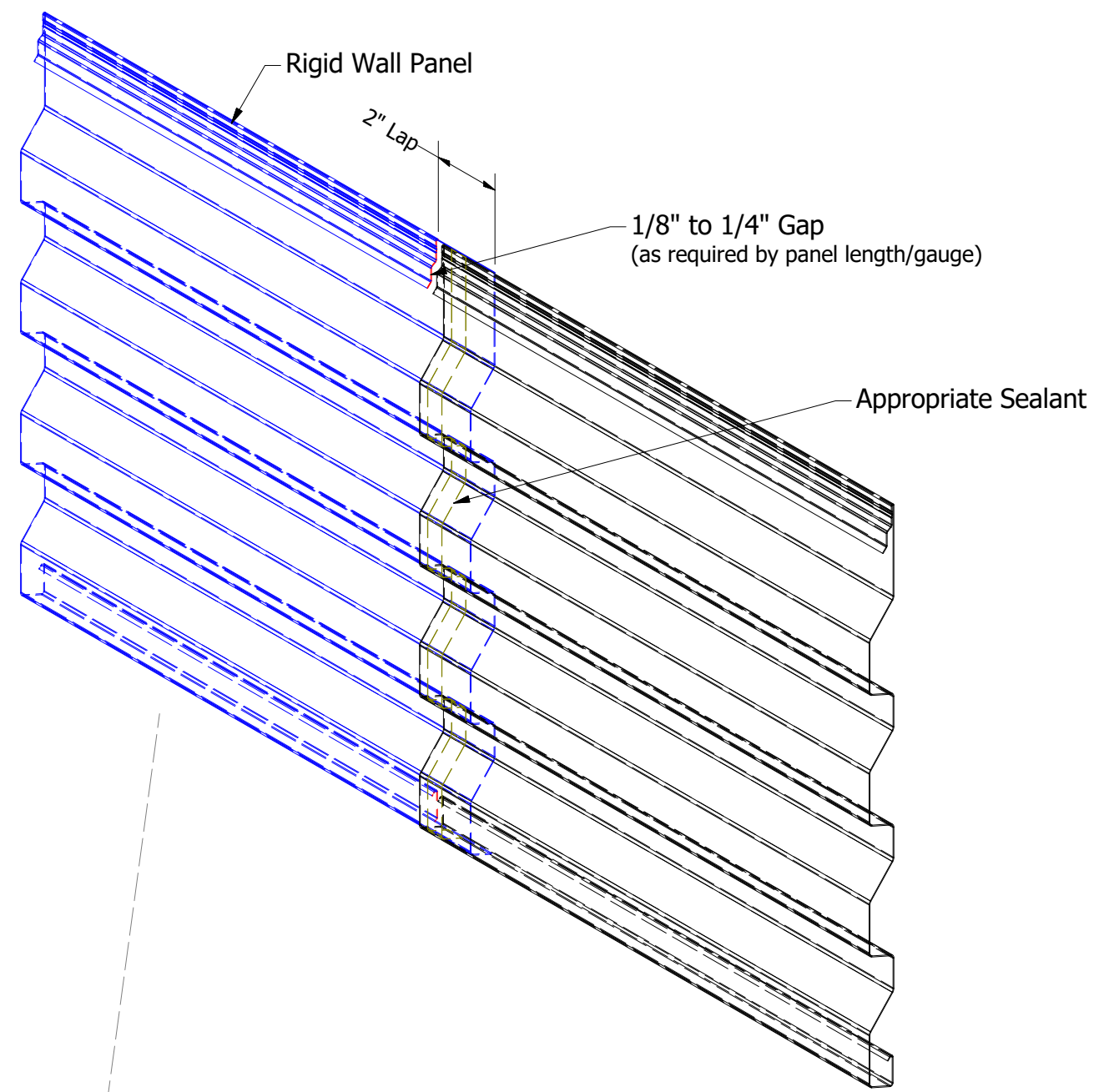


MCA602 - Outside Corner Post

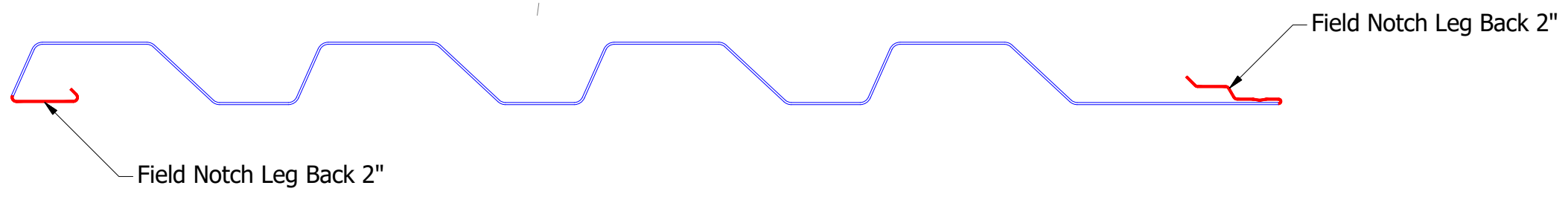
ATAS ATAS INTERNATIONAL, INC
 Allentown PA
 610-395-8445
 Mesa AZ
 480-558-7210

TITLE Rigid Wall Outside Corner Detail

REV. NO.	DATE	DESCRIPTION OF REVISION	BY	APP	DWG. NO.	DR MBP	DATE 7/5/2016
						APP DAS	DATE 7/25/16
					MATERIAL	SH. SIZE B	SCALE X:X



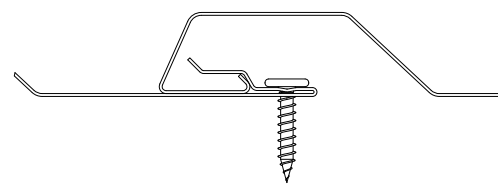
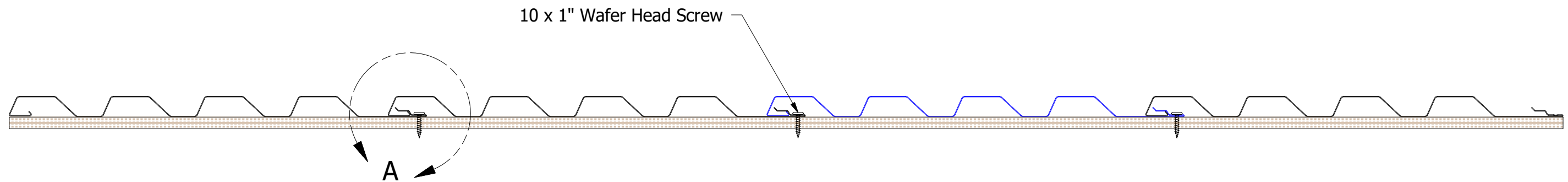
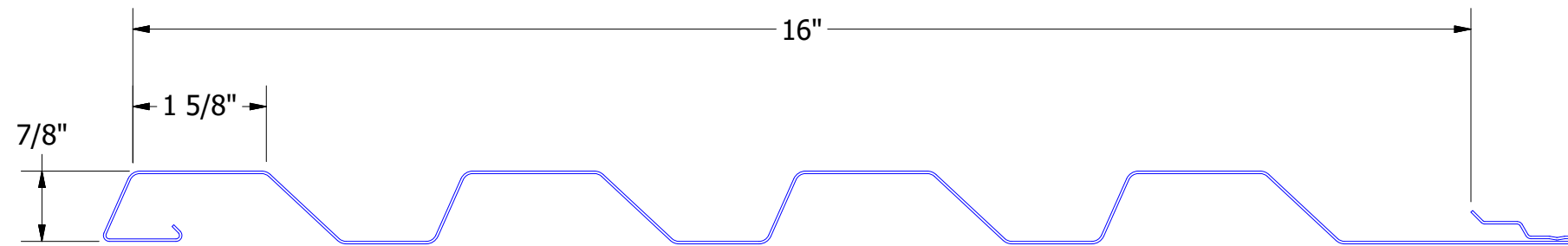
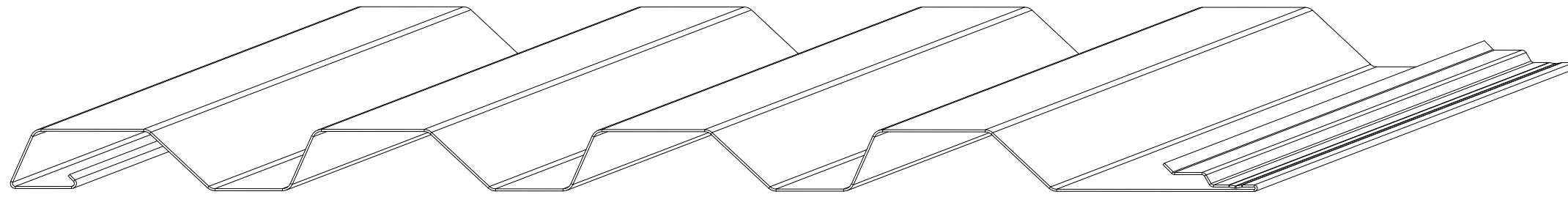
Note: do NOT fasten panels together to allow for thermal movement.




ATAS INTERNATIONAL, INC
 Allentown PA
 610-395-8445
 Mesa AZ
 480-558-7210

TITLE				Rigid Wall Panel Lap Detail	
DWG. NO.		DR	KRK	DATE	12/22/2016
		APP		DATE	
MATERIAL				SH. SIZE	B
				SCALE	X:X

REV. NO.	DATE	DESCRIPTION OF REVISION	BY	APP



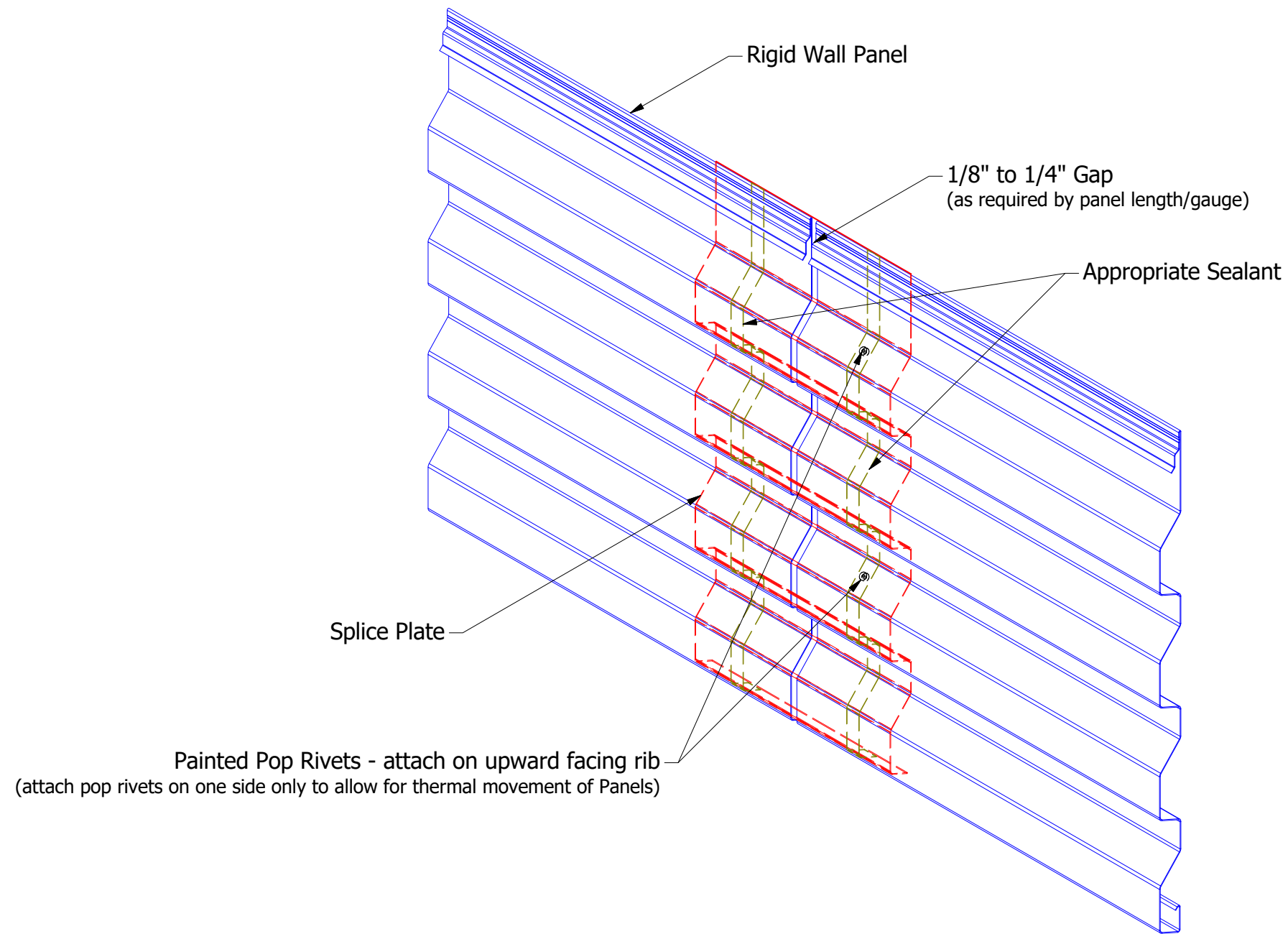
DETAIL A



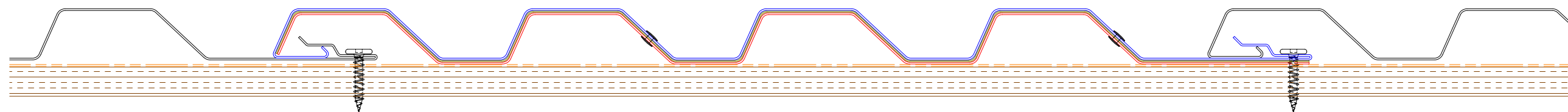
ATAS INTERNATIONAL, INC
 Allentown PA
 610-395-8445
 Mesa AZ
 480-558-7210

TITLE		Rigid Wall Panel Detail	
DWG. NO.	DR	DATE	7/5/2016
	DMR		
	APP	DAS	DATE 7/26/16
MATERIAL	SH. SIZE	B	SCALE X:X

REV. NO.	DATE	DESCRIPTION OF REVISION	BY	APP



Painted Pop Rivets - attach on upward facing rib
 (attach pop rivets on one side only to allow for thermal movement of Panels)

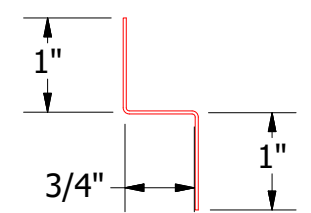
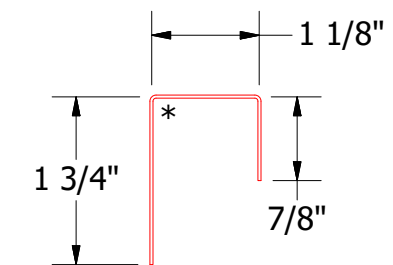
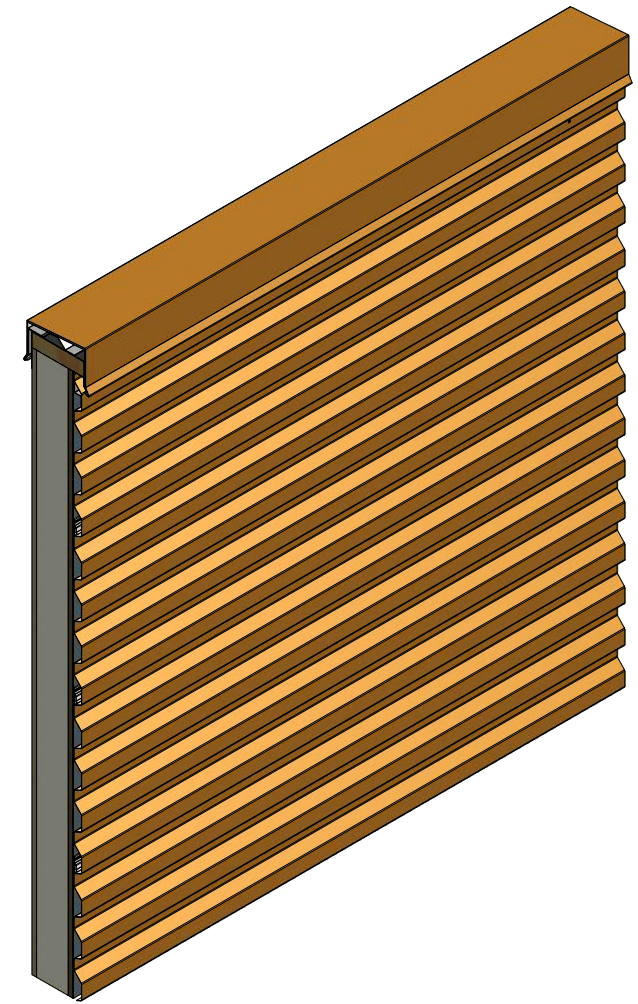
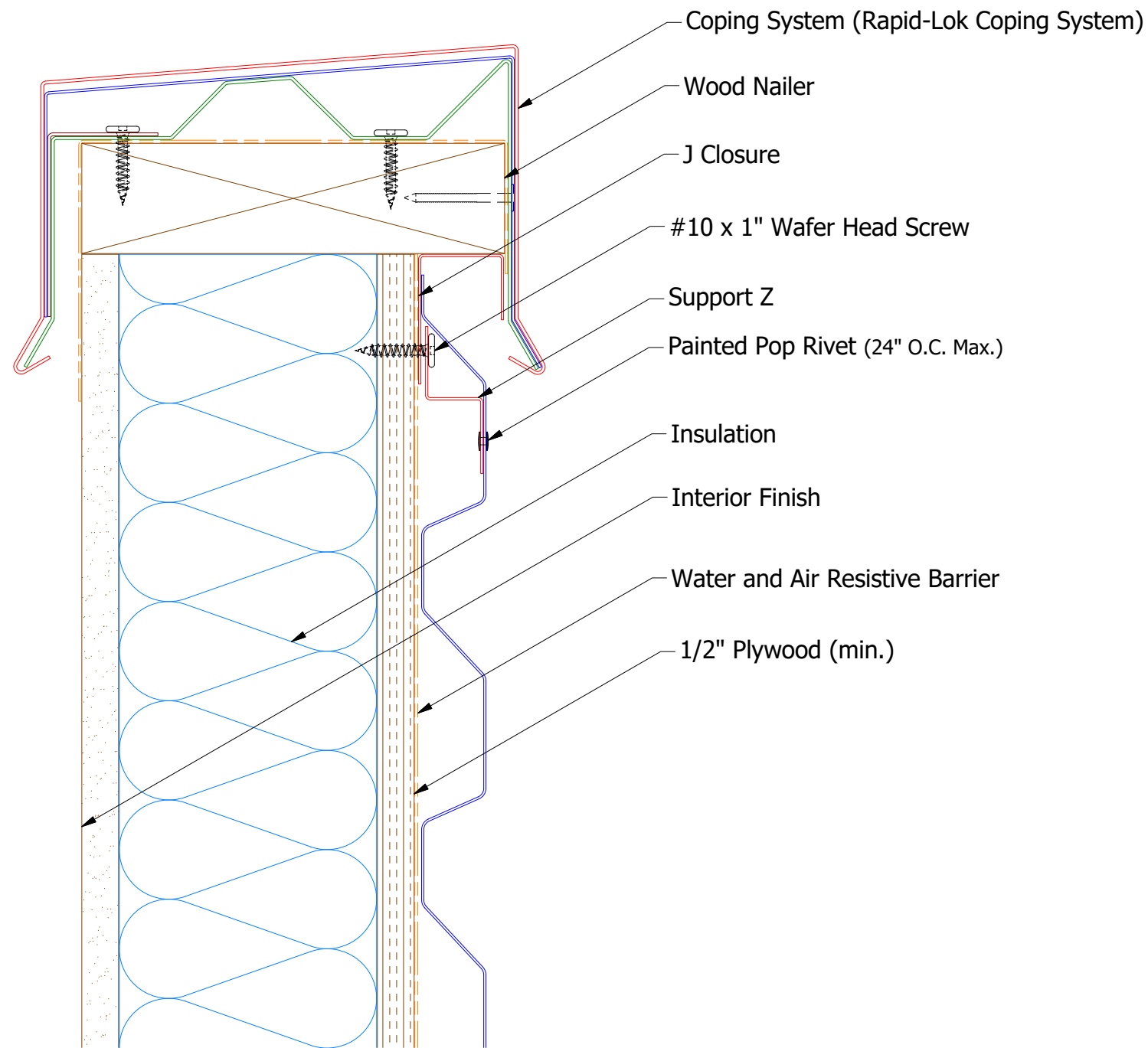


ATAS ATAS INTERNATIONAL, INC
 Allentown PA
 610-395-8445
 Mesa AZ
 480-558-7210

TITLE		Rigid Wall Panel Splice Detail	
DWG. NO.	DR	DATE	12/22/2016
	KRK	APP	DATE
MATERIAL	SH. SIZE	SCALE	X:X

REV. NO.	DATE	DESCRIPTION OF REVISION	BY	APP

Horizontal Panel



MCA270 - J Closure

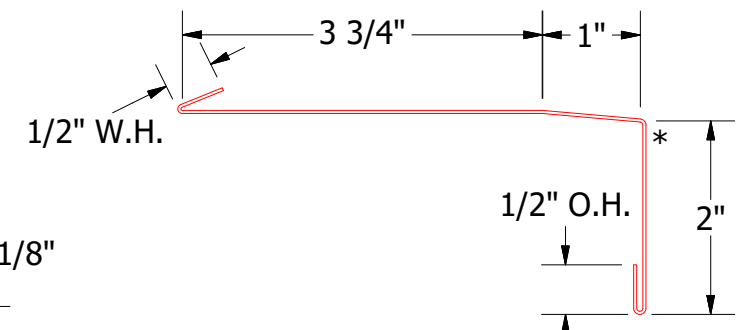
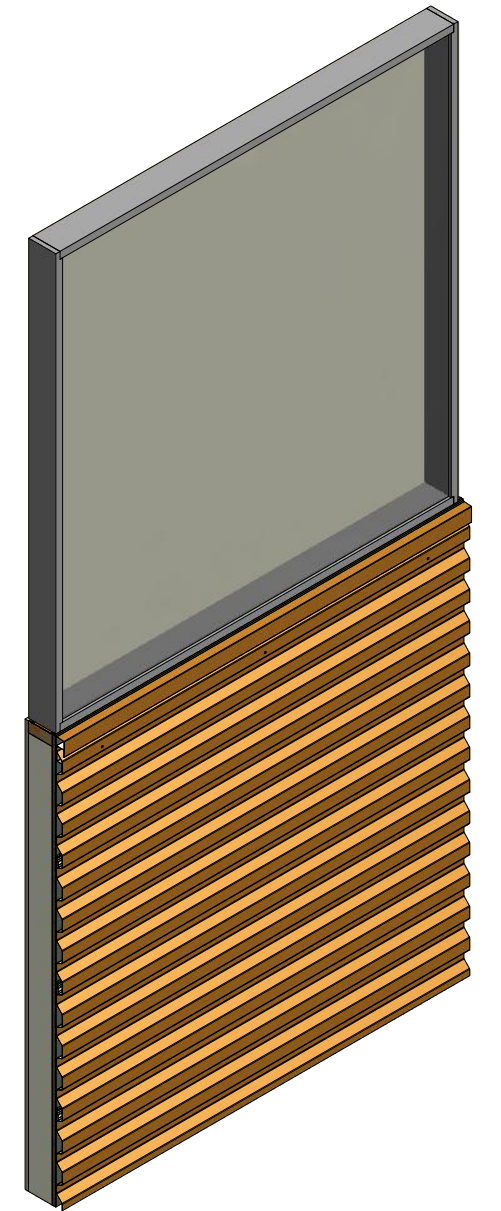
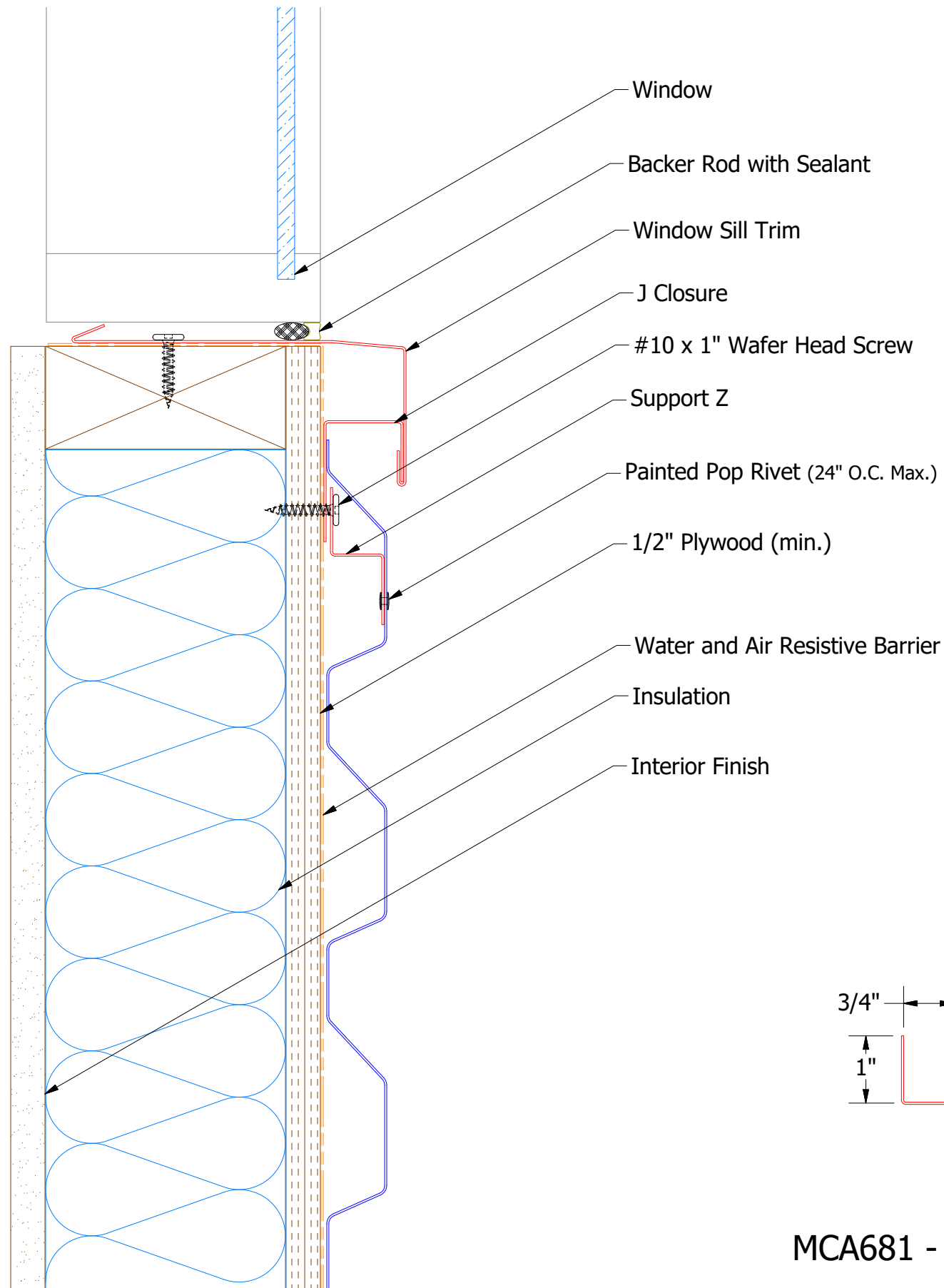
MCA681 - Support Z


ATAS INTERNATIONAL, INC
 Allentown PA
 610-395-8445
 Mesa AZ
 480-558-7210

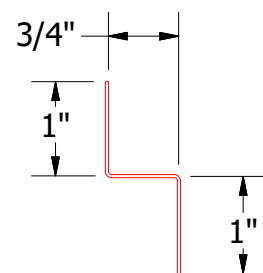
TITLE **Rigid Wall Top of Wall Detail**

REV. NO.	DATE	DESCRIPTION OF REVISION	BY	APP	DWG. NO.	DR	MBP	DATE	7/5/2016
						APP	DAS	DATE	7/25/16
						SH. SIZE	B	SCALE	X:X

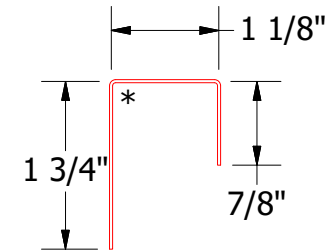
Horizontal Panel



MCA670 - Window Sill Trim



MCA681 - Support Z

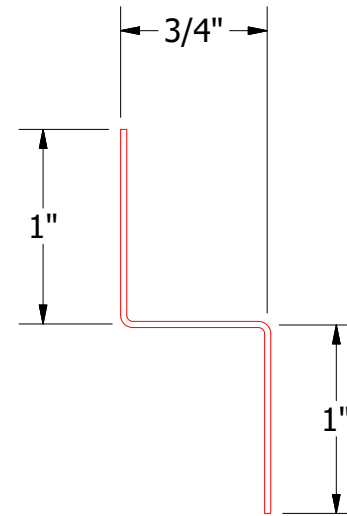
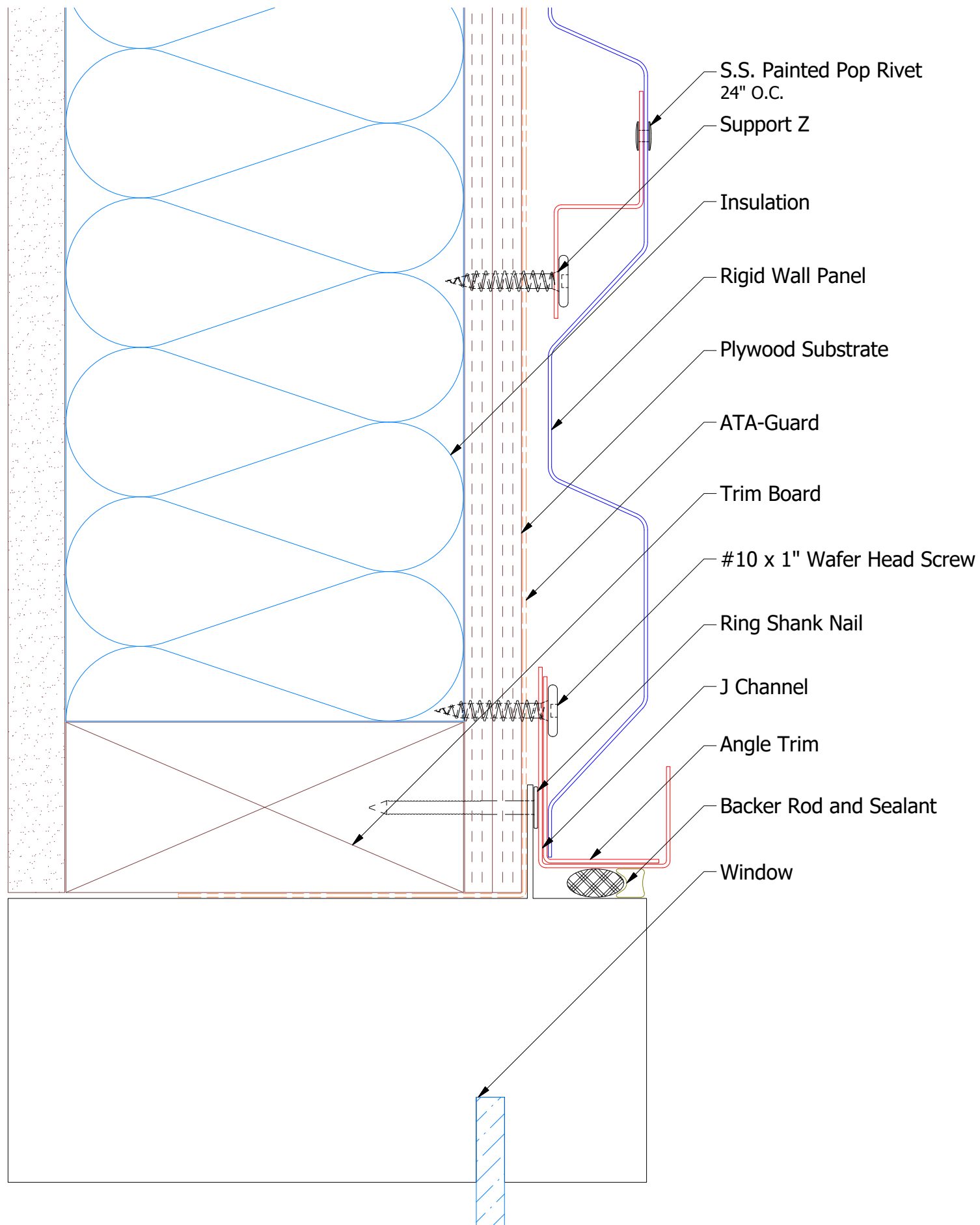


MCA270 - J Closure

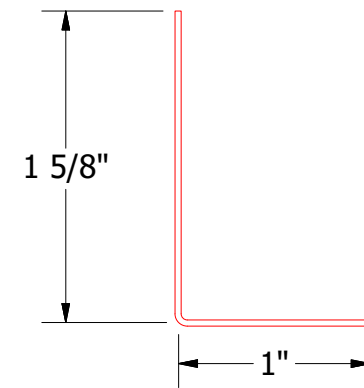
ATAS ATAS INTERNATIONAL, INC
 Allentown PA
 610-395-8445
 Mesa AZ
 480-558-7210

TITLE		Rigid Wall Window Sill Detail	
DWG. NO.	DR	DATE	7/5/2016
	MBP		
MATERIAL	APP	DATE	7/25/16
	DAS		
REV. NO.	BY	SCALE	X:X
	APP	B	

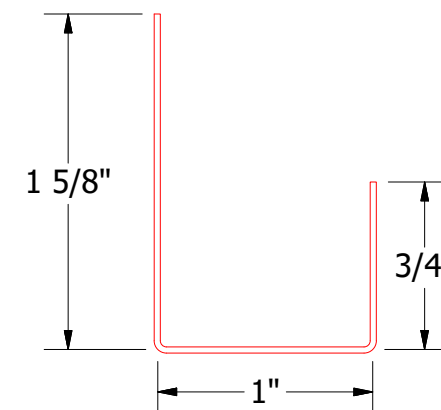
REV. NO.	DATE	DESCRIPTION OF REVISION	BY	APP



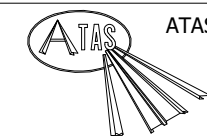
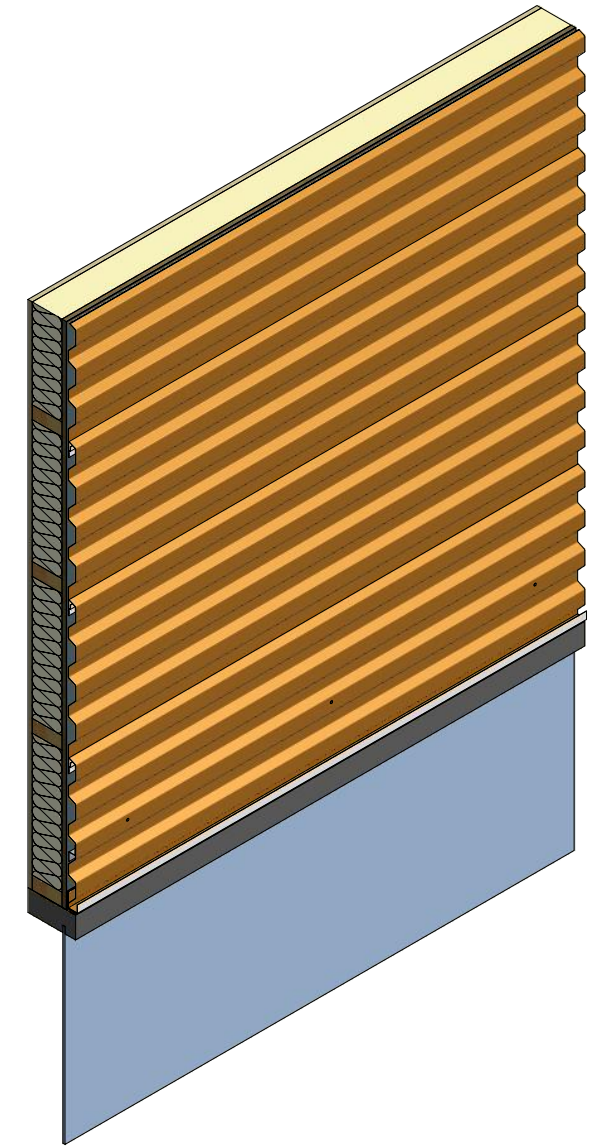
MCA681 - Support Z



MCA680 - Angle Trim



MCA118 - J Channel



ATAS INTERNATIONAL, INC
 Allentown PA
 610-395-8445
 Mesa AZ
 480-558-7210

REV. NO.		DATE	DESCRIPTION OF REVISION	BY	APP	TITLE	
DWG. NO.		DR	JAC	DATE	8/1/2018	MATERIAL	
SH. SIZE		B	SCALE	X:X			