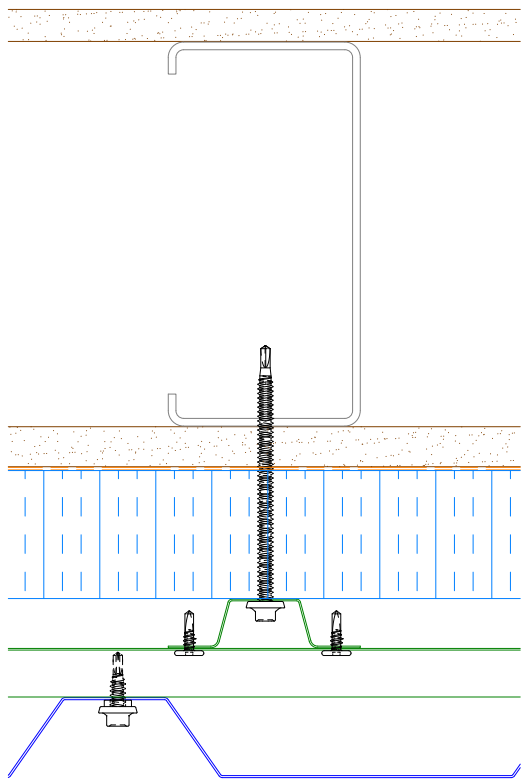
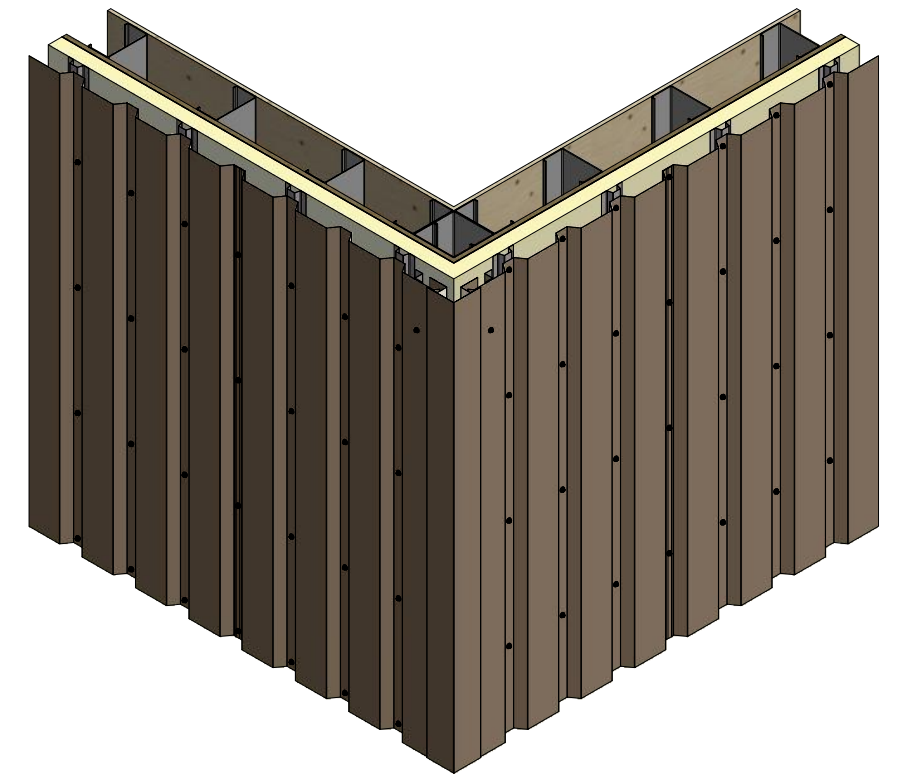
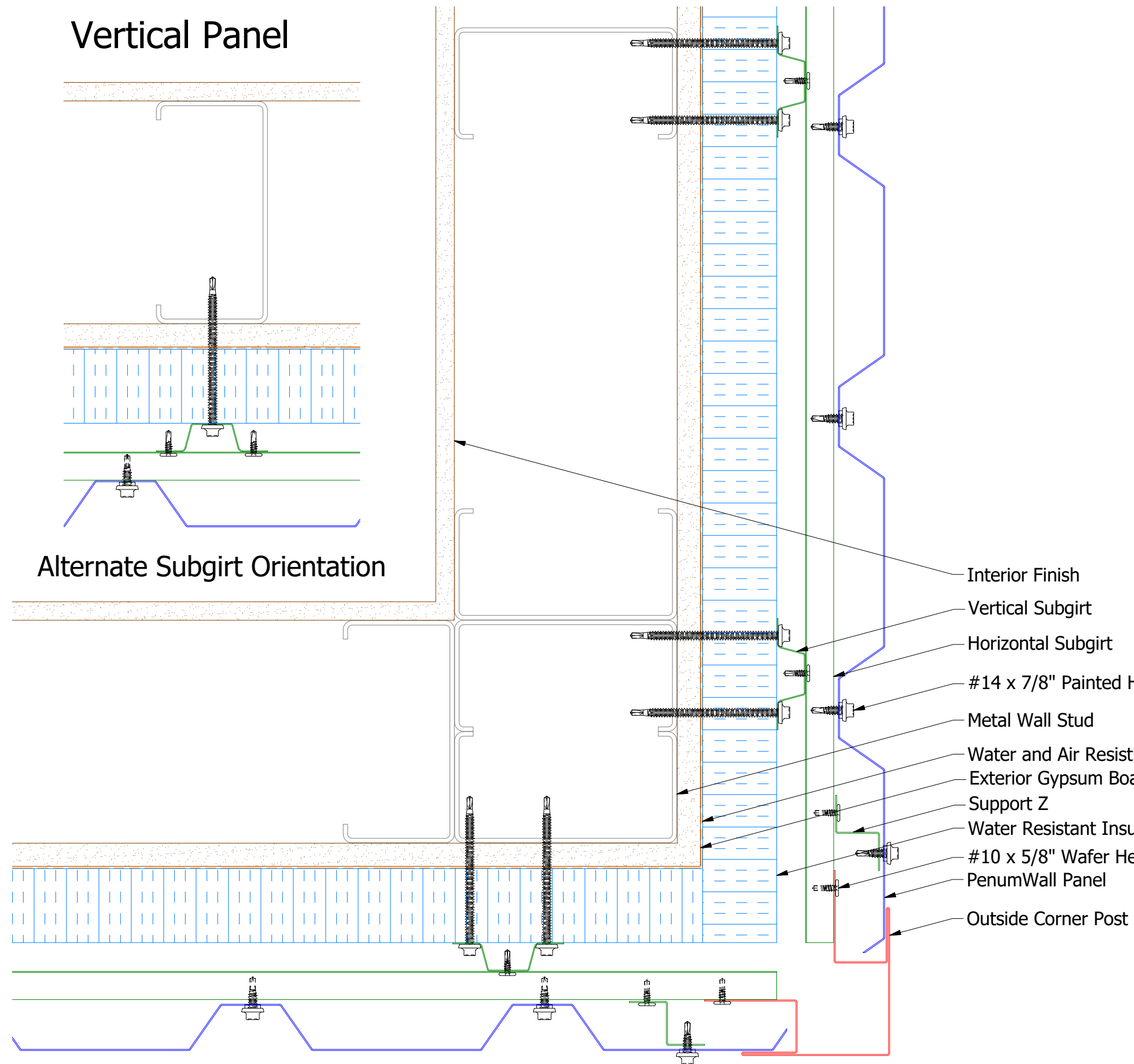


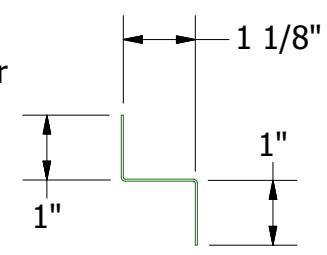
# Vertical Panel



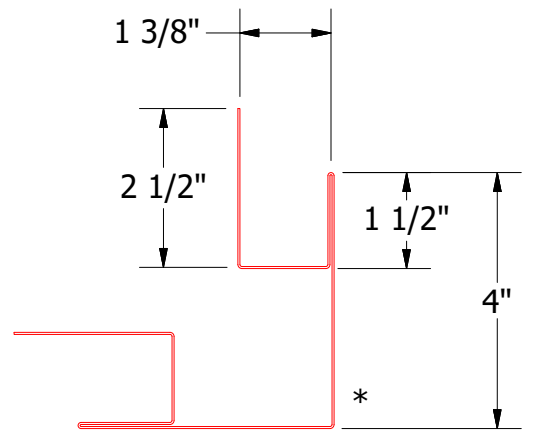
## Alternate Subgirt Orientation



- Interior Finish
- Vertical Subgirt
- Horizontal Subgirt
- #14 x 7/8" Painted Hex Washer Head Fastener
- Metal Wall Stud
- Water and Air Resistive Barrier
- Exterior Gypsum Board
- Support Z
- Water Resistant Insulation
- #10 x 5/8" Wafer Head Fastener
- PenumWall Panel
- Outside Corner Post



**BPA681 - Support Z**  
(if conditions apply)



**BPA602-Outside Corner Post**

**Note:** \* denotes color side.

REV. NO.	DATE	DESCRIPTION OF REVISION	BY	APP
1	4/20/2021	Added Support Z Trim and color side note.	DMR	

**ATAS INTERNATIONAL, INC**  
 Allentown PA  
 610-395-8445  
 Mesa AZ  
 480-558-7210

TITLE PenumWall Open Outside Corner Detail			
DWG. NO.	DR	DATE	
	DMR	4/21/2017	
MATERIAL	APP	DATE	
	SH. SIZE	B	SCALE X:X