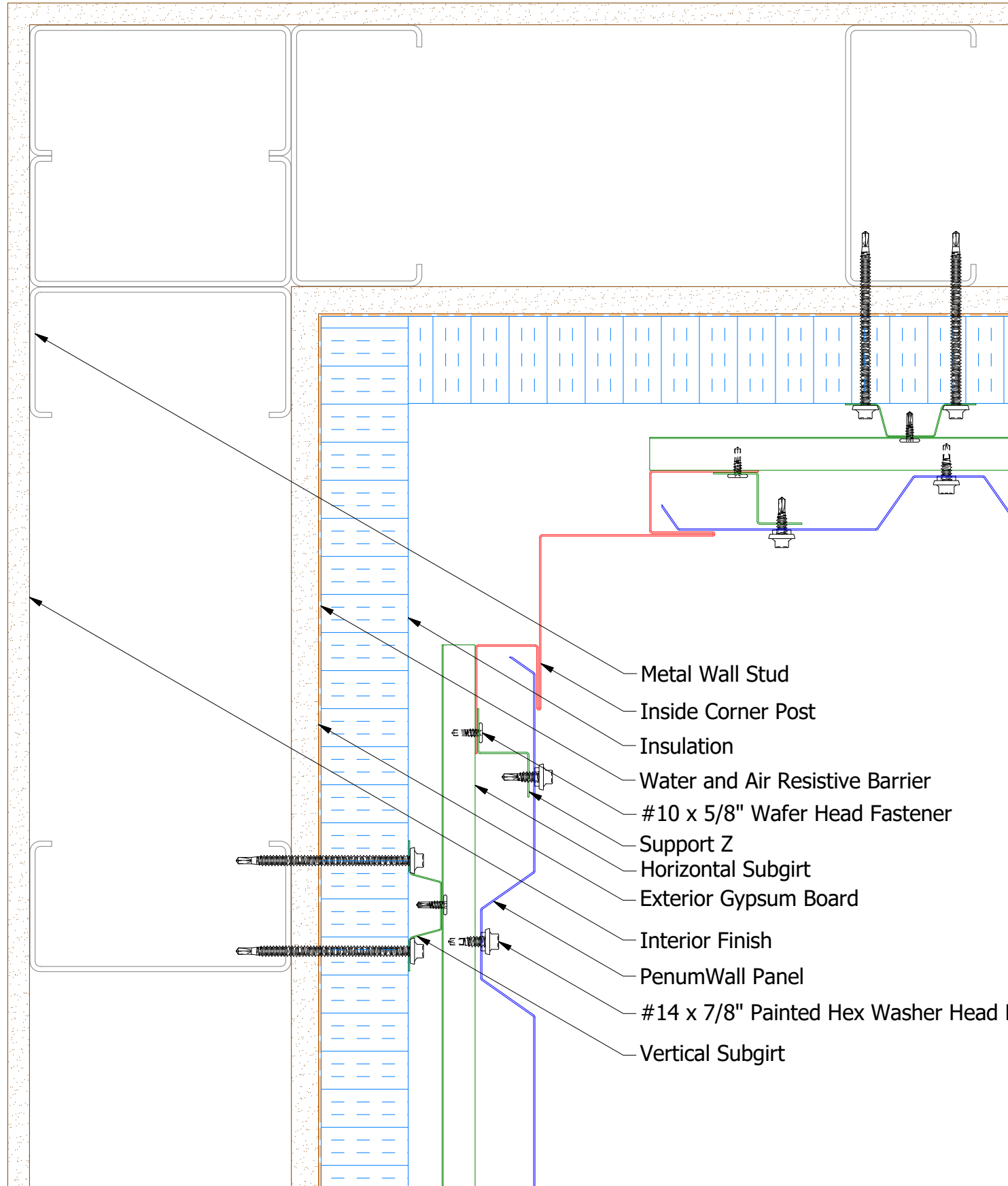
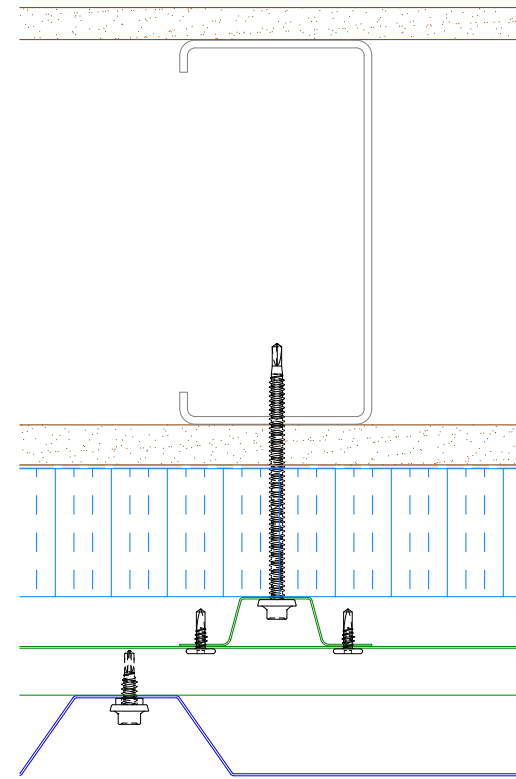


# Vertical Panel

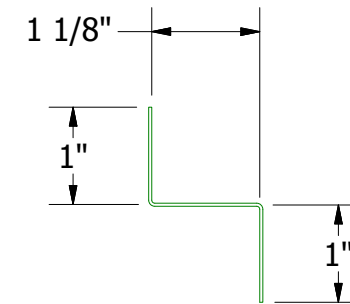
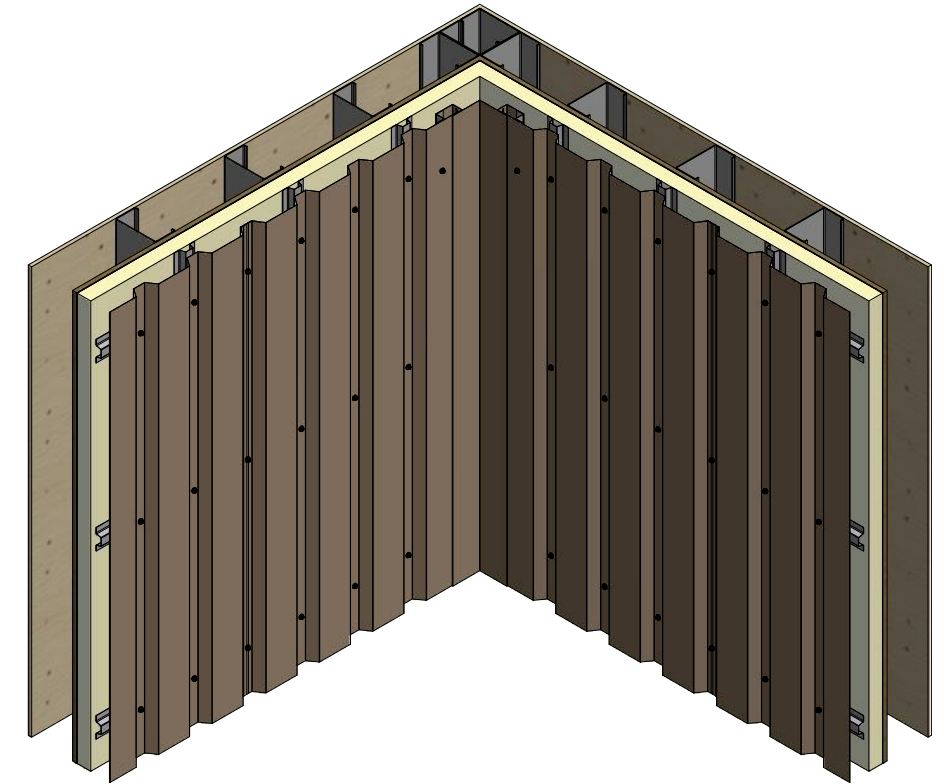


- Metal Wall Stud
- Inside Corner Post
- Insulation
- Water and Air Resistive Barrier
- #10 x 5/8" Wafer Head Fastener
- Support Z
- Horizontal Subgirt
- Exterior Gypsum Board
- Interior Finish
- PenumWall Panel
- #14 x 7/8" Painted Hex Washer Head Fastener with Washer
- Vertical Subgirt

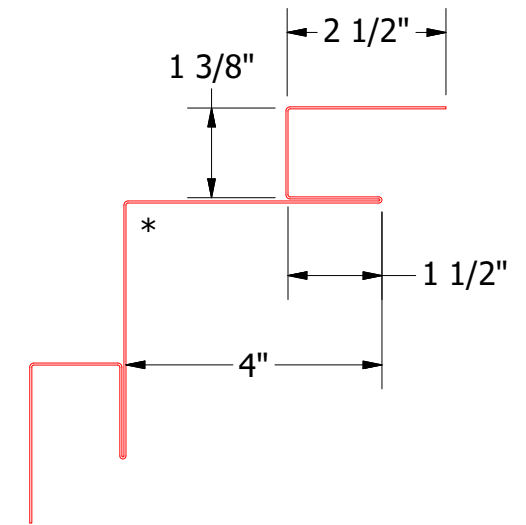
**Note:** \* denotes color side.




Alternate Subgirt Orientation



**BPA681 - Support Z**  
(if conditions apply)



**BPA601-Inside Corner Post**

				 <b>ATAS INTERNATIONAL, INC</b> Allentown PA 610-395-8445 Mesa AZ 480-558-7210	
				TITLE <b>PenumWall Open Inside Corner Detail</b>	
				DWG. NO.	DR DMR DATE 4/20/2017
1	4/16/2021	Added Support Z Trim and color side note.	DMR	APP	DATE
REV. NO.	DATE	DESCRIPTION OF REVISION	BY	APP	SH. SIZE B SCALE X:X