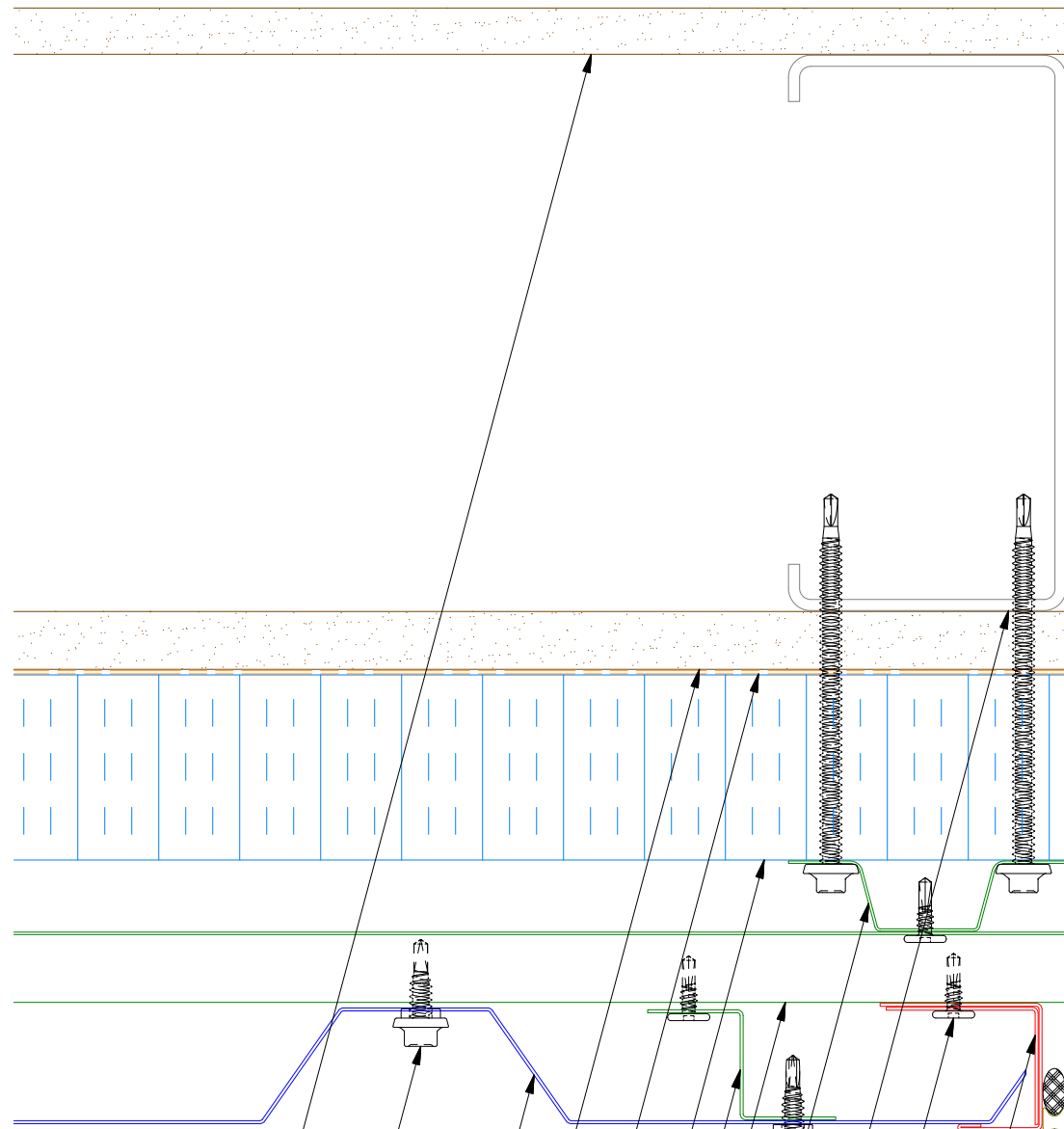
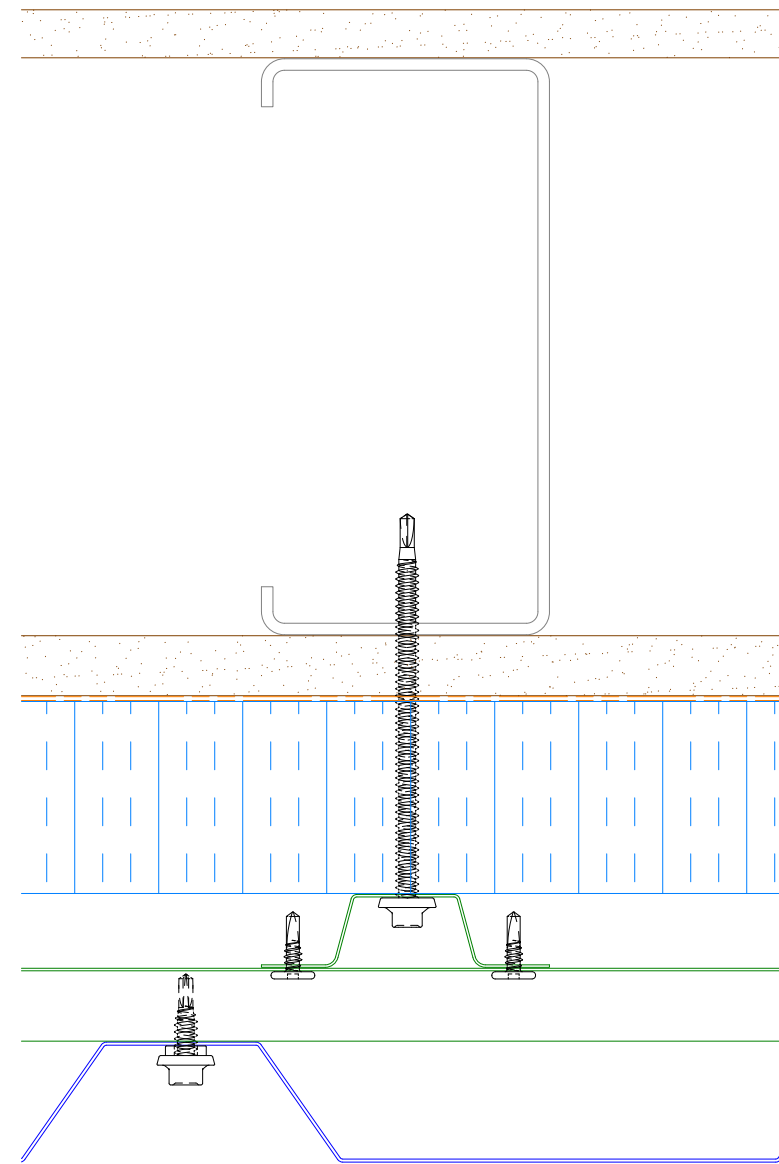


# Vertical Panel

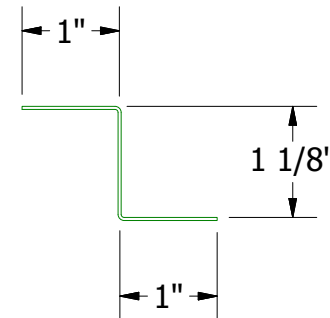


- Interior Finish
- #14 x 7/8" Painted Hex Washer Head Fastener with Washer
- PenumWall Panel
- Exterior Gypsum Board
- Water and Air Resistant Barrier
- Water Resistant Insulation
- Support Z
- Horizontal Subgirt
- Vertical Subgirt
- Metal Wall Stud
- #10 x 5/8" Wafer Head Fastener
- J Channel
- Angle Trim
- Backer Rod and Sealant

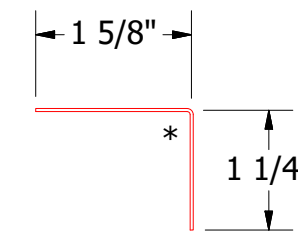
**Note:** \* denotes color side.



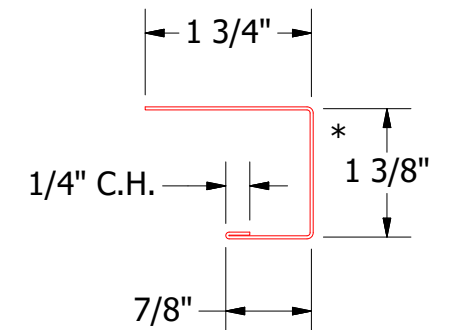
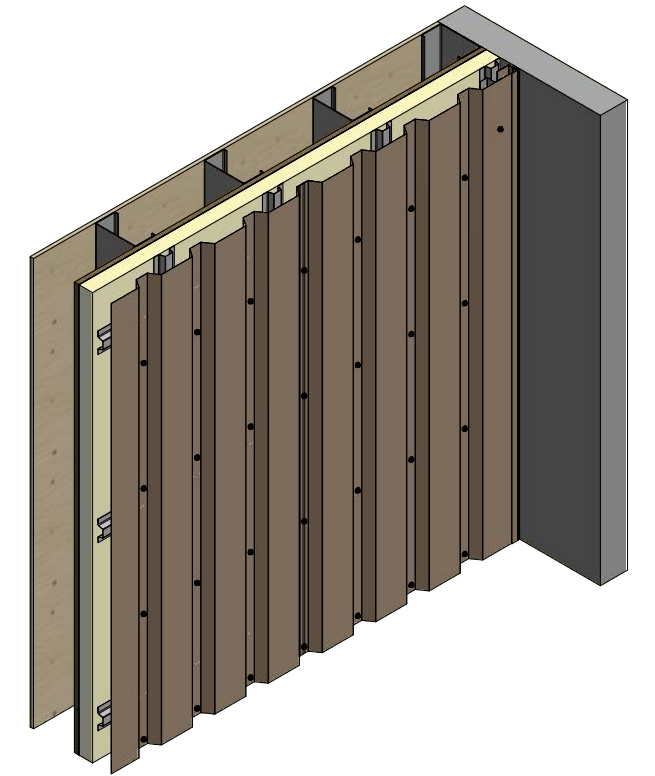
Alternate Subgirt Orientation



BPA681 - Support Z  
(if conditions apply)



BPA280-Angle Trim



BPA138-J Channel



ATAS INTERNATIONAL, INC  
Allentown PA  
610-395-8445  
Mesa AZ  
480-558-7210

TITLE		PenumWall Open Endwall Detail	
DWG. NO.	DR	DMR	DATE
1	4/16/2021	DMR	4/18/2017
REV. NO.	DATE	DESCRIPTION OF REVISION	BY APP
1	4/16/2021	Added Support Z Trim and color side note.	DMR
MATERIAL		SH. SIZE	SCALE
		B	X:X

REV. NO.	DATE	DESCRIPTION OF REVISION	BY	APP
1	4/16/2021	Added Support Z Trim and color side note.	DMR	