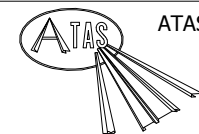
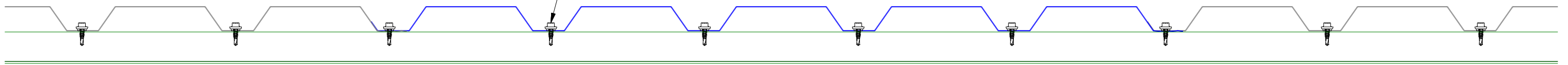


#14 x 7/8" Painted Hex Washer Head Fastener with Washer

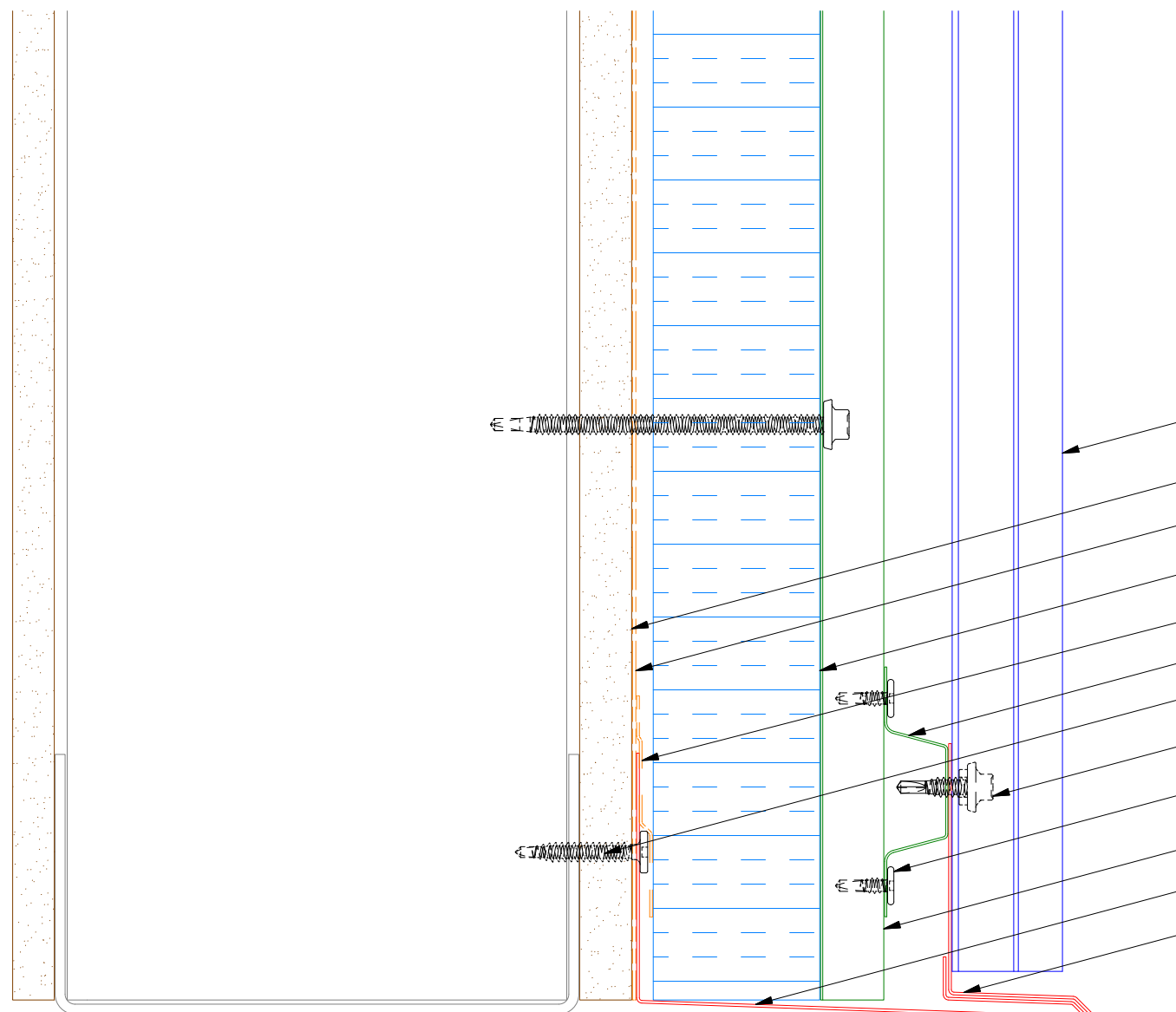


ATAS INTERNATIONAL, INC  
 Allentown PA  
 610-395-8445  
 Mesa AZ  
 480-558-7210

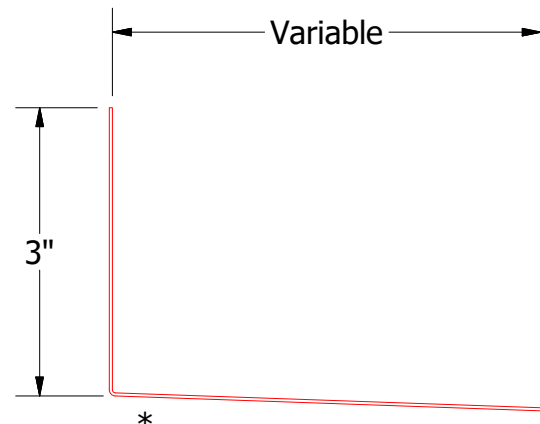
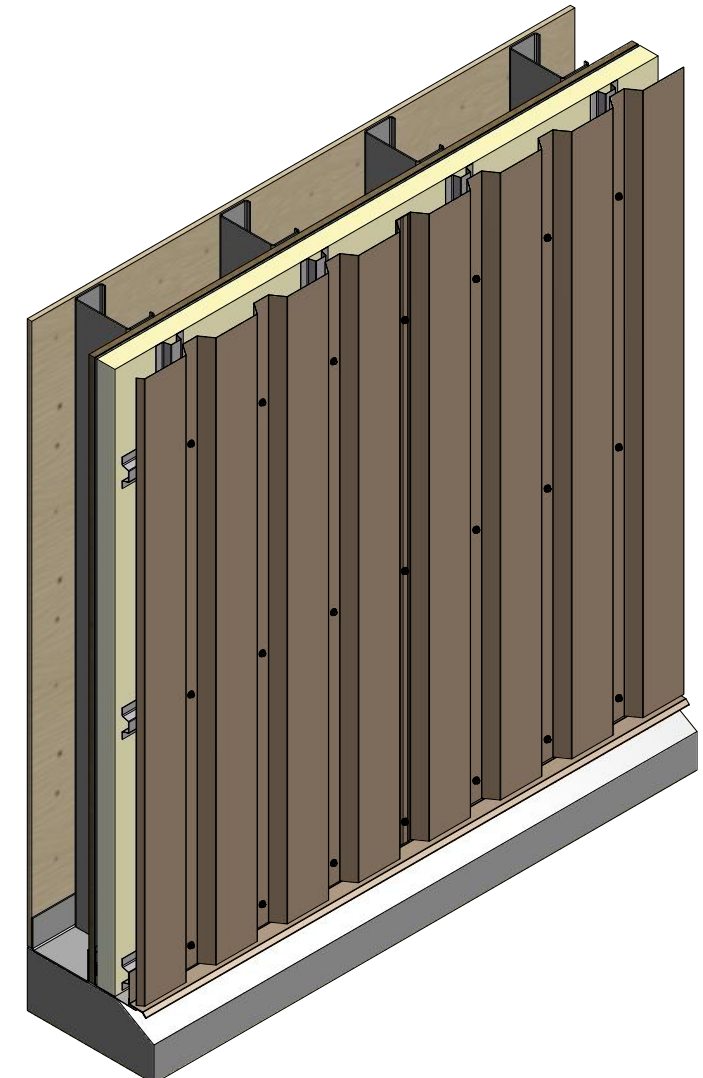
TITLE  
**PenumWall Open Panel Profile Detail**

REV. NO.	DATE	DESCRIPTION OF REVISION	BY	APP	DWG. NO.	DR	DATE
						DMR	4/24/2017
					MATERIAL	APP	DATE
					SH. SIZE	B	SCALE
							X:X

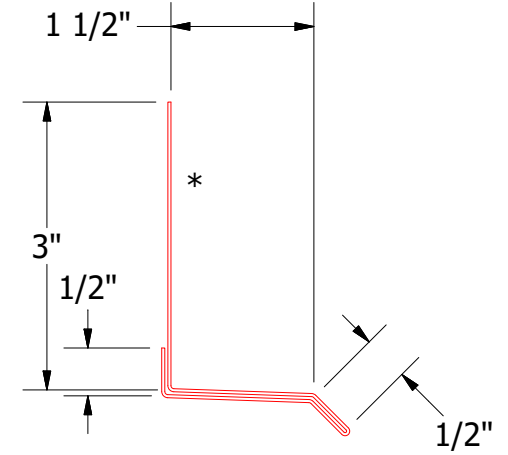
# Vertical Panel



- PenumWall Panel
- Exterior Gypsum Board
- Water and Air Resistive Barrier
- Water Resistant Insulation
- Membrane Strip (by others)
- Horizontal Subgirt
- Flashing Fastener (by others)
- #14 x 7/8" Painted Hex Washer Head Fastener with Washer
- #10 x 5/8" Wafer Head Fastener
- Vertical Subgirt
- Flashing (by others)
- Base Trim



**Flashing**  
(Field Fabricated From Color Matched Flat Stock)



**BPA661-Base Trim**

Note: \* denotes color side.

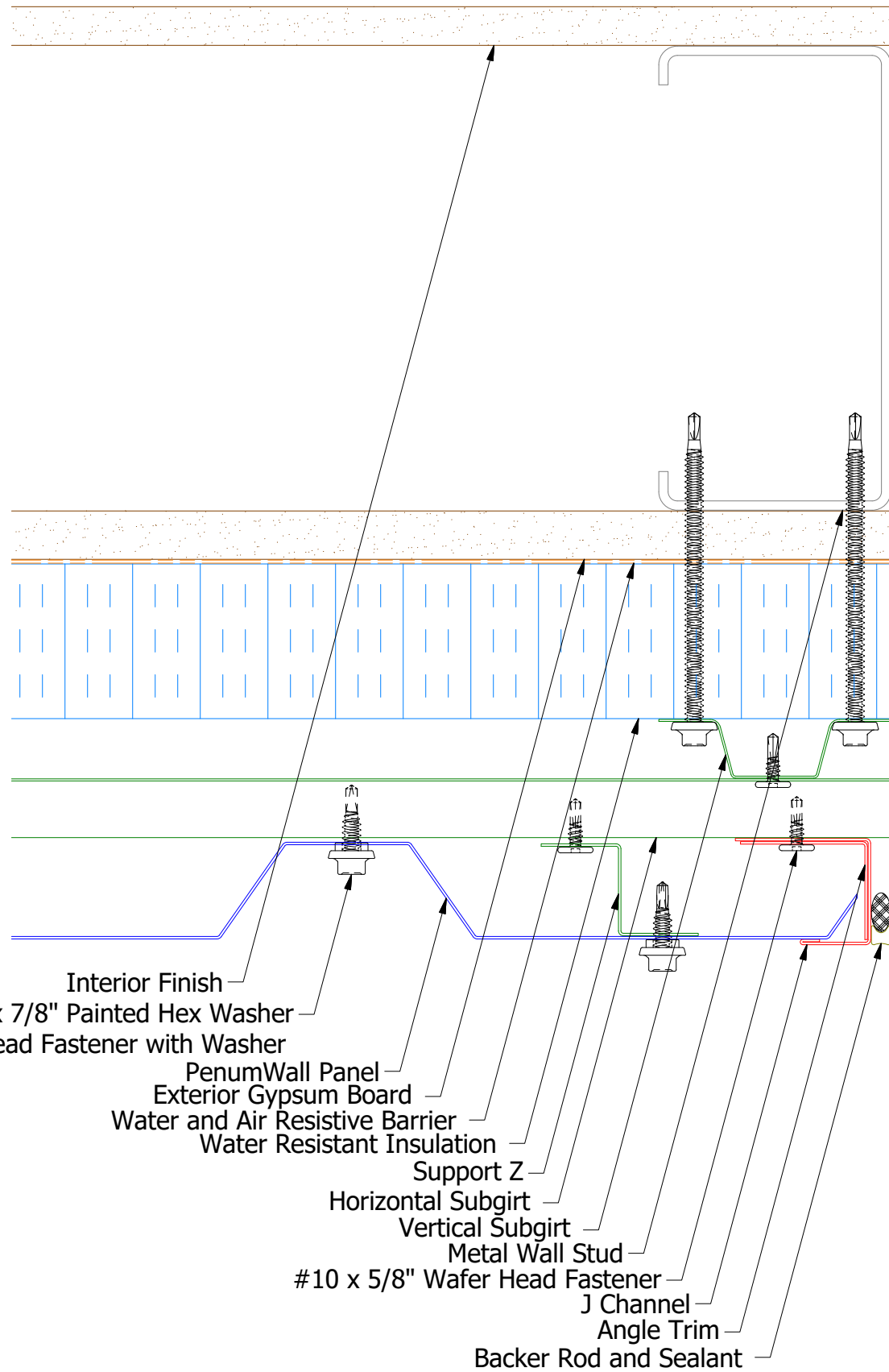
REV. NO.	DATE	DESCRIPTION OF REVISION	BY	APP
01	4/12/2021	Added color side note.	KRK	

**ATAS INTERNATIONAL, INC**  
Allentown PA  
610-395-8445  
Mesa AZ  
480-558-7210

TITLE: **PenumWall Open Base Detail**

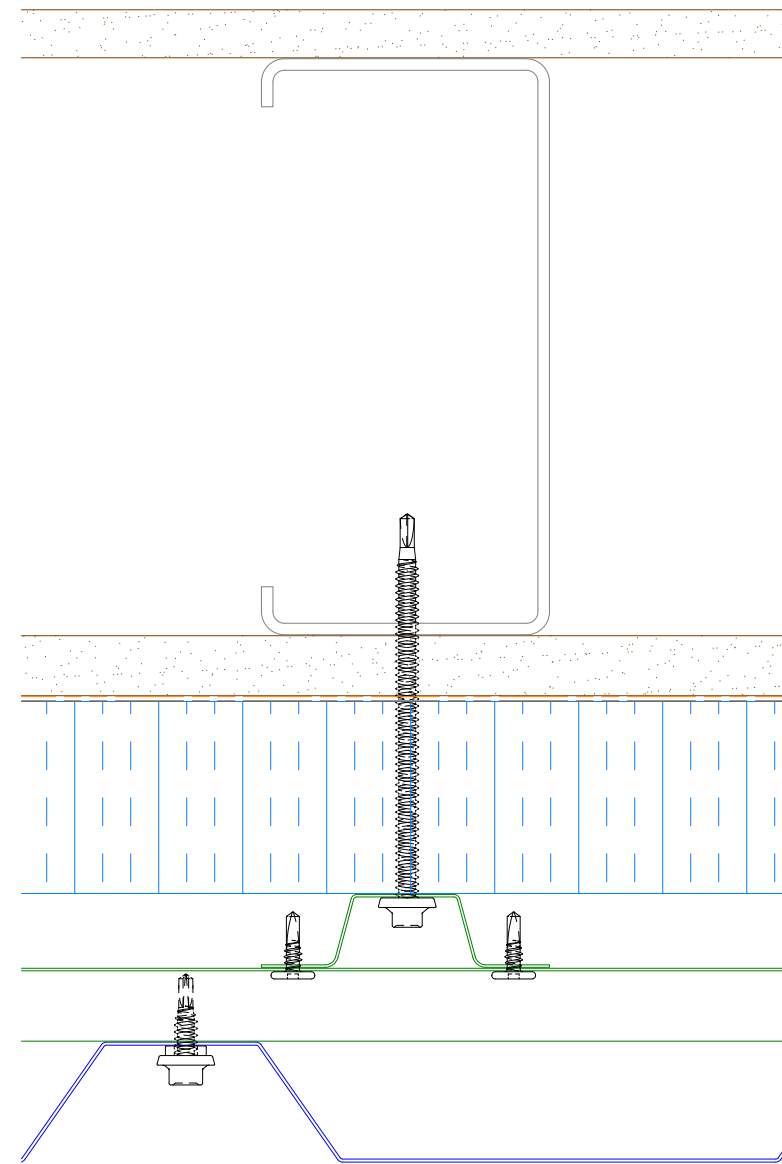
DWG. NO.	DR	DATE
	DMR	4/18/2017
MATERIAL	APP	DATE
	SH. SIZE	SCALE
	B	X:X

# Vertical Panel

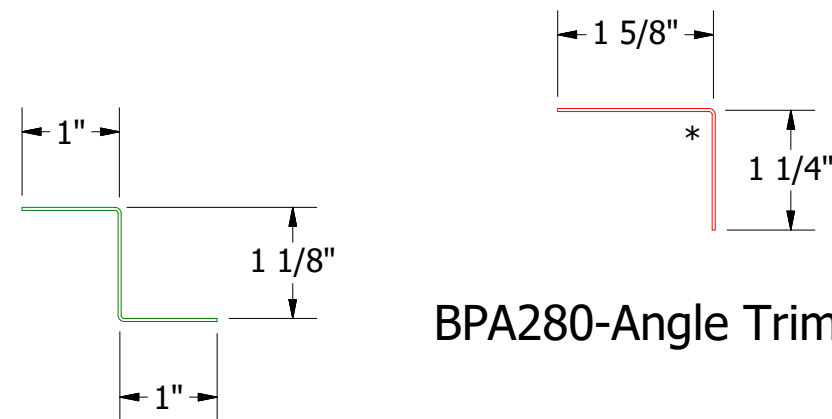


- Interior Finish
- #14 x 7/8" Painted Hex Washer Head Fastener with Washer
- PenumWall Panel
- Exterior Gypsum Board
- Water and Air Resistive Barrier
- Water Resistant Insulation
- Support Z
- Horizontal Subgirt
- Vertical Subgirt
- Metal Wall Stud
- #10 x 5/8" Wafer Head Fastener
- J Channel
- Angle Trim
- Backer Rod and Sealant

**Note:** \* denotes color side.

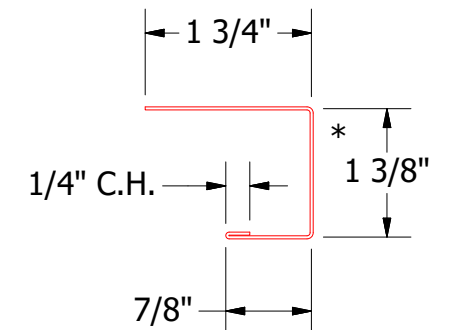
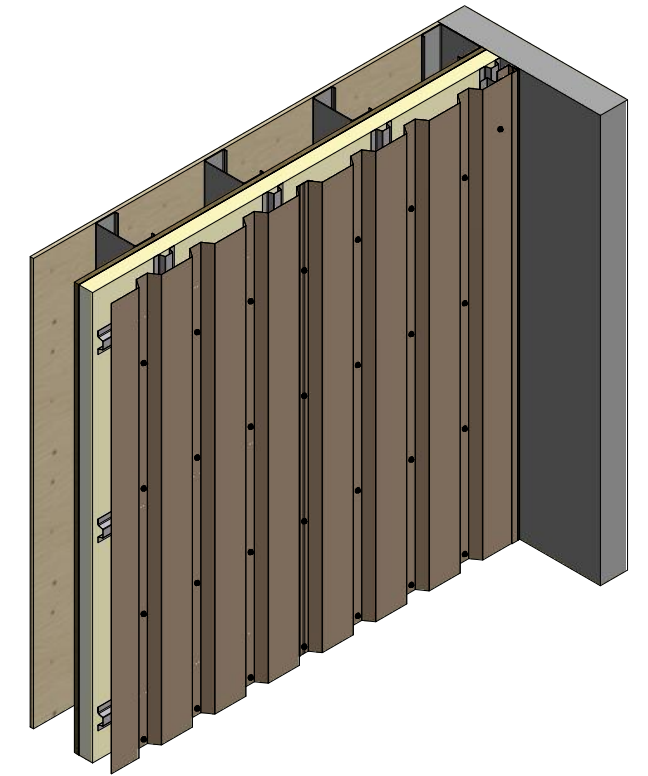


Alternate Subgirt Orientation



BPA280-Angle Trim

BPA681 - Support Z  
(if conditions apply)



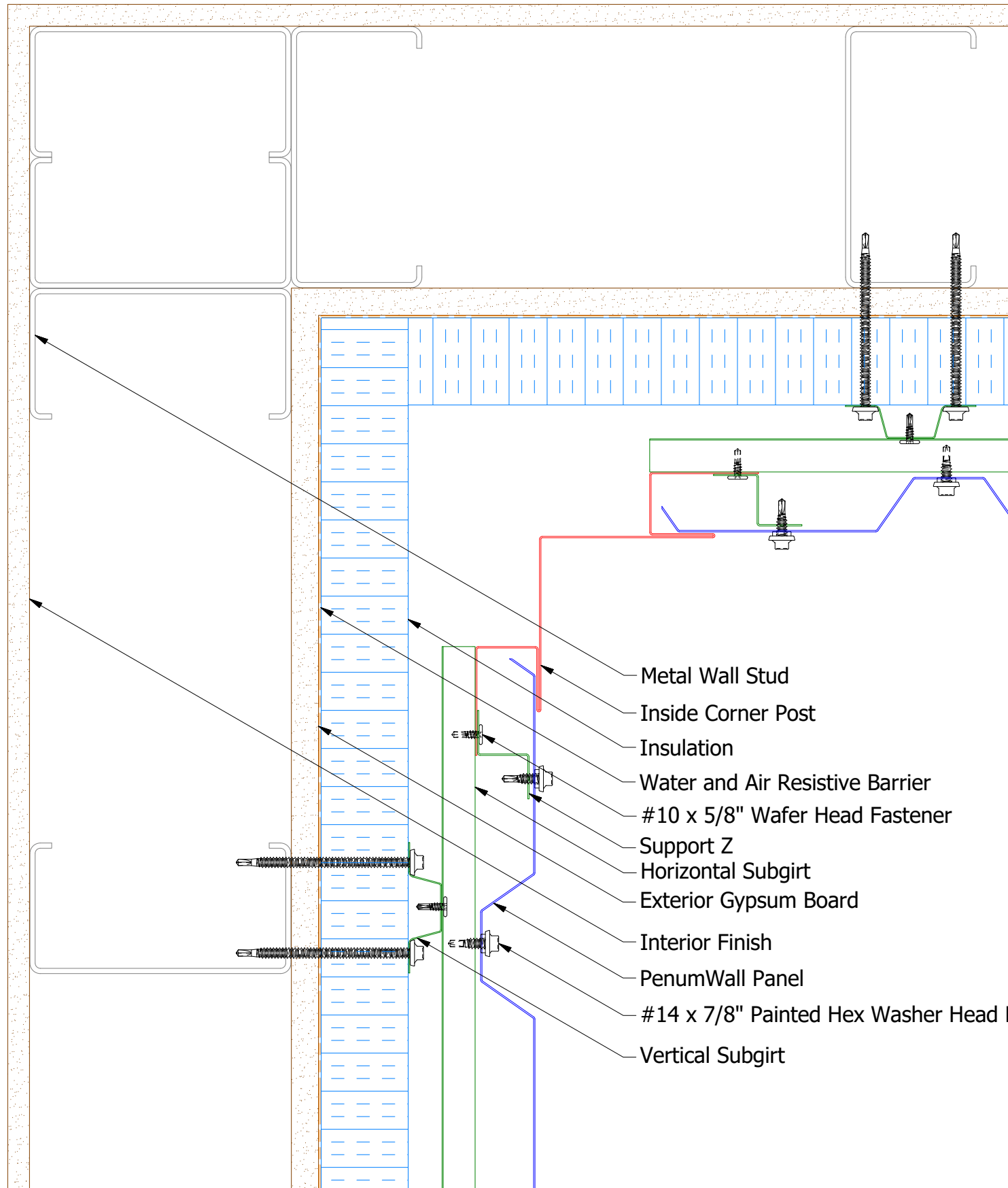
BPA138-J Channel

**ATAS** ATAS INTERNATIONAL, INC  
 Allentown PA  
 610-395-8445  
 Mesa AZ  
 480-558-7210

TITLE		PenumWall Open Endwall Detail	
DWG. NO.	DR	DMR	DATE
1	4/16/2021	DMR	4/18/2017
REV. NO.	DATE	DESCRIPTION OF REVISION	BY APP
MATERIAL		SH. SIZE	SCALE
		B	X:X

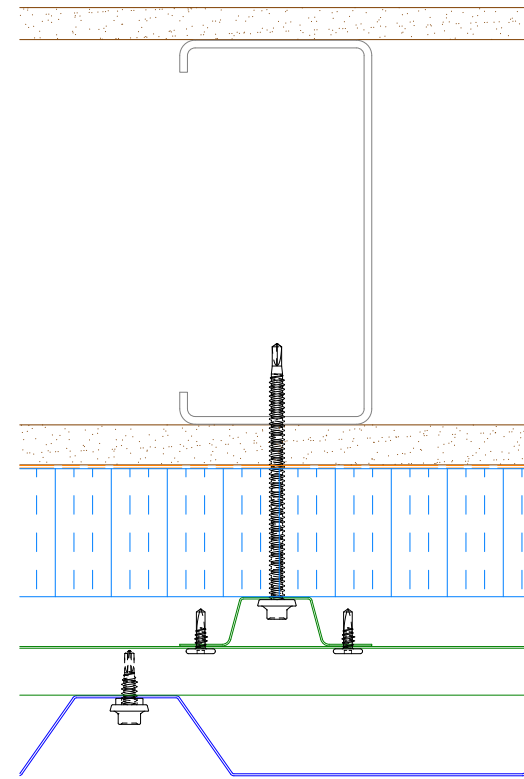
REV. NO.		DATE		DESCRIPTION OF REVISION		BY APP	
1	4/16/2021	Added Support Z Trim and color side note.		DMR			

# Vertical Panel

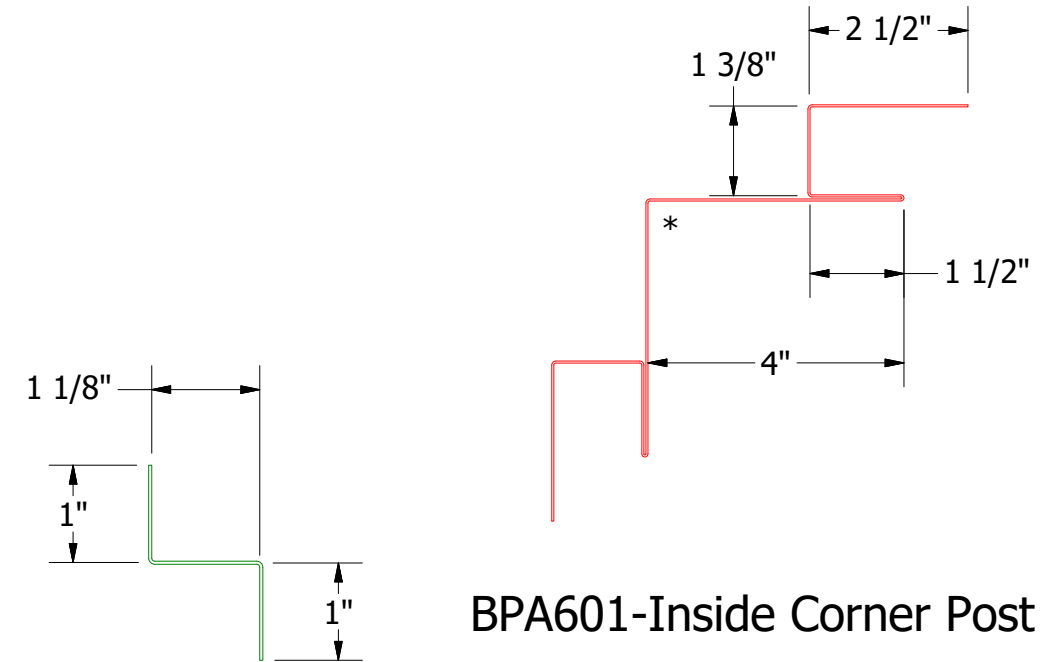
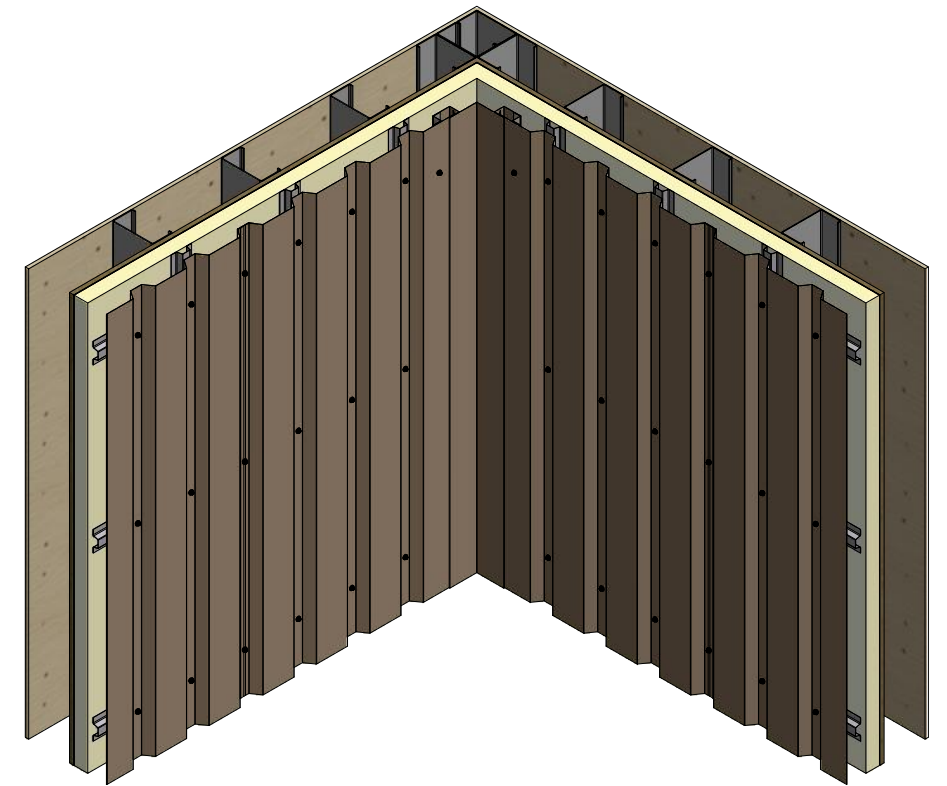


- Metal Wall Stud
- Inside Corner Post
- Insulation
- Water and Air Resistive Barrier
- #10 x 5/8" Wafer Head Fastener
- Support Z
- Horizontal Subgirt
- Exterior Gypsum Board
- Interior Finish
- PenumWall Panel
- #14 x 7/8" Painted Hex Washer Head Fastener with Washer
- Vertical Subgirt

**Note:** \* denotes color side.



Alternate Subgirt Orientation



**BPA681 - Support Z**  
(if conditions apply)

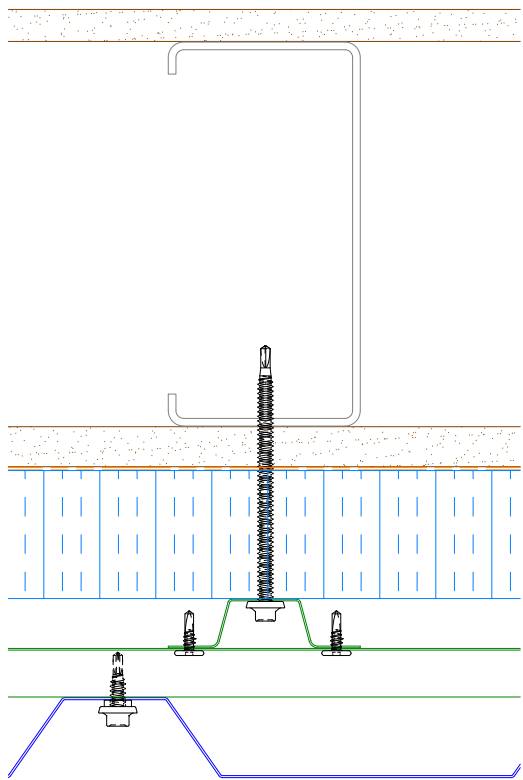
**BPA601-Inside Corner Post**

**ATAS** ATAS INTERNATIONAL, INC  
Allentown PA  
610-395-8445  
Mesa AZ  
480-558-7210

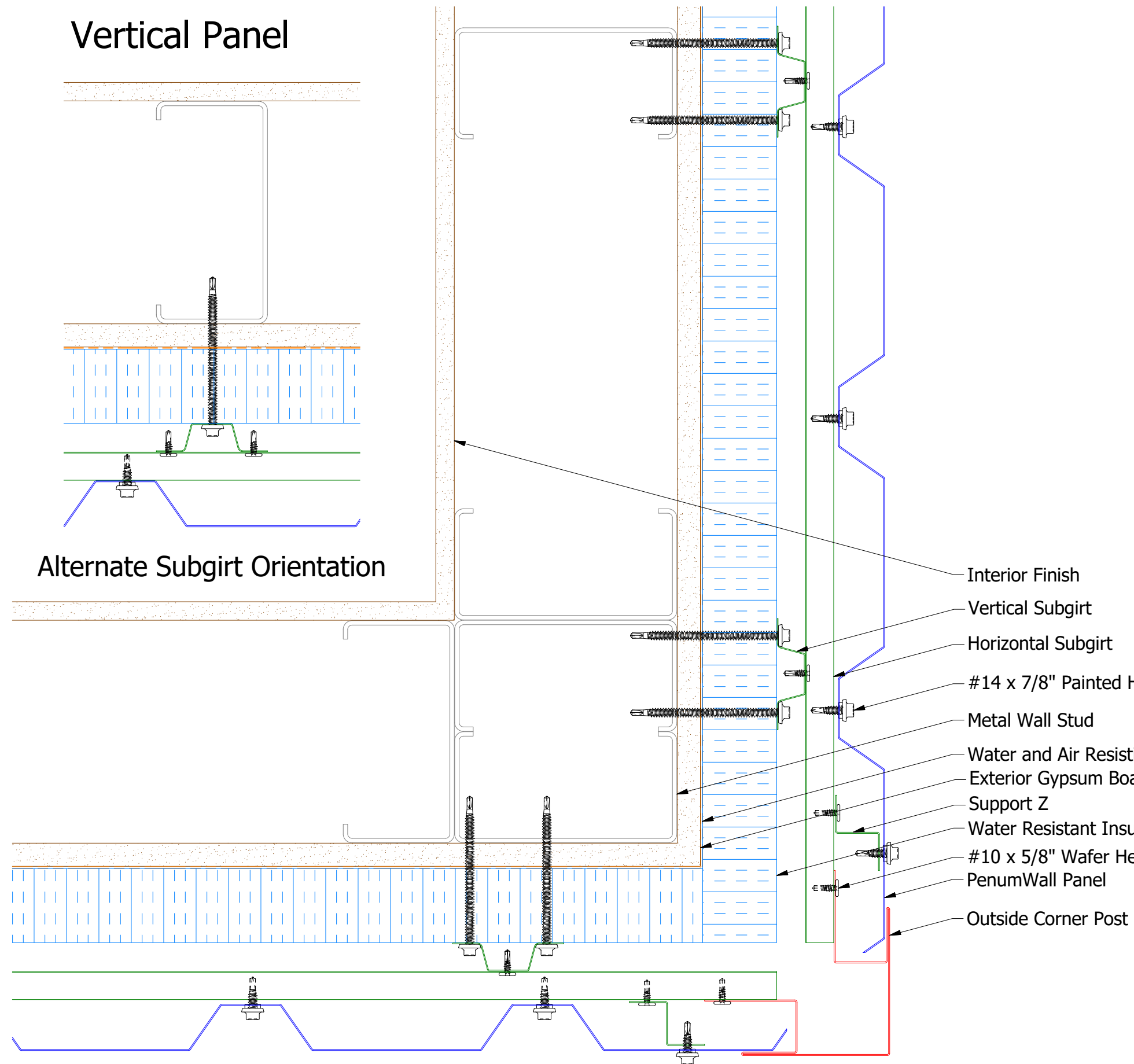
TITLE  
**PenumWall Open Inside Corner Detail**

					DWG. NO.	DR	DATE
1	4/16/2021	Added Support Z Trim and color side note.	DMR		APP	DMR	4/20/2017
REV. NO.	DATE	DESCRIPTION OF REVISION	BY	APP	MATERIAL	SH. SIZE	SCALE
						B	X:X

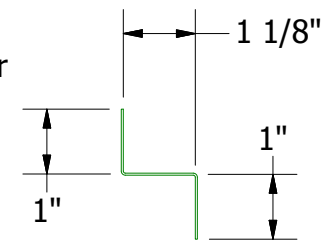
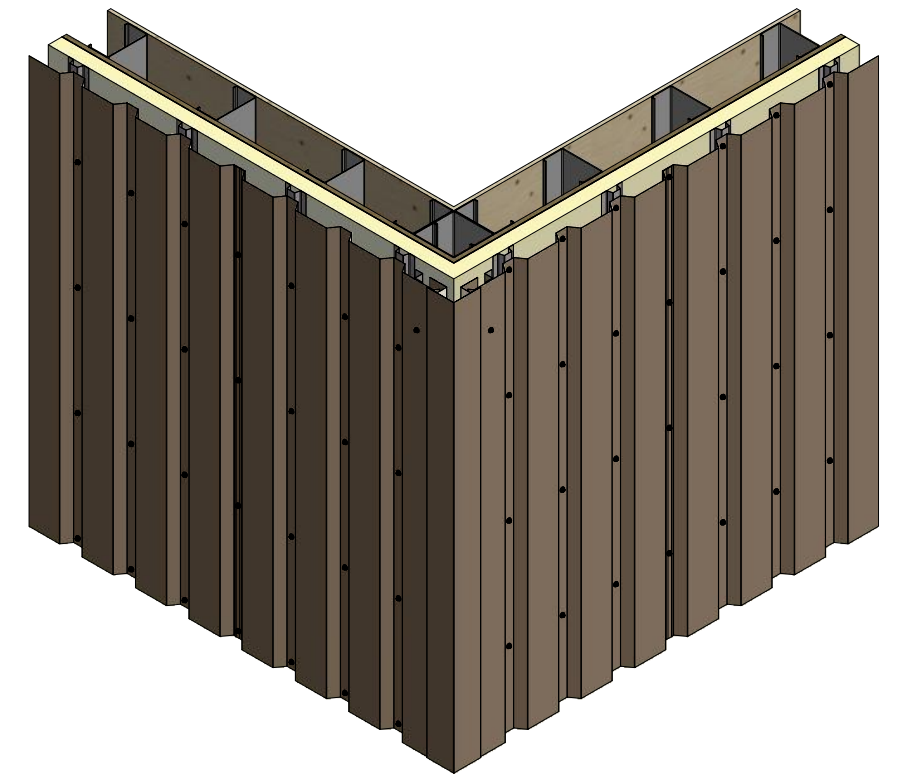
# Vertical Panel



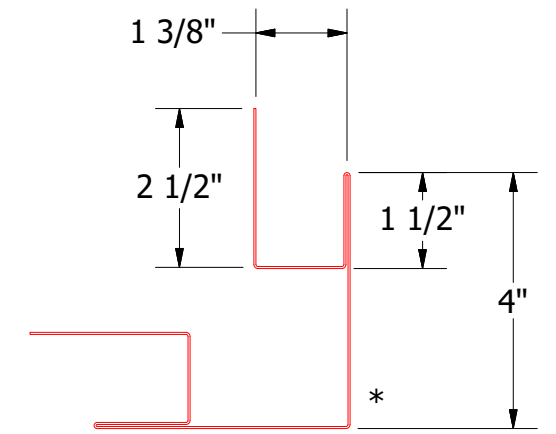
## Alternate Subgirt Orientation



- Interior Finish
- Vertical Subgirt
- Horizontal Subgirt
- #14 x 7/8" Painted Hex Washer Head Fastener
- Metal Wall Stud
- Water and Air Resistive Barrier
- Exterior Gypsum Board
- Support Z
- Water Resistant Insulation
- #10 x 5/8" Wafer Head Fastener
- PenumWall Panel
- Outside Corner Post



**BPA681 - Support Z**  
(if conditions apply)



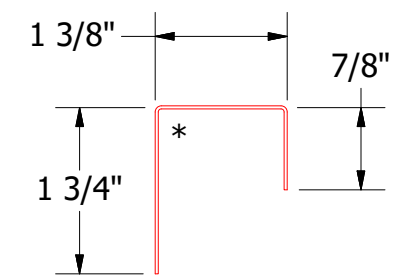
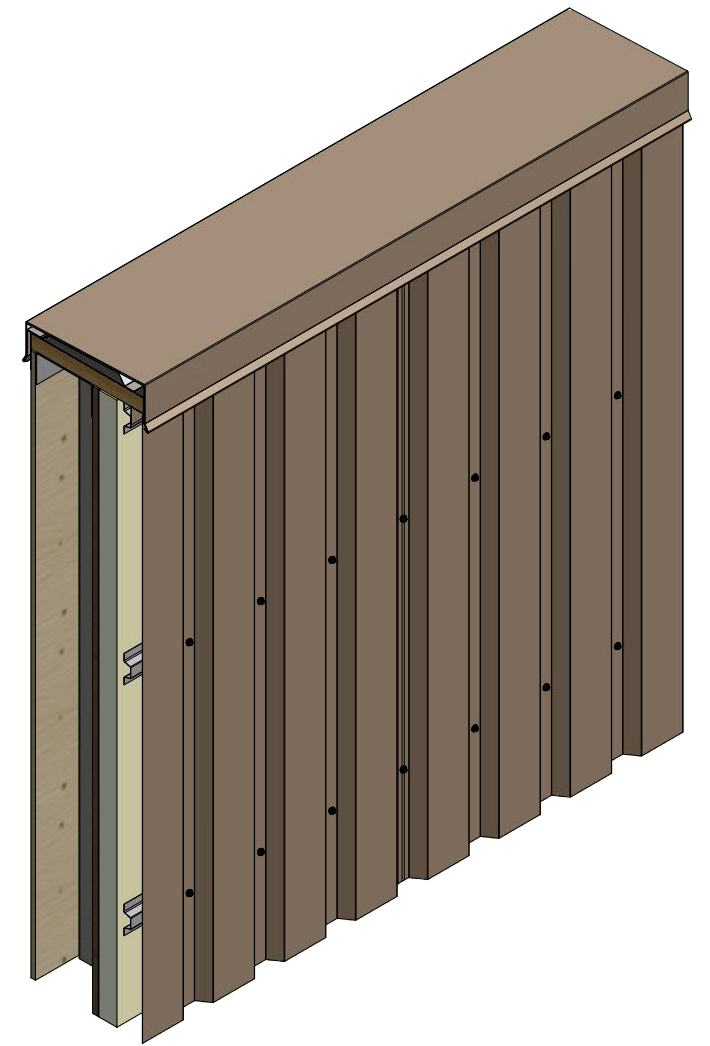
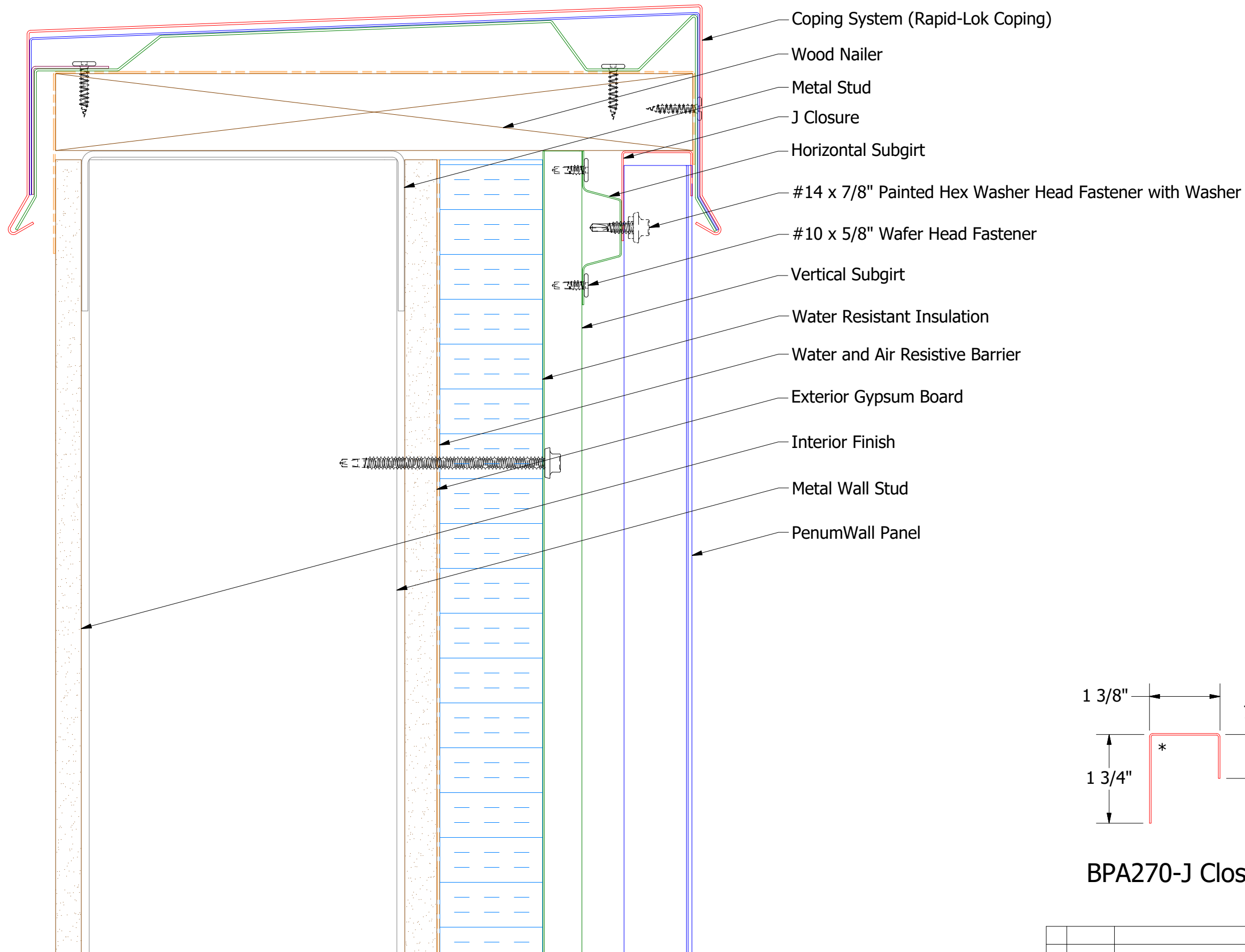
**BPA602-Outside Corner Post**

**Note:** \* denotes color side.

1		4/20/2021	Added Support Z Trim and color side note.	DMR	TITLE PenumWall Open Outside Corner Detail	
REV. NO.	DATE	DESCRIPTION OF REVISION	BY	APP	DR	DATE
					DMR	4/21/2017
					APP	DATE
					SH. SIZE	B
					SCALE	X:X

**ATAS** ATAS INTERNATIONAL, INC  
 Allentown PA  
 610-395-8445  
 Mesa AZ  
 480-558-7210

# Vertical Panel



**BPA270-J Closure**

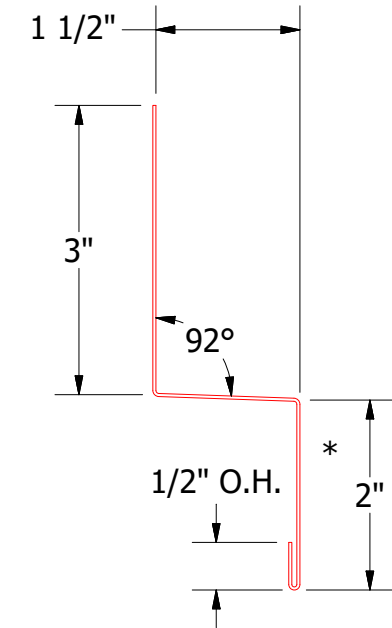
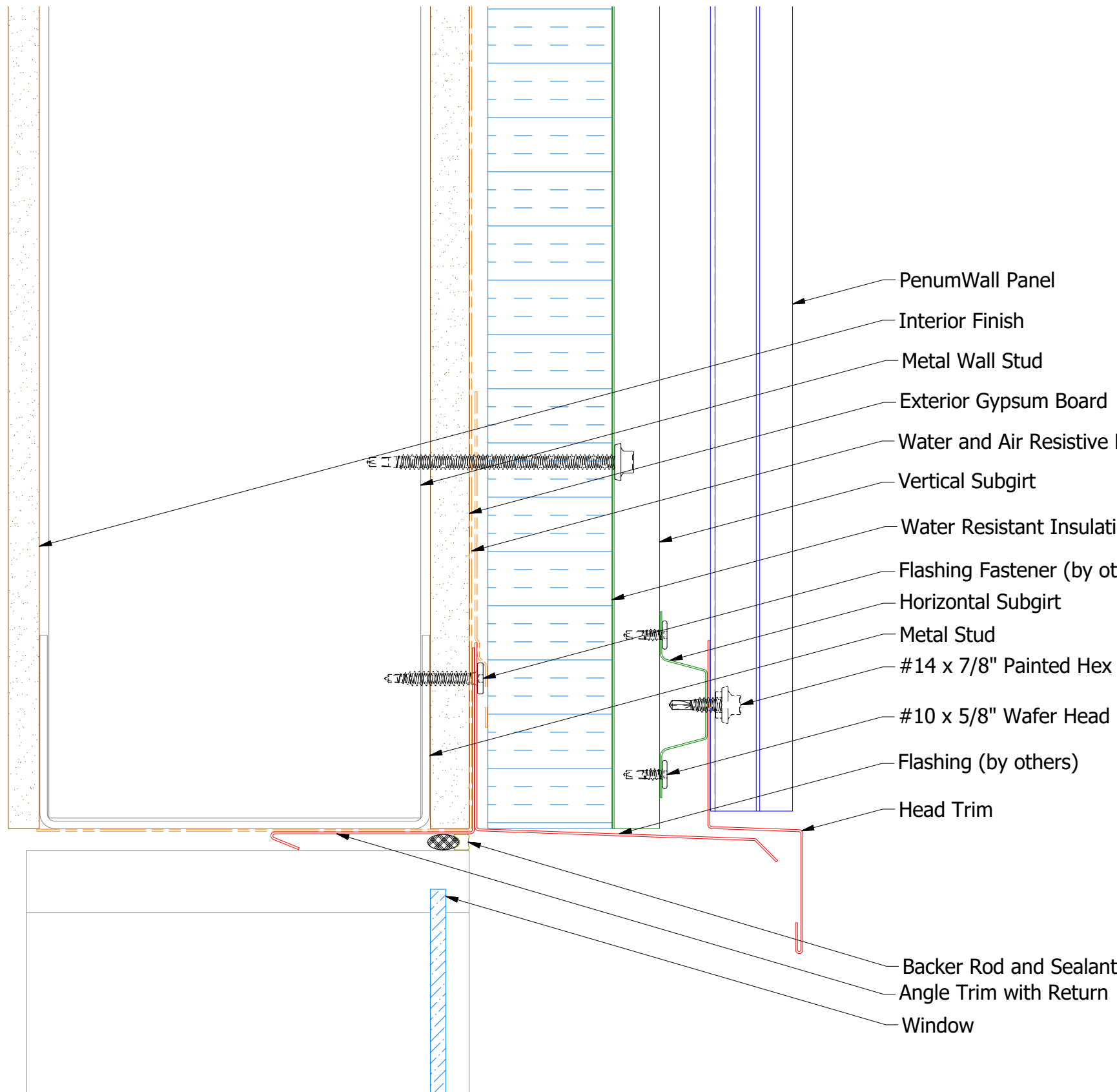
**Note:** \* denotes color side.


**ATAS INTERNATIONAL, INC**  
 Allentown PA  
 610-395-8445  
 Mesa AZ  
 480-558-7210

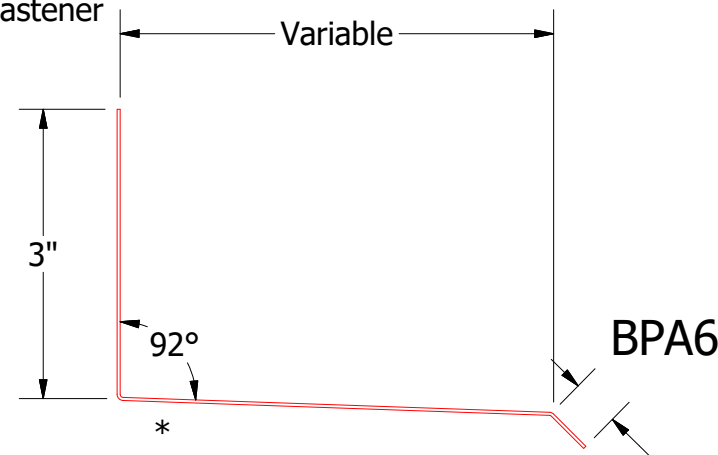
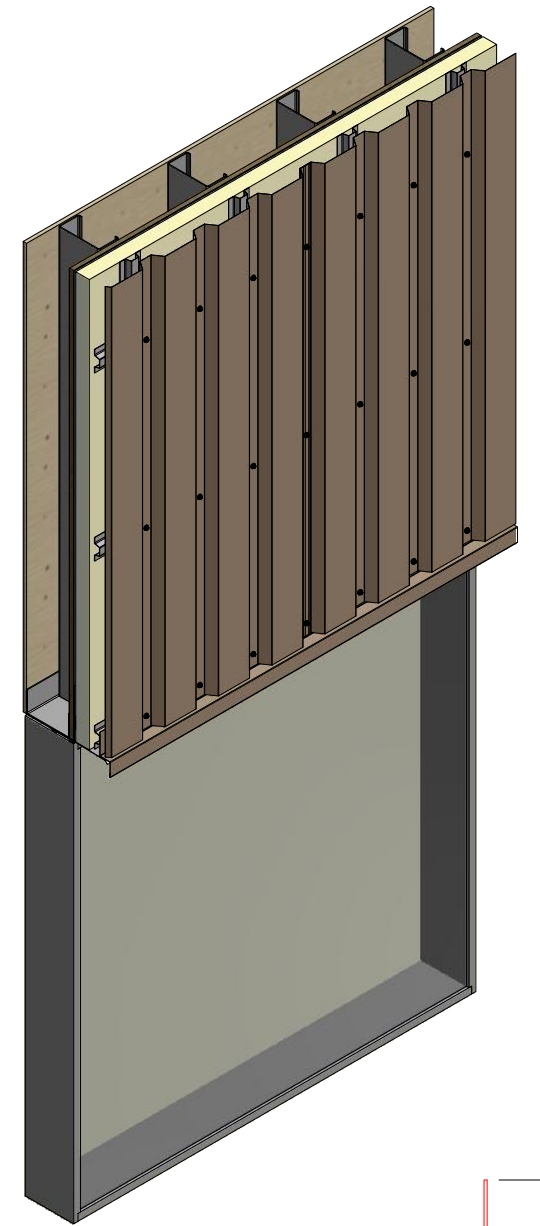
**TITLE**  
PenumWall Open Top of Wall Detail

					DWG. NO.	DR	DATE
1	4/20/2021	Added color side note.	DMR		APP	DMR	4/24/2017
REV. NO.	DATE	DESCRIPTION OF REVISION	BY	APP	MATERIAL	SH. SIZE	SCALE
						B	X:X

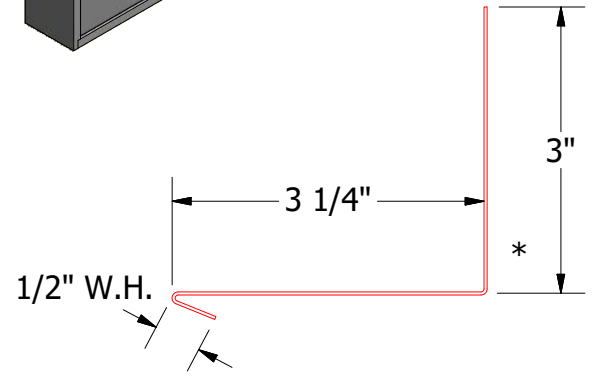
# Vertical Panel



**BPA550-Head Trim**



**Flashing**  
(Field Fabricated From Color Matched Flat Stock)



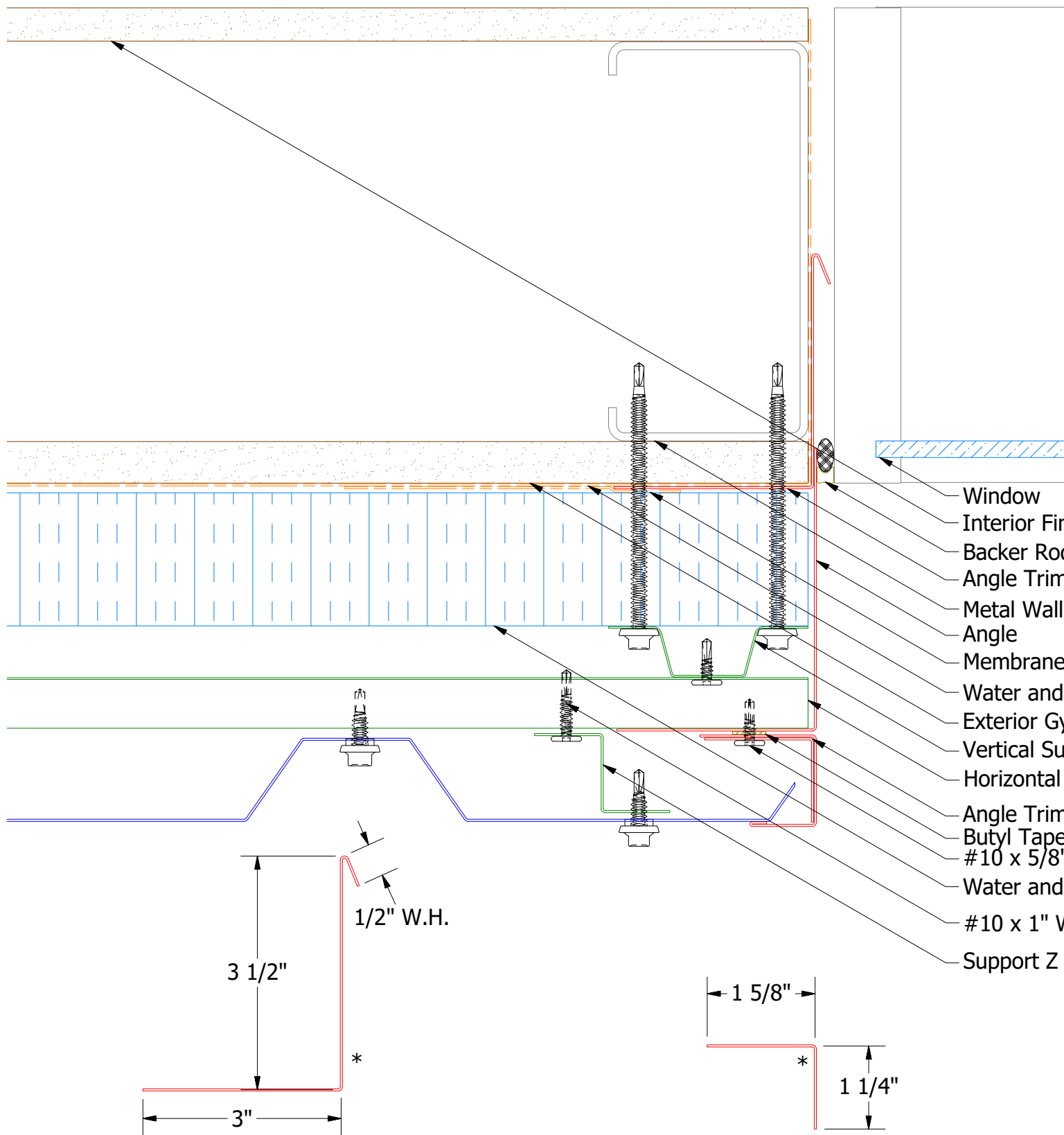
**BPA683-Angle Trim with Fastener**

**Note:** \* denotes color side.

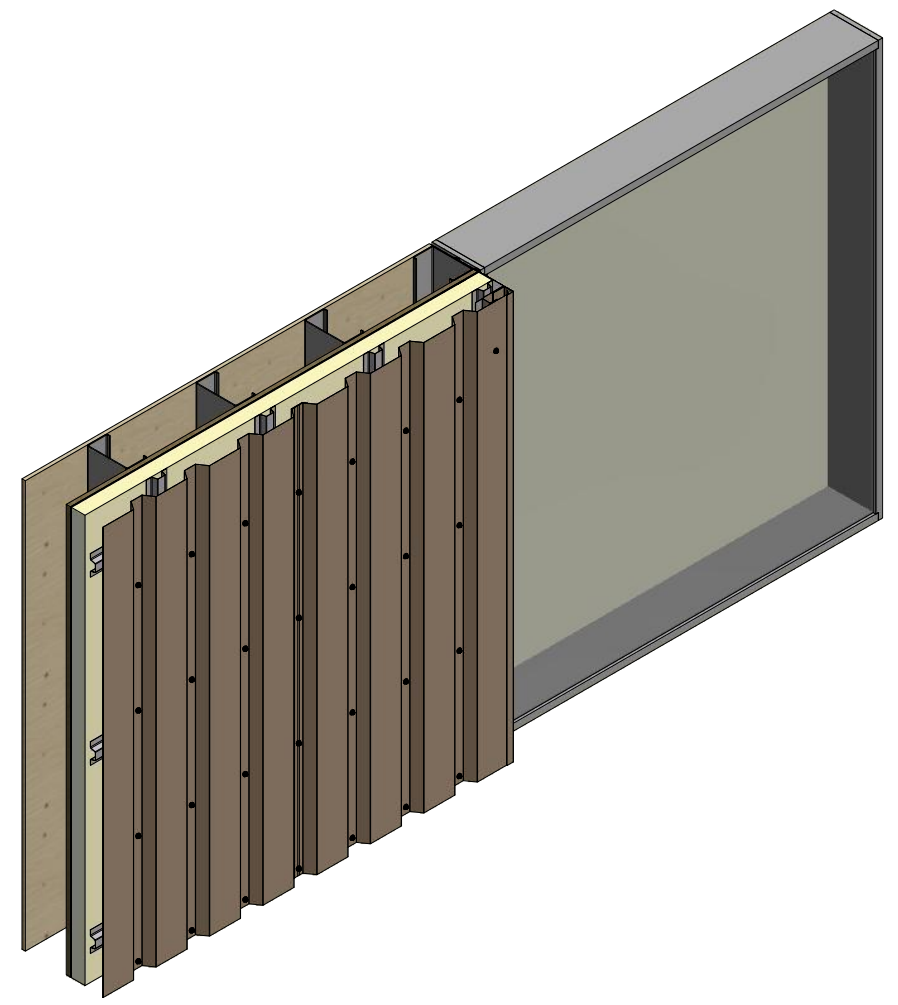
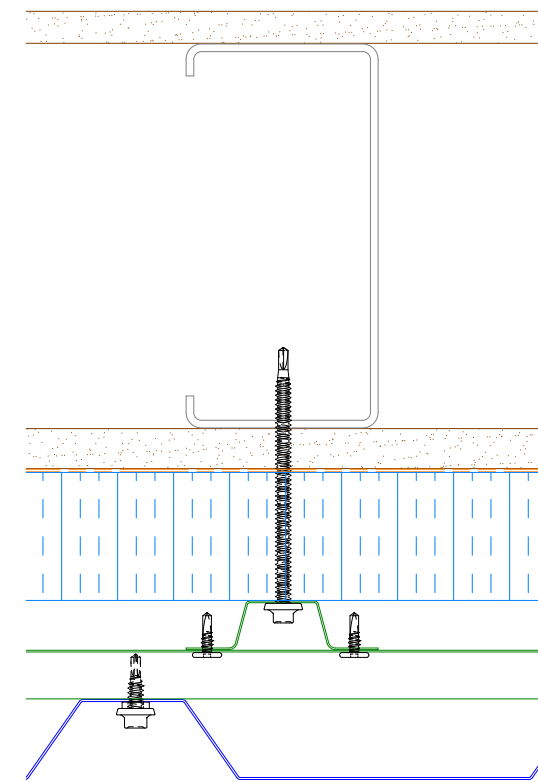
**ATAS** ATAS INTERNATIONAL, INC  
 Allentown PA  
 610-395-8445  
 Mesa AZ  
 480-558-7210

TITLE				PenumWall Open Head Detail			
DWG. NO.		DR	DMR	DATE	4/20/2017	APP	DATE
REV. NO.	DATE	DESCRIPTION OF REVISION	BY	APP	SH. SIZE	B	SCALE
1	4/16/2021	Added color side note.	DMR				X:X

# Vertical Panel

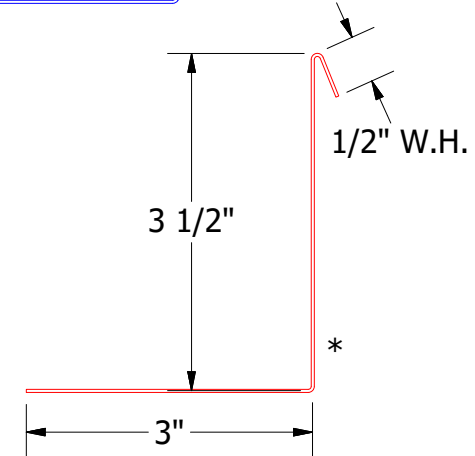


## Alternate Subgirt Orientation (NTS)

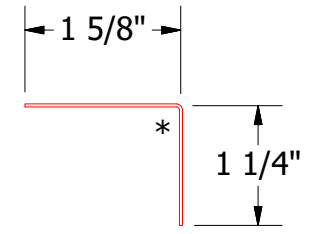


- Window
- Interior Finish
- Backer Rod and Sealant
- Angle Trim with Return
- Metal Wall Stud
- Angle
- Membrane Strip over Angle Trim with Return
- Water and Air Resistive Barrier
- Exterior Gypsum Board
- Vertical Subgirt
- Horizontal Subgirt
- Angle Trim
- Butyl Tape
- #10 x 5/8" Wafer Head Fastener
- Water and Air Resistive Barrier
- #10 x 1" Wafer Head Fastener
- Support Z

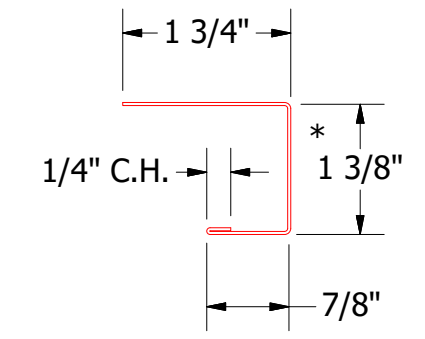
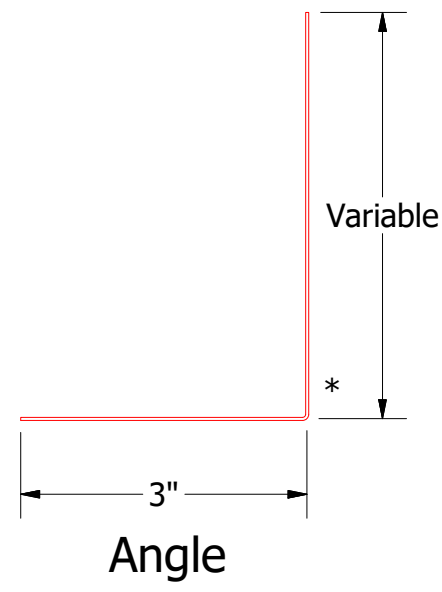
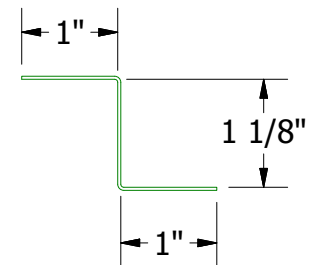
**BPA683-Angle Trim with Return**



**BPA280-Angle Trim**



**BPA681 - Support Z (if conditions apply)**



**BPA138-J Channel**

**Note:** \* denotes color side.

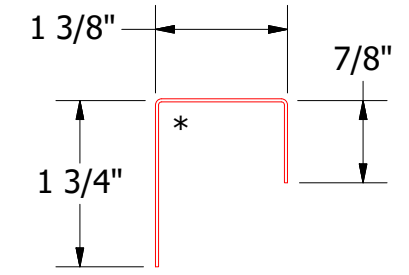
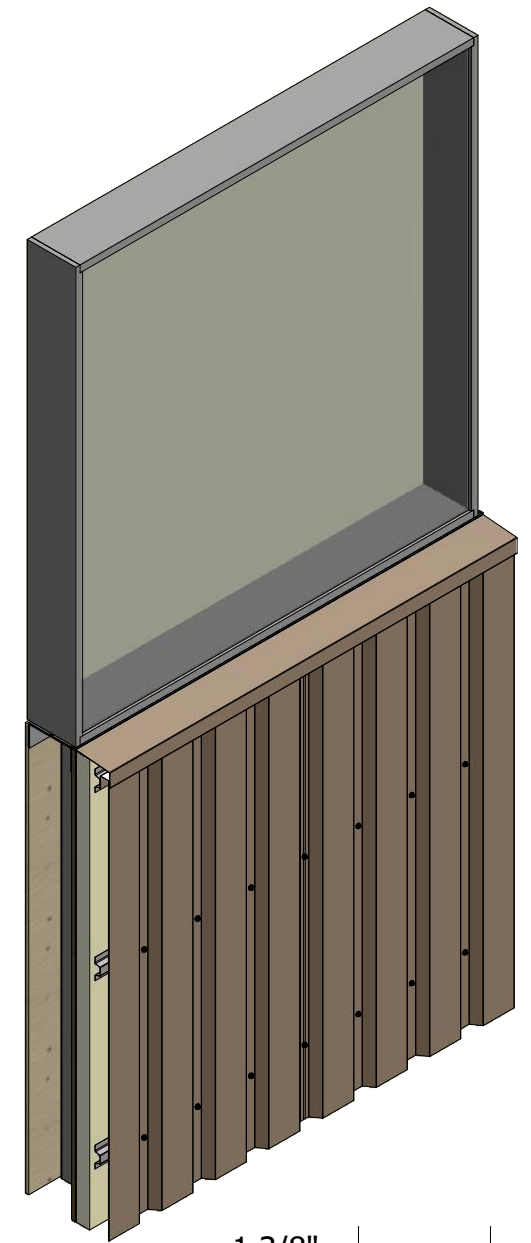
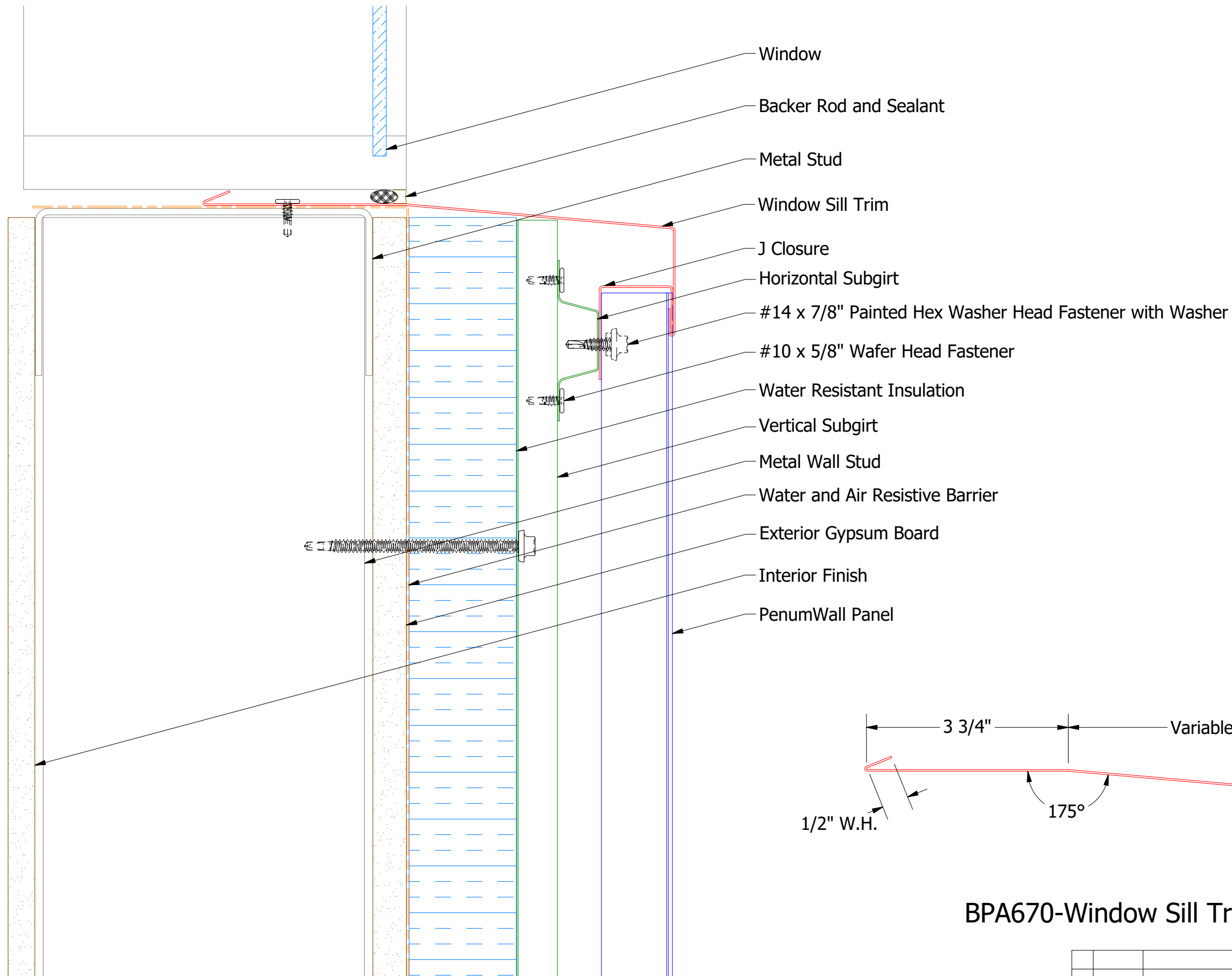
1		4/16/2021	Added Support Z Trim and color side note.	DMR	DR	DMR	DATE	4/20/2017	
REV. NO.	DATE	DESCRIPTION OF REVISION	BY	APP	MATERIAL	SH. SIZE	B	SCALE	X:X

**ATAS** ATAS INTERNATIONAL, INC  
 Allentown PA  
 610-395-8445  
 Mesa AZ  
 480-558-7210

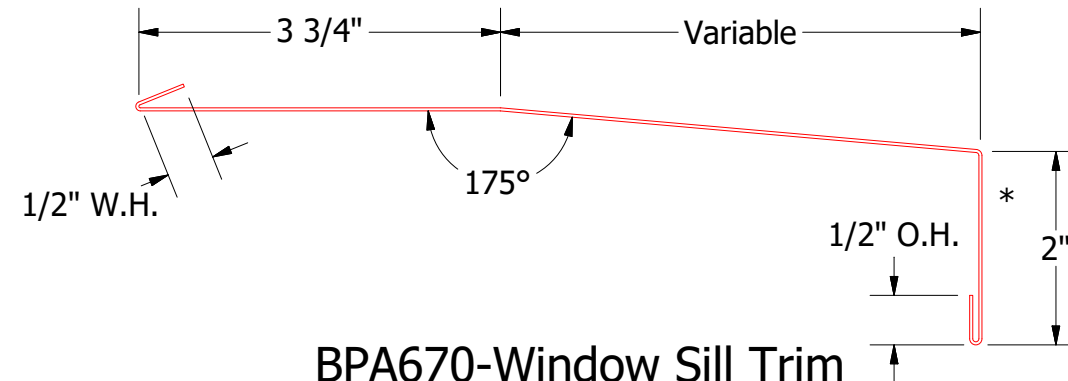
TITLE **PenumWall Open Jamb Detail**



# Vertical Panel



**BPA270-J Closure**



**BPA670-Window Sill Trim**

**Note:** \* denotes color side.

**ATAS** ATAS INTERNATIONAL, INC  
 Allentown PA  
 610-395-8445  
 Mesa AZ  
 480-558-7210

TITLE				DR		DATE	
PenumWall Open Window Sill Detail				DWG. NO.	DR	DATE	4/24/2017
				APP	DMR	DATE	
				MATERIAL	SH. SIZE	SCALE	X:X
1	4/20/2021	Added color side note.	DMR		B		
REV. NO.	DATE	DESCRIPTION OF REVISION	BY	APP	SH. SIZE	SCALE	X:X