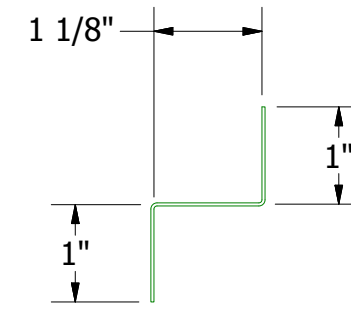
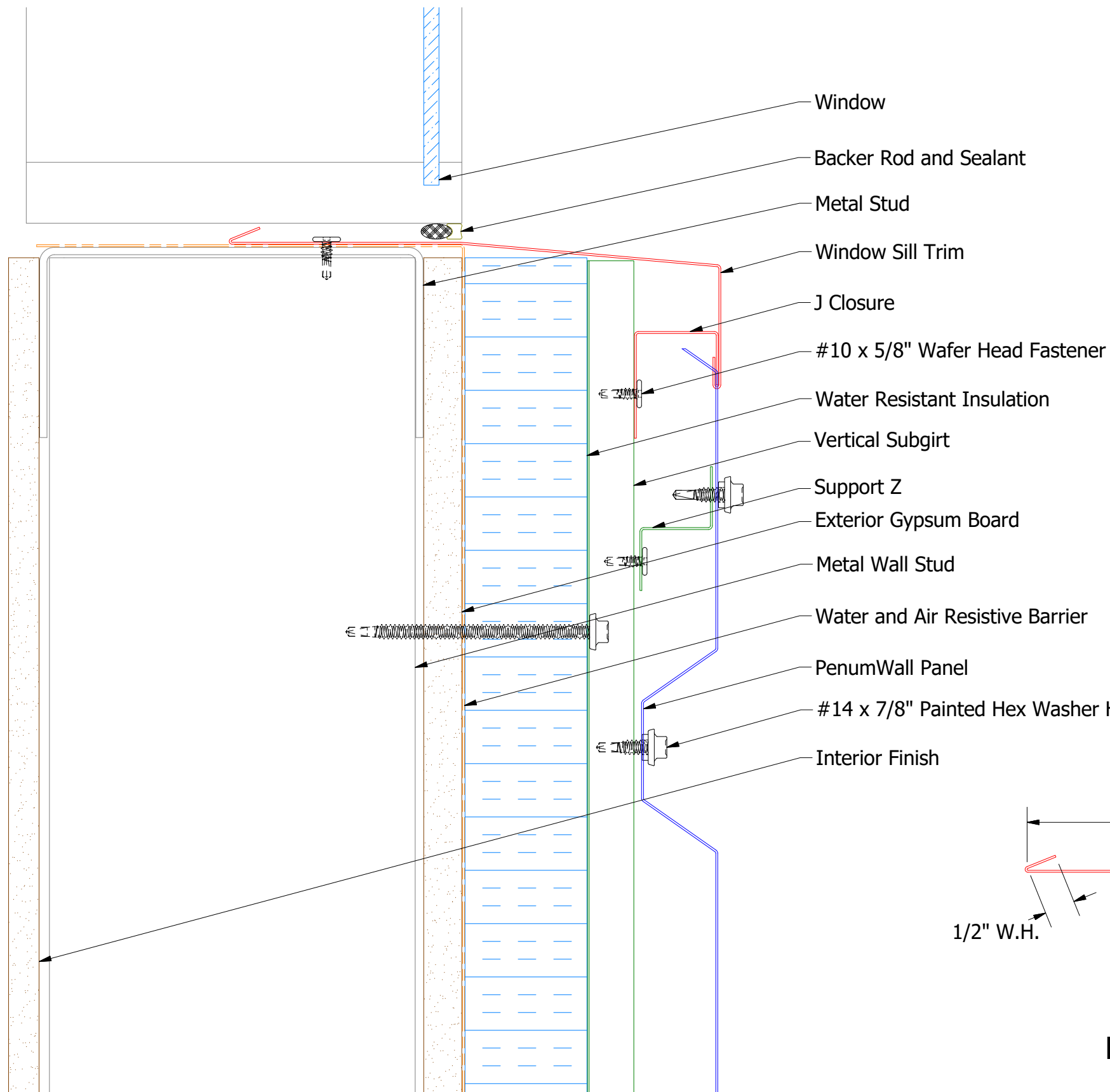
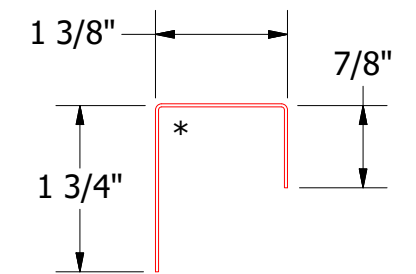
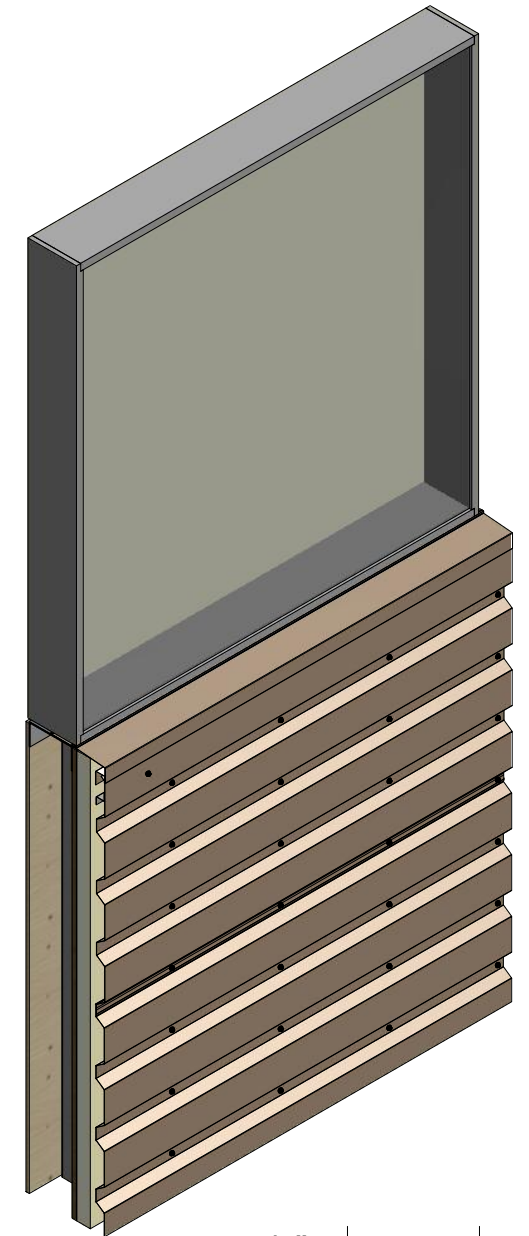


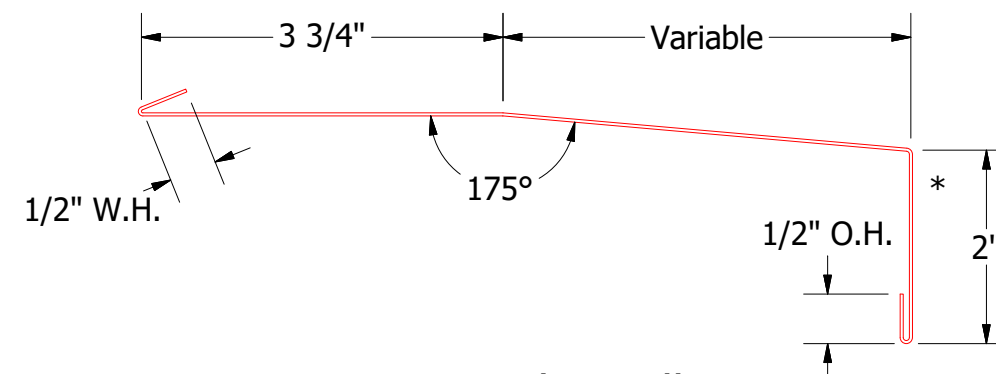
# Horizontal Panel



**BPA681 - Support Z**  
(if conditions apply)



**BPA270-J Closure**



**BPA670-Window Sill Trim**

**Note:** \* denotes color side.

 <b>ATAS INTERNATIONAL, INC</b> Allentown PA 610-395-8445 Mesa AZ 480-558-7210		TITLE <b>PenumWall Open Window Sill Detail</b>	
		DWG. NO. DR DMR DATE 4/24/2017 APP DATE	MATERIAL SH. SIZE B SCALE X:X
REV. NO. 1	DATE 4/20/2021	DESCRIPTION OF REVISION Added Support Z Trim and color side note.	BY APP DMR